

1.1 ADDENDUM

- .1 This addendum shall be known as:

Addendum #01
NWAFC L16 Roof Replacement

1.2 PRECEDENCE

- .1 This amendment to the bid documents is effective immediately.
- .2 This Addendum shall form an integral part of the original bid documents and is to be read in conjunction therewith.
- .3 This Addendum shall take precedence over previously issued bid documents with which it may prove to be at variance.

1.3 GENERAL

- .1 The Amended and Restated Agreement: NAFC L16 Roof Replacement and General Conditions shall govern all phases of the work covered by this Addendum.
- .2 Acknowledge receipt of this addendum in the Tender Form.

1.4 PURPOSE

- .1 The purpose of this Addendum is to inform bidders of the changes and additions to be added to the bid documents.

1.5 Contractor Questions:

- .1 I don't see a schedule in the documents. Is there a date the project needs to be completed by? Can the job be done in the fall? If so, this will make shutting down the rooftop units easier.

Answer: Time schedule for the project is 18 weeks and is expected to finish around the end of October

- .2 Is there a spec or a product name for the expansion joint material in detail 4 on 701?

Answer: Monolithic expansion joint: Made of EPDM-based rubber consisting of two flanges coated on the surface and underface, with an expandable core. Can be heat welded to roof membranes. Must be compatible with specific roofing system proposed.

- .3 The roof assembly on 201 calls for a 6mm protection board over the insulation. The spec calls for a mineral wool sheet factory-laminated to the base sheet. Which is the intent? We would recommend the 6mm board.

Answer: Protection board and base sheet can be separate components or a combined integral product. Either is acceptable as long as it meets the overall tested assembly requirements.

- .5 Can we substitute the specifications in 07 52 00 Part 2 Products 2.4.1 with the attached 2.2.3, Cover board components. – Reasoning - The mineral wool board cannot meet the required wind uplift when adhered.

Can we substitute the specifications in 07 52 00 Part 2 Products 2.5.1.1 and 2.5.1.2 with the attached 2.3.1, Base Sheet. - Reasoning - The Mineral wool board cannot meet the required wind uplift when adhered.

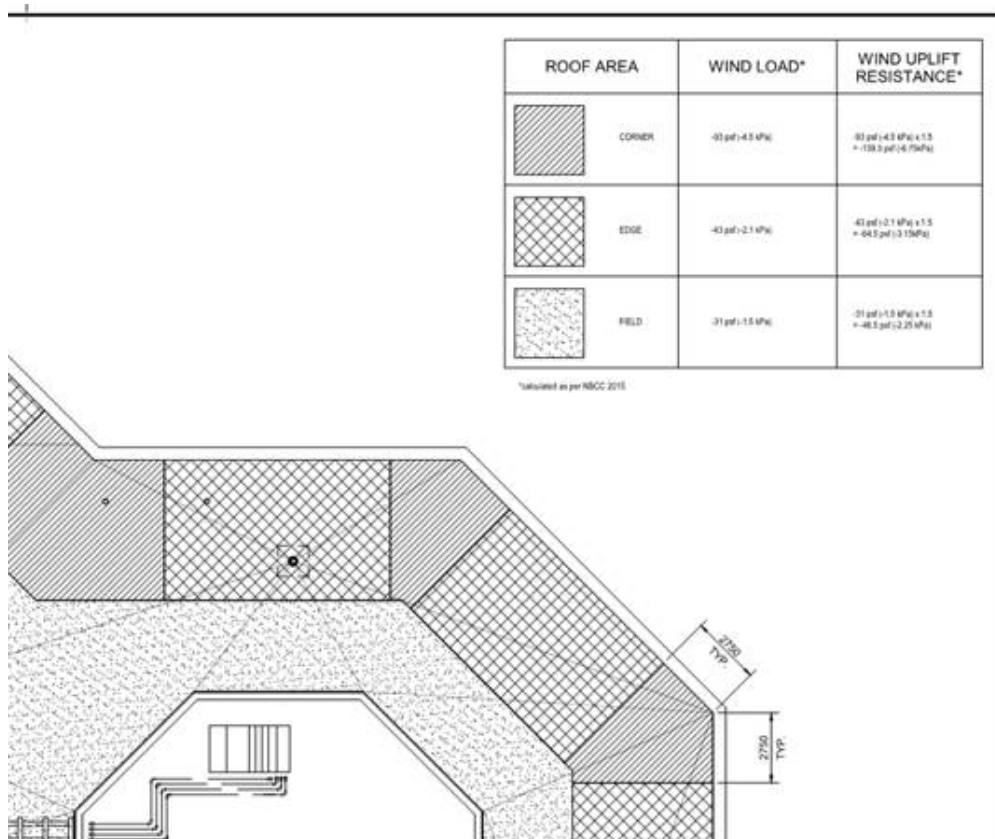
Answer: Protection board and base sheet can be separate components or a combined integral product. Either is acceptable as long as it meets the overall tested assembly requirements.

- .4 Will retrofit roof drains be acceptable? If not, we will need access to the inside of the building before the tender closes to determine the accessibility of the existing RWLs for making the connection to the new drains. The specified drains will also require the contractor access to the interior during the project to make those connections.

Answer: Yes, retrofit roof drains are acceptable.

- .5 The hatch patterns on 202 indicating uplift pressures are not clear. Is it possible to get it re-plotted?

Answer: This could be an issue with software or downloading of the files as the hatching on the PDF's are clear with distinct patterns and wording stating where each pattern is located (Edge, Corner & Field). Sample picture below.



- .6 The uplift resistance required in the corners is greater than the pressure the specified assembly was tested to withstand. Would a combination of adhesive and mechanical fasteners be acceptable?

Answer: Adhesive is the preferred method of attachment, if the roofing manufacturer requires additional mechanical fasteners in order to achieve the specified wind uplift requirements then this will have to be coordinated with the site specific conditions.

- .7 There is a note on drawing 202 that says to clean the existing concrete deck once the roof assembly is removed. This may not be practically possible. Technically it may be possible but the cost could be astronomical depending on how well the existing vapour barrier is adhered. Can the existing vapour barrier be left in place?

Answer: We are unable to determine the condition of the existing vapour barrier. The bond of the new vapour barrier to the existing deck is integral to the performance of the entire system. Bidders should include the new vapour barrier as per the contract documents.

END OF ADDENDUM #01