
Date: June 22, 2020

Addendum No: 005

Project Number: R.105793.008

The following changes in the tender documents are effective immediately. This addendum will form part of the contract documents.

Drawings

1. ID Interior Design
 1. ID-02: Add drawing ID-02-SK2.
 2. Delete note "PHONE BOOTHS BY GENERAL CONTRACTOR" on drawing ID-06, add note "SINGLE OCCUPANT PHONE BOOTHS BY GENERAL CONTRACTOR" on drawing ID-06.
 3. ID-08: Add drawing ID-08-SK1.

Specifications

1. Appendices:
 1. GC Workplace Fit-Up - NCR Quebec Signage Package
 1. Page S-05: Add note "Grade 1 Braille to be provided to read Washroom / Toiletttes" to Washroom Signage Type 14.
 2. Page S-06: Delete note "1719-01 – 1719-29" from Workstation Signage Type 17, add note "1719-01 – **1719-32**" to Workstation Signage Type 17.

End of Instructions

CONSTRUCTION LEGEND

SYMBOL	DESCRIPTION
	EXISTING PARTITION TO REMAIN
	PARTITION TO BE SLAB TO U/S OF CEILING (124mm) 1 LAYER OF 16mm GYPSUM BOARD, ACOUSTIC CAULKING TOP & BOTTOM, 92mm METAL STUDS @ 406mm O.C. WITH ATTENUATION BATTS IN CAVITY, 1 LAYER OF 16mm GYPSUM BOARD, ACOUSTIC CAULKING TOP & BOTTOM. DESIGNED-TO STC RATING: 48 (TO TOP OF PARTITION ONLY)
	PARTITION TO BE SLAB TO U/S OF CEILING C/W DRYWALL Baffle TO MATCH (124mm) 1 LAYER OF 16mm GYPSUM BOARD, ACOUSTIC CAULKING TOP & BOTTOM, 92mm METAL STUDS @ 406mm O.C. WITH ATTENUATION BATTS IN CAVITY, 1 LAYER OF 16mm GYPSUM BOARD, ACOUSTIC CAULKING TOP & BOTTOM. DESIGNED-TO STC RATING: 48
	DEMISING PARTITION, PARTITION TO BE SLAB TO SLAB (103mm) 1 LAYER OF 13mm GYPSUM BOARD ONE SIDE, ACOUSTIC CAULKING TOP & BOTTOM, 92mm METAL STUDS @ 406mm O.C., WITH ATTENUATION BATTS IN CAVITY, 2 LAYERS OF 13mm GYPSUM BOARD, ACOUSTIC CAULKING TOP & BOTTOM. DESIGNED-TO STC RATING: 48
	PARTITION TO BE SLAB TO SLAB C/W WIRE MESH (140mm) 2 LAYERS OF 16mm GYPSUM BOARD ONE SIDE, ACOUSTIC CAULKING TOP & BOTTOM, 19mm #10 (18ga) ROLLED AND FLATTENED METAL MESH FASTENED TO STUDS WITH STEEL POP RIVETS AND FENDER WASHER AT 200mm O.C., 92mm METAL STUDS @ 300mm O.C., WITH ATTENUATION BATTS IN CAVITY, 1 LAYER OF 16mm GYPSUM BOARD, ACOUSTIC CAULKING TOP & BOTTOM. DESIGNED-TO STC RATING: 54
	DEMOUNTABLE PARTITION. STICK BUILT SYSTEM TO ALLOW CONFIGURATION OF PANELS IN CUSTOMIZABLE WIDTHS TO SUIT PARTITION PLAN. FRAMES TO BE EXTRUDED ALUMINUM WITH A THIN RECTILINEAR PROFILE AND TO ACCOMMODATE VARIOUS WIDTHS OF GLASS PANELS. LONG PULLS FOR SLIDING DOORS. WHERE THIS PARTITION TYPE FORMS A CORNER WITH THE SAME PARTITION TYPE, CORNER TO BE FRAMELESS GLASS. THE DEMOUNTABLE PARTITION VENDOR IS RESPONSIBLE FOR ALL SEISMIC BRACING OF THEIR SYSTEM. DRYWALL Baffle ABOVE TO PROVIDE BRACING AND ACOUSTIC PERFORMANCE. Baffle CONSTRUCTION TO MATCH P2.
	OPERABLE COILING PARTITION, MOTORIZED, CEILING HOUSED WITH RECESSED WALL TRACKS. BRACING TO STRUCTURE TO BE DESIGNED BY CONTRACTOR'S OWN ENGINEER. FINISH: ACOUSTIC VINYL WITH FELT COVER BOTH SIDES DESIGNED-TO STC RATING: 46
	P2 PARTITION WITH DEMOUNTABLE PARTITION FASCIA MOUNTED ATOP. FINISHED FASCIA TO INTEGRATE POWER, SUPPORT FOR TV SCREEN, AND TABLE SURFACE.
	PARTITION TO BE SLAB TO U/S OF CEILING (172mm) 1 LAYER OF 16mm GYPSUM BOARD, ACOUSTIC CAULKING TOP & BOTTOM, 140mm METAL STUDS @ 406mm O.C., 102mm METAL STUDS @ 406mm O.C. WITH ATTENUATION BATTS IN CAVITY, 1 LAYER OF 16mm GYPSUM BOARD, ACOUSTIC CAULKING TOP & BOTTOM DESIGNED-TO STC RATING: 57

INDICATES DOOR #, SEE DOOR SCHEDULE

ROOM

INDICATES ROOM #



INDICATES DETAILS OR ELEVATIONS SEE DETAILS SHEETS

project

NCR - QUEBEC
GC WORKPLACE FIT-UP

project

Designed By

AD

Conçu par

Date

20200622

(yyyy/mm/dd)

Drawn By

AD

Dessiné par

Date

20200622

(yyyy/mm/dd)

Reviewed By

Examiné par

Date

(yyyy/mm/dd)

Approved By

Approuvé par

Date

(yyyy/mm/dd)

Tender

Soumission

Project Manager

Administrateur de projets

Public Works and
Government Services
CanadaTravaux publics et
services gouvernementaux
Canada

drawing

ID-02
CONSTRUCTION PLAN

dessin

Project no.

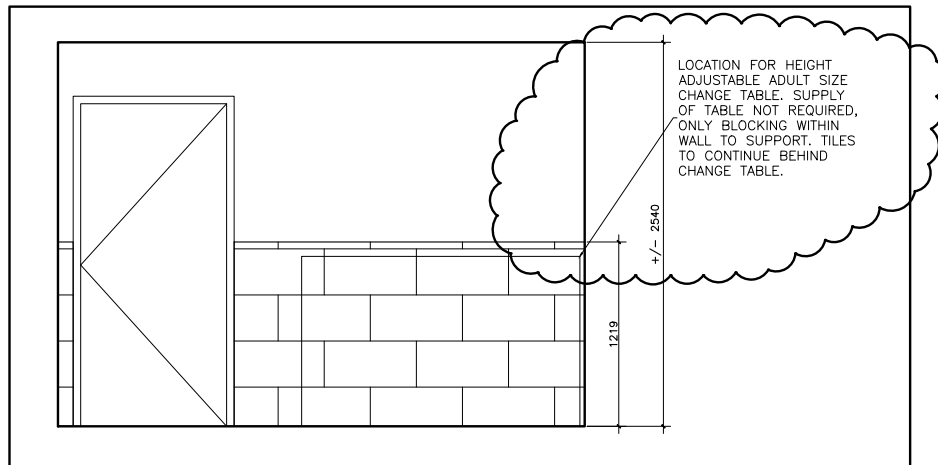
No. du projet

R.105793.008

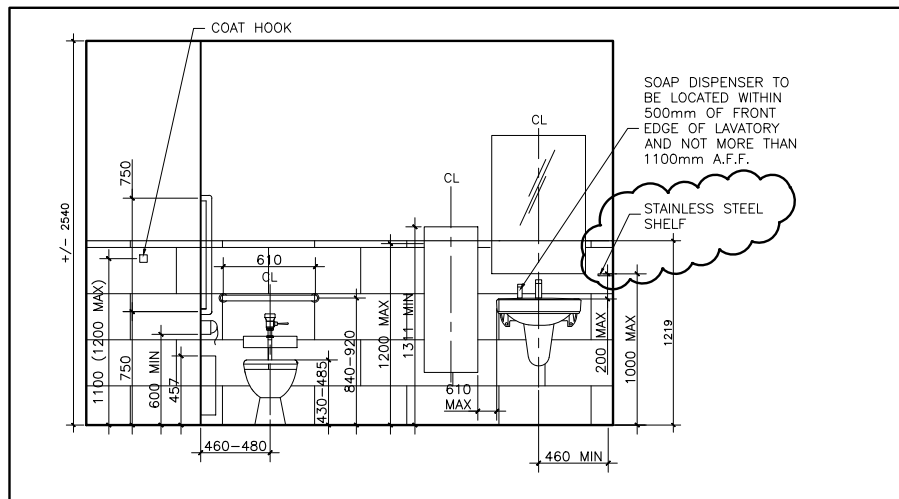
Drawing no.

No. du dessin


ID-02-SK2



02 WASHROOM WEST ELEV
08 SCALE: 1:50



04 WASHROOM EAST ELEV
08 SCALE: 1:50

project NCR - QUEBEC GC WORKPLACE FIT-UP	project Designed By AD Date 20200622 Drawn By AD Date 20200622 Reviewed By Date Approved By Date Tender Project Manager	Conçu par (yyyy/mm/dd) Dessiné par (yyyy/mm/dd) Examiné par (yyyy/mm/dd) Approuvé par (yyyy/mm/dd) Soumission Administrateur de projets	 Public Works and Government Services Canada Travaux publics et services gouvernementaux Canada
drawing ID-08 DETAILS AND ELEVATIONS (CONT.)	dessin ID-08 DETAILS AND ELEVATIONS (CONT.)	Project no. R.105793.008 Drawing no. ID-08-SK1	No. du projet R.105793.008 No. du dessin