
Date: June 17, 2020

Addendum No: 004

Project Number: R.105793.008

The following changes in the tender documents are effective immediately. This addendum will form part of the contract documents.

Drawings

1. ID Interior Design

1. Delete sheet ID-02, add sheet ID-02.

2. ID-09: DOOR SCHEDULE AND DETAILS

1. Delete note "18 GAUGE HOLLOW CORE METAL" from D1703G door material. Add note "METAL" to D1703G door material.

2. Add additional row to LEGEND to read:

MIN	MINIMUM
-----	---------

Specifications

1. Section 01 35 29.06 – HEALTH AND SAFETY REQUIREMENTS

1. Add new item 1.3.15 to read: The General Contractor must develop, establish, and present its own protocol to ensure the health and safety of its employees and sub-contractors on its construction site.

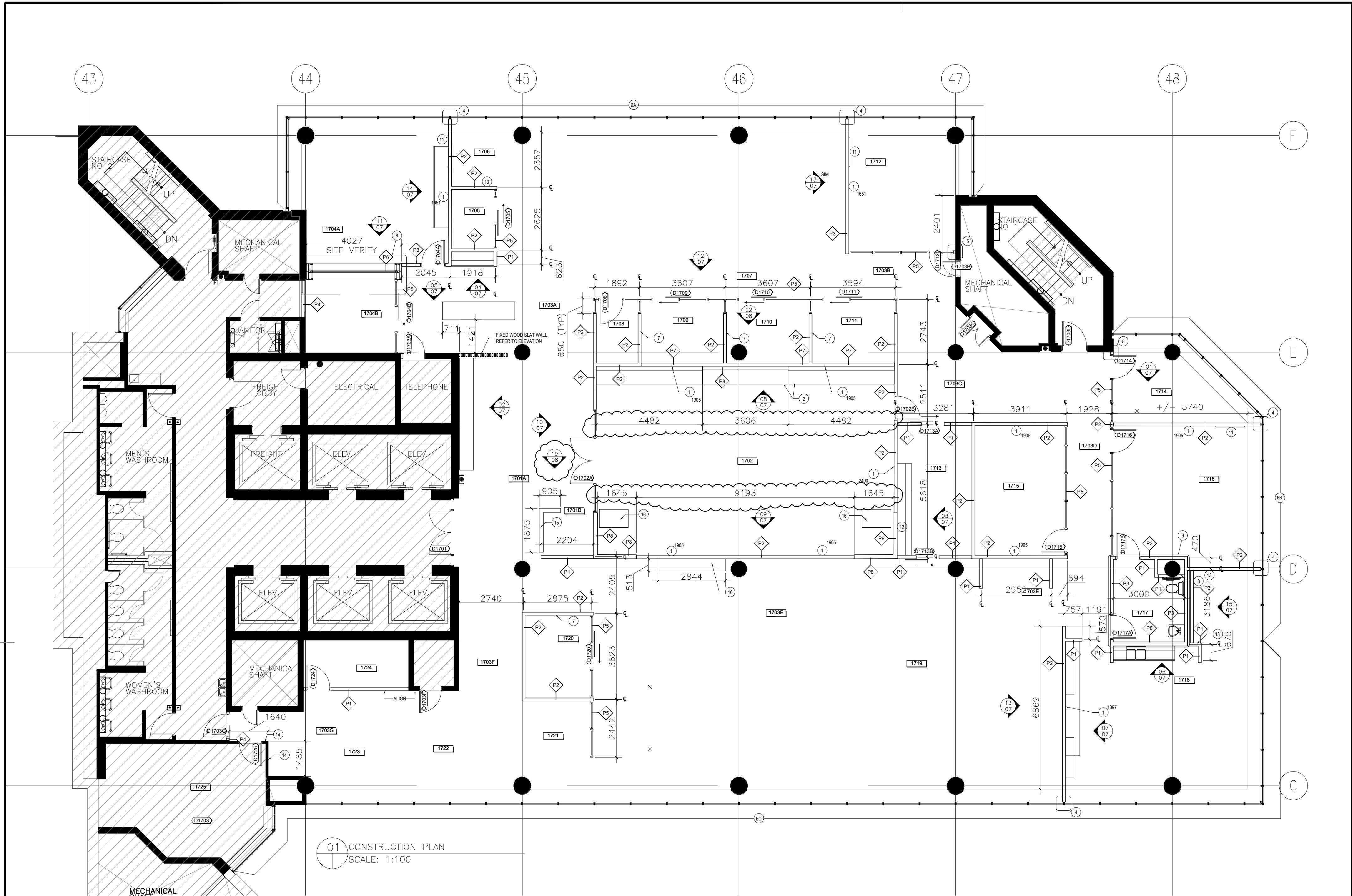
2. Add new item 1.3.16 to read: COVID-19: The access to building is in accordance with COVID-19 health and safety and is overseen by the Federal Government Health and Safety department.

2. Section 08 11 00 – METAL DOORS AND FRAMES

1. Delete note 2.9.2, add note 2.9.2 to read: "Form face sheets for interior doors from 16-gauge sheet steel."

2. Delete note 2.9.3, add note 2.9.3 to read: "Reinforce doors with 16-gauge vertical stiffeners, laminated to face sheets at 150 mm on centre maximum."

End of Instructions



CONSTRUCTION NOTES

- ALL PARTITIONS TO BE P1 UNLESS NOTED OTHERWISE.
- VERIFY ALL DRAWINGS, SPECIFICATIONS, DIMENSIONS AND MEASUREMENTS AS WELL AS SITE CONDITIONS AND NOTIFY THE CONSULTANT OF ANY ERRORS, DISCREPANCIES AND OMISSIONS PRIOR TO STARTING WORK.
- REFER TO THE ENGINEERING DRAWINGS FOR ALL MECHANICAL AND ELECTRICAL REQUIREMENTS INCLUDING PLUMBING SPECIFICATIONS.
- ALL DIMENSIONS ARE METRIC UNITS.
- DO NOT SCALE DRAWINGS. WRITTEN DIMENSIONS GOVERN. ADVISE CONSULTANT OF DISCREPANCIES IN DIMENSIONS.
- UNLESS INDICATED OTHERWISE, ALL DIMENSIONS ARE TAKEN TO THE CENTER LINE OF WALLS, EXCEPT TO THE FACE OF CORE WALLS AND/OR STRUCTURAL BUILDING COLUMNS.
- ALL DOOR FRAMES TO BE INSTALLED 100MM FROM CORNERS OF ADJACENT PARTITIONS UNLESS NOTED OTHERWISE.
- LAYOUT OUT PARTITION LOCATIONS AND MARK WITH CHALK LINES. OBTAIN APPROVAL OF LAYOUT FROM CONSULTANT PRIOR TO INSTALLING WALL ASSEMBLY.
- GYPSUM BOARD PARTITIONS TO BE TAPED, SANDED AND PRIMED READY TO RECEIVE NEW FINISH UNLESS OTHERWISE NOTED. REFER TO FINISHES PLAN.
- STAGGER JOINTS IN GYPSUM BOARD PANELS ON EACH SIDE OF METAL STUDS.
- ENSURE THAT NEW PARTITIONS THAT EXTEND TO THE UNDERSIDE OF STRUCTURAL SLABS AND NEW PARTITIONS WITH THE PLENUM BAFFLE DO NOT INTERFERE WITH MECHANICAL DUCTS, ELECTRICAL CONDUITS, BOXES OR OTHER MECHANICAL OR ELECTRICAL COMPONENTS. CONSTRUCT BULKHEADS AROUND MECHANICAL AND ELECTRICAL ITEMS AS REQUIRED. REFER TO ENGINEERS DRAWINGS.
- ENSURE THAT ALL PIPING, DUCTING AND ANY FRAMED OPENINGS THAT PENETRATE NEW SOUND RATED PARTITIONS AND FLOOR SLABS ARE PROPERLY SEALED WITH ACOUSTICALLY RATED ASSEMBLY OR RATED FIRESTOPPING COMPONENTS.
- SEAL ALL PENETRATIONS IN FIRE-RATED ASSEMBLIES WITH APPROVED FIRE SEAL MATERIALS. SEAL ANY EXISTING PENETRATIONS OR NEW PENETRATIONS IN FLOOR OR WALL ASSEMBLIES WITHIN TELEPHONE OR ELECTRICAL CLOSETS.
- REMOVE ALL GLUE, TAPE, PAPER ETC., THEN CLEAN MECHANICAL CONVECTOR THOROUGHLY OF ALL GREASE AND DIRT. REPAIR ALL DAMAGE, INCLUDING DEPRESSIONS, CHIPS, AND SCREW HOLES WHERE PARTITIONS WERE REMOVED. SAND AND PREPARE SURFACES READY TO RECEIVE NEW PAINT FINISH.
- PATCH AND REPAIR ALL DAMAGE TO CORE WALLS AND COLUMNS, INCLUDING WHERE OUTLETS HAVE BEEN REMOVED. REPAIR DEPRESSIONS, FLAKING WALLS AND SCREW HOLES. REMOVE WALL PAPER ADHESIVE AND PAPER FRAGMENTS AND MAKE READY TO RECEIVE NEW WALL FINISH.
- REFER TO MILLWORK DRAWINGS. INSTALL SOLID BLOCKING AND ADDITIONAL FRAMING SUPPORT FOR WALL HUNG MILLWORK ITEMS PRIOR TO ENCLOSING WALL FRAMING.
- PATCH OPENINGS IN CONCRETE FLOOR SLAB OR CONCRETE WALLS WITH CONCRETE WHERE ANY PLUMBING AND/OR ELECTRICAL COMPONENTS HAVE BEEN REMOVED, INCLUDING INSIDE ALL TELEPHONE AND ELECTRICAL CLOSETS.
- PERFORM ALL WORK INDICATED ON DRAWINGS AND AS SPECIFICATIONS. PROVIDE ALL MATERIAL AND LABOUR REQUIRED TO COMPLETE ALL PHASES OF WORK.
- WHERE FLOOR SLAB IS UNEVEN, SHIM DOOR FRAMES TO SUIT AND PAINT SHIM TO MATCH FRAME FINISH.
- REPAIR ALL PARTITIONS AND CEILINGS AFTER THE MECHANICAL AND ELECTRICAL TRADES HAVE COMPLETED THEIR WORK.
- USE CADDY CLIPS TO ATTACH NEW PARTITIONS TO T-BAR CEILING ASSEMBLIES. DO NOT USE SCREWS TO ATTACH WALL TRACK TO T-BAR SYSTEM.
- UNLESS INDICATED OTHERWISE, PROVIDE METAL FASTENINGS AND ACCESSORIES IN SAME TEXTURE, COLOUR AND FINISH AS ADJACENT MATERIALS.
- KEEP EXPOSED FASTENINGS TO A MINIMUM. SPACE EVENLY AND INSTALL NEATLY. FASTENINGS WHICH CAUSE SPALLING OR CRACKING OF MATERIAL TO WHICH ANCHORAGE IS MADE ARE NOT ACCEPTABLE.
- USE HEAVY HEXAGON HEADS, SEMI-FINISHED UNLESS OTHERWISE SPECIFIED. USE NO. 304 STAINLESS STEEL FOR EXTERIOR AREAS. BOLTS MAY NOT PROJECT MORE THAN ONE DIAMETER BEYOND NUTS. USE PLAIN TYPE WASHERS ON EQUIPMENT. SHEET METAL AND SOFT GASKET LOCK TYPE WASHERS WHERE VIBRATIONS OCCUR. USE RESILIENT WASHERS WITH STAINLESS STEEL.
- PREVENT OVERLOADING OF PARTS OF BUILDING. DO NOT CUT, DRILL OR SLEEVE LOAD BEARING STRUCTURAL MEMBER, UNLESS SPECIFICALLY INDICATED, WITHOUT WRITTEN APPROVAL OF CONSULTANT.
- PROTECT WORK AND EXISTING PROPERTY, ADJACENT PUBLIC AND PRIVATE PROPERTY AND WORK OF OTHER SECTIONS FROM DAMAGE WHILE DOING WORK.
- PROTECT ELEVATORS, LOBBY, FLOORS, WALLS AND DOORS AGAINST DAMAGE. SPREAD OF DUST AND DIRT. TAKE SPECIAL MEASURES WHEN MOVING HEAVY LOADS OR EQUIPMENT, THIS INCLUDES THE NEW CARPET INSTALLED THROUGHOUT THE SPACE BY OTHERS.
- REMOVE ALL PERIMETER WINDOW BLINDS AT THE START OF CONSTRUCTION AND DISPOSE OF.
- CONSTRUCT NEW SOUND Baffle IN PERIMETER CONVECTOR ENCLOSURE WHERE NEW WALL MEETS CONVECTOR.
- PROTECT, RELOCATE OR MAINTAIN EXISTING ACTIVE SERVICES. WHEN SERVICES ARE ENCOUNTERED, CAP OFF IN MANNER APPROVED BY AUTHORITY HAVING JURISDICTION. STAKE AND RECORD LOCATION OF CAPPED SERVICE.
- PERFORM REMEDIAL WORK REQUIRED TO REPAIR OR REPLACE PARTS OR PORTIONS OF WORK IDENTIFIED AS DEFECTIVE OR UNACCEPTABLE. CO-ORDINATE ADJACENT AFFECTED WORK AS REQUIRED.
- CONTRACTOR TO ENSURE THAT ALL PARTITIONING AND CEILINGS ARE REPAIRED AFTER THE MECHANICAL AND ELECTRICAL TRADES HAVE COMPLETED THEIR WORK.
- CONTRACTOR TO ENSURE THAT ALL AREAS ARE CLEANED ON AN ONGOING BASIS AS PER CLEANING SPECIFICATIONS (SECTION #01710) PRIOR TO THE TENANT OCCUPANCY.
- MOUNTING HEIGHTS OF ELECTRICAL COMPONENTS AS FOLLOWS: SWITCHES: 1200 MM A.F.F., THERMOSTATS: 1830 MM A.F.F., OUTLETS @ 405 MM A.F.F.
- PREFERENCE IS TO BE GIVEN TO PRODUCTS THAT ARE REGIONALLY SOURCED AND MANUFACTURED, AND THAT CONTRIBUTE TO LEEDS CRITERIA.
- THE FLOOR BELOW THIS LEVEL IS FULLY OCCUPIED AND HAS T-BAR CEILING THROUGHOUT. THE SLAB TO SLAB HEIGHT IS SIMILAR TO THIS FLOOR. ACCESS TO FLOOR BELOW MUST BE AFTER WORK HOURS, AND SPACE MUST BE CLEANED AND TURNED OVER TO THE OCCUPANT FOR WORK HOURS.

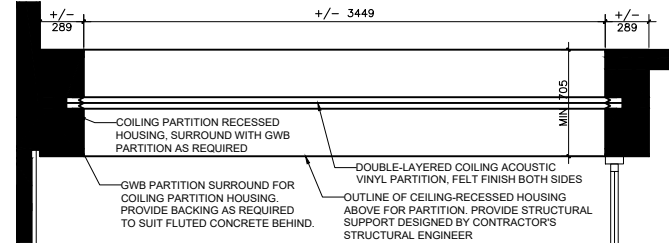
*ANY WORK WHICH EFFECTS THE TENANT OCCUPIED AREA WILL REQUIRE CLEANING AND CEILING RE-INSTATEMENT ETC. TO PROVIDE THE OCCUPANT WITH A CLEAN AND FUNCTIONING WORK ENVIRONMENT.

*ANY WORK WHICH IS INCOMPLETE AT THE TIME OF FLOOR TURNOVER, AFTER CONSTRUCTION WORK WILL BE REQUIRED TO TAKE PLACE AFTER NORMAL WORKING HOURS, BETWEEN THE HOURS OF 6:00 P.M. AND 6:00 A.M. AND AREAS OF WORK TO BE CLEANED AT THE END OF EACH SHIFT.

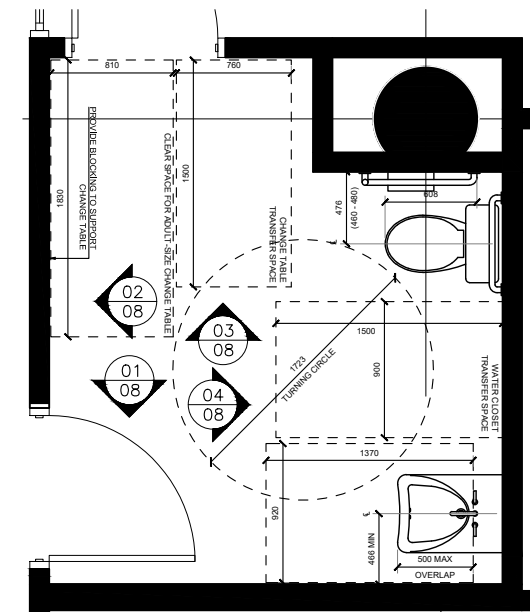
*CONTRACTOR TO ENSURE THAT THE AFTER HOUR SITE IS CLEAN AND RETURNED TO NORMAL WORKING HOUR CONDITION PRIOR TO LEAVING THE SITE.

*CONTRACTOR TO PROVIDE A SECURE SPACE FOR ANY WORK INCOMPLETE AT THE TIME OF TENANT TURN OVER.

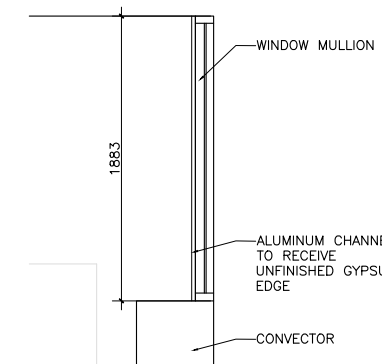
*WHERE SLAB-TO-SLAB PARTITIONS ARE BUILT, LIGHT FIXTURES HAVE TO BE FARTHER OUT AND REINSTALLED AFTERWARDS, AND T-BARS CUT.



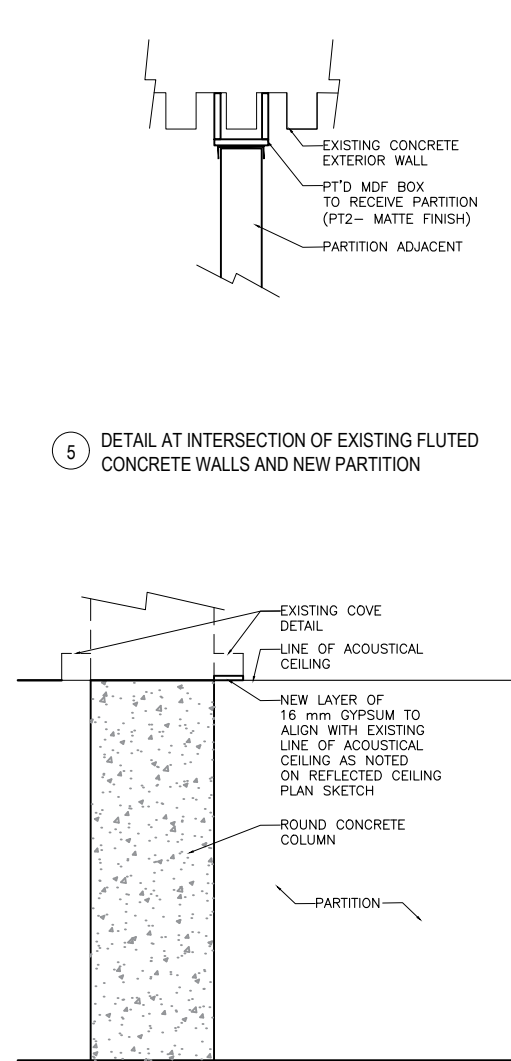
8 OPERABLE WALL DETAIL



9 UNIVERSAL WASHROOM



4 DETAIL AT INTERSECTION OF GYPSUM WALLBOARD PARTITION AND EXTERIOR WINDOW MULLION



5 DETAIL AT INTERSECTION OF EXISTING FLUTED CONCRETE WALLS AND NEW PARTITION

3 EXISTING COVE CEILING TO BE FILLED AS NOTED

CONSTRUCTION LEGEND

SYMBOL	DESCRIPTION
	EXISTING PARTITION TO REMAIN
	PARTITION TO BE SLAB TO US OF CEILING (154mm) 1 LAYER OF 16mm GYPSUM BOARD, ACOUSTIC CAULKING TOP & BOTTOM, 50mm METAL STUDS @ 405mm O.C. WITH ATTENUATION BATTS IN CAVITY, 1 LAYER OF 16mm GYPSUM BOARD, ACOUSTIC CAULKING TOP & BOTTOM. DESIGNED TO STC RATING: 48 (TO TOP OF PARTITION ONLY)
	PARTITION TO BE SLAB TO US OF CEILING C/W DRYWALL BATTLE (154mm) 1 LAYER OF 16mm GYPSUM BOARD, ACOUSTIC CAULKING TOP & BOTTOM, 50mm METAL STUDS @ 405mm O.C. WITH ATTENUATION BATTS IN CAVITY, 1 LAYER OF 16mm GYPSUM BOARD, ACOUSTIC CAULKING TOP & BOTTOM. DESIGNED TO STC RATING: 48
	PERIMETER PARTITION, PARTITION TO BE SLAB TO SLAB (103mm) 1 LAYER OF 13mm GYPSUM BOARD ONE SIDE, ACOUSTIC CAULKING TOP & BOTTOM, 50mm METAL STUDS @ 405mm O.C. WITH ATTENUATION BATTS IN CAVITY, 2 LAYERS OF 13mm GYPSUM BOARD, ACOUSTIC CAULKING TOP & BOTTOM. DESIGNED TO STC RATING: 48
	PARTITION TO BE SLAB TO SLAB C/W WIRE MESH (140mm) 2 LAYERS OF 16mm GYPSUM BOARD ONE SIDE, ACOUSTIC CAULKING TOP & BOTTOM, 15mm #10 (18ga) ROLLED AND FLATTENED METAL MESH FASTENED TO STUDS WITH STEEL POP NUTS AND FENDER WASHER AT 200mm O.C., 50mm METAL STUDS @ 405mm O.C. WITH ATTENUATION BATTS IN CAVITY, 1 LAYER OF 16mm GYPSUM BOARD, ACOUSTIC CAULKING TOP & BOTTOM. DESIGNED TO STC RATING: 54
	DEMOUNTABLE PARTITION, STICK-BUILT SYSTEM TO ALLOW CONFIGURATION OF PANELS IN ADJUSTABLE MESH TO SUIT PARTITION PLAN FRAMES TO BE EXTRUDED ALUMINUM WITH A TWIN RECTILINEAR PROFILE AND TO ACCOMMODATE VARIOUS WIDTHS OF GLASS PANELS LONG PLUS FOR SLIDING DOORS. WHERE THIS PARTITION TYPE FORMS A CORNER WITH THE SAME PARTITION TYPE, CORNER TO BE FRAMELESS GLASS. THE DEMOUNTABLE PARTITION VENDOR IS RESPONSIBLE FOR ALL SEISMIC BRACING OF THEIR SYSTEM.
	OPERABLE COILING PARTITION, MOTORIZED, CEILING HOUSED WITH RECESSED WALL TRACKS BRACING TO STRUCTURE TO BE DESIGNED BY CONTRACTOR'S OWN ENGINEER. FINISH: ACOUSTIC VINYL WITH FELT COVER BOTH SIDES. DESIGNED TO STC RATING: 48
	P2 PARTITION WITH DEMOUNTABLE PARTITION FASCIA MOUNTED ATOP. FINISHED FASCIA TO INTEGRATE POWER, SUPPORT FOR TV SCREEN, AND TABLE SURFACE.
	PARTITION TO BE SLAB TO US OF CEILING (172mm) 1 LAYER OF 16mm GYPSUM BOARD, ACOUSTIC CAULKING TOP & BOTTOM, 140mm METAL STUDS @ 405mm O.C., 100mm METAL STUDS @ 405mm O.C. WITH ATTENUATION BATTS IN CAVITY, 1 LAYER OF 16mm GYPSUM BOARD, ACOUSTIC CAULKING TOP & BOTTOM. DESIGNED TO STC RATING: 57
	INDICATES DOOR #. SEE DOOR SCHEDULE
	INDICATES ROOM #
	INDICATES DETAILS OR ELEVATIONS SEE DETAILS SHEETS

- INSTALL BLOCKING IN WALL TO SUPPORT TV SCREEN. ADJACENT NUMBER INDICATES SIZE OF TELEVISION (DIAGONAL DIMENSION).
- FRONT FACE OF COUNTER AND BANQUETTE TO ALIGN.
- REFER TO COVE CEILING TREATMENT DETAIL.
- REFER TO WALL TO RADIATOR TREATMENT DETAIL.
- REFER TO FLUTED CONCRETE TREATMENT DETAIL AT NEW WALL.
- CONTRACTOR TO INSTALL BASE BUILDING BLINDS THROUGHOUT SUITE. COLOR NAME: OYSTERCHARCOAL (CHARCOAL TO BE INSTALLED ON THE INSIDE). AVERAGE OPENNESS TO BE AS INDICATED ON DRAWING: (A) 1%, (B) 1% AND (C) 1%.
- CONTRACTOR TO PROVIDE SAMPLE FOR APPROVAL PRIOR TO ORDERING.
- PROVIDE BLOCKING FOR SUPPLY AND INSTALL GLASSBOARD AT 1200 mm HIGH x 1815 mm TALL. LOCATE 1500 mm ABOVE FINISHED FLOOR, CENTERED WITHIN WALL SURFACE.
- REFER TO OPERABLE WALL DETAIL.
- REFER TO UNIVERSAL WASHROOM DETAIL.
- 38 mm PLASTIC LAMINATE COUNTER SURFACE (DO NOT WRAP EDGES), SIZE AS PER DWG - FINISH TO BE PL3.
- INDICATES BLOCKING IN WALL TO SUPPORT GLASSBOARD AT 1218 mm WIDE x 914 mm HIGH. PURCHASE OF GLASSBOARD IS PART OF CONTRACT. MOUNT GLASSBOARDS AT 1000 mm O.C. ABOVE FINISHED FLOOR. PROVIDE CONCEALED MOUNTING HARDWARE.
- INDICATES BLOCKING IN WALL TO SUPPORT THREE MAGNETIC GLASSBOARDS. REFER TO ELEVATION. PROVIDE CONCEALED MOUNTING HARDWARE.
- RECEPTACLES ON THIS SITE TO BE INSTALLED AT 915 mm (POWER AND DATA).
- APPLY TWO LAYERS OF 16 mm GYPSUM WALLBOARD ATOP EXISTING DEMOUNTABLE PARTITION TO BE CONCEALED. DEMOUNTABLE FINISH. PROVIDE CLEAN EDGE AT DOOR FRAME. STAGGER JOINTS OF GYPSUM WALLBOARD LAYERS.
- FREESTANDING MILLWORK TO SURROUND RECEPTION DESK (RECEPTION DESK TO BE PROVIDED BY FURNITURE VENDOR. REFER TO DETAILS).
- CUSTOM MILLWORK HEIGHT ADJUSTABLE DESK. REFER TO DETAILS. PROVIDE HEIGHT ADJUSTABLE DESK BASE IN BLACK POWDER COATED METAL FINISH.

Canada

Public Works and Government Services Canada

Travaux publics et services gouvernementaux Canada

73 Breezhill Avenue North
Ottawa, ON K1Y 2H6
tel: 613.232.4499
fax: 613.232.4187
www.4te.ca

Contractor to verify all dimensions & conditions on site and immediately notify the engineer of all discrepancies.

L'entrepreneur doit vérifier toutes les dimensions et conditions sur le site et aviser immédiatement l'ingénieur de toute divergence.

8	ADDENDUM 004	20200617
7	ADDENDUM 001	20200603
6	ISSUED FOR TENDER R1	20200416
5	ISSUED FOR PERMIT	20200401
4	ISSUED FOR TENDER	20200401
3	ISSUED FOR 100% REVIEW	20200316
2	ISSUED FOR 99% REVIEW	20200224
1	ISSUED FOR 66% REVIEW	20200206

revisions	description	date
	A detail no. no. du detail B location drawing no. sur dessin no. C drawing no. dessin no.	

project NCR - QUEBEC
GC WORKPLACE FIT-UP

drawing CONSTRUCTION PLAN

Designed By	4t6 Inc.	Conçu par	
Date		(yyyy/mm/dd)	
Drawn By	AD	Dessiné par	
Date		(yyyy/mm/dd)	
Reviewed By	TH	Examiné par	
Date		(yyyy/mm/dd)	
Approved By		Approuvé par	
Date		(yyyy/mm/dd)	
Tender		Soumission	
Project Manager	EVA LEFEBRE	Administrateur de projets	
Project no.		No. du projet	
	R.105793.008		
Drawing no.		No. du dessin	
	ID-02		