

# INSTITUTE OF OCEAN SCIENCES GUARD HOUSE REPLACEMENT

## DRAWING LIST - CIVIL

TITLE SHEET AND DRAWING LIST	C-01
WATER, STORM, AND GRADING PLAN	C-02
SANITARY SERVICE	C-03
DETAILS	C-04

**FISHERIES AND OCEANS CANADA**  
 REAL PROPERTY AND SAFETY AND SECURITY

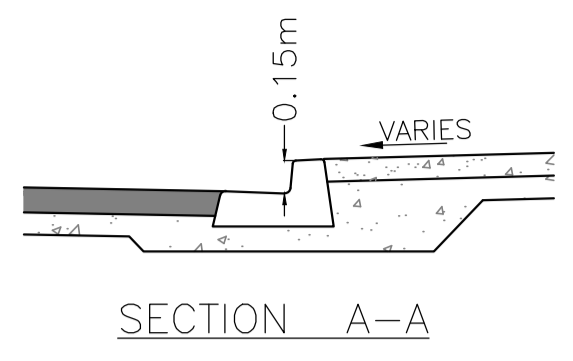
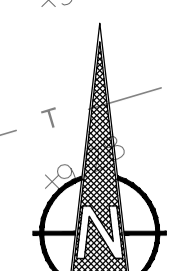
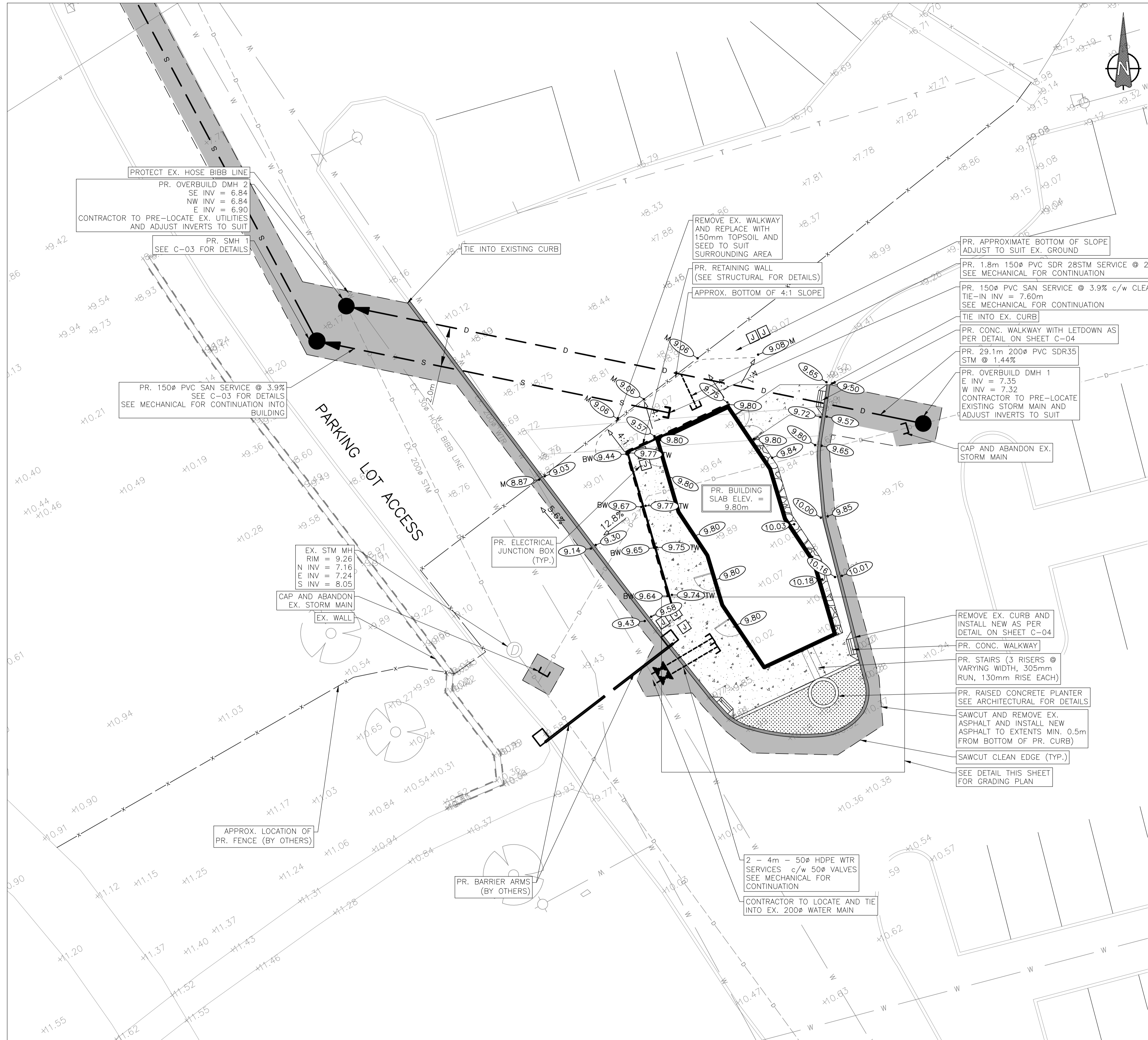


DESIGNED	SV
DRAWN	BN
CHECKED	SV
RECOMMENDED	SV
APPROVED	
APPROVED	



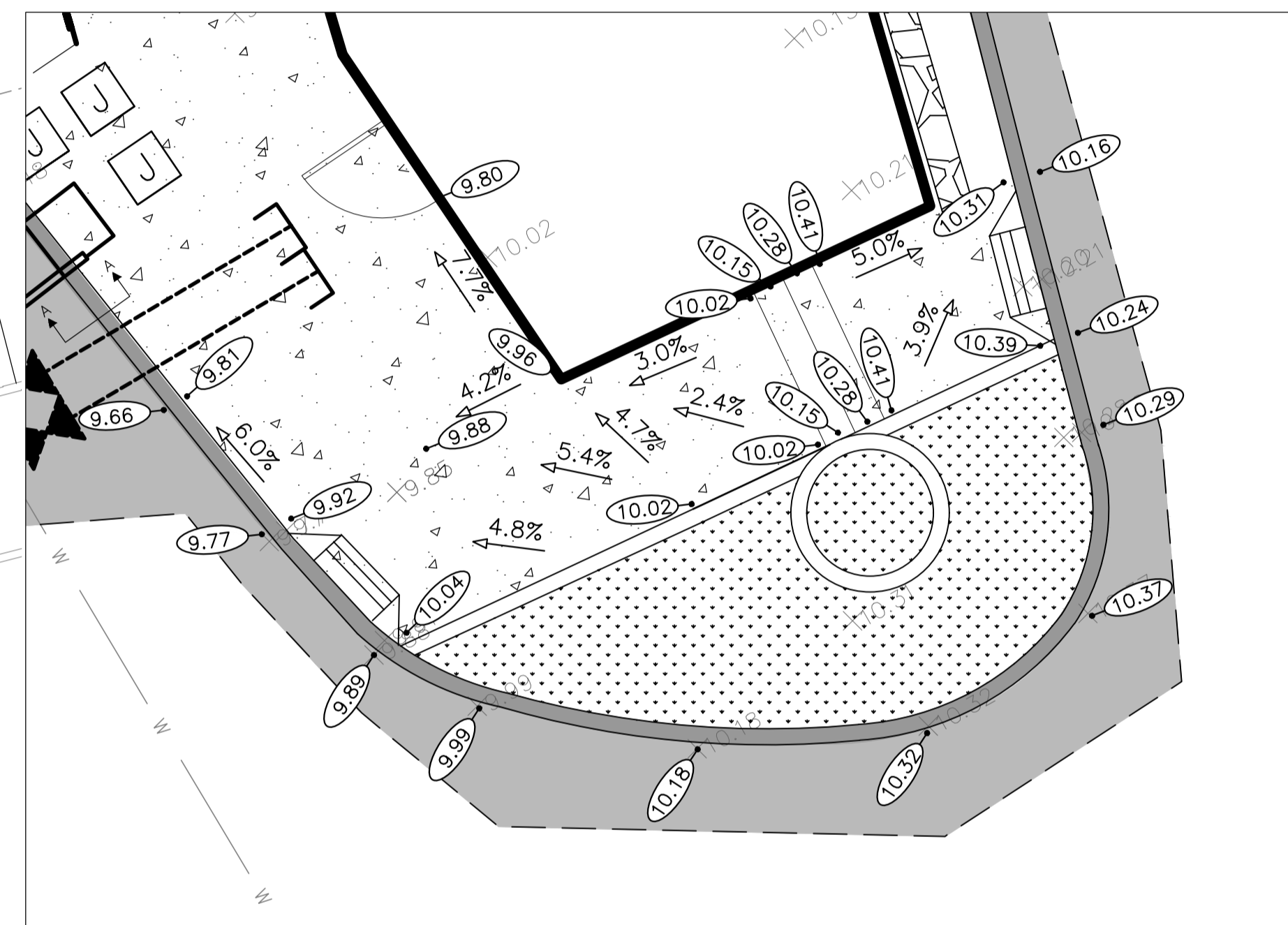
SCALE	NTS
START DATE	
DRAWING NUMBER	<b>C-01</b>
OF	4
REVISION	2

DWG. NO.	DRAWING REFERENCES	NOTES	NO.	DATE	REVISIONS	APPROVED
			3	20/04/24	TENDER SUBMISSION	
			3	20/04/10	99% DESIGN SUBMISSION	
			2	19/10/30	90% DESIGN SUBMISSION	
			1	19/09/10	50% DESIGN SUBMISSION	



**CONCRETE WALKWAY AND BARRIER CURB**

SCALE: NTS  
SEE SHEET C-04 FOR CURB DETAILS



**GRADING DETAIL**  
SCALE = 1:50

LEGEND	
PR. ASPHALT	
PR. CURB	
PR. LANDSCAPING	
PR. GRAVEL	
EX. GAS	G
EX. TELEPHONE	T
EX. WATER	W
EX. SANITARY	S
EX. FENCE LINE	X
EX. EDGE OF PAVEMENT	
EX. EDGE OF BUILDING	
EX. VALVE	
EX. SANITARY MANHOLE	
EX. STREET LIGHT	
EX. SIGN	
PR. ELEVATION	XX.XX
PR. GRADING	X.XX%

**FISHERIES AND OCEANS CANADA**  
REAL PROPERTY AND SAFETY AND SECURITY



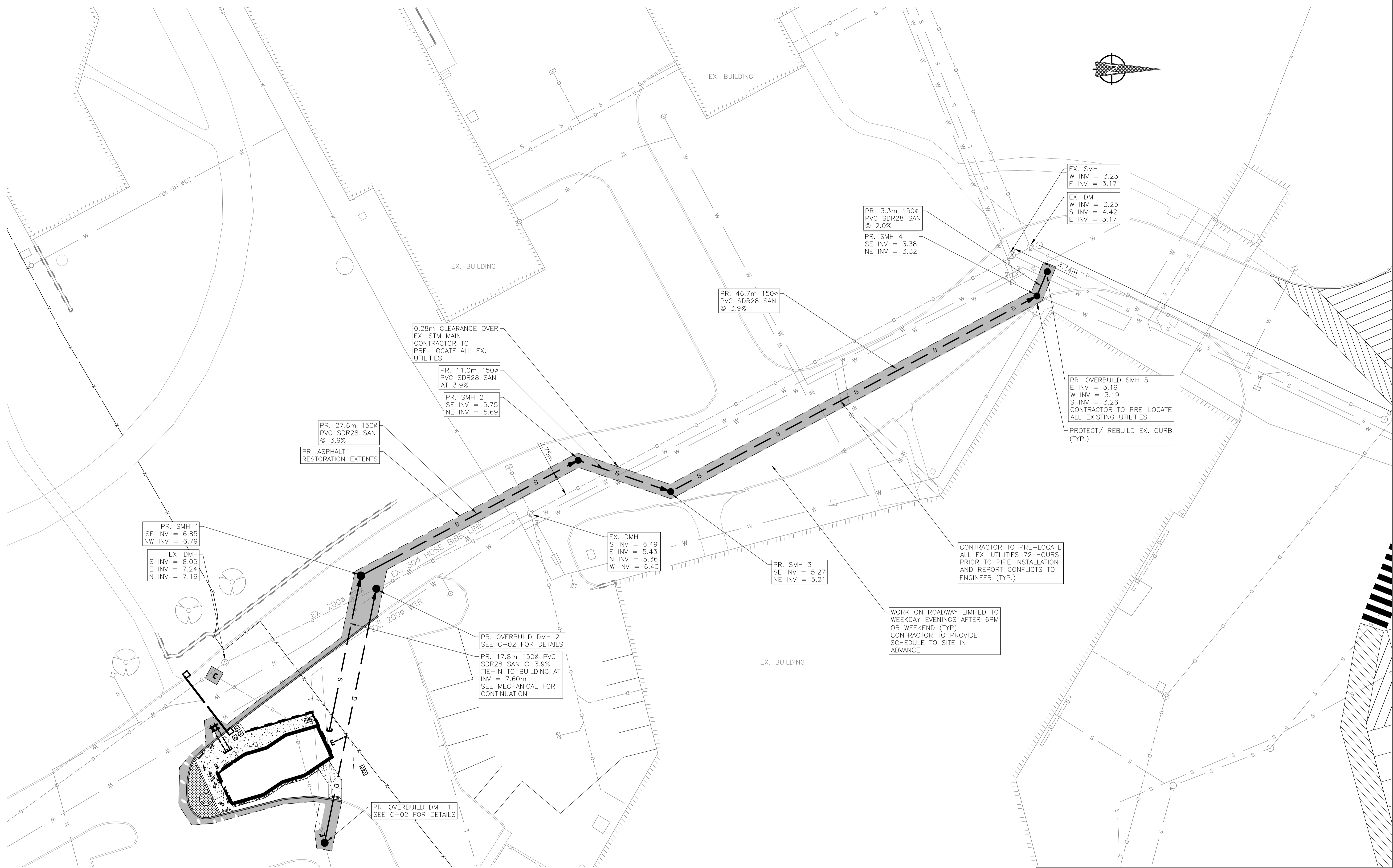
NO.	DATE	REVISIONS	DESIGNED	SV
4	20/04/24	99% DESIGN SUBMISSION	DRAWN	BN
3	20/04/10	99% DESIGN SUBMISSION	CHECKED	SV
2	19/10/30	90% DESIGN SUBMISSION	RECOMMENDED	SV
1	19/09/10	50% DESIGN SUBMISSION	APPROVED	



SCALE	1:100
START DATE	
DRAWING NUMBER	<b>C-02</b>
OF	4
REVISION	2

DWG. NO.	DRAWING REFERENCES

NOTES



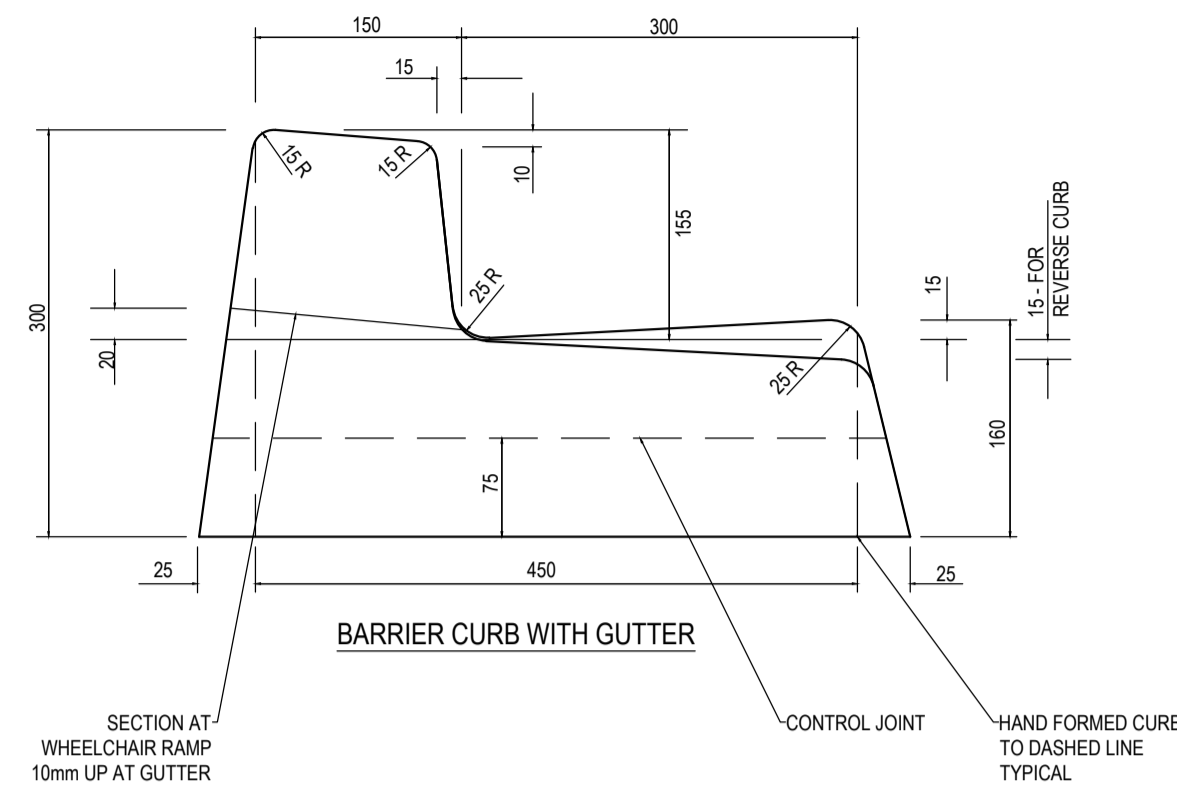
**FISHERIES AND OCEANS CANADA**  
REAL PROPERTY AND SAFETY AND SECURITY



NO.	DATE	REVISIONS	DESIGNED	SV
3	20/04/24	TENDER SUBMISSION	DRAWN	BN
3	20/04/10	99% DESIGN SUBMISSION	CHECKED	SV
2	19/10/30	90% DESIGN SUBMISSION	RECOMMENDED	SV
1	19/09/10	50% DESIGN SUBMISSION	APPROVED	
			APPROVED	

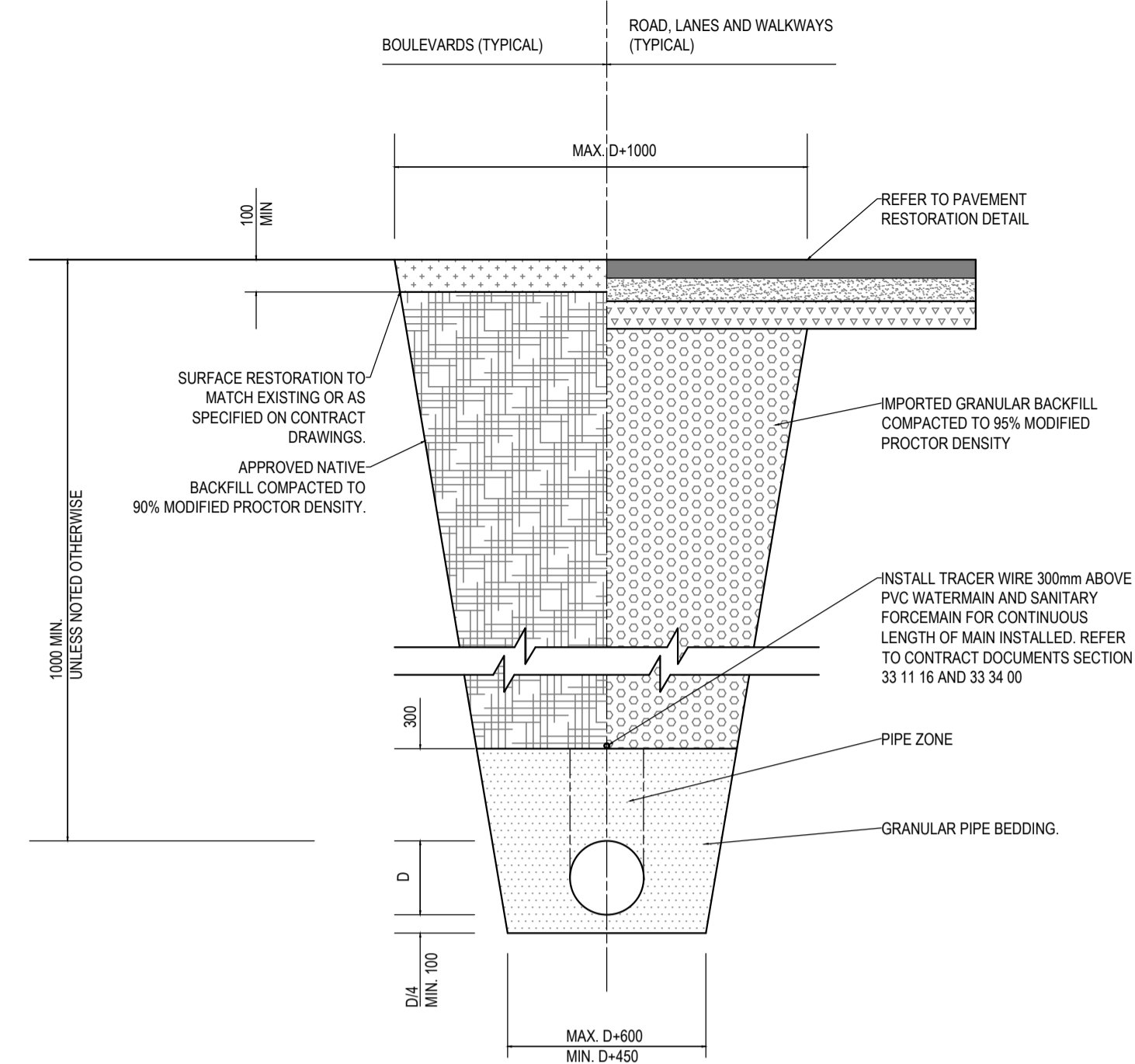
SCALE		1:200
START DATE		
DRAWING NUMBER		<b>C-03</b>
OF		4
REVISION		2

DWG. NO.	DRAWING REFERENCES	NOTES



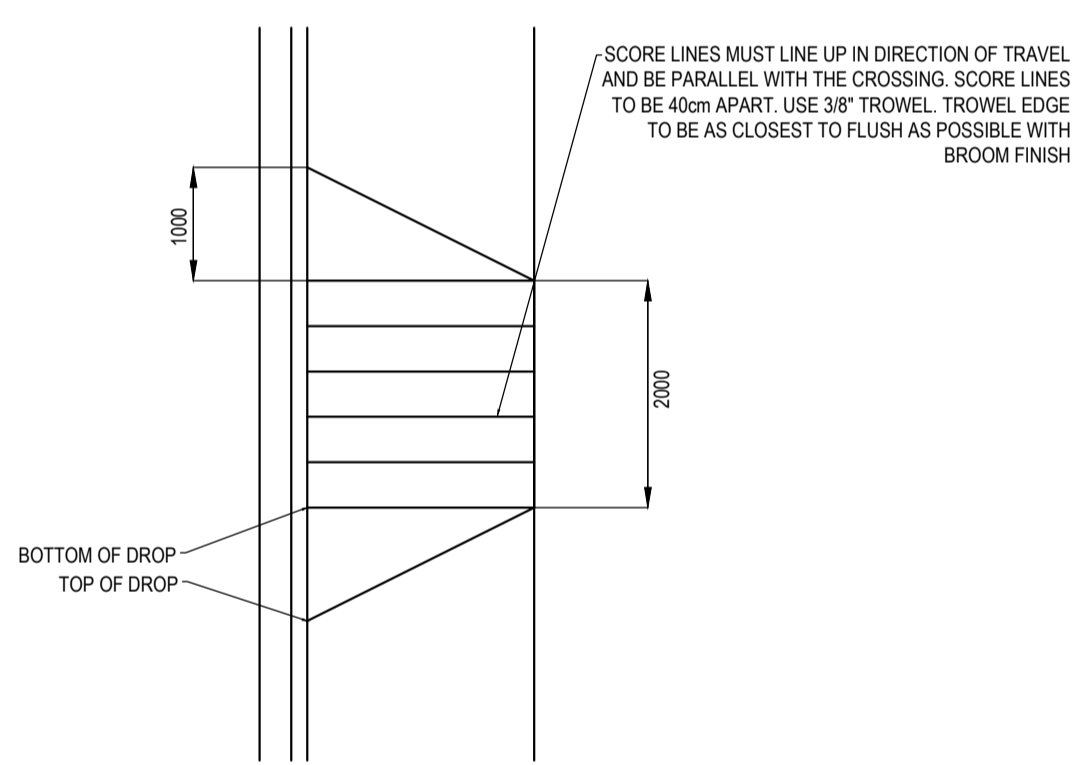
- NOTES**
- SECTIONS SHOWN ARE FOR MACHINE EXTRUDED CURBS.
  - REFER TO CONTRACT DOCUMENTS AND SECTION 32 16 15 FOR DETAILED SPECIFICATIONS.
  - REFER TO CONCRETE SIDEWALK AND CURB DETAILS FOR INSTALLATION.
  - INSTALL SURVEY MONUMENT PER SECTION 32 16 15 AND AS DIRECTED BY DCC REPRESENTATIVE.

**CONCRETE CURBS - NARROW BASE**  
SCALE: NTS

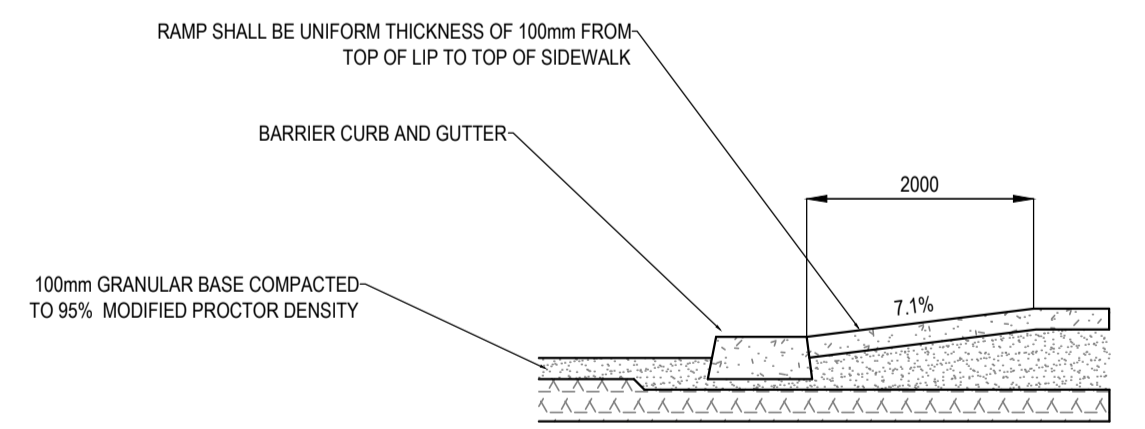


- NOTE:**
- TRENCHING TO COMPLY WITH ALL REQUIREMENTS OF THE WORKERS' COMPENSATION BOARD.
  - REFER TO CONTRACT DOCUMENTS AND SECTION 31 05 16 FOR DETAILED SPECIFICATIONS.

**UTILITY TRENCH**  
SCALE: NTS

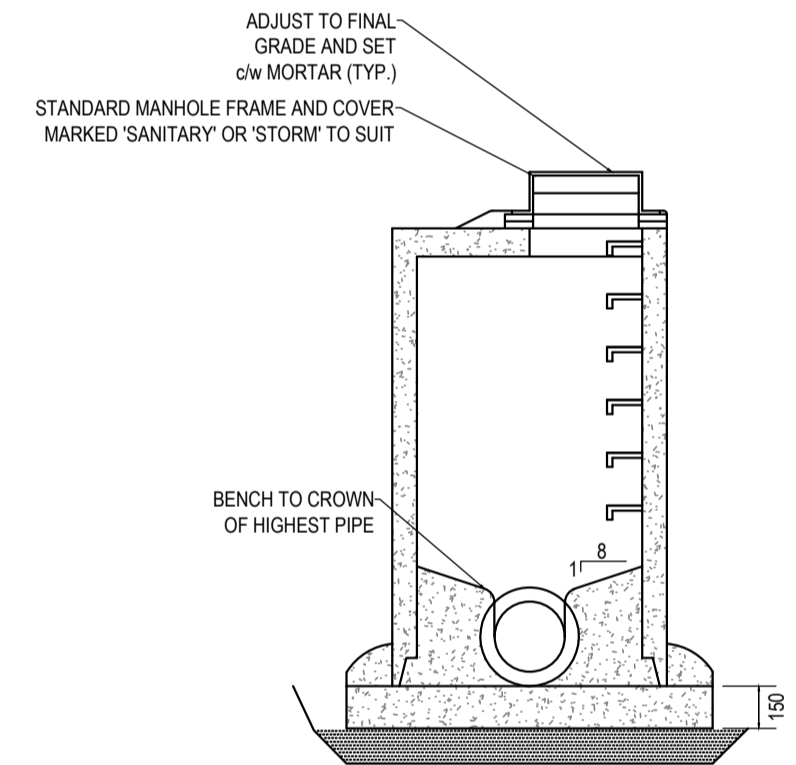


**PLAN**

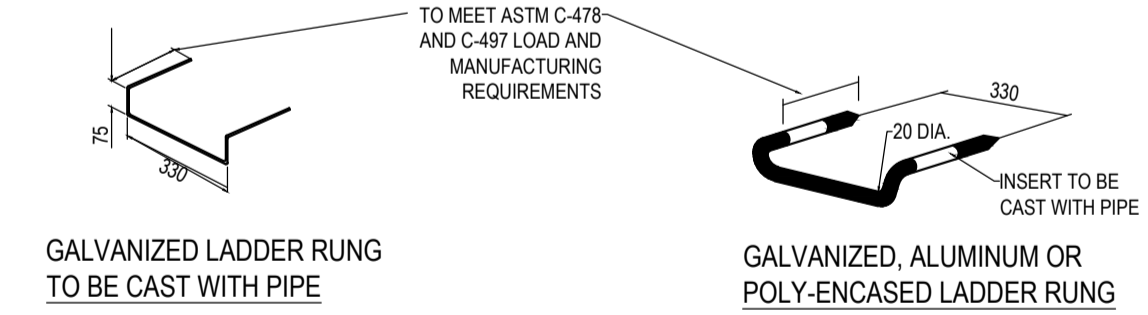


**SECTION**

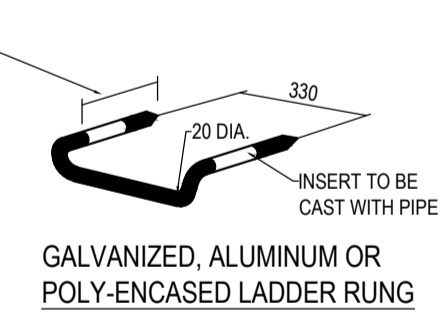
**SINGLE RAMP LETDOWN WITH PARALLEL SCORING**  
SCALE: NTS



**STANDARD 1050mm MANHOLE**



**GALVANIZED LADDER RUNG TO BE CAST WITH PIPE**



**GALVANIZED, ALUMINUM OR POLY-ENCASED LADDER RUNG**

- NOTE:**
- DETAILS ARE DRAWN FOR PRECAST RISERS ON CAST-IN-PLACE BASE. PRECAST BASES APPROVED BY DCC REPRESENTATIVE ARE ACCEPTABLE.
  - MAXIMUM DEPTH TO FIRST RUNG IS 500mm. WHEN HAND HOLD IS INSTALLED BETWEEN TOP AND FIRST RUNG, MAXIMUM DEPTH MAY BE INCREASED TO 650mm.
  - FOR MANHOLES OVER 1200mm DIA. BASE THICKNESS TO BE 200mm.
  - REFER TO STANDARD MANHOLE CONNECTION DETAILS.
  - REFER TO CONTRACT DOCUMENTS SECTION 33 05 13 FOR DETAILED SPECIFICATIONS.

**1050Ø MANHOLE**  
SCALE: NTS



NO.	DATE	REVISIONS	DESIGNED	SV
4	20/04/24	TENDER SUBMISSION	DRAWN	BN
3	20/04/10	99% DESIGN SUBMISSION	CHECKED	SV
2	19/10/30	90% DESIGN SUBMISSION	RECOMMENDED	SV
1	19/09/10	50% DESIGN SUBMISSION	APPROVED	



SCALE	NTS
START DATE	
DRAWING NUMBER	<b>C-04</b>
OF	4
REVISION	2