

NATIONAL RESEARCH COUNCIL CANADA LABORATORIES - FREIGHT ELEVATOR MODERNIZATION (NRC PROJECT #5813) 100 SUSSEX RD, OTTAWA ONTARIO ISSUED FOR TENDER - FEBRUARY 21, 2020

CLIENT:
PRIESTMAN NEILSON & ASSOCIATES LTD.
160 PASEO PRIVATE
NEPEAN, ON K2G 4K6

ARCHITECT:
ALCAIDE WEBSTER ARCHITECTS INC
1320 CARLING AVE #202
OTTAWA, ON K1Z 7K8

STRUCTURAL ENGINEER:
LEIBE ENGINEERING ASSOC.
22 ANTARES DR. #011
OTTAWA, ON K2E 7Z6

ARCHITECTURAL DRAWINGS:

5813 - A0 COVER SHEET, SPECIFICATIONS
5813 - A00 CONTEXT PLAN, DEMOLITION PLAN
5813 - A050 DEMOLITION SECTIONS
5813 - A100 NEW CONSTRUCTION - PLAN DETAILS, INTERIOR ELEVATIONS
5813 - A101 NEW CONSTRUCTION - SECTION DETAILS

STRUCTURAL DESIGN

- THE STRUCTURAL NOTES AND DESIGN CONTAINED WITHIN THESE DRAWINGS ARE BY LEIBE ENGINEERING & ASSOCIATES. STRUCTURAL SHOP DRAWINGS BY AN ENGINEER LICENSED IN THE PROVINCE OF ONTARIO SHALL BE SUBMITTED FOR APPROVAL, FOR ALL STRUCTURAL COMPONENTS.

GENERAL NOTES

- PROTECT ALL EXISTING PERIMETER WALLS FOR THE DURATION OF THE PROJECT. CONTRACTOR TO PROTECT ALL AREAS OUTSIDE THE CONTRACT AREA FROM DEBRIS AND DUST RESULTING FROM DEMOLITION AND TO KEEP SITE CLEAN AND ORGANIZED THROUGHOUT DEMOLITION.
- DO NOT ALTER FLOOR SUPPORTING STRUCTURAL BUILDING ELEMENTS IN ANY WAY. ALL FINISH WORK TO BE PERFORMED AROUND EXISTING STRUCTURE. SITE VERIFY ALL PRECONDITIONS OF EXISTING METAL STRUCTURES ON EACH FLOOR TO ENSURE ALL FLOOR SUPPORTING STRUCTURAL ELEMENTS REMAIN INTACT ONCE DEMOLISHED FLOOR / ELEVATOR COMPONENTS ARE REMOVED.
- CONTRACTOR TO PATCH, REPAIR AND MAKE GOOD ALL EXISTING GYPSUM BOARD OR OTHER SURFACES REQUIRING A SMOOTH FINISHED SURFACE, READY FOR PAINT OR OTHER FINISH AS REQUIRED. PATCH AND REPAIR C/W PAINT ALL EXISTING ADJACENT OR DAMAGED SURFACES AFFECTED BY WORK UNDER THIS CONTRACT AS TO MATCH EXISTING SURROUNDING WALLS, CEILINGS AND FLOOR SURFACES.
- CONTRACTOR TO COORDINATE WITH OWNER'S REPRESENTATIVE TO ENSURE EXISTING EQUIPMENTS AND SYSTEMS IN WORK AREAS TO BE REMOVED/RELOCATED AS REQUIRED PRIOR TO COMMENCEMENT OF WORK.
- CONTRACTOR TO VERIFY ALL DRAWINGS, SPECIFICATIONS, DIMENSIONS AND SITE CONDITIONS PRIOR TO COMMENCEMENT OF DEMOLITION WORK. REPORT TO THE DEPARTMENTAL REPRESENTATIVE AND TO THE CONSULTANT, IMMEDIATELY, FOR ANY OMISSIONS AND/OR DISCREPANCIES.
- INSTALLATION OF ENTRANCE FRAME TO CONFORM TO ENTRANCE FRAME INSTALLATION GUIDE SUPPLIED BY ELEVATOR SUPPLIER. ENSURE ALL CLEARANCE TOLERANCES AND ALIGNMENT OF ELEVATOR AND ELEVATOR DOOR COMPONENTS COMPLY WITH SUBMITTED SHOP DRAWINGS.
- ENSURE INSTALLATION OF ELEVATOR GUIDES AND ELEVATOR CAR ALLOW MINIMUM CLEARANCES AS REQUIRED FOR BI-PARTING PASS DOOR INSTALLATION. SITE CONFIRM ELEVATOR SHAFT DIMENSIONS PRIOR TO MANUFACTURING OF ELEVATOR COMPONENTS TO ENSURE MINIMUM RUNNING CLEARANCES OF CAR PLATFORM, CAR GATE AND BI-PARTING PASS DOORS ARE MET.
- PAY CAREFUL ATTENTION TO ARTISTIC ELEMENTS OF THE BUILDING ELEVATOR DOORS, DOOR FRAMES, AND ADJACENT WALLS AND VESTIBULE ELEVATIONS WHEN REMOVING DEMOLISHED COMPONENTS AND WHEN INSTALLING NEW COMPONENTS TO ENSURE PRESERVATION OF BUILDING'S CHARACTER.

SPECIFICATIONS:

GENERAL CONDITIONS

COORDINATE THE PROGRESS OF THE WORK, PROGRESS SCHEDULES, SUBMITTALS, THE USE OF THE SITE, TEMPORARY UTILITIES, CONSTRUCTION FACILITIES AND CONTROLS AND THE WORK OF THE VARIOUS SECTIONS TO ENSURE THE EFFICIENT AND ORDERLY INSTALLATION OF INTERDEPENDENT CONSTRUCTION ELEMENTS. COORDINATE LOCATIONS OF FIXTURES AND OUTLETS WITH FINISHED ELEMENTS. BEFORE INSTALLATION, INFORM THE CONSULTANT IF THERE IS A CONTRADICTION SITUATION. COORDINATE THE COMPLETION AND CLEAN-UP OF THE WORK OF SEPARATE SECTIONS IN PREPARATION FOR SUBSTANTIAL PERFORMANCE OF THE CONTRACT.

SUBMIT TO THE CONSULTANT FOR REVIEW, SHOP DRAWINGS, PRODUCT DATA AND SAMPLES AS SPECIFIED IN THE CONTRACT DOCUMENTS. REVIEW SHOP DRAWINGS, PRODUCT DATA AND SAMPLES PRIOR TO SUBMISSION. SUBMISSIONS WHICH DO NOT INCLUDE THE CONTRACTOR'S REVIEW STAMP WILL BE RETURNED BY THE CONSULTANT NOT REVIEWED. VERIFY THE FOLLOWING: FIELD MEASUREMENTS & FIELD CONSTRUCTION CRITERIA. COORDINATE EACH SUBMISSION WITH THE REQUIREMENTS OF THE WORK AND THE CONTRACT DOCUMENTS.

PRODUCTS, MATERIALS, EQUIPMENT AND ARTICLES INCORPORATED IN THE WORK SHALL BE NEW, NOT DAMAGED OR DEFECTIVE. AND OF THE BEST QUALITY FOR THE PURPOSE INTENDED. WORKMANSHIP SHALL BE THE BEST QUALITY, EXECUTED BY WORKERS EXPERIENCED AND SKILLED IN THE RESPECTIVE DUTIES FOR WHICH THEY ARE EMPLOYED. COMPLY WITH SPECIFIED STANDARDS AS A MINIMUM QUALITY FOR THE WORK, EXCEPT WHERE MORE STRINGENT TOLERANCES, CODES OR SPECIFIED REQUIREMENTS INDICATE HIGHER STANDARDS OR MORE PRECISE WORKMANSHIP. IN THE EVENT OF CONFLICT BETWEEN THE SPECIFIED MATERIALS AND THIS REQUIREMENT, INFORM THE CONSULTANT AND DO NOT PROCEED WITH THE WORK IN QUESTION UNTIL FURTHER INSTRUCTIONS ARE RECEIVED FROM THE CONSULTANT.

EXAMINE AREAS AND CONDITIONS UNDER WHICH WORK IS TO BE PERFORMED AND NOTIFY THE CONSULTANT IN WRITING OF CONDITIONS DETRIMENTAL TO THE PROPER AND TIMELY COMPLETION OF THE WORK. VERIFY THAT THE EXISTING SITE CONDITIONS AND SUBSTRATE SURFACES ARE ACCEPTABLE FOR SUBSEQUENT WORK. VERIFY THAT THE SUBSTRATE IS CAPABLE OF STRUCTURAL SUPPORT OR ATTACHMENT OF NEW WORK BEING APPLIED. VERIFY THE SPECIFIC CONDITIONS DESCRIBED IN INDIVIDUAL SPECIFICATION SECTIONS. VERIFY THAT UTILITY SERVICES ARE AVAILABLE, OF THE CORRECT CHARACTERISTICS, AND IN THE CORRECT LOCATIONS. DO NOT PROCEED WITH THE WORK UNTIL UNSATISFACTORY CONDITIONS HAVE BEEN CORRECTED. COMMENCEMENT OF THE INSTALLATION WILL BE CONSTRUED AS ACCEPTANCE OF THE SITE CONDITIONS.

THE CONTRACTOR SHALL BE ASSIGNED FOR THE CLEANLINESS OF ASSIGNED WORK AREAS TO THE SATISFACTION OF THE CONSULTANT. MAINTAIN THE WORK AREAS IN A NEAT AND ORDERLY CONDITION AT ALL TIMES. USE ONLY CLEANING MATERIALS RECOMMENDED BY THE MANUFACTURER OF THE SURFACE TO BE CLEANED. USE CLEANING MATERIAL ONLY ON SURFACES RECOMMENDED BY THE CLEANING MATERIAL MANUFACTURER. PRIOR TO SUBSTANTIAL PERFORMANCE, REMOVE SURPLUS PRODUCTS, TOOLS, CONSTRUCTION MACHINERY AND EQUIPMENT NOT REQUIRED FOR THE PERFORMANCE OF THE REMAINING WORK. REMOVE STAINS, DIRT AND SMUDGES FROM FINISHED SURFACES. CLEAN EXPOSED FINISHED SURFACES IN ACCORDANCE WITH RESPECTIVE MATERIAL MANUFACTURER'S RECOMMENDATIONS.

SELECTIVE DEMOLITION:

COMPLY WITH NATIONAL BUILDING CODE, PART 8, CONSTRUCTION SAFETY MEASURES AT CONSTRUCTION AND DEMOLITION SITES, AND PROVINCIAL REQUIREMENTS. DEMOLITION OF SPRAY OR TROWEL APPLIED ASBESTOS CAN BE HAZARDOUS TO HEALTH. SHOULD MATERIAL RESEMBLING SPRAY OR TROWEL-APPLIED ASBESTOS BE ENCOUNTERED, STOP WORK AND NOTIFY THE CONSULTANT IMMEDIATELY. DO NOT PROCEED UNTIL WRITTEN INSTRUCTIONS HAVE BEEN RECEIVED FROM THE CONSULTANT. PREVENT MOVEMENT, SETTLEMENT, OR OTHER DAMAGE TO ADJACENT STRUCTURES, UTILITIES, AND PARTS OF BUILDING TO REMAIN IN PLACE. PROVIDE BRACING AND SHORING REQUIRED. KEEP NOISE, DUST, AND INCONVENIENCE TO OCCUPANTS TO MINIMUM. PROTECT BUILDING SYSTEMS, SERVICES AND EQUIPMENT. PROVIDE TEMPORARY DUST SCREENS, COVERS, RAILINGS, SUPPORTS AND OTHER PROTECTION AS REQUIRED. NOTIFY THE CONSULTANT AND CITY OF OTTAWA REPRESENTATIVE BEFORE DISRUPTING BUILDING ACCESS OR SERVICES. NOTIFY AND OBTAIN APPROVAL FROM ON-SITE NRC REPRESENTATIVE BEFORE UNDERTAKING ANY CORING AND SAW-CUTTING EXISTING CONCRETE SLAB FOR MECHANICAL AND ELECTRICAL PENETRATIONS. ENSURE ALL CONCRETE SLABS ARE SCANNED PRIOR TO CORE-DRILLING AS INDICATED ON DRAWINGS.

SITE VERIFY ALL PRECONDITIONS OF EXISTING METAL STRUCTURES ON EACH FLOOR TO ENSURE ALL FLOOR SUPPORTING STRUCTURAL ELEMENTS REMAIN INTACT ONCE DEMOLISHED FLOOR / ELEVATOR COMPONENTS ARE REMOVED.

SHOP DRAWINGS:

CONTRACTOR TO PROVIDE STRUCTURAL SHOP DRAWINGS DESIGNED AND STAMPED BY A STRUCTURAL ENGINEER LICENSED IN THE PROVINCE OF ONTARIO FOR ALL NEW STRUCTURAL STEEL WORK. SHOP DRAWINGS TO BE CO-ORDINATED WITH ON-SITE CONDITIONS TO CONFIRM THE INTEGRITY OF ALL COMPONENTS. COORDINATE WITH ELEVATOR SPECIFICATIONS.

CONTRACTOR TO PROVIDE SHOP DRAWINGS FOR ELEVATOR CAB, FRAMING DETAILS, INTERIOR WALL CLADDING, SIGNAGE & ALL ASSOCIATED ELEVATOR WORK. COORDINATE WITH ELEVATOR SPECIFICATIONS.

MASONRY RESTORATION AND CLEANING

CONTRACT TO INCLUDE CLEANING OF EXISTING MASONRY SURFACES, REPLACEMENT OF ANY DAMAGED BRICK UNITS WITH NEW AND RECOVERED BRICK, RE-POINTING EXISTING MORTAR JOINTS, AND RE-ANCHORING BRICK VENEER. ANY NEW BRICK INSTALLED MUST BE COLOUR-MATCHED TO EXISTING COLOUR AND TEXTURE. SITE VERIFY CONDITION OF BRICK WORK AND HEIGHT OF EXISTING ELEVATOR CALL BUTTONS TO CONFIRM EXTENT OF BRICK REPAIR WORK REQUIRED PRIOR TO COMMENCEMENT OF THE WORK.

JOINTS SEALANTS:

SUBJECT TO COMPLIANCE WITH OTHER SPECIFICATION REQUIREMENTS, SELECT LOW-ODOUR, NON-CARCINOGENIC PRODUCTS IN ALL LOCATIONS FOR WHICH SUCH PRODUCTS ARE AVAILABLE. CONFORM TO MANUFACTURER'S RECOMMENDED TEMPERATURES, RELATIVE HUMIDITY, AND SUBSTRATE MOISTURE CONTENT FOR APPLICATION AND CURING OF SEALANTS INCLUDING SPECIAL CONDITIONS GOVERNING USE.

WARRANT THAT CAULKING WORK WILL NOT LEAK, CRACK, CRUMBLE, MELT, SHRINK, BUBBLE, RUN, LOSE ADHESION OR STAIN ADJACENT SURFACES FOR FIVE (5) YEARS.

SEALANTS:

SILICONIZED ACRYLIC LATEX SEALANT TO CAN/CSB-19.17 AND ASTM C834. STANDARD OF ACCEPTANCE: TREMFLEX 834 OR EQUIVALENT.

CONCRETE (TYPE N):

NON-SHRINK, HIGH PRECISION, EXTENDED FLOW, PORTLAND CEMENT BASED CONCRETE MATERIAL. DO NOT ADD PLASTICIZERS, ACCELERATORS, OR ADDITIVES TO MIXTURE.

SUBJECT TO COMPLIANCE WITH OTHER SPECIFICATION REQUIREMENTS, SELECT LOW-ODOUR, NON-CARCINOGENIC PRODUCTS IN ALL LOCATIONS FOR WHICH SUCH PRODUCTS ARE AVAILABLE. CONFORM TO MANUFACTURER'S RECOMMENDED TEMPERATURES, RELATIVE HUMIDITY, AND SUBSTRATE MOISTURE CONTENT FOR APPLICATION AND CURING OF GROUT INCLUDING SPECIAL CONDITIONS GOVERNING USE.

MANUFACTURER QUALIFICATIONS: MINIMUM 5 YEAR EXPERIENCE MANUFACTURING SIMILAR PRODUCTS. INSTALLER QUALIFICATIONS: MINIMUM 2 YEAR EXPERIENCE INSTALLING SIMILAR PRODUCTS

CONCRETE MATERIALS TO CONFORM TO CSA A23.1 AND IN ACCORDANCE WITH MANUFACTURER'S DIRECTIONS. GROUT TO MEET ALL REQUIREMENTS OF ASTM C1107 / CRD C821.

PAINTING:

THE WORK OF THIS SECTION INCLUDES THE PROVISION OF ALL LABOUR, MATERIALS, EQUIPMENT AND SERVICES REQUIRED AND SHALL CONFORM TO THE REQUIREMENTS OF THE OPCA ARCHITECTURAL SPECIFICATION MANUAL AND BE EXECUTED BY A COMPANY WITH MINIMUM FIVE (5) YEARS EXPERIENCE IN PAINTING WORK OF A SIMILAR NATURE.

NOTIFY THE CONSULTANT OF ANY POTENTIAL INCOMPATIBILITY BETWEEN THE SPECIFIED PAINT FORMULAE AND THE SUBSTRATES TO WHICH THEY ARE TO BE APPLIED. DO NOT PROCEED WITH THE WORK UNTIL DIRECTION HAS BEEN PROVIDED BY THE ARCHITECT.

DO NOT APPLY PAINT FINISH IN AREAS WHERE DUST IS BEING GENERATED UNTIL SUCH DUST HAS BEEN REMOVED FROM THE AREA. DO NOT APPLY PAINT WHEN SURFACE TEMPERATURES OR AMBIENT TEMPERATURES IN THE VICINITY OF THE WORK ARE BELOW 5°C (40°F). MINIMUM TEMPERATURES FOR LATEX PAINT APPLICATION ARE: INTERIOR WORK: 7°C (45°F)

PROVIDE TEMPORARY HEAT AS REQUIRED TO MAINTAIN SPECIFIED AMBIENT TEMPERATURES FOR 24 HOURS BEFORE AND 24 HOURS AFTER PAINTING. DO NOT APPLY PAINT WHEN THE RELATIVE HUMIDITY IN THE AREA OF THE WORK IS HIGHER THAN 85%. PROVIDE ADEQUATE VENTILATION.

QUALIFIED PRODUCTS: ONLY PAINT AND STAIN PRODUCTS LISTED IN THE OPCA ONTARIO APPROVED PRODUCTS LISTS FOR THE SPECIFIED FORMULAE ARE ACCEPTABLE FOR USE ON THIS PROJECT. PAINT MATERIALS FOR EACH COATING FORMULA TO BE PRODUCTS OF A SINGLE MANUFACTURER.

EXAMINE AREAS AND CONDITIONS UNDER WHICH WORK IS TO BE PERFORMED, INCLUDING ALL SURFACES REQUIRING PAINTING, AND NOTIFY THE CONSULTANT IN WRITING OF CONDITIONS DETRIMENTAL TO THE PROPER AND TIMELY COMPLETION OF THE WORK. RE-EXAMINE SURFACES AFTER PRIME COAT APPLICATION FOR EVIDENCE OF FURTHER DEFECTS IN THE SUBSTRATE. DO NOT PROCEED WITH THE WORK UNTIL UNSATISFACTORY CONDITIONS HAVE BEEN CORRECTED TO THE SATISFACTION OF CONSULTANT.

ADEQUATELY PROTECT OTHER SURFACES FROM PAINT AND DAMAGE AND MAKE GOOD ANY DAMAGE CAUSED BY THE WORK OF THIS SECTION. PROVIDE SUFFICIENT DROP CLOTHS, SHIELDS AND PROTECTIVE EQUIPMENT TO PREVENT SPRAY OR DROPPING FROM FOULING SURFACES NOT TO BE PAINTED.

PAINT FINISHING FORMULAE: THE PAINT FINISHING FORMULAE SPECIFIED HEREIN REFER TO INTERIOR AND EXTERIOR FINISHING SYSTEMS AND THE APPLICABLE QUALIFIED PRODUCTS SPECIFIED IN THE OPCA ONTARIO APPROVED PRODUCTS LISTS FOR THE SPECIFIED FORMULAE.

INTERIOR FINISHING FORMULAE: FOR PLASTER AND WALLBOARD WALL SURFACES TO RECEIVE PAINT FINISH APPLY INT.4-B: LATEX FINISH, PREMIUM GRADE, SATIN FINISH. EGG SHELL FINISH TO ALL DOORS AND DOOR FRAMES.

FOR ELECTRICAL AND SIMILAR EQUIPMENT BACKBOARDS, APPLY INT.1-J: FIRE RETARDANT PAINT, ACCEPTABLE TO THE AUTHORITIES HAVING JURISDICTION, APPLIED IN STRICT ACCORDANCE WITH THE MANUFACTURER'S INSTRUCTIONS.

EPOXY FLOORING:

SUBJECT TO COMPLIANCE WITH OTHER SPECIFICATION REQUIREMENTS, SELECT LOW-ODOUR, NON-CARCINOGENIC PRODUCTS IN ALL LOCATIONS FOR WHICH SUCH PRODUCTS ARE AVAILABLE. CONFORM TO MANUFACTURER'S RECOMMENDED TEMPERATURES, RELATIVE HUMIDITY, AND SUBSTRATE MOISTURE CONTENT FOR APPLICATION AND CURING OF GROUT INCLUDING SPECIAL CONDITIONS GOVERNING USE.

MANUFACTURER QUALIFICATIONS: MINIMUM 5 YEAR EXPERIENCE MANUFACTURING SIMILAR PRODUCTS. INSTALLER QUALIFICATIONS: MINIMUM 2 YEAR EXPERIENCE INSTALLING SIMILAR PRODUCTS

COLOUR TO MATCH EXISTING FLOOR COLOUR. PROVIDE MOCK-UP FOR EVALUATION OF SURFACE PREPARATION TECHNIQUES AND APPLICATION WORKMANSHIP BY ARCHITECT PRIOR TO COMMENCEMENT OF THE WORK.

GYPSUM BOARD:

UNDERWRITERS' LABORATORIES CANADA (ULC): DESIGN REQUIREMENTS FOR FIRE RESISTANT ASSEMBLIES. ENVIRONMENTAL CONDITIONS, GENERAL: ESTABLISH AND MAINTAIN ENVIRONMENTAL CONDITIONS FOR APPLYING AND FINISHING GYPSUM BOARD TO COMPLY WITH ASTM C840 REQUIREMENTS OR GYPSUM BOARD MANUFACTURER'S RECOMMENDATIONS, WHICHEVER ARE MORE STRINGENT.

ANCHORS AND FASTENERS: ANCHORS AND FASTENER OF TYPES SUITABLE FOR THE APPLICATIONS INDICATED, FABRICATED FROM CORROSION-RESISTANT MATERIALS, WITH CLIPS OR OTHER ACCESSORY DEVICES FOR ATTACHING HANGERS, AND WITH THE CAPABILITY TO SUSTAIN, WITHOUT FAILURE AND WITH A SAFETY FACTOR ACCEPTABLE TO THE AUTHORITIES HAVING JURISDICTION, THE LOAD IMPOSED BY CEILING CONSTRUCTION AND ITEMS SUPPORTED BY THE CEILING.

STEEL STUDS FOR FURRING CHANNELS: ASTM C645, 0.45 MM BASE METAL THICKNESS, UNLESS OTHERWISE INDICATED OR REQUIRED BY LOADING CONDITIONS. DEPTH AS INDICATED AND AS REQUIRED BY LOADING CONDITIONS.

GENERAL: PROVIDE GYPSUM BOARD OF TYPES INDICATED IN MAXIMUM LENGTHS AVAILABLE THAT WILL MINIMIZE END-TO-END BUTT JOINTS IN EACH AREA INDICATED TO RECEIVE GYPSUM BOARD APPLICATION, THICKNESSES AS INDICATED. GYPSUM BOARD TO ASTM C36. STANDARD GYPSUM BOARD UNLESS OTHERWISE INDICATED.

ACCESSORIES FOR INTERIOR INSTALLATION: CORNERBEAD, EDGE TRIM, AND CONTROL JOINTS COMPLYING WITH ASTM C1047. PROVIDE JOINT TREATMENT MATERIALS COMPLYING WITH ASTM C475 AND THE RECOMMENDATIONS OF BOTH THE MANUFACTURERS OF SHEET PRODUCTS AND OF JOINT TREATMENT MATERIALS FOR EACH APPLICATION INDICATED.

EXAMINE THE ARCHITECTURAL DRAWINGS AND COORDINATE WITH APPROPRIATE OTHER TRADES TO ESTABLISH OPENINGS, ADDITIONAL SUPPORT AND OTHER SPECIAL PROVISIONS REQUIRED FOR ITEMS BUILT INTO OR PARTIALLY SUPPORTED BY THE WORK OF THIS SECTION.

STRUCTURAL STEEL:

ALL STRUCTURAL STEEL SHALL CONFORM TO CSA G40.20-04 AND CSA G40.21-04, GRADE 350W

WELDING MATERIALS SHALL CONFORM TO CSA W48.06.

WELDING SHALL BE CARRIED OUT BY WELDERS QUALIFIED BY THE CANADIAN WELDING BUREAU.

WELDING SHALL CONFORM TO CSA W59-03.

ALL STRUCTURAL STEEL SHALL RECEIVE ONE SHOP COAT OF PRIMER CONFORMING TO CAN/CSB 1-40-97, 'ANTI-CORROSIVE STRUCTURAL STEEL ALKYD PRIMER'.

THE STRUCTURAL STEEL FABRICATOR SHALL SUBMIT SHOP DRAWINGS FOR REVIEW BASED ON SITE DIMENSIONS.

ALL STRUCTURAL STEEL WORK SHALL CONFORM TO CSA S16.01.

ELEVATOR:

INSTALLATION OF ENTRANCE FRAME TO CONFORM TO ENTRANCE FRAME INSTALLATION GUIDE SUPPLIED BY ELEVATOR SUPPLIER. THE ELEVATOR SUPPLIER SHALL SUBMIT SHOP DRAWINGS FOR REVIEW BASED ON SITE DIMENSIONS.

ELEVATOR SIGNAGE:

DIMENSIONS OF SIGNAGE PLAQUE, FONT TYPE AND TEXT SIZE TO MATCH BASE BUILDING STANDARD. INCLUDE SIGNAGE DETAILING AS PART OF ELEVATOR SHOP DRAWINGS.

SEISMIC RESTRAINT:

THE CONTRACTOR SHALL PROVIDE PRE-ENGINEERED SEISMIC RESTRAINT SYSTEMS TO MEET TOTAL DESIGN LATERAL FORCE REQUIREMENTS FOR SUPPORT AND RESTRAINT OF ELEVATOR, CEILING GRID SYSTEM, MECHANICAL AND ELECTRICAL COMPONENTS AND OTHER ASSOCIATED EQUIPMENT IN ACCORDANCE WITH THE LATEST NATIONAL BUILDING CODE REQUIREMENTS.

IN CASE OF AMBIGUITY BETWEEN THE ENGLISH VERSION AND THE FRENCH VERSION OF THE PLANS AND SPECIFICATIONS, THE ENGLISH VERSION PREVAILS.



GENERAL NOTES

- CONTRACTOR TO VERIFY ALL DIMENSIONS AND CLEARANCES ON SITE PRIOR TO CONSTRUCTION AND REPORT ANY DISCREPANCIES AND/OR OMISSIONS TO DEPARTMENTAL REPRESENTATIVE.
- CONTRACTOR MUST VISIT THE SITE AND FULLY FAMILIARIZE THEMSELV WITH THE SCOPE OF THE WORK PRIOR TO PROJECT COMMENCEMENT.
- ALL TRADES TO COORDINATE WORK ON SITE, WITH APPROVAL OF DEPARTMENTAL REPRESENTATIVE TO AVOID ANY CONFLICTS AND/OR INTERFERENCE.
- ANY AND ALL REQUIRED SHUTDOWNS SHALL BE COORDINATED WITH DEPARTMENTAL REPRESENTATIVE.
- INSTALLATION OF ALL SYSTEMS SHALL BE IN ACCORDANCE WITH APPLICABLE CODES AND STANDARDS.
- CONTRACTOR TO BE RESPONSIBLE FOR REINSTATEMENT AND REPAIR OF ANY DAMAGE CAUSED BY WORK.
- CONTRACTOR SHALL PREVENT THE SPREAD OF DUST AND DEBRIS BEYOND AREA OF WORK AND CLEAN ALL SURFACES AT COMPLETION.

stamp estampille stamp estampille

ALCAIDE
WEBSTER
ARCHITECTS INC
202 - 1320 CARLING AVENUE
OTTAWA, ON K1Z 7K8 www.owb-arcb.ca

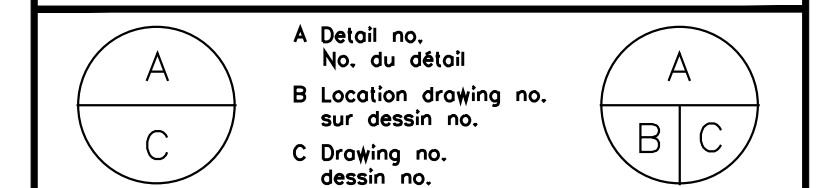
ARCHITECTURE PLANNING
DESIGN BUILD PROJECT MANAGEMENT

KEY PLAN PLAN CLÉ

No.	Date	Revision	By: Par:
4	21/02/2020	ISSUED FOR TENDER	By: MH Par: MH
3	20/12/2019	ISSUED FOR 99% REVIEW	By: MH Par: MH
2	12/11/2019	ISSUED FOR 66% REVIEW	By: MH Par: MH
1	22/10/2019	ISSUED FOR REVIEW	By: MH Par: MH

Date Printed

- Verify all dimensions and site conditions and be responsible for same
- Vérifier toutes les dimensions et l'état des lieux et en assumer la responsabilité



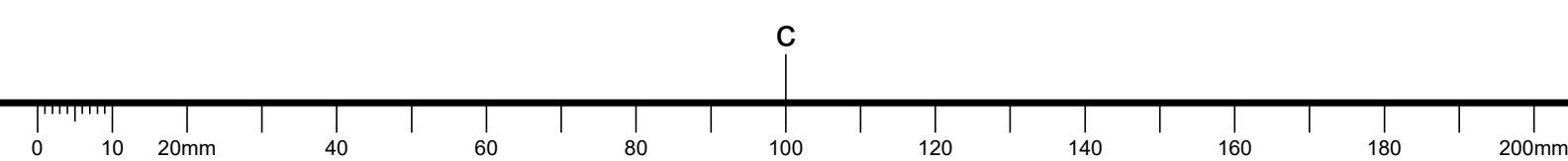
project projet

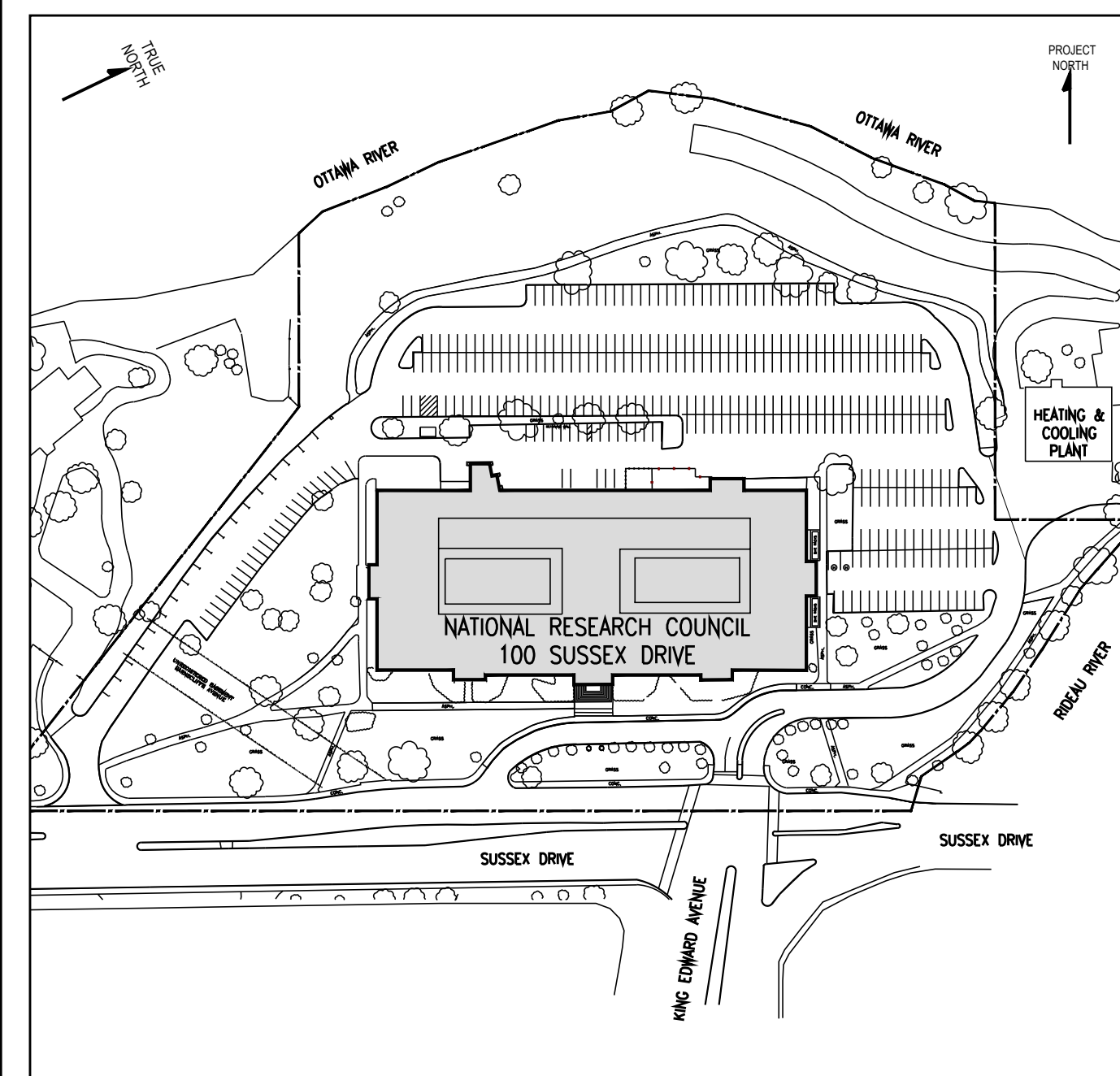
FREIGHT ELEVATOR 'C'
REPLACEMENT
100 SUSSEX

drawing dessin

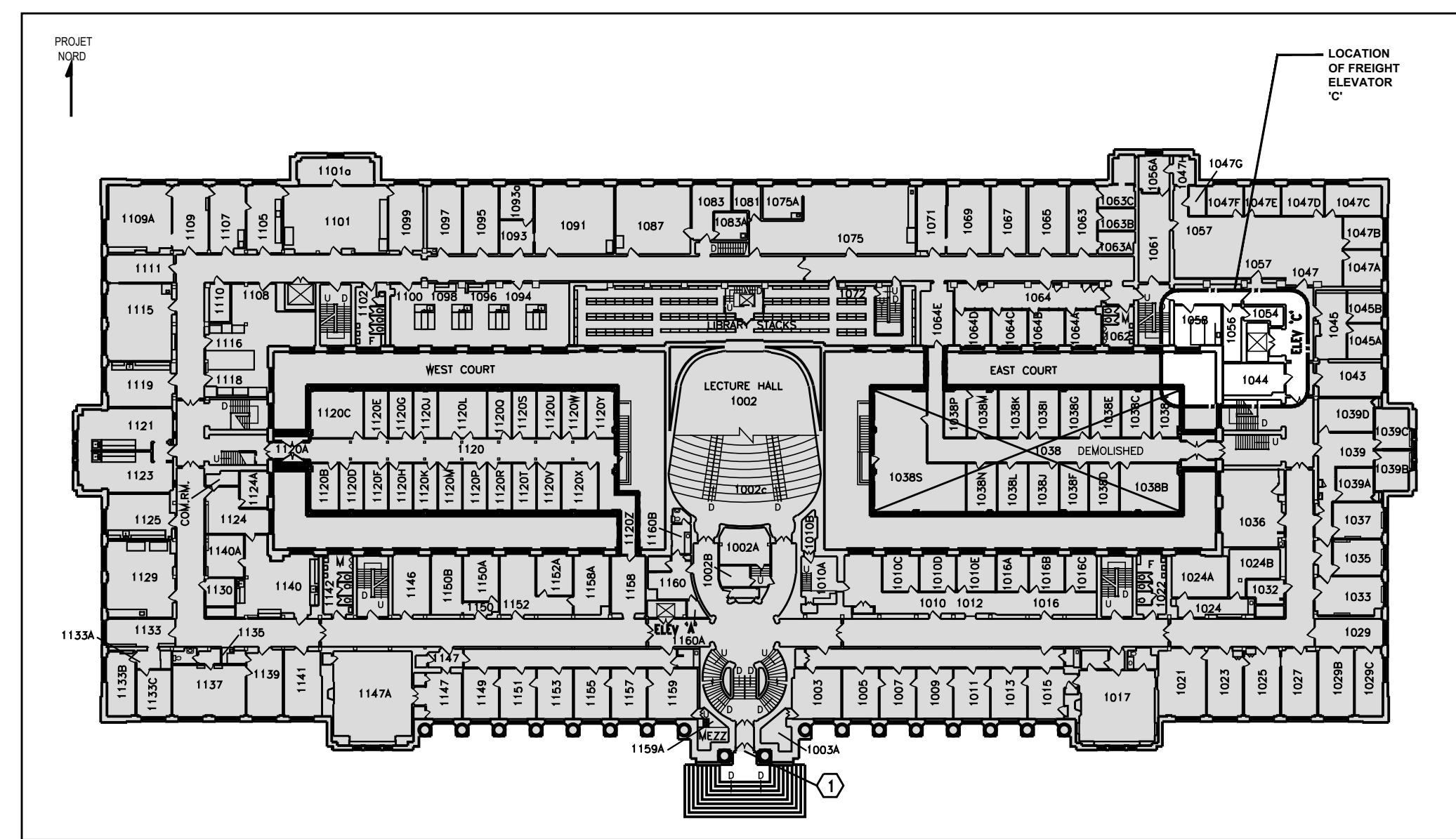
SPECIFICATIONS

designed	conçu	date	date
VA/MH		02/21/2020	
drown	dessiné	scale	échelle
MH		AS NOTED	
checked	vérifié	sheet	feuille
VA		of/de	
approved	approuvé	W.O.no.	D.T.no.
VA			
dwg.no.	5813-A0		dessin no.
ACAD file:			fichier CDAO:

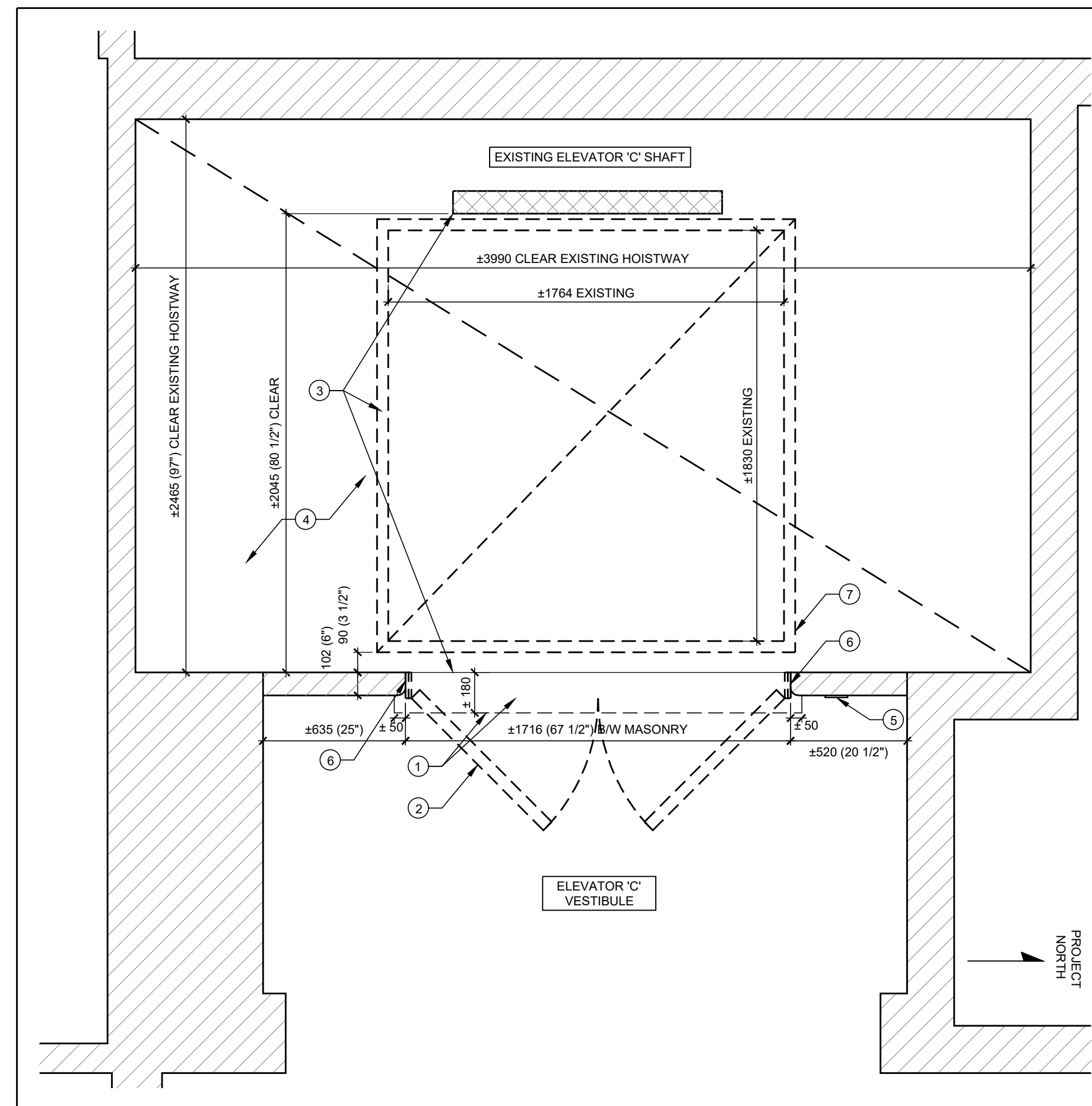




1 CONTEXT PLAN
SCALE NTS



2 LOCATION PLAN – TYPICAL FLOOR
SCALE NTS



- ELEVATOR 'C' - DEMOLITION DRAWING NOTES:**
- 1) A) EXISTING DOOR THRESHOLD TO BE REMOVED.
B) REMOVE EXISTING TERRACOTTA BLOCK & PLASTER FINISH BUT LIMITED TO WHAT IS MINIMALLY REQUIRED TO RECEIVE NEW ELEVATOR DOOR ENTRANCE FRAME SILL AND EMBEDDED STEEL L-ANGLE.
C) REMOVE FLOOR SLAB IN FRONT OF ELEVATOR, FOR THE FULL WIDTH OF DOOR OPENING, AND WITH A WIDTH OF APPROXIMATELY 185mm FROM THE EDGE OF THE ELEVATOR SHAFT OPENING. SITE CONFIRM ON EACH FLOOR PRIOR TO REMOVAL. COORDINATE WITH ELEVATOR SHOP DRAWINGS.
D) LIMIT REMOVAL OF FLOOR SLAB SO THAT REMAINING PORTION OF SLAB IS CONTINUOUSLY SUPPORTED ON EXISTING JOIST BELOW.
E) IF EMBEDDED STEEL STRUCTURE IS FOUND DURING DEMOLITION THAT IS INCONGRUENT WITH WHAT IS SHOWN ON DRAWINGS, CONTRACTOR TO NOTIFY ARCHITECT.
F) CONFIRM DEPTH OF AREA REQUIRED TO BE REMOVED WITH ELEVATOR SHOP DRAWINGS PRIOR TO DEMOLITION.
 - 2) REMOVE EXISTING ELEVATOR METAL ENTRANCE DOORS, DOOR FRAME, AND HEADER FRAMING AS REQUIRED TO ACCOMMODATE NEW ELEVATOR ENTRANCE FRAME. CONTRACTOR TO RETURN DOORS TO NRC FOR STORAGE. RETAIN EXISTING FRAMES & ENSURE NO DAMAGE TO REMAINING TERRACOTTA SURROUND. REFER TO ELEVATOR SHOP DRAWINGS FOR SIZING.
 - 3) EXISTING ELEVATOR CAR TO BE REMOVED IN PREPARATION FOR NEW ELEVATOR CAR WITH REVISED CLEAR DIMENSIONS B/W CAR PLATFORM AND SILL PLATE PROJECTION. REFER TO ELEVATOR SPECIFICATIONS.
 - 4) EXISTING ELEVATOR SHAFT FROM GROUND TO 3RD FLOOR - SEE ELEVATOR SPECIFICATIONS FOR EXTENT OF REMOVAL OF EXISTING HOISTWAY CONTROLLERS.
 - 5) EXISTING ELEVATOR CONTROL PANEL TO BE REMOVED. PREPARE OPENING IN WALL TO RECEIVE NEW CONTROL PANEL SO THAT CENTERLINE OF PANEL IS IN COMPLIANCE WITH BARRIER-FREE HEIGHT REQUIREMENTS. SITE VERIFY EXISTING LOCATION AND SUBMIT SHOP DRAWINGS FOR REVIEW.
 - 6) CLEAN AND MAKE GOOD EXISTING MASONRY WALL FACE AROUND FULL PERIMETER OF REMAINING DOOR OPENING IN PREPARATION FOR INSTALLATION OF NEW ELEVATOR ENTRANCE FRAME.
 - 7) SITE MEASURE CRITICAL PINPOINTS WHEN REMOVING ALL ASSEMBLY PARTS AND COORDINATE WITH EXISTING CONDITIONS.

3 TYP. FLOOR PLAN (GROUND, 1ST, 2ND, AND 3RD FLOOR – DEMOLITION)
SCALE 1:20

GENERAL NOTES

- CONTRACTOR TO VERIFY ALL DIMENSIONS AND CLEARANCES ON SITE PRIOR TO CONSTRUCTION AND REPORT ANY DISCREPANCIES AND/OR OMISSIONS TO DEPARTMENTAL REPRESENTATIVE.
- CONTRACTOR MUST VISIT THE SITE AND FULLY FAMILIARIZE THEMSELVES WITH THE SCOPE OF THE WORK PRIOR TO PROJECT COMMENCEMENT.
- ALL TRADES TO COORDINATE WORK ON SITE, WITH APPROVAL OF DEPARTMENTAL REPRESENTATIVE TO AVOID ANY CONFLICTS AND/OR INTERFERENCE.
- ANY AND ALL REQUIRED SHUTDOWNS SHALL BE COORDINATED WITH DEPARTMENTAL REPRESENTATIVE.
- INSTALLATION OF ALL SYSTEMS SHALL BE IN ACCORDANCE WITH APPLICABLE CODES AND STANDARDS.
- CONTRACTOR TO BE RESPONSIBLE FOR REINSTATEMENT AND REPAIR OF ANY DAMAGE CAUSED BY WORK.
- CONTRACTOR SHALL PREVENT THE SPREAD OF DUST AND DEBRIS BEYOND AREA OF WORK AND CLEAN ALL SURFACES AT COMPLETION.

stamp	estampille	stamp	estampille
-------	------------	-------	------------

ALCAIDE WEBSTER ARCHITECTS INC.
202 - 1320 CARLING AVENUE
OTTAWA, ON K1Z 7X8 www.oww-arcb.ca
ARCHITECTURE PLANNING
DESIGN BUILD PROJECT MANAGEMENT

KEY PLAN / PLAN CLÉ

No.	Date	Revision	By: / Par:
4	21/02/2020	ISSUED FOR TENDER	By: MH / Par: MH
3	20/12/2019	ISSUED FOR 99% REVIEW	By: MH / Par: MH
2	12/11/2019	ISSUED FOR 66% REVIEW	By: MH / Par: MH
1	22/10/2019	ISSUED FOR REVIEW	By: MH / Par: MH

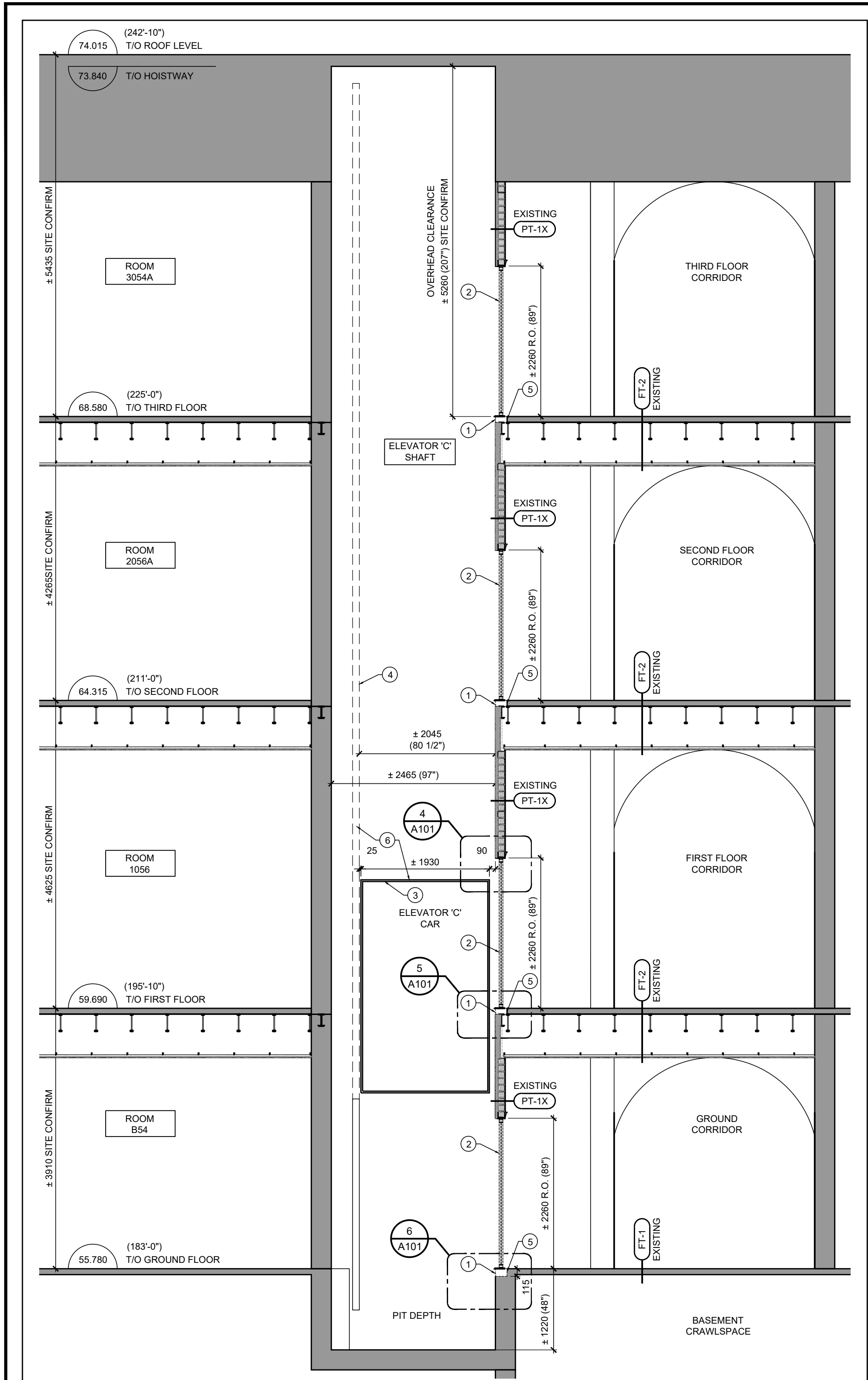
Date Printed
o Verify all dimensions and site conditions and be responsible for same
o Vérifier toutes les dimensions et l'état des lieux et en assumer la responsabilité

A	A Detail no. / No. du détail	A
B	B Location drawing no. / sur dessin no.	B
C	C Drawing no. / dessin no.	C

project / projet
FREIGHT ELEVATOR 'C' REPLACEMENT
100 SUSSEX

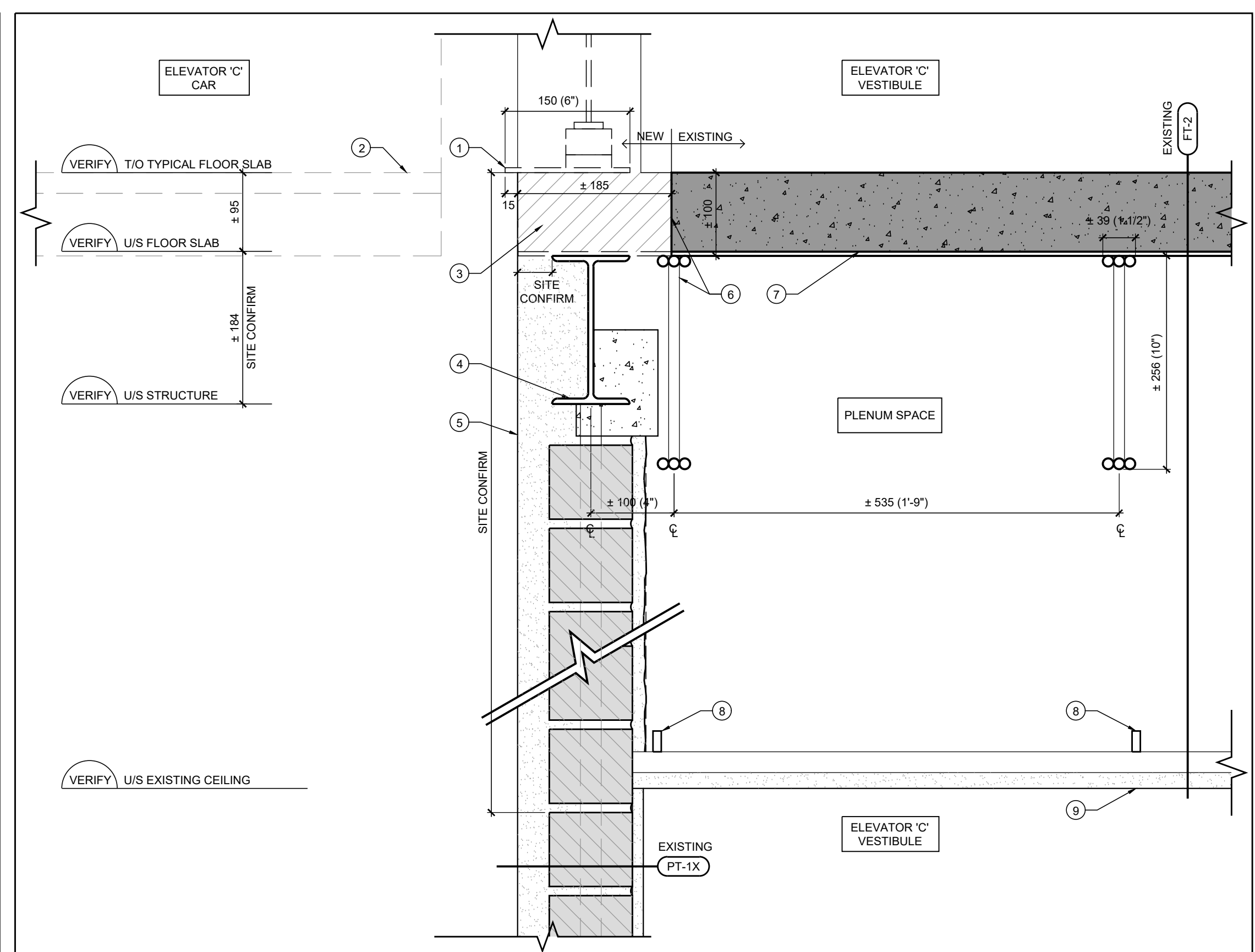
CONTEXT PLAN, DEMOLITION PLAN

designed / conçu	date	date
VA/MH	02/21/2020	
drawn / dessiné	scale / échelle	
MH	AS NOTED	
checked / vérifié	sheet / feuille	of / de
VA		
approved / approuvé	W.O.no.	D.T.no.
VA		
dwg.no. / dessin no.	5813-A00	
ACAD file: / fichier CDAO:		

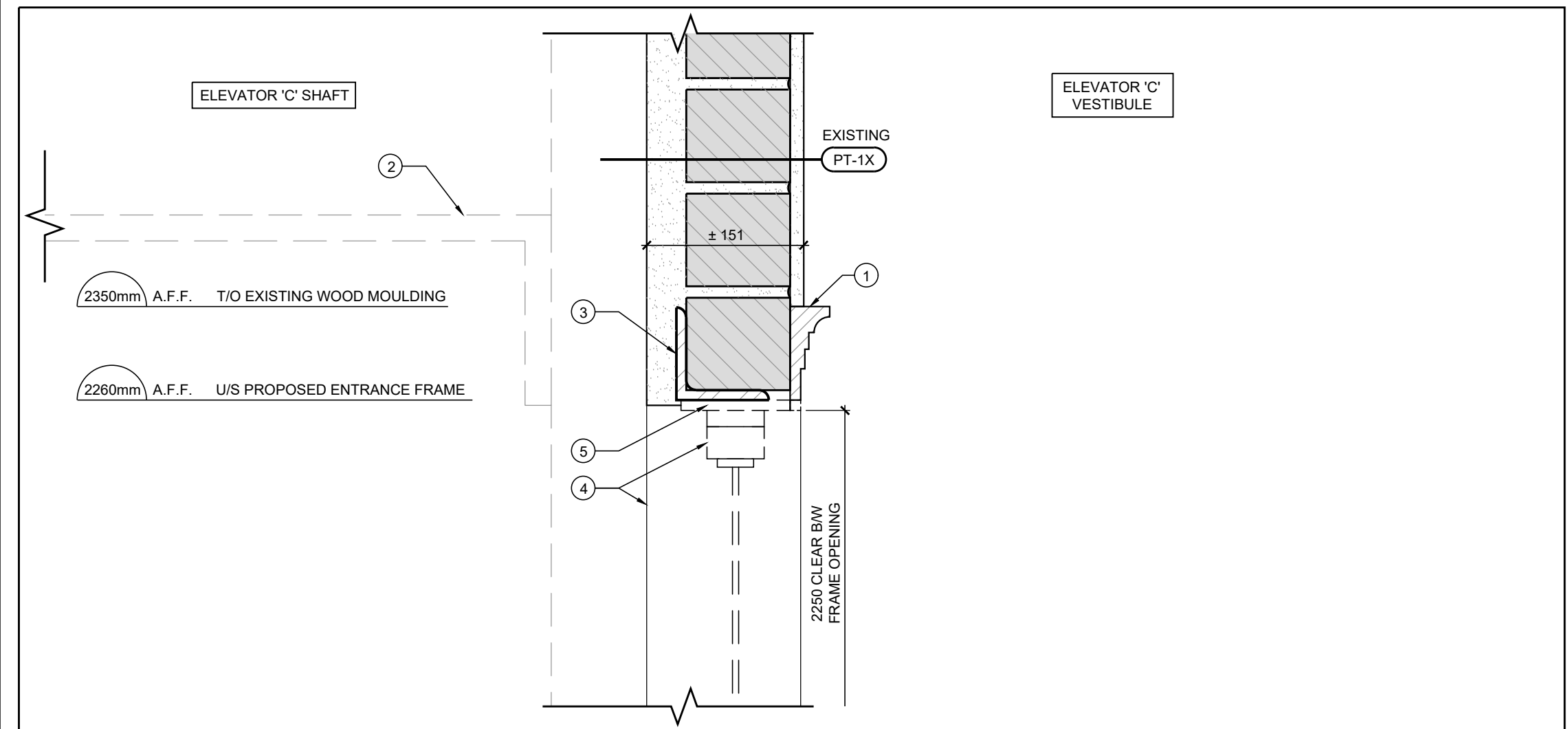


1 PARTIAL BUILDING SECTION - ELEVATOR DEMOLITION
SCALE 1:50

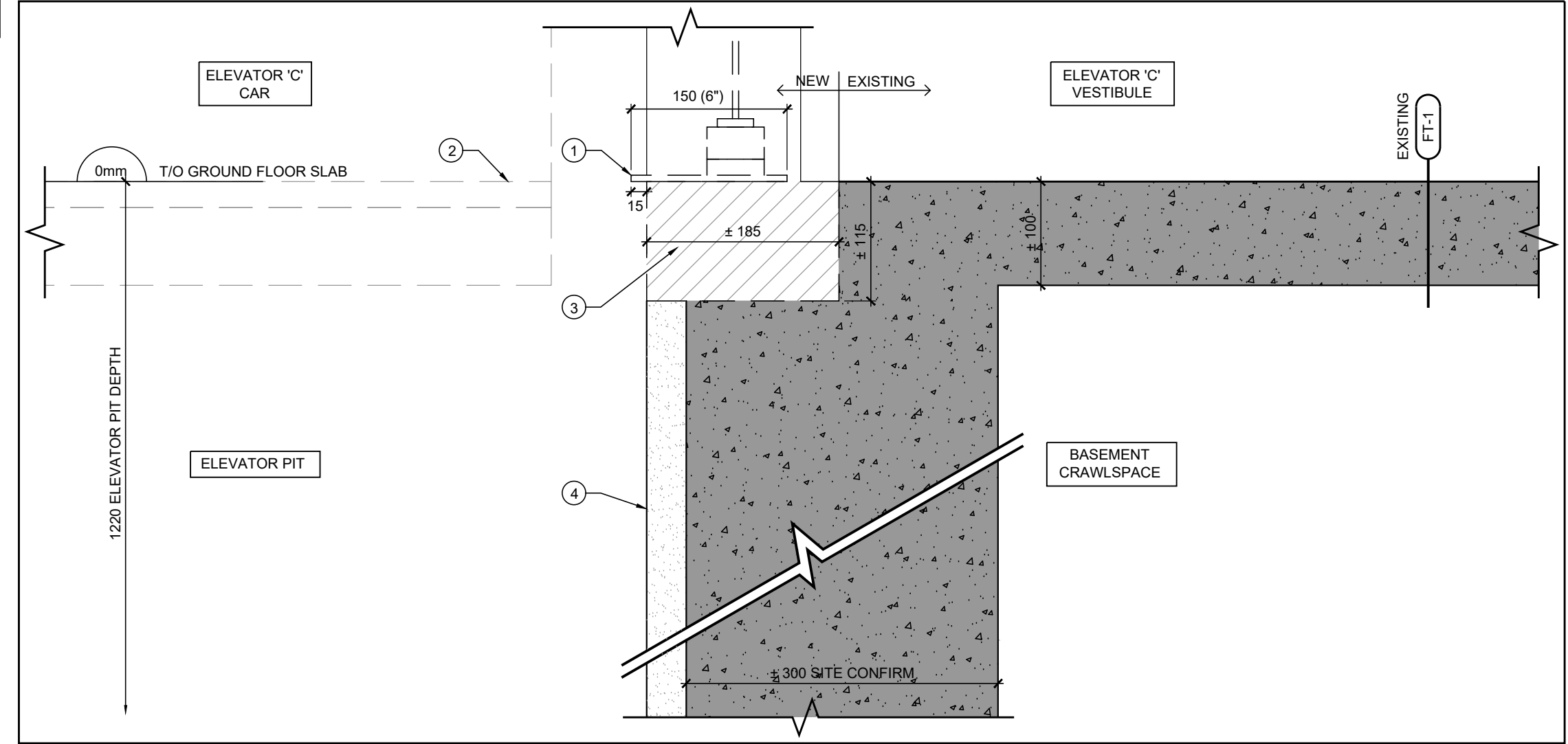
- ELEVATOR 'C' - DEMOLITION DRAWING NOTES:**
- EXISTING DOOR THRESHOLD TO BE REMOVED.
 - REMOVE EXISTING TERRACOTTA BLOCK & PLASTER FINISH BUT LIMITED TO WHAT IS MINIMALLY REQUIRED TO RECEIVE NEW ELEVATOR DOOR ENTRANCE FRAME SILL AND EMBEDDED STEEL L-ANGLE.
 - REMOVE FLOOR SLAB IN FRONT OF ELEVATOR, FOR THE FULL WIDTH OF DOOR OPENING, AND WITH A WIDTH OF APPROXIMATELY 185mm FROM THE EDGE OF THE ELEVATOR SHAFT OPENING. SITE CONFIRM ON EACH FLOOR PRIOR TO REMOVAL. COORDINATE WITH ELEVATOR SHOP DRAWINGS.
 - LIMIT REMOVAL OF FLOOR SLAB SO THAT REMAINING PORTION OF SLAB IS CONTINUOUSLY SUPPORTED ON EXISTING JOIST BELOW.
 - IF EMBEDDED STEEL STRUCTURE IS FOUND DURING DEMOLITION THAT IS INCONGRUENT WITH WHAT IS SHOWN ON DRAWINGS, CONTRACTOR TO NOTIFY ARCHITECT.
 - CONFIRM DEPTH OF AREA REQUIRED TO BE REMOVED WITH ELEVATOR SHOP DRAWINGS PRIOR TO DEMOLITION.
 - EXISTING ELEVATOR DOORS TO BE REMOVED. CONTRACTOR TO RETURN DOORS TO NRC FOR STORAGE. RETAIN EXISTING FRAMES & ENSURE NO DAMAGE TO REMAINING TERRACOTTA SURROUND.
 - EXISTING ELEVATOR CAR TO BE REMOVED IN PREPARATION FOR NEW ELEVATOR CAR WITH REVISED CLEAR DIMENSIONS B/W CAR PLATFORM AND SILL PLATE PROJECTION. REFER TO ELEVATOR SPECIFICATIONS.
 - EXISTING ELEVATOR SHAFT FROM GROUND TO 3RD FLOOR - SEE ELEVATOR SPECIFICATIONS FOR EXTENT OF REMOVAL OF EXISTING HOISTWAY CONTROLLERS.
 - EXISTING 255MM (10") DEEP BENT METAL OPEN WEB JOISTS TO REMAIN. ENSURE REMAINING EDGE OF FLOOR SLAB IS FULLY SUPPORTED ON EXISTING JOIST.
 - SITE MEASURE CRITICAL PINCHPOINTS WHEN REMOVING ALL ASSEMBLY PARTS AND COORDINATE WITH EXISTING CONDITIONS.



2 ELEVATOR 'C' - TYP. ELEVATOR SILL - DEMOLITION DETAIL
SCALE 1:5



3 ELEVATOR 'C' - TYP. ELEVATOR HEADER DETAIL - DEMOLITION
SCALE 1:5



4 ELEVATOR 'C' - GROUND ELEVATOR SILL - DEMOLITION DETAIL
SCALE 1:5

- ELEVATOR 'C' - TYPICAL DEMOLITION DRAWING NOTES:**
- EXISTING 6" WIDE STEEL PLATE TO BE REMOVED.
 - EXISTING ELEVATOR CAR TO BE REMOVED IN PREPARATION FOR NEW ELEVATOR CAR. REFER TO NEW CONSTRUCTION DRAWINGS.
 - REMOVE EXISTING TERRACOTTA BLOCK & PLASTER FINISH BUT LIMITED TO WHAT IS MINIMALLY REQUIRED TO RECEIVE NEW ELEVATOR DOOR ENTRANCE FRAME SILL AND EMBEDDED STEEL L-ANGLE.
 - REMOVE FLOOR SLAB IN FRONT OF ELEVATOR, FOR THE FULL WIDTH OF DOOR OPENING, AND WITH A WIDTH OF APPROXIMATELY 185mm FROM THE EDGE OF THE ELEVATOR SHAFT OPENING. SITE CONFIRM ON EACH FLOOR PRIOR TO REMOVAL. COORDINATE WITH ELEVATOR SHOP DRAWINGS.
 - LIMIT REMOVAL OF FLOOR SLAB SO THAT REMAINING PORTION OF SLAB IS CONTINUOUSLY SUPPORTED ON EXISTING JOIST BELOW.
 - IF EMBEDDED STEEL STRUCTURE IS FOUND DURING DEMOLITION THAT IS INCONGRUENT WITH WHAT IS SHOWN ON DRAWINGS, CONTRACTOR TO NOTIFY ARCHITECT.
 - CONFIRM DEPTH OF AREA REQUIRED TO BE REMOVED WITH ELEVATOR SHOP DRAWINGS PRIOR TO DEMOLITION.
 - EXISTING STRUCTURAL BEAM EMBEDDED W7x15.3 WITHIN FLOOR SLAB TO REMAIN.
 - LINE OF PLASTER FINISH OF EXISTING ELEVATOR SHAFT WALL TO REMAIN.
 - EXISTING 255mm (10") DEEP BENT METAL OPEN WEB JOISTS TO REMAIN. ENSURE REMAINING EDGE OF FLOOR SLAB IS FULLY SUPPORTED ON EXISTING JOIST.
 - EXISTING CORRUGATED METAL PAN TO REMAIN.
 - EXISTING METAL CHANNEL RAILS SUPPORTING SUSPENDED FLAT / BARRELED LATHE AND PLASTER CEILING BELOW TO REMAIN.
 - EXISTING LATHE / PLASTER CEILING TO REMAIN. (BARRELED ON GROUND FLOOR).

- ELEVATOR 'C' - DEMOLITION DRAWING NOTES:**
- SITE CONFIRM HEIGHT OF AREA OF EXISTING WOOD MOULDING REQUIRED TO BE REMOVED AS REQUIRED TO INSTALL ELEVATOR FRAME. PROVIDE MINIMAL DISRUPTION TO EXISTING MOULDING AND HEADER FRAMING FOR AESTHETIC INTEGRITY AFTER ENTRANCE FRAME IS IN PLACE.
 - EXISTING ELEVATOR CAR TO BE REMOVED IN PREPARATION FOR NEW ELEVATOR CAR WITH REVISED CLEAR DIMENSIONS B/W CAR PLATFORM AND SILL PLATE PROJECTION. REFER TO ELEVATOR SPECIFICATIONS.
 - EXISTING MASONRY SUPPORT LINTEL, 3 1/2" x 3 1/2" x 3/8" TO REMAIN. CONFIRM U/S CLEARANCE TO ENSURE ADEQUATE SPACE IS AVAILABLE TO ACCOMMODATE NEW ENTRANCE FRAME.
 - REMOVE EXISTING ELEVATOR METAL ENTRANCE DOORS, DOOR FRAME, AND HEADER FRAMING AS REQUIRED TO ACCOMMODATE NEW ELEVATOR ENTRANCE FRAME. CONTRACTOR TO RETURN DOORS TO NRC FOR STORAGE. RETAIN EXISTING FRAMES & ENSURE NO DAMAGE TO REMAINING TERRACOTTA SURROUND. REFER TO ELEVATOR SHOP DRAWINGS FOR SIZING.
 - CLEAN AND MAKE GOOD EXISTING MASONRY WALL FACE AROUND FULL PERIMETER OF REMAINING DOOR OPENING IN PREPARATION FOR INSTALLATION OF NEW ELEVATOR ENTRANCE FRAME.

- ELEVATOR 'C' - GROUND FLOOR DEMOLITION DRAWING NOTES:**
- EXISTING 6" WIDE STEEL PLATE TO BE REMOVED.
 - EXISTING ELEVATOR CAR TO BE REMOVED IN PREPARATION FOR NEW ELEVATOR CAR. REFER TO NEW CONSTRUCTION DRAWINGS.
 - REMOVE FLOOR SLAB IN FRONT OF ELEVATOR, FOR THE FULL WIDTH OF DOOR OPENING, AND WITH A WIDTH OF APPROXIMATELY 185mm FROM THE EDGE OF THE ELEVATOR SHAFT OPENING. SITE CONFIRM ON EACH FLOOR PRIOR TO REMOVAL. COORDINATE WITH ELEVATOR SHOP DRAWINGS.
 - IF EMBEDDED STEEL STRUCTURE IS FOUND DURING DEMOLITION THAT IS INCONGRUENT WITH WHAT IS SHOWN ON DRAWINGS, CONTRACTOR TO NOTIFY ARCHITECT.
 - CONFIRM DEPTH OF AREA REQUIRED TO BE REMOVED WITH ELEVATOR SHOP DRAWINGS PRIOR TO DEMOLITION.
 - LINE OF PLASTER FINISH OF EXISTING ELEVATOR SHAFT WALL TO REMAIN.

- GENERAL NOTES**
- CONTRACTOR TO VERIFY ALL DIMENSIONS AND CLEARANCES ON SITE PRIOR TO CONSTRUCTION AND REPORT ANY DISCREPANCIES AND/OR OMISSIONS TO DEPARTMENTAL REPRESENTATIVE.
 - CONTRACTOR MUST VISIT THE SITE AND FULLY FAMILIARIZE THEMSELVES WITH THE SCOPE OF THE WORK PRIOR TO PROJECT COMMENCEMENT.
 - ALL TRADES TO COORDINATE WORK ON SITE, WITH APPROVAL OF DEPARTMENTAL REPRESENTATIVE TO AVOID ANY CONFLICTS AND/OR INTERFERENCE.
 - ANY AND ALL REQUIRED SHUTDOWNS SHALL BE COORDINATED WITH DEPARTMENTAL REPRESENTATIVE.
 - INSTALLATION OF ALL SYSTEMS SHALL BE IN ACCORDANCE WITH APPLICABLE CODES AND STANDARDS.
 - CONTRACTOR TO BE RESPONSIBLE FOR REINSTATEMENT AND REPAIR OF ANY DAMAGE CAUSED BY WORK.
 - CONTRACTOR SHALL PREVENT THE SPREAD OF DUST AND DEBRIS BEYOND AREA OF WORK AND CLEAN ALL SURFACES AT COMPLETION.

stamp	estampille	stamp	estampille
-------	------------	-------	------------

ALCAIDE WEBSTER ARCHITECTS INC
202 - 1320 CARLING AVENUE
Ottawa, ON K1Z 7K8 www.owal-arcb.ca

ARCHITECTURE PLANNING
DESIGN BUILD PROJECT MANAGEMENT

KEY PLAN		PLAN CLÉ	
----------	--	----------	--

No.	Date	Revision	By:	For:
4	21/02/2020	ISSUED FOR TENDER	MH	MH
3	20/12/2019	ISSUED FOR 99% REVIEW	MH	MH
2	12/11/2019	ISSUED FOR 66% REVIEW	MH	MH
1	22/10/2019	ISSUED FOR REVIEW	MH	MH

Date Printed

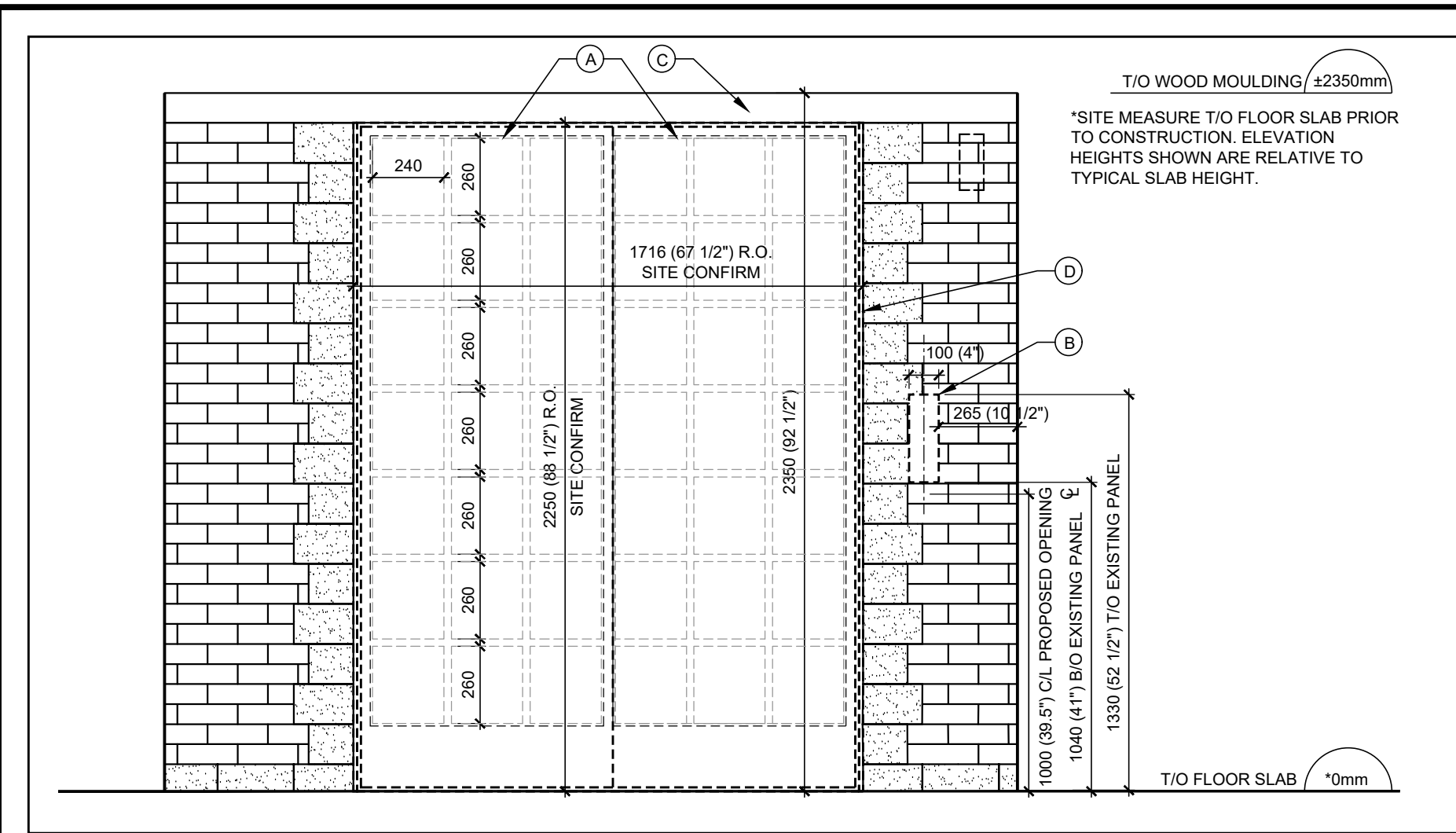
o Verify all dimensions and site conditions and be responsible for same
o Vérifier toutes les dimensions et l'état des lieux et en assumer la responsabilité

A	Detail no.	A
B	No. du détail	B
C	Location drawing no. sur dessin no.	C
	Drawing no. dessin no.	

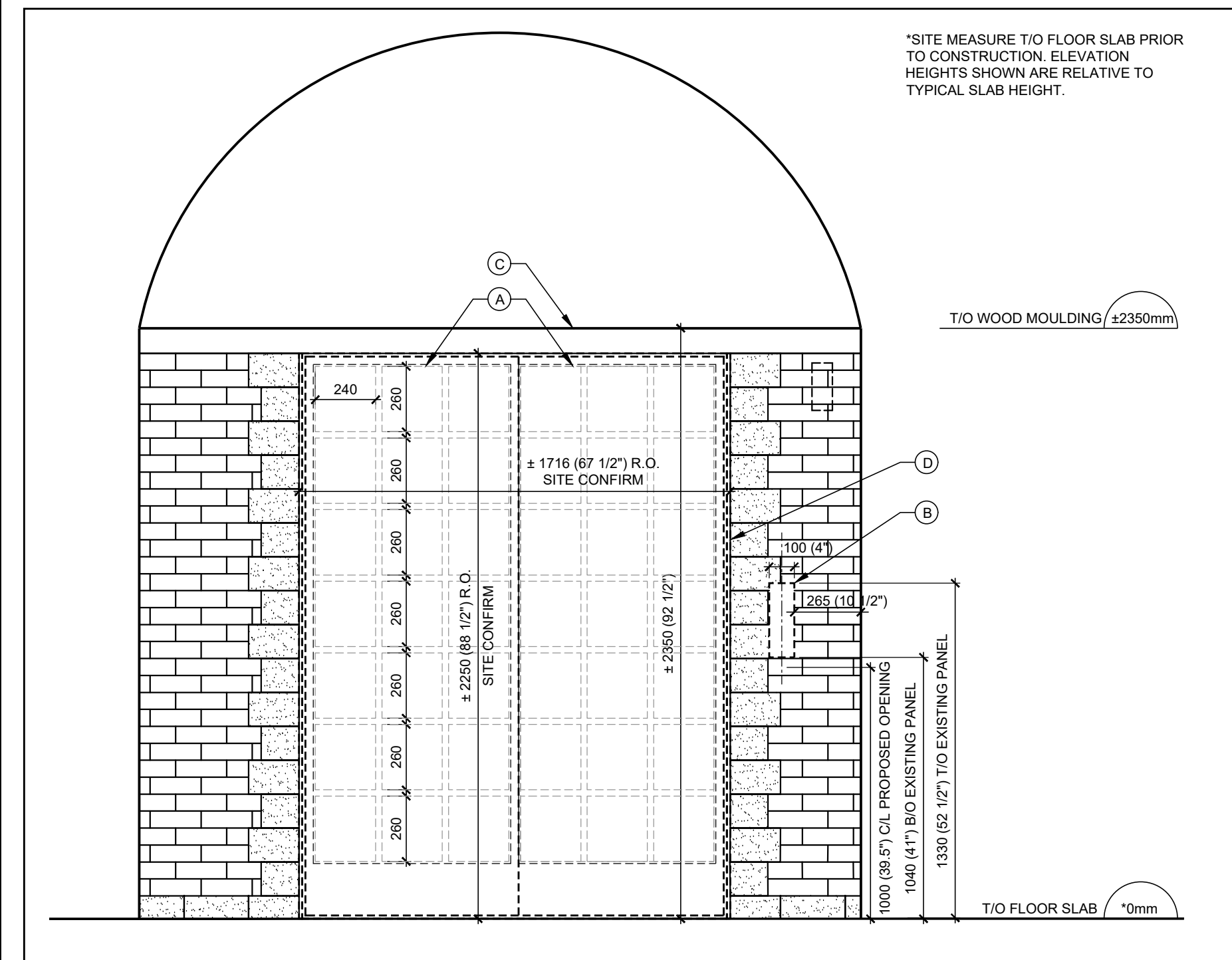
project / projet

FREIGHT ELEVATOR 'C' REPLACEMENT
100 SUSSEX

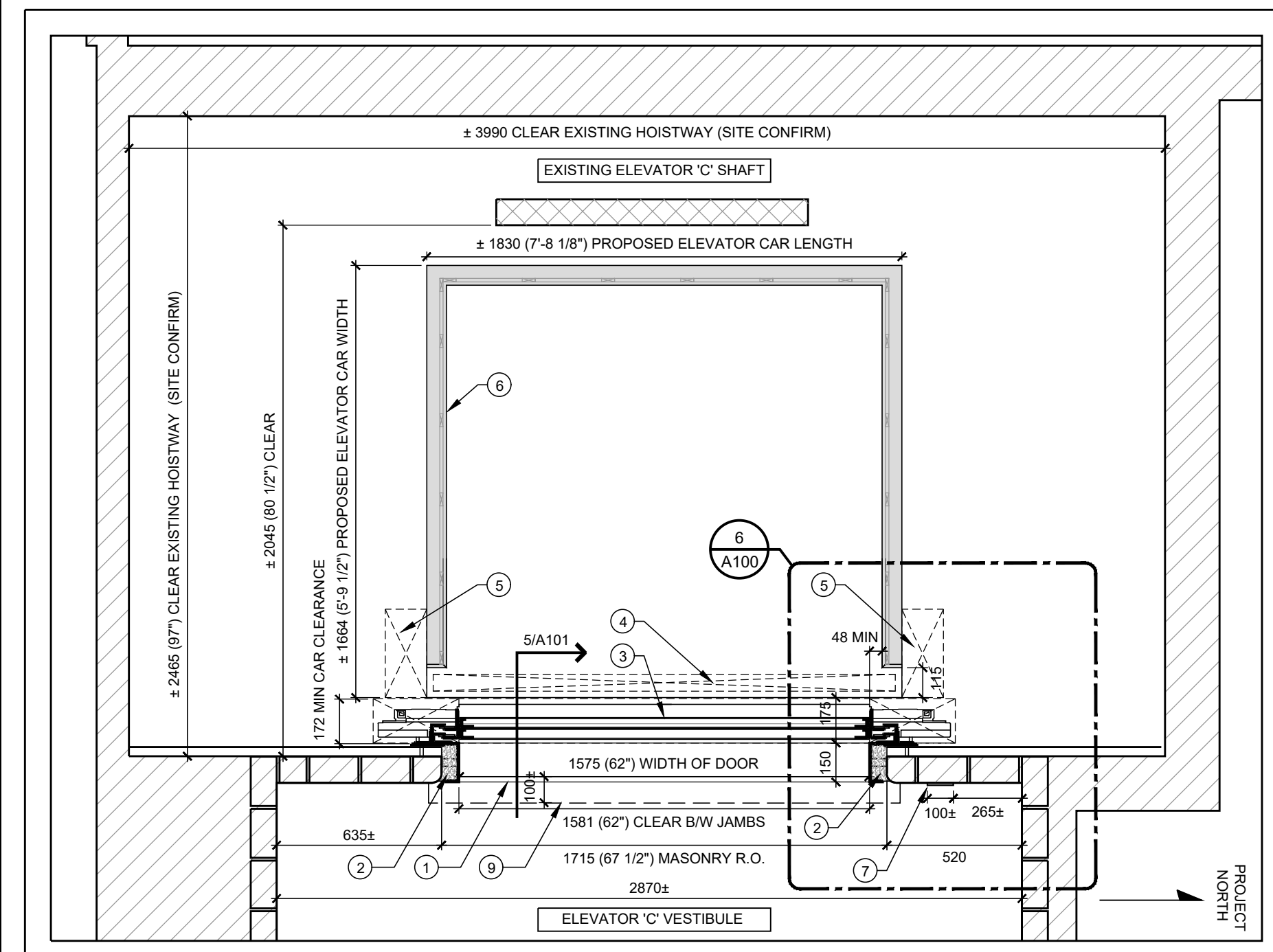
DEMOLITION SECTIONS			
designed	conçu	date	date
VA/MH		02/21/2020	
drawn	dessiné	scale	échelle
MH		AS NOTED	
checked	vérifié	sheet	feuille
VA		of/de	
approved	approuvé	W.O.no.	D.T.no.
VA			
dwg.no.	5813-A050		dessin no.
ACAD file:			fichier CDAO:



1 FIRST / SECOND / THIRD FLOOR ELEVATION - DEMOLITION
SCALE 1:20



2 GROUND FLOOR ELEVATION - DEMOLITION
SCALE 1:20



3 TYP. ELEVATOR 'C' FLOOR PLAN - NEW WORK
SCALE 1:20

ELEVATOR 'C' INTERIOR ELEVATIONS - DEMOLITION DRAWING NOTES:

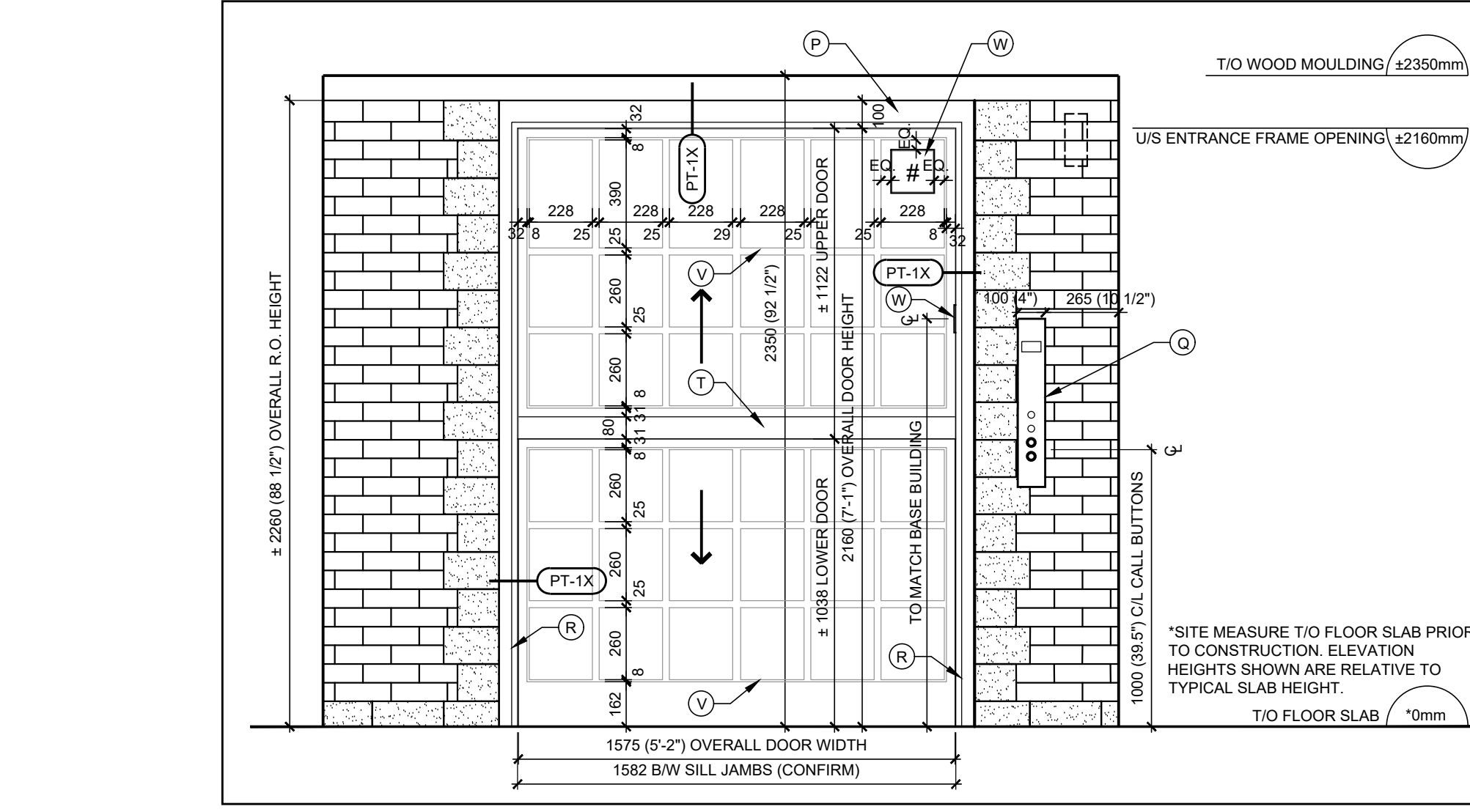
- (A) EXISTING ELEVATOR DOORS TO BE REMOVED. CONTRACTOR TO RETURN DOORS TO NRC FOR STORAGE. RETAIN EXISTING FRAMES & ENSURE NO DAMAGE TO REMAINING TERRACOTTA SURROUND
- (B) EXISTING ELEVATOR CONTROL PANEL TO BE REMOVED. PREPARE OPENING IN WALL TO RECEIVE NEW CONTROL PANEL SO THAT CENTERLINE OF NEW PANEL CALL BUTTONS ARE APPROXIMATELY 1070mm A.F.F. IN COMPLIANCE WITH BARRIER-FREE HEIGHT REQUIREMENTS. SITE VERIFY EXISTING LOCATION AND SUBMIT SHOP DRAWINGS FOR REVIEW.
- (C) SITE CONFIRM HEIGHT OF AREA OF EXISTING WOOD MOULDING REQUIRED TO BE REMOVED AS REQUIRED TO INSTALL ELEVATOR FRAME. PROVIDE MINIMAL DISRUPTION TO EXISTING MOULDING AND HEADER FRAMING FOR AESTHETIC INTEGRITY AFTER ENTRANCE FRAME IS IN PLACE.
- (D) CLEAN AND MAKE GOOD EXISTING MASONRY WALL FACE AROUND FULL PERIMETER OF REMAINING DOOR OPENING IN PREPARATION FOR INSTALLATION OF NEW ELEVATOR ENTRANCE FRAME.

ELEVATOR 'C' INTERIOR ELEVATIONS - NEW CONSTRUCTION DRAWING NOTES:

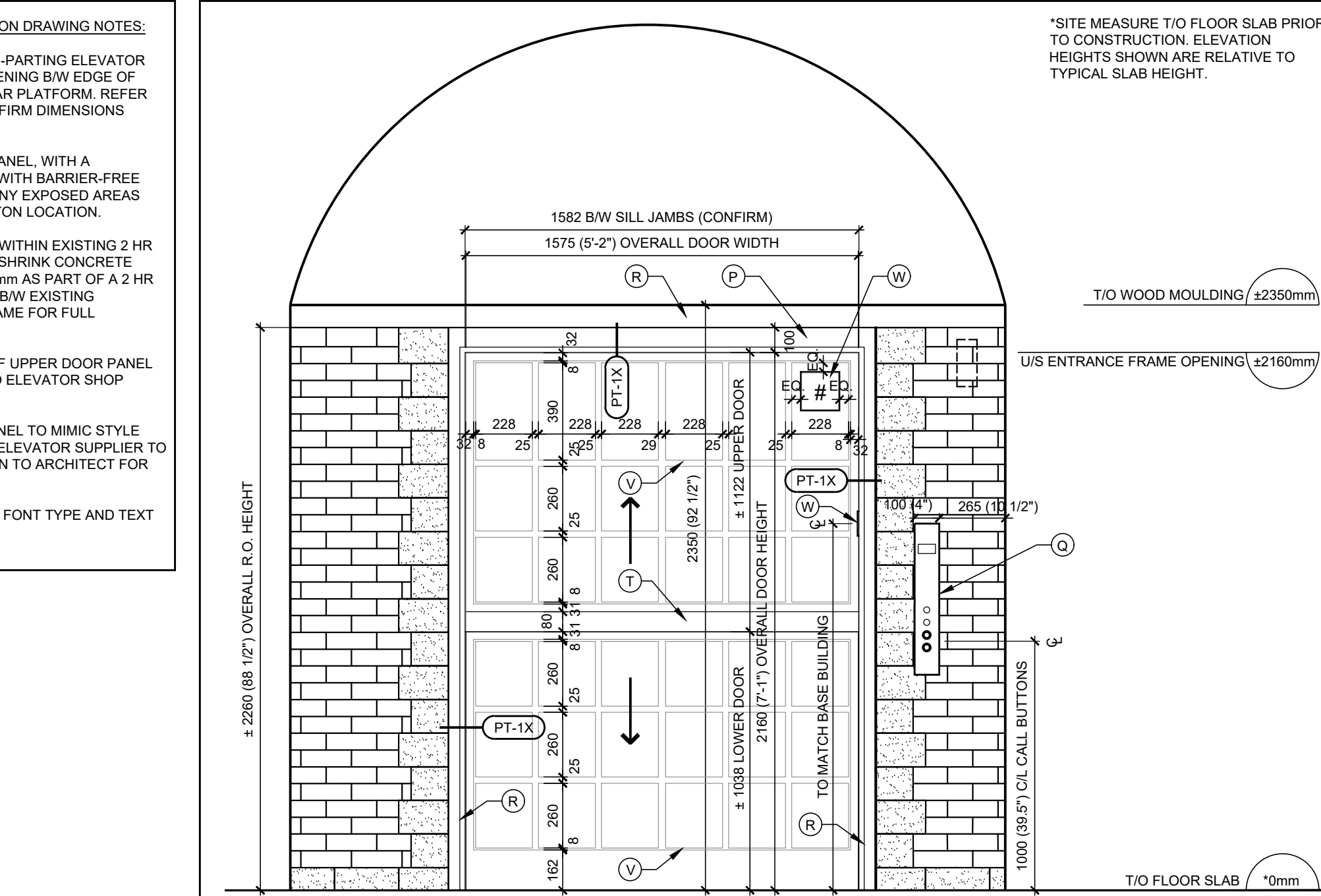
- (P) NEW 1575 X 2160mm (5'-2" x 7'-1") VERTICALLY BI-PARTING ELEVATOR PASS DOORS. ALLOW 172mm (6 3/4") CLEAR OPENING B/W EDGE OF SILL PLATE AND FRONT EDGE OF ELEVATOR CAR PLATFORM. REFER TO ELEVATOR DOOR SHOP DRAWINGS TO CONFIRM DIMENSIONS AND FOR INSTALLATION PROCEDURE.
- (Q) NEW STAINLESS STEEL ELEVATOR CONTROL PANEL, WITH A CENTERLINE @ 1000mm A.F.F. IN COMPLIANCE WITH BARRIER-FREE HEIGHT REQUIREMENTS. PATCH AND REPAIR ANY EXPOSED AREAS REMAINING FROM PRIOR ELEVATOR CALL BUTTON LOCATION.
- (R) NEW 1.5 HR MIN. FRR ELEVATOR DOOR FRAME WITHIN EXISTING 2 HR FRR ELEVATOR SHAFT. FILL CAVITY WITH NON-SHRINK CONCRETE (TYPE N) FOR FULL DEPTH OF FRAME. MIN. 150mm AS PART OF A 2 HR FRR WALL AROUND PERIMETER OF OPENING B/W EXISTING MASONRY AND NEW ELEVATOR ENTRANCE FRAME FOR FULL THICKNESS OF WALL ASSEMBLY.
- (T) APPROXIMATELY 80mm THICK RUBBER BASE OF UPPER DOOR PANEL OF BI-PARTING PASS DOOR SYSTEM. REFER TO ELEVATOR SHOP DRAWINGS FOR DETAILS.
- (V) CUSTOM DETAILING OF UPPER AND LOWER PANEL TO MIMIC STYLE AND SHAPE OF TYPICAL NRC BUILDING DOOR. ELEVATOR SUPPLIER TO SUBMIT ELEVATOR SHOP DRAWINGS OF DESIGN TO ARCHITECT FOR APPROVAL PRIOR TO MANUFACTURING.
- (W) PROPOSED LOCATION OF ELEVATOR SIGNAGE. FONT TYPE AND TEXT SIZE TO MATCH BASE BUILDING STANDARD.

ELEVATOR 'C' PLAN - NEW CONSTRUCTION DRAWING NOTES:

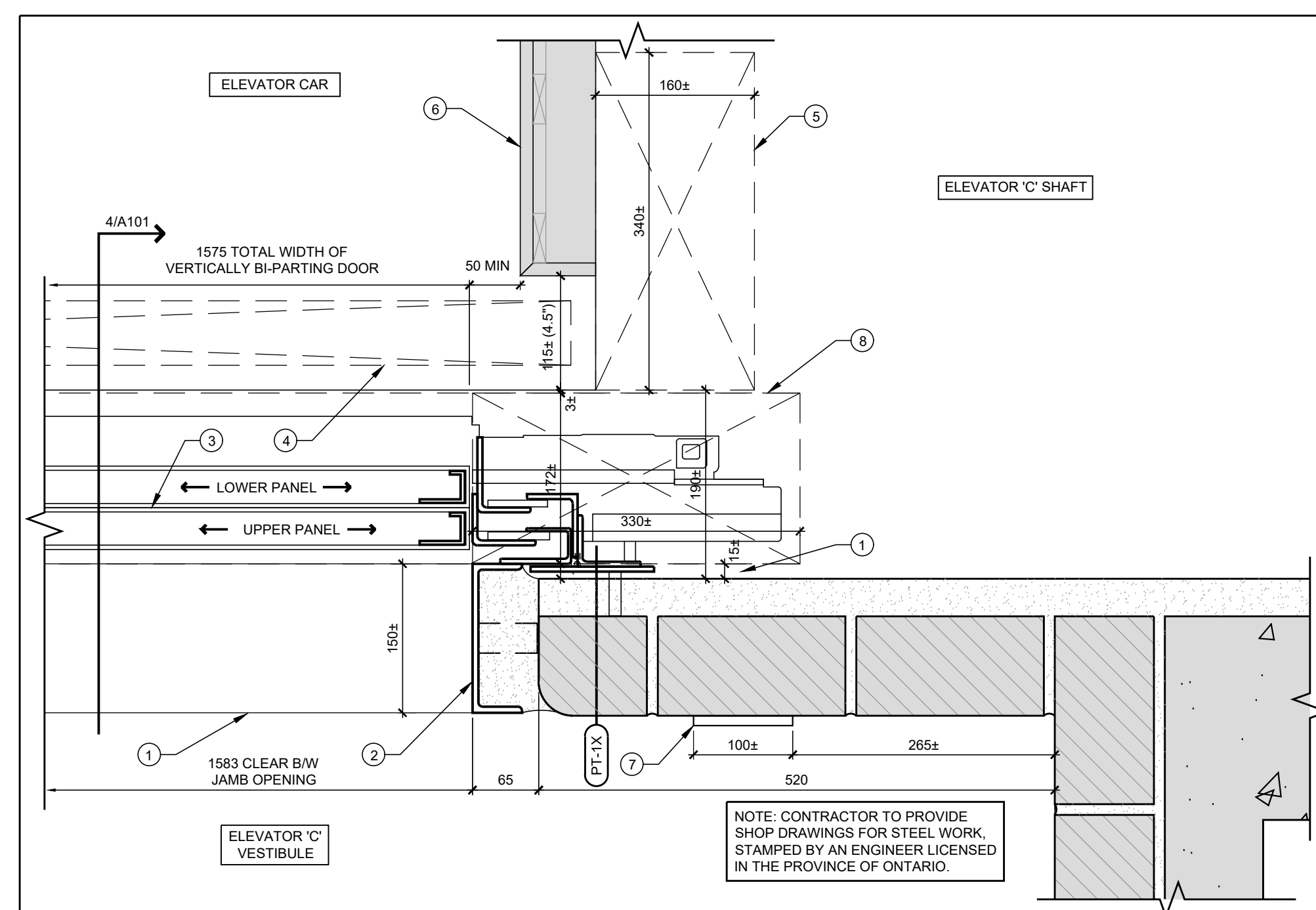
- 1 NEW SILL PLATE AND SILL ANGLE AS PART OF ELEVATOR ENTRANCE FRAMING. BLACK FINISH. LIMIT ENCROACHMENT INTO HOISTWAY TO NO GREATER THAN 15mm. ALIGN ENTRANCE FRAME AND SILL PLATES ON ALL FLOORS SO THAT EDGE OF ALL PROJECTIONS ARE VERTICALLY EQUAL AND PLUMB PRIOR TO INSTALLING VERTICAL ELEVATOR DOOR SUPPORTS. REFER TO ELEVATOR SHOP DRAWINGS FOR INSTALLATION PROCEDURE.
- 2 NEW 1.5 HR MIN. FRR ELEVATOR DOOR FRAME WITHIN EXISTING 2 HR FRR ELEVATOR SHAFT. FILL CAVITY WITH NON-SHRINK CONCRETE (TYPE N) FOR FULL DEPTH OF FRAME. MIN. 150mm AS PART OF A 2 HR FRR WALL AROUND PERIMETER OF OPENING B/W EXISTING MASONRY AND NEW ELEVATOR ENTRANCE FRAME.
- 3 NEW 1575 X 2160mm (5'-2" x 7'-1") VERTICALLY BI-PARTING ELEVATOR PASS DOORS. ALLOW 172mm (6 3/4") CLEAR OPENING B/W EDGE OF SILL PLATE AND FRONT EDGE OF ELEVATOR CAR PLATFORM. REFER TO ELEVATOR DOOR SHOP DRAWINGS FOR INSTALLATION GUIDE.
- 4 PROVIDE APPROXIMATELY 115mm CLEARANCE B/W INTERIOR CAR WALL AND EDGE OF CAR PLATFORM TO ACCOMMODATE VERTICALLY HOISTED ELEVATOR CAR GATE. COORDINATE WITH ELEVATOR SHOP DRAWINGS FOR REQUIRED OVERHEAD CLEARANCE NEEDED ABOVE SINGLE PASS CAR GATE.
- 5 DESIGNATED AREA FOR ELEVATOR GATE COUNTERWEIGHT AND CONTACT EQUIPMENT. COORDINATE WITH WHAT IS OUTLINED ON ELEVATOR SHOP DRAWINGS.
- 6 NEW ELEVATOR CAR. ENSURE MINIMUM CLEARANCES ARE MAINTAINED IN FRONT OF CAR TO ACCOMMODATE NEW ELEVATOR PASS DOORS AND CAR GATE. COORDINATE WITH LIMITS OF EXISTING ELEVATOR SHAFT DIMENSIONS AND ELEVATOR SHOP DRAWINGS.
- 7 NEW STAINLESS STEEL ELEVATOR CONTROL PANEL, WITH A CENTERLINE @ 1000mm A.F.F. IN COMPLIANCE WITH BARRIER-FREE HEIGHT REQUIREMENTS. PATCH AND REPAIR ANY EXPOSED AREAS REMAINING FROM PRIOR ELEVATOR CALL BUTTON LOCATION. INSTALL BRICK CLADDING. REUSED FROM BUILDING SUPPLY OR NEW WITH COLOUR TO MATCH EXISTING AS REQUIRED TO PATCH WALLS AROUND PREVIOUS ELEVATOR BUTTON LOCATIONS.
- 8 DESIGNATED AREA FOR ELEVATOR EQUIPMENT. COORDINATE WITH WHAT IS OUTLINED ON ELEVATOR SHOP DRAWINGS.
- 9 APPROXIMATE OUTLINE OF INFILL CONCRETE SLAB AROUND EMBEDDED ELEVATOR ENTRANCE SILL ANCHORS. ONCE SILL PLATE AND EMBED ANCHORS ARE IN PLACE, INFILL AREA WITH POURED CONCRETE GROUT WITH A SMOOTH FINISH THAT MATCHES T/O EXISTING FLOOR SLAB. FINISH EXPOSED FLOOR SURFACE IN FRONT OF SILL PLATE WITH EPOXY PAINT, COLOUR TO MATCH EXISTING.



4 TYPICAL ELEVATOR 'C' (1ST / 2ND / 3RD) - INTERIOR ELEVATION
SCALE 1:20



5 GROUND FLOOR ELEVATOR 'C' - INTERIOR ELEVATION
SCALE 1:20



6 2HR RATED INFILL WALL @ ELEVATOR 'C' DOOR
SCALE 1:5



GENERAL NOTES

- CONTRACTOR TO VERIFY ALL DIMENSIONS AND CLEARANCES ON SITE PRIOR TO CONSTRUCTION AND REPORT ANY DISCREPANCIES AND/OR OMISSIONS TO DEPARTMENTAL REPRESENTATIVE.
- CONTRACTOR MUST VISIT THE SITE AND FULLY FAMILIARIZE THEMSELVES WITH THE SCOPE OF THE WORK PRIOR TO PROJECT COMMENCEMENT.
- ALL TRADES TO COORDINATE WORK ON SITE, WITH APPROVAL OF DEPARTMENTAL REPRESENTATIVE TO AVOID ANY CONFLICTS AND/OR INTERFERENCE.
- ANY AND ALL REQUIRED SHUTDOWNS SHALL BE COORDINATED WITH DEPARTMENTAL REPRESENTATIVE.
- INSTALLATION OF ALL SYSTEMS SHALL BE IN ACCORDANCE WITH APPLICABLE CODES AND STANDARDS.
- CONTRACTOR TO BE RESPONSIBLE FOR REINSTATEMENT AND REPAIR OF ANY DAMAGE CAUSED BY WORK.
- CONTRACTOR SHALL PREVENT THE SPREAD OF DUST AND DEBRIS BEYOND AREA OF WORK AND CLEAN ALL SURFACES AT COMPLETION.

stamp estampille stamp estampille

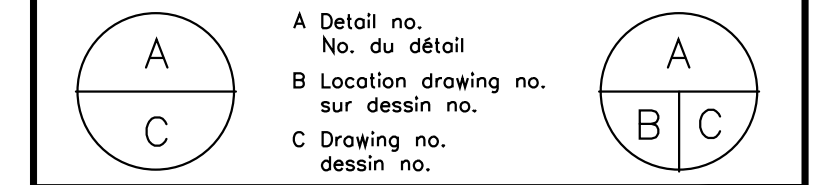
ALCAIDE WEBSTER ARCHITECTS INC.
202 - 1320 CARLING AVENUE
OTTAWA, ON K1Z 7K8 www.awa-crch.ca
ARCHITECTURE PLANNING DESIGN BUILD PROJECT MANAGEMENT

KEY PLAN PLAN CLÉ

No.	Date	Revision	By:	For:
4	21/02/2020	ISSUED FOR TENDER	MH	MH
3	20/12/2019	ISSUED FOR 99% REVIEW	MH	MH
2	12/11/2019	ISSUED FOR 66% REVIEW	MH	MH
1	22/10/2019	ISSUED FOR REVIEW	MH	MH

Date Printed

- o Verify all dimensions and site conditions and be responsible for same
- o Vérifier toutes les dimensions et l'état des lieux et en assumer la responsabilité



project projet

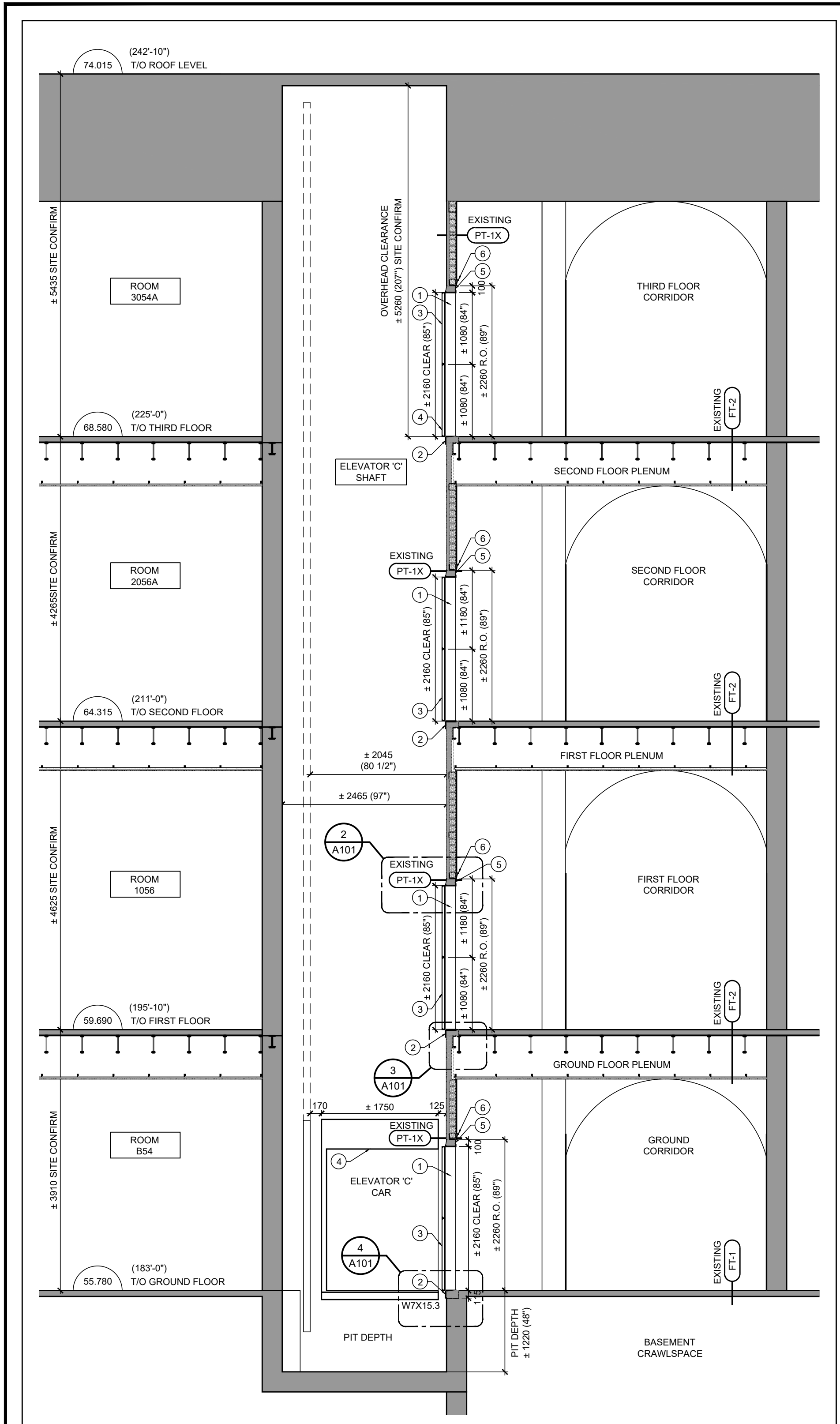
FREIGHT ELEVATOR 'C' REPLACEMENT
100 SUSSEX

drawing dessin

NEW CONSTRUCTION - PLAN DETAILS, INTERIOR ELEVATIONS

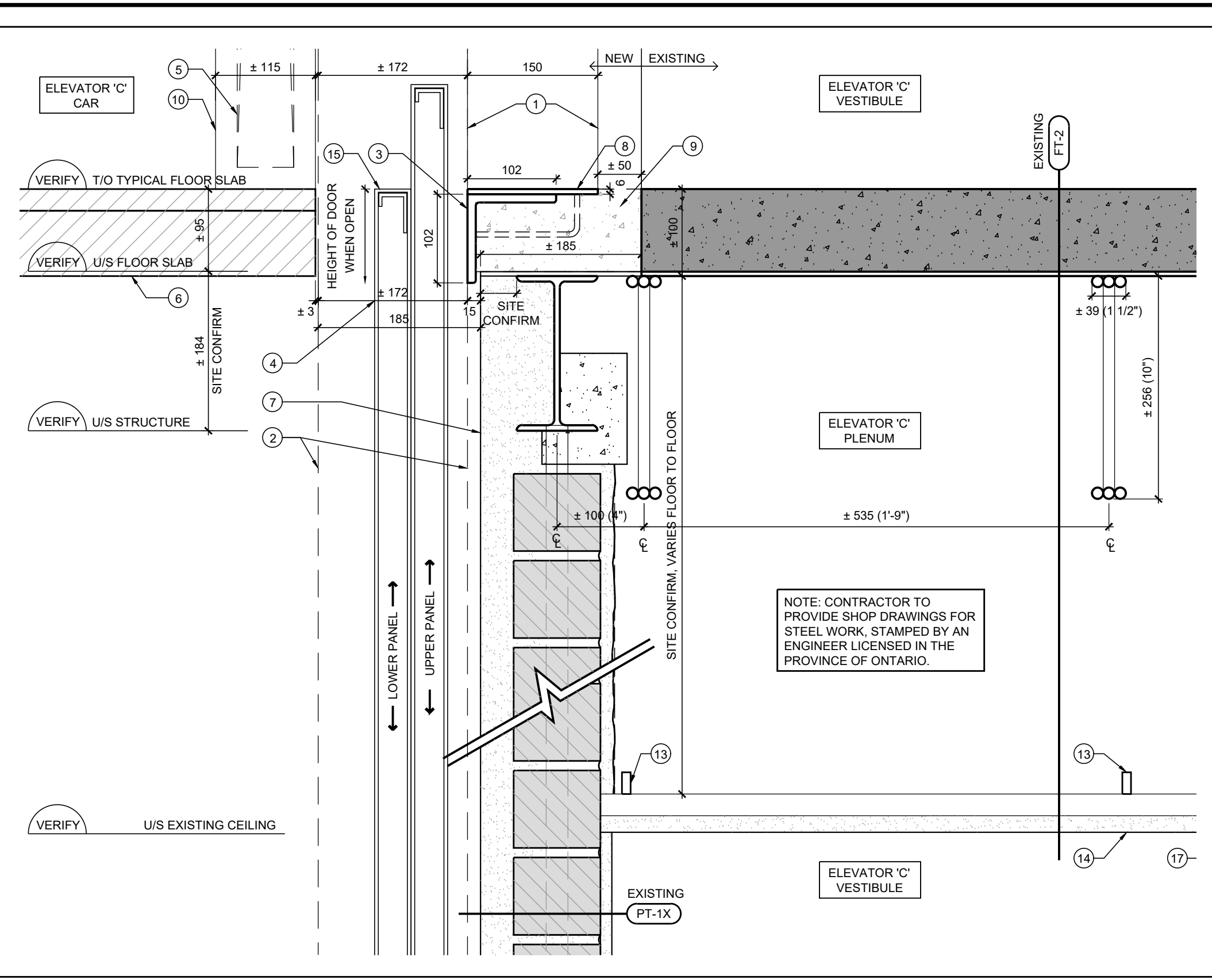
designed	conçu	date	date
VA/MH		02/21/2020	
drawn	dessiné	scale	échelle
MH		AS NOTED	
checked	vérifié	sheet	feuille
VA		c/d/de	
approved	approuvé	W.O.no.	D.T.no.
VA			

dwg.no. **5813-A100** dessin no.
ACAD file: fichier CDAO:

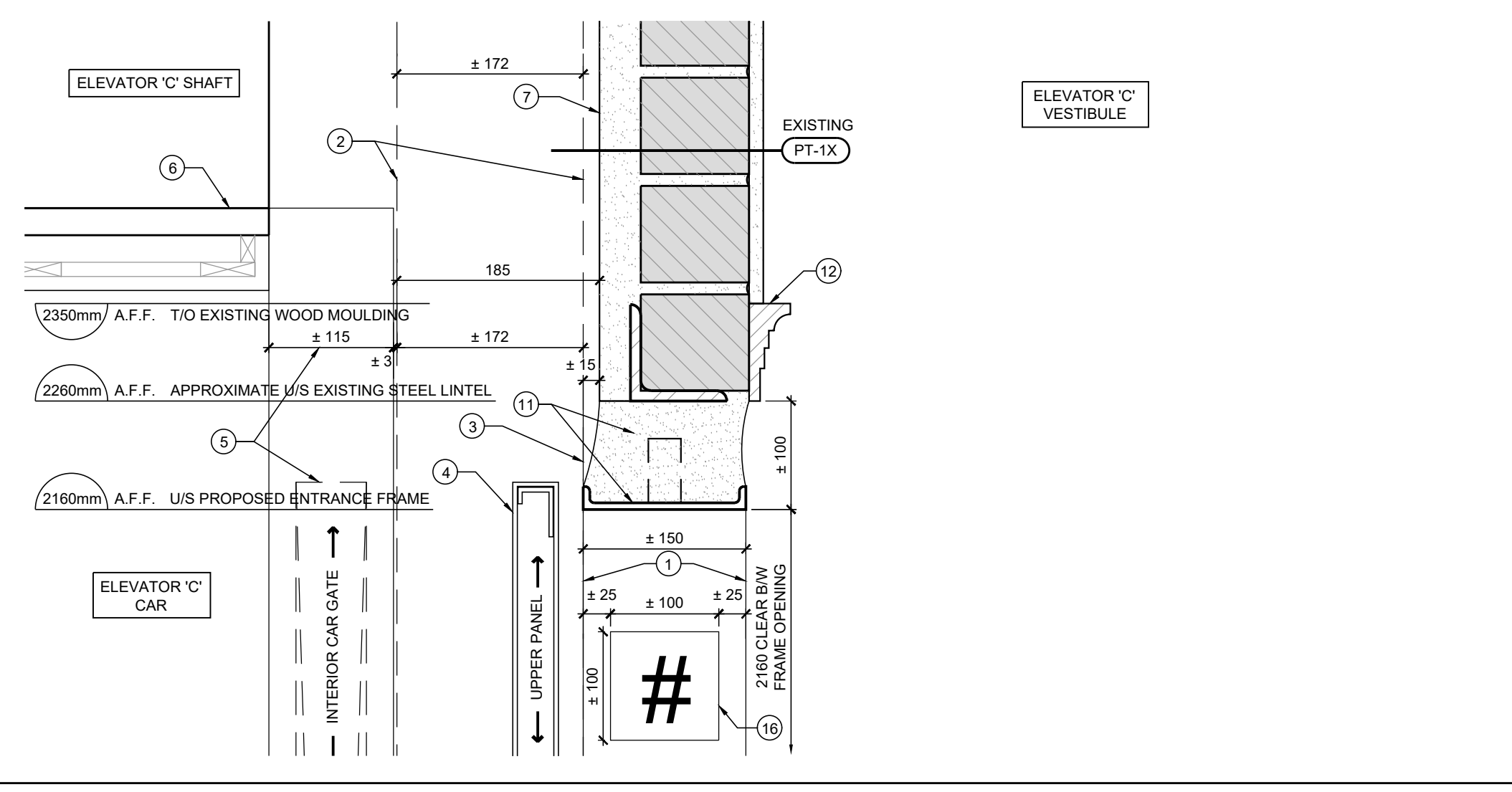


1 BUILDING SECTION @ ELEVATOR 'C' SHAFT
SCALE 1:50

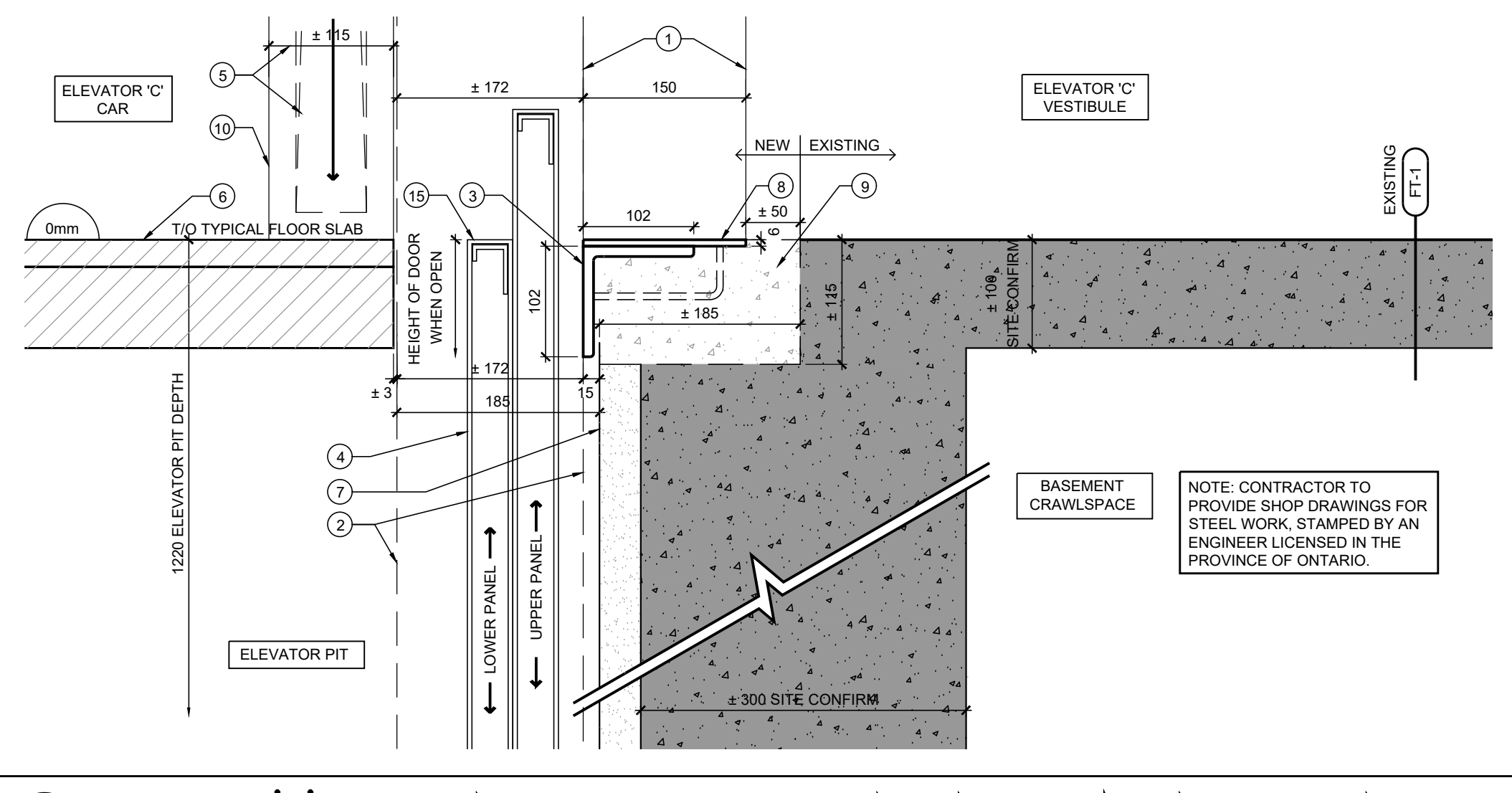
- ELEVATOR 'C' - NEW CONSTRUCTION DRAWING NOTES:**
- OUTLINE OF PROPOSED 1575 X 2160mm (5'-2" X 7'-1") ELEVATOR ENTRANCE FRAME TO BE INSTALLED AT EACH FLOOR LEVEL OF ELEVATOR 'C'. COORDINATE WITH ELEVATOR SHOP DRAWINGS PRIOR TO INSTALLATION.
 - LIMIT ENCROACHMENT OF NEW ELEVATOR FRAME AND L-ANGLE TO NO MORE THAN 15mm PROJECTION INTO HOISTWAY. ENSURE SILL ANGLE IS LEVEL AND FLUSH WITH ENTRANCE FRAME JAMB. ALIGN ENTRANCE FRAME AND SILL PLATES ON ALL FLOORS SO THAT EDGE OF ALL PROJECTIONS ARE VERTICALLY EQUAL AND PLUMB PRIOR TO INSTALLING VERTICAL ELEVATOR DOOR SUPPORTS.
 - NEW 1575 X 2160mm (5'-2" X 7'-1") VERTICALLY BI-PARTING ELEVATOR PASS DOORS. ALLOW 172mm (6 3/4") CLEAR OPENING B/W EDGE OF SILL PLATE AND FRONT EDGE OF ELEVATOR CAR PLATFORM. REFER TO ELEVATOR DOOR SHOP DRAWINGS TO CONFIRM DIMENSIONS AND FOR INSTALLATION PROCEDURE.
 - NEW ELEVATOR CAR INSTALLED W/ SPECIAL CARE TO INHABIT LIMITS OF EXISTING SITE CONDITIONS. ENSURE MINIMUM CLEARANCES ARE MAINTAINED IN FRONT OF CAR TO ACCOMMODATE NEW ELEVATOR PASS DOORS AND CAR GATE. COORDINATE WITH LIMITS OF EXISTING ELEVATOR SHAFT DIMENSIONS AND ELEVATOR SHOP DRAWINGS.
 - NEW 1.5 HR MIN. FRR ELEVATOR DOOR FRAME WITHIN EXISTING 2 HR FRR ELEVATOR SHAFT. FILL CAVITY WITH NON-SHRINK CONCRETE (TYPE N) FOR FULL DEPTH OF FRAME. MIN. 150mm AS PART OF A 2 HR F.R.R. WALL AROUND PERIMETER OF OPENING B/W EXISTING MASONRY AND NEW ELEVATOR ENTRANCE FRAME.
 - INSTALL ELEVATOR FRAME WITHIN OPENING WITH MINIMAL DISRUPTION TO EXISTING MOULDING AND HEADER FRAMING. SEAL ALL GAPS WITH FIRE CAULKING FOR CONTINUOUS FIRE SEPARATION.



2 ELEVATOR 'C' - TYP. ELEVATOR ENTRANCE FRAME INSTALLATION
SCALE 1:5



3 ELEVATOR 'C' - TYP. ELEVATOR ENTRANCE FRAME HEADER DETAIL
SCALE 1:5



4 ELEVATOR 'C' - GROUND ELEVATOR SILL - ENTRANCE FRAME INSTALLATION
SCALE 1:5

- ELEVATOR 'C' - NEW CONSTRUCTION DRAWING NOTES:**
- OUTLINE OF PROPOSED 1575 X 2160mm (5'-2" X 7'-1") ELEVATOR ENTRANCE FRAME TO BE INSTALLED AT EACH FLOOR LEVEL OF ELEVATOR 'C'. COORDINATE WITH ELEVATOR SHOP DRAWINGS PRIOR TO INSTALLATION.
 - OUTLINE OF ELEVATOR DOOR GUIDE RAIL (BEYOND) GUIDE TO BE PERFECTLY VERTICAL AND EQUAL FOR FULL HEIGHT OF SHAFT.
 - LIMIT ENCROACHMENT OF NEW ELEVATOR FRAME AND L-ANGLE TO NO MORE THAN 15mm PROJECTION INTO HOISTWAY. ENSURE SILL ANGLE IS LEVEL AND FLUSH WITH ENTRANCE FRAME JAMB. ALIGN ENTRANCE FRAME AND SILL PLATES ON ALL FLOORS SO THAT EDGE OF ALL PROJECTIONS ARE VERTICALLY EQUAL AND PLUMB PRIOR TO INSTALLING VERTICAL ELEVATOR DOOR SUPPORTS.
 - NEW 1575 X 2160mm (5'-2" X 7'-1") VERTICALLY BI-PARTING ELEVATOR PASS DOORS. ALLOW 172mm (6 3/4") CLEAR OPENING B/W EDGE OF SILL PLATE AND FRONT EDGE OF ELEVATOR CAR PLATFORM. REFER TO ELEVATOR DOOR SHOP DRAWINGS TO CONFIRM DIMENSIONS AND FOR INSTALLATION PROCEDURE.
 - PROVIDE APPROXIMATELY 150mm CLEARANCE WIDTH B/W INTERIOR CAR WALL AND EDGE OF CAR PLATFORM PROJECTION TO ACCOMMODATE ELEVATOR CAR GATE. COORDINATE WITH ELEVATOR SHOP DRAWINGS FOR REQUIRED OVERHEAD CLEARANCE NEEDED ABOVE SINGLE PASS CAR GATE.
 - NEW ELEVATOR CAR INSTALLED W/ SPECIAL CARE TO INHABIT LIMITS OF EXISTING SITE CONDITIONS. ENSURE MINIMUM CLEARANCES ARE MAINTAINED IN FRONT OF CAR TO ACCOMMODATE NEW ELEVATOR PASS DOORS AND CAR GATE. COORDINATE WITH LIMITS OF EXISTING ELEVATOR SHAFT DIMENSIONS TO ACCOMMODATE COMPONENTS LISTED IN AND ELEVATOR SHOP DRAWINGS.
 - LINE OF PLASTER FINISH OF EXISTING ELEVATOR SHAFT WALL TO REMAIN. PATCH AND REPAIR ANY AREAS DAMAGED DURING RENOVATION FOR SMOOTH CONTINUOUS FINISH.
 - 6 X 152mm STEEL SILL PLATE W/ CHECKER PLATE FINISH, CONNECTED TO A 102 X 102 X 5.5mm L-ANGLE AS PART OF THE ELEVATOR ENTRANCE FRAME. TO SILL HEIGHT TO MATCH T/O CORRIDOR FLOOR FINISH. REFER TO ELEVATOR SHOP DRAWINGS FOR DIMENSIONS, CONNECTION DETAILS AND INSTALLATION PROCEDURE.
 - ONCE SILL PLATE AND EMBED ANCHORS ARE IN PLACE, INFILL AREA WITH POURED CONCRETE (TYPE N) FOR FULL DEPTH OF FRAME. MIN. 150mm WITH A SMOOTH FINISH THAT MATCHES T/O EXISTING FLOOR SLAB. FINISH EXPOSED FLOOR SURFACE IN FRONT OF SILL PLATE WITH EPOXY PAINT FOR APPROXIMATELY 50mm TO 100mm WIDTH, FOR THE LENGTH OF THE ELEVATOR ENTRANCE. COLOUR TO MATCH EXISTING.
 - OUTLINE OF PROPOSED INTERIOR ELEVATOR CAR WALL (BEYOND) STYLE AND FINISH TO BE COORDINATED WITH ELEVATOR SHOP DRAWINGS.
 - NEW 1.5 HR MIN. FRR ELEVATOR DOOR FRAME WITHIN EXISTING 2 HR FRR ELEVATOR SHAFT. FILL CAVITY WITH NON-SHRINK CONCRETE (TYPE N) FOR FULL DEPTH OF FRAME. MIN. 150mm AS PART OF A 2 HR F.R.R. WALL AROUND PERIMETER OF OPENING B/W EXISTING MASONRY AND NEW ELEVATOR ENTRANCE FRAME FOR FULL THICKNESS OF WALL ASSEMBLY.
 - INSTALL ELEVATOR FRAME WITHIN OPENING WITH MINIMAL DISRUPTION TO EXISTING MOULDING AND HEADER FRAMING. SEAL ALL GAPS WITH FIRE CAULKING FOR CONTINUOUS FIRE SEPARATION.
 - EXISTING METAL CHANNEL RAILS SUPPORTING SUSPENDED AND SOMETIMES BARRELED LATHE AND PLASTER CEILING BELOW TO REMAIN. REPAIR OR REPLACE ANY WEAKENED CONNECTIONS IF DISCOVERED WITH MINIMAL DISRUPTION TO EXISTING CONDITIONS.
 - EXISTING LATHE / PLASTER CEILING TO REMAIN. (BARRELED ON GROUND FLOOR). PATCH AND REPAIR ANY AREAS DAMAGED DURING THE RENOVATION. PAINT COLOUR TO MATCH EXISTING.
 - INSTALL DOOR PANELS SO THAT TOP OF UPPER AND LOWER PANEL ARE CLEAR OF FLOOR PATHWAY WHEN IN THE OPEN POSITION TO ENSURE A SMOOTH TRANSITION OF TRAVEL OF FREIGHT PALLETS AND BARRIER-FREE ACCESS. ENSURE TOP OF DOOR PANELS ARE SPECIFIED W/ A DURABLE MATERIAL AND OF ADEQUATE CONSTRUCTION TO MAINTAIN LENGTH OF STANDARD LIFE CYCLE UNDER REGULAR WEAR.
 - PROPOSED LOCATION OF ELEVATOR SIGNAGE. HEIGHT OF PLAQUE, FONT TYPE AND TEXT SIZE TO MATCH BASE BUILDING STANDARD.
 - ENSURE EXAMINATION HOLE PREVIOUSLY CREATED DURING RENOVATION IS BUILT UP TO MEET THE REQUIREMENTS OF A 2-HR RATED ASSEMBLY. EITHER A 2-HR RATED CEILING ACCESS HATCH IS INSTALLED WITH ITS PERIMETER FIRE CAULKED, OR THE OPENING IS ENCLOSED WITH A MIN. OF TWO LAYERS OF TYPE 'X' GYPSUM BOARD FRAMED TO BLOCKING C/W FIRE CAULKING. IF GYPSUM BOARD IS INSTALLED, PAINT THE AREA OF REPAIR, COLOUR AND TEXTURE TO MATCH EXISTING.

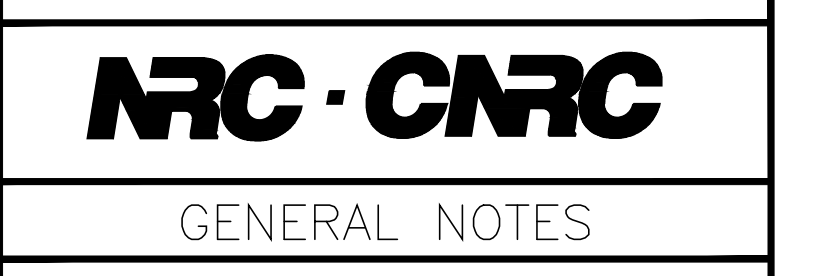
WALL SCHEDULE:

(PT-1X)	EXISTING ELEVATOR SHAFT WALL - 2 HOUR F.R.R. ASSEMBLY - BASED ON NBC
	EXISTING ASSEMBLY: 100mm THICK MASONRY BRICK W/ TERRACOTTA PLASTER ON SHAFT SIDE OF WALL
	INFILL CONTINUOUS GAP B/W EXISTING WALL ASSEMBLY AND NEW UL OR ULC FIRE RATED ELEVATOR ENTRANCE FRAME W/ CONCRETE (TYPE N) FOR 2-HR F.R.R. WALL ASSEMBLY.

FLOOR SCHEDULE:

(FT-1)	EXISTING GROUND FLOOR ASSEMBLY - 2 HOUR F.R.R. ASSEMBLY - BASED ON NBC 3.2.2.74 (GROUP F2 SPRINKLERED - ANY HEIGHT, ANY AREA)
	EXISTING ASSEMBLY: EPOXY COATING +/-100mm THICK CONCRETE SLAB COMPOSED OF APPROXIMATELY 64mm SLAB + 38mm FINISH TOPPING TO REMAIN (SITE CONFIRM EACH FLOOR)
	NEW ASSEMBLY: AS NOTED ON DRAWINGS, THRESHOLD IN FRONT OF DOOR TO RECEIVE NEW EMBEDDED SILL PLATE C/W EMBEDDED ANCHORS. INFILL AREA WITH POURED CONCRETE (TYPE N). FINISH EXPOSED FLOOR SURFACE IN FRONT OF SILL PLATE WITH EPOXY PAINT. COLOUR TO MATCH EXISTING.

(FT-2)	EXISTING TYPICAL FLOOR ASSEMBLY - 2 HOUR F.R.R. ASSEMBLY - BASED ON NBC 3.2.2.74 (GROUP F2 SPRINKLERED - ANY HEIGHT, ANY AREA)
	EXISTING ASSEMBLY: EPOXY COATING +/-100mm THICK CONCRETE SLAB COMPOSED OF APPROXIMATELY 64mm SLAB + 38mm FINISH TOPPING TO REMAIN (SITE CONFIRM EACH FLOOR)
	CORRUGATED METAL DECK 255mm (10") DEEP BENT METAL OPEN WEB JOISTS PLENUM SPACE METAL CHANNELS LATHE AND PLASTER CEILING
	NEW ASSEMBLY: AS NOTED ON DRAWINGS, THRESHOLD IN FRONT OF DOOR TO RECEIVE NEW EMBEDDED SILL PLATE C/W EMBEDDED ANCHORS. INFILL AREA WITH POURED CONCRETE (TYPE N). FINISH EXPOSED FLOOR SURFACE IN FRONT OF SILL PLATE WITH EPOXY PAINT. COLOUR TO MATCH EXISTING.



GENERAL NOTES

- CONTRACTOR TO VERIFY ALL DIMENSIONS AND CLEARANCES ON SITE PRIOR TO CONSTRUCTION AND REPORT ANY DISCREPANCIES AND/OR OMISSIONS TO DEPARTMENTAL REPRESENTATIVE.
- CONTRACTOR MUST VISIT THE SITE AND FULLY FAMILIARIZE THEMSELVES WITH THE SCOPE OF THE WORK PRIOR TO PROJECT COMMENCEMENT.
- ALL TRADES TO COORDINATE WORK ON SITE, WITH APPROVAL OF DEPARTMENTAL REPRESENTATIVE TO AVOID ANY CONFLICTS AND/OR INTERFERENCE.
- ANY AND ALL REQUIRED SHUTDOWNS SHALL BE COORDINATED WITH DEPARTMENTAL REPRESENTATIVE.
- INSTALLATION OF ALL SYSTEMS SHALL BE IN ACCORDANCE WITH APPLICABLE CODES AND STANDARDS.
- CONTRACTOR TO BE RESPONSIBLE FOR REINSTATEMENT AND REPAIR OF ANY DAMAGE CAUSED BY WORK.
- CONTRACTOR SHALL PREVENT THE SPREAD OF DUST AND DEBRIS BEYOND AREA OF WORK AND CLEAN ALL SURFACES AT COMPLETION.

stamp	estampille	stamp	estampille
-------	------------	-------	------------

ALCAIDE WEBSTER ARCHITECTS INC
202 - 1320 CARLING AVENUE
OTTAWA, ON K1Z 7K8 www.awp-arch.ca
ARCHITECTURE PLANNING DESIGN BUILD PROJECT MANAGEMENT

KEY PLAN PLAN CLÉ

No.	Date	Revision	By:	For:
4	21/02/2020	ISSUED FOR TENDER	MH	MH
3	20/12/2019	ISSUED FOR 99% REVIEW	MH	MH
2	12/11/2019	ISSUED FOR 66% REVIEW	MH	MH
1	22/10/2019	ISSUED FOR REVIEW	MH	MH

- Date Printed
- Verify all dimensions and site conditions and be responsible for same
 - Vérifier toutes les dimensions et l'état des lieux et en assumer la responsabilité

A Detail no.	A
No. du détail	A
B Location drawing no. sur dessin no.	B C
C Drawing no. dessin no.	B C

FREIGHT ELEVATOR 'C' REPLACEMENT
100 SUSSEX

NEW CONSTRUCTION - SECTION DETAILS,

designed	conçu	date	date
VA/MH		02/21/2020	
drawn	dessiné	scale	échelle
MH		AS NOTED	
checked	vérifié	sheet	feuille
VA		of/de	
approved	approuvé	W.O.no.	D.T.no.
VA			

dwg.no. **5813-A101** dessin no.
ACAD file: **5813-A101** fichier CDAC: