



**MECHANICAL DRAWING LIST:**

NO.	NAME	DESCRIPTION	SCALE
1 OF 5	M001	MECHANICAL LEGEND & DRAWING LIST	N.T.S.
2 OF 5	M101	MECHANICAL MAIN FLOOR PLAN	1:100
3 OF 5	M102	MECHANICAL UPPER FLOOR AND LOWER ROOF PLAN	1:100
4 OF 5	M400	MECHANICAL SCHEMATICS AND DETAILS	N.T.S.
5 OF 5	M500	MECHANICAL EQUIPMENT SCHEDULES	N.T.S.

**ELECTRICAL DRAWING LIST**

NO.	NAME	DESCRIPTION	SCALE
1 OF 3	E000	ELECTRICAL LEGEND AND DRAWING LIST	N.T.S.
2 OF 3	E101	MAIN FLOOR PLAN - ELECTRICAL	1:100
3 OF 3	E102	UPPER FLOOR PLAN - ELECTRICAL	1:100

**ARCHITECTURAL DRAWING LIST**

NO.	NAME	DESCRIPTION	SCALE
1 OF 3	A101	ROOF PLAN - DEMOLITION, DETAILS - DEMOLITION	AS NOTED
2 OF 3	A102	ROOF PLAN - NEW, STAIR SECTION	AS NOTED
3 OF 3	A103	ROOF DETAILS	AS NOTED

**STRUCTURAL DRAWING LIST**

NO.	NAME	DESCRIPTION	SCALE
1 OF 1	S101	STRUCTURAL - GENERAL NOTES, PLAN AND SECTIONS	AS NOTED

**GENERAL NOTES :**

- CONTACT AND COORDINATE WITH THE DEPARTMENTAL REPRESENTATIVE FOR ALL WORK AFFECTING THE BASE BUILDING HVAC, PLUMBING OR LIFE SAFETY SYSTEMS. EXISTING BUILDING SYSTEMS SUCH AS FIRE ALARM, SPRINKLER, CONTROLS, COMMUNICATION, SECURITY AND BUILDING SYSTEMS, TO REMAIN FULLY OPERATIONAL DURING CONSTRUCTION.
- DEVELOP WORK SCHEDULE AND SUBMIT TO DEPARTMENTAL REPRESENTATIVE PRIOR TO START OF WORK.
- PROVIDE TEMPORARY HEATING AND VENTILATION. HVAC SYSTEM SHALL BE OPERATIONAL THROUGHOUT. COORDINATE THE MINIMUM HVAC REQUIREMENTS WITH THE DEPARTMENTAL REPRESENTATIVE AND SUBMIT HVAC OPERATION PLAN.
- PATCH AND MAKE GOOD ALL DAMAGED CEILING/WALL/ROOF/FLOORING FOR NEW AND DEMOLITION MECHANICAL WORK. REPLACE ANY DAMAGE AND/OR CUT CEILING TILE. COORDINATE WITH GENERAL CONTRACTOR.
- LOCATION OF EXISTING EQUIPMENT SHOWN ON THIS DRAWING IS FOR INFORMATION ONLY. CONTRACTOR SHOULD REVIEW AND CHECK THE EXACT LOCATION, SIZE, ELEVATION AND INVERT OF ALL EXISTING EQUIPMENT AND PIPING ON SITE PRIOR TO COMMENCING WITH WORK.
- MODIFY THE SIZE AND ROUTING OF NEW DUCTWORK AND PIPING AS REQUIRED TO SUIT THE SITE CONDITIONS WITHOUT EXTRA COST TO THE DEPARTMENTAL REPRESENTATIVE. PROVIDE ADEQUATE OFFSETS, AND TRANSITIONS ON NEW DUCTWORK AND PIPING AS REQUIRED TO SUIT SITE CONDITIONS. CAPTURE ALL VARIATIONS ON AS-BUILT DRAWINGS. SUBMIT AS-BUILT DRAWINGS ON COMPLETION OF PROJECT.
- COORDINATE WITH ALL OTHER AFFECTED SUB-TRADES.
- COORDINATE WITH ELECTRICAL CONTRACTOR TO DECOMMISSION ELECTRICAL POWER, WIRING AND CIRCUITS.
- PROVIDE INSULATION ON NEW DUCTWORK. REFER TO SPECIFICATION.
- PROVIDE ACOUSTIC DUCT LINER WITHIN NEW SUPPLY AND RETURN DUCT TRANSITIONS AT EACH NEW AHU CONNECTION.
- PROVIDE DUCT CLEANING TO ALL NEW AND EXISTING DUCTWORK, INCLUDING ALL MAIN DUCT, ALL BRANCH DUCT, ALL PLENUMS AND UNDERFLOOR BRANCH DUCT. WIPE DOWN ALL AIR TERMINAL OUTLETS MOUNTED IN CEILING, IN FLOOR, ON WALLS. VACUUM SPACE ABOVE T-BAR CEILINGS. SUBMIT DUCT CLEANING CERTIFICATE.
- PROVIDE FIRE STOPPING FOR ALL PENETRATIONS THROUGH FIRE RATED WALLS. SUBMIT FIRE STOPPING CERTIFICATE.
- SEISMICALLY RESTRAIN ALL RELOCATED AND NEW MECHANICAL EQUIPMENT. SUBMIT SEISMIC LETTERS OF ASSURANCE FROM SEISMIC PROFESSIONAL ENGINEER.
- WHERE HVAC EQUIPMENT (ACU'S, FANS) HAVE BEEN REMOVED, REMOVE ALL ASSOCIATED ABANDONED CONTROLS AND CONTROL WIRING, DUCTWORK AND SHEET METAL ACCESSORIES.
- PRIOR TO START OF WORK, CONTRACTOR TO ENSURE ALL HVAC CONTROL SENSORS AND COVERS ARE PROTECTED FROM DAMAGE. REPORT ALL DAMAGED SENSORS TO THE DEPARTMENTAL REPRESENTATIVE PRIOR TO START OF WORK.
- AT COMPLETION OF THE PROJECT, HVAC CONTROL SENSORS (NEW AND EXISTING) ARE TO BE CHECKED FOR PROPER OPERATION AND ARE TO BE CALIBRATED. REPORT ALL DAMAGED SENSORS TO THE DEPARTMENTAL REPRESENTATIVE. CONTRACTOR SHALL REPLACE DAMAGED HVAC CONTROL SENSORS.

**MECHANICAL LEGEND:**

**TAGS AND SYMBOLS**

AIR TERMINAL TAG  
 SUPPLY S  
 RETURN R  
 EXHAUST E  
 LOUVRE L

QUANTITY  
 TYPE  
 FLOW (L/S)  
 SIZE (MM)

AIR FLOW TAG FOR EXISTING AIR TERMINAL (L/S)

MECHANICAL EQUIPMENT TAG

CONNECT TO EXISTING  
 EXISTING TO REMAIN

SPECIFIC KEY NOTE  
 SPECIFIC KEY NOTE (DEMOLITION)

DRAWING REVISION NO.

SECTION NO. AND CUT LINE

SECTION/DETAIL DESCRIPTION

ACCESS PANEL (450X450) U.N.O.

DOOR UNDERCUT 25MM

FLOW DIRECTION - AIR  
 FLOW DIRECTION - FLUID

**HVAC DUCTING SYMBOLS**

SQUARE ELBOW WITH MULTI-BLADE TURNING VANES

SUPPLY DUCT TOWARD, AWAY

RETURN OR TRANSFER DUCT TOWARD, AWAY

EXHAUST DUCT TOWARD, AWAY

OUTDOOR AIR DUCT TOWARD, AWAY

ROUND DUCT TOWARD, AWAY

BRANCH TAKEOFF SQUARE->SQUARE

BRANCH TAKEOFF SQUARE->ROUND

BRANCH TAKEOFF ROUND->ROUND

**HVAC**

DUCTWORK RECTANGULAR

DUCTWORK ROUND

SINGLE LINE DUCTWORK

CAPPED OFF DUCT

ACOUSTIC DUCT LINER

BALANCING DAMPER

BACKDRAFT DAMPER  
 BDD = BACKDRAFT DAMPER  
 BBD = "BALANCED" BACKDRAFT DAMPER

FIRE DAMPER

SUPPLY AIR GRILLE OR DIFFUSER

RETURN AIR GRILLE

EXHAUST AIR GRILLE

HEATING WATER SUPPLY PIPING

HEATING WATER RETURN PIPING

HVAC DRAINAGE PIPING

HVAC MAKE-UP WATER PIPING

**PLUMBING**

GAS PIPING

DOMESTIC COLD WATER PIPING

DOMESTIC HOT WATER PIPING

DOM. HOT WATER RECIRC. PIPING

SANITARY PIPING

SANITARY PIPING BELOW SLAB

STORM PIPING

STORM PIPING BELOW SLAB

SANITARY VENT PIPING

FLOOR DRAIN

**FIRE SUPPRESSION**

FIRE MAIN PIPING

SPRINKLER PIPING

SPRINKLER HEAD - PENDANT

SPRINKLER HEAD - UPRIGHT

SPRINKLER HEAD - SIDEWALL

**DEMOLITION**

EXISTING EQUIPMENT TO BE REMOVED

EXISTING DUCTWORK OR PIPING TO BE REMOVED

EXISTING DIFFUSER OR GRILLE TO BE REMOVED

EXISTING THERMOSTAT, SENSOR, OR SWITCH TO BE REMOVED

EXISTING VALVE ACCESSORIES TO BE REMOVED

RELOCATE EXISTING EQUIPMENT

**HVAC PIPING SYMBOLS**

FLANGE CONNECTION

UNION CONNECTION

PIPE CAP

PIPE BREAK

PIPING ELBOW DOWN

PIPING ELBOW UP

PIPING TEE UP

PIPING TEE DOWN

PIPING TEE

GATE VALVE

GLOBE VALVE

PRESSURE REDUCING VALVE

CHECK VALVE - SWING GATE TYPE

RELIEF VALVE - PRESSURE AND TEMPERATURE

CIRCUIT BALANCING VALVE C/W PRESSURE PORTS

STRAINER

RELIEF AIR VALVE (AT EACH HIGHPOINT)

PUMP WITH REDUCER ON BOTH ENDS

PIPE THERMOMETER

PIPE PRESSURE GAUGE

PIPE PRESSURE GAUGE AND COCK

BACKFLOW PREVENTER, REDUCED PRESSURE ZONE (RPZ) TYPE

2-WAY CONTROL VALVE C/W ACTUATOR - CONNECT TO DDC

3-WAY CONTROL VALVE C/W ACTUATOR - CONNECT TO DDC

SOLENOID VALVE

PIPE TEMPERATURE SENSOR - CONNECT TO DDC

PIPE PRESSURE SENSOR - CONNECT TO DDC

PIPE FLOW SWITCH - CONNECT TO DDC

HEAT TRACING (ELECTRIC)

**HVAC CONTROLS SYMBOLS**

CONTROL WIRING

THERMOSTAT

WALL MOUNTED SWITCH

WALL MOUNTED VARIABLE SPEED SWITCH

CARBON DIOXIDE SENSOR

OCCUPANCY SENSOR

SMOKE SENSOR

MOTORIZED DAMPER C/W ACTUATOR

Revision/Revision	Description/Description	Date/Date
0	ISSUED FOR TENDER	2020.05.27

Client/client

**CORRECTIONAL SERVICE CANADA**

Project title/Titre du projet  
**CHILLIWACK CORRECTIONAL CENTRE  
 CHILLIWACK, BC**

**FLAT ROOF REPAIR AND  
 HVAC REPLACEMENT**

Consultant Signature Box Only

Designed by/Concept par  
**SH / LB**

Drawn by/Dessine par  
**JW / SH**

PWGSC Project Manager/Administrateur de Projets TPSOC  
**KEN WENTZ**

PWGSC, Regional Manager, Architectural and Engineering Services/  
 Gestionnaire régional, services d'architecture et de génie, TPSOC  
**PREETIPAL PAUL**

Drawing title/Titre du dessin

**MECHANICAL LEGEND &  
 MECHANICAL DRAWING LIST**

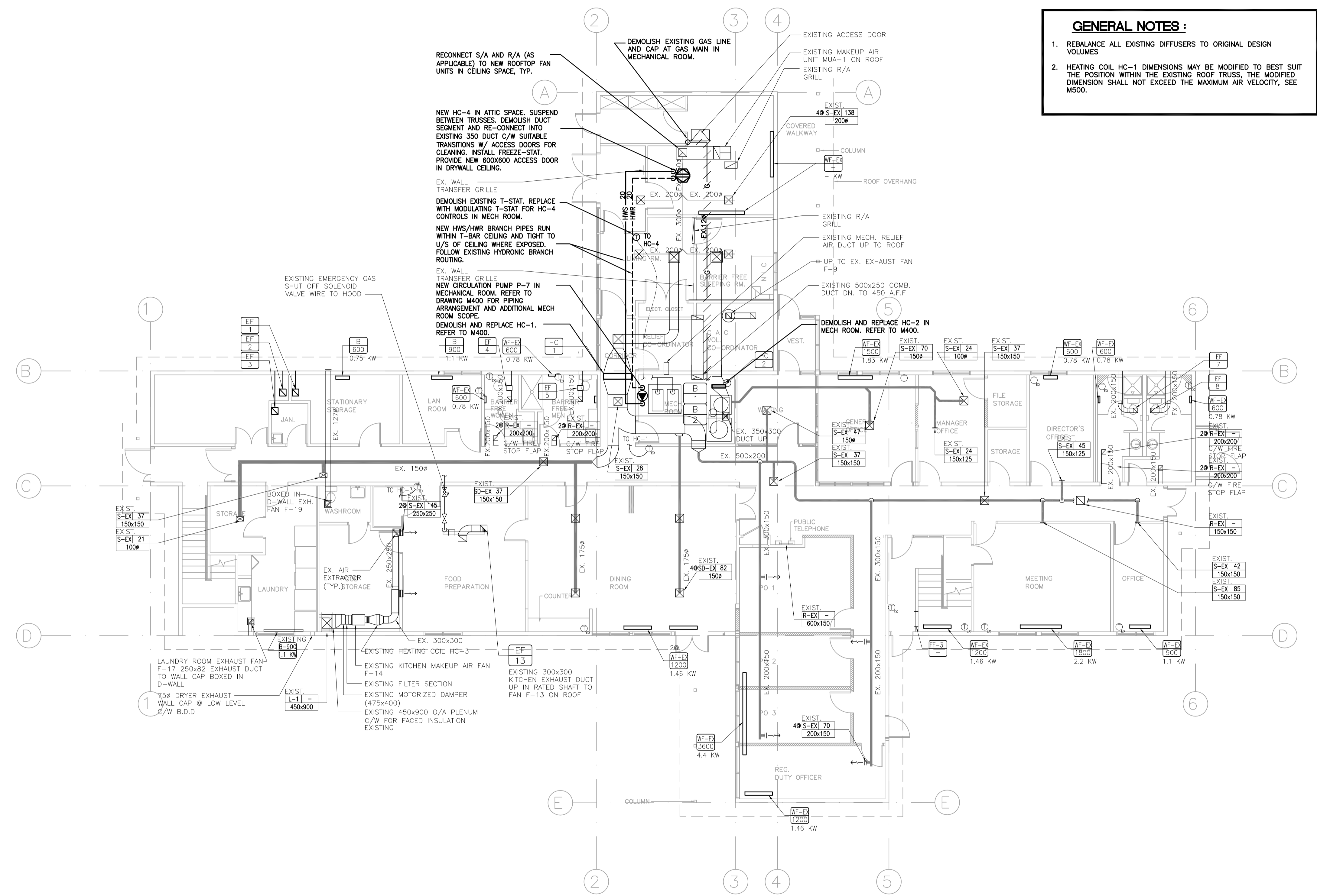
Project No./No. du projet	Sheet/Feuille	Revision no./ La Révision no.
<b>R.097948.001</b>	<b>M001</b>	<b>0</b>
	<b>1 OF 5</b>	



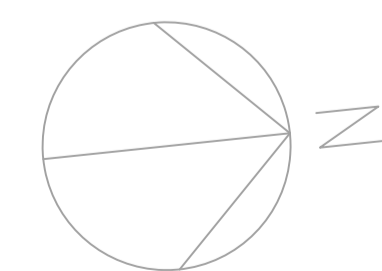


**GENERAL NOTES :**

- REBALANCE ALL EXISTING DIFFUSERS TO ORIGINAL DESIGN VOLUMES
- HEATING COIL HC-1 DIMENSIONS MAY BE MODIFIED TO BEST SUIT THE POSITION WITHIN THE EXISTING ROOF TRUSS, THE MODIFIED DIMENSION SHALL NOT EXCEED THE MAXIMUM AIR VELOCITY, SEE M500.



**1** MAIN FLOOR PLAN – MECHANICAL (DEMO & NEW)  
MO02 SCALE: 1:100



Revision/Revisión	Description/Description	Date/Date
0	ISSUED FOR TENDER	2020.05.27

Client/client  
**CORRECTIONAL SERVICE CANADA**

Project title/Titre du projet  
**CHILLIWACK CORRECTIONAL CENTRE  
CHILLIWACK, BC**

**FLAT ROOF REPAIR AND  
HVAC REPLACEMENT**

Consultant Signature Box Only

Designed by/Concept par  
**SH / LB**

Drawn by/Dessiné par  
**JW / SH**

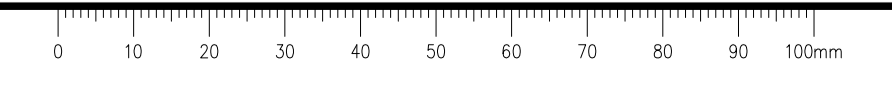
PWGSC Project Manager/Administrateur de Projets TPSGC  
**KEN WENDT**

PWGSC, Regional Manager, Architectural and Engineering Services/  
Gestionnaire régional, services d'architecture et de génie, TPSGC  
**PREETIPAL PAUL**

Drawing title/Titre du dessin

**MECHANICAL  
MAIN FLOOR PLAN**

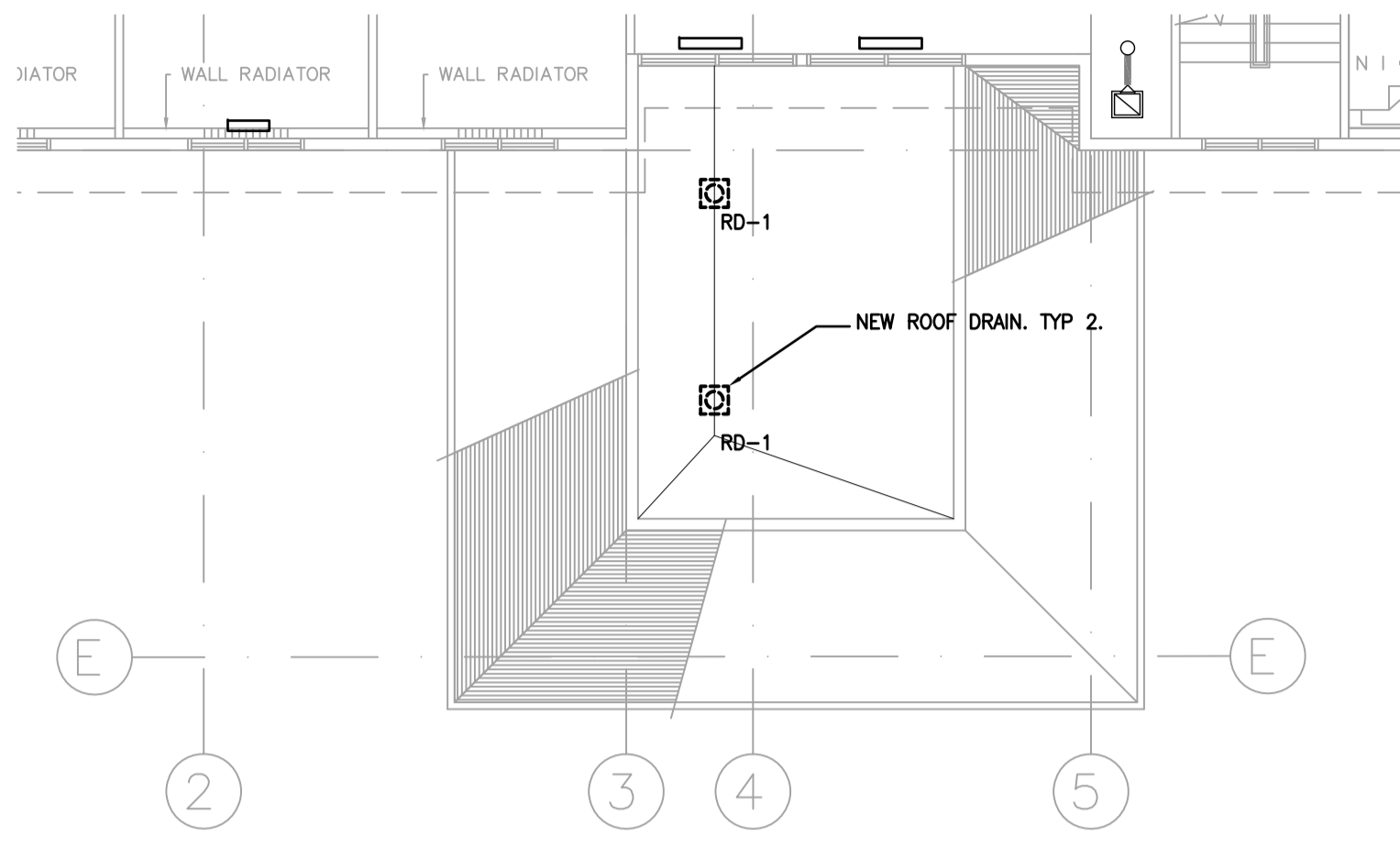
Project No./No. du projet <b>R.097948.001</b>	Sheet/Feuille <b>M101</b>	Revision no./ La Révision no. <b>0</b>
--	------------------------------	---



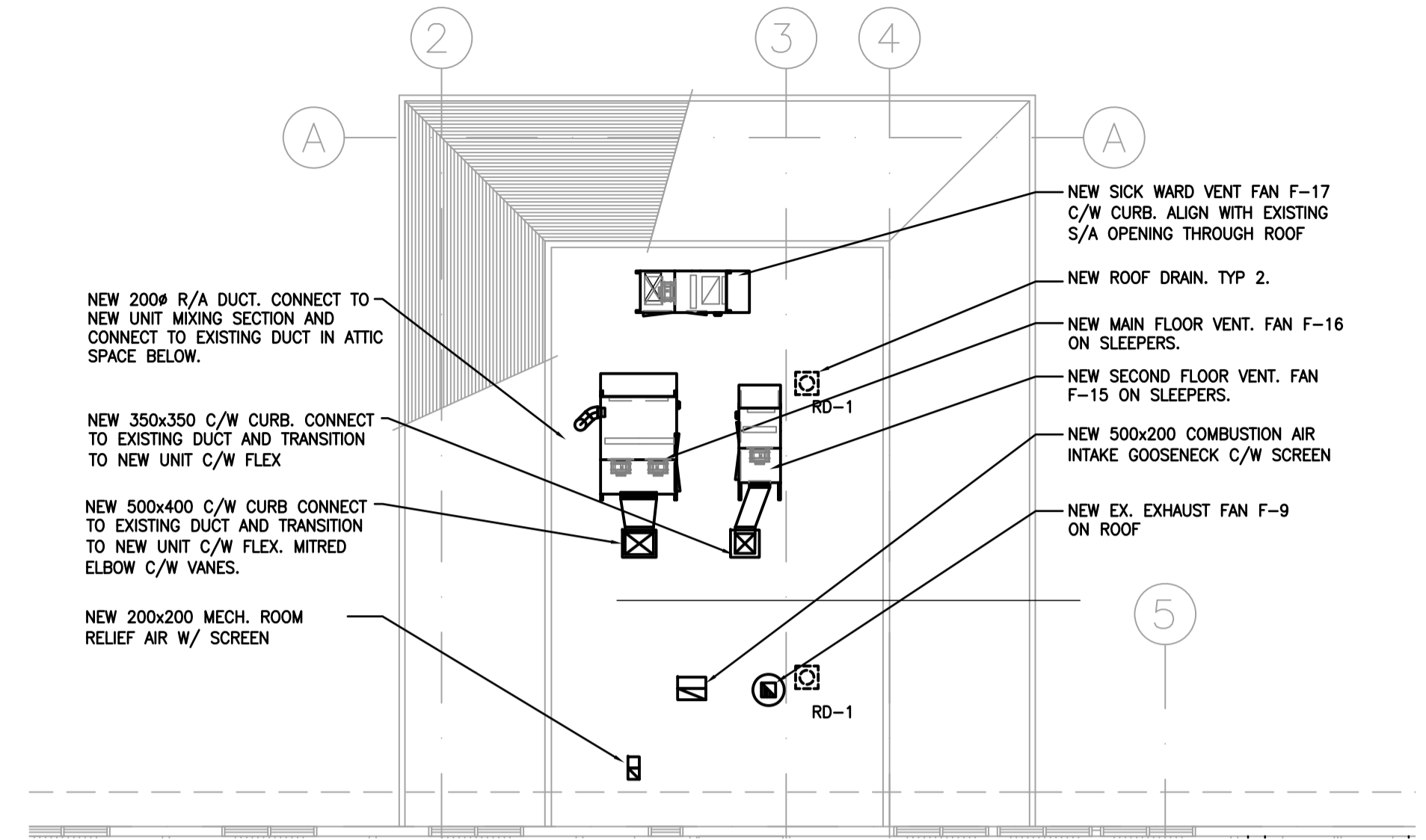


**GENERAL NOTES :**

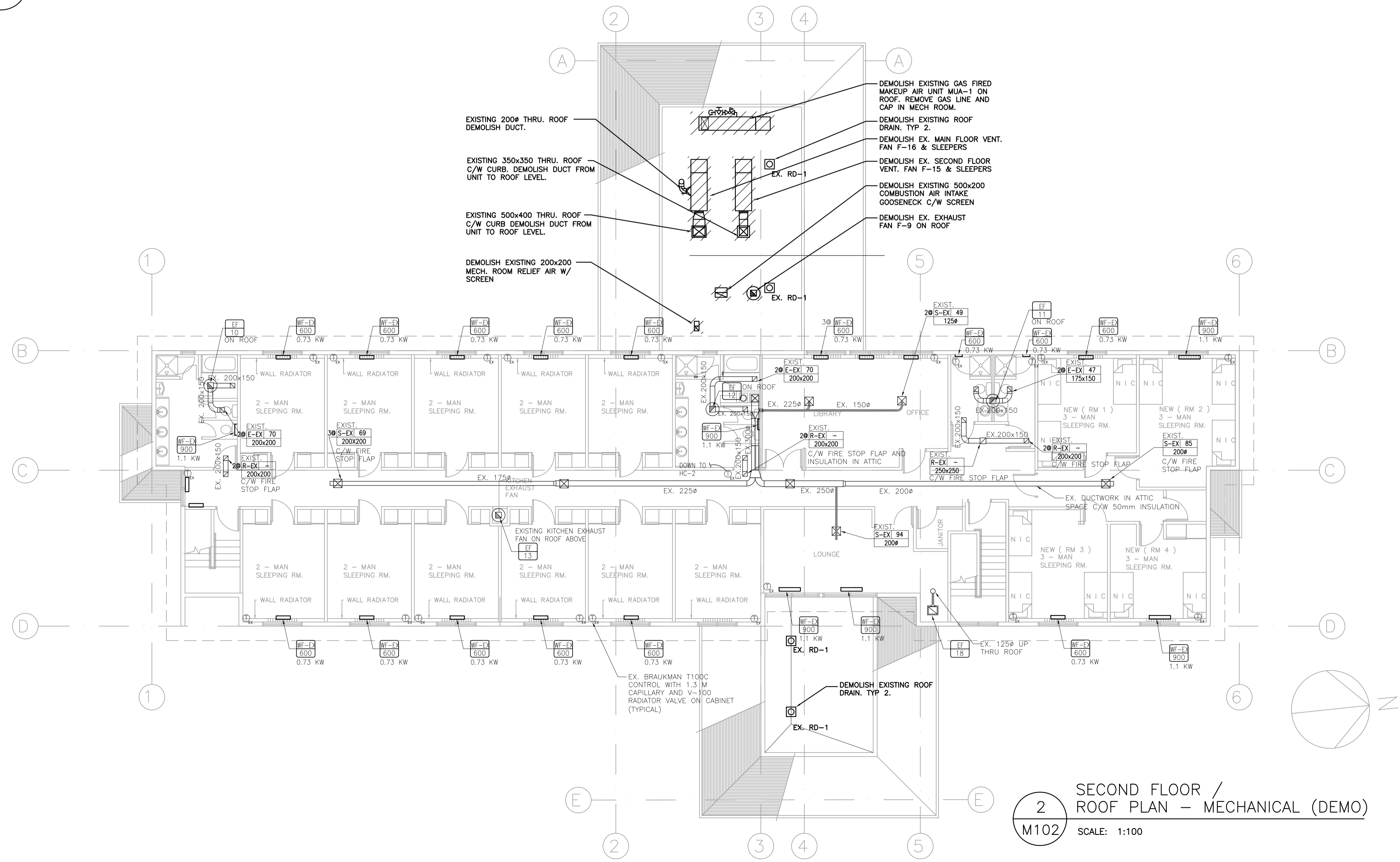
- COORDINATE ROOFTOP UNIT PLACEMENT WITH STRUCTURAL REQUIREMENTS.
- REBALANCE ALL EXISTING DIFFUSERS TO ORIGINAL DESIGN VOLUMES
- PROVIDE INTERNAL DUCT INSULATION ON ALL EXPOSED DUCT. REFER TO SPEC.



**3 PARTIAL EAST ROOF PLAN - MECHANICAL (NEW)**  
SCALE: 1:100



**1 PARTIAL WEST ROOF PLAN - MECHANICAL (NEW)**  
SCALE: 1:100



**2 SECOND FLOOR / ROOF PLAN - MECHANICAL (DEMO)**  
SCALE: 1:100

Revision/Revisions	Description/Description	Date/Date
0	ISSUED FOR TENDER	2020.05.27

**CORRECTIONAL SERVICE CANADA**

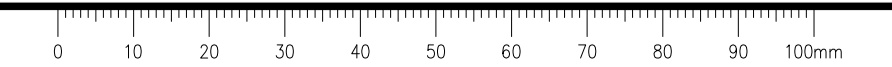
Project title/Titre du projet  
**CHILLIWACK CORRECTIONAL CENTRE CHILLIWACK, BC**

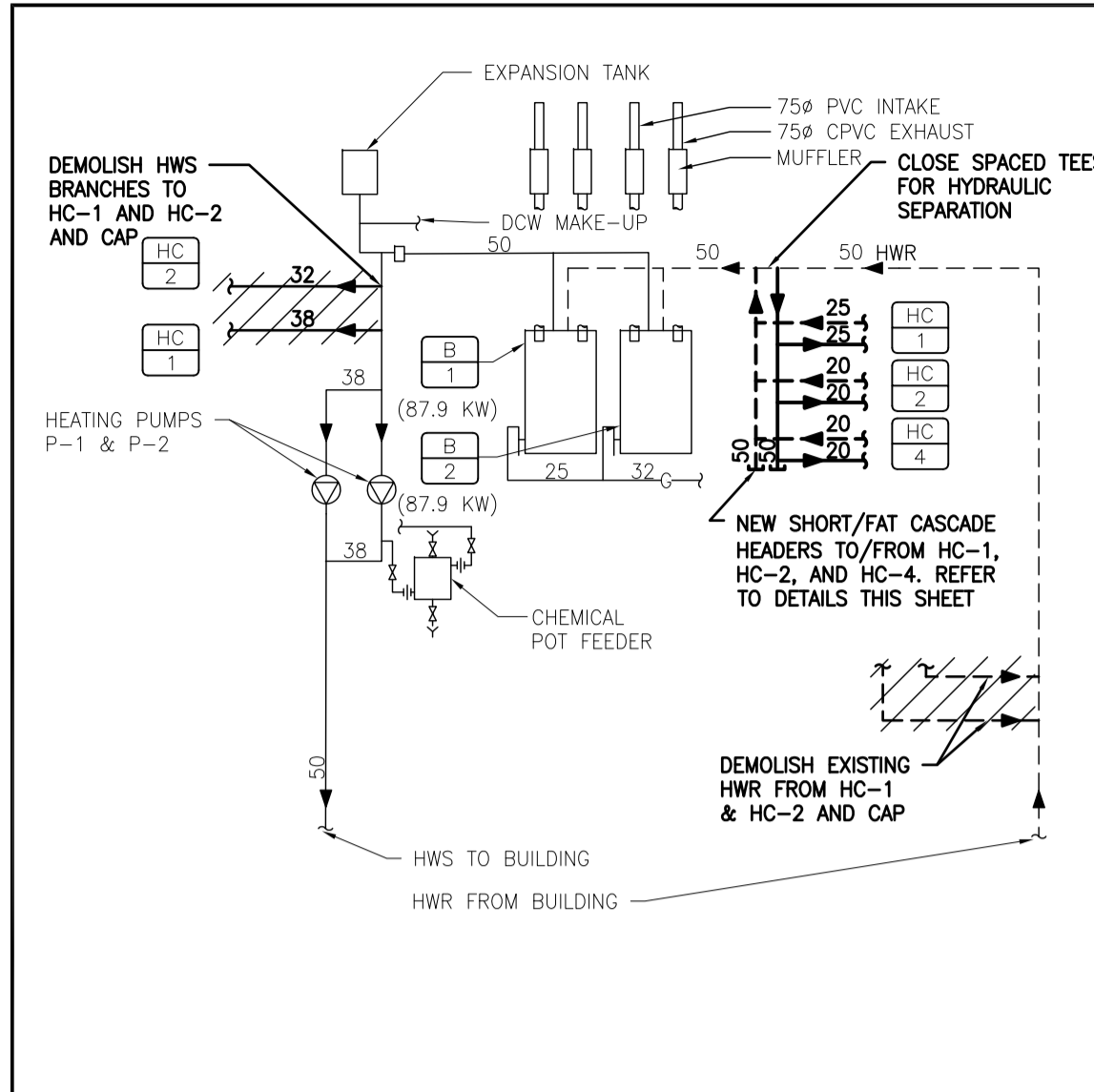
**FLAT ROOF REPAIR AND HVAC REPLACEMENT**

Consultant Signature Box Only  
Designed by/Concept par **SH / LB**  
Drawn by/Dessiné par **JW / SH**  
PWGSC Project Manager/Administrateur de Projets TPSGC **KEN WENDT**  
PWGSC Regional Manager, Architectural and Engineering Services/  
Gestionnaire régional, services d'architecture et de génie, TPSGC **PREETIPAL PAUL**

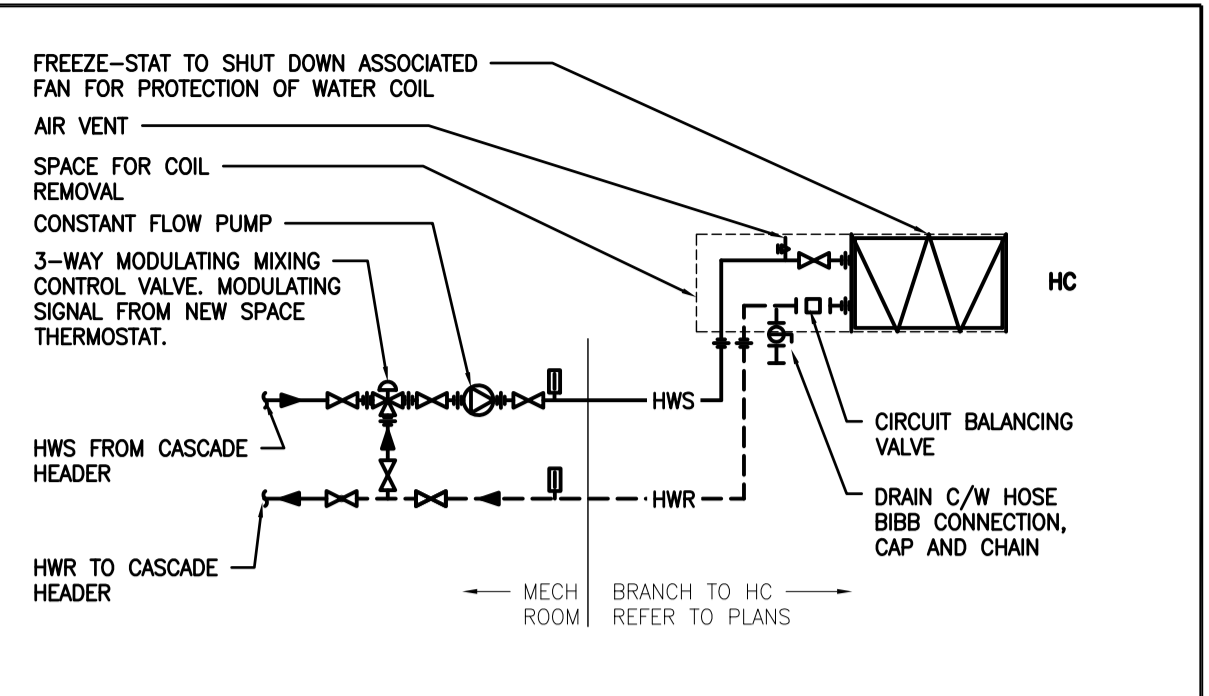
**MECHANICAL UPPER FLOOR AND LOWER ROOF PLAN**

Project No./No. du projet <b>R.097948.001</b>	Sheet/Feuille <b>M102</b>	Revision no./ La Révision no. <b>0</b>
--	------------------------------	--

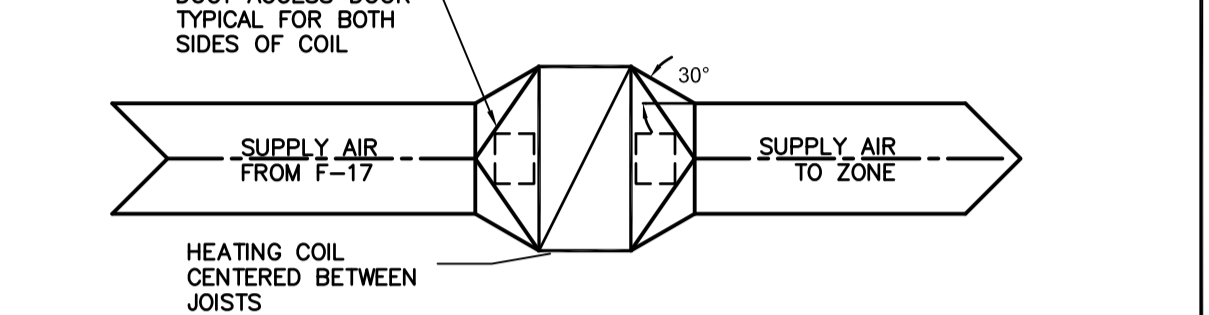




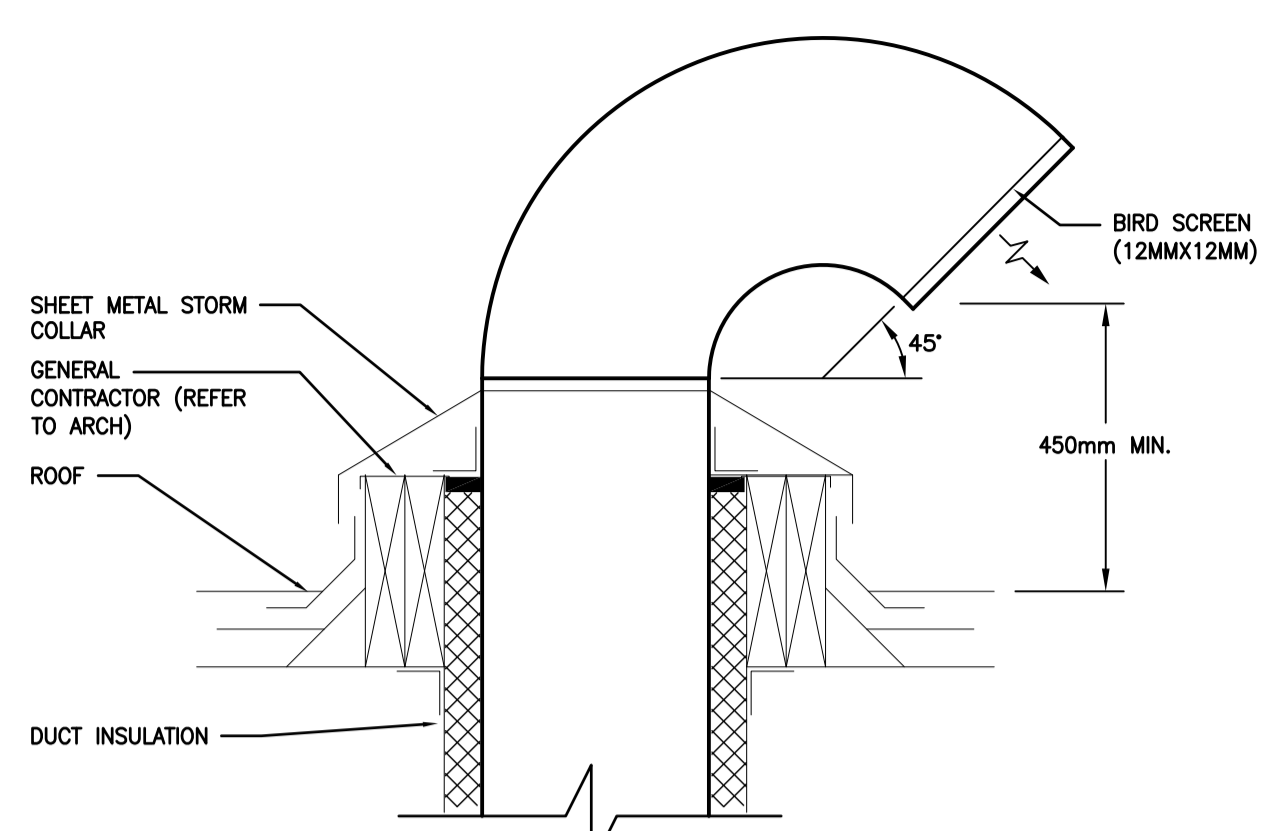
1 HOT WATER HEATING PIPING SYSTEM SCHEMATIC - MECHANICAL ROOM  
M400 SCALE: N.T.S.



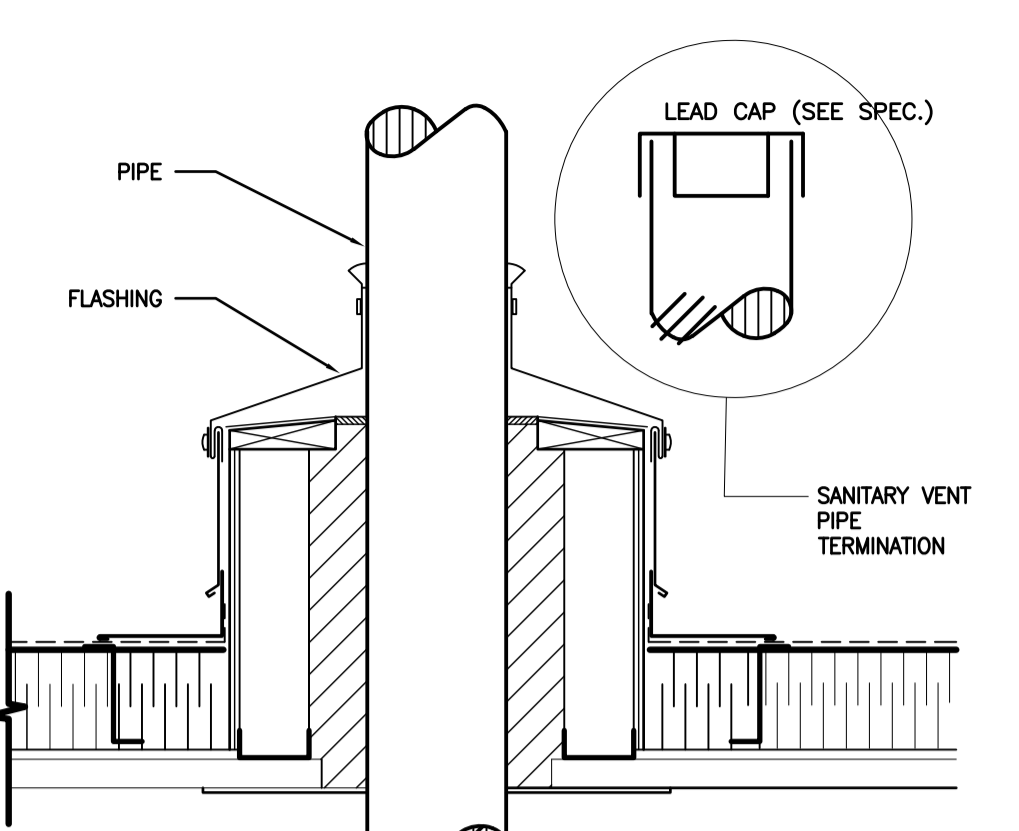
4 NEW HEATING COIL (HC-1, 2 & 4) PIPING SCHEMATIC  
M400 SCALE: N.T.S.



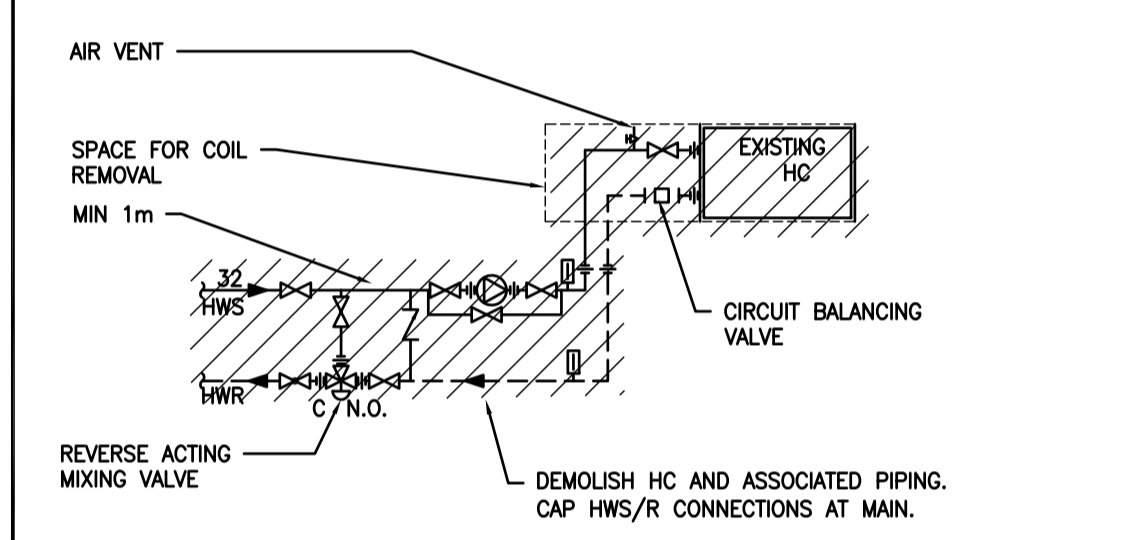
5 NEW HEATING COIL (HC-4) DUCT DETAIL  
M400 SCALE: N.T.S.



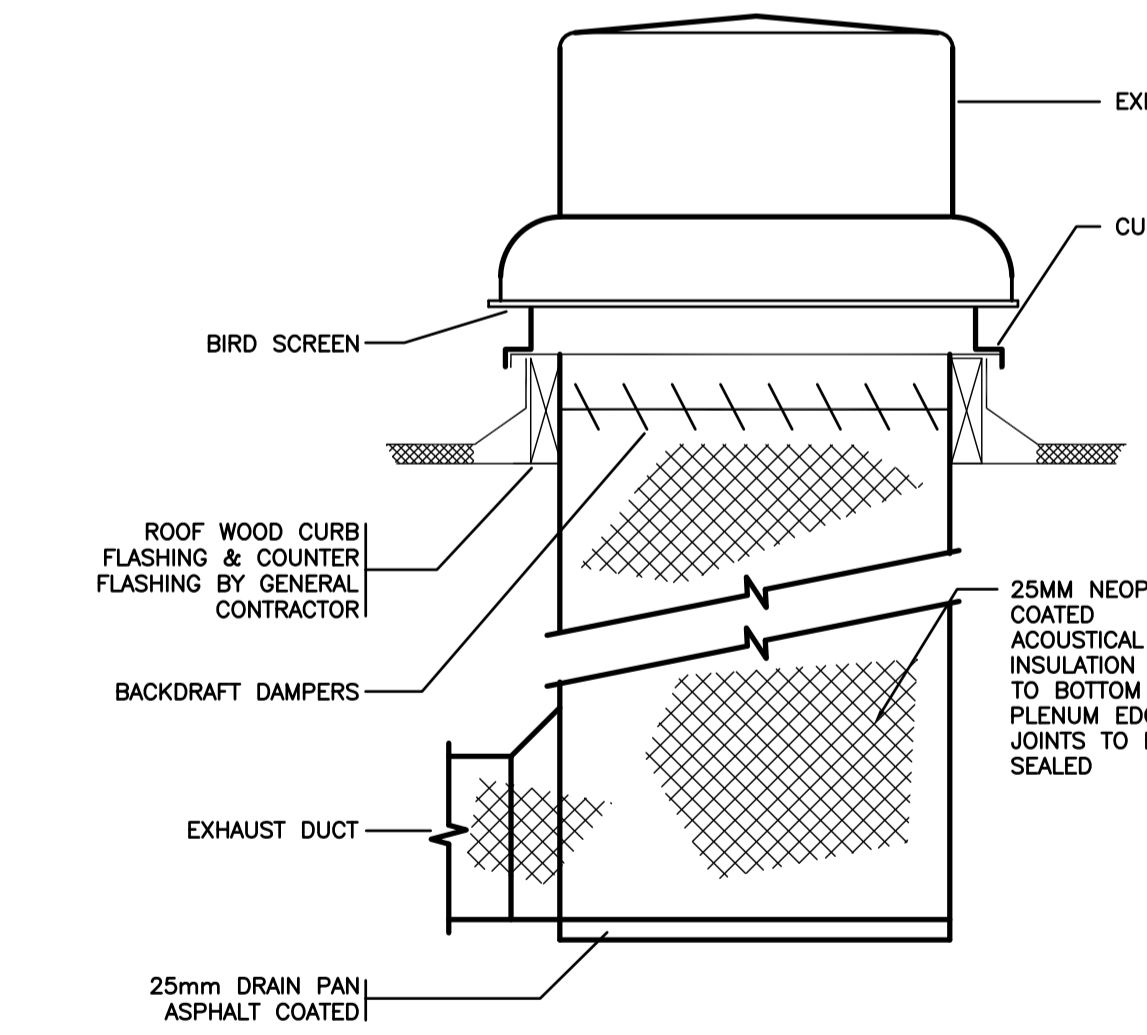
6 RELIEF OR EXHAUST GOOSENECK  
M400 SCALE: N.T.S.



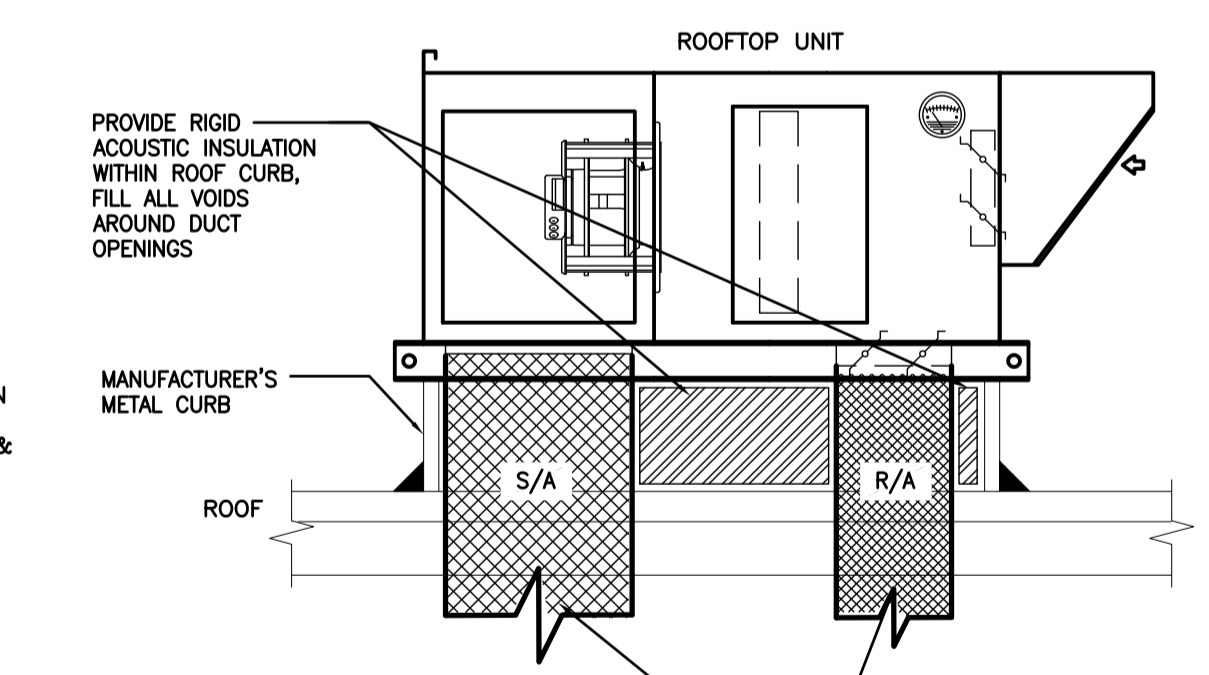
7 TYPICAL PIPE PENETRATION THROUGH ROOF DETAIL  
M400 SCALE: N.T.S.



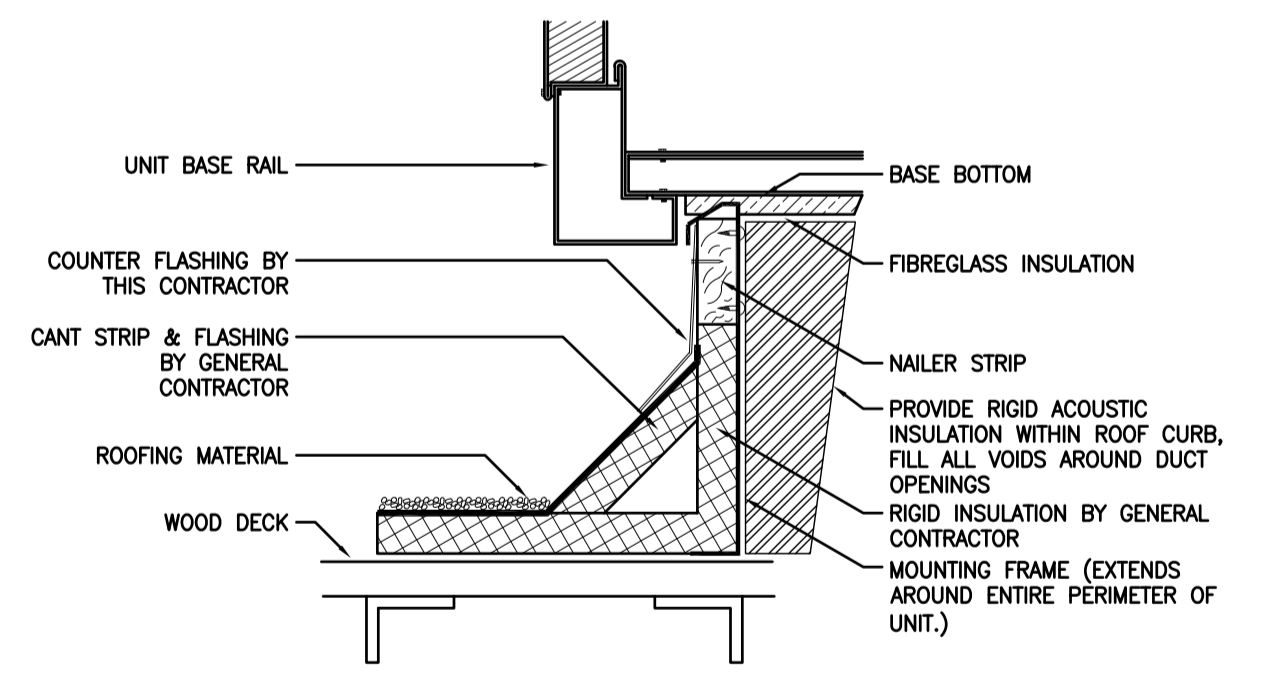
2 HEATING COIL (HC-1 & 2) PIPING SCHEMATIC - DEMO  
M400 SCALE: N.T.S.



8 ROOF MOUNTED EXHAUST FAN DETAIL  
M400 SCALE: N.T.S.



9 ROOFTOP UNIT DETAIL - F-17 DOWN DISCHARGE W/ CURB  
M400 SCALE: N.T.S.



10 ROOF CURB DETAIL  
M400 SCALE: N.T.S.

0	ISSUED FOR TENDER	2020.05.27
Revision/Revisión	Description/Description	Date/Date

Client/client

**CORRECTIONAL SERVICE CANADA**

Project title/Titre du projet  
**CHILLIWACK CORRECTIONAL CENTRE  
CHILLIWACK, BC**

**FLAT ROOF REPAIR AND  
HVAC REPLACEMENT**

Consultant Signature Box Only

Designed by/Concept par  
**SH / LB**

Drawn by/Dessiné par  
**JW / SH**

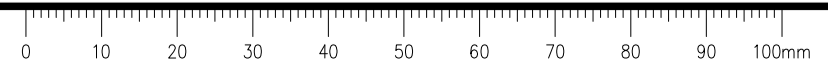
PWGSC Project Manager/Administrateur de Projets TPSGC  
**KEN WENDT**

PWGSC, Regional Manager, Architectural and Engineering Services/  
Gestionnaire régional, services d'architecture et de génie, TPSGC  
**PREETIPAL PAUL**

Drawing title/Titre du dessin

**MECHANICAL SCHEMATICS  
AND DETAILS**

Project No./No. du projet <b>R.097948.001</b>	Sheet/Feuille <b>M400</b>	Revision no./ Lo. Révision no. <b>0</b>
--	------------------------------	--







**FAN SCHEDULE**

EXISTING UNIT TAG	NEW UNIT TAG	SERVICE	TYPE	AIR FLOW L/S	EXT. STATIC PRESSURE Pa	ELECTRICAL (V/PH/Hz)	BLOWER MOTOR KW	NOTES	MAX UNIT WEIGHT kg	BASIS OF DESIGN		ACCEPTABLE MATERIALS
										MAKE	MODEL	
F-9	F-9	COORDINATOR ROOM E/A	ROOF MOUNTED DOWNBLAST	176	92	120/1/60	0.030	1	20	GREENHECK	G-090-G	TWIN CITY FAN, CANARM
F-15	F-15	LEVEL-2 S/A	ROOF MOUNTED	590	154	120/1/60	0.8	1,2,3	204	ENGINEERED AIR	LM1	GREENHECK, HAAKON
F-16	F-16	LEVEL-1 S/A	ROOF MOUNTED	985	217	120/1/60	2 @ 0.8	1,2,3,5	308	ENGINEERED AIR	LM1	GREENHECK, HAAKON
MUA-1	F-17	LEVEL-1 WEST WING S/A	ROOF MOUNTED	566	162	120/1/60	0.8	1,2,4,5,6	250	ENGINEERED AIR	LM1	GREENHECK, HAAKON

1. REFER TO SPECIFICATIONS FOR SUPPLEMENTAL REQUIREMENTS.  
 2. -DIRECT DRIVE EC MOTOR(S) W/ 0-10VDC INPUT AND INTEGRAL POT; BACKWARD CURVED PLENUM FAN(S);  
 -SINGLE STAGE 100MM PLEATED MERV-13 FILTER IN METAL FRAMES W/ MAGNEHELIC FILTER GAUGE;  
 -HINGED ACCESS DOORS WITH LEVER LOCK HANDLES, AIR TIGHT GASKET  
 -2-POSITION MOTORIZED INLET DAMPERS; INTAKE HOOD W/ BIRD SCREEN;  
 -INTEGRAL STARTER; SINGLE POINT POWER CONNECTION
3. 1.93m BASE RAILS TO SPAN JOISTS. ADDITIONAL SUPPORT BY STRUCTURAL.  
 4. C/W PREFABRICATED ROOF-CURB. CURB INCLUDED IN UNIT WEIGHT. DOWN DISCHARGE TO MATCH EXISTING ROOF OPENING.  
 5. C/W 2-POSITION MOTORIZED RETURN DAMPERS W/ MIXING SECTION.  
 6. BALANCE F-17 TO 25% O/A. UNIT CAPABLE OF 100% O/A FOR ECONOMIZER COOLING.

**CIRCULATION PUMP SCHEDULE**

TAG#	LOCATION	SERVICE	TYPE	CAPACITY L/S (GPM)	HEAD kPa (FT)	FLUID		MOTOR POWER W	ELECTRICAL	NOTES	BASIS OF DESIGN		ACCEPTABLE MATERIALS
						TYPE	TEMP °C (°F)				MANUFACTURER	MODEL	
P-3	MECH RM	HC-1	IN-LINE	0.315 (5.0)	22 (7)	WATER	76.7 (170)	45	115/1/60	1,2	GRUNDFOS	ALPHA1 15-55F	TACO, ARMSTRONG, BELL GOSSETT
P-4	MECH RM	HC-2	IN-LINE	0.175 (2.6)	21 (7)	WATER	76.7 (170)	45	115/1/60	1,2	GRUNDFOS	ALPHA1 15-55F	TACO, ARMSTRONG, BELL GOSSETT
P-7	MECH RM	HC-4	IN-LINE	0.16 (2.6)	21 (7)	WATER	76.7 (170)	45	115/1/60	1,2	GRUNDFOS	ALPHA1 15-55F	TACO, ARMSTRONG, BELL GOSSETT

- NOTES:  
 1. REFER TO MECHANICAL SPECIFICATIONS FOR SUPPLEMENTAL REQUIREMENTS.  
 2. INTEGRAL CONTROLLER. CONSTANT SPEED.

**HEATING COIL SCHEDULE**

TAG	HEATING CAPACITY KW	AIR				FLUID					HEADER SIZE MM	NO. OF ROWS	FIN SPACING FPI	MAX. AIR VELOCITY M/S	DIMENSIONS H x L MM	NOTES	BASIS OF DESIGN		ACCEPTABLE MATERIALS
		FLOW L/S	EAT °C	LAT °C	P.D. PA	FLOW L/S	EMT °C	LWT °C	P.D. KPA	TYPE							MAKE	MODEL	
HC-1	48.3	991	-13	27.1	31	0.315	76.7	39.5	4.3	WATER	25	2	14	2.9	456x762	1,2,3	ENG AIR	-	HEATCRAFT, GREENHECK
HC-2	26.8	590	-13	24.3	31	0.175	76.7	39.6	3.9	WATER	20	3	8	3.2	304x610	1,2	ENG AIR	-	HEATCRAFT, GREENHECK
HC-4	27.7	566	-11.1	29.5	31	0.16	76.7	35.7	3.1	WATER	25	2	14	1.9	508x610	1,2	ENG AIR	-	HEATCRAFT, GREENHECK

- NOTES:  
 1. REFER TO SPECIFICATIONS FOR SUPPLEMENTAL REQUIREMENTS  
 2. IN-DUCT HEATING COIL  
 3. HEATING COIL IS LOCATED WITHIN ROOF TRUSSES. CONTRACTOR TO MODIFY DIMENSIONS FOR EXACT FIT AND NOT EXCEED MAXIMUM AIR VELOCITY.

**CONTROL VALVE SCHEDULE**

TAG No.	SERVICE	TYPE	MAX. P.D. PA	SIZE	CV	NOTES
CV-HC1	HEATING COIL HC-1	3-WAY MODULATING	25	SEE SCHEMATIC	-	1, 2, 3
CV-HC2	HEATING COIL HC-2	3-WAY MODULATING	25	SEE SCHEMATIC	-	1, 2, 3
CV-HC4	HEATING COIL HC-4	3-WAY MODULATING	25	SEE SCHEMATIC	-	1, 2, 3

- NOTES:  
 1. REFER TO SPECIFICATIONS FOR SUPPLEMENTAL REQUIREMENTS.  
 2. C/W ELECTRIC ACTUATOR, AND ALL HARDWARE FOR CONNECTION TO DDC.  
 3. FAIL OPEN

**ROOF DRAIN SCHEDULE**

TAG No.	TYPE	DOME SIZE MM	OUTLET MM	NOTES	BASIS OF DESIGN		ACCEPTABLE MATERIALS
					MAKE	MODEL	
RD-1	GENERAL PURPOSE ROOF DRAIN - LOW PROFILE DOME	215	75	1	JR SMITH	1330Y-C	WATTS, ZURN, MIFAB

- NOTES:  
 1. C/W UNDERDECK CLAMP

Revision/Revisions	Description/Description	Date/Date
0	ISSUED FOR TENDER	2020.05.27

Client/client

**CORRECTIONAL SERVICE CANADA**

Project title/Titre du projet  
**CHILLIWACK CORRECTIONAL CENTRE CHILLIWACK, BC**

**FLAT ROOF REPAIR AND HVAC REPLACEMENT**

Consultant Signature Box Only

Designed by/Concept par  
**SH / LB**

Drawn by/Dessine par  
**JW / SH**

PWGSC Project Manager/Administrateur de Projets TPSGC  
**KEN WENDT**

PWGSC, Regional Manager, Architectural and Engineering Services/  
 Gestionnaire régional, services d'architecture et de génie, TPSGC  
**PREETIPAL PAUL**

Drawing title/Titre du dessin

**MECHANICAL EQUIPMENT SCHEDULES**

Project No./No. du projet	Sheet/Feuille	Revision no./La Révision no.
<b>R.097948.001</b>	<b>M500</b>	<b>0</b>

