

Stantec Consulting Ltd.
400-1331 Clyde Avenue
Ottawa, Ontario
K2C 3G4

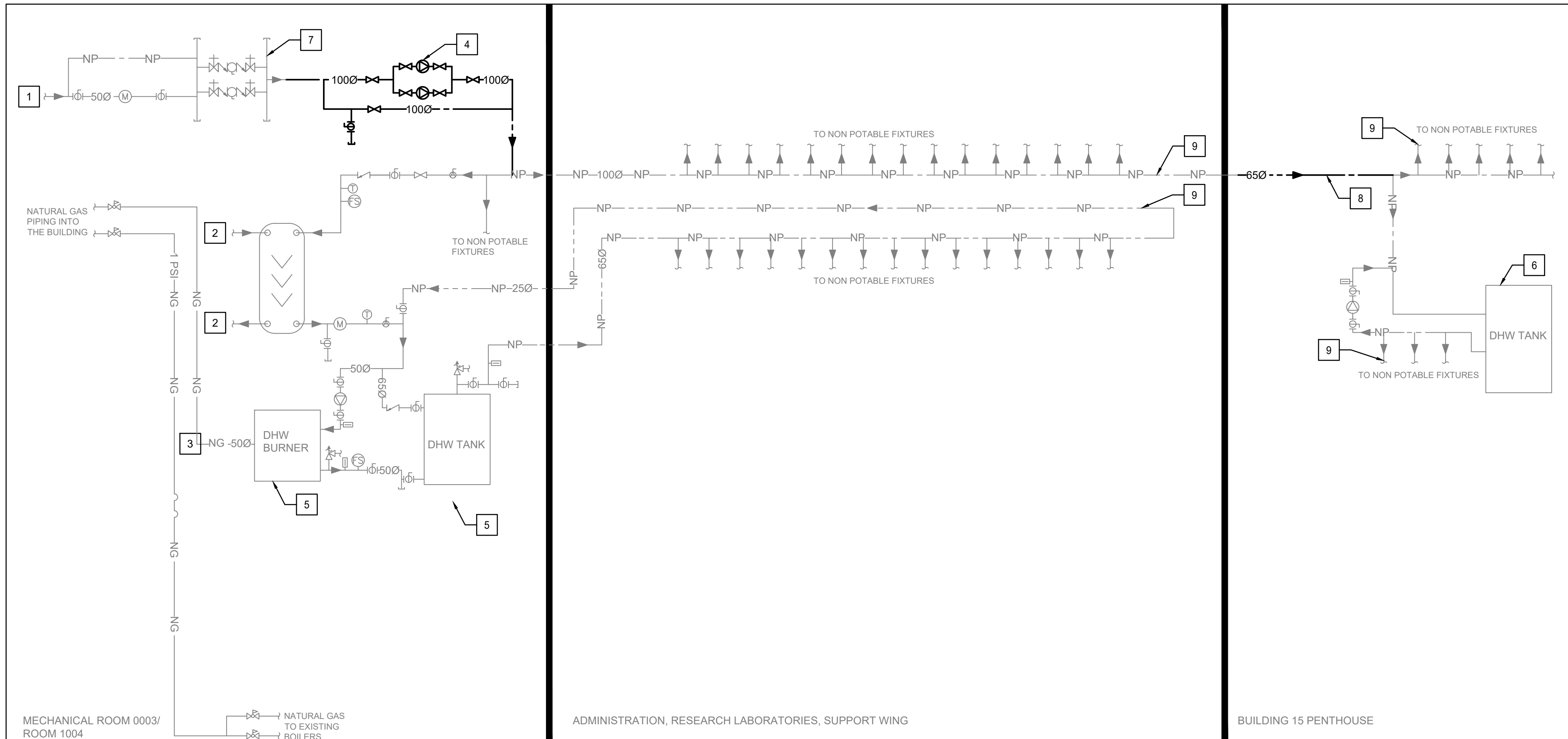
File: London Cross Connections Control Measures Project
Addendum No: 2
Date: August 11, 2020
Owner: PSPC
Contract No. R.106155.001

This addendum is to be read with and constitutes part of the tender document.

Details of the Addendum:

Drawings M100 and M104 have been updated as per attached.

END



DEMOLITION DRAWING NOTES

- 1 DOMESTIC WATER ENTRY POINT IN SOUTH LAB WING BASEMENT.
- 2 EXISTING SUPPLY AND RETURN PROCESS WATER INTO HEAT EXCHANGER TO REMAIN.
- 3 EXISTING NATURAL GAS LINE TO DOMESTIC WATER HEATER TO REMAIN.
- 4 DEMOLISH EXISTING DUPLEX INLINE BOOSTER PUMP SET C/W PIPING, STRAINERS, CHECK VALVES, SHUTOFF VALVES, FLEXIBLE CONNECTIONS, SUPPORTS, AND OTHER ACCESSORIES. REFER TO ELECTRICAL DRAWINGS FOR POWER DISCONNECTION.
- 5 EXISTING DOMESTIC WATER HEATER AND ASSOCIATED STORAGE TANK TO REMAIN.
- 6 EXISTING DOMESTIC ELECTRIC WATER HEATER TO REMAIN.
- 7 EXISTING BACKFLOW PREVENTER AT WATER ENTRY TO REMAIN.
- 8 DEMOLISH PIPING SEGMENT AT BUILDING 15 DOMESTIC WATER ENTRANCE POINT AS INDICATED ON DRAWING M110.
- 9 REFER TO PLAN VIEWS FOR BRANCH PIPING DEMOLITION TO ACCOMMODATE TIE-INS TO NEW PIPING.

NEW DRAWING NOTES

- 1 PROVIDE NEW TRIPLEX INLINE BOOSTER PUMP SET C/W REDUCERS, STRAINER, CHECK VALVES, SHUT-OFF VALVES, FLEXIBLE CONNECTIONS, FITTINGS, SUPPORTS, AND OTHER ACCESSORIES REQUIRED BY MANUFACTURER. REFER TO PUMP DETAIL FOR MORE DETAILS.
- 2 PROVIDE NEW REDUCED PRESSURE (RP) BACKFLOW PREVENTER.
- 3 INSTALL NEW POTABLE WATER LINE SERVING POTABLE WATER FIXTURES AND NEW WATER HEATER.
- 4 PROVIDE NEW NATURAL GAS WATER HEATER (WH-1) SERVING POTABLE FIXTURES.
- 5 PROVIDE NEW HOT WATER CIRCULATION PUMP.
- 6 PROVIDE NEW EXPANSION TANK ON THE DCW SIDE.
- 7 PROVIDE NEW MIXING VALVE ASSEMBLY FOR WATER TEMPERATURE CONTROL. REFER TO DETAIL 5-M113 FOR REQUIRED ASSEMBLY COMPONENTS.
- 8 INSTALL NEW POTABLE WATER PIPING THROUGHOUT THE CAMPUS. CONNECT TO AND REUSE EXISTING BRANCH PIPING AS NOTED ON PLAN VIEWS.
- 9 PROVIDE NEW ELECTRIC WATER HEATER (WH-2) SERVING POTABLE FIXTURES.
- 10 PROVIDE NEW ISOLATION VALVES AT EACH NEW DCW, DHW, DTW BRANCH OFF PIPING MAIN. PROVIDE NEW WATER HAMMER ARRESTORS ON ALL NEW PIPING BRANCHES FOR EXISTING FIXTURES WHERE EXISTING WATER HAMMER ARRESTORS ARE DEMOLISHED OR SEPARATED FROM FIXTURES AS PART OF SWITCHOVER WORK. INSTALL WATER HAMMER ARRESTORS AS CLOSE TO FIXTURES AS POSSIBLE ON NEW PIPING. INSTALL SUFFICIENT ARRESTORS TO PROTECT FIXTURES.

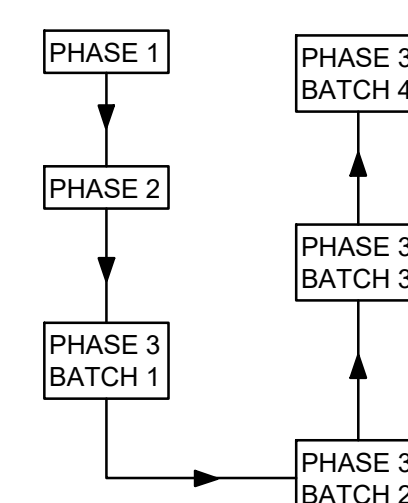
GENERAL NOTES

1. REMOVE AND SALVAGE ALL APPLICABLE THERMOSTATIC MIXING VALVES ASSOCIATED WITH APPLICABLE EMERGENCY FIXTURES AND DELIVER TO DEPARTMENTAL REPRESENTATIVE. READY FOR REUSE.

PHASING NOTES

PHASE 1	INSTALL NEW PIPING MAINS, HOT WATER SYSTEMS, AND PUMPSET WHILE MAINTAINING EXISTING PLUMBING NETWORK. INCLUDE BRANCH ISOLATION VALVES TO PERMIT TIE-INS DURING PHASE 3 OF INDIVIDUAL FIXTURE BRANCHES WITHOUT AFFECTING WATER SERVICE TO BUILDING, AS INDICATED IN DETAIL 6-M112. COMMISSION NEW PUMPSET AND CLEAN NEW PIPING. DO NOT TIE INTO EXISTING PIPING. INSTALL NEW PIPING MAINS AND EQUIPMENT IN BUILDING 15 WHILE MAINTAINING OLD PLUMBING NETWORK THROUGH SERVICE TUNNEL.
PHASE 2	PERFORM SHUTDOWN, COORDINATED MINIMUM 14 DAYS IN ADVANCE WITH DEPARTMENTAL REPRESENTATIVE, AND COMPLETE PIPING SWITCHOVER FROM EXISTING PUMPSET TO NEW PUMPSET. DEMOLISH EXISTING PUMPSET.
PHASE 3	INSTALL PIPING IN-ROOM AND PERFORM TIE-INS FOR FIXTURES IN BATCHES AS INDICATED IN BATCH TABLE BELOW. SCHEDULE OF EACH BATCH TIE-IN IS TO BE COORDINATED MINIMUM 14 DAYS IN ADVANCE WITH DEPARTMENTAL REPRESENTATIVE. TIE-IN ACTIVITIES TO BE SEQUENCED AS SHOWN IN DETAIL 6-M112. COMMISSION FIXTURES AFTER TIE-INS ARE COMPLETE. REPEAT PHASE 3 FOR EACH BATCH OF FIXTURES.

CONSTRUCTION PHASING DIAGRAM

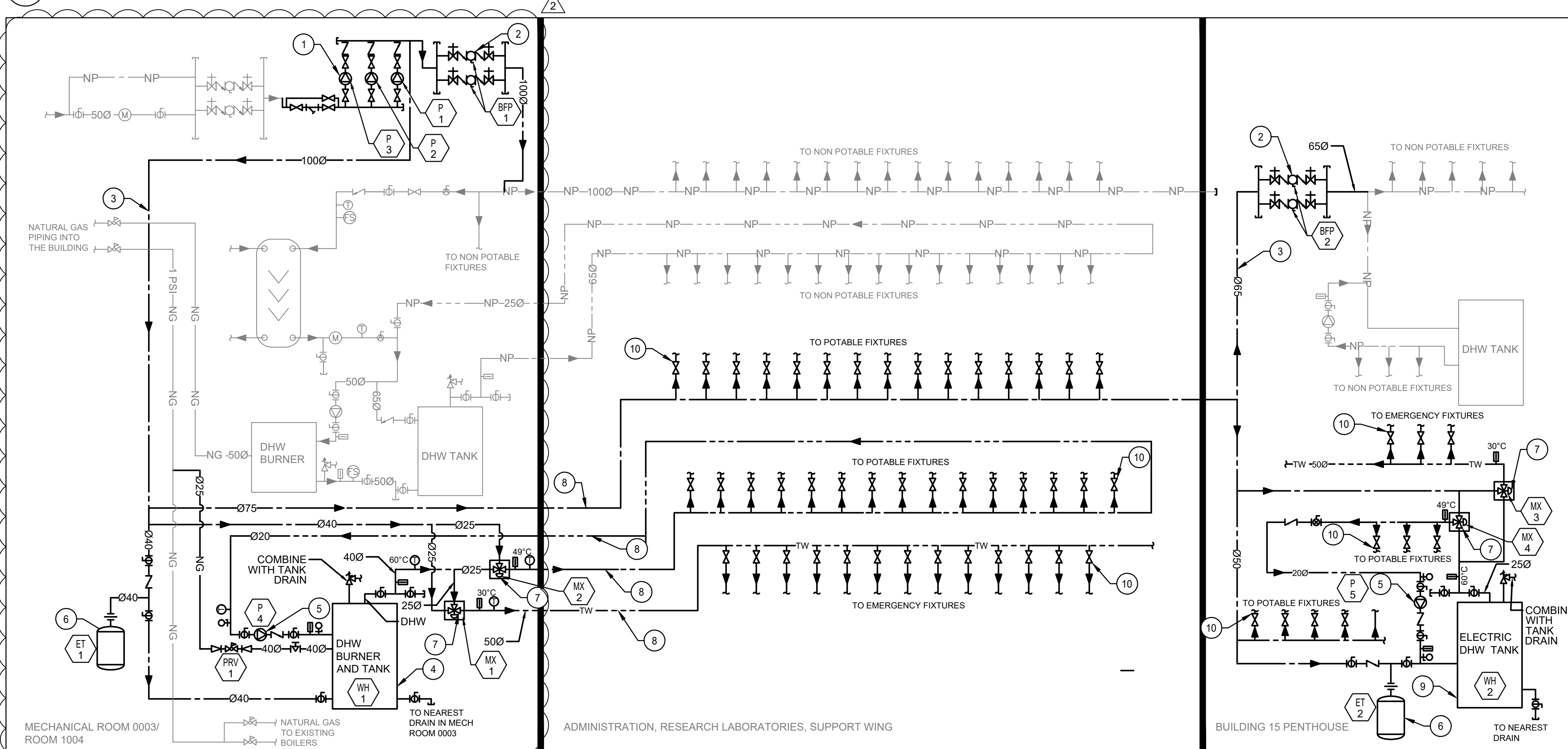


PHASING BATCHES

BATCH	ROOMS
1	009, 010, 106, 111, 118, 119, 120, 121, 127, 129, 130, 132, 133, 206, 211, 218, 219, 220, 221, 227, 229, 230, 232, 233
2	1002, 1009, 1014, 1017, 1018, 2002, 2005, 2008, 2013, 2018, 2022, 2025
3	1026, 1025, 1031, 1032, 1035, 1041, 1045, 1063, 1065, 1068, 1073, 1079, 1094, 1102, 1112, 1121
4	1201, 1203, 1205, 1208, 1210, 1209, 1211, 1215

1 PLUMBING SCHEMATIC - DEMOLITION

M100 SCALE: N.T.S.

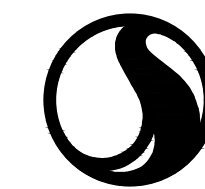


2 PLUMBING SCHEMATIC - NEW

M100 SCALE: N.T.S.



Public Works and
Government Services Canada
Travaux publics et
Services gouvernementaux Canada



Stantec

Stantec Consulting Ltd.
400 - 1331 Clyde Avenue
Ottawa ON, K2C 3G4
Tel: (613) 722-4420
www.stantec.com

02	ISSUED FOR ADDENDUM 2	2020.08.11
01	ISSUED FOR TENDER	2020.05.29
revision		date

Do not scale drawings.
Verify all dimensions and conditions on site and immediately
notify the Departmental Representative of all discrepancies.



A Detail No.
No. du détail
B drawing no. - where detail required
dessin no. - où détail exigé
C drawing no. - where detailed
dessin no. - où détaillé

project title
titre du projet
LONDON ONTARIO
PUBLIC SERVICES PROCUREMENT CANADA
1391 SANDFORD STREET
LONDON, ON N5V 4T3

**LONDON CROSS CONNECTION
CONTROL MEASURES**

drawing title
titre du dessin
**MECHANICAL
PLUMBING SCHEMATIC
DEMO AND NEW**

drawn by
dessiné par **ZEYAD ABDELAZEZ**

designed by
conc par **CARY MCGEE**

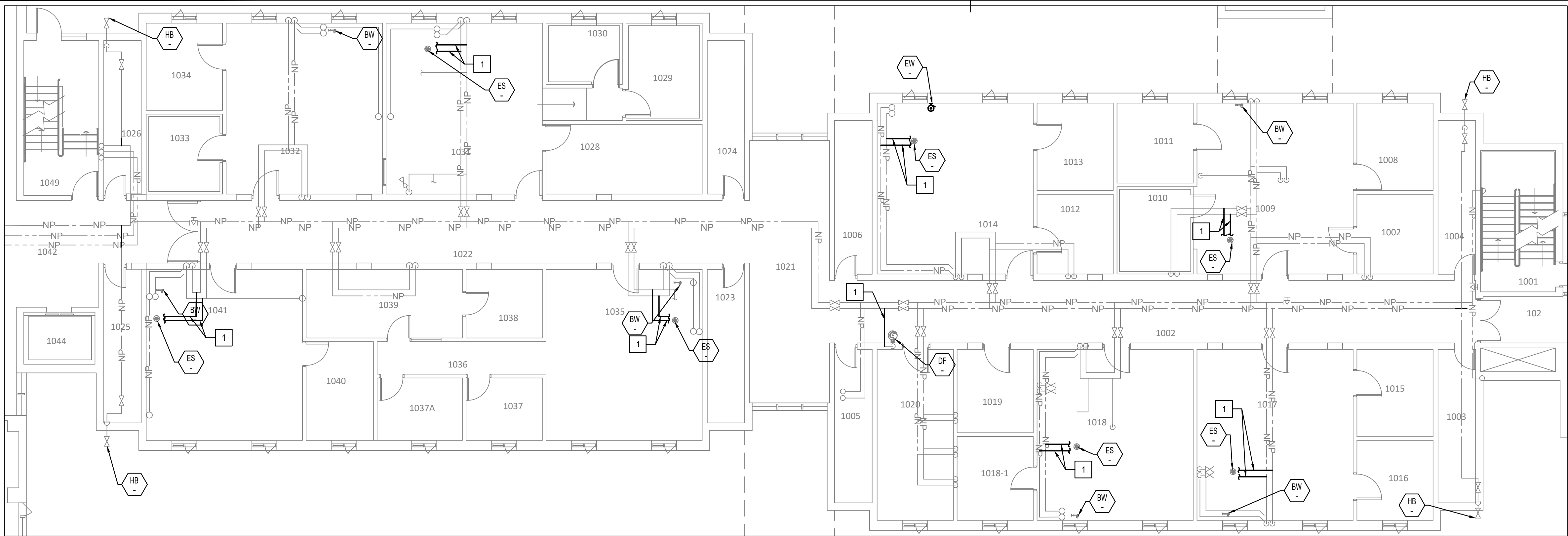
approved by
approuvé par **DAVID YIN**

bid
offre **DEBI BANNON** project manager
administrateur de projets

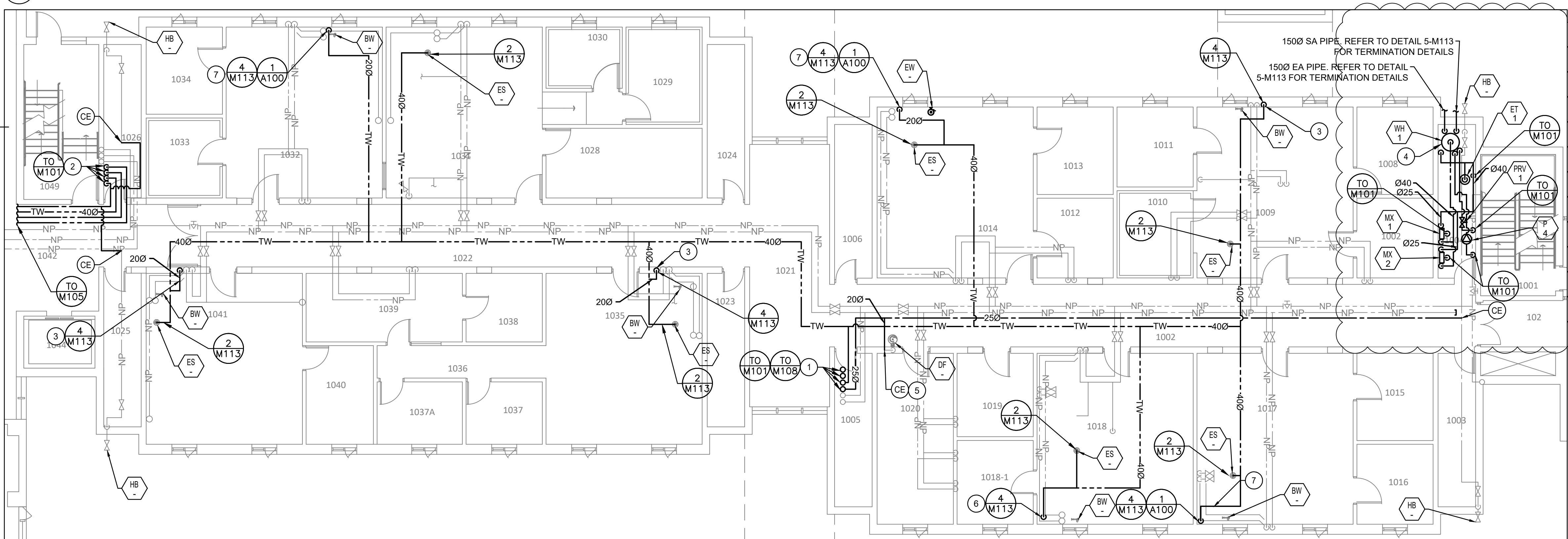
project date
date du projet **2020-05-29**

project no.
no. du projet **R.106155.001**

drawing no.
dessiné no. **M100**



1 FIRST PART FLOOR PLAN PLUMBING - DEMOLITION
M104 SCALE: 1:100



2 FIRST PART FLOOR PLAN PLUMBING - NEW
M104 SCALE: 1:100

DEMOLITION DRAWING NOTES

1 DEMOLISH EXISTING DCW AND DHW PIPING SEGMENTS AS INDICATED. MAINTAIN EXISTING PIPING FOR REUSE AND RECONNECTION.

GENERAL NOTES

1. AFTER NEW PIPING IS INSTALLED AND TIED IN, REMOVE OLD LABELS AND RELABEL OLD DOMESTIC WATER PIPING THROUGHOUT, WITH LABEL SPACING AND CONTENT TO REQUIREMENTS OF SPECIFICATIONS.

2. ALL TAGGED PLUMBING FIXTURES ARE TO BE CONNECTED TO NEW POTABLE WATER PIPING SYSTEM. REFER TO DETAILS AND NOTES FOR TIE-IN POINTS AND CONFIGURATIONS, AND FOR DEMOLITION SCOPE.

NEW DRAWING NOTES

1 NEW 500 DCW, 250 DHW, 200 DHWR, 400 DTW PIPING UP TO SECOND FLOOR AND DOWN TO BASEMENT IN MECHANICAL CHASE. INSTALL BRANCH PIPING TO FIRST FLOOR WITHIN FINISHED CEILING.

2 NEW 650 DCW, 250 DHW, 200 DHWR, 200 DTW PIPING DOWN TO BASEMENT IN MECHANICAL CHASE. INSTALL BRANCH PIPING TO FIRST FLOOR WITHIN FINISHED CEILING.

3 NEW TW LINE TO BE ROUTED WITHIN EXISTING RECESSED IN WALL PIPE CHASE. REFER TO SCHEDULES AND DETAILS FOR MORE INFORMATION ON CONNECTION AND PATCHING.

4 REFER TO 3-M112 FOR CONCRETE PAD DETAIL.

5 CONNECT EXISTING FIXTURE TO NEW DHW AND/OR DCW PIPING IN THE CEILING SPACE. REMOVE AND REINSTATE CEILING TO ACCOMMODATE PIPING CONNECTION. REFER TO PHASING NOTES AND DETAIL 6-M112 FOR DISCONNECTION/RECONNECTION DETAILS. DEMOLISH BRANCH PIPING UP TO CONCEALED DROP FOR FIXTURE. TIE IN NEW PIPING TO EXISTING DROPS. WHERE PIPE DROPS ARE EXPOSED, DEMOLISH AND REPLACE DROPS.

6 NEW TW LINE TO BE ROUTED WITHIN EXISTING DRYWALL ENCLOSURE. REFER TO SCHEDULES AND DETAILS FOR MORE INFORMATION ON CONNECTION AND PATCHING.

7 NEW TW LINE TO BE ROUTED WITHIN NEW PIPE CHASE. REFER TO SCHEDULES AND DETAILS FOR MORE INFORMATION ON CONNECTION AND PATCHING.

02	ISSUED FOR ADDENDUM 2	2020.08.11
01	ISSUED FOR TENDER	2020.05.29
revision		date

Do not scale drawings.
Verify all dimensions and conditions on site and immediately
notify the Departmental Representative of all discrepancies.

A	Detail No.
B	No. du détail
C	drawing no. - where detail required dessin no. - où détail exigé
C	drawing no. - where detailed dessin no. - où détaillé

project title
titre du projet
LONDON ONTARIO
PUBLIC SERVICES PROCUREMENT CANADA
1391 SANDFORD STREET
LONDON, ON N5V 4T3
LONDON CROSS CONNECTION
CONTROL MEASURES

drawing title
titre du dessin
MECHANICAL
FIRST FLOOR PLAN
PLUMBING - DEMO AND NEW

drawn by
dessiné par
ZEYAD ABDELAZEZ

designed by
conc par
CARY MCGEE

approved by
approuvé par
DAVID YIN

bid
offre
DEBI BANNON

project manager
administrateur
de projets

project date
date du projet
2020-05-29

project no.
no. du projet
R.106155.001

drawing no.
dessiné no.
M104