



RETURN BIDS TO:

RETOURNER LES SOUMISSIONS À:

Bid Receiving Public Works and Government
Services Canada/Réception des soumissions Travaux
publics et Services gouvernementaux Canada
Pacific Region

**SOLICITATION AMENDMENT
MODIFICATION DE L'INVITATION**

The referenced document is hereby revised; unless otherwise
indicated, all other terms and conditions of the Solicitation
remain the same.

Ce document est par la présente révisé; sauf indication contraire,
les modalités de l'invitation demeurent les mêmes.

Comments - Commentaires

Vendor/Firm Name and Address
Raison sociale et adresse du
fournisseur/de l'entrepreneur

Issuing Office - Bureau de distribution
Public Works and Government Services Canada - Pacific
Region
401 - 1230 Government Street
Victoria, B. C.
V8W 3X4

Title - Sujet Valve components	
Solicitation No. - N° de l'invitation EZ108-202124/A	Amendment No. - N° modif. 004
Client Reference No. - N° de référence du client EZ108-202124	Date 2020-08-12
GETS Reference No. - N° de référence de SEAG PW-\$VIC-260-7981	
File No. - N° de dossier VIC-9-42212 (260)	CCC No./N° CCC - FMS No./N° VME
Solicitation Closes - L'invitation prend fin at - à 02:00 PM on - le 2020-09-01	Time Zone Fuseau horaire Pacific Daylight Saving Time PDT
F.O.B. - F.A.B. Plant-Usine: <input type="checkbox"/> Destination: <input checked="" type="checkbox"/> Other-Autre: <input type="checkbox"/>	
Address Enquiries to: - Adresser toutes questions à: Mountford, Elsie-May	Buyer Id - Id de l'acheteur vic260
Telephone No. - N° de téléphone (236) 464-3238 ()	FAX No. - N° de FAX () -
Destination - of Goods, Services, and Construction: Destination - des biens, services et construction:	

Instructions: See Herein

Instructions: Voir aux présentes

Delivery Required - Livraison exigée	Delivery Offered - Livraison proposée
Vendor/Firm Name and Address Raison sociale et adresse du fournisseur/de l'entrepreneur	
Telephone No. - N° de téléphone Facsimile No. - N° de télécopieur	
Name and title of person authorized to sign on behalf of Vendor/Firm (type or print) Nom et titre de la personne autorisée à signer au nom du fournisseur/ de l'entrepreneur (taper ou écrire en caractères d'imprimerie)	
Signature	Date

SOLICITATION AMENDMENT 004 IS RAISED TO PROVIDE QUESTIONS AND ANSWERS AND MAKE THE FOLLOWING REVISIONS AS FOLLOWS:

- Question 1:** What is the maximum operating pressure and temperature for the valves?
- Answer 1:** Normal operating pressure and temperature is 0-40 Psi. All components must be rated to 150 Psi Max and the normal operating temperature is 52 Degrees F. (See Requirement part 2.a.)
- Question 2:** What media is being handled in this requirement? (e.g. Lake water? Salt water?)
- Answer 2:** Sea water (See Requirement part 1.a.)
- Question 3:** Is this for an industrial or municipal application?
- Answer 3:** Industrial (See Requirement part 1.b.)
- Question 4:** Is it going on steel OD's for both the DJ and coupling?
- Answer 4:** Yes 20" OD Stainless Steel. (See Requirement part 1.b.)
- Question 5:** Is AWWA C228 Class flat faced flange ok (rated to 150 psi)? This flange matches the Class 150 bolt pattern. ANSI 16.5 Class 150 flanges are not stainless steel.
- Answer 5:** No. The flanged faces of components are to be raised face ANSI Class 150. We are not looking for loose flanges. (See Requirement part 3. A., b., and d.) ANSI Class 150 flanged components are available in Stainless Steel.
- Question 6:** In the coupling spec it also mentions Class 150 flange. Are they looking for a coupling or flanged coupling adapter?
- Answer 6:** Coupling requirements have been clarified (See Requirement part 3.b.)
- Question 7:** The center ring length is listed 7" +/- 1/16". Our couplings come in a 7" length, but we have not studied if we can meet that tolerance. Is that ok?
- Answer 7:** Yes, 7" is ideal, tolerance has been clarified. (See Requirement part 3.c.)
- Question 8:** Do the renewable seats need to be soft seated or metal seated?
- Answer 8:** Seat Materials have been clarified. (See Requirement part 3.a. and 3.d.)
- Question 9:** Please explain the need behind the drawn assembly (19-107) so I can propose a proper solution.
- Answer 9:** The drawing was provided to indicate the general layout of the desired 4 components. Additional Photographs have now been provided as well. (See Requirement Appendix 1 and Appendix 2.)
- Question 10:** Are the requested knife gates unidirectional or bidirectional shutoff?

- Answer 10:** Unidirectional (See Requirement part 3.d.)
- Question 11:** **Do the valves have flat face flange connections?**
- Answer 11:** No, all flanged components have raised face flanges. (See Requirement part 3. A., b., and d.)
- Question 12:** **Are the knife gate valves, check valves, collars and couplings going to be used with the existing pipe? Can you confirm that the end user is going to cut the pipe and weld the new flanges and then attach these parts (valves, couplings and collars) to the welded ANSI 150# flanges?**
- Answer 12:** All the components will be used with the existing pipe and there will be no cutting or welding required as we are not looking for loose flanges. (See Requirement part 1.b and 1.c.)
- Question 13:** **What is the Outside Diameter of the existing pipe?**
- Answer 13:** 20" (See Requirement part 1.b and 1.c.)
- Question 14:** **We are proposing SS316 for Body and Gate, but Yoke will be SS304 per our standard design for such applications. Is this permitted?**
- Answer 14:** Yes (See Requirement part 3.d.)
- Question 15:** **Annex A "compliance table" mentions that the parts must be made from T-316 Stainless Steel while the note at the bottom of the Annex mentioned all Components must be a minimum of Stainless Steel 316L or Higher quality.**
- Could you please clarify this discrepancy and advise which material will be acceptable?**
- Answer 15:** Requirement has been revised. (See Requirement part 3.a. 3.b., 3.c. and 3.d.)
- Question 16:** **All Components must be a minimum of Stainless Steel 316L (CF3M / 316L) or Can we supply 316 (ASTM A351 CF8M/316)**
- Answer 16:** Requirement has been revised. (See Requirement part 3.a. 3.b., 3.c. and 3.d.)
- Question 17:** **Are the rubber gaskets mentioned in the requirement necessary for installation between the pipes and the clamps / fittings?**
- Answer 17:** No, the joints are internal to the coupling adapters and the couplings. (See requirement, part 3.b. and 3.c.)

DELETE: ANNEX A IN ITS ENTIRETY

INSERT: ANNEX A REQUIREMENT

1. Background:

- a. The Esquimalt Graving Dock is the largest non-military hard bottom dry dock on the west coast of the Americas. The Pumphouse contains pumps and piping systems used to dewater

the seawater from the graving dock basin. The system consists of three main de-watering pumps and two auxiliary de-watering pumps. The auxiliary pumps are used to strip the last of the water from the dock after the main pumps have lost suction.

- b. The information below details the components required for the industrial marine auxiliary pump piping modifications required for the Esquimalt Graving Dock Pump House. The existing piping system is 20" OD Type 316 Stainless steel piping connected to the 4 components that need to be replaced. The system has experienced premature corrosion failures in the 4 components due to the mix of component materials, the sea water being pumped and the marine environment of the facility. The intent is to move to an all stainless steel configuration to increase life expectancy and reduce downtime and maintenance costs.
- c. See attached Drawing, Appendix 1, "Pump House Modification Layout" for general arrangement of the various components and Appendix 2, "Photographs of existing components and layout". It is our intent to reuse the existing 20" Dia. Type 316 stainless steel piping while replacing each of the 20" "blue or turquoise" fittings in the photographs.

2. Standards:

- a. All components must meet the requirements of ASME B16.5-2017: Pipe Flanges and Flanged Fittings, rating class designation 150 for size National Pipe Standard 20" Dia. pipe. (Note this is sometimes referred to as ANSI Class 150). Components can also meet the requirements of the equivalent AWWA standards. The American National Standards Institute (ANSI) has certified both the ASME Standards and the AWWA standards. All components must be rated for 150 psi max. with a normal operating pressure of 0-40 psi and normal working temperature of 52 Degrees F.

3. Technical Data:

For each mandatory technical criterion, the Bidder must indicate whether the products proposed are compliant or not compliant by checking the appropriate box.

Item	Component	Description	Quantity	Compliant		Bid Ref #
				Yes	No	
a.	Check Valves	<p>Swing Check Valve 20"</p> <p>Type -316 stainless steel construction including gland and clapper</p> <p>ANSI Class 150 raised face flanges</p> <p>Type -316 Stainless steel fasteners</p> <p>Renewable seat, seat material to be Type 316 Stainless Steel.</p> <p>A Tom Wheatley Swing Check Valve Model V20-P1-E2-M7-S1-X2111, or equivalent in fit, form and function, will meet this requirement.</p>	2			

b.	Flanged Coupling Adapters	<p>Dismantling Joints 20"</p> <p>T-316 Stainless steel construction</p> <p>Styrene Butadiene Rubber gaskets</p> <p>Type -316 Stainless steel fasteners</p> <p>ANSI Class 150 raised face flange</p> <p>A Robar 20" T316 Stainless Steel Model 7906DJ 150, or equivalent in fit, form and function, will meet this requirement.</p>	2			
.	Couplings	<p>Non-Restraining coupler 20"</p> <p>Type -316 Stainless steel construction</p> <p>Styrene Butadiene Rubber gaskets</p> <p>Type -316 stainless steel fasteners</p> <p>Center sleeve thickness 1/4" minimum to 1/2" maximum is acceptable</p> <p>Center sleeve length must be no more than 7 1/16" long and no less than 6 15/16", i.e. 7" +/- 1/16"</p> <p>A Robar model 1906 20" 316 Stainless Steel coupling, or equivalent in fit, form and function, will meet this requirement.</p>	4			
a.	Knife Gate Valve	<p>20" Uni-Directional Knife Gate valve</p> <p>Type -316 Stainless steel body and gate</p> <p>Removable FKM-FPM (VITON) Seat</p> <p>Stainless Steel Yoke (Either SS 304 or 316 is acceptable)</p> <p>ANSI Class 150 Raised face Flange</p> <p>Bevel Gear actuator with hand-wheel</p> <p>Must remain sealed from 0 to 40 psi.</p> <p>An Orbinox ET Series 20 316 SS Valve, or equivalent in fit, form and function, will meet this requirement.</p>	2			

Solicitation No. - N° de l'invitation
EZ108-202124/A
Client Ref. No. - N° de réf. du client
EZ108-202124

Amd. No. - N° de la modif.
004
File No. - N° du dossier
VIC-9-42212

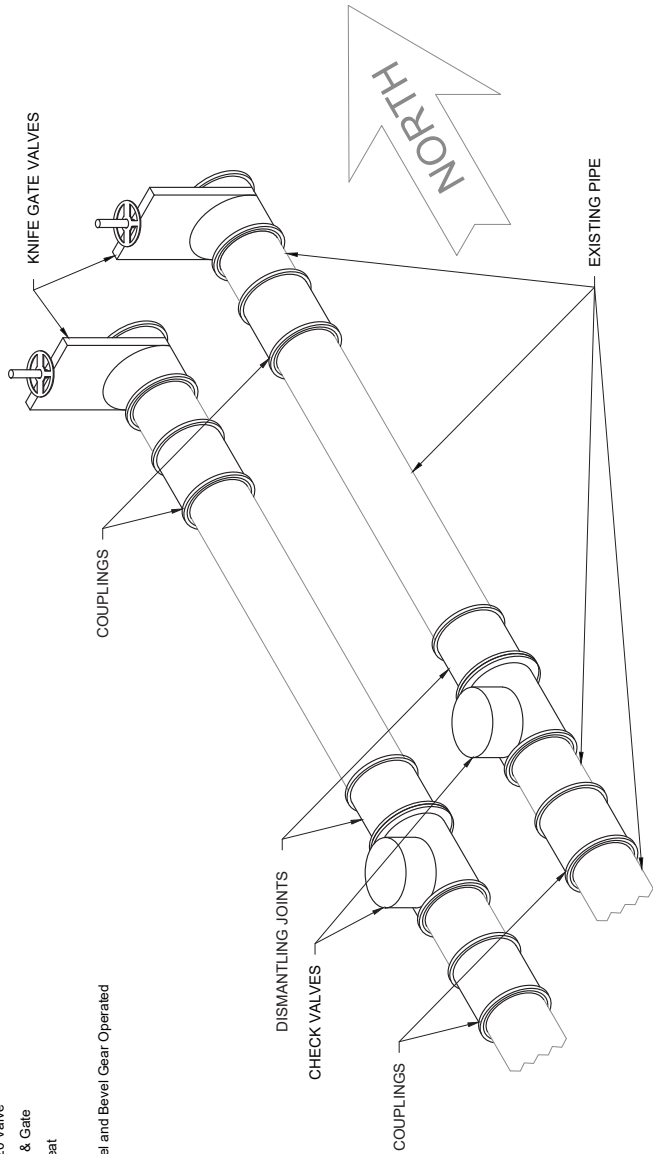
Buyer ID - Id de l'acheteur
vic261
CCC No./N° CCC - FMS No./N° VME

Additional Notes:

1. Cranage and personnel will be available at destination to offload the delivery vehicle at no cost to the shipper.
2. Delivery is to be Delivered Duty Paid (DDP) to the Esquimalt Graving Dock, 825 Admirals Road, Victoria BC, V9A 2P1 Incoterms 2000 for shipments from a commercial contractor.

Appendix 1, Pump House Modification Layout

1	2	3	4	5	6															
<p>Check Valves x2 Valve features:</p> <ul style="list-style-type: none"> • Swing check valve • 20" OD • T-316 stainless steel construction including gland and clapper • ANSI 150 RF flange and bolt pattern • T-316 stainless steel fasteners 	<p>Flanged Coupling Adapters x2 Dismantling joint features:</p> <ul style="list-style-type: none"> • 20" OD • T-316 stainless steel construction • ANSI 150 flange and bolt pattern • SBR rubber gaskets or equivalent • T-316 stainless steel fasteners 	<p>Couplings x4 Non-restraining Coupler features:</p> <ul style="list-style-type: none"> • 20" OD • T-316 stainless steel construction • SBR rubber gaskets or equivalent • T-316 stainless steel fasteners • Center sleeve thickness 1/4" to 1/2" • Center sleeve length of 7" 	<p>Knife Gate Valves x2 Valve features:</p> <ul style="list-style-type: none"> • 20" Knife Gate • 20" SER 20 Valve • 316 Body & Gate • VITON Seat • SS Yoke • Handwheel and Bevel Gear Operated 	<p>Revisions</p> <table border="1"> <thead> <tr> <th>REV</th> <th>ZONE</th> <th>DESCRIPTION</th> <th>DATE</th> <th>BY/APP</th> </tr> </thead> <tbody> <tr> <td>1</td> <td></td> <td>INITIAL SUBMITTAL</td> <td>8-SEP-19</td> <td>W/WHM</td> </tr> <tr> <td>2</td> <td></td> <td>FINAL VALVE ADDED</td> <td>6-SEP-19</td> <td>W/WHM</td> </tr> </tbody> </table>	REV	ZONE	DESCRIPTION	DATE	BY/APP	1		INITIAL SUBMITTAL	8-SEP-19	W/WHM	2		FINAL VALVE ADDED	6-SEP-19	W/WHM	<p>FOR GUIDANCE ONLY</p>
REV	ZONE	DESCRIPTION	DATE	BY/APP																
1		INITIAL SUBMITTAL	8-SEP-19	W/WHM																
2		FINAL VALVE ADDED	6-SEP-19	W/WHM																
<p>Check Valves x2 Valve features:</p> <ul style="list-style-type: none"> • Swing check valve • 20" OD • T-316 stainless steel construction including gland and clapper • ANSI 150 RF flange and bolt pattern • T-316 stainless steel fasteners 	<p>Flanged Coupling Adapters x2 Dismantling joint features:</p> <ul style="list-style-type: none"> • 20" OD • T-316 stainless steel construction • ANSI 150 flange and bolt pattern • SBR rubber gaskets or equivalent • T-316 stainless steel fasteners 	<p>Couplings x4 Non-restraining Coupler features:</p> <ul style="list-style-type: none"> • 20" OD • T-316 stainless steel construction • SBR rubber gaskets or equivalent • T-316 stainless steel fasteners • Center sleeve thickness 1/4" to 1/2" • Center sleeve length of 7" 	<p>Knife Gate Valves x2 Valve features:</p> <ul style="list-style-type: none"> • 20" Knife Gate • 20" SER 20 Valve • 316 Body & Gate • VITON Seat • SS Yoke • Handwheel and Bevel Gear Operated 	<p>Revisions</p> <table border="1"> <thead> <tr> <th>REV</th> <th>ZONE</th> <th>DESCRIPTION</th> <th>DATE</th> <th>BY/APP</th> </tr> </thead> <tbody> <tr> <td>1</td> <td></td> <td>INITIAL SUBMITTAL</td> <td>8-SEP-19</td> <td>W/WHM</td> </tr> <tr> <td>2</td> <td></td> <td>FINAL VALVE ADDED</td> <td>6-SEP-19</td> <td>W/WHM</td> </tr> </tbody> </table>	REV	ZONE	DESCRIPTION	DATE	BY/APP	1		INITIAL SUBMITTAL	8-SEP-19	W/WHM	2		FINAL VALVE ADDED	6-SEP-19	W/WHM	<p>FOR GUIDANCE ONLY</p>
REV	ZONE	DESCRIPTION	DATE	BY/APP																
1		INITIAL SUBMITTAL	8-SEP-19	W/WHM																
2		FINAL VALVE ADDED	6-SEP-19	W/WHM																
<p>Check Valves x2 Valve features:</p> <ul style="list-style-type: none"> • Swing check valve • 20" OD • T-316 stainless steel construction including gland and clapper • ANSI 150 RF flange and bolt pattern • T-316 stainless steel fasteners 	<p>Flanged Coupling Adapters x2 Dismantling joint features:</p> <ul style="list-style-type: none"> • 20" OD • T-316 stainless steel construction • ANSI 150 flange and bolt pattern • SBR rubber gaskets or equivalent • T-316 stainless steel fasteners 	<p>Couplings x4 Non-restraining Coupler features:</p> <ul style="list-style-type: none"> • 20" OD • T-316 stainless steel construction • SBR rubber gaskets or equivalent • T-316 stainless steel fasteners • Center sleeve thickness 1/4" to 1/2" • Center sleeve length of 7" 	<p>Knife Gate Valves x2 Valve features:</p> <ul style="list-style-type: none"> • 20" Knife Gate • 20" SER 20 Valve • 316 Body & Gate • VITON Seat • SS Yoke • Handwheel and Bevel Gear Operated 	<p>Revisions</p> <table border="1"> <thead> <tr> <th>REV</th> <th>ZONE</th> <th>DESCRIPTION</th> <th>DATE</th> <th>BY/APP</th> </tr> </thead> <tbody> <tr> <td>1</td> <td></td> <td>INITIAL SUBMITTAL</td> <td>8-SEP-19</td> <td>W/WHM</td> </tr> <tr> <td>2</td> <td></td> <td>FINAL VALVE ADDED</td> <td>6-SEP-19</td> <td>W/WHM</td> </tr> </tbody> </table>	REV	ZONE	DESCRIPTION	DATE	BY/APP	1		INITIAL SUBMITTAL	8-SEP-19	W/WHM	2		FINAL VALVE ADDED	6-SEP-19	W/WHM	<p>FOR GUIDANCE ONLY</p>
REV	ZONE	DESCRIPTION	DATE	BY/APP																
1		INITIAL SUBMITTAL	8-SEP-19	W/WHM																
2		FINAL VALVE ADDED	6-SEP-19	W/WHM																
<p>Check Valves x2 Valve features:</p> <ul style="list-style-type: none"> • Swing check valve • 20" OD • T-316 stainless steel construction including gland and clapper • ANSI 150 RF flange and bolt pattern • T-316 stainless steel fasteners 	<p>Flanged Coupling Adapters x2 Dismantling joint features:</p> <ul style="list-style-type: none"> • 20" OD • T-316 stainless steel construction • ANSI 150 flange and bolt pattern • SBR rubber gaskets or equivalent • T-316 stainless steel fasteners 	<p>Couplings x4 Non-restraining Coupler features:</p> <ul style="list-style-type: none"> • 20" OD • T-316 stainless steel construction • SBR rubber gaskets or equivalent • T-316 stainless steel fasteners • Center sleeve thickness 1/4" to 1/2" • Center sleeve length of 7" 	<p>Knife Gate Valves x2 Valve features:</p> <ul style="list-style-type: none"> • 20" Knife Gate • 20" SER 20 Valve • 316 Body & Gate • VITON Seat • SS Yoke • Handwheel and Bevel Gear Operated 	<p>Revisions</p> <table border="1"> <thead> <tr> <th>REV</th> <th>ZONE</th> <th>DESCRIPTION</th> <th>DATE</th> <th>BY/APP</th> </tr> </thead> <tbody> <tr> <td>1</td> <td></td> <td>INITIAL SUBMITTAL</td> <td>8-SEP-19</td> <td>W/WHM</td> </tr> <tr> <td>2</td> <td></td> <td>FINAL VALVE ADDED</td> <td>6-SEP-19</td> <td>W/WHM</td> </tr> </tbody> </table>	REV	ZONE	DESCRIPTION	DATE	BY/APP	1		INITIAL SUBMITTAL	8-SEP-19	W/WHM	2		FINAL VALVE ADDED	6-SEP-19	W/WHM	<p>FOR GUIDANCE ONLY</p>
REV	ZONE	DESCRIPTION	DATE	BY/APP																
1		INITIAL SUBMITTAL	8-SEP-19	W/WHM																
2		FINAL VALVE ADDED	6-SEP-19	W/WHM																



FOR GUIDANCE ONLY

PROJECT	EGD PUMP HOUSE REFIT			
CLIENT	PUBLIC SERVICES AND PROCUREMENT CANADA			
TITLE	ESQUIMALT GRAVING DOCK PUMP HOUSE MODIFICATION LAYOUT			
DRAWN BY	DATE	CHECKED BY	DATE	PROJECT NO.
SW	08 SEP 19	DM	15-SEP-19	---
SCALE	NTS	DRAWING NO.	15-107	SHEET NO.
				1 OF 1
				REV
				2

SIZE 11x17

Appendix 2 – Photographs of existing components and layout



Auxiliary Pump Motor

Coupling

Swing Check Valve

Dismantling Joint

EZ108-202124/A - Valve Components



Knife Gate Valve

Coupling

Dismantling Joint

Swing Check Valve

EZ108-202124/A - Valve Components



Swing Check Valve

Dismantling Joint

DELETE: IN ITS ENTIRETY ANNEX B

INSERT: ANNEX B BASIS OF PAYMENT

Pricing offered must be in Canadian Dollars, Applicable Taxes excluded, Delivered Duty Paid to the Esquimalt Graving Dock, 825 Admirals Road, Victoria BC, V9A 2P1. Canadian customs duties and excise taxes included.

Item	Description	Qty	Unit Price (CAD \$)	Total
1	Swing Check Valve	2	\$	\$
2	Flanged Coupling Adapters	2	\$	\$
3	Couplings	4	\$	\$
4	Knife Gate Valve	2	\$	\$
			Sub-total	\$
			GST (5%)	\$
			TOTAL	\$

ALL OTHER TERMS AND CONDITIONS REMAIN UNCHANGED.