



Addendum / Addenda

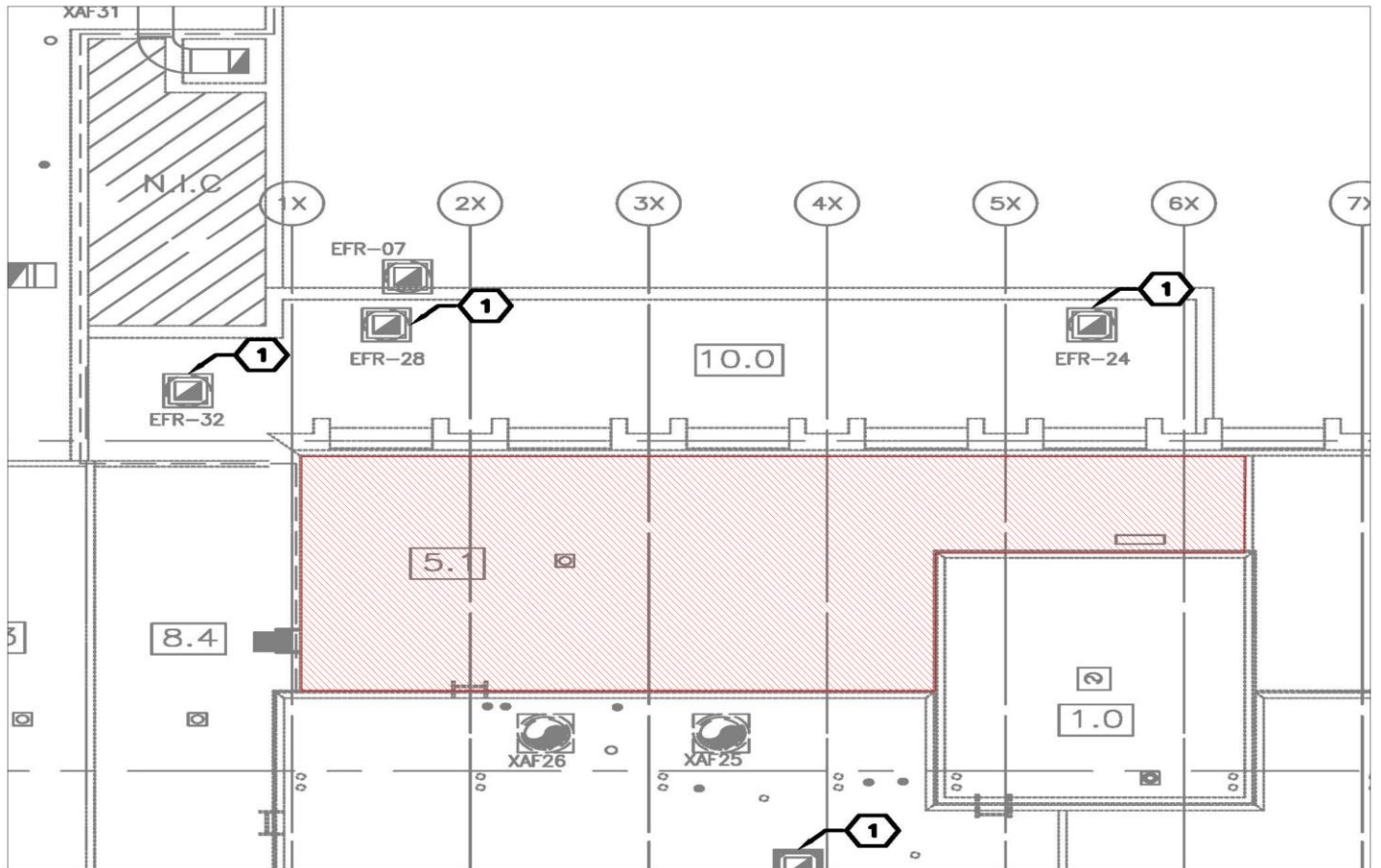
No./N^o
1

Project Description / Description de projet Halifax Roofing Replacement/ Replacement de la toiture à Halifax		
Solicitation No./ No de sollicitation 20-58044	Project No./N ^o de projet HFX01-5848	W.O. No./N ^o d'ordre de travail A1-011344-10
Project Engineer / Ingénieur de projet Barry O'Brien		Date August 17, 2020
Notice: This addendum shall form part of the tender documents and all conditions shall apply and be read in conjunction with the original plans and specifications.		Nota: Cet addenda fait partie intégrale des dossiers d'appel d'offres; toutes les conditions énoncées doivent être lues et appliquées en conjonction avec les plans et les devis originaux.

Good morning,

Please find the following questions / requests for clarification for the noted tender:

1. Will the existing chiller to be removed require de-commissioning/ de-gassing? **This unit has been de-gassed/de-commissioned by NRC already.**
2. Are we to allow for the temporary disconnect, removal and reconnect of small condensing units on sleepers? **Yes, please allow for this.**
3. What is the length of existing refrigeration pipes associated with the AC unit to be removed on DWG A-101? **Your scope will be limited to removing the unit from the wall/recladding, NRC will remove the lines inside the building. This unit will also be decommissioned/de-gassed before you begin work.**
4. The existing rain water drains from the roof are not insulated. How far back from the roof deck are we required to insulate these? What insulation material is required? **See A-102/Detail 5. Let me know if you need any more information.**
5. **Remove section 5.1, in its entirety, from the Scope of Work for this project due to the inability to shut down the cooling towers & temporarily relocate the piping. Each contractor shall exclude roofing costs for this area from their bid (including cladding).**



6. Roofing anchors all have up-to-date certification. NRC will cover any cost of re- certification after re- installation post-roofing scope.
7. Access to the underside of roof drains varies across sections of the roof; some are easily accessible as they are within open ceiling areas or above T-bar; however, a number of drains are located above the drywall ceiling or within a confined crawl space. See following markup for approximate representation of roof drain accessibility. Confined space procedures will need to be in place/followed wherever a drain is located in a confined space. As this is an approximation, unforeseen conditions will be addressed as they arise.

