

**Stantec Consulting Ltd.**  
400-1331 Clyde Avenue  
Ottawa, Ontario  
K2C 3G4

File: London Cross Connections Control Measures Project  
Addendum No: 3  
Date: August 19, 2020  
Owner: PSPC  
Contract No. R.106155.001

---

This addendum is to be read with and constitutes part of the tender document.

---

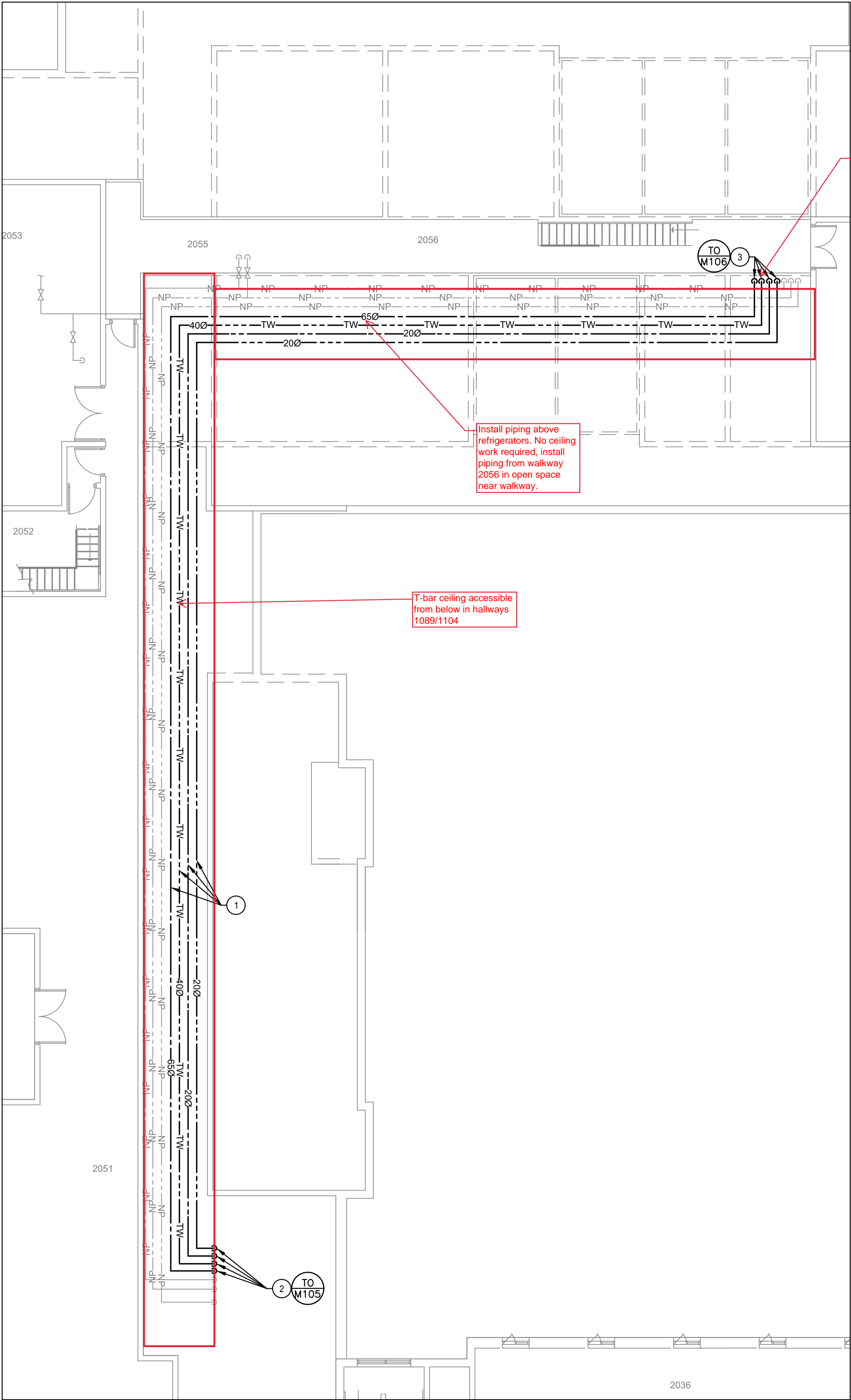
**Details of the Addendum:**

1. A table identifying the type of ceiling in each room to be worked on is attached.
2. Clarifying notes for pipe routing and associated ceiling removals are provided on the attached M109.

**END**

| Room #    | Drawing # | Ceiling Type |        |                         |          |
|-----------|-----------|--------------|--------|-------------------------|----------|
|           |           | T-Bar        | Gypsum | Piping exposed in space | Comments |
| 0003      | M101      |              |        | X                       |          |
| 0005      | M101      |              |        | X                       |          |
| 0006      | M101      |              |        | X                       |          |
| 0008      | M101      |              |        | X                       |          |
| 0002      | M101      | X            |        |                         |          |
| 0011      | M101      |              |        | X                       |          |
| 0012      | M101      | X            |        |                         |          |
| 007       | M102      | X            |        |                         |          |
| 004       | M102      | X            |        |                         |          |
| 010       | M102      | X            |        |                         |          |
| 003       | M102      | X            |        |                         |          |
| 002       | M102      | X            |        |                         |          |
| 107       | M103      | X            |        |                         |          |
| 111       | M103      | X            |        |                         |          |
| 106       | M103      | X            |        |                         |          |
| 105       | M103      | X            |        |                         |          |
| 133       | M103      |              | X      |                         |          |
| 118       | M103      | X            |        |                         |          |
| 119       | M103      | X            |        |                         |          |
| 120       | M103      | X            |        |                         |          |
| 121       | M103      | X            |        |                         |          |
| 1026      | M104      |              |        | X                       |          |
| 1022/1042 | M104      | X            |        |                         |          |
| 1041      | M104      | X            |        |                         |          |
| 1031      | M104      | X            |        |                         |          |
| 1035      | M104      | X            |        |                         |          |
| 1014      | M104      | X            |        |                         |          |
| 1002      | M104      | X            |        |                         |          |
| 1009      | M104      | X            |        |                         |          |
| 1018      | M104      | X            |        |                         |          |
| 1017      | M104      | X            |        |                         |          |
| 1004      | M104      |              |        | X                       |          |
| 1005      | M104      |              |        | X                       |          |
| 1021      | M104      | X            |        |                         |          |
| 1032      | M104      | X            |        |                         |          |
| 1045/1076 | M105      | X            |        |                         |          |
| 1078      | M105      |              | X      |                         |          |
| 1079E     | M105      |              |        | X                       |          |
| 1079      | M105      |              |        | X                       |          |
| 1089      | M105      | X            |        |                         |          |
| 1094      | M105      |              | X      |                         |          |
| 1102      | M106      | X            |        |                         |          |
| 1104      | M106      | X            |        |                         |          |
| 1112      | M106      |              |        | X                       |          |
| 1111      | M106      |              |        | X                       |          |
| 1121      | M106      |              |        | X                       |          |
| 211       | M107      | X            |        |                         |          |
| 207       | M107      | X            |        |                         |          |
| 206       | M107      | X            |        |                         |          |
| 205       | M107      | X            |        |                         |          |
| 233       | M107      |              | X      |                         |          |
| 218       | M107      | X            |        |                         |          |
| 219       | M107      | X            |        |                         |          |
| 220       | M107      | X            |        |                         |          |
| 221       | M107      | X            |        |                         |          |
| 2008      | M108      | X            |        |                         |          |
| 2018      | M108      | X            |        |                         |          |
| 2012/2013 | M108      | X            |        |                         |          |
| 2002      | M108      | X            |        |                         |          |
| 2005      | M108      |              |        | X                       |          |

|                             |      |   |   |   |   |
|-----------------------------|------|---|---|---|---|
| 2026                        | M108 | X |   |   |   |
| 2027                        | M108 | X |   |   |   |
| 2040                        | M108 | X |   |   |   |
| 2032                        | M108 | X |   |   |   |
| 2034                        | M108 | X |   |   |   |
| 2038                        | M108 | X |   |   |   |
| 2042/2044                   | M108 | X |   |   |   |
| 2014                        | M108 | X |   |   |   |
| space adjacent to 2051      | M109 | X |   |   | See M109 clarifying notes; piping is in 1089/1104 ceiling |
| space adjacent to 2055/2056 | M109 |   |   | X | See M109 clarifying notes                                 |
| 1201                        | M110 |   | X |   | gypsum ceiling from 1201 door to drinking fountain        |
| 1215                        | M110 | X |   |   |   |
| 1209                        | M110 | X |   |   |   |
| 1211                        | M110 | X |   |   |   |
| 1202                        | M110 |   |   | X |   |
| 1203                        | M110 | X |   |   |   |
| 1205                        | M110 | X |   |   |   |
| 2201                        | M111 |   |   | X |   |



1 SECOND PART FLOOR PLAN PLUMBING - NEW  
SCALE: 1:100


- NEW DRAWING NOTES
- 1

PROVIDE AND INSTALL NEW DCW, DHW, DHWR, DTW PIPING AT CEILING LEVEL AS INDICATED.
- 2

NEW 650 DCW, 200 DHW, 200 DHWR, 400 DTW RISERS UP FROM FIRST FLOOR.
- 3

NEW 650 DCW, 200 DHW, 200 DHWR, 400 DTW RISERS DOWN TO FIRST FLOOR.
- GENERAL NOTES
1.

AFTER NEW PIPING IS INSTALLED AND TIED IN, REMOVE OLD LABELS AND RELABEL OLD DOMESTIC WATER PIPING THROUGHOUT, WITH LABEL SPACING AND CONTENT TO REQUIREMENTS OF SPECIFICATIONS.

 Public Works and  
Government Services Canada  
Travaux publics et  
Services gouvernementaux Canada



Stantec Consulting Ltd.  
400 – 1331 Clyde Avenue  
Ottawa ON, K2C 3G4  
Tel: (613) 722-4420  
www.stantec.com



|          |                   |            |
|----------|-------------------|------------|
|          |                   |            |
|          |                   |            |
|          |                   |            |
|          |                   |            |
|          |                   |            |
| 01       | ISSUED FOR TENDER | 2020.05.29 |
| revision |                   | date       |

Do not scale drawings.  
Verify all dimensions and conditions on site and immediately  
notify the Departmental Representative of all discrepancies.

|              |   |
|--------------|---|
| <div>A</div> | Detail No.  |
| <div>B</div> | No. du détail   |
| <div>C</div> | drawing no. – where detail required<br>dessin no. – où détail exigé |
| <div>C</div> | drawing no. – where detailed<br>dessin no. – où détaillé            |

project title  
titre du projet  
LONDON ONTARIO  
PUBLIC SERVICES PROCUREMENT CANADA  
1391 SANDFORD STREET  
LONDON, ON N5V 4T3  
LONDON CROSS CONNECTION  
CONTROL MEASURES

drawing title  
titre du dessin  
MECHANICAL  
SECOND PART FLOOR PLAN  
PLUMBING – NEW

drawn by  
dessine par  
ZEYAD ABDELAZEZ

designed by  
conc par  
CARY MCGEE

approved by  
approuve par  
DAVID YIN

bid  
offre  
DEBI BANNON

project manager  
administrateur  
de projets

project date  
date du projet  
2020-05-29

project no.  
no. du projet  
R.106155.001

drawing no.  
dessine no.  
M109