

LEVEL OF SECURITY | NIVEAU DE SÉCURITÉ

This design is an instrument of service and is protected by copyright, copyright for the consultant's instrument of service belongs to the consultant. Copies including electronic copies, may only be used for the purpose intended and for a one-time use, on the same site, and for the same project and may not be offered for sale or transfer without the express written consent of the consultant.

Cette conception est un instrument de service protégé par le droit d'auteur. Le droit d'auteur sur l'instrument de service appartient à ce dernier. Les exemplaires de ce dessin y compris les exemplaires électroniques, ne peuvent servir qu'à des fins prévues, et ce, qu'une fois, sur le même chantier et pour le même projet. Ils ne peuvent être offerts en vente ni transférés sans le consentement écrit exprès de l'expert-consultant.



REFERENCES  
BACKGROUND IMAGE SUPPLIED BY AND SOURCED UNDER LICENSE FROM BING IMAGES FOR ARCMAP ON - JUNE 25, 2020  
IMAGE GEOREFERENCED BY GOLDER AND INTENDED FOR INDICATIVE PURPOSES ONLY

KEY PLAN BACKGROUND AND BASE MAPPING FROM CANMATRIX 1: 250000 NTS - 92109  
CANVEC DATA OBTAINED FROM GEOGRATIS, CENTRE FOR TOPOGRAPHIC INFORMATION (NRCAN, ESS) DEPARTMENT OF NATURAL RESOURCES, CANADA

DATUM: NAD83, PROJECTION: UTM ZONE 10

- DRAWING TO BE VIEWED IN COLOUR
- DO NOT SCALE DRAWING
- VERIFY ALL DIMENSIONS AND CONDITIONS AND IMMEDIATELY NOTIFY THE DEPARTMENT REPRESENTATIVE OF DISCREPANCIES



NO.	DATE	REVISION	APPR.
0	2020-08-12	ISSUED AS FINAL	EVK
SCALE   ÉCHELLE			

LOCATION | EMPLACEMENT  
KAMLOOPS,  
BRITISH COLUMBIA

PROJECT | PROJET  
KAMLOOPS SNOWBIRDS CLEAN-UP

TRADE | MÉTIER  
SITING

DATE  
2020-08-12

SUBJECT | SUJET  
SITE LOCATION

PRODUCTION  
DESIGNED | ÉTUDE  
CLAIRE WILSH

REVIEWED | REVU  
DESIGN AGENT CONC.  
DESIGN AGENT CONC.

PROJ MGR | GEST PROJ  
PROJ MGR | GEST PROJ

CHECKED | VÉRIFIÉ  
ERIK VON KROGH  
DES MGR | GEST CONC  
DES MGR | GEST CONC

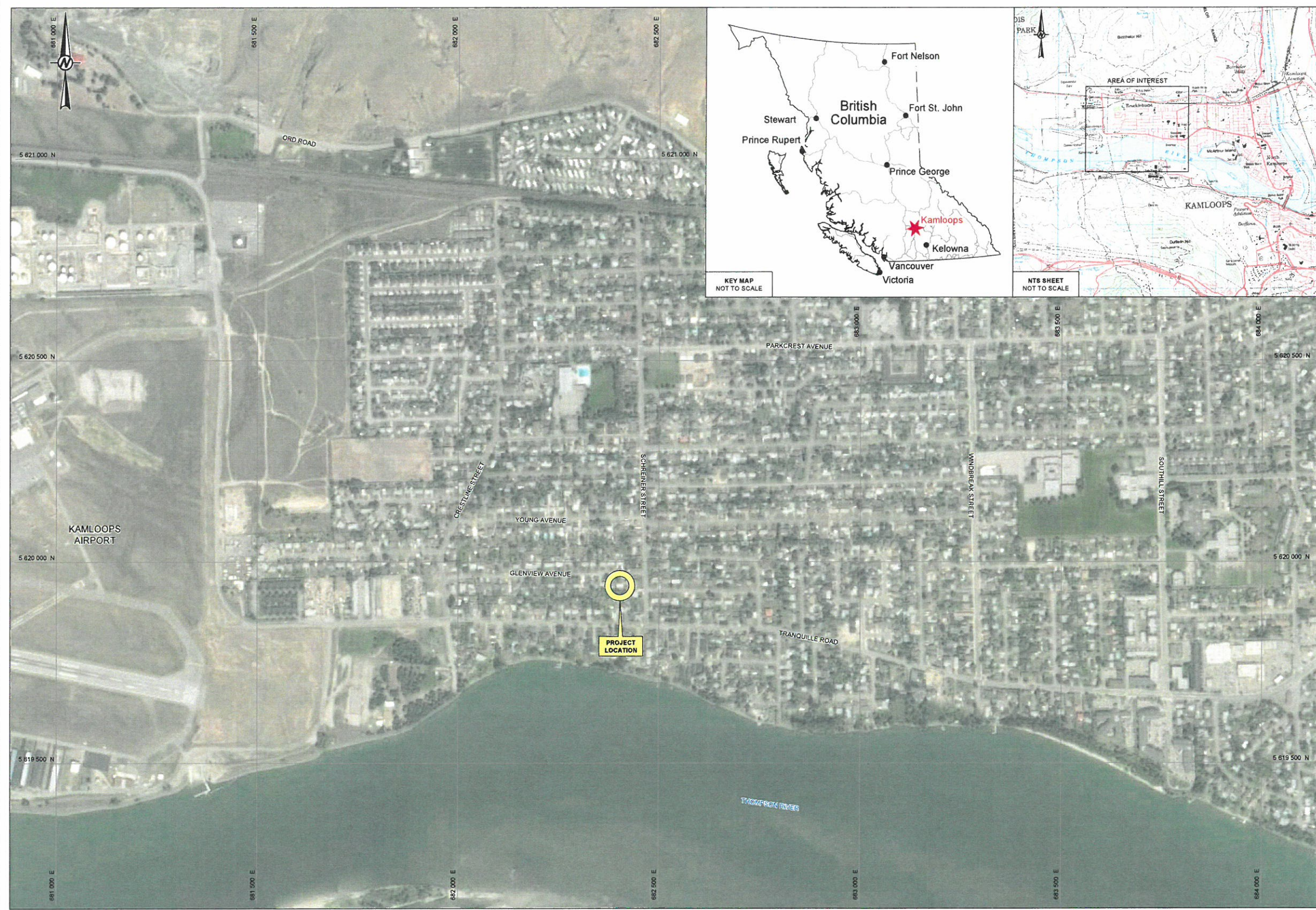
COORDINATION  
FIRE | INCENDIE  
FIRE | INCENDIE

WBS NO. | NO. OTP  
PF NO. | NO. DP

DWG. NO. | NO. DESSIN  
101

Canada

Sheet 1 of 6



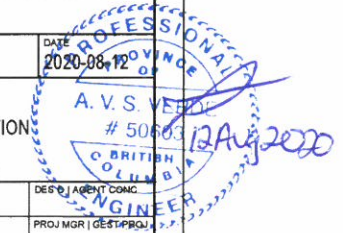
KEY MAP  
NOT TO SCALE

NTS SHEET  
NOT TO SCALE

# PUBLIC WORKS AND GOVERNMENT SERVICES CANADA

## KAMLOOPS SNOWBIRDS CLEAN-UP

LIST OF FIGURES	
101	SITE LOCATION
102	EXISTING INFRASTRUCTURE AND ACCESS
103	SOIL ANALYTICAL RESULTS
104	GROUNDWATER ANALYTICAL RESULTS
105	VAPOUR ANALYTICAL RESULTS
106	CONTAMINATION EXTENTS - PLAN VIEW
107	CROSS-SECTIONS A-A' AND B-B'
108	SITE RESTORATION



This design is an instrument of service and is protected by copyright, copyright for the consultant's instrument of service belongs to the consultant. Copies, including electronic copies, may only be used for the purpose intended and for a one-time use, on the same site, and for the same project and may not be offered for sale or transfer without the express written consent of the consultant.

Cette conception est un instrument de service protégé par le droit d'auteur. Le droit d'auteur sur l'instrument de service appartient à ce dernier. Les exemplaires de ce dessin, y compris les exemplaires électroniques, ne peuvent servir qu'à son utilisation prévue, et ce, qu'une fois, sur le même chantier et pour le même projet. Ils ne peuvent être offerts en vente ni transférés sans le consentement écrit exprès du fournisseur.



- LEGEND**
- WORK AREA
  - LOT BOUNDARY
  - GAS LINE (INFERRED)
  - SANITARY LINE (INFERRED)
  - WATER LINE (INFERRED)
  - SANITARY LINE (CITY OF KAMLOOPS)
  - WATER LINE (CITY OF KAMLOOPS)
  - MONITORING WELL LOCATION
  - MONITORING WELL WITH EMBEDDED VAPOUR PROBE LOCATION

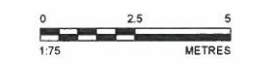
**REFERENCE(S)**

BACKGROUND IMAGE (2017), SANITARY LINES AND WATER LINES SUPPLIED BY THE CITY OF KAMLOOPS ON 2020-06-16  
 IMAGE GEOREFERENCED BY GOLDER AND INTENDED FOR INDICATIVE PURPOSES ONLY

LOT BOUNDARIES OBTAINED FROM THE CITY OF KAMLOOPS ON 2020-05-28

DATUM: NAD83, PROJECTION: UTM ZONE 10

- DRAWING TO BE VIEWED IN COLOUR
- DO NOT SCALE DRAWINGS
- VERIFY ALL DIMENSIONS AND CONDITIONS AND IMMEDIATELY NOTIFY THE DEPARTMENT REPRESENTATIVE OF DISCREPANCIES



NO.	DATE	REVISION	APPR.
0	2020-08-12	ISSUED AS FINAL	EVK

LOCATION | EMPLACEMENT  
**KAMLOOPS, BRITISH COLUMBIA**

PROJECT | PROJET  
**KAMLOOPS SNOWBIRDS CLEAN-UP**

TRADE | MÉTIER  
**SITING**

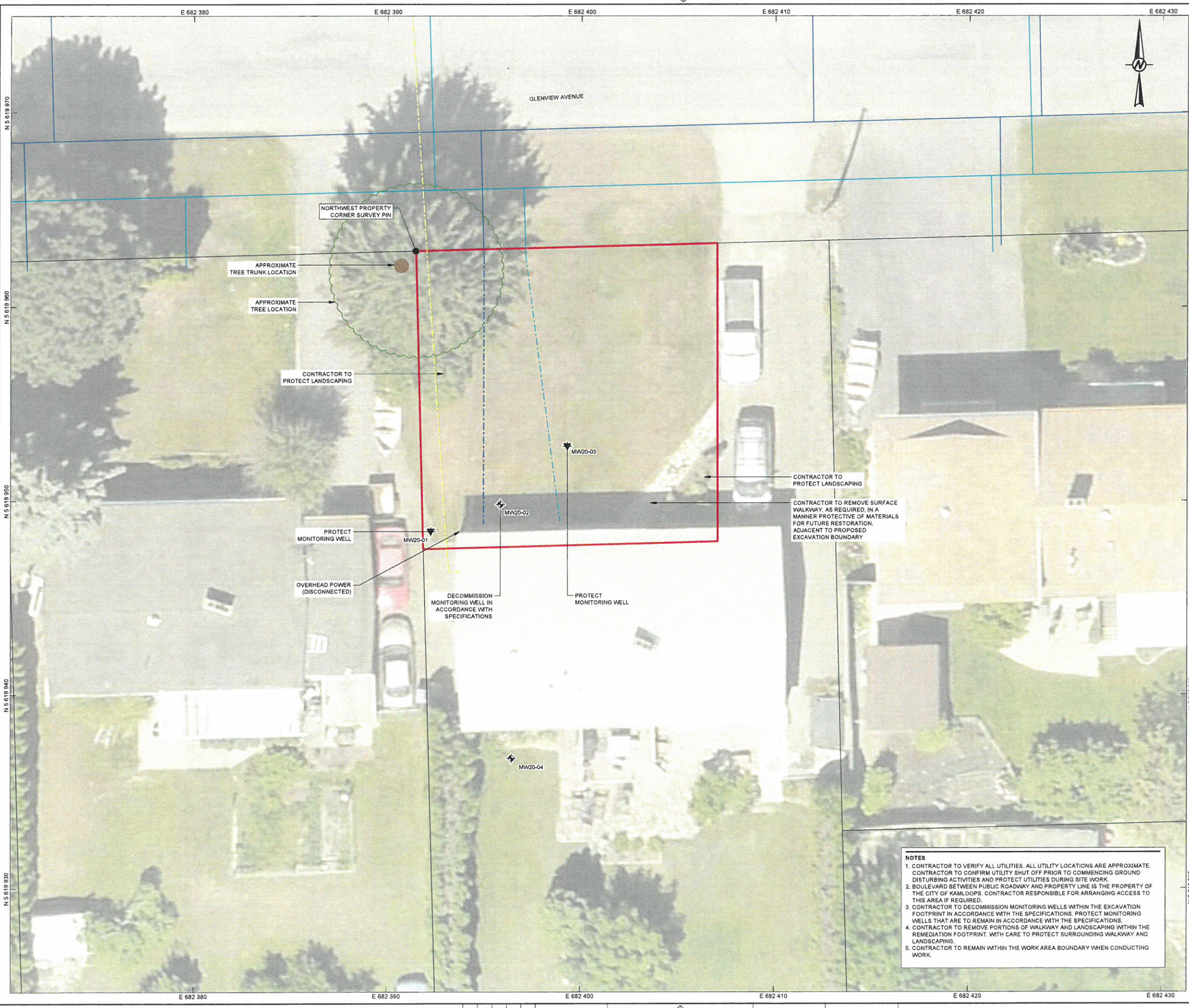
DATE  
**2020-08-12**

SUBJECT | SUJET  
**EXISTING INFRASTRUCTURE AND ACCESS**

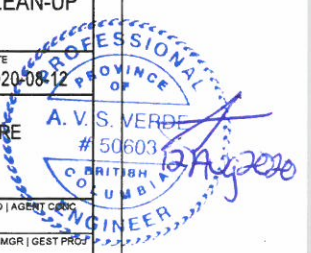
DESIGNED   ÉTUDE	REVIEWED   REVU	DES O   AGENT CAD
CLARE WILKIN		
DRAWN   DESSINÉ		PROJ MGR   GEST PROJ
RYLAND JAMES		
CHECKED   VÉRIFIÉ		DES MGR   GEST CONC
ERIK VON KROGH		
COORDINATION		FIRE   INCENDIE

WBS NO. | NO. OTP  
 PF NO. | NO. DP

DWG. NO. | NO. DESSIN  
**102**



- NOTES**
1. CONTRACTOR TO VERIFY ALL UTILITIES. ALL UTILITY LOCATIONS ARE APPROXIMATE. CONTRACTOR TO CONFIRM UTILITY SHUT OFF PRIOR TO COMMENCING GROUND DISTURBING ACTIVITIES AND PROTECT UTILITIES DURING SITE WORK.
  2. BOULEVARD BETWEEN PUBLIC ROADWAY AND PROPERTY LINE IS THE PROPERTY OF THE CITY OF KAMLOOPS. CONTRACTOR RESPONSIBLE FOR ARRANGING ACCESS TO THIS AREA IF REQUIRED.
  3. CONTRACTOR TO DECOMMISSION MONITORING WELLS WITHIN THE EXCAVATION FOOTPRINT IN ACCORDANCE WITH THE SPECIFICATIONS. PROTECT MONITORING WELLS THAT ARE TO REMAIN IN ACCORDANCE WITH THE SPECIFICATIONS.
  4. CONTRACTOR TO REMOVE PORTIONS OF WALKWAY AND LANDSCAPING WITHIN THE REMEDIATION FOOTPRINT, WITH CARE TO PROTECT SURROUNDING WALKWAY AND LANDSCAPING.
  5. CONTRACTOR TO REMAIN WITHIN THE WORK AREA BOUNDARY WHEN CONDUCTING WORK.



This design is an instrument of service and is protected by copyright... This document est un instrument de service et est protégé par le droit d'auteur...



- LEGEND: WORK AREA, LOT BOUNDARY, EXCAVATION EXTENTS, MONITORING WELL LOCATION, BOREHOLE LOCATION, MONITORING WELL WITH EMBEDDED VAPOUR PROBE LOCATION, VAPOUR PROBE LOCATION, SOIL SAMPLE LOCATION, SOIL PARAMETER RESULTS FOR ALL MEASURED ANALYTES AND ALL SAMPLED DEPTHS ARE LESS THAN APPLICABLE CSR STANDARD FOR RESIDENTIAL LOW DENSITY LAND USE.

REFERENCE(S): BACKGROUND IMAGE (2017) SUPPLIED BY THE CITY OF KAMLOOPS. IMAGE GEOREFERENCED BY GOLDER AND INTENDED FOR INDICATIVE PURPOSES ONLY.

- DRAWING TO BE VIEWED IN COLOUR
- DO NOT SCALE DRAWING
- VERIFY ALL DIMENSIONS AND CONDITIONS AND IMMEDIATELY NOTIFY THE DEPARTMENT REPRESENTATIVE OF DISCREPANCIES

NOTES: 1. SAMPLING LOCATIONS ARE APPROXIMATE... 2. RESULTS ARE IN mg/kg (MILLIGRAMS PER KILOGRAM) UNLESS NOTED OTHERWISE... 11. - = PARAMETER NOT ANALYZED.



Table with columns for Location, Sample Date, Parameter, and CSR (mg/kg). Lists various contaminants like Cadmium, Chromium, Benzene, Toluene, Ethylbenzene, etc., across multiple sampling events.

Table with columns for Location, Sample Date, Sample Depth, Laboratory Number, Parameter, and Unit. Shows specific results for benzene, ethylbenzene, toluene, etc.

Table with columns for Location, Sample Date, Parameter, and CSR (mg/kg). Lists various contaminants like Cadmium, Chromium, Benzene, Toluene, Ethylbenzene, etc., across multiple sampling events.

Administrative and project information including: NO. DATE REVISION APPR., SCALE | ÉCHELLE, LOCATION | EMPLACEMENT (KAMLOOPS, BRITISH COLUMBIA), PROJECT | PROJET (KAMLOOPS SNOWBIRDS CLEANUP), TRADE | MÉTIER (SITING), SUBJECT | SUJET (SOIL ANALYTICAL RESULTS # 50603), PRODUCTION, DESIGNED | ÉTUDE, DRAWN | DESSIN, CHECKED | VÉRIFIÉ, COORDINATION, WBS NO. | NO. OTP, DWG. NO. | NO. DESSIN, and a signature stamp for A.V.S. VERBE.





LEVEL OF SECURITY | NIVEAU DE SÉCURITÉ

This design is an instrument of service and is protected by copyright, copyright for the consultant's instrument of service belongs to the consultant. Copies including electronic copies, may only be used for the purpose intended and for a one-time use, on the same site, and for the same project and may not be offered for sale or transfer without the express written consent of the consultant.

Cette conception est un instrument de service protégé par le droit d'auteur. Le droit d'auteur sur l'instrument de service de l'ingénieur appartient à ce dernier. Les exemplaires de ce dessin, y compris les exemplaires électroniques, ne peuvent servir qu'à une seule fin, et ce, qu'une fois, sur le même chantier et pour le même projet. Ils ne peuvent être offerts en vente ni transférés sans le consentement écrit exprès de l'ingénieur.



- LEGEND**
- WORK AREA
  - LOT BOUNDARY
  - - - EXCAVATION EXTENTS
  - ⊕ MONITORING WELL LOCATION
  - ⊖ MONITORING WELL WITH EMBEDDED VAPOUR PROBE LOCATION
  - PARAMETERS ANALYZED MET THE MOST CONSERVATIVE CSR STANDARDS FOR DRINKING WATER AND/OR FRESHWATER AQUATIC LIFE. SAMPLING CONDUCTED JUNE, 2020

**REFERENCE(S)**

BACKGROUND IMAGE (2017) SUPPLIED BY THE CITY OF KAMLOOPS  
 IMAGE GEOREFERENCED BY GOLDER AND INTENDED FOR INDICATIVE PURPOSES ONLY

LOT BOUNDARIES OBTAINED FROM THE CITY OF KAMLOOPS ON 2020-05-28

DATUM: NAD83, PROJECTION: UTM ZONE 10

- NOTE(S)**
- GROUNDWATER SAMPLING OCCURED ON JUNE 19, 2020
- FIGURE TO BE READ IN CONJUNCTION WITH FULL ANALYTICAL DATA APPENDED TO SPECIFICATIONS
  - DRAWING TO BE VIEWED IN COLOUR
  - DO NOT SCALE DRAWING
  - VERIFY ALL DIMENSIONS AND CONDITIONS AND IMMEDIATELY NOTIFY THE DEPARTMENT REPRESENTATIVE OF DISCREPANCIES



NO.	DATE	REVISION	APPR.
0	2020-08-12	ISSUED AS FINAL	EVR

LOCATION | EMPLACEMENT  
 KAMLOOPS,  
 BRITISH COLUMBIA

PROJECT | PROJET  
 KAMLOOPS SNOWBIRDS CLEANUP

TRADE | MÉTIER  
 SITING

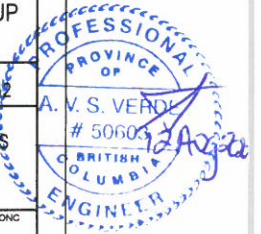
DATE  
 2020-08-12

SUBJECT | SUJET  
 GROUNDWATER ANALYTICAL RESULTS  
 (JUNE 19, 2020)

DESIGNED   ÉTUDE	REVIEWED   REVU	DESIGN AGENT CONC.
CLARE WILKIN		
DRAWN   DESSINÉ		PROJECT MGR   GEST PROJ
RYLAND JAMES		
CHECKED   VÉRIFIÉ		DESIGN MGR   GEST CONC.
ERIK VON KROGH		
COORDINATION		FIRE   INCENDIE

WBS NO. | NO. OTP  
 PF NO. | NO. DP

DWG. NO. | NO. DESSIN  
 104





Government of Canada / Gouvernement du Canada

LEVEL OF SECURITY | NIVEAU DE SÉCURITÉ

This design is an instrument of service and is protected by copyright. It is the property of the consultant and is not to be used for any other purpose without the express written consent of the consultant.

Cette conception est un instrument de service et est protégée par le droit d'auteur. Elle est la propriété du consultant et ne peut être utilisée à d'autres fins sans le consentement écrit du consultant.



- LEGEND**
- WORK AREA
  - LOT BOUNDARY
  - EXCAVATION EXTENTS
  - VAPOUR PROBE LOCATION
  - MONITORING WELL WITH EMBEDDED VAPOUR PROBE LOCATION
  - SOIL VAPOUR PARAMETERS ARE LESS THAN APPLICABLE CSR STANDARDS
  - ONE OR MORE SOIL VAPOUR PARAMETER EXCEEDS APPLICABLE CSR STANDARDS

**REFERENCE(S)**

BACKGROUND IMAGE (2017) SUPPLIED BY THE CITY OF KAMLOOPS  
 IMAGE GEOREFERENCED BY GOLDER AND INTENDED FOR INDICATIVE PURPOSES ONLY

LOT BOUNDARIES OBTAINED FROM THE CITY OF KAMLOOPS ON 2020-05-28

DATUM: NAD83, PROJECTION: UTM ZONE 10

**NOTE(S)**

- SOIL VAPOUR WAS ASSESSED FOR THE HOME ON SITE AND THE APPLICABLE PATHWAYS
- SV20-09 IS LOCATED WITHIN THE BUILDING

- FIGURE TO BE READ IN CONJUNCTION WITH FULL ANALYTICAL DATA APPENDED TO SPECIFICATIONS
- DRAWING TO BE VIEWED IN COLOUR
- DO NOT SCALE DRAWING
- VERIFY ALL DIMENSIONS AND CONDITIONS AND IMMEDIATELY NOTIFY THE DEPARTMENT REPRESENTATIVE OF DISCREPANCIES



NO.	DATE	REVISION	APPR.
0	2020-08-12	ISSUED AS FINAL	EVR

LOCATION | EMPLACEMENT  
 KAMLOOPS,  
 BRITISH COLUMBIA

PROJECT | PROJET  
 KAMLOOPS SNOWBIRDS CLEANUP

TRADE | MÉTIER  
 SITING

SOIL VAPOUR ANALYTICAL RESULTS

DESIGNED   ÉTUDE	REVIEWED   REVU	DESIGNED   AGENT CONC.
CLARE WILKIN		
DRAWN   DESSINÉ		PROJECT MGR   GEST PROJ.
RYLAND JAMES		
CHECKED   VÉRIFIÉ		DESIGN MGR   GEST CONC.
ERIK VON KRUGH		
COORDINATION		FIRE   INCENDIE

WBS NO. | NO. OTP: \_\_\_\_\_ PF NO. | NO. DP: \_\_\_\_\_

DWG. NO. | NO. DESSIN: 105



Parameter	Attenuation factor (α)	Units	SV20-01 18/Jun/20 3.8-4.1		SV20-03 18/Jun/20 3.8-4.1		SV20-03 18/Jun/20 3.5-3.8		SV20-09 26/Jun/20	
			Indoor Air Unattenuated	Outdoor Air 0.0000061	Indoor Air Unattenuated	Outdoor Air 0.0000061	Indoor Air Unattenuated	Outdoor Air 0.0000061	Indoor Air Unattenuated	Outdoor Air
Naphthalene	3	ug/m3	<3.0	0.0000018	<3.0	0.0000018	<3.0	0.0000018	<3.3	
VPHv (Volatile Petroleum Hydrocarbons)	1000	ug/m3	71000	0.043	26000	0.016	27300	0.0167	13600	
Benzene	1.5	ug/m3	44.7	0.0000273	11.9	0.00000726	12.3	0.00000750	4.85	
Xylenes, Total	100	ug/m3	261	0.000159	< 20	0.000012	< 20	0.000012	40.3	
1,3-Butadiene	2	ug/m3	36.7	0.0000224	18.7	0.0000114	17.1	0.0000104	< 0.55	
1,2,4-Trimethylbenzene	7	ug/m3	9.25	0.0000002	2.19	0.0000001	1.89	0.0000005	9.4	
1,3,5-Trimethylbenzene	3.5	ug/m3	21.1	0.0000129	<0.98	0.0000006	<0.98	0.0000006	2.5	
Methyl Cyclohexane	1500	ug/m3	2900	0.0018	990	0.000604	1050	0.000641	1660	



This design is an instrument of service and is protected by copyright, copyright, copyright for the consultant's instrument of service belongs to the consultant. Copies including electronic copies, may only be used for the purpose intended and for a one-time use, on the same site, and for the same project and may not be offered for sale or transfer without the express written consent of the consultant.

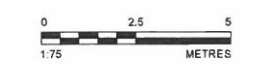
Cette conception est un instrument de service protégé par le droit d'auteur. Le droit d'auteur sur l'instrument de service appartient à ce dernier. Les exemplaires de ce dessin, y compris les exemplaires électroniques, ne peuvent servir qu'à une seule fois, sur le même chantier et pour le même projet. Ils ne peuvent être offerts en vente ni transférés sans le consentement écrit exprès du fournisseur.



- LEGEND**
- EXCAVATION EXTENTS
  - INFERRED HAZARDOUS WASTE EXTENTS
  - WORK AREA
  - LOT BOUNDARY
  - GAS LINE (INFERRED)
  - SANITARY LINE (INFERRED)
  - WATER LINE (INFERRED)
  - SANITARY LINE (CITY OF KAMLOOPS)
  - WATER LINE (CITY OF KAMLOOPS)
  - MONITORING WELL LOCATION
  - MONITORING WELL WITH EMBEDDED VAPOUR PROBE LOCATION

**REFERENCE(S)**  
 BACKGROUND IMAGE (2017), SANITARY LINES AND WATER LINES SUPPLIED BY THE CITY OF KAMLOOPS ON 2020-06-16 IMAGE GEOREFERENCED BY GOLDER AND INTENDED FOR INDICATIVE PURPOSES ONLY.  
 LOT BOUNDARIES OBTAINED FROM THE CITY OF KAMLOOPS ON 2020-05-28  
 DATUM: NAD83, PROJECTION: UTM ZONE 10

- DRAWING TO BE VIEWED IN COLOUR
- DO NOT SCALE DRAWING
- VERIFY ALL DIMENSIONS AND CONDITIONS AND IMMEDIATELY NOTIFY THE DEPARTMENT REPRESENTATIVE OF DISCREPANCIES



NO.	DATE	REVISION	APPR.
0	2020-06-12	ISSUED AS FINAL	EVK

LOCATION | EMPLACEMENT  
 KAMLOOPS, BRITISH COLUMBIA

PROJECT | PROJET  
 KAMLOOPS SNOWBIRDS CLEAN-UP

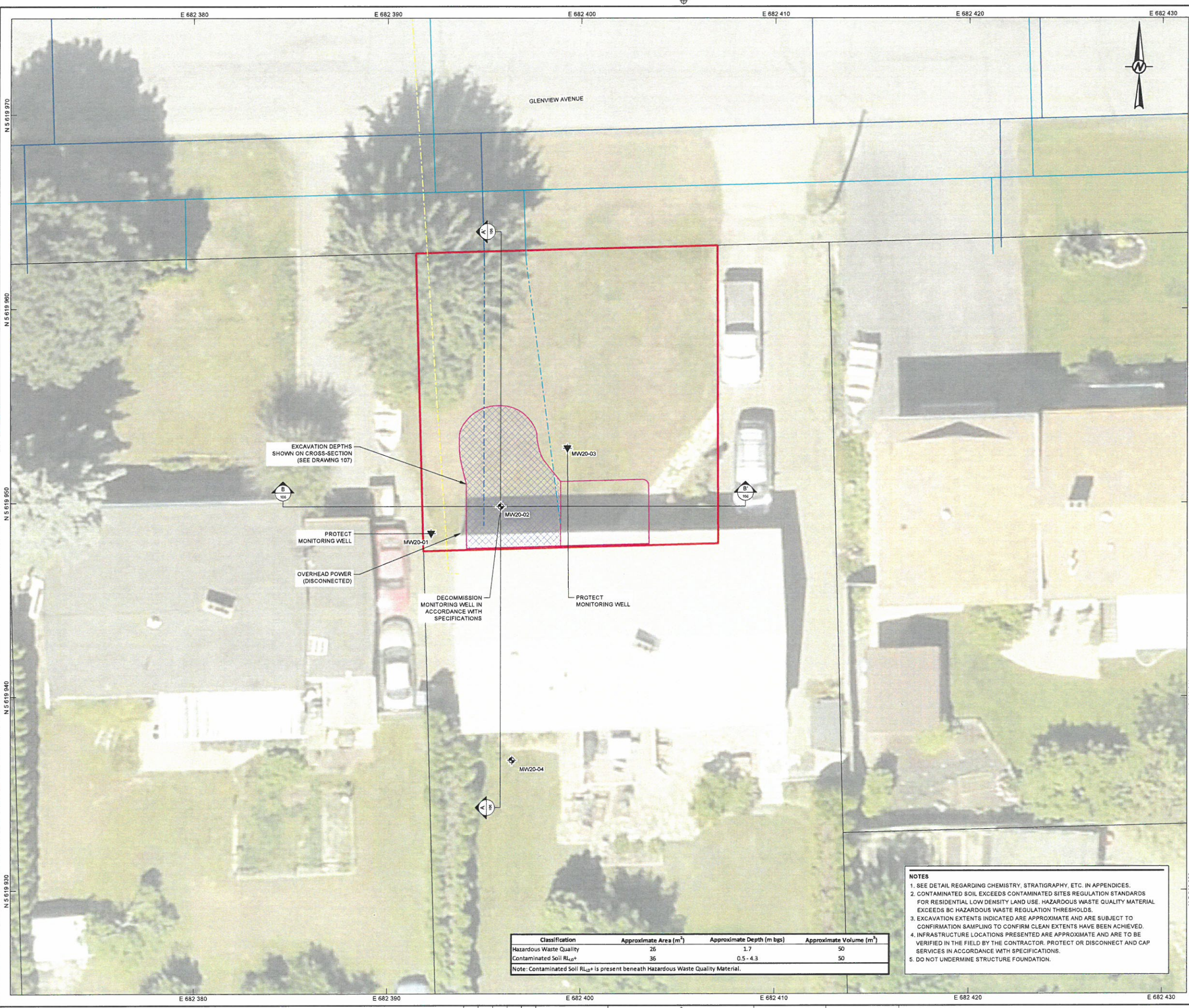
TRADE | MÉTIER  
 SITING

SUBJECT | SUJET  
 CONTAMINATION EXTENTS - PLAN VIEW

DESIGNED   ÉTUDE	CLARE VILKIN	DESIGNED   ÉTUDE	CLARE VILKIN
DRAWN   DESSINÉ	RYLAND JAMES	PROJ MGR   GESTION DE PROJ	RYLAND JAMES
CHECKED   VÉRIFIÉ	ERIK VOH KRUGH	DES MGR   GEST CONC	ERIK VOH KRUGH
COORDINATION		FIRE   INCENDIE	

WBS NO. | NO. OTP: \_\_\_\_\_ PF NO. | NO. DP: \_\_\_\_\_

DWG. NO. | NO. DESSIN: 106



EXCAVATION DEPTHS SHOWN ON CROSS-SECTION (SEE DRAWING 107)

PROTECT MONITORING WELL

OVERHEAD POWER (DISCONNECTED)

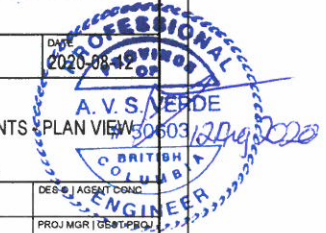
DECOMMISSION MONITORING WELL IN ACCORDANCE WITH SPECIFICATIONS

PROTECT MONITORING WELL

Classification	Approximate Area (m <sup>2</sup> )	Approximate Depth (m bgs)	Approximate Volume (m <sup>3</sup> )
Hazardous Waste Quality	26	1.7	50
Contaminated Soil RL <sub>10</sub> +	36	0.5 - 4.3	50

Note: Contaminated Soil RL<sub>10</sub>+ is present beneath Hazardous Waste Quality Material.

- NOTES**
- SEE DETAIL REGARDING CHEMISTRY, STRATIGRAPHY, ETC. IN APPENDICES.
  - CONTAMINATED SOIL EXCEEDS CONTAMINATED SITES REGULATION STANDARDS FOR RESIDENTIAL LOW DENSITY LAND USE. HAZARDOUS WASTE QUALITY MATERIAL EXCEEDS BC HAZARDOUS WASTE REGULATION THRESHOLDS.
  - EXCAVATION EXTENTS INDICATED ARE APPROXIMATE AND ARE SUBJECT TO CONFIRMATION SAMPLING TO CONFIRM CLEAN EXTENTS HAVE BEEN ACHIEVED.
  - INFRASTRUCTURE LOCATIONS PRESENTED ARE APPROXIMATE AND ARE TO BE VERIFIED IN THE FIELD BY THE CONTRACTOR. PROTECT OR DISCONNECT AND CAP SERVICES IN ACCORDANCE WITH SPECIFICATIONS.
  - DO NOT UNDERMINE STRUCTURE FOUNDATION.



This design is an instrument of service and is protected by copyright. Copyright for the consultant, and the client, shall be retained. Copies of this design, in whole or in part, may not be used for any other purpose without the express written consent of the consultant.

Cette conception est un instrument de service protégé par le droit d'auteur. Le droit d'auteur sur l'instrument de service de l'expert-conseil appartient à ce dernier. Les répliques de ce dessin, y compris les exemplaires électroniques, ne peuvent servir qu'à des fins prévues, et ce, qu'il s'agisse du même client ou d'un autre client. Toute réimpression ou utilisation non autorisée sans le consentement écrit préalable de l'expert-conseil est interdite.



**LEGEND**

- INFERRED EXTENT OF HAZARDOUS WASTE
- APPROXIMATE GROUND SURFACE
- EXCAVATION EXTENTS

**LOCATION OFFSET (m)**

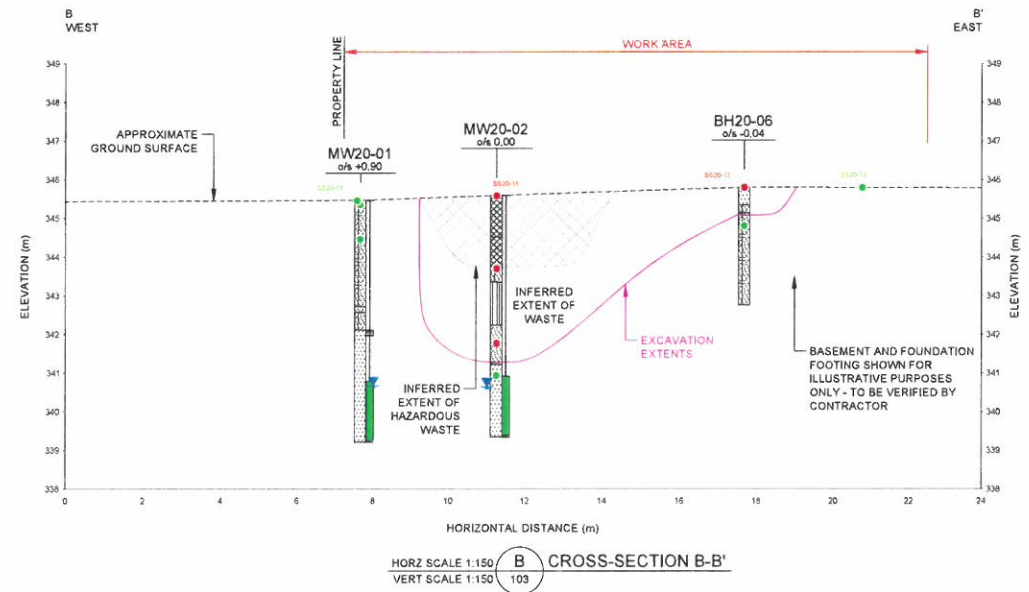
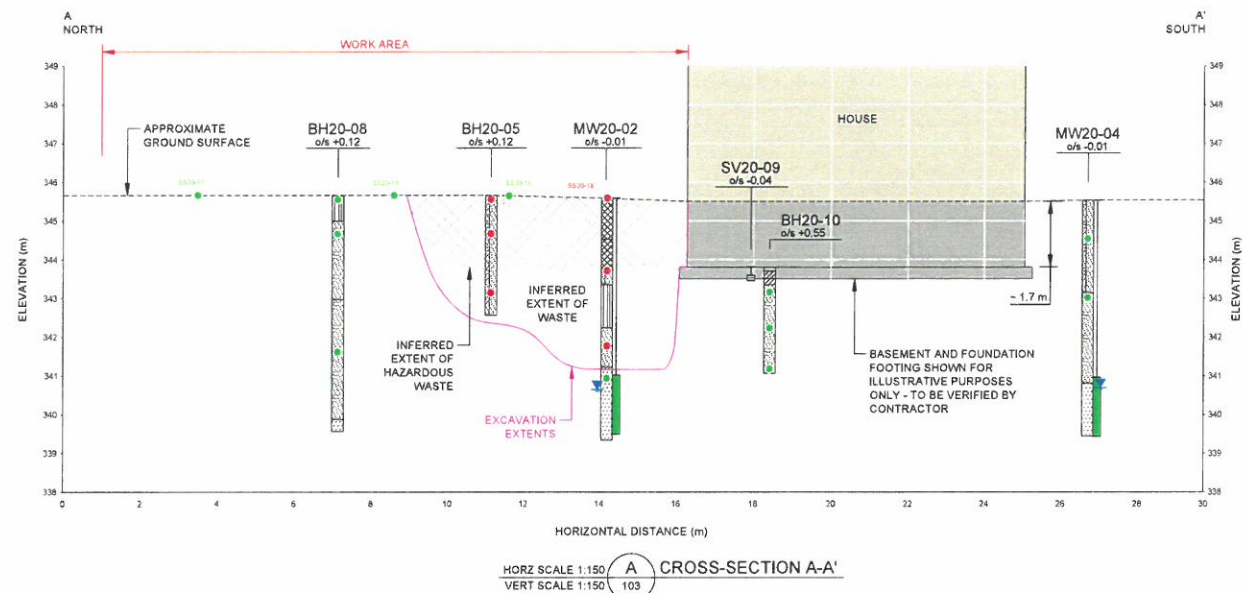
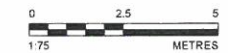
- SOIL STRATIGRAPHY
- VAPOUR PROBE
- WELL SCREEN INTERVAL
- SOIL CONCENTRATION MEETS APPLICABLE STANDARDS
- SOIL CONCENTRATION IS GREATER THAN ONE OR MORE APPLICABLE STANDARD
- GROUNDWATER CONCENTRATION MEETS APPLICABLE STANDARDS
- MEASURED WATER LEVEL (JUNE 10-12, 2020)

**TEST HOLE GRAPHICS**

- NO DESCRIPTION AVAILABLE
- SAND (SP)
- SAND (SW)
- SILT (ML)
- SILT (MH)

VARIOUS COMBINATIONS OF THE ABOVE SYMBOLS HAVE BEEN USED TO REPRESENT MIXTURES OF THE ABOVE MATERIALS.

- DRAWING TO BE VIEWED IN COLOUR  
 - DO NOT SCALE DRAWING  
 - VERIFY ALL DIMENSIONS AND CONDITIONS AND IMMEDIATELY NOTIFY THE DEPARTMENT REPRESENTATIVE OF DISCREPANCIES



Parameter	CSR RLLD <sup>1</sup> Unit	Location																		
		SS20-11	SS20-13	SS20-15	SS20-16	SS20-17	SS20-17	SS20-18	SS20-18	MW20-01	MW20-01	MW20-01	MW20-01	MW20-01	MW20-01	MW20-01	MW20-01	MW20-01	MW20-02	MW20-02
Cadmium	3-20 mg/kg	-	-	0.202	0.147	0.169	0.173	32.8	26.6	0.139	0.166	0.118	0.080	0.035	0.065	0.063	0.090	-	0.118	0.097
Chromium	60 mg/kg	-	-	45.4	50.2	45.1	49.5	75.8	79.8	45.9	43.2	39.8	41.2	20.0	27.7	15.8	16.9	-	21.6	23.0
n-Nonane	4.5 mg/kg	<0.050	<0.050	<0.050	<0.050	4.29	5.25	194	557	<0.050	<0.050	<0.050	<0.050	<0.050	<0.050	<0.050	<0.050	-	80.5	2.30
1,2-dibromoethane	3.5 mg/kg	<0.050	<0.050	<0.050	<0.050	<0.15	<8.5	<13	<13	<0.050	<0.050	<0.050	<0.050	<0.050	<0.050	<0.050	<0.050	-	<400	<0.050
Benzene	0.035 mg/kg	<0.0050	<0.0050	<0.0050	<0.0050	0.0091	0.0089	1.65	3.43	<0.0050	<0.0050	<0.0050	<0.0050	<0.0050	<0.0050	<0.0050	<0.0050	0.399	0.345	<0.0050
Toluene	0.5 mg/kg	<0.050	<0.050	<0.050	<0.050	0.126	0.135	22.1	40.8	<0.050	<0.050	<0.050	<0.050	<0.050	<0.050	<0.050	<0.050	7.03	8.12	0.053
Ethylbenzene	15 mg/kg	<0.015	<0.015	<0.015	<0.015	0.838	0.828	57.7	97.1	<0.015	<0.015	<0.015	<0.015	<0.015	<0.015	<0.015	<0.015	11.7	12.8	0.114
Xylenes, Total	6.5 mg/kg	<0.075	<0.075	<0.075	<0.075	6.34	5.93	369	603	<0.075	<0.075	<0.075	<0.075	<0.075	<0.075	<0.075	<0.075	91.1	72.1	0.884
2-methylnaphthalene	60 mg/kg	0.340	<0.010	0.221	<0.010	4.52	2.95	68.9	59.2	<0.010	<0.010	<0.010	<0.010	<0.010	<0.010	<0.010	<0.010	11.7	3.22	3.57
Naphthalene	0.6 mg/kg	<0.080	<0.010	<0.040	<0.010	2.30	1.61	<4.1	<3.5	<0.010	<0.010	<0.010	<0.010	<0.010	<0.010	<0.010	<0.010	<6.5	<2.00	<2.00
Quinoline	2.5 mg/kg	<0.050	<0.050	<0.050	<0.050	<0.40	<0.30	<4.0	<4.0	<0.050	<0.050	<0.050	<0.050	<0.050	<0.050	<0.050	<0.050	<1.5	<0.300	<0.400
LEPH	1000 mg/kg	300	<200	310	<200	2150	1490	46000	41000	<200	<200	<200	<200	<200	<200	<200	<200	8920	2300	2780
HEPH	1000 mg/kg	<200	<200	<200	<200	<200	<200	1760	1450	<200	<200	<200	<200	<200	<200	<200	<200	240	<200	<200
VPH	200 mg/kg	<100	<100	<100	<100	<100	<100	4630	8200	<100	<100	<100	<100	<100	<100	<100	<100	860	1510	36

Parameter	CSR RLLD <sup>1</sup> Unit	Location																			
		MW20-02	MW20-02	MW20-04	MW20-04	MW20-04	MW20-04	BH20-05	BH20-05	BH20-05	BH20-05	BH20-06	BH20-06	BH20-06	BH20-06	BH20-06	BH20-06	BH20-06	BH20-10	BH20-10	
Cadmium	3-20 mg/kg	0.039	-	-	-	0.046	0.034	0.142	0.227	0.121	0.218	-	-	-	-	-	0.032	0.042	0.048	0.037	0.035
Chromium	60 mg/kg	20.2	-	-	-	17.7	18.9	26.0	58.2	53.8	45.0	-	-	-	-	-	11.3	17.5	18.6	19.7	16.3
n-Nonane	4.5 mg/kg	<0.050	<0.050	<0.050	<0.050	<0.050	<0.050	<0.050	233	304	1.25	<0.050	<0.060	<0.050	<0.050	<0.050	<0.050	<0.050	<0.050	<0.050	<0.050
1,2-dibromoethane	3.5 mg/kg	<0.050	<0.050	<0.050	<0.050	<0.050	<0.050	<0.050	<0.60	<0.90	<0.050	<0.050	<0.050	<0.050	<0.050	<0.050	<0.050	<0.050	<0.050	<0.050	<0.050
Benzene	0.035 mg/kg	<0.0050	<0.0050	<0.0050	<0.0050	<0.0050	<0.0050	<0.0050	0.818	1.93	0.0115	-	<0.0050	<0.0050	<0.0050	<0.0050	<0.0050	<0.0050	<0.0050	<0.0050	<0.0050
Toluene	0.5 mg/kg	<0.050	<0.050	<0.050	<0.050	<0.050	<0.050	<0.050	15.1	28.3	0.145	-	<0.050	<0.050	<0.050	<0.050	<0.050	<0.050	<0.050	<0.050	<0.050
Ethylbenzene	15 mg/kg	<0.015	<0.015	<0.015	<0.015	<0.015	<0.015	<0.015	25.5	49.5	0.270	-	<0.015	<0.015	<0.015	<0.015	<0.015	<0.015	<0.015	<0.015	<0.015
Xylenes, Total	6.5 mg/kg	<0.075	<0.075	<0.075	<0.075	<0.075	<0.075	<0.075	154	298	1.78	-	<0.075	<0.075	<0.075	<0.075	<0.075	<0.075	<0.075	<0.075	<0.075
2-methylnaphthalene	60 mg/kg	0.064	<0.010	<0.010	<0.010	<0.010	<0.010	<0.010	13.6	34.3	2.44	<0.010	<0.010	<0.010	<0.010	<0.010	<0.010	<0.010	<0.010	<0.010	<0.010
Naphthalene	0.6 mg/kg	<0.020	<0.010	<0.010	<0.010	<0.010	<0.010	<0.010	<9.0	<30	<2.0	<0.010	<0.010	<0.010	<0.010	<0.010	<0.010	<0.010	<0.010	<0.010	<0.010
Quinoline	2.5 mg/kg	<0.010	<0.010	<0.050	<0.050	<0.050	<0.050	<0.050	<2.0	<4.0	<0.30	<0.050	<0.050	<0.050	<0.050	<0.050	<0.050	<0.050	<0.050	<0.050	<0.050
LEPH	1000 mg/kg	<200	<200	<200	<200	<200	<200	<200	11300	24000	1510	<200	<200	<200	<200	<200	<200	<200	<200	<200	<200
HEPH	1000 mg/kg	<200	<200	<200	<200	<200	<200	<200	270	310	<200	<200	<200	<200	<200	<200	<200	<200	<200	<200	<200
VPH	200 mg/kg	<10	<100	<100	<100	<100	<100	<100	2240	3530	<100	<100	<100	<100	<100	<100	<100	<100	<100	<100	<100

**NOTES**

- GROUND SURFACE IS APPROXIMATE (BASED ON CITY OF KAMLOOPS CONTOURS)
- FOR DETAILED SOIL STRATIGRAPHY REFER TO MONITORING WELL LOGS
- SEE DETAILS REGARDING CHEMISTRY, STRATIGRAPHY, ETC. IN APPENDICES
- CONTAMINATED SOIL EXCEEDS CONTAMINATED SITES REGULATIONS STANDARDS FOR RESIDENTIAL LOW DENSITY SITE USE, AND HAZARDOUS WASTE QUALITY SOIL EXCEEDS BC HAZARDOUS WASTE REGULATION THRESHOLDS AS DEFINED IN THE SPECIFICATIONS.
- CONTAMINATED AND HAZARDOUS WASTE MATERIAL EXTENTS ARE SHOWN IN CROSS SECTION FOR CONCEPTUAL PURPOSES ONLY. FINAL EXTENTS ARE SUBJECT TO CONFIRMATORY SAMPLING IN ACCORDANCE WITH THE SPECIFICATIONS.
- BASEMENT AND FOUNDATIONS ARE SHOWN FOR ILLUSTRATIVE PURPOSES ONLY AND CONTRACTOR TO VERIFY FOUNDATION DEPTHS AND FOOTING THICKNESSES IN THE FIELD.
- EXCAVATIONS TO BE CARRIED OUT IN ACCORDANCE WITH CONTRACTOR'S EXCAVATION AND BACKFILLING PLAN. CONTRACTOR'S QUALIFIED PROFESSIONAL TO DESIGN SLOPING AND SHORING PLAN IN ADDITION TO MEASURES FOR THE PROTECTION AND STABILIZATION OF THE BUILDING FOUNDATION. EXCAVATION IS NOT TO UNDERMINE THE STRUCTURE FOUNDATION.
- ANY POTENTIAL GROUNDWATER ENCOUNTERED IN THE EXCAVATION, OR OTHER WATER THAT REQUIRES REMOVAL FROM THE WORK AREA, WILL BE MANAGED IN ACCORDANCE WITH APPLICABLE ENVIRONMENTAL REGULATIONS.

0 2020-09-12 ISSUED AS FINAL EVK

NO. DATE REVISION APPR.

SCALE | ÉCHELLE

LOCATION | EMPLACEMENT  
 KAMLOOPS  
 BRITISH COLUMBIA

PROJECT | PROJET  
 KAMLOOPS SNOWBIRDS CLEAN-UP

TRADE | MÉTIER  
 SITING

DATE  
 2020-06-12

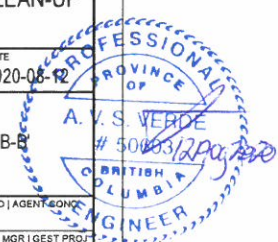
SUBJECT | SUJET  
 CROSS-SECTION A-A' AND B-B'

PRODUCTION | REVIEWED | REVU  
 DESIGNED | ÉTUDE  
 CLARE WILKIN  
 DRAWN | DESSINÉ  
 RYLAND JAMES  
 CHECKED | VÉRIFIÉ  
 ERIK VON KROGH  
 COORDINATION  
 FIRE | INCENDIE

WBS NO. | NO. GTP  
 PF NO. | NO. DP

DWG. NO. | NO. DESSIN  
 107

Canada



This design is an instrument of service and is protected by copyright, copyright for the consultant's instrument of service belongs to the consultant. Copies including electronic copies, may only be used for the purpose intended and for a one-time use, on the same site, and for the same project and may not be offered for sale or transfer without the express written consent of the consultant.

Cette conception est un instrument de service protégé par le droit d'auteur. Le droit d'auteur sur l'instrument de service appartient à la consultante. Les exemplaires de ce dessin, y compris les exemplaires électroniques, ne peuvent servir qu'à une seule fois, sur le même chantier et pour le même projet. Ils ne peuvent être offerts en vente ni transférés sans le consentement écrit exprès de la consultante.



- LEGEND**
- WORK AREA
  - EXCAVATION EXTENTS
  - LOT BOUNDARY
  - GAS LINE (INFERRED)
  - SANITARY LINE (INFERRED)
  - WATER LINE (INFERRED)
  - SANITARY LINE (CITY OF KAMLOOPS)
  - WATER LINE (CITY OF KAMLOOPS)
  - MONITORING WELL LOCATION
  - MONITORING WELL WITH EMBEDDED VAPOUR PROBE LOCATION

**REFERENCE(S)**

BACKGROUND IMAGE (2017), SANITARY LINES AND WATER LINES SUPPLIED BY THE CITY OF KAMLOOPS ON 2020-05-16 IMAGE GEOREFERENCED BY GOLDER AND INTENDED FOR INDICATIVE PURPOSES ONLY

LOT BOUNDARIES OBTAINED FROM THE CITY OF KAMLOOPS ON 2020-05-28

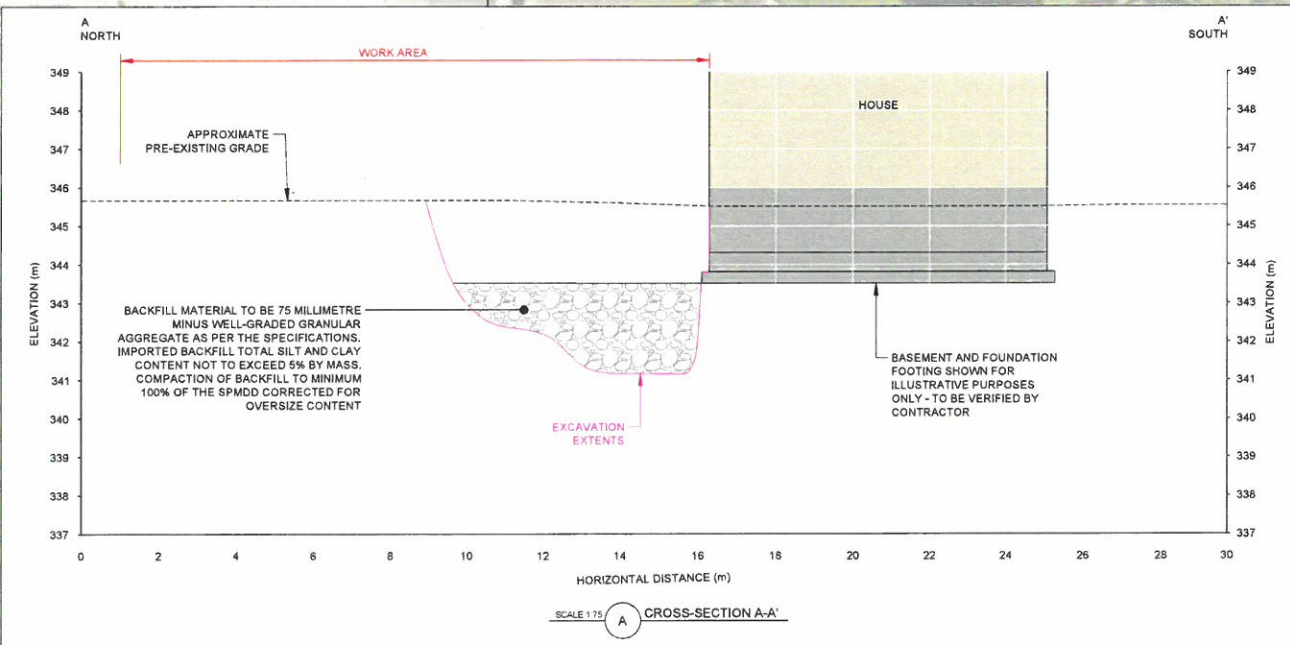
DATUM: NAD83, PROJECTION: UTM ZONE 10

- DRAWING TO BE VIEWED IN COLOUR
- DO NOT SCALE DRAWING
- VERIFY ALL DIMENSIONS AND CONDITIONS AND IMMEDIATELY NOTIFY THE DEPARTMENT REPRESENTATIVE OF DISCREPANCIES
- SPMD = STANDARD PROCTOR MAXIMUM DRY DENSITY



**NOTES**

- RESTORATION DOES NOT REQUIRE REPLACEMENT OF TOPSOIL OR VEGETATION REMOVED DURING EXCAVATION.
- THE CONTRACTOR WILL DOCUMENT PRE-REMEDIATION CONDITIONS AND POST-REMEDIATION CONDITIONS. THE CONTRACTOR WILL PROTECT FLAGSTONES FOR REINSTATEMENT BY OTHERS IN THE FUTURE.



NO.	DATE	REVISION	APPR.
0	2020-08-12	ISSUED AS FINAL	EVK

LOCATION | EMPLACEMENT  
KAMLOOPS, BRITISH COLUMBIA

PROJECT | PROJET  
KAMLOOPS SNOWBIRDS CLEAN-UP

TRADE | MÉTIER  
SITING

SUBJECT | SUJET  
SITE RESTORATION

DESIGNED   ÉTUDE	CLARE MILNIN	DES O   AGENT CONC
DRAWN   DESSINÉ	RYLAND JAMES	PROJ MGR   GEST PROJ
CHECKED   VÉRIFIÉ	ERIK VON KROGH	DES MGR   GEST CONC
COORDINATION		FIRE   INCENDIE

WBS NO. | NO. OTP  
PF NO. | NO. DP

DWG. NO. | NO. DESSIN  
108

