

ASSOCIATION OF PROFESSIONAL ENGINEERS OF SASKATCHEWAN  
**CERTIFICATE OF AUTHORIZATION**  
Member 00899  
Name: S. WARD  
No. 252 08 189  
EXPIRES: 2024  
MECHANICAL: 14887  
ELECTRICAL: 28529

ISSUED FOR CONSTRUCTION 2024-08-19

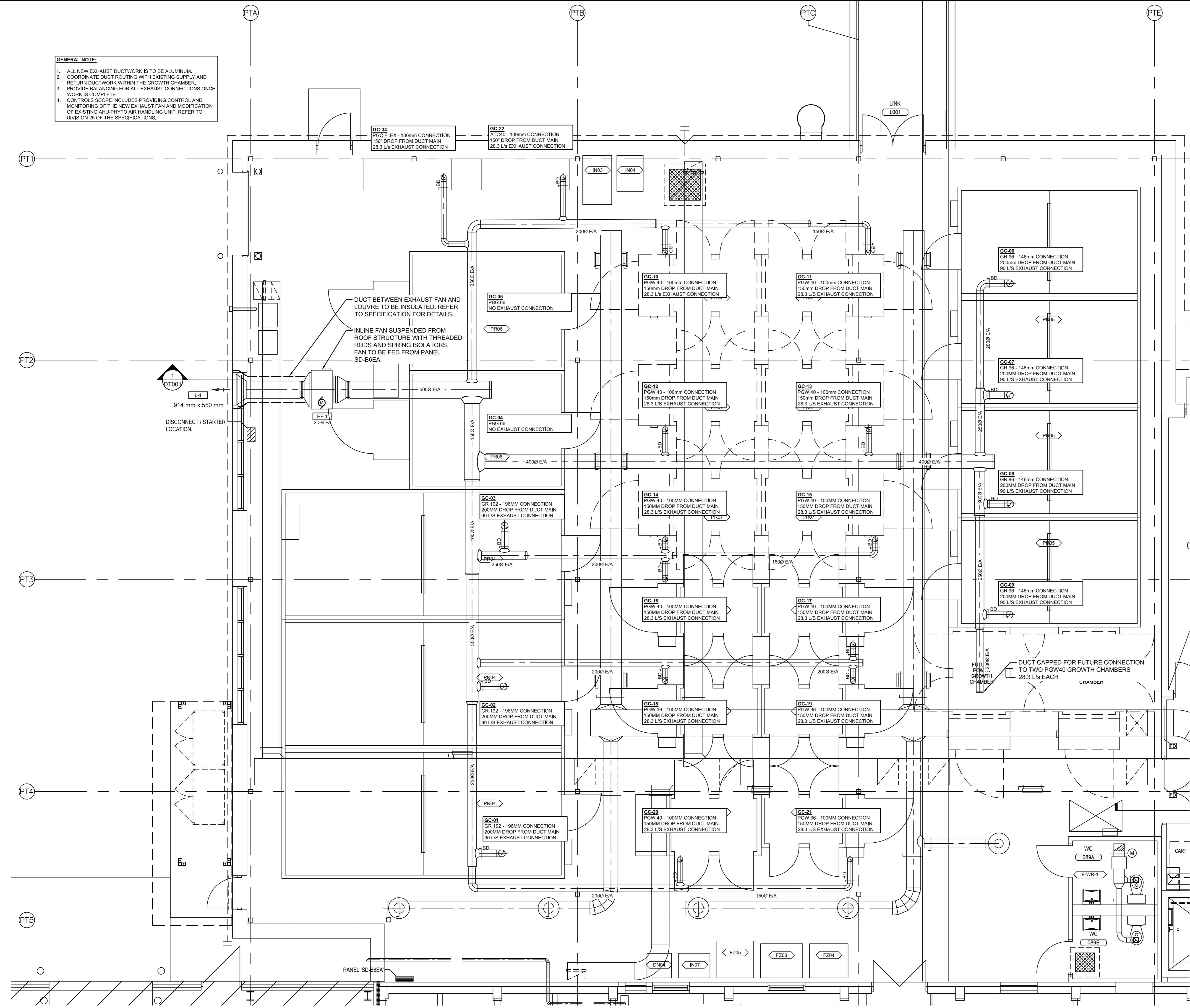
**AGRICULTURE AND AGRI-FOOD CANADA**  
SWIFT CURRENT, SASKATCHEWAN

Project Title/Titre du projet  
**SWIFT CURRENT RESEARCH AND DEVELOPMENT CENTRE**  
PHYTOTRON EXHAUST MODIFICATIONS  
SWIFT CURRENT, SASKATCHEWAN

Approved by/Approve par  
JP / JMS  
Designed by/Concept par  
JP / JMS  
Drawn by/Dessiné par  
GDR / JMS  
AAFC Project Manager/Administrateur de Projets AAFC  
S. WARD

Client/Client  
AAFC  
Drawing Title/Titre du dessin  
**BASEMENT FLOOR - PHYTOTRON GROWTH CHAMBER EXHAUST**

Project No./No. du projet  
WSP Project No. 122-1373-40  
AAFC Project No. 465-1-16-C44  
Sheet/Feuille  
**ME01**  
1 OF 2  
Revision no./La Révision no.  
**A**



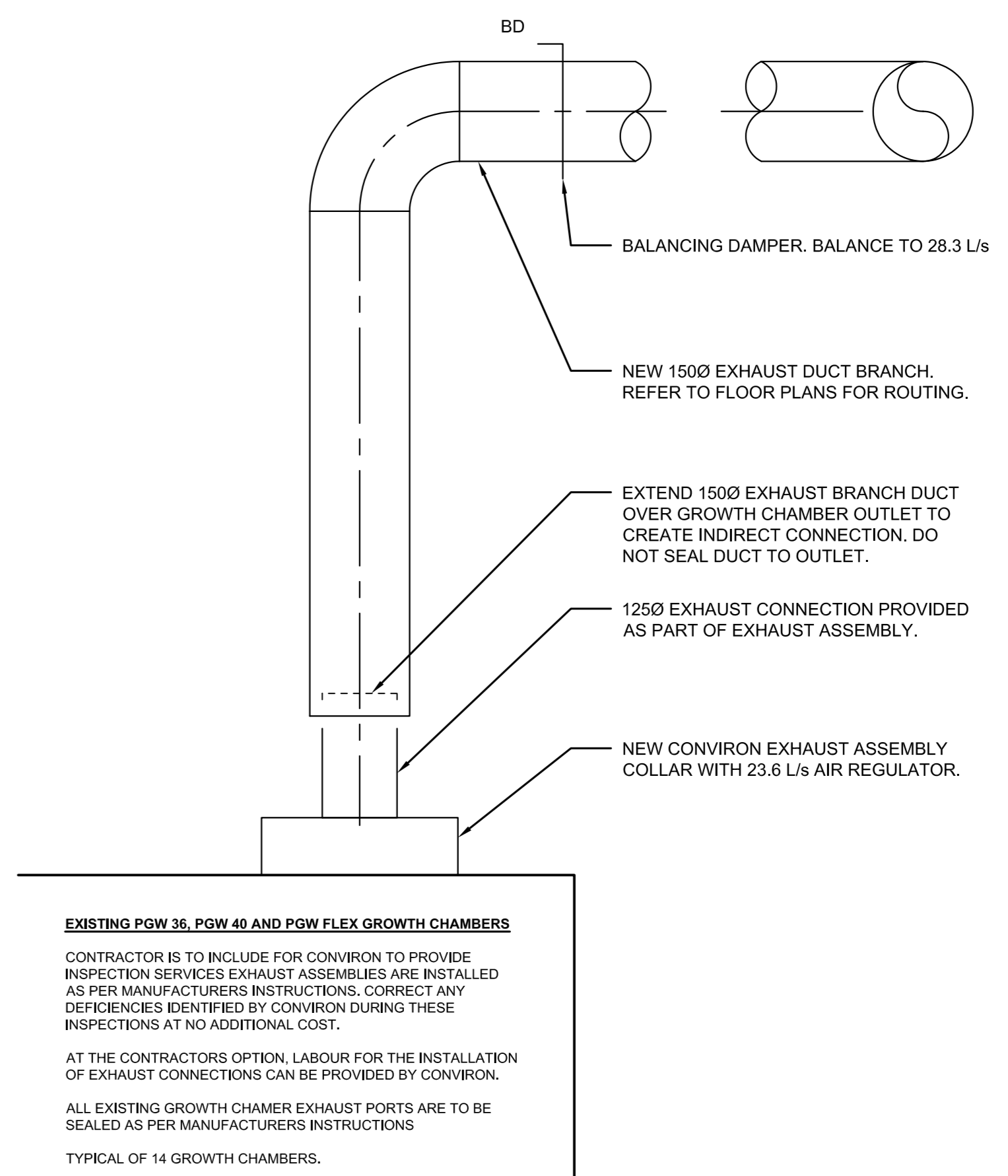
**1 BASEMENT FLOOR - PHYTOTRON EXHAUST DUCTWORK PLAN**

**GENERAL NOTE:**  
1. ALL NEW EXHAUST DUCTWORK IS TO BE ALUMINUM.  
2. COORDINATE DUCT ROUTING WITH EXISTING SUPPLY AND RETURN DUCTWORK WITHIN THE GROWTH CHAMBER.  
3. PROVIDE BALANCING FOR ALL EXHAUST CONNECTIONS ONCE WORK IS COMPLETE.  
4. CONTROL SCOPE INCLUDES PROVIDING CONTROL AND MONITORING OF THE NEW EXHAUST FAN AND MODIFICATION OF EXISTING INHALETO AIR HANDLING UNIT. REFER TO DIVISION 25 OF THE SPECIFICATIONS.

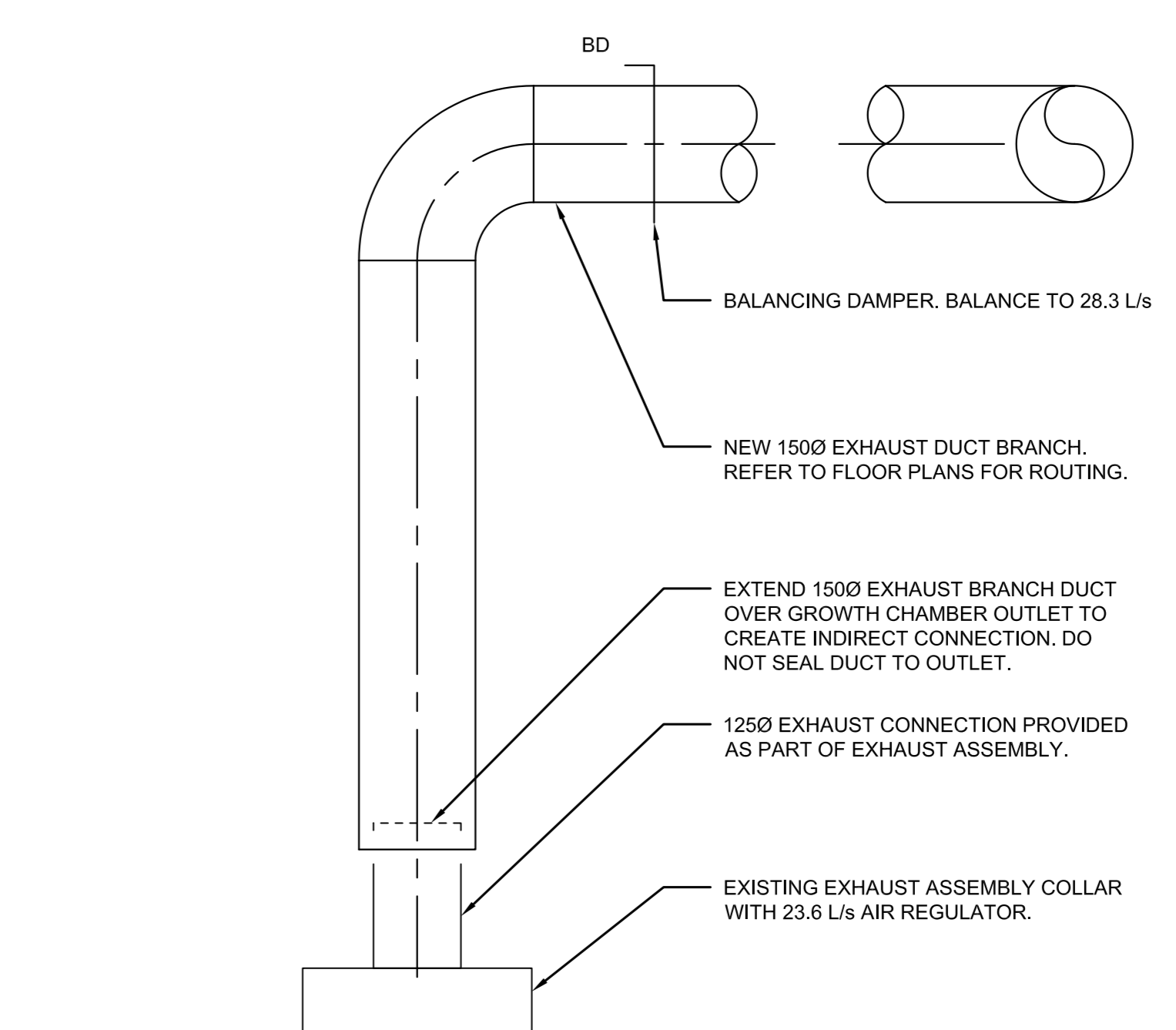
**EQUIPMENT SCHEDULE**

TAG	LOCATION	MANUFACTURER	MODEL	MECHANICAL				ELECTRICAL				REMARKS			
				FLOW RATE (CFM)	E.S.P. (IN)	WATTS	H.P.	VOLTS	FLA	MCA	PHASE		STARTER	FEEDERS	BREAKER
EF-1	BASEMENT	GREEKHECK	BSW-150	1180	248	745	1 H.P.	800V	1.7A	2.3A	3	F-INS (BY ELEC.)	(3) #12AWG + #12AWG/2.2mm CONDUIT	15A/1P	- ALUMINUM HOUSING - RECT DRIVE - MOTOR MOUNTED OUTSIDE OF AIR STREAM - VIBRATION ISOLATORS - PROVIDE WITH BACKCRAFT DAMPER - STARTER SUPPLIED AND INSTALLED BY ELEC.

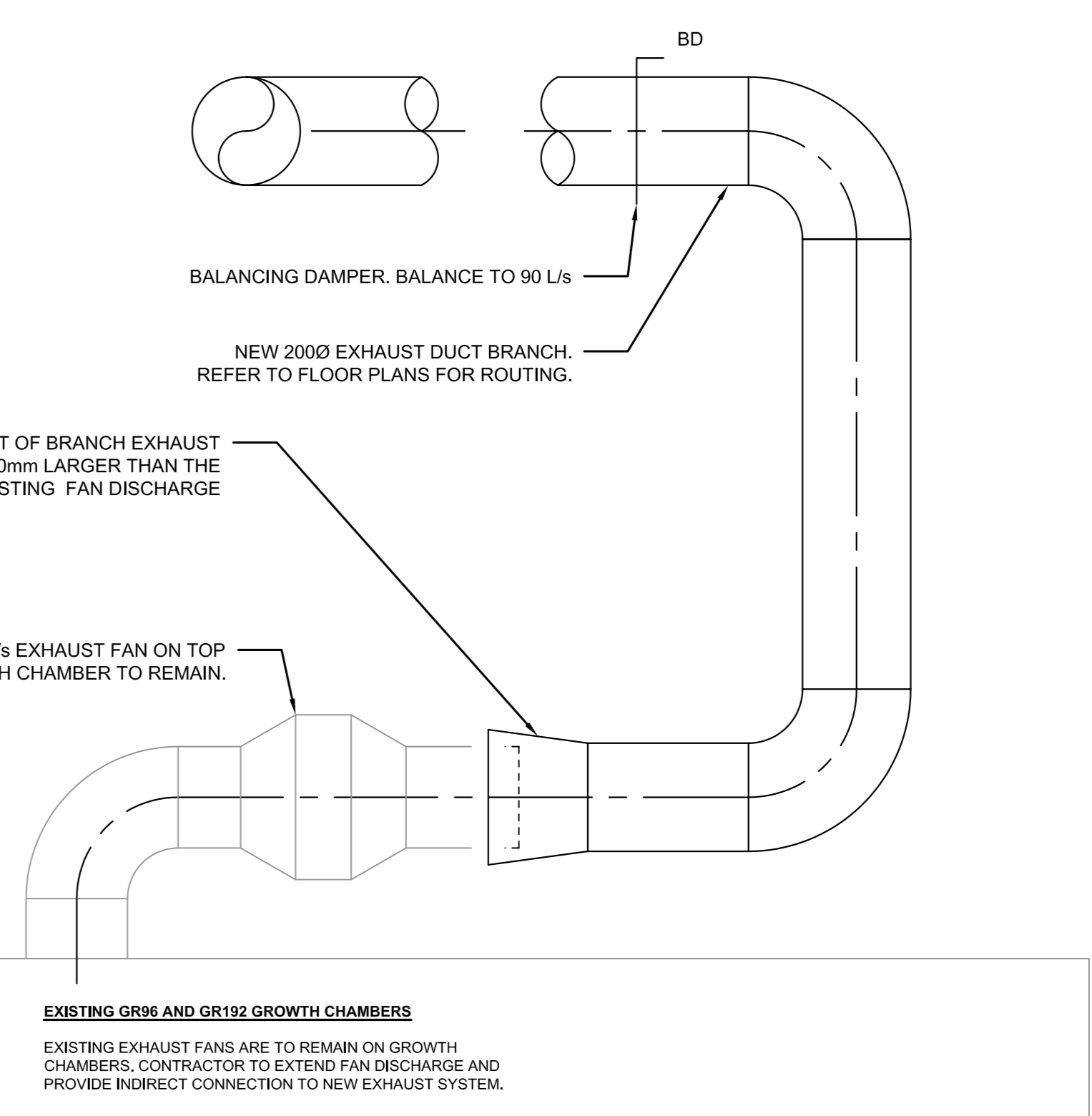
**LOUVRE: L-1**  
E.H. PRICE MODEL 635 ALUMINUM DRAINABLE BLADE LOUVRE. FINISH TO MATCH ADJACENT WINDOW FRAME. SIZE AS NOTED.



**2 PGW 36, PGW 40 AND PGW FLEX GROWTH CHAMBER CONNECTION DETAIL**



**3 ATC 40 AND PGW FLEX GROWTH CHAMBER CONNECTION DETAIL**



**4 GR 96 AND GR 192 GROWTH CHAMBER CONNECTION DETAIL**

