



**RETURN BIDS TO:**

**RETOURNER LES SOUMISSIONS À:**

Travaux publics et Services gouvernementaux  
Canada

Place Bonaventure, portail Sud-Oue

800, rue de La Gauchetière Ouest

7<sup>e</sup> étage, suite 7300

Montréal

Québec

H5A 1L6

FAX pour soumissions: (514) 496-3822

**SOLICITATION AMENDMENT  
MODIFICATION DE L'INVITATION**

The referenced document is hereby revised; unless otherwise indicated, all other terms and conditions of the Solicitation remain the same.

Ce document est par la présente révisé; sauf indication contraire, les modalités de l'invitation demeurent les mêmes.

**Comments - Commentaires**

**Vendor/Firm Name and Address**

Raison sociale et adresse du  
fournisseur/de l'entrepreneur

**Issuing Office - Bureau de distribution**

Travaux publics et Services gouvernementaux Canada

Place Bonaventure, portail Sud-Oue

800, rue de La Gauchetière Ouest

7<sup>e</sup> étage, suite 7300

Montréal

Québec

H5A 1L6

<b>Title - Sujet</b> Construction hangar et chenil	
<b>Solicitation No. - N° de l'invitation</b> EF937-210361/A	<b>Amendment No. - N° modif.</b> 011
<b>Client Reference No. - N° de référence du client</b> R.100341.001	<b>Date</b> 2020-09-01
<b>GETS Reference No. - N° de référence de SEAG</b> PW-\$MTC-035-15787	
<b>File No. - N° de dossier</b> MTC-0-43041 (035)	<b>CCC No./N° CCC - FMS No./N° VME</b>
<b>Solicitation Closes - L'invitation prend fin</b> <b>at - à 02:00 PM</b> <b>on - le 2020-09-10</b>	<b>Time Zone</b> <b>Fuseau horaire</b> Heure Avancée de l'Est HAE
<b>F.O.B. - F.A.B.</b> <b>Plant-Usine:</b> <input type="checkbox"/> <b>Destination:</b> <input type="checkbox"/> <b>Other-Autre:</b> <input type="checkbox"/>	
<b>Address Enquiries to: - Adresser toutes questions à:</b> Lussier, Joël	<b>Buyer Id - Id de l'acheteur</b> mtc035
<b>Telephone No. - N° de téléphone</b> (514) 708-3582 ( )	<b>FAX No. - N° de FAX</b> (514) 496-3822
<b>Destination - of Goods, Services, and Construction:</b> <b>Destination - des biens, services et construction:</b>	

Instructions: See Herein

Instructions: Voir aux présentes

<b>Delivery Required - Livraison exigée</b>	<b>Delivery Offered - Livraison proposée</b>
<b>Vendor/Firm Name and Address</b> <b>Raison sociale et adresse du fournisseur/de l'entrepreneur</b>	
<b>Telephone No. - N° de téléphone</b> <b>Facsimile No. - N° de télécopieur</b>	
<b>Name and title of person authorized to sign on behalf of Vendor/Firm</b> <b>(type or print)</b> <b>Nom et titre de la personne autorisée à signer au nom du fournisseur/</b> <b>de l'entrepreneur (taper ou écrire en caractères d'imprimerie)</b>	
<b>Signature</b>	<b>Date</b>

**INVITATION TO TENDER**  
Hangar construction and Kennel extension  
Rigaud, Que

**This amendment 011 is raised for :**

**Addition of addendum 02**  
**Addition of addendum 03**  
**Questions / Answers from bidders**

what will be the color of the garage doors ?  
R-The color of the garage doors will be supplied during construction.

what is the ceiling height ?  
R- See sections and elevations for ceiling heights.

**All other terms and conditions to the original solicitation remains unchanged.**



Travaux publics et  
Services gouvernementaux  
Canada

Public Works and  
Government Services  
Canada

## CANADA BORDER SERVICE AGENCY COLLEGE (CBSA)

### KENNEL EXPANSION AND CONSTRUCTION OF NEW TRAINING HANGAR

#### Public Services and Procurement Canada (PSPC)

Place Bonaventure - Portail Sud-Ouest

800, de La Gauchetière Street West

Office 7300

Montreal, Quebec

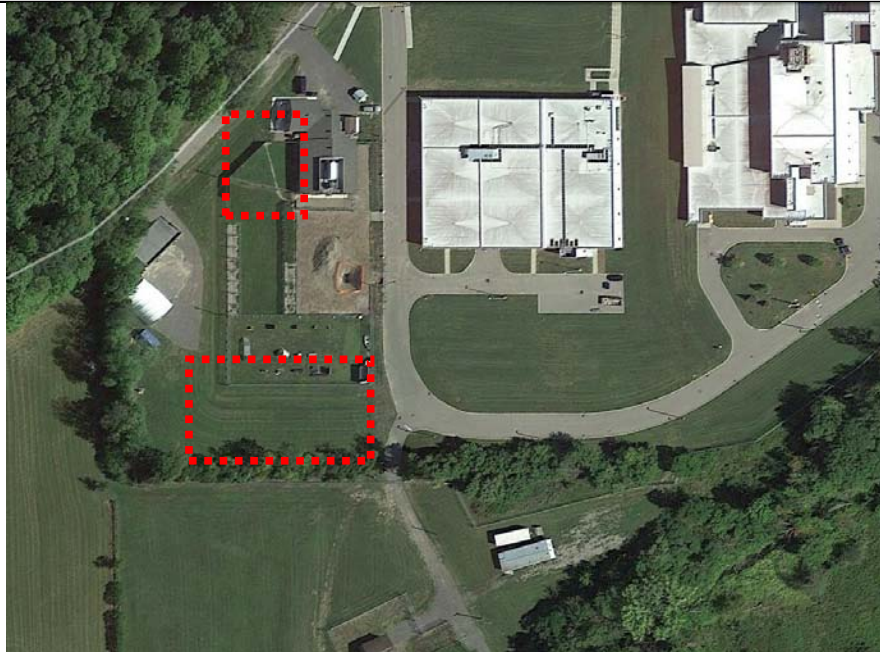
H5A 1L6

Client N°: R.100341.001

BBBL N°: P18-116

## ARCHITECTURAL ADDENDUM N° A-03

AUGUST 31<sup>TH</sup> 2020



"This addendum is part of the original drawings and specifications and should be considered an integral part of the contract documents. The work affected by this addendum conform to the original drawings and specifications, the general conditions, the modifications to general conditions and any addendum previously issued. Bidders will ensure that the cost of work affected by these addenda is reflected in the estimate."

## **1. ARCHITECTURAL SPECIFICATION**

### **1. Section 00 01 10 – Table of content**

1.1 Add the section 07 81 20 Interior intumescent coating

### **2. Section 04 22 00 – Concrete unit masonry**

2.1 In articles 2.1.1.3, 2.1.2.4 and 2.1.3.3, at the beginning of the first sentence, replace the words « provide square units » by « provide edge round corner ».

### **3. Section 07 81 20 – Interior intumescent coating**

3.1 Add the section attached to this addendum.

### **4. Section 09 00 10 – Finish schedule**

4.1 In remark section, add at the end of remark 4 : throughout the part with ceramic on the floor.

4.2 Add the remark 4 for the following rooms : E114, E116, E126 et E129.

### **5. Section 09 21 16 – Gypsum board**

5.1 Completely canceled paragraphs 2.2.12, 2.2.13 et 2.2.14.

**End of addendum A-03**

---

**Part 1 General****1.1 RELATED SECTIONS**

- .1 The specialized Contractor is responsible for obtaining a copy of all the sections of these specifications even if they do not appear to pertain to his speciality. If he does not, it shall be understood that he agrees to the clauses and requirements of all sections in these specifications. The specialized Contractor must consult the table of contents of these specifications to have knowledge of the complete list of the specifications sections, including all the engineering disciplines and architecture. Related sections are:
  - .1 Steel structure (Priming)
    - .1 Engineers' drawings
    - .2 Specifications division 05

**1.2 REFERENCES**

- .1 American Society for Testing and Materials International (ASTM)
  - .1 ASTM E119-12, Standard Methods of Fire Endurance Tests of Building Construction and Materials
- .2 Underwriter's Laboratories of Canada (ULC)
  - .1 CAN-ULC-S101-07, Standard Methods of fire Endurance Tests of Building Construction and Materials
- .3 Tested design repertory
  - .1 ULC Fire Resistance Directory, ITS/Warnock Hersey Directory, UL Fire Resistance Volume 1 and Factory Mutual Approval Guide

**1.3 SUBMITTALS**

- .1 Provide submittals in accordance with section 01 33 00 – submittal procedures.
- .2 Product Data
  - .1 Submit manufacturer's printed product literature, specifications and datasheet and include product characteristics, performance criteria, physical size, finish and limitations.
- .3 Submit tested design reports.
  - .1 The retained design must be appropriate to be applied to columns and beams identified on site. Any beam which upper flange is not touching the underside of the concrete slab must be evaluated as a column as per ULC and UL results available.

**1.4 QUALITY INSURANCE**

- .1 Manufacturer: specialized in the fabrication in the prescribed products of this section, bearing ULC/UL appropriate homologations.
  - .2 Installer-contractor: accredited beforehand by fireproof material manufacturer.
-

- .3 Products: manufactured to ULC/UL, and ULC program or Warnock Hersey. Each containers must bear ULC/UL or Warnock Hersey labels.
- .4 Inspection: Ministerial Representative will retain services from and independent laboratory to test at unidentified location the intumescent product thickness. AWCi Technical Manual 12-B document will be the reference for the inspection method. This inspection must be undertaken prior to the paint finish.

**1.5 RULING AGENCY PRESCRIPTIONS**

- .1 In conformity to the fire resistance standards prescribed on drawings.
- .2 Submit conformity certifications of the fireproofed materials installed.

**1.6 DELIVERY, STORAGE AND HANDLING**

- .1 Deliver and store materials in their originals containers, sealed and undamaged, in a dry condition, at more than 10°C, above ground, manufacturer's identification tabs and seals intact. Protect from frost. Do not store under sun.
- .2 Discard materials that have been in contact with contaminants. .

**1.7 SITE PREVAILING CONDITIONS**

- .1 Do not apply coating when steel and ambient air temperature is under 10oC. If heating is required, use electrical heating apparel.
- .2 Insure room ventilation when this section prescribed products are applied and for at least 24 hour after last coat of coating or protective paint application completion .
- .3 Relative humidity must be under 75% during the whole time of application and curing of the intumescent coating and under 65% during the decorative protecting finish application. It is recommended to maintain relative humidity between 40 to 60%.

**1.8 WORK SCHEDULING**

- .1 Present work, including touch-ups, must be executed before other trades products installation.

**1.9 WASTE MANAGEMENT AND DISPOSAL:**

- .1 Separate waste materials for recycling in accordance with Section 01 74 21 - Construction/Demolition Waste Management and Disposal.

**Part 2 Products****2.1 MATERIALS**

- .1 Water base intumescent fireproofing coating.
-

- .2 Silicone-alkyd base protective paint.
- .3 Touch-up paste: for on site minor repairs, without spraying apparel.

## **2.2 RELATED MATERIALS TO CONTROL**

- .1 Primer: Any industrial or commercial primer that has been recognise by the fireproofing coating manufacturer as compatible. Consult the primers list that has been identified as compatible.

## **Part 3 Execution**

### **3.1 FIRE RESISTANCE LEVELS**

- .1 As prescribed on drawing.

### **3.2 STEEL UNITS AND THEIR SURFACES EXAMINATION**

- .1 Remove from the steel surfaces to be fireproofed dust, dirt, grease, and all other deleterious substance that could interfere with the intumescent fireproofing coating adhesion.
- .2 Inspect steel these steel surfaces and report any defect that could affect the work of the present section. Identification marks to be written in grease crayon to facilitate their removal before intumescent coating application.
- .3 Make certain that steel surfaces are ready to receive the coating. It is recommended, as minimal measure, to proceed with a commercial sand blasting (SSPC-SP6/NACE no. 3). Welding burr must be smooth grinded before application.
- .4 Ensure that surfaces are compatible with fireproofing materials before their application – see 2.2.1.
- .5 The starting of application understate the substrate acceptance by default.

### **3.3 MASKING AND PROTECTION**

- .1 Protect surfaces and surrounding equipment from over spraying.

### **3.4 APPLICATION, HANDLING, AND TRANSPORT**

- .1 Apply fireproofing product as per manufacturer application method, complying to the appropriate number of coats to obtain the required and chosen ULC, UL, ITS Warnock Hersey ou Factory Mutual tested design final thickness. Comply with the curing period between each coat.
  - .2 Spayed application is recommended for any visible surface as to obtain a relatively smooth finish.
  - .3 For any reputable difficult space to spray, proceed with manual troweling application so to obtain the appropriate maximal thickness per coat. Remove irregularities and buff unequal surfaces to obtain a surface that is as smooth as possible. A variation in the surface at the meeting of a spayed and troweled surface is foreseen. Spray over all these areas to obtain a uniform visual texture.
-

- .4 Apply paint by spay, brush, or roller.

**3.5 SITE REPAIRS**

- .1 Patch damage to fireproofing caused by other trades. Cost of repairs settled by the contractor, will be
- .2 Applicator may use touch-up paste for minor repairs (up to 0.1 m<sup>2</sup>). Except for very small area to correct, touch-up paste repair must comply with the same application regulations per coat as the sprayed intumescent base coating.

**3.6 CLEANING**

- .1 Remove any trace of fireproofing material from any surfaces that must not be fireproof.
- .2 On completion and verification of performance of installation, remove surplus materials, excess materials, rubbish, tools and equipment.

**3.7 WORK SCHEDULE**

- .1 Submit an execution schedule when project prescriptions present a variety of surfaces, fire resistance levels, and thickness.

**END OF SECTION**

---