



## **RFP 9F030-20200174**

# **Demolition and removal of the D.S. Kennedy Radio Astronomy Antenna Addendum #1**

The closing date for the Tender is extended to September 17<sup>th</sup> 2020 at 10 am.

The project completion date is extended to December 15<sup>th</sup> 2020.

A cash allowance of up to 10 000\$ will be provided for the assessment, removal and disposal of any Asbestos Containing Material found within the construction scope upon contract award. After project kickoff, the bidder is to provide a breakdown of these costs in terms of subcontractor quotes, internal labour rates and disposal costs where applicable. The allowance is strictly for the asbestos removal. The cost for the assessment will be taken from the allowance. If the assessment produce a negative report, the bidder cannot use the allowance for some other cost. If the asbestos removal ends up costing more than the allowance, CSA will not raise the allowance and the extra cost will need to be absorbed by the main budget. It is the responsibility of the bidder to elaborate the most economic strategy to deal with the asbestos, if it is present.

The tender contains two pricing options, CSA will rank the submissions for each pricing option individually. The pricing option chosen will be based on policy decisions. Bidders do not have to submit prices for both cost options contained in the RFP but do so at the risk of not being considered for the option lacking a submission by them.

Electrical demolition consists of removal of all conduit and cabling back to the source which is transformer in close proximity to the dish.

The concrete pad to the east of the tower is to be removed as part of the scope of the projects.

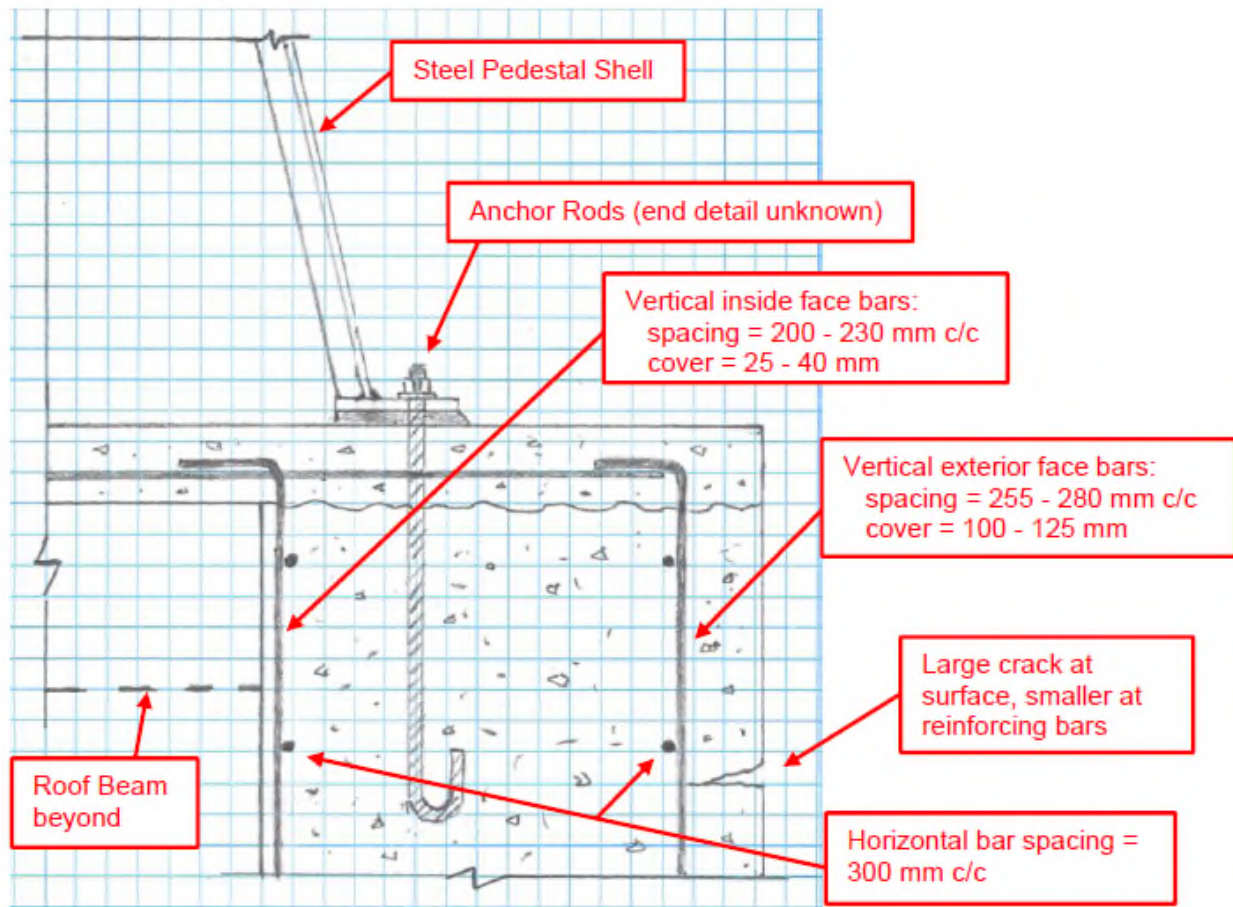
Existing drawings from the original construction of the dish are not available. Approximate dimensions are provided below:

Height of structure – Approximately 24.m to 27.4m

Width of Dish Section – 18.3m

Octagonal Concrete foundation walls – 813mm thick

Sketch of wall profile below:



**Schematic Detail of Concrete Base Roof-to-Wall Joint**

The depth of the concrete base is not known. To limit this unknown, the contractor is expected to include the breakdown and removable of all concrete foundations associated with the antenna up to 1m below grade. There are 8 buried anomalies positioned roughly 3m from each corner of the concrete base of the antenna that are likely associated with the structure and must be included in the scope of the demolition bid to a depth of 1m below grade.

For pricing option #2, the dish shall be disassembled into the component parts shown in the original patent submission, found here: <https://patents.google.com/patent/US2997712>. Deviations from this breakdown, due to corrosion, or varying as built conditions are to be brought forth to the project authority prior to demolition for approval. The feed antenna can be broken down into 5 approximately equal size portions. The counterweights are each to remain intact as well as the drive section. The pedestal section can be broken down into 16 equal sized parts. Everything below the pedestal section is to be demolished and removed from site.

Additional Site pictures for reference in Appendix to this document.