

FLOOR PLAN
1:100

FORCE FLOW SCHEDULE (BASED ON TRANE)
BASED ON 11.1 °C (20 °F) WTD

- FF-1 - MODEL 06, CAPACITY 15.2 kW, AIR FLOW (HIGH SPEED) 264 L/S, EWT 82.2 °C, FLOW 0.32 L/S, ARR N-46 SEMI-RECESSED, INTEGRAL SPEED SWITCH, REMOTE THERMOSTAT
- FF-2 - MODEL 02, CAPACITY 5.6 kW, AIR FLOW (HIGH SPEED) 104 L/S, EWT 82.2 °C, FLOW 0.13 L/S, ARR N-46 RECESSED, INTEGRAL SPEED SWITCH, REMOTE THERMOSTAT
- FF-3,4,5 - MODEL 03, CAPACITY 7.6 kW, AIR FLOW (HIGH SPEED) 142 L/S, EWT 82.2 °C, FLOW 0.13 L/S, ARR M-46 INTEGRAL SPEED SWITCH, REMOTE THERMOSTAT

LOCATIONS

- FF-1 VESTIBULE, 1.01
- FF-2 CORRIDOR, 1.16
- FF-3 CORRIDOR, 1.15
- FF-4 SEARCH & RESCUE, 1.12
- FF-5 CORRIDOR, 1.24

EXHAUST FAN SCHEDULE

- EF-1 WASHROOM EXHAUST FAN - DELHI 409, 236 L/S (500 cfm), .09 kPa (.375" wg) ESP, .19 kW (1/4 HP) C/W FLEX CONNECTIONS AT INLET AND OUTLET, C/W SPRING ISOLATORS.
- EF-2 LUNCH ROOM/CONFERENCE ROOM EXHAUST - GREENHECK SP-117, .03 kPa (.125" wg) ESP, 90 L/S (190 cfm), C/W INLET GRILLE, C/W BACKDRAFT-DAMPER AT FAN, C/W WALL CAP AND BACK DRAFT DAMPER.
- EF-3 BATTERY STORAGE EXHAUST - GREENHECK BSQ-7-4, 118 L/S (250 cfm), .06 kPa (.25" wg) ESP, .19 kW (1/4 HP) C/W FLEX CONNECTIONS AT INLET AND OUTLET, C/W SPRING ISOLATORS. FAN OF SPARK-PROOF CONSTRUCTION C/W EXPLOSION PROOF MOTOR.
- EF-4 ELECT WKSHP EXHAUST FAN - GREENHECK SP-108, .03 kPa (.125" wg) ESP, 47 L/S (100 cfm), C/W INLET GRILLE, C/W BACKDRAFT DAMPER AT FAN, C/W WALL CAP AND BACK DRAFT DAMPER.
- EF-5 VEHICLE MAINTENANCE EXHAUST FAN - GREENHECK BSQ-10-4, .09 kPa (.375" wg) ESP, 0.19 kW (1/4 HP), 460 L/S (975 cfm), C/W BELT GUARD, REMOVABLE FAN AND MOTOR PANEL, C/W 100 LONG FLEX CONNECTIONS AT INLET AND OUTLET.
- EF-6 VEHICLE MAINTENANCE TAILPIPE EXHAUST - CHICAGO BLOWER, SQA SIZE 8 3/4 DIRECT DRIVE, 283 L/S (600 cfm) AT 0.62 kPa (2.5" wg) ESP, 0.38 kW MOTOR (1/2 HP), C/W FLEX CONNECTIONS AT INLET AND OUTLET, C/W SPRING ISOLATORS. NEDERMAN #600460 SPRING OPERATED REEL AND HOSE ASSEMBLY, C/W 800262 HOSE EXTENSION, C/W 803161 ADAPTOR NOZZLE, 5.0 METER REEL AND HOSE ASSEMBLY C/W 2.5 METER HOSE EXTENSION - 100 mm HOSE. NOZZLE - 100 mm RUBBER END WITH CLAMP ON ADAPTOR.
- EF-7 HEATED STORAGE EXHAUST - GREENHECK BSQ-12-7, .09 kPa (.375" wg) ESP, 0.38 kW (1/2 HP), 944 L/S (2000 cfm), C/W BELT GUARD, REMOVABLE FAN AND MOTOR PANEL, C/W 100 LONG FLEX CONNECTIONS AT INLET AND OUTLET.
- EF-8 BUOY MAINTENANCE EXHAUST FAN - SAME AS EF-5
- EF-9 PAINT SPRAY EXHAUST FAN - REFER TO PAINT SPRAY BOOTH SPECIFICATION
- EF-10 CRAWL SPACE EXHAUST FAN - DELHI #407, .12 kPa (.5" wg) ESP, 0.19 kW (1/4 HP), 165 L/S (350 cfm), MTD AS HIGH AS POSSIBLE C/W SPRING ISOLATOR MTG AND FLEX CONNECTION.
- EF-11 WELDING EXHAUST FAN SYSTEM - NEDERMAN 2.0 M SWING BOOM ARM WITH 3.0 M ADJUSTABLE 150# HOSEARM COMPLETE WITH HOOD, LIGHT PACKAGE, WALL MTD CONTROL PANEL AND 361 L/S - .75 kW MOTOR.
- EF-12 ELECTRICAL ROOM EXHAUST - BROAN #509 THRU - WALL EXHAUST FAN C/W GRILLE. WIRE FAN TO THE COOLING THERMOSTAT TO CYCLE FAN ON TEMPERATURE RISE.

WALL FIN CONVECTOR TYPE 12S - ENCLOSURE (BASED ON TRANE)
1 ROW 32mm COPPER ALUMINUM

- 1 - FIN LENGTH 1219mm, COVER LENGTH AS SHOWN, C/W DAMPER, CAPACITY 1.9 kW, @ 82.2 °C A.W.T.
- 2 - FIN LENGTH 1829mm, COVER LENGTH 2000 mm, C/W DAMPER, CAPACITY 2.8 kW, @ 82.2 °C A.W.T.
- 3 - FIN LENGTH 3962mm, COVER LENGTH AS SHOWN, C/W DAMPER, CAPACITY 6.0 kW, @ 82.2 °C A.W.T.
- 4 - FIN LENGTH 1676mm, COVER LENGTH AS SHOWN, C/W DAMPER, CAPACITY 2.5 kW, @ 82.2 °C A.W.T.
- 5 - FIN LENGTH 3658mm, COVER LENGTH AS SHOWN, C/W DAMPER, CAPACITY 5.6 kW, @ 82.2 °C A.W.T.
- 6 - FIN LENGTH 1524mm, COVER LENGTH AS SHOWN, C/W DAMPER, CAPACITY 2.3 kW, @ 82.2 °C A.W.T.
- 7 - FIN LENGTH 610mm, COVER LENGTH 1200 mm, C/W DAMPER, CAPACITY 0.9 kW, @ 82.2 °C A.W.T.
- 8 - FIN LENGTH 610mm, TRANE TYPE "X" ENCLOSURE, CAPACITY 0.9 kW, @ 82.2 °C A.W.T.

LOCATIONS

- 1 - SUPERVISOR, 1.02, OFFICE STORAGE, 1.05A, SHIPPING STORAGE, 1.18
- 2 - MAP/RADIO, 1.03
- 3 - GENERAL OFFICE, 1.05
- 4 - SECURITY STORAGE, 1.17
- 5 - LUNCH/CONFERENCE, 1.11
- 6 - SEARCH & RESCUE, 1.12, BASE MGR., 1.10, TECHNICIAN, 1.14
- 7 - ELECT WKSHP, 1.13, CORRIDOR, 1.09, 1.20
- 8 - WOMEN'S SHOWER, 1.06, MEN'S SHOWER, 1.08

DIFFUSER SCHEDULE

NUMBER	LPS	TYPE	SIZE	NECK	MODEL	MFG
100	100	SUPPLY	305 X 305	200	SCD/3P/S/B13	EH-PRICE
110	110	SUPPLY	305 X 305	200	SCD/3P/S/B13	EH-PRICE
120	95	SUPPLY	305 X 305	200	SCD/3P/S/B13	EH-PRICE
130	70	SUPPLY	305 X 305	150	SCD/3P/S/B13	EH-PRICE
140	60	SUPPLY	305 X 305	150	SCD/3P/S/B13	EH-PRICE
150	80	SUPPLY	305 X 305	200	SCD/3P/S/B13	EH-PRICE
160	65	SUPPLY	305 X 305	150	SCD/3P/S/B13	EH-PRICE
170	95	SUPPLY	305 X 150	200	AMD/3P/4C/B13	EH-PRICE
180	24	SUPPLY	1525 X 25	150	PB 50/MCS	EH-PRICE
190	50	EXHAUST	200 X 150	150	NM/80/-/7/SC/B13	EH-PRICE
200		RETURN	610 X 305		TB/80/-/7/B13	EH-PRICE
D.G.		DOOR GRILLE	450 X 450		STG/B13	EH-PRICE

NOTE:

ALL SOFFIT GRILLES TO BE EH PRICE GG L 96 A PC15 SITE PAINTED - COLOUR SELECTION BY ENGINEER

UNIT HEATER SCHEDULE (BASED ON TRANE)
BASED ON 15.55 °C (60 °F) EAT, 11.1 °C (20 °F) WTD

- UH-1 MODEL 80-S, CAPACITY 8.0 kW, AIRFLOW, EWT 82.2 °C, FLOW 0.18 L/S
- UH-2 MODEL 70-S, CAPACITY 9.4 kW, AIRFLOW, EWT 82.2 °C, FLOW 0.21 L/S

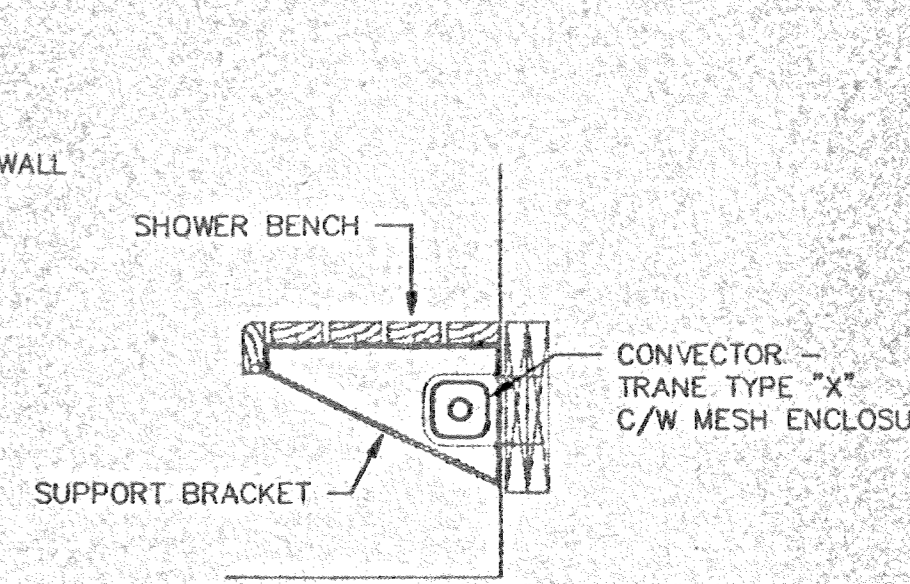
LOCATIONS

- UH-1 BATTERY STORAGE, 1.25
- UH-2 ELECTRICAL / MECHANICAL, 1.19

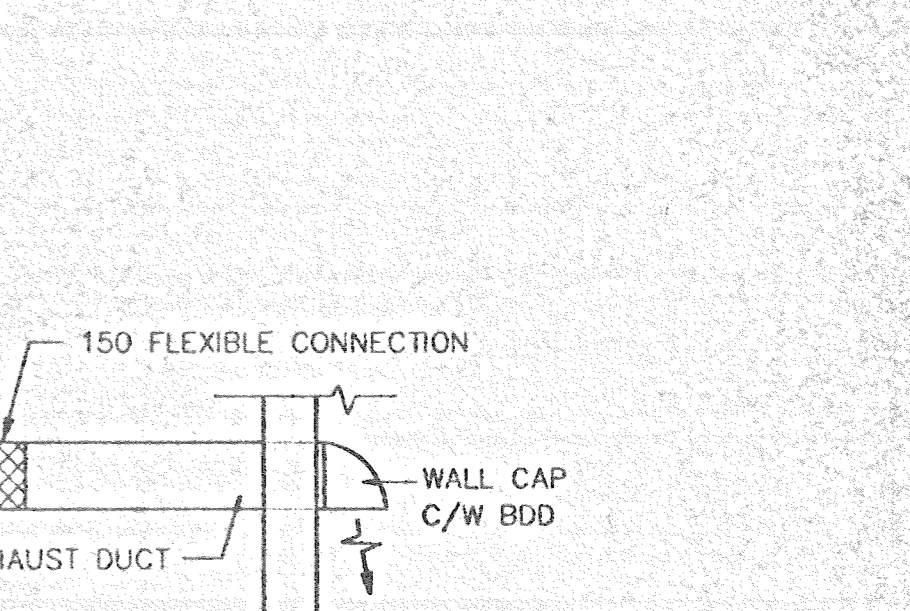
PUMPS

- P-1 - MAIN HEATING
- P-2 - MAIN HEATING
- P-3 - DOMESTIC HOT WATER RECIRC.
- P-4 - HEATING COIL RECIRC.
- P-5 - SEWAGE
- P-6 - SEWAGE

COMBUSTION AIR DETAIL
N.T.S.



TYPICAL DETAIL AT B/B #8
N.T.S.



TYPICAL CEILING EXHAUST FAN DETAIL
N.T.S.

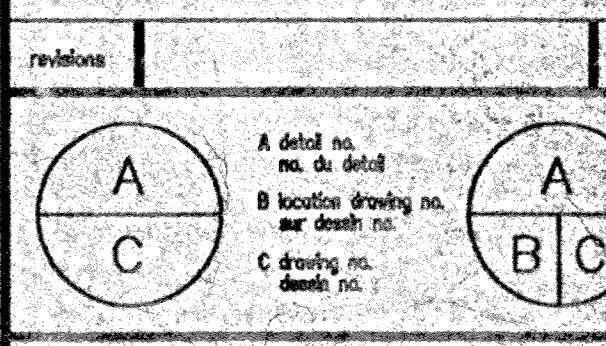


LEGEND

SW	SANITARY DRAIN BELOW GND	GV	GLOBE VALVE
SAN	SANITARY DRAIN ABOVE GND	BV	BALL VALVE
DCW	DOMESTIC COLD WATER	3-WAY	3-WAY CONTROL ACTUATOR
DHW	DOMESTIC HOT WATER	SAFETY	SAFETY VALVE
CA	COMPRESSED AIR	PRV	PRESSURE REDUCING VALVE
G	GAS, NATURAL	CV	CHECK VALVE
D	DRAIN CONDENSATE	DV	DRAIN VALVE
HWS	HOT WATER SUPPLY	LGC	LUBRICATED GAS COCK
HWR	HOT WATER RETURN	BV	BALANCING VALVE
RL	REFRIGERANT LINE	SAD	SUPPLY AIR DUCT RISER
UP	PIPING UP	RDR	RETURN DUCT RISER
PD	PIPING DOWN	SDR	SUPPLY DUCT DOWN
FD	FLOOR DRAIN	RDR	RETURN DUCT DOWN
WM	WATER METER	ED	EXHAUST DUCT DOWN
FDD	FUNNEL FLOOR DRAIN	FD	FIRE DAMPER
CO	CLEAN OUT	MD	MOTORIZED DAMPER
S	STRAINER	BDD	BACKDRAFT DAMPER
F	FILTER W/ CARTRIDGE	HB	HOSE BIBB
AV	AIR VENT	FE	PORTABLE FIRE EXTINGUISHER, SURFACE MOUNTED
P	PUMP	FER	PORTABLE FIRE EXTINGUISHER, RECESSED
PI	PUMP INDICATOR	TC	THERMOSTAT, GENERAL
AS	AIR SEPARATOR	TC	TEMPERATURE GAUGE
PR	PRESSURE REDUCING REGULATOR	AV	AUTOMATIC VALVE
PG	PRESSURE GAUGE		
CW	C/W PET COCK		
U	UNION		
CE	CAPPED END		
GV	GATE VALVE		
GS	GATE VALVE/W SOLENOID ACTUATOR		

- NOTE:**
- SEE TYPICAL EXHAUST VENT - ROOF PENETRATION DETAIL - DWG W-M3.
 - SEE TYPICAL EXHAUST DUCT - ROOF PENETRATION DETAIL - DWG W-M3.
 - ALL PIPING SIZES NPS UNLESS OTHERWISE NOTED.
 - REMOVE TWO FULL SECTIONS OF LINEAR CEILING FINISH RECESSED SLOTS FOR RETURN AIR.

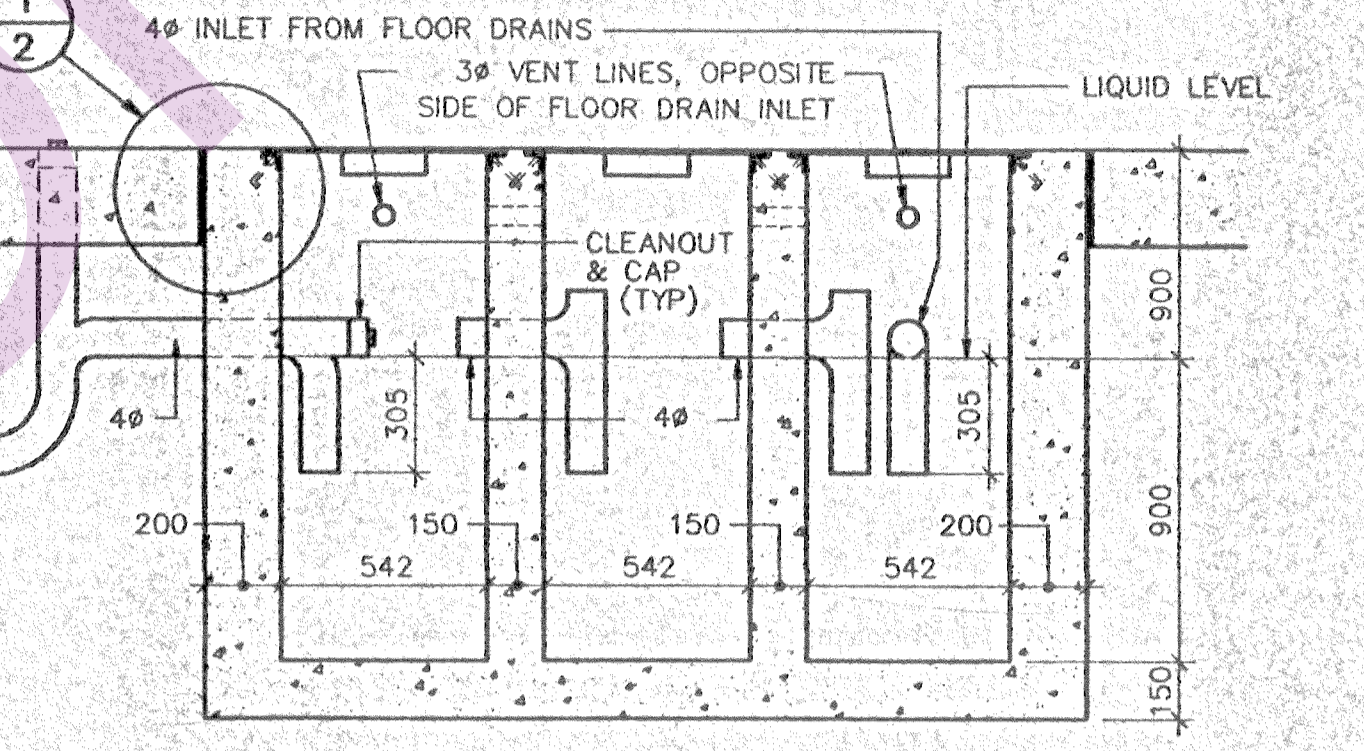
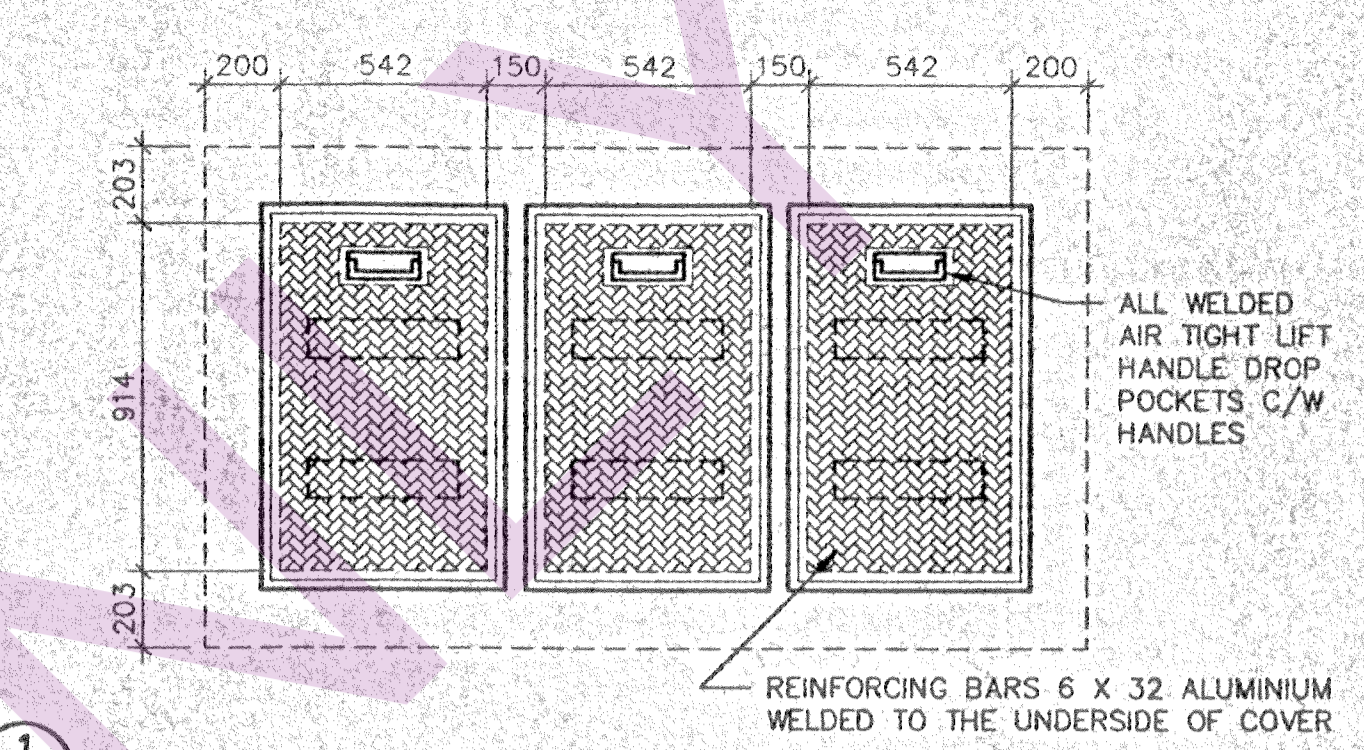
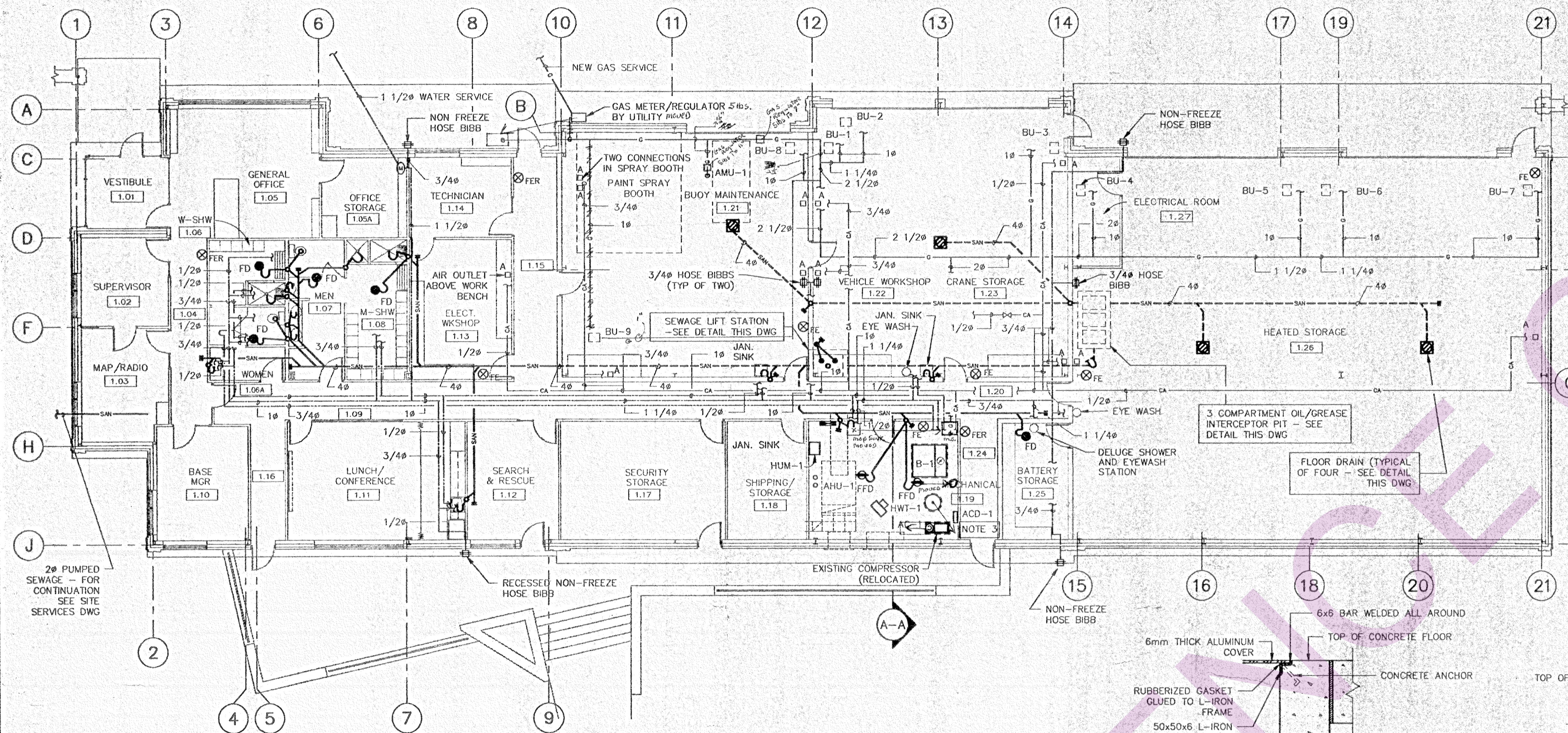
AS-BUILT DWGS
CHECKED JUN 2 1992
RED LABEL CONSTRUCTION CO. LTD.
1771-F BESS AVE. WPG. MAN. R3 0E2
PHONE: (204) 832-7783



SELKIRK, MANITOBA
CANADIAN COAST
GUARD BASE

FLOOR PLAN HEATING LAYOUT MECHANICAL

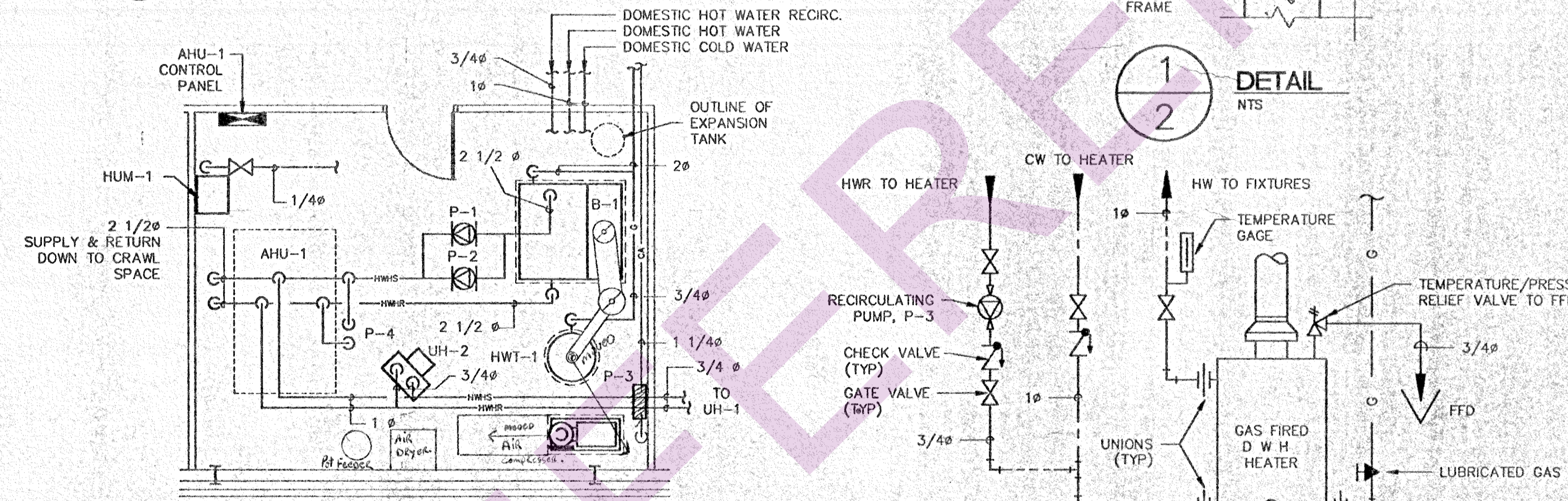
1S
NOVEMBER, 1992
AP
781359
W-M1



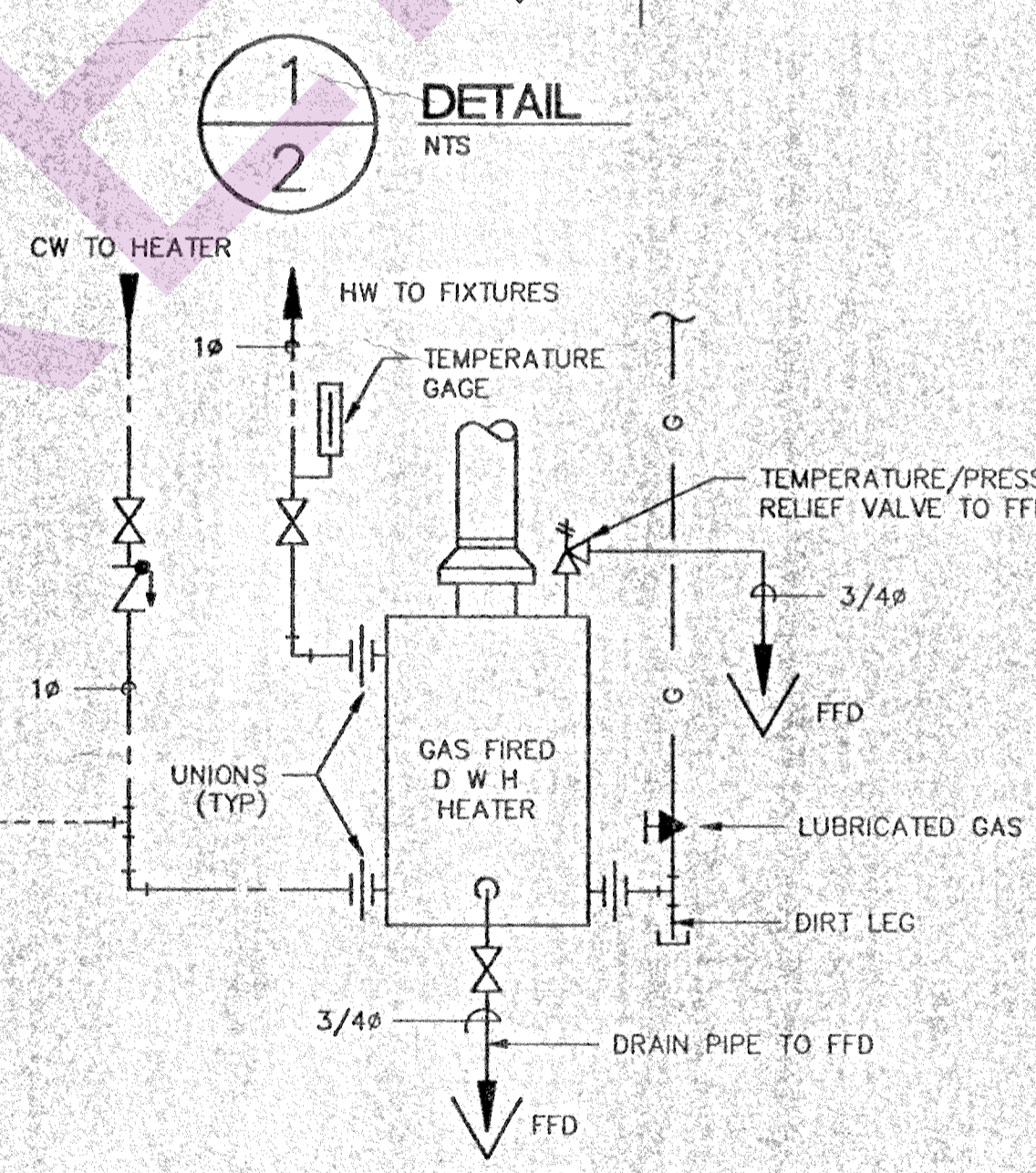
3 CELL OIL INTERCEPT PIT - DETAIL
N.T.S.

- NOTE
1. SEE BOILER SCHEMATIC THIS DWG.
 2. SEE DHW HEATER CONNECTIONS SCHEMATIC THIS DWG.
 3. SEE AIR COMPRESSOR PIPING SCHEMATIC THIS DWG.
 4. ALL PIPE SIZES NPS UNLESS OTHERWISE NOTED.

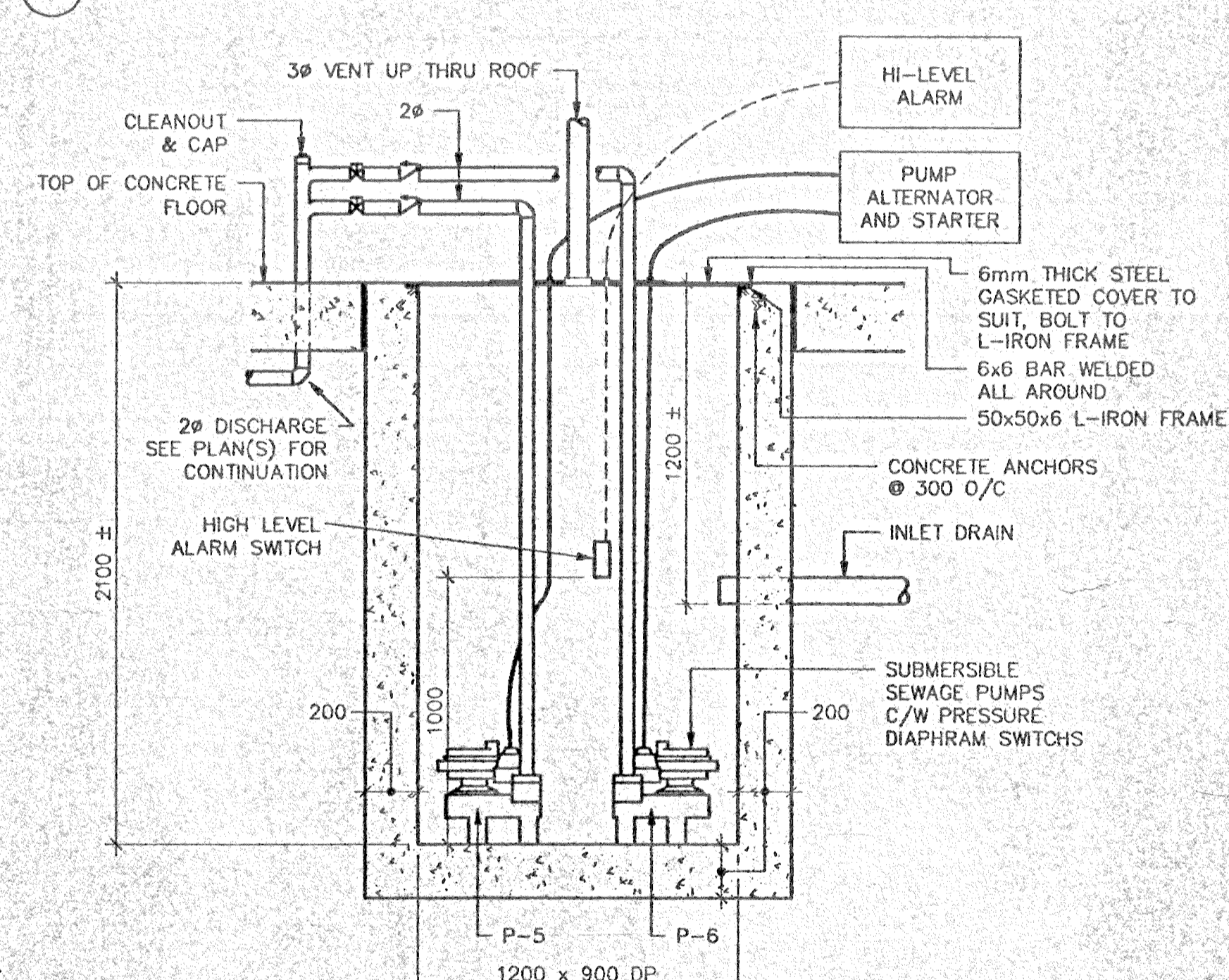
FLOOR PLAN
1:100



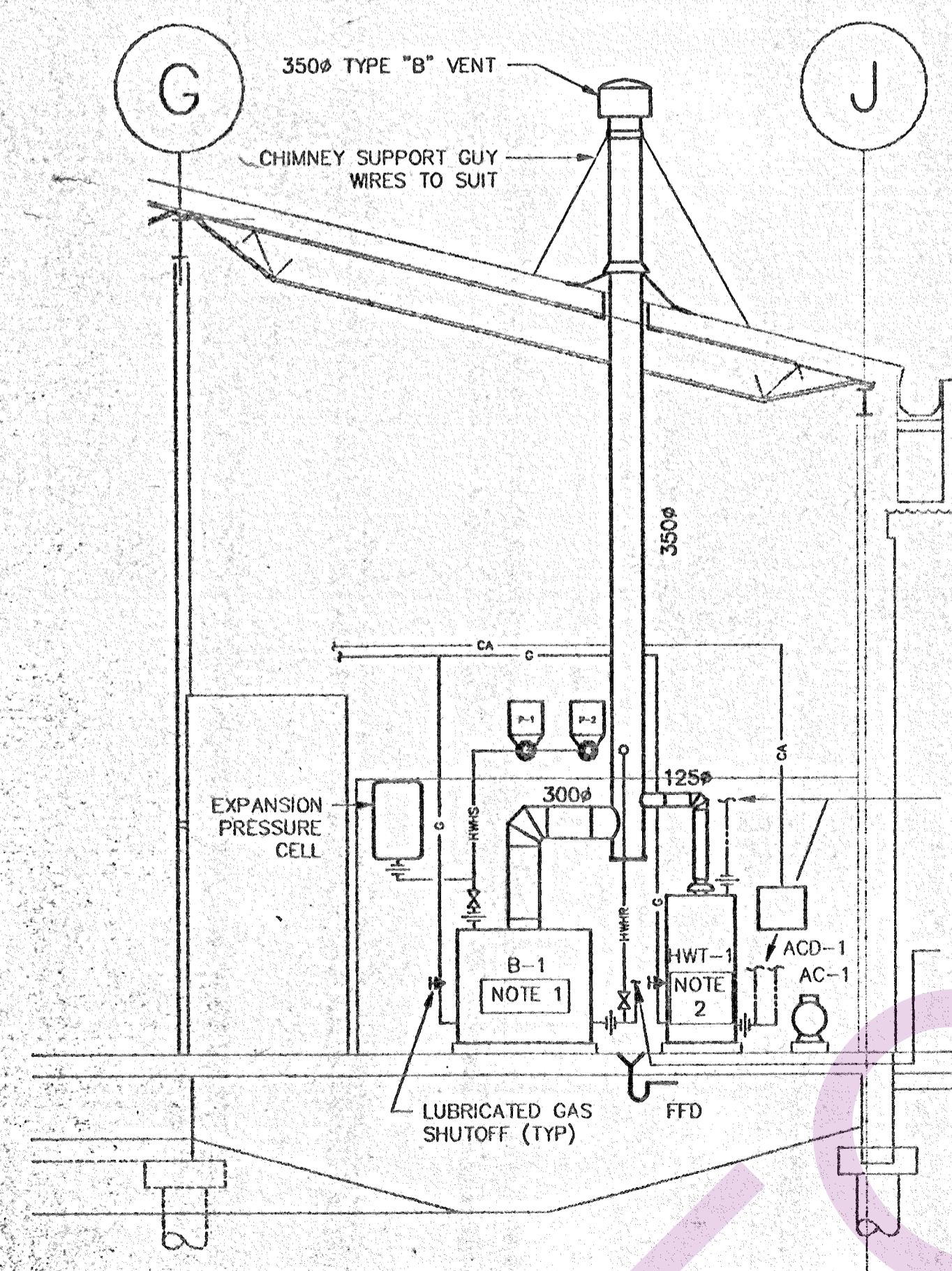
MECHANICAL ROOM PLAN
1:100



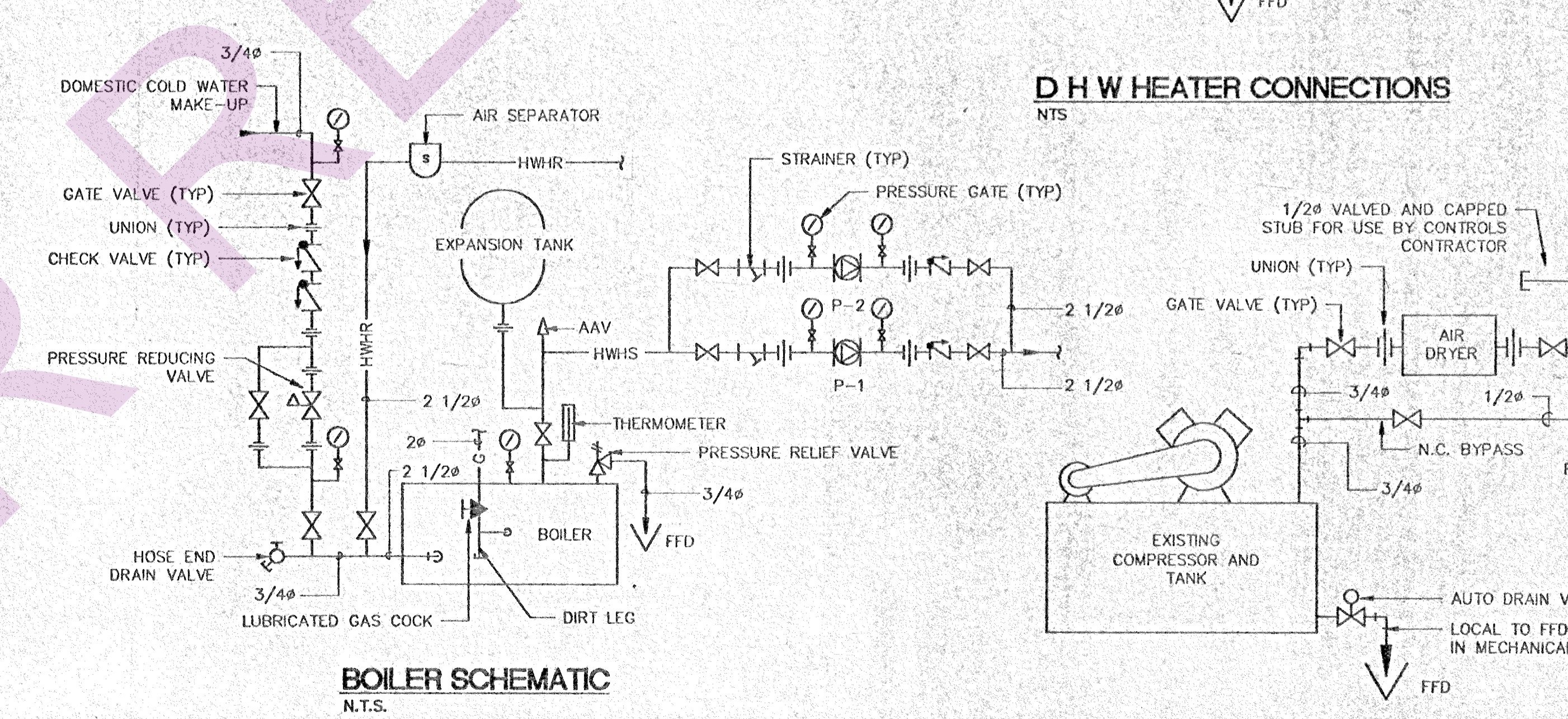
D H W HEATER CONNECTIONS
N.T.S.



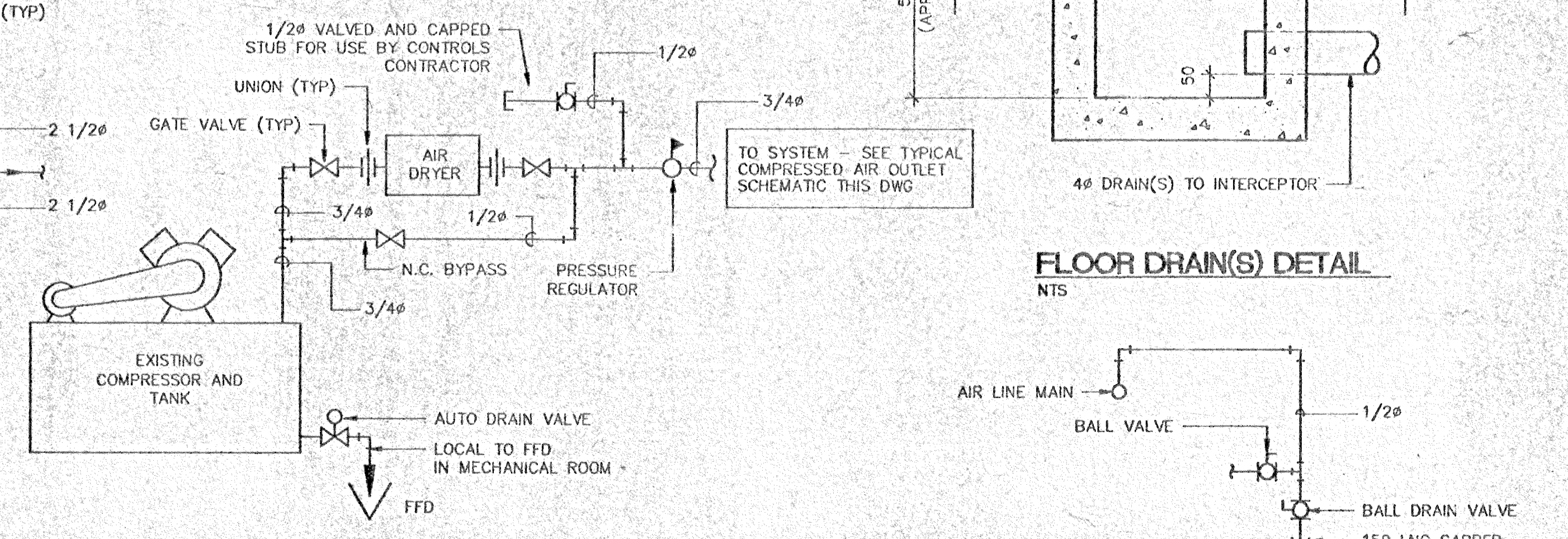
SEWAGE PIT DETAIL
N.T.S.



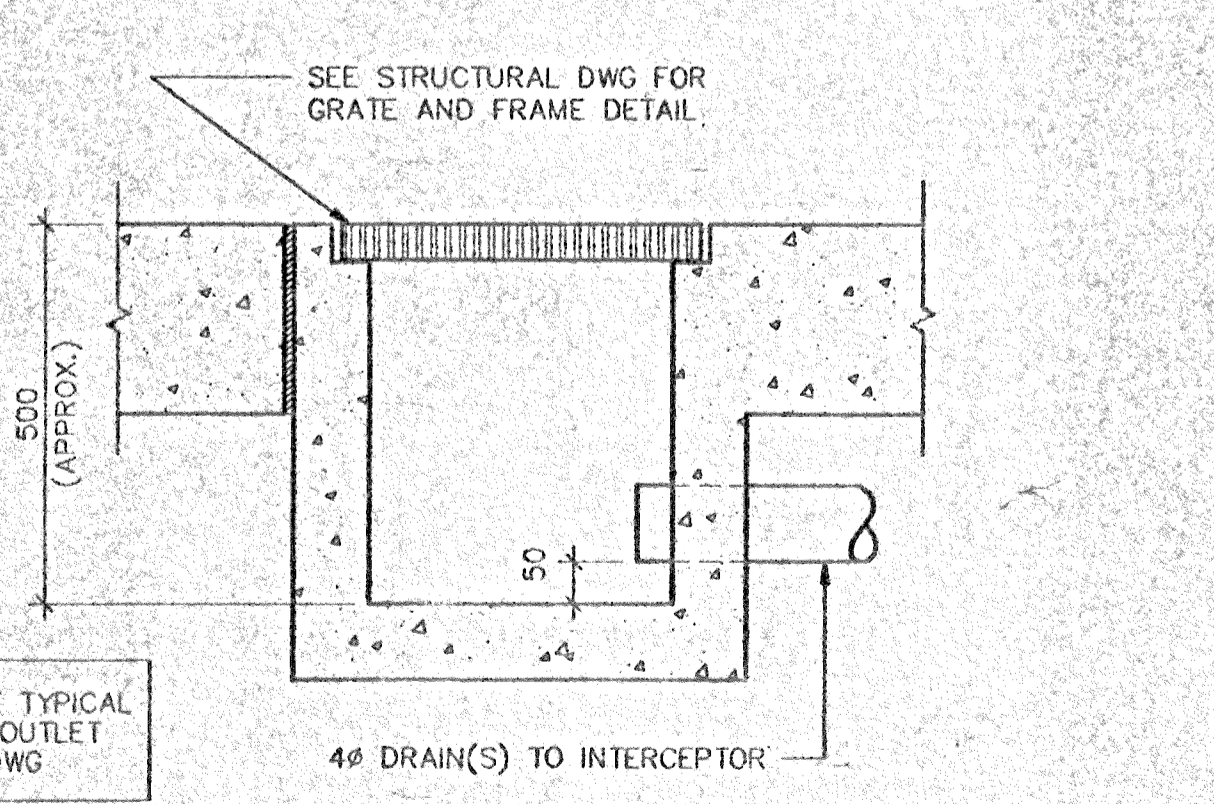
MECHANICAL ROOM SECTION A-A
1:100



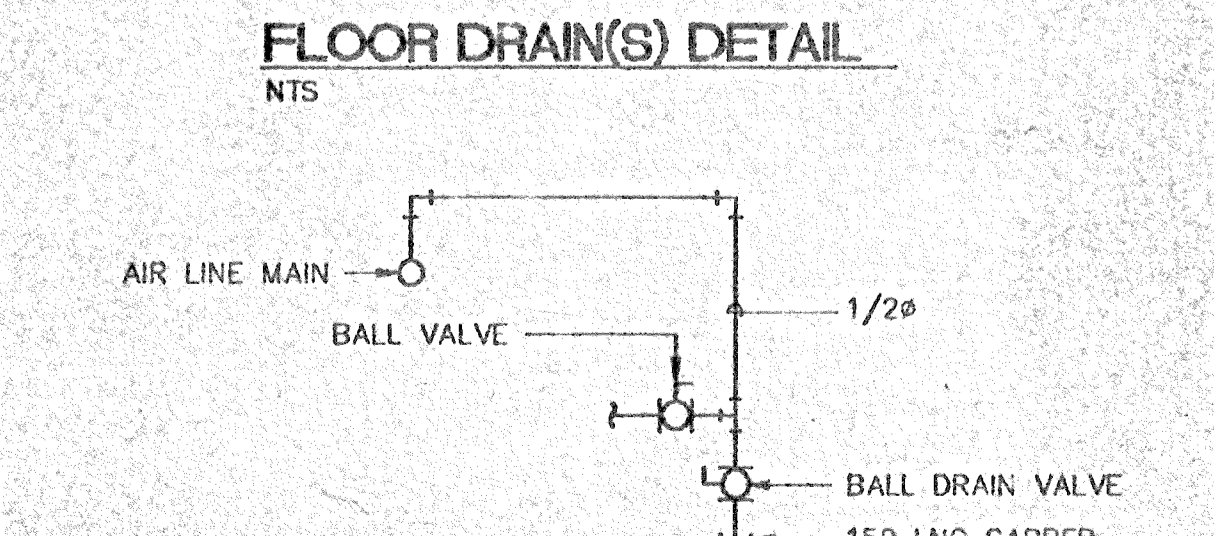
BOILER SCHEMATIC
N.T.S.



AIR COMPRESSOR PIPING SCHEMATIC
N.T.S.



TYPICAL COMPRESSED AIR OUTLET SCHEMATIC
N.T.S.



FLOOR DRAIN(S) DETAIL
N.T.S.

AS-BUILT DWGS
CHECKED JUN 27 1994
RED LAKE CONSTRUCTION CO. LTD.
1771 - F. BESS AVE. W. WILSON, SK1 0Y3
PHONE: (204) 832-7763

revision	date
A	A detail no. as of date
C	B revised drawing on our draft no.
	C drawing no. sheet no.

project

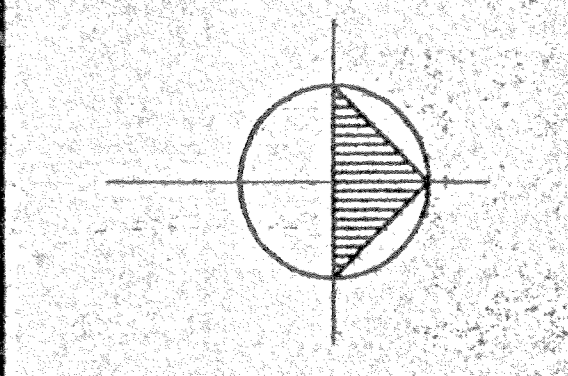
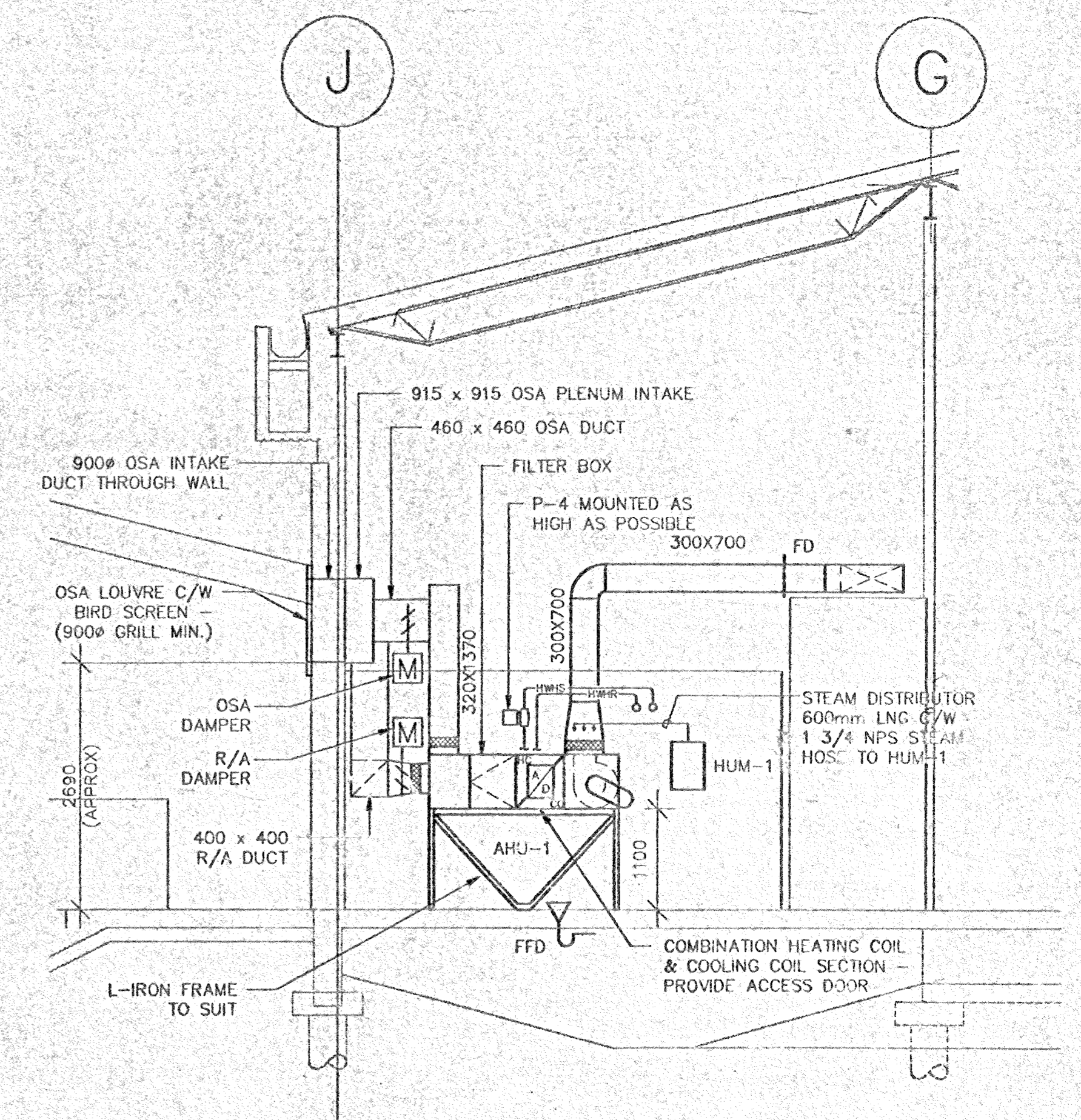
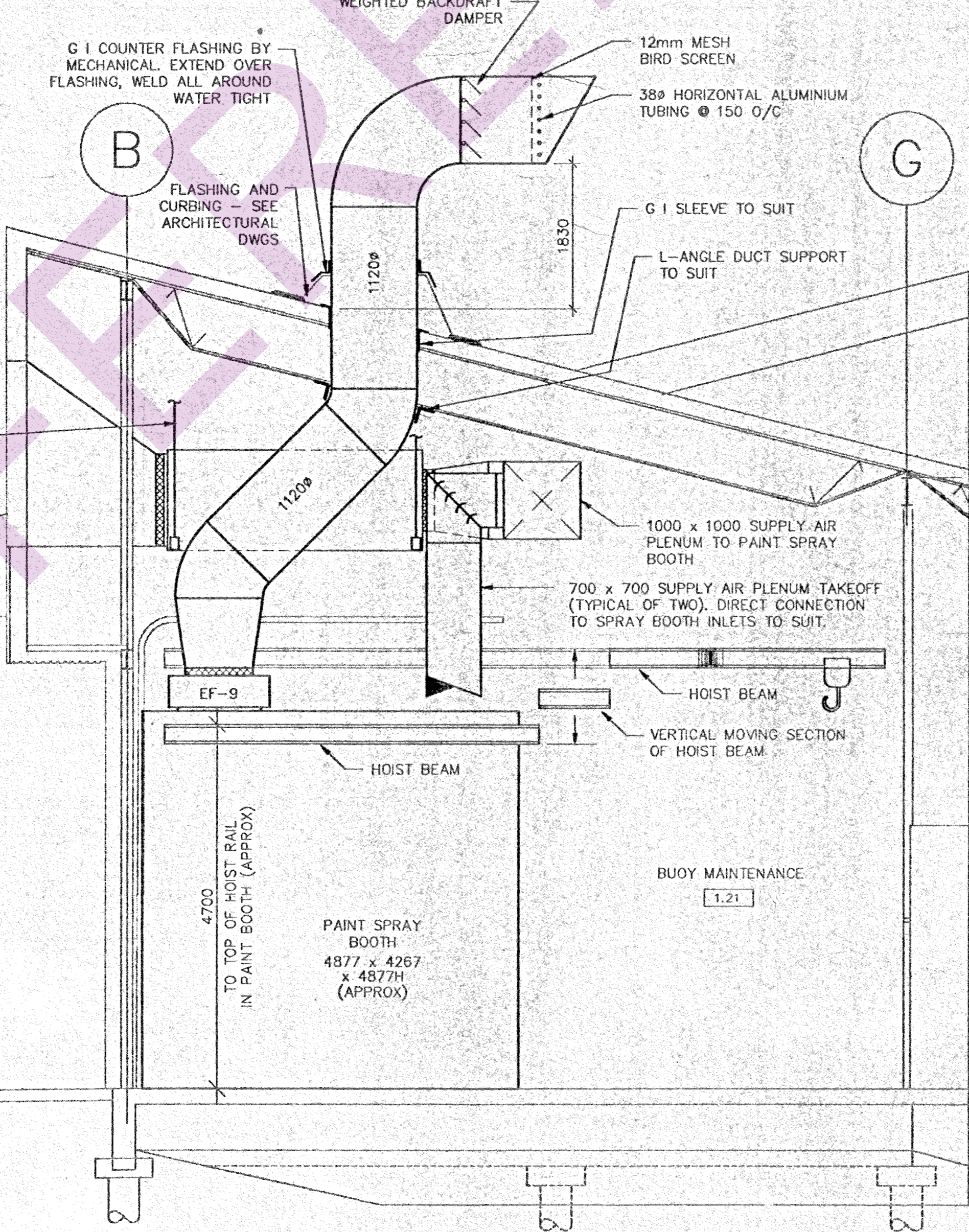
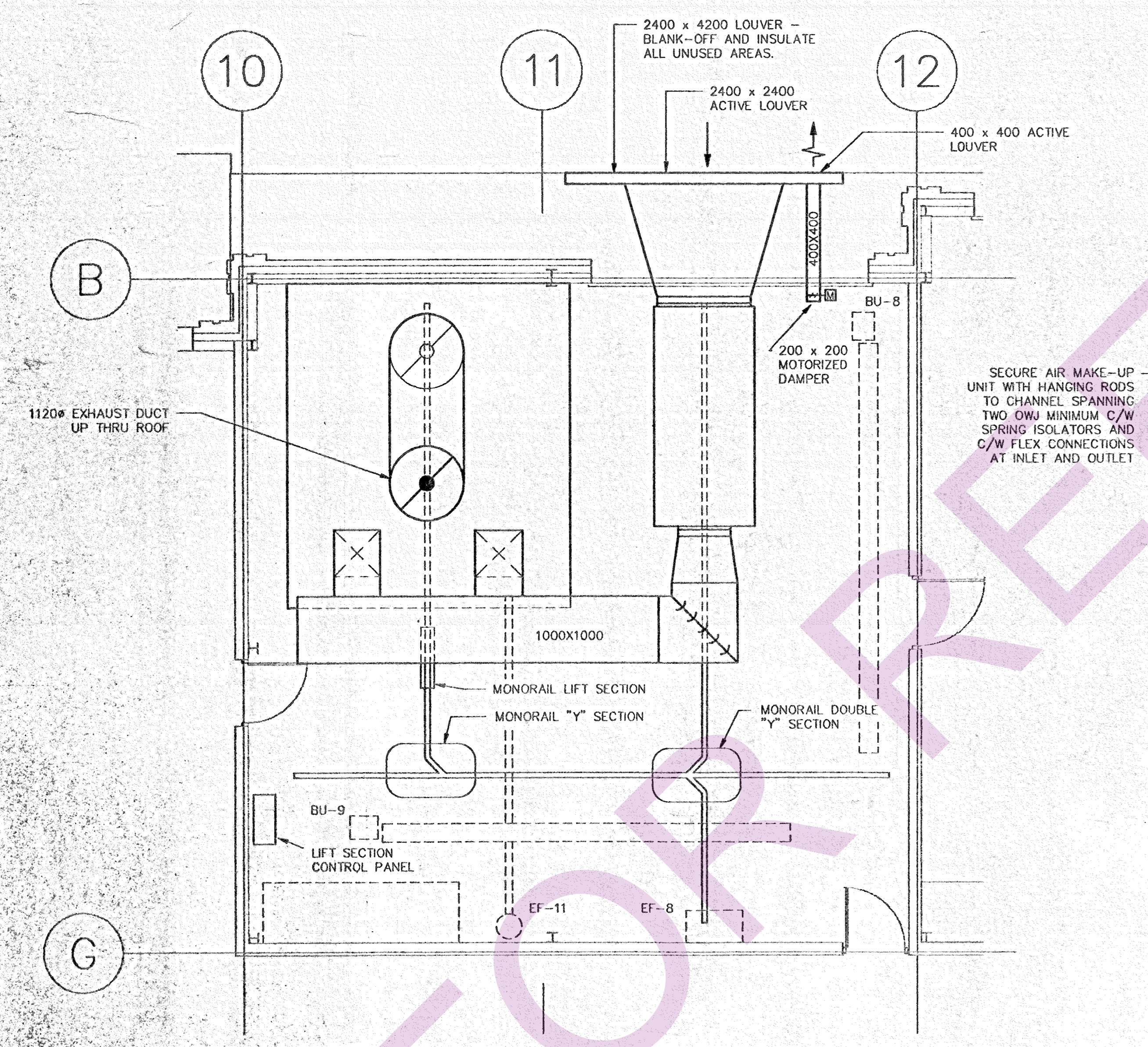
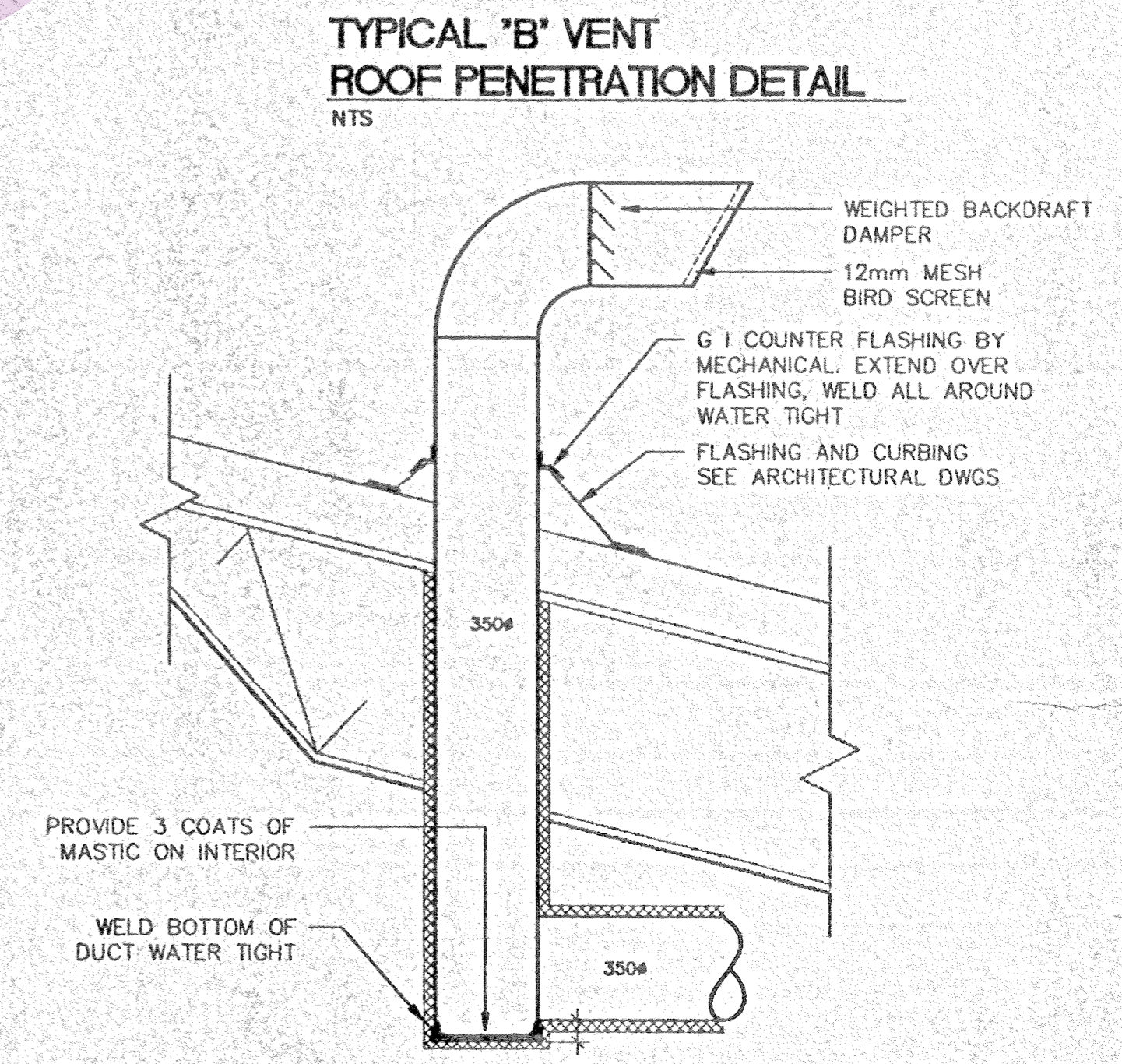
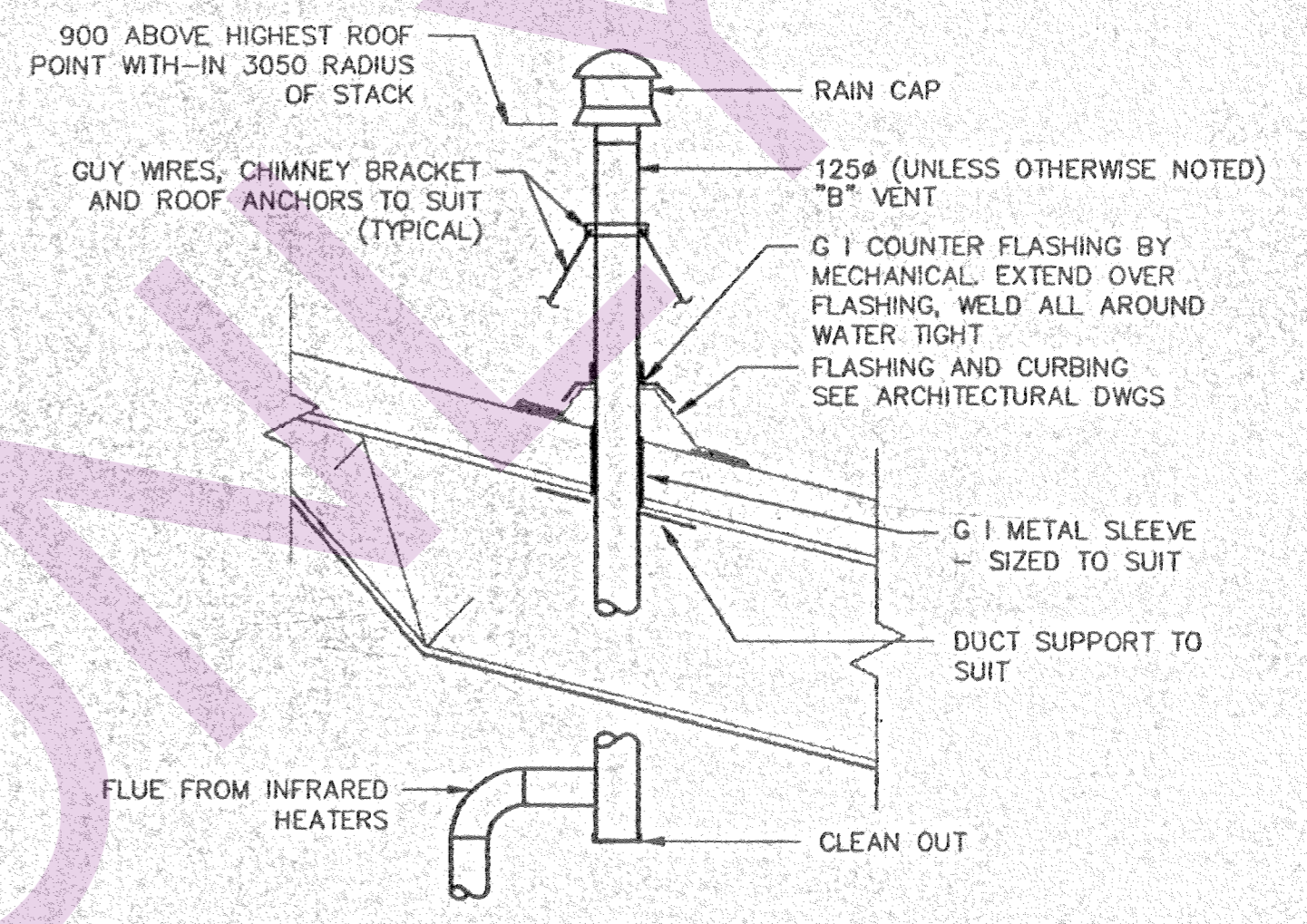
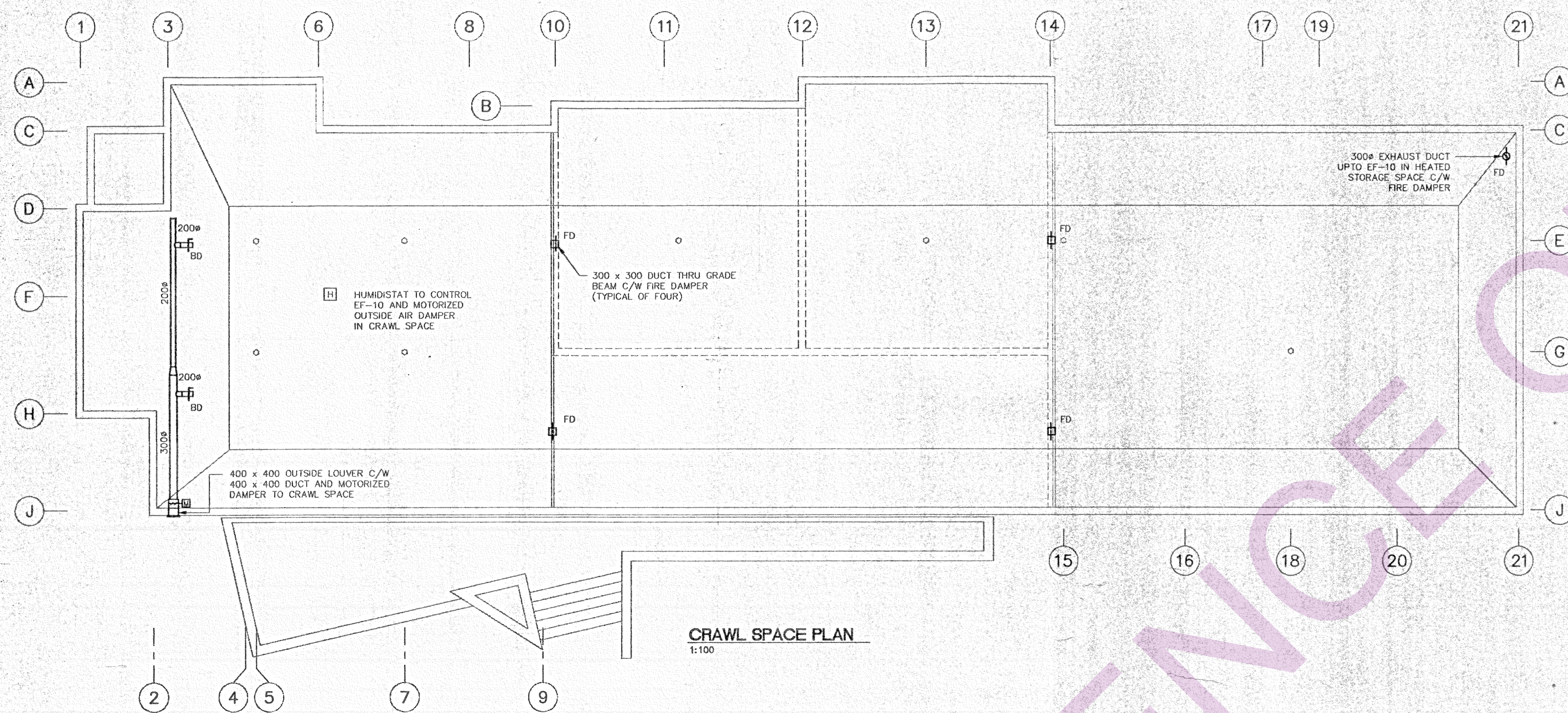
SELKIRK, MANITOBA

CANADIAN COAST GUARD BASE

drawing

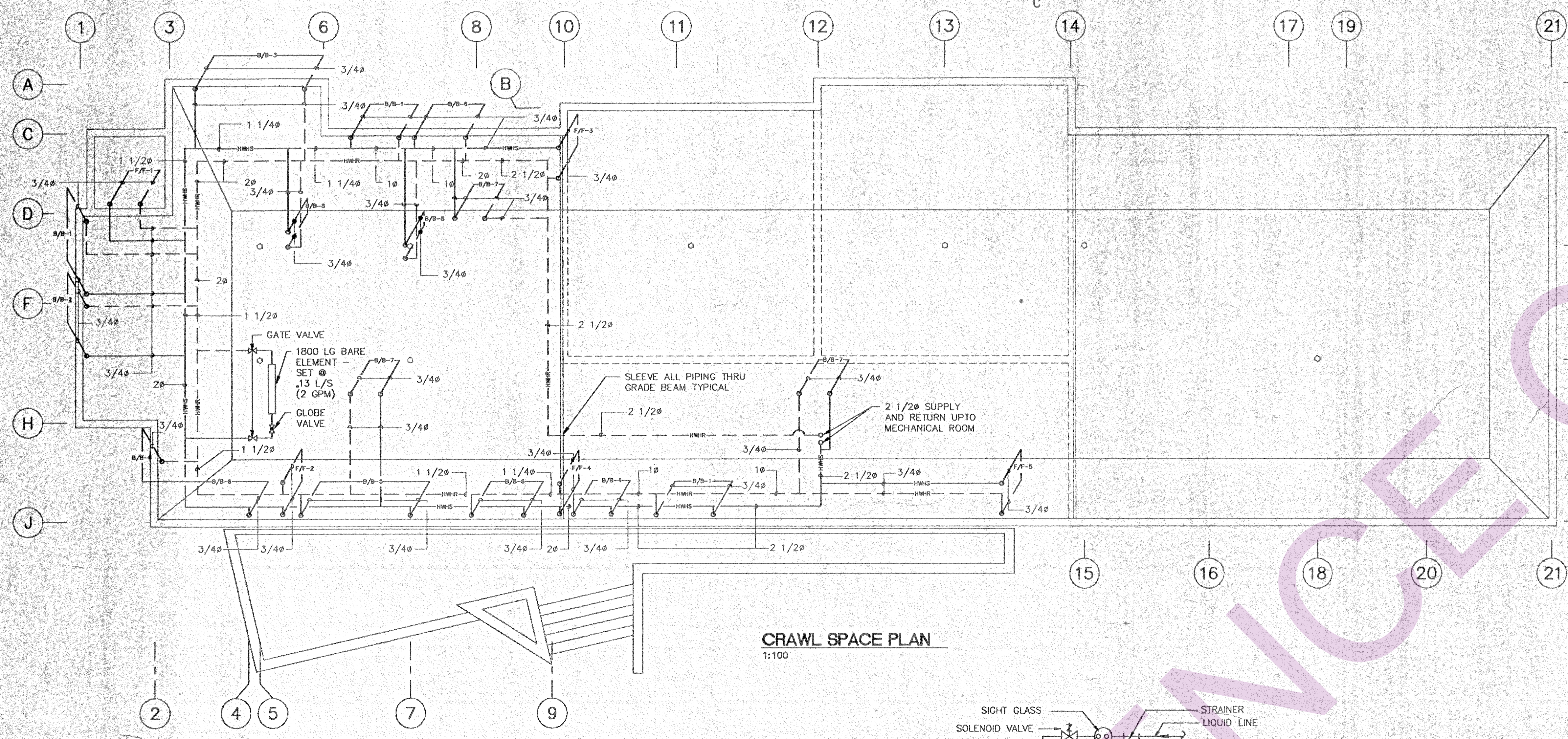
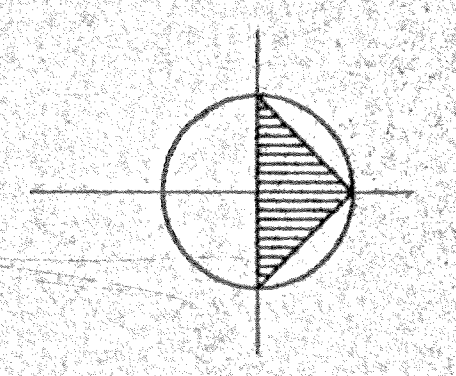
FLOOR PLAN PLUMBING LAYOUT MECHANICAL

designed	TS	checked	
date	NOVEMBER, 1992		
drawn	AP	described	
date			
revised			
date			
approved			
date			
Tender			
PWC Project Manager	Administrateur de projet		
project number	781359	No. du projet	
drawing no.	W-M2	no. du dessin	
		CADD FILE	A056W.M2

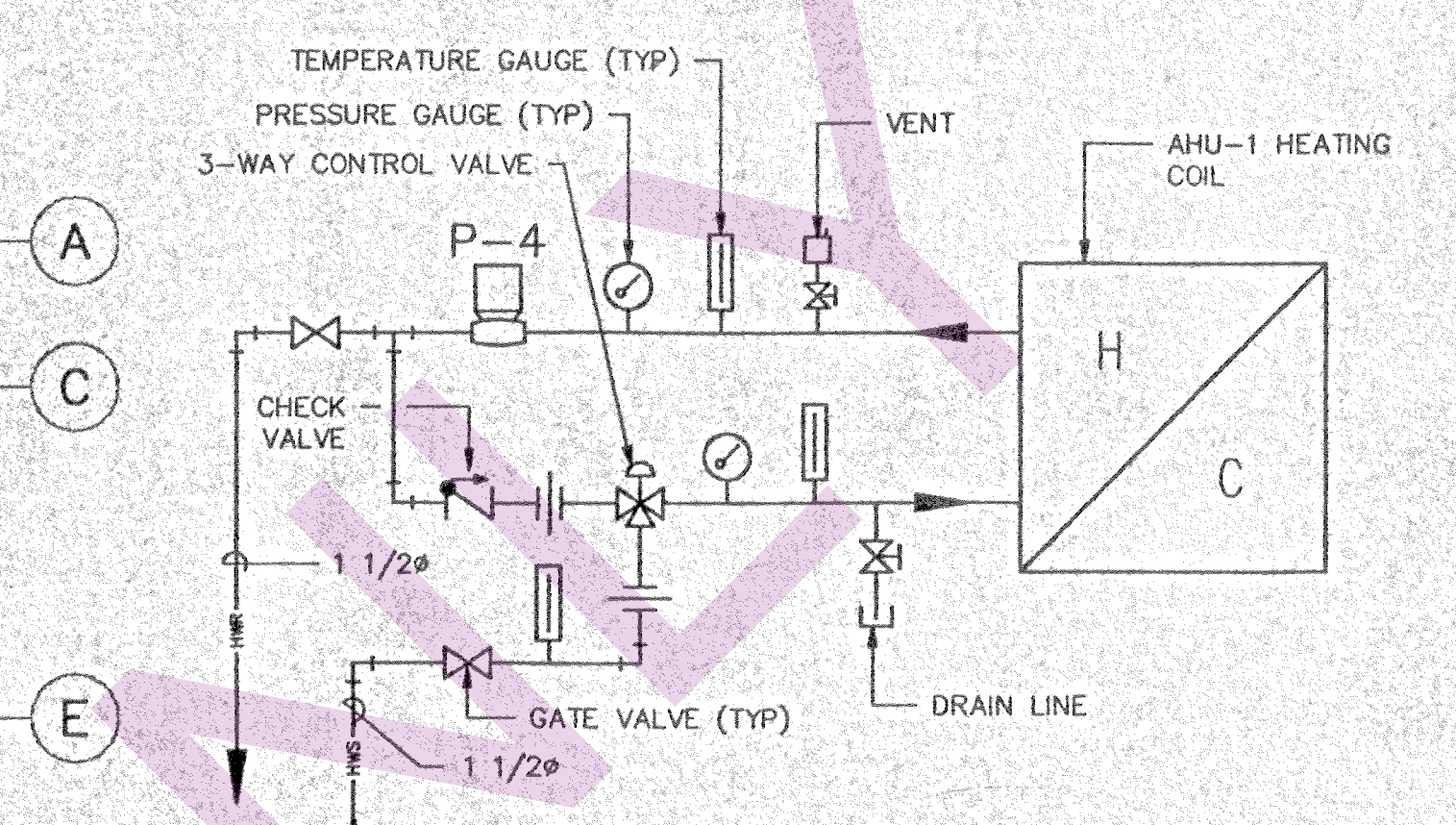


AS-BUILT DWGS.
CHECKED JUN 22 1994
RED LAKE CONSTRUCTION CO. LTD.
1771 - F. BESS AVE. S.W. VAN. B.C. V6L 0T8
PHONE: (204) 732-7729

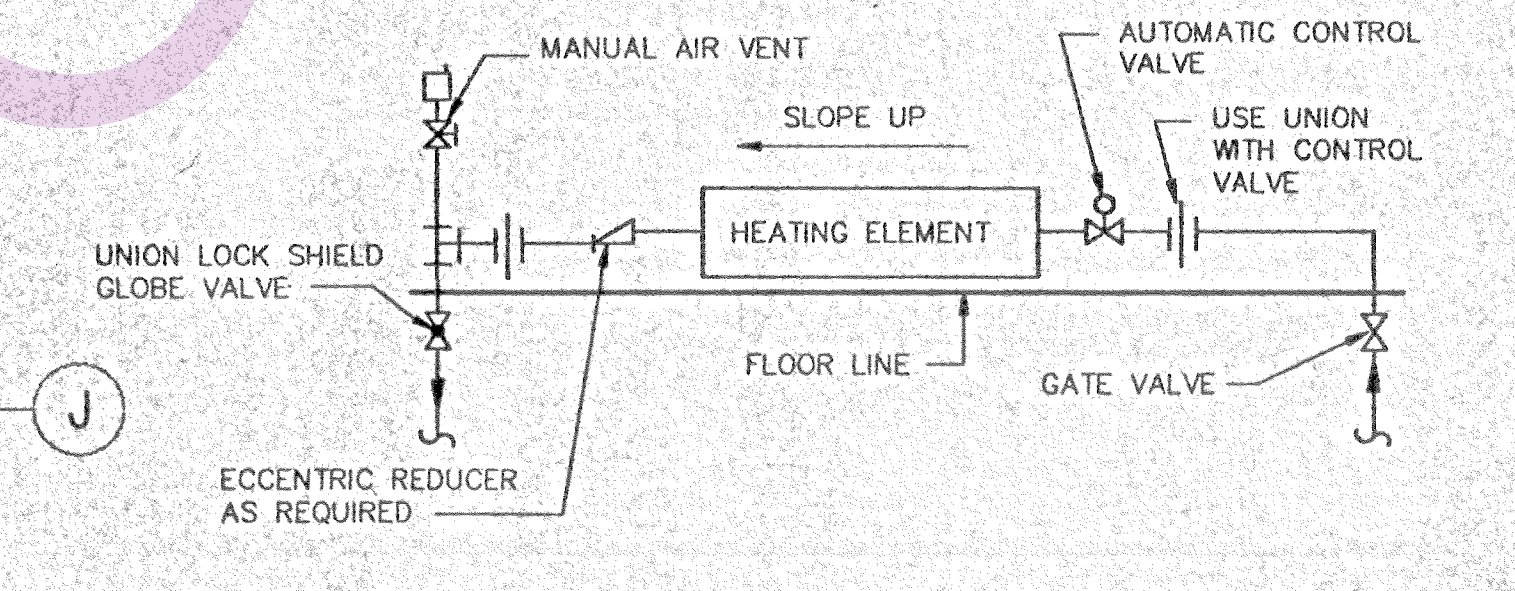
Revision		date	
A	A detail no. no. de detail	A	A
C	B location drawing no. no. de dessin	B	B
	C drawing no. dessin no.		
project		project	
SELKIRK, MANITOBA			
CANADIAN COAST GUARD BASE			
drawing		dessein	
CRAWL SPACE, SECTIONS & DETAILS MECHANICAL			
designed	TS	checked	
date	NOVEMBER, 1992	drawn	AP
drawn	AP	dessein	
reviewed		approved	
date		date	
approved		approved	
date		date	
sender		sender	
PWC Project Manager	Administrateur de projets PWC	project number	No. du projet
		781359	
drawing no.	no. du dessin	CADD FILE	
W-M3	A056W03		



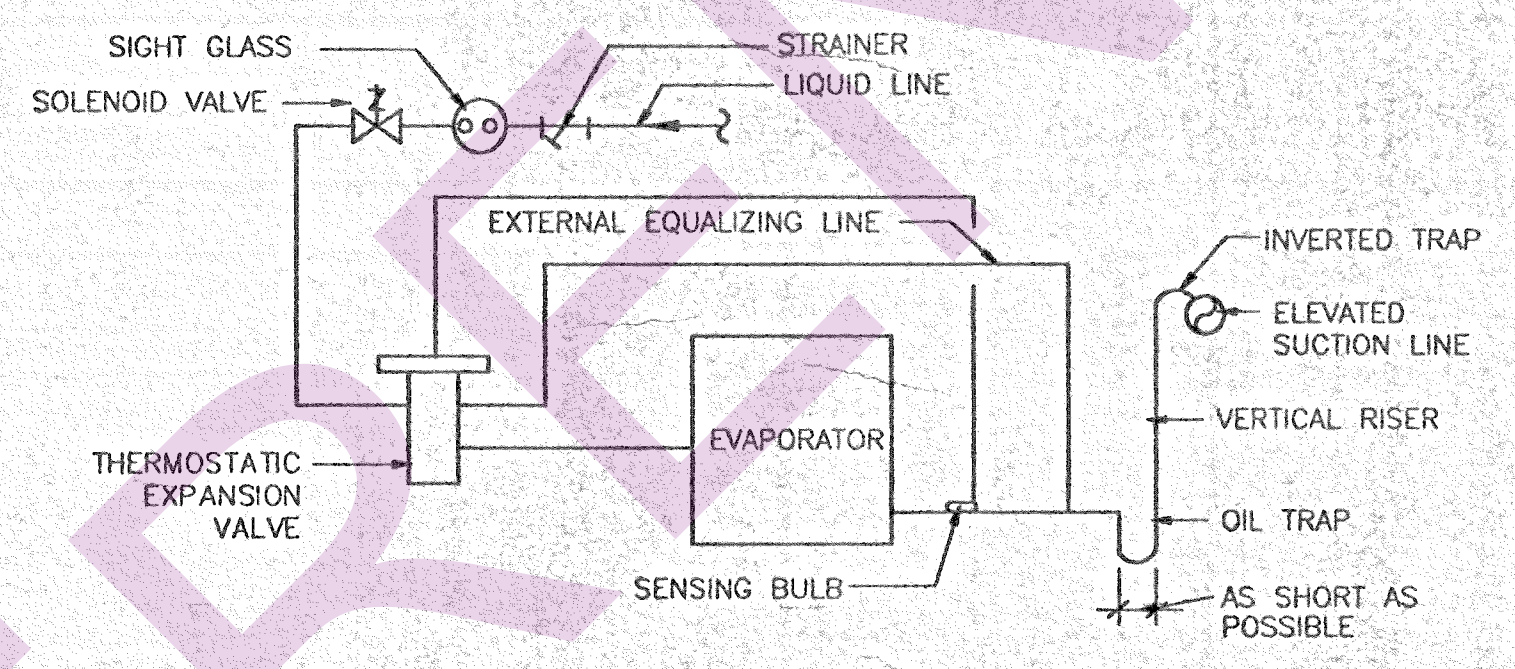
CRAWL SPACE PLAN
1:100



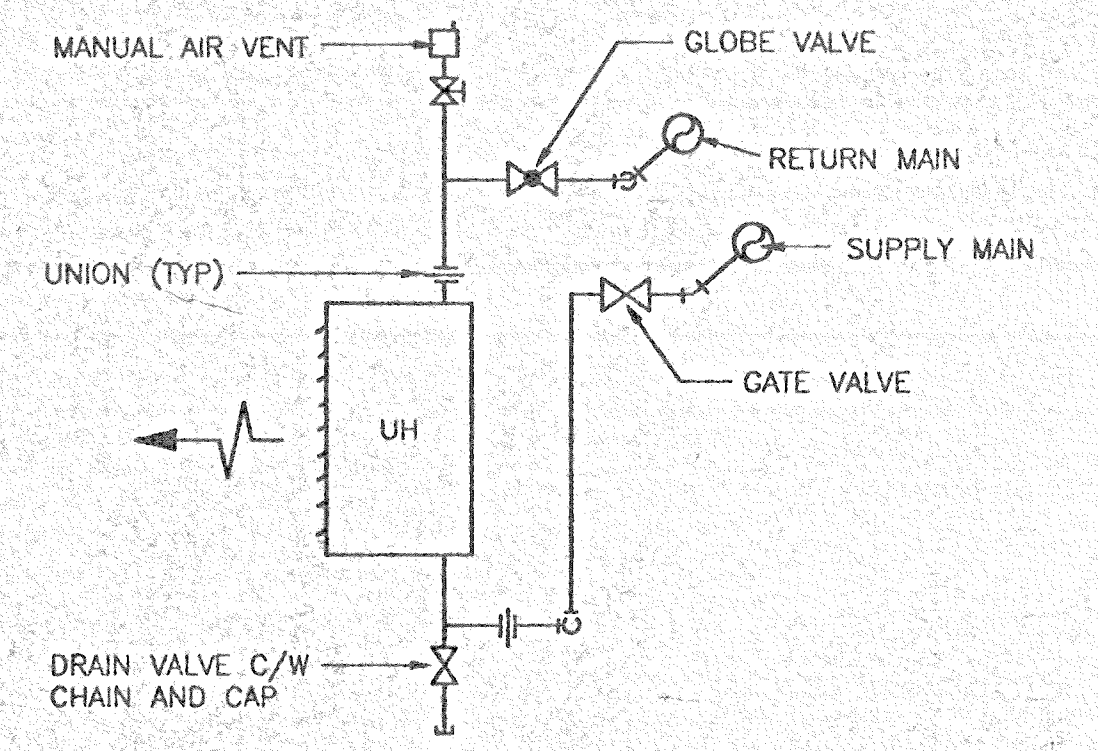
AHU-1 HEATING COIL SCHEMATIC
N.T.S.



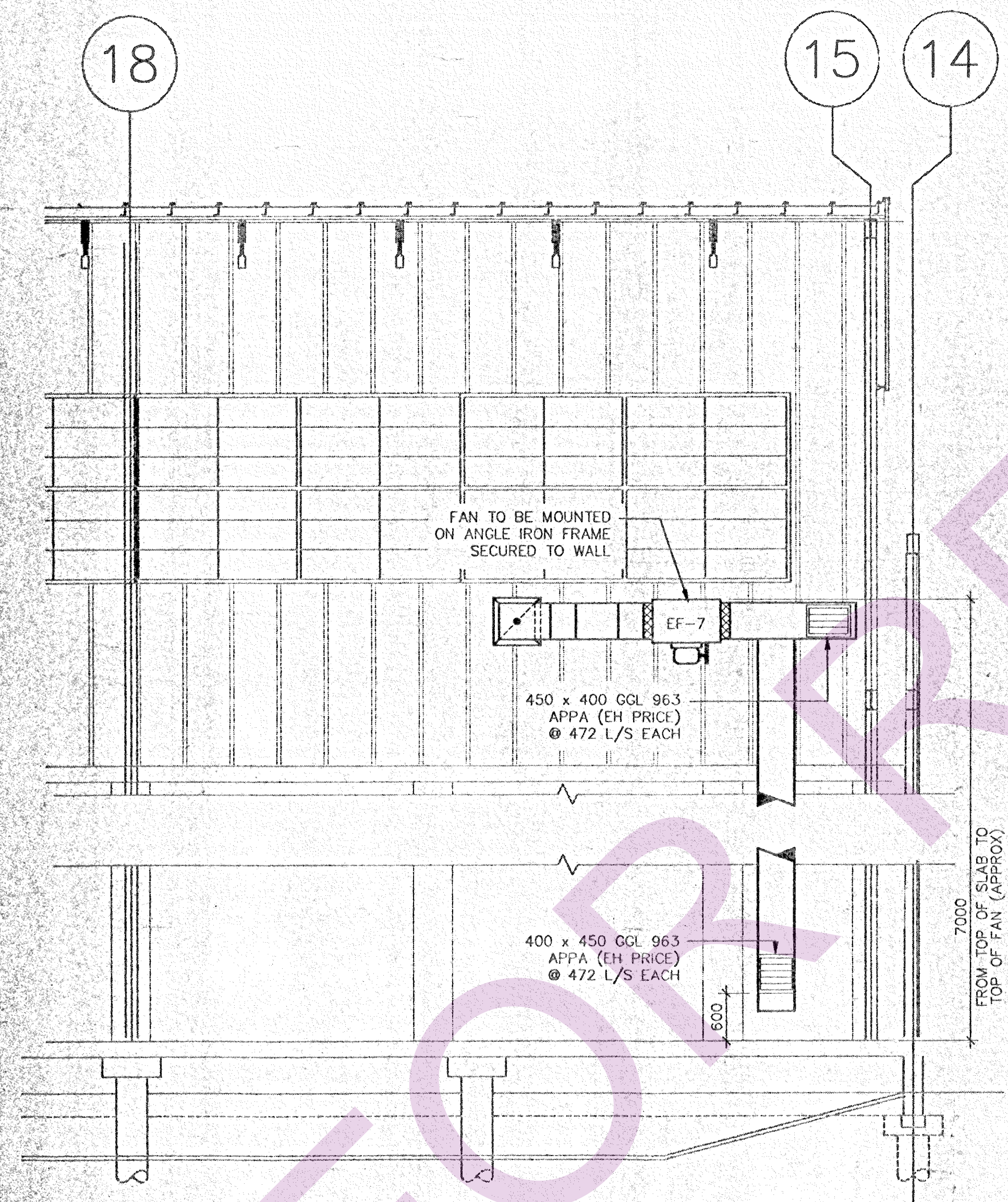
TYPICAL WALL FIN SCHEMATIC
N.T.S.



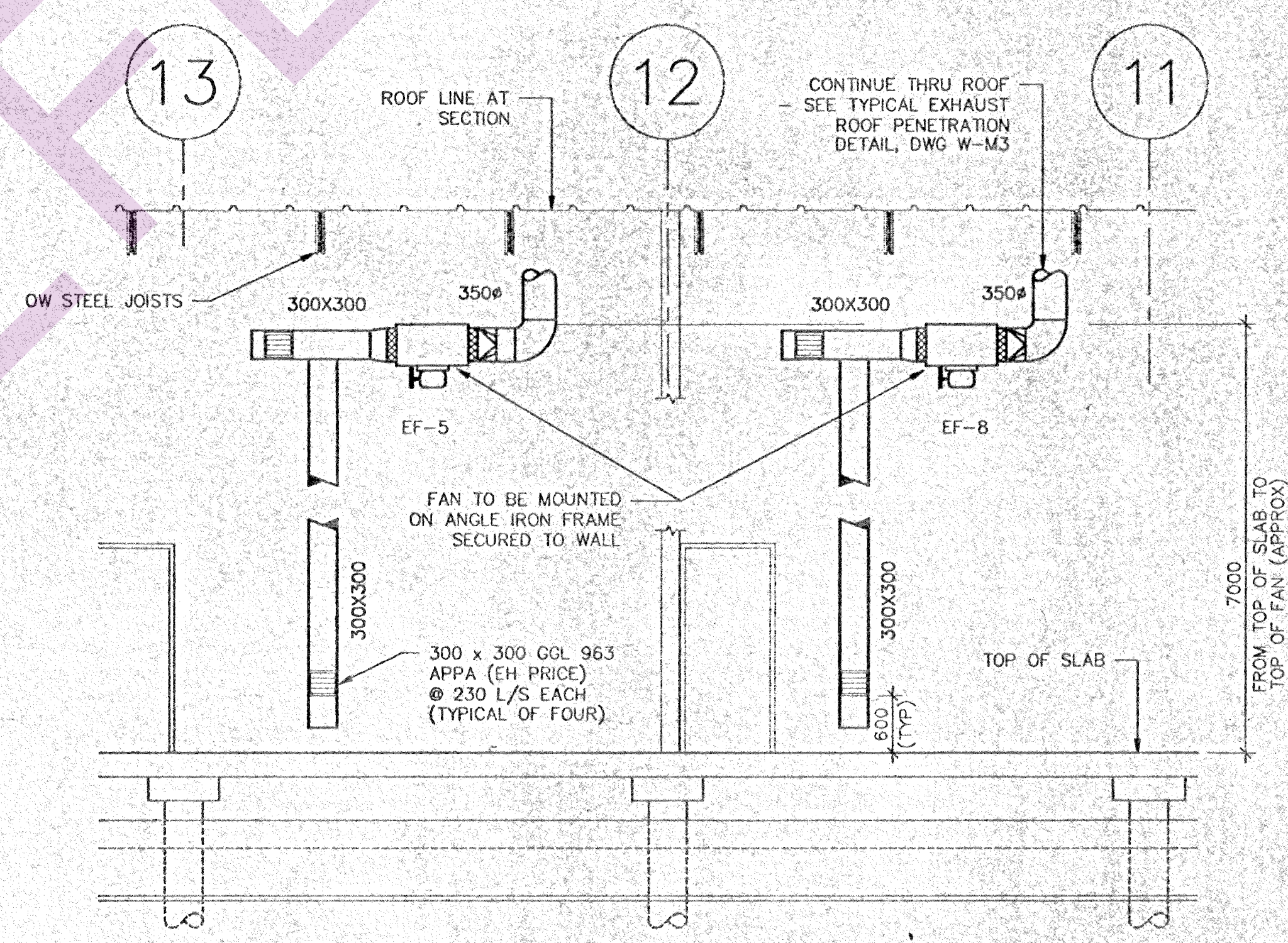
D/X COIL SCHEMATIC
N.T.S.



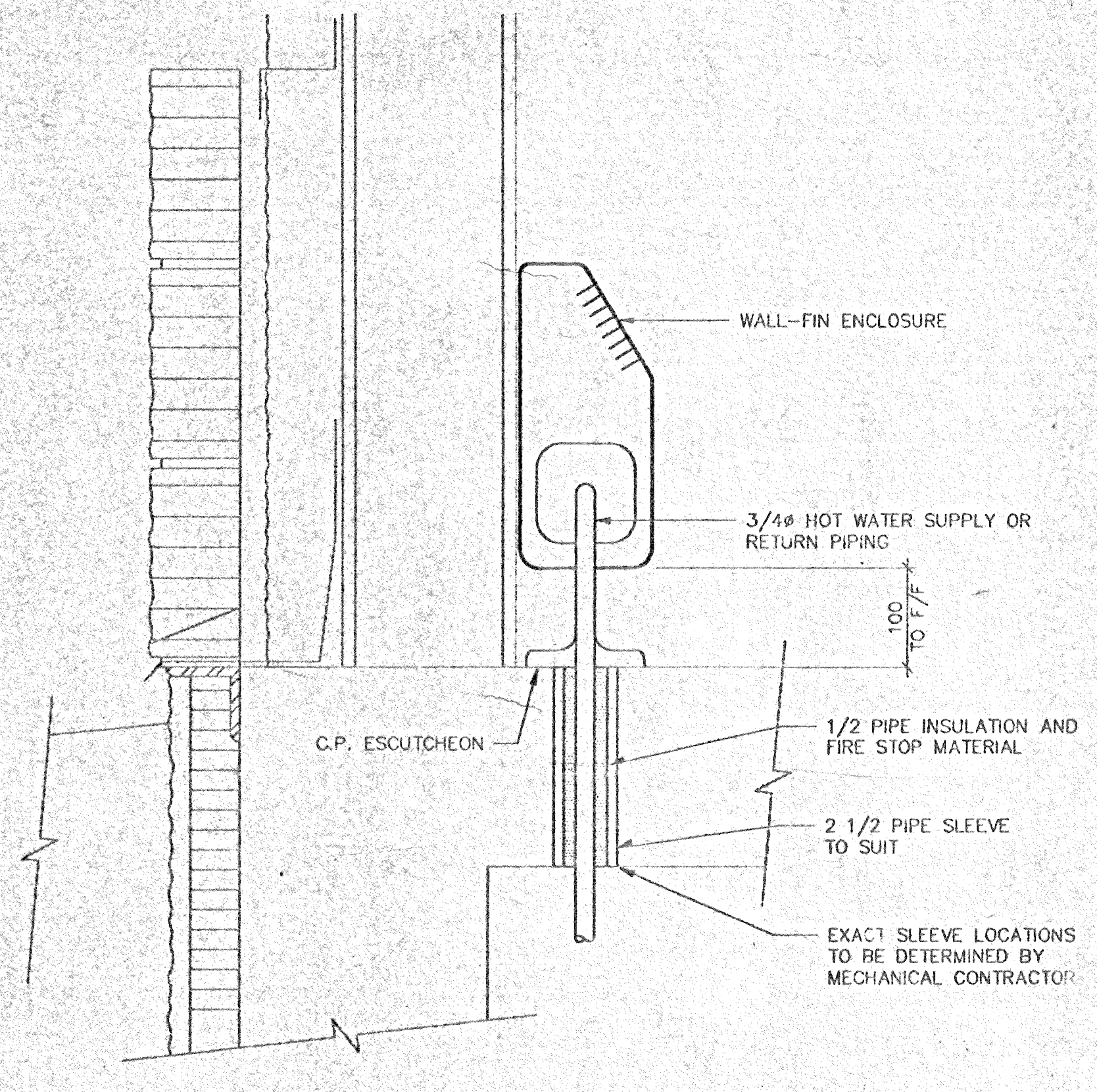
TYPICAL UNIT HEATER SCHEMATIC
N.T.S.



1 PARTIAL ELEVATION
1:50



2 PARTIAL ELEVATION
1:50



PIPE SLEEVE DETAIL
N.T.S.

NOTE:
1. ALL PIPE SIZES NPS UNLESS OTHERWISE NOTED

AS-BUILT DWGS.
CHECKED JUN 2 2 1994
RED LAKE CONSTRUCTION CO. LTD.
BUILDERS - CONTRACTORS
DEVELOPERS - PROJECT MANAGERS
1771 - F. HISS AVE. WPG. MAN. CAN. S7K 0T7
PHONE: (204) 692-7783

revision	date
A	A detail no. no. of detail
B	B location drawing no. per detail no.
C	C drawing no. detail no.

project: SELKIRK, MANITOBA
project: CANADIAN COAST GUARD BASE
drawing: CRAWL SPACE SECTIONS, DETAILS & SCHEMATICS

designed: TS
date: NOVEMBER, 1992
drawn: AP
checked: [Signature]
date: 92-11-04
approved: [Signature]
date: [Signature]
Tender: [Signature]
PWC Project Manager: Administrator Co. P.
project number: 781359
drawing no.: W-M4
no. of sheets: 1
CADD FILE: A0584.MC