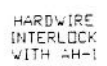
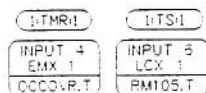


APPENDIX A

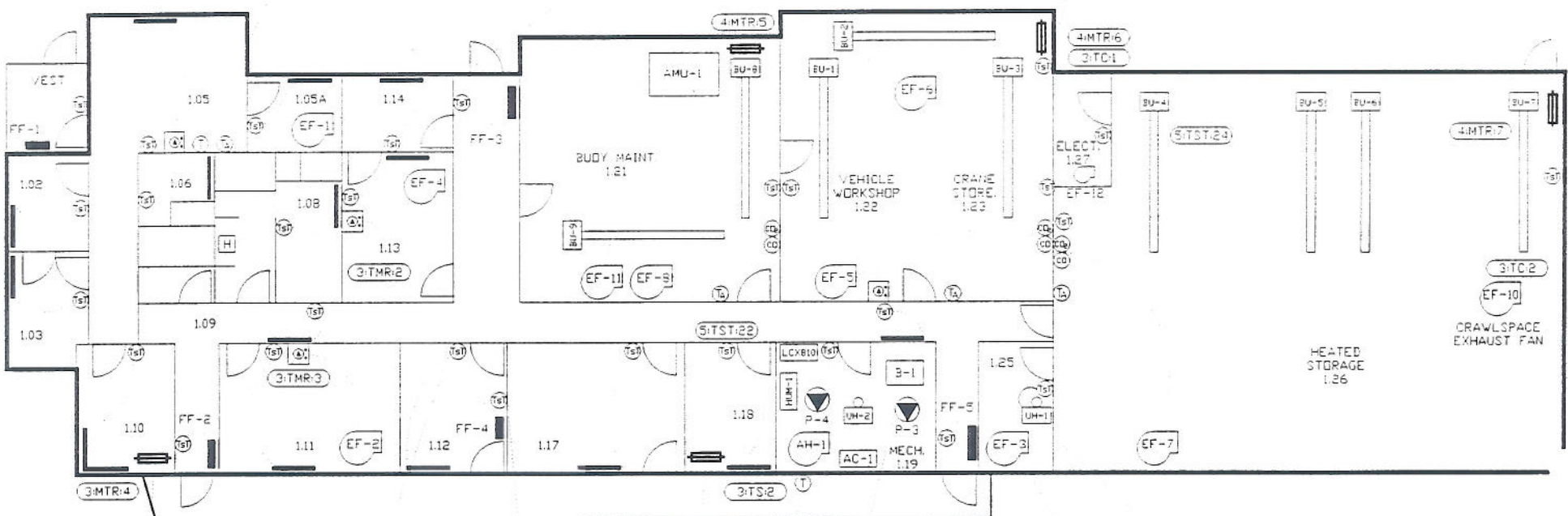
Selkirk Coast Guard Existing Control Drawings



EF-11 NOW INTERLOCKED TO OUTSIDED AIR DAMPER 4-MTR:5 AS WAS EF-8.

30 MINUTE MANUAL OVERRIDE TIMER SWITCH

EXISTING THERMOSTAT ABANDONED UNIT BU-2 NOW CONTROLLED BY SAME THERMOSTAT AS BU-3.

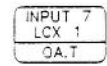


CRAWLSPACE INTAKE DAMPER

TYPICAL RADIATION THERMOSTAT (3-TST:1) TO (3-TST:15)
 (3-TST:1)

TYPICAL FORCE FLOW THERMOSTAT (5-TST:16) TO (5-TST:21)
 (5-TST:16)

RELIEF AIR DAMPER

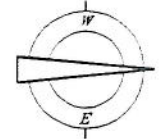


HARDWARE INTERLOCK WITH AH-1

TYPICAL FORCE FLOW WIRED BY ELECTRICAL

OPERATES CONTINUOUSLY

TYPICAL UNIT HEATER WIRED BY ELECTRICAL
 (5-TST:23)



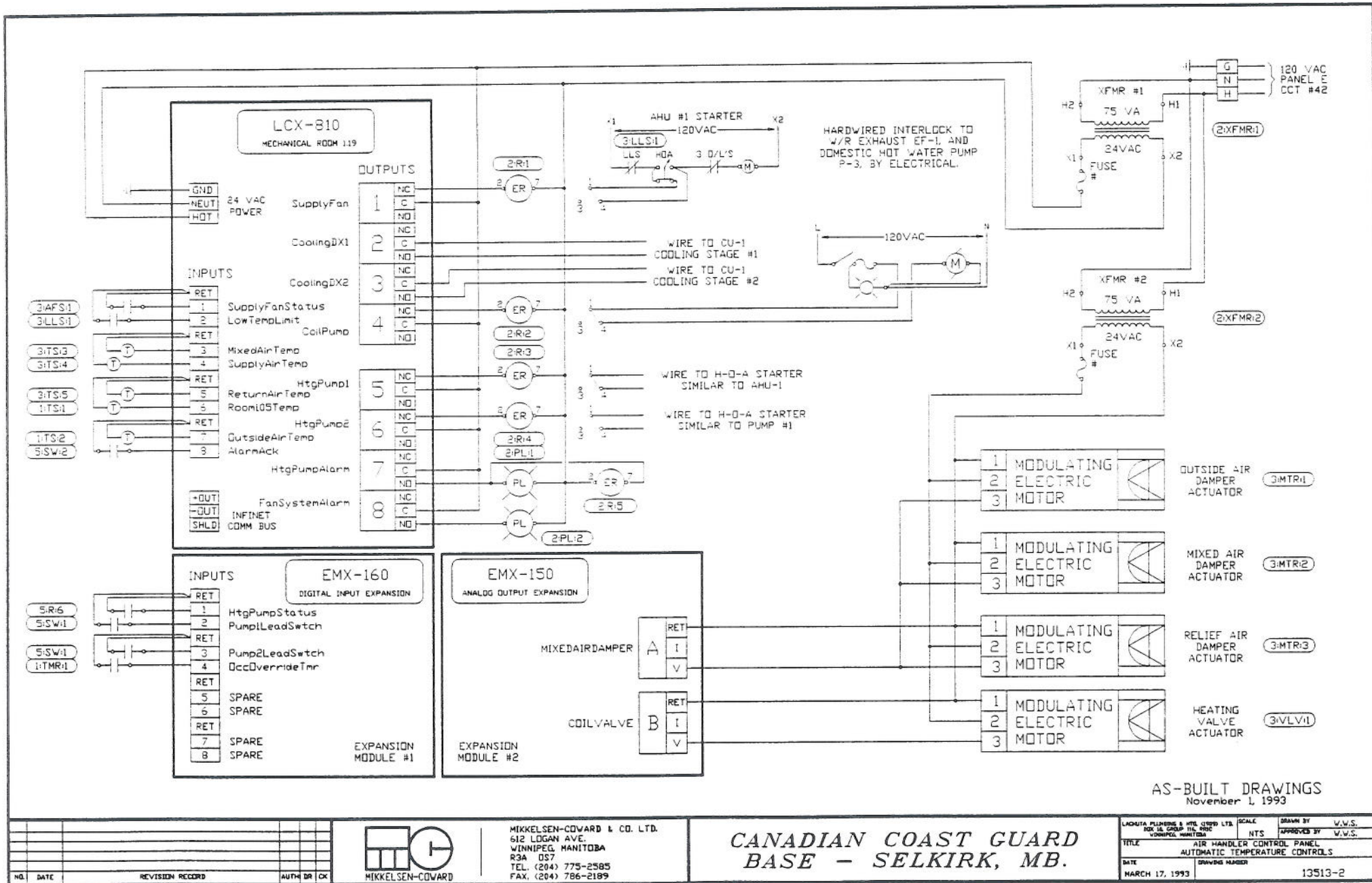
NO.	DATE	PROJECT CHANGE NOTICE #21 *	REVISION RECORD	AUTH	DR	CK
1	11/04/94					



MIKKELSEN-COWARD & CO. LTD.
 612 LOGAN AVE.
 WINNIPEG, MANITOBA
 R3A 0S7
 TEL. (204) 775-2585
 FAX. (204) 786-2189

**CANADIAN COAST GUARD
 BASE - SELKIRK, MB.**

LACHUTA PLUMBING & MFG. (1990) LTD. REF. 10, GROUP 106, PERC WINNIPEG, MANITOBA	SCALE NTS	DRAWN BY U.W.S.
TITLE AUTOMATIC TEMPERATURE CONTROLS	APPROVED BY U.W.S.	
DATE MARCH 17, 1993	DRAWING NUMBER 13513-1	



AS-BUILT DRAWINGS
November 1, 1993

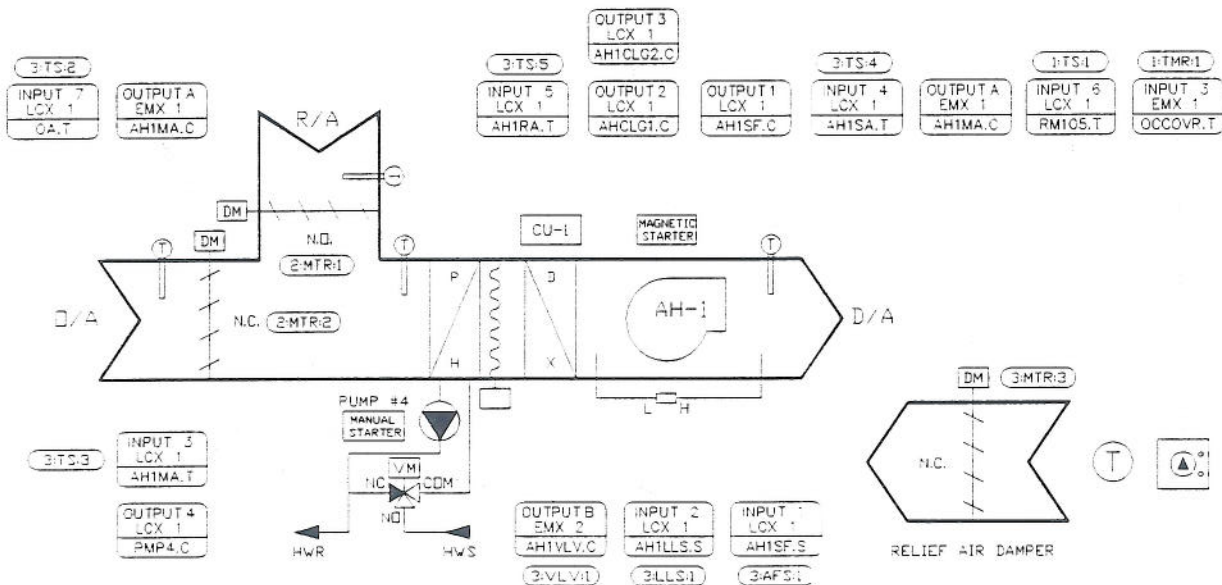
NO.	DATE	REVISION RECORD	AUTH	DR	CK



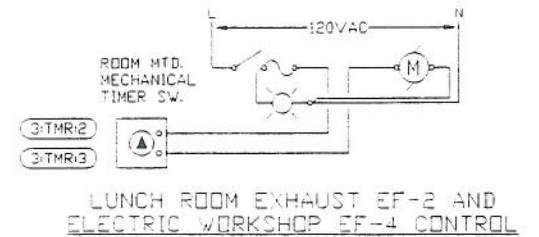
MIKKELSEN-COWARD & CO. LTD.
612 LODGAN AVE.
WINNIPEG, MANITOBA
R3A 0S7
TEL. (204) 775-2585
FAX. (204) 786-2189

CANADIAN COAST GUARD
BASE - SELKIRK, MB.

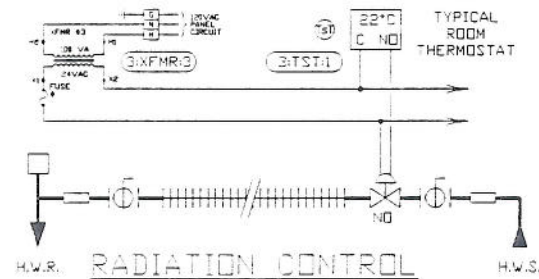
LAQUITA PUBLISHING & MFG. GROUP LTD.	SCALE	DRAWN BY	W.W.S.
REV. 14 GROUP 114, 8902	NTS		
VONKOPF, MANITOBA			
TITLE	AIR HANDLER CONTROL PANEL		
	AUTOMATIC TEMPERATURE CONTROLS		
DATE	DRAWING NUMBER		
MARCH 17, 1993			13513-2



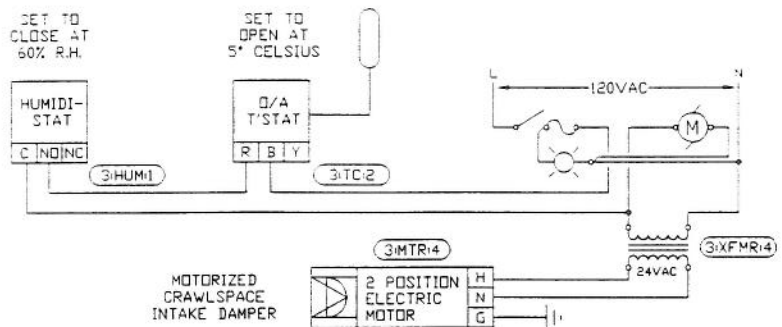
AH-1 OFFICE AIR HANDLING UNIT



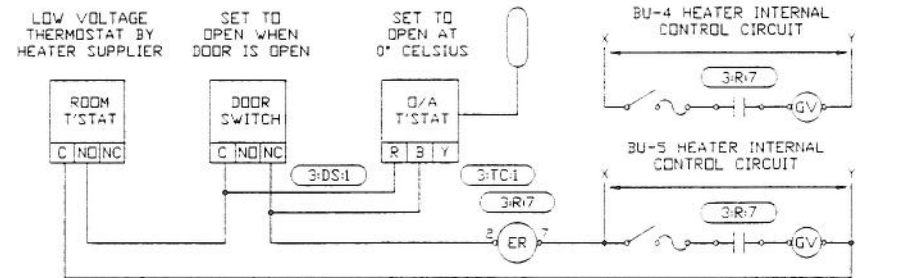
LUNCH ROOM EXHAUST EF-2 AND ELECTRIC WORKSHOP EF-4 CONTROL



RADIATION CONTROL



EF-10 CRAWLSPACE EXHAUST FAN



BU-4 AND BU-5 GAS FIRED INFRARED HEATERS

NOTE:
TYPICAL FOR HEATER GROUPS (BU-1, BU-2 AND BU-3) WITH 2 DOORS, (BU-4 AND BU-5), (BU-6 AND BU-7) AND (BU-8 AND BU-9), WITH 1 DOOR PER HEATER PAIR. MULTIPLE OUTDOOR THERMOSTATS WIRED IN PARALLEL TO DOOR LIMIT SWITCHES.

AS-BUILT DRAWINGS
November 1, 1993

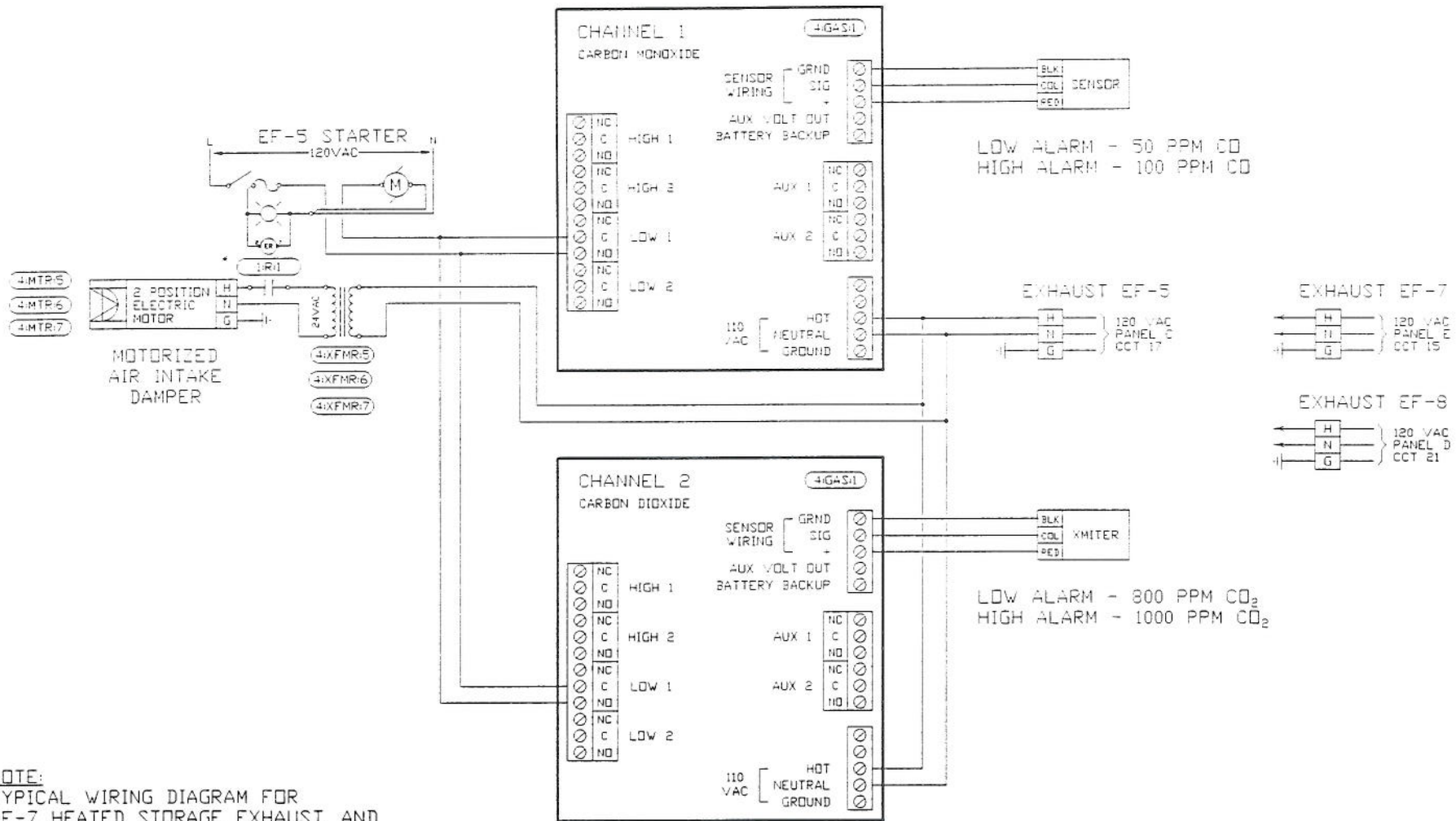
NO.	DATE	REVISION RECORD	AUTH	DR	CK



MIKKELSEN-COWARD & CO. LTD.
612 LOGAN AVE.
WINNIPEG, MANITOBA
R3A 0S7
TEL. (204) 775-2585
FAX. (204) 786-2189

CANADIAN COAST GUARD
BASE - SELKIRK, MB.

TITLE	SCALE	DATE	DRAWING NUMBER
AUTOMATIC TEMPERATURE CONTROLS <td> </td> <td>MARCH 17, 1993 <td>13513-3</td> </td>		MARCH 17, 1993 <td>13513-3</td>	13513-3



NOTE:
TYPICAL WIRING DIAGRAM FOR
EF-7 HEATED STORAGE EXHAUST, AND
EF-8 BUDY MAINTENACE EXHAUST FANS.
(EF-7 AND EF-8 WITH H-O-A STARTERS)

VEHICLE MAINTENANCE WORKSHOP EXHAUST FAN EF-5 CONTROL

AS-BUILT DRAWINGS
November 1, 1993

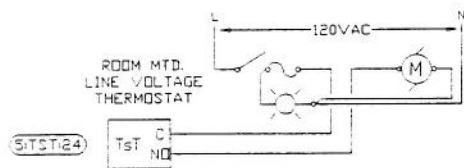
NO.	DATE	PROJECT CHANGE NOTICE #21 - ADDED RELAY 149	REVISION RECORD	AUTH	DR	CK
1	11/04/94					



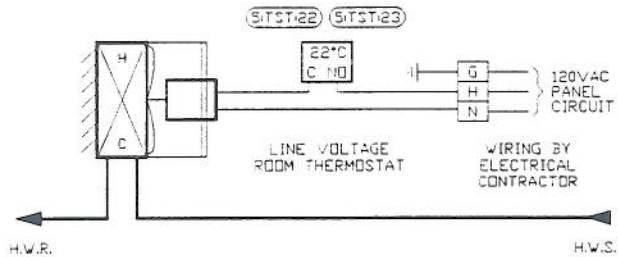
MIKKESEN-COWARD & CO. LTD.
612 LOGAN AVE.
WINNIPEG, MANITOBA
R3A 0S7
TEL. (204) 775-2585
FAX. (204) 796-2189

CANADIAN COAST GUARD
BASE - SELKIRK, MB.

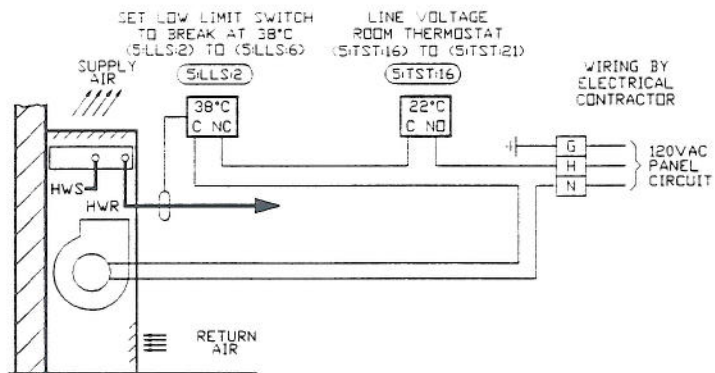
LAYOUT PLUMBING & WEL. (1999) LTD.	SCALE	DRAWN BY	V.W.S.
BOX 10, GROUP 116, RRIC WINNIPEG, MANITOBA	NTS	NTS	APPROVED BY V.W.S.
TITLE: EF-5, EF-7, AND EF-8 SCHEMATICS			
DATE: MARCH 17, 1993			
DRAWING NUMBER: 13513-4			



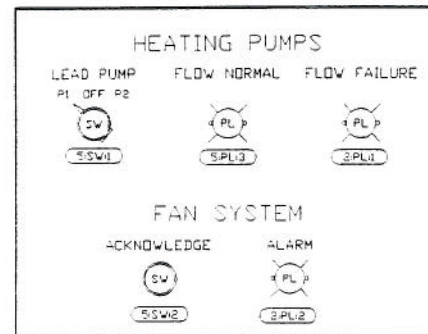
EF-12 ELECTRICAL ROOM EXHAUST



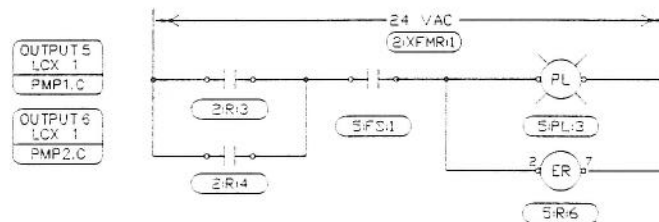
TYPICAL UNIT HEATER (UH-1 AND UH-2) CONTROL



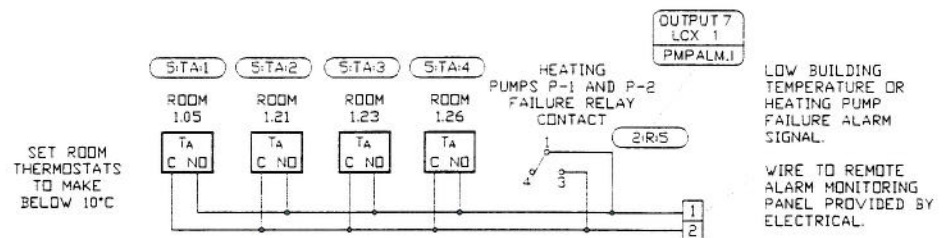
TYPICAL FORCE FLOW FF-1 TO FF-5 CONTROL



FAN ROOM ALARM STATUS PANEL



PUMP FLOW STATUS CIRCUIT



REMOTE ALARM MONITORING TEMPERATURE ALARM SIGNAL

AS-BUILT DRAWINGS
November 1, 1993

NO.	DATE	REVISION RECORD	AUTH	BR	CK



MIKKELSEN-COVARD & CO. LTD.
612 LOGAN AVE.
WINNIPEG, MANITOBA
R3A 0S7
TEL. (204) 775-2585
FAX. (204) 786-2189

CANADIAN COAST GUARD
BASE - SELKIRK, MB.

SCALE	DATE	BY	CHKD	APP'D
1:1	MARCH 17, 1993	W.W.S.	W.W.S.	W.W.S.

TITLE: SYSTEM SCHEMATICS
AUTOMATIC TEMPERATURE CONTROLS

OFFICE FAN SYSTEM (AH-1) CONTROL

TAG	QTY	DESCRIPTION
3:MTR:1 3:MTR:2 3:MTR:3	3	DAMPER ACTUATOR, BELIMO MODEL FM24-SR, 24 VAC, MODULATING, SPRING RETURN
1:VLV:1	1	3 WAY MIXING VALVE, 3/4", CV = 12, DELTA 75-3-12, 0-10V MOD
1:TMR:1	1	MANUAL TIMER SWITCH, 6 HOUR, 3PST, PARAGON SW6H
3:AFS:1	1	DIFFERENTIAL PRESSURE AIRFLOW SWITCH, MODEL RH-3
3:LLS:1	1	LOW LIMIT SWITCH, DPDT, MANUAL RESET, KREUTER MODEL QTE-3017
1:TS:1	1	SPACE TEMPERATURE SENSOR, ANDOVER MODEL 01-0008-719
3:TS:2 3:TS:3 3:TS:4 3:TS:5	4	DUCT TEMPERATURE SENSORS, PROBE, ANDOVER MODEL 01-0100-279
3:R:1 3:R:2 3:R:3 3:R:4 3:R:5	5	GENERAL PURPOSE RELAY, MODEL MK2P-1, 24 VAC, DPDT, PF083A BASES
2:PL:2	1	PILOT LIGHT, 24 VAC, L4025 RED LENS, L4017 THREADED SOCKET
5:SW:2	1	PUSH BUTTON SWITCH, ALLEN-BRADLEY 800E-F3 GREEN, WITH 800E-KL10 N.O. LATCH WITH CONTACT BLOCK
2:XFMR:1 2:XFMR:2	2	120/24 VAC CONTROL TRANSFORMER, MODEL FTC-7524, 75 VA, CLASS B
	1	ANDOVER CONTROLLER, MODEL LCX-910 WITH LOCAL DISPLAY
	1	ANDOVER EXPANSION MODULE, MODEL EMX-160, 8 DIGITAL INPUTS
	1	ANDOVER EXPANSION MODULE, MODEL EMX-150, 2 ANALOG OUTPUTS
	1	CONTROL PANEL, MODEL RET2620, HINGED, PERF PANEL, KEYED LOCK

AIR HANDLING UNIT AH-1 (AH1SF.C) OPERATES CONTINUOUSLY IN THE OCCUPIED MODE AS DETERMINED BY THE CONTROLLER'S SEVEN DAY TIME AND HOLIDAY SCHEDULES. WASHROOM EXHAUST FAN EF-1 AND DOMESTIC HOT WATER PUMP P-3 ARE INTERLOCKED WITH THE AIR HANDLING UNIT. A MANUAL OCCUPANCY OVERRIDE TIMER (OCCOVR.T) LOCATED IN ROOM #105, WILL START THE AIR HANDLING SYSTEM DURING UNSCHEDULED OCCUPANCY.

DURING THE UNOCCUPIED MODE, THE FAN WILL CYCLE ON, WITH THE MIXING DAMPERS (AH1MA.C) IN THE FULL RETURN POSITION, AND THE PREHEAT COIL VALVE (AH1VLV.C) IN THE FULL HEATING POSITION IN ORDER TO MAINTAIN THE NIGHT SETBACK SETPOINT.

WHEN THE AIR HANDLING UNIT FAN IS OFF, AS SENSED BY AN AIR FLOW PROVING SWITCH (AH1SF.S), THE MIXED AIR DAMPERS RETURN TO THE FULL RETURN POSITION, AND PREHEAT COIL VALVE TO FULL HEAT POSITION. THE MECHANICAL COOLING REMAINS OFF.

WHEN THE OUTSIDE AIR TEMPERATURE (OA.T) FALLS BELOW 15°C, THE COIL CIRCULATION PUMP P-4 (PMP4.C) OPERATES CONTINUOUSLY. THE CONTROLLER MODULATES THE PREHEAT COIL 3 WAY VALVE (AH1VLV.C), IN SEQUENCE WITH THE MIXED AIR DAMPERS TO MAINTAIN THE DISCHARGE AIR TEMPERATURE AT SETPOINT (SAT1.SP).

WHEN THE OUTSIDE AIR TEMPERATURE RISES ABOVE 15°C, THE COIL PUMP P-4 IS STOPPED, AND THE PREHEAT COIL VALVE IS CLOSED FULLY. THE MIXED AIR DAMPERS ARE OPENED TO THEIR MINIMUM OUTSIDE AIR POSITION (MIN.OA), AND BOTH STAGES OF THE MECHANICAL COOLING (AHCLG1.C AND AHCLG2.C) ARE CYCLED TO MAINTAIN THE RETURN AIR TEMPERATURE (AH1RA.T) AT THE COOLING SETPOINT (COOL.SP).

SHOULD A LOW HEATING COIL DISCHARGE TEMPERATURE BE DETECTED, BY A LOW AIR TEMPERATURE LIMIT SWITCH INSTALLED AFTER THE PREHEAT COIL, THE AIR HANDLER UNIT FAN SHALL STOP AND GENERATE AN ALARM INDICATION AT THE LOCAL CONTROL PANEL.

A SUPPLY FAN FAILURE AS SENSED BY AN AIR FLOW PROVING SWITCH, WILL ALSO CAUSE AN ALARM INDICATION AT THE LOCAL CONTROL PANEL.

THE LOCAL CONTROL PANEL PROVIDES INDICATION OF THE OUTSIDE AIR TEMPERATURE, THE MIXED AIR TEMP, THE DISCHARGE AIR TEMP, THE RETURN AIR TEMP, AS WELL AS ROOM #105 TEMPERATURE. ALSO AVAILABLE ARE THE FAN CONTROL AND STATUS SIGNALS, LOW LIMIT SWITCH STATUS, PUMPS P-1, P-2, AND P-4 COMMAND STATUS, CONDENSING UNIT COMMAND STATUS, AND THE POSITION OUTPUT TO THE PREHEAT COIL VALVE AND THE MIXED AIR DAMPERS.

THE LOCAL CONTROL PANEL ALSO PROVIDES OPERATOR SETPOINT ADJUSTMENTS FOR THE SUPPLY AIR TEMPERATURE, HEATING/COOLING SWITCH OVER TEMPERATURE, AND THE RETURN AIR TEMPERATURE SETPOINT FOR THE MECHANICAL COOLING.

THE PACKAGED ELECTRONIC STEAM HUMIDIFIER CONTROLS INCLUDE A RETURN AIR HUMIDISTAT, A SUPPLY AIR HIGH LIMIT HUMIDISTAT, AND AIR FLOW PROVING SWITCH.

LUNCH/CONFERENCE ROOM EXHAUST FAN EF-2

TAG	QTY	DESCRIPTION
3:TMR:3	1	MECHANICAL TIMER SWITCH, 0-6 HOUR, 3PST, PARAGON SW6H

A MECHANICAL TIMER SWITCH CONTROLS THE OPERATION OF THE EXHAUST FAN

BATTERY STORAGE ROOM EXHAUST FAN EF-3

THIS EXHAUST FAN RUNS CONTINUOUSLY.

ELECTRIC WORKSHOP EXHAUST FAN EF-4

TAG	QTY	DESCRIPTION
3:TMR:2	1	MECHANICAL TIMER SWITCH, 0-6 HOUR, 3PST, PARAGON SW6H

A MECHANICAL TIMER SWITCH CONTROLS THE OPERATION OF THE EXHAUST FAN

VEHICLE MAINTENANCE WORKSHOP EXHAUST FAN EF-5

TAG	QTY	DESCRIPTION
4:GAS:1	1	CARBON MONOXIDE AND CARBON DIOXIDE CONTROL SYSTEM GEL MODEL GAS-1002-CO/CO2 CONTROLLER WITH QTS-1800 CO SENSOR, AND QTS-2000 CO2 TRANSMITTER
4:MTR:6	1	DAMPER ACTUATOR, MODEL NM24, 24VAC, ON/OFF
4:XFMR:6	1	120/24 VAC CONTROL TRANSFORMER, MODEL FTC-2024, 20 VA, CLASS 2

WHEN THE LOW LEVEL ALARM LIMIT IS DETECTED, (50 PPM CO, AND 800 PPM CO2) THE EXHAUST FAN AND IT'S ASSOCIATED OUTSIDE AIR INTAKE DAMPER SHALL OPEN.

WHEN THE HIGH LEVEL ALARM LIMIT IS REACHED, (100 PPM CO, AND 1000 PPM CO2) THE AUDIBLE LOCAL ALARM SHALL SOUND UNTIL MANUALLY SILENCED.

AS-BUILT DRAWINGS
November 1, 1993

NO.	DATE	REVISION RECORD	AUTH	DR	CK



MIKELSEN-COWARD & CO. LTD.
612 LOGAN AVE.
WINNIPEG, MANITOBA
R3A 0S7
TEL. (204) 775-2585
FAX. (204) 786-2189

CANADIAN COAST GUARD
BASE - SELKIRK, MB.

PROJECT	SCALE	DRAWN BY	V.V.S.
LADKITA PLUMBING & HTG. (1993) LTD. BOX 18, GROUP 118, RR1C2 WINNIPEG, MANITOBA			
TITLE	DATE	DRAWING NUMBER	
MATERIAL LIST AND SEQUENCE OF OPERATION AUTOMATIC TEMPERATURE CONTROLS	MARCH 17, 1993		
			13513-6

VEHICLE MAINTENANCE TAILPIPE EXHAUST FAN EF-6

THIS EXHAUST FAN IS MANUALLY TURNED ON AS NEEDED.

HEATED STORAGE EXHAUST FAN EF-7

TAG	QTY	DESCRIPTION
4:GAS:2	1	CARBON MONOXIDE AND CARBON DIOXIDE CONTROL SYSTEM GEL MODEL QAS-1002-CO/CO2 CONTROLLER WITH QTS-1800 CO SENSOR, AND QTS-2000 CO2 TRANSMITTER
4:MTR:7	1	DAMPER ACTUATOR, MODEL NM24, 24 VAC, ON-OFF
4:XFMR:7	1	120/24 VAC CONTROL TRANSFORMER, MODEL FTC-2024, 20 VA, CLASS 2

WHEN THE LOW LEVEL ALARM LIMIT IS DETECTED, (50 PPM CO, AND 800 PPM CO2) THE EXHAUST FAN AND IT'S ASSOCIATED OUTSIDE AIR INTAKE DAMPER SHALL OPEN.

WHEN THE HIGH LEVEL ALARM LIMIT IS REACHED, (100 PPM CO, AND 1000 PPM CO2) THE AUDIBLE LOCAL ALARM SHALL SOUND UNTIL MANUALLY SILENCED.

BODY MAINTENANCE VENTILLATION EXHAUST FAN EF-8

TAG	QTY	DESCRIPTION
4:GAS:3	1	CARBON MONOXIDE AND CARBON DIOXIDE CONTROL SYSTEM GEL MODEL QAS-1002-CO/CO2 CONTROLLER WITH QTS-1800 CO SENSOR, AND QTS-2000 CO2 TRANSMITTER
4:MTR:5	1	DAMPER ACTUATOR, MODEL NM24, 24 VAC, ON-OFF
4:XFMR:5	1	120/24 VAC CONTROL TRANSFORMER, MODEL FTC-2024, 20 VA, CLASS 2

WHEN THE LOW LEVEL ALARM LIMIT IS DETECTED, (50 PPM CO, AND 800 PPM CO2) THE EXHAUST FAN AND IT'S ASSOCIATED OUTSIDE AIR INTAKE DAMPER SHALL OPEN.

WHEN THE HIGH LEVEL ALARM LIMIT IS REACHED, (100 PPM CO, AND 1000 PPM CO2) THE AUDIBLE LOCAL ALARM SHALL SOUND UNTIL MANUALLY SILENCED.

CRAWLSPACE VENT/EXHAUST FAN EF-10

TAG	QTY	DESCRIPTION
3:HUM:1	1	HUMIDISTAT, 120 VAC, SPST, BROAD
3:TC:2	1	OUTDOOR AIR THERMOSTAT, 120 VAC, SPST, PENN A19ABC-24
3:MTR:4	1	DAMPER ACTUATOR, MODEL NM24, 24 VAC, ON-OFF
3:XFMR:4	1	120/24 VAC CONTROL TRANSFORMER, MODEL FTC-2024, 20 VA, CLASS 2

AN AMBIENT OUTDOOR AIR TEMPERATURE THERMOSTAT WILL ENABLE THE CRAWLSPACE EXHAUST FAN EF-10 TO OPERATE WHEN THE OUTDOOR TEMPERATURE IS ABOVE 5°C. THE CRAWLSPACE MOUNTED HUMIDISTAT WILL THEN CYCLE THE EXHAUST FAN ON AND OPEN THE OUTSIDE AIR INTAKE MOTORIZED DAMPER, WHEN THE CRAWLSPACE HUMIDITY LEVEL EXCEEDS 60% RELATIVE HUMIDITY.

PAINT SHOP AIR MAKE-UP UNIT AMU-1

THE AIR MAKE-UP UNIT AMU-1 IS SUPPLIED AS A PACKAGED UNIT INCLUDING ALL THE REQUIRED CONTROLS, AND IS INTERLOCKED WITH THE EXHAUST FAN.

HOT WATER HEATING BOILER B-1

THE BOILER IS SUPPLIED WITH AN AQUASTAT TO CYCLE THE BURNERS AS REQUIRED TO MAINTAIN THE DESIRED SUPPLY WATER TEMPERATURE.

HOT WATER CIRCULATING PUMPS P-1 AND P-2

TAG	QTY	DESCRIPTION
5:FS:1	1	WATER FLOW SWITCH, SPST, MODEL F61KB-1
5:R:6	1	GENERAL PURPOSE RELAY, MODEL MK2P-1, 24 VAC, DPDT, PF683A BASES
2:PL:1	1	PILOT LIGHT, 24 VAC, L4025 RED LENS, L4017 THREADED SOCKET
5:PL:3	1	PILOT LIGHT, 24 VAC, L4029 GREEN LENS, L4017 THREADED SOCKET
5:SW:1	1	3 POSITION SELECTOR SWITCH, ALLEN-BRADLEY 800E-3M35, WITH 800-XL10 N.O. CONTACT BLOCKS, AND 800E-AXL1 LATCH

THE LOCAL AIR HANDLER CONTROLLER WILL TURN ON THE LEAD CIRCULATING PUMP PROVIDED THAT THE OUTSIDE AIR TEMPERATURE IS BELOW 18°C. THE LEAD/LAG PUMP ORDER IS DETERMINED BY THE SELECTOR SWITCH ON THE LOCAL CONTROL PANEL.

A NORMAL WATER FLOW CONDITION IS DETERMINED BY THE COMMANDED PUMP START RELAYS AND A WATER FLOW SWITCH IS COMMUNICATED TO THE LOCAL CONTROL PANEL AND ALSO INDICATED BY A GREEN PILOT LIGHT.

WHEN THE OPERATING PUMP FAILS FOR MORE THAN 30 SECONDS, THE LOCAL CONTROL PANEL WILL START THE LAG STANDBY PUMP. THE PUMP FAILURE IS INDICATED BY A RED ALARM LIGHT AND AN ALARM CONTACT SHALL CLOSE SIGNALLING THE REMOTE ALARM MONITORING PANEL.

CONVECTOR RADIATION CONTROL

TAG	QTY	DESCRIPTION
3:TST:1	15	LOW VOLTAGE THERMOSTATS, 24 VAC, ON/OFF, W-R MODEL 1E30-311 TO
3:TST:15		
3:VLV:2	15	TWO WAY WATER CONTROL VALVES, 24 VAC, 1/2", N.O., CV = 2 TO
3:VLV:16		KREUTER MODEL VER-1115-186
3:XFMR:3	1	120/24 VAC CONTROL TRANSFORMER, HAMMOND MODEL EG2G, 100VA

THE LOW VOLTAGE THERMOSTATS CYCLES THE CONTROL VALVE AS REQUIRED TO MAINTAIN THE DESIRED SPACE TEMPERATURE.

UNIT HEATER UH-1 AND UH-2 CONTROL

TAG	QTY	DESCRIPTION
5:TST:22	2	LINE VOLTAGE THERMOSTATS, 120 VAC, ON/OFF, W-R MODEL 1A10-651
5:TST:23		

THE LINE VOLTAGE THERMOSTAT CYCLES THE UNIT HEATER FAN AS REQUIRED TO MAINTAIN THE DESIRED SPACE TEMPERATURE.

AS-BUILT DRAWINGS
November 1, 1993

NO	DATE	REVISION RECORD	AUTH	DR	CK



MIKKELSEN-COWARD & CO. LTD.
612 LOGAN AVE.
WINNIPEG, MANITOBA
R3A 0S7
TEL. (204) 775-2585
FAX. (204) 786-2189

CANADIAN COAST GUARD
BASE - SELKIRK, MB.

DATE	DRAWING NUMBER
MARCH 17, 1993	13513-7

FORCE FLOW FF-1 TO FF-5 CONTROL

TAG	QTY	DESCRIPTION
5:TST:16 TO 5:TST:21	5	LINE VOLTAGE THERMOSTATS, 120 VAC, ON/OFF, W-R MODEL 1A10-651 C/V HEAVY DUTY GUARDS
5:LLS:2 TO 5:LLS:6	5	LOW LIMIT AQUASTATS, 120 VAC, SPST, W-R MODEL 1127-9

THE LINE VOLTAGE THERMOSTAT CYCLES THE FORCE FLOW FANS AS REQUIRED TO MAINTAIN THE DESIRED SPACE TEMPERATURE. THE STRAP ON AQUASTAT WILL PREVENT THE FAN FROM ACTIVATING ON A LOW RETURN WATER TEMPERATURE BELOW 38°C.

GAS FIRED INFRARED HEATERS BU-1 TO BU-9 CONTROL

TAG	QTY	DESCRIPTION
3:DS:1 TO 3:DS:4	4	DOOR LIMIT SWITCH, DPDT, BURGESS MODEL C2VGHM6S, 1/2" NPS
3:TC:1 TO 3:TC:4	4	OUTDOOR AIR THERMOSTAT, 120 VAC, SPST, PENN A19ABC-24
3:R:7 TO 3:5:10	4	GENERAL PURPOSE RELAY, MODEL MK2P-1, 24 VAC, DPDT, PF083A BASES

THE INFRARED HEATERS ARE SUPPLIED COMPLETE WITH ALL INTERNAL CONTROLS, INCLUDING ROOM TEMPERATURE THERMOSTATS.

THE HEATERS ARE CYCLED FROM THESE THERMOSTATS BUT ARE PREVENTED FROM OPERATING WHEN THE OVERHEAD DOOR IS OPEN AS DETERMINED BY THE DOOR LIMIT SWITCHES, AND THE OUTDOOR AIR CONTROLLER WHEN THE OUTSIDE AIR TEMPERATURE IS ABOVE 0°C (ADJUSTABLE).

REMOTE ALARM MONITORING

TAG	QTY	DESCRIPTION
5:TA:1 TO 5:TA:4	4	LOW VOLTAGE THERMOSTATS, 24 VAC, ON/OFF, W-R MODEL 1E30-311

LOW TEMPERATURE ALARM THERMOSTATS ARE WIRED IN PARALLEL SO THAT IF ANY OF THE FOUR MONITORED SPACE TEMPERATURES DROP BELOW 10°C, THE DRY CONTACT CLOSURES SIGNALLING THE REMOTE ALARM MONITORING PANEL.

A HEATING PUMP FLOW FAILURE ALARM PROVIDED BY THE AIR HANDLING CONTROL PANEL SHALL ENERGIZE A RELAY ALSO PROVIDING A DRY CONTACT CLOSURE TO SIGNAL THE REMOTE ALARM MONITORING PANEL.

ELECTRICAL ROOM EXHAUST FAN EF-12 CONTROL

TAG	QTY	DESCRIPTION
5:TST:24	1	LINE VOLTAGE THERMOSTATS, 120 VAC, ON/OFF, W-R MODEL 1A10-651

LINE VOLTAGE THERMOSTAT SHALL CYCLE THE EXHAUST FAN ON A RISE IN ROOM TEMPERATURE IN ORDER TO MAINTAIN TEMPERATURE BELOW SETPOINT.

AS-BUILT DRAWINGS
November 1, 1993

NO	DATE	REVISION RECORD	AUTH	DR	CK



MIKKELSEN-COWARD & CO. LTD.
612 LOGAN AVE.
WINNIPEG, MANITOBA
R3A 0S7
TEL. (204) 775-2585
FAX. (204) 786-2189

**CANADIAN COAST GUARD
BASE - SELKIRK, MB.**

LADNUTS, PLUMBING & HTG. (1993) LTD. P.O. 18, GROUP 116, HWY. 1 WINNIPEG, MANITOBA	SCALE	DATE	DESIGNED BY	DRAWN BY
				V.V.S.
TITLE		MATERIAL LIST AND SEQUENCE OF OPERATION		
DATE		DRAWING NUMBER		
MARCH 17, 1993		13513-8		