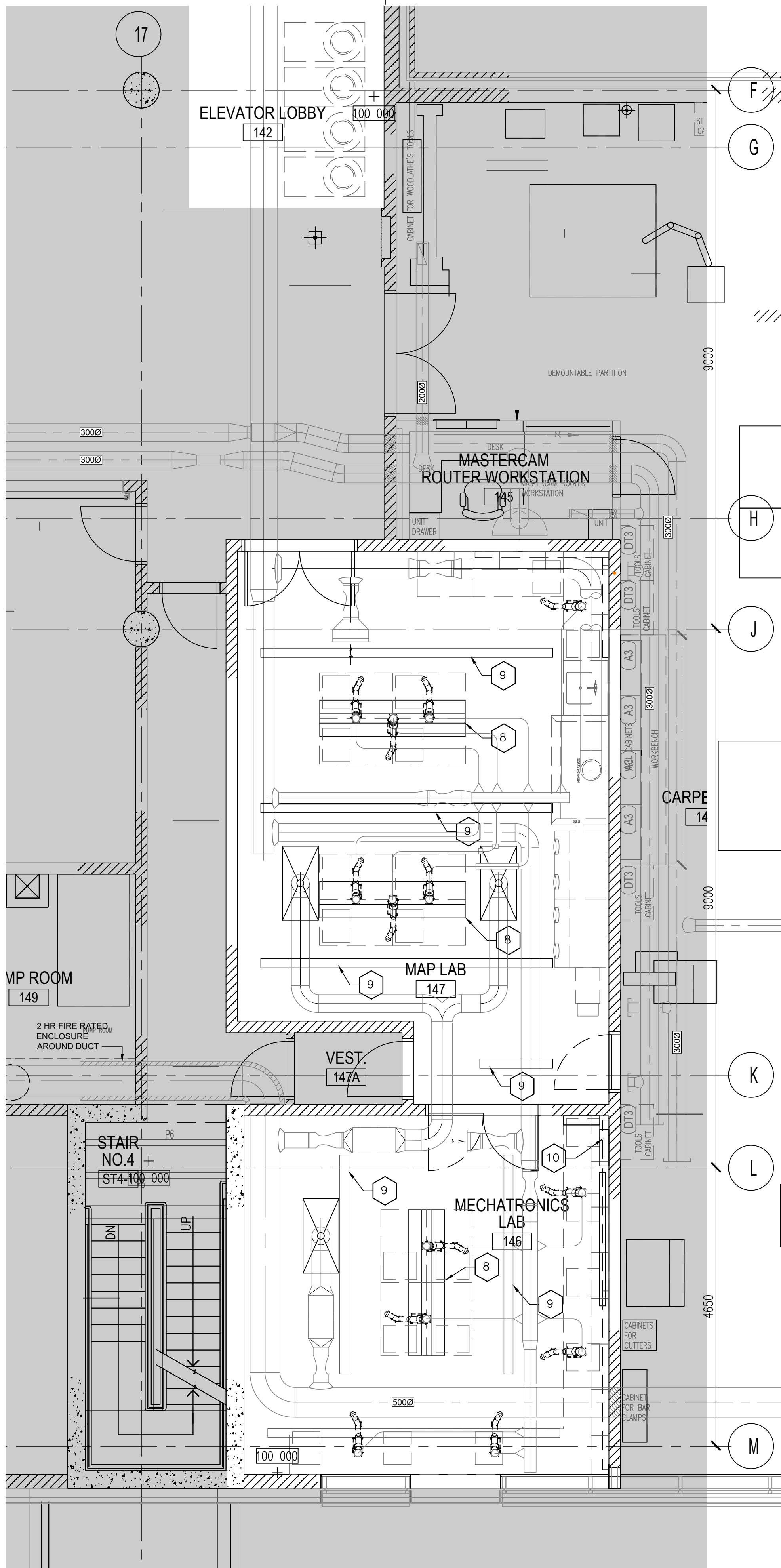


1 PARTIAL FLOOR PLAN
A-101 1:50



2 PARTIAL REFLECTED CEILING PLAN
A-101 1:50

GENERAL NOTES:

1. SEE SHEET A-002 CASEWORK SYMBOLS, ABBREVIATIONS, GENERAL LAB CASEWORK NOTES, EQUIPMENT SCHEDULE, AND SINK SCHEDULE.
2. ALL LAB TABLE TOPS ARE EPOXY RESIN MOUNTED AT 915MM AFF UNLESS NOTED OTHERWISE.
3. SEE ELECTRICAL DRAWINGS FOR LOCATION AND MOUNTING HEIGHTS OF ELECTRICAL RACEWAYS
4. SEE MECHANICAL DRAWINGS FOR COORDINATION OF LOCAL EXHAUST PORT LOCATIONS
5. OVERHEAD SERVICE CARRIER SHALL BE BY LAB FURNISHING SECTIONS, COORDINATE SUPPORT TO STRUCTURE WITH ALL TRADES. COORDINATE LOCATION OF SUPPORTS WITH REFLECTED CEILING PLANS.
6. ALL DIMENSIONS ARE TO THE FACE OF PAINTED SURFACE UNLESS NOTED OTHERWISE

SHEET KEYNOTES:

- 1 1-HR WALL. SEAL ALL PENETRATIONS WITH APPROVED FIRESTOP SYSTEM
- 2 NEW 45MIN. DOOR AND FRAME
- 3 MOBILE ISLAND BENCH WITH OVERHEAD SERVICE CARRIER AND MOBILE BASE CABINETS. SEE SHEET A-002 FOR CASEWORK TYPE DETAIL.
- 4 PERIMETER MOVABLE BENCH WITH UPPER WALL CABINETS AND MOBILE BASE CABINETS. SEE SHEET A-002 FOR CASEWORK TYPE DETAIL.
- 5 FILL THE GAP WITH BENCH. BENCH TO MATCH EXISTING ADJACENT METAL FRAMING AND EPOXY RESIN TOP.
- 6 N2 CYLINDERS NOT IN CONTRACT. MECHANICAL TO PROVIDE PIPING TO ROOM 146 AND ROOM 147.
- 7 AR CYLINDERS NOT IN CONTRACT. MECHANICAL TO PROVIDE PIPING TO ROOM 146 AND ROOM 147.
- 8 CEILING SERVICE CARRIER (CSC). SEE INTERIOR ELEVATIONS FOR CSC DETAILS POWER AND UTILITY OUTLETS.
- 9 CEILING SUSPENDED LIGHT FIXTURE. SEE ELECTRICAL DRAWINGS.
- 10 NEW LIGHT FIXTURE ATTACHED TO BOTTOM OF UPPER WALL CABINETS. SEE ELECTRICAL DRAWINGS.
- 11 EXISTING BENCH TO REMAIN. PROVIDE MOBILE BASE CABINETS. SEE SHEET A-002 FOR CASEWORK TYPE DETAIL.
- 12 PROVIDE UPPER WALL CABINETS. SEE SHEET A-002 FOR CASEWORK TYPE DETAIL.

Public Works and
Government Services Canada
Travaux publics et
Services gouvernementaux Canada

ARCHITECTURE 49

201-1300 Yonge Street
Toronto, Ontario M4T1X3 Canada
TEL: 1416.368.6987 | FAX: 1.416.869.9075
architecture49.com

05	ADDENDUM#1	2020/10/13
04	ISSUED FOR FINAL TENDER	2020/09/18
03	ISSUED FOR TENDER	2020/08/21
02	99% CD	2020/08/04
01	50% CD	2020/07/07
revision		date

Do not scale drawings.
Verify all dimensions and conditions on site and immediately
notify the Departmental Representative of all discrepancies.

A	Detail No.
B	No. du détail
C	drawing no. - where detail required dessin no. - où détail exigé
C	drawing no. - where detailed dessin no. - où détaillé

project title
titre du projet
HAMILTON ONTARIO
NRCAN
183 LONGWOOD ROAD SOUTH
MAP LABORATORY RENOVATION

drawing title
titre du dessin
PARTIAL FLOOR
AND REFLECTED CEILING PLAN

drawn by
dessiné par CC

designed by
conc par SC

approved by
approuvé par RE

bid
offre - project manager
administrateur de projets

project date
date du projet 2020-07-07

project no.
no. du projet R.106310.002

drawing no.
dessiné no. A-101