



Date: October 21, 2020

Title: Mechanical & Electrical Upgrades, New Delhi, India

Solicitation Number: 21-175731

The following supplements and/or supersedes the solicitation document. This addendum forms part of the contract documents and is to be read, interpreted, and coordinated with all other parts. Any change to the cost of the work as a result of this addendum is to be included in the price proposal.

Addendum # 1

1. Appendix “C” – Photographs

DELETE: Appendix “C” – Photographs in its entirety.

INSERT: New Appendix “C” – Photographs attached to Addendum #1.

All other conditions and requirements remain unchanged

Request for Proposals (RFP) for

MECHANICAL AND ELECTRICAL UPGRADES

High Commission of Canada, New Delhi, India

Solicitation Number 21-175731 Project Number: B-DELHI-116



Global Affairs
Canada

Affaires mondiales
Canada

October 2020

SITE PLAN

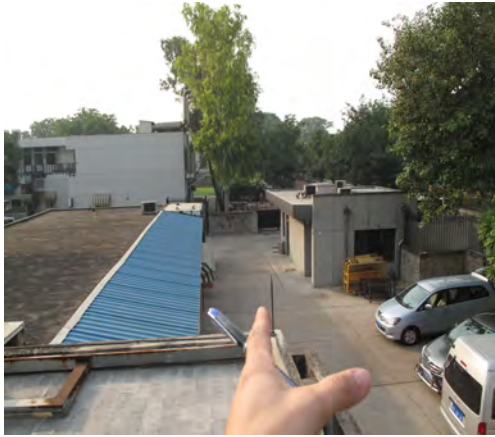
High Commission of Canada, Chanakyapuri, New Delhi



SITE PLAN DETAILS



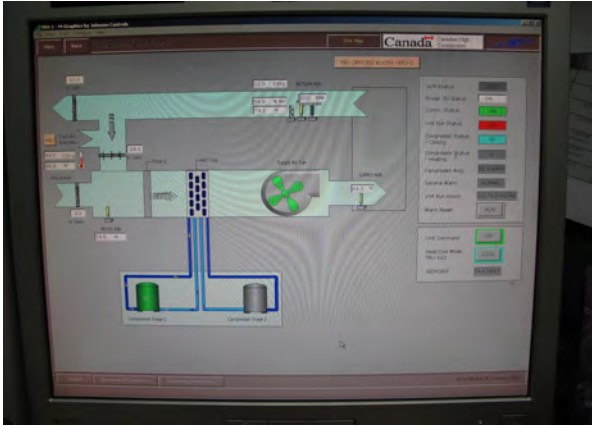
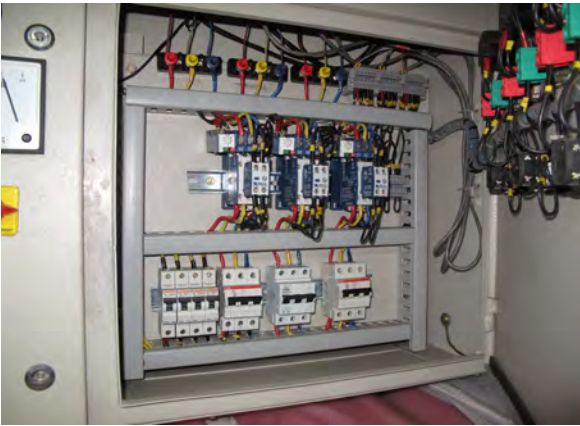
OVERVIEW OF ROOFTOP UNITS (RTU) & (HRU)



EXISTING ROOF TOP UNITS AND DUCTS



EXISTING STARTER PANEL, CONTROL PANEL (RM 147), METESYS & TRANE INTEGRATORS, DDC



SPECIFICATIONS OF RTUs (Typical)

THE TRANE COMPANY
A DIVISION OF AMERICAN STANDARD INC.
CLARKSVILLE, TN 37040-1008

MODEL NO. WCH200BD00GA
SERIAL NO. 714101035D
DATE OF MFG. 4/2007
ELECTRICAL RATING 380-415/50/3
MIN/MAX OPER. VOLT 357/440
MIN CKT AMP 53
MFS/+MCB 60
MOP N/A

CONTROL CKT. VOLTS 24 VAC
MAX DISCHARGE TEMP IS 94 DEG C.
EXT STATIC PRESS MM OF WATER

MIN TEST PRESSURE HIGH 278 LOW 144 PSIG

THIS UNIT SHOULD BE INSTALLED AND REGULARLY MAINTAINED IN ACCORDANCE WITH THE SERVICE LITERATURE MANUAL(S).

COMP	QTY	PH	HZ	RLA-VOLTS	LRA
# 1	1	3	50	17.4-380	118
# 2	1	3	50	17.4-380	118

FAN QTY HZ PH FLA-VOLTS HP FACTORY CHARGED COND 2 50 1 2.9-380 .75 CKT#1 19.30 LBS R22
EVAP STANDARD 1 50 3 7.6-380 3 CKT#2 19.30 LBS R22
EVAP OVERSIZE 1 50 3 11.0-380 5

SCRATCH INK OFF SQUARE WHEN OVERSIZE MOTOR IS INSTALLED

DATA FOR UNITS WITH ELECTRIC HEAT ACCESSORY		STANDARD EVAP MOTOR		OVERSIZE EVAP MOTOR		MOP
AMERICAN STANDARD HEATER MODEL	HTR RATED VOLTS	MIN CKT AMP	MFS/+MCB	MIN CKT AMP	MFS/+MCB	
AHHHTRN436A	380	22	96	100	99	N/A
AHHHTRN436A	415	26	100	110	103	N/A
AHHHTRN454A	380	33	117	125	121	N/A
AHHHTRN454A	415	40	123	125	127	N/A
AHHHTRN472A	380	45	139	150	142	N/A
AHHHTRN472A	415	53	147	150	150	N/A
NONE/NUL						

SCRATCH INK OFF SQUARE OF SPECIFIC HEATER INSTALLED.
COCHER POUR INDIQUER LE MODELE INSTALLE.

CLEARANCE TO COMBUSTIBLE MATERIAL W/WO ELECTRIC HEAT (INCHES):
TOP 72; L.SIDE 24; R.SIDE 24; FRONT 24; BACK 18; DUCT 0.

+ HACR TYPE REQUIRED PER NEC

ASSEMBLED IN U.S.A. X39630365-01

THE TRANE COMPANY
A DIVISION OF AMERICAN STANDARD INC.
CLARKSVILLE, TN 37040-1008

MODEL NO. WCH200BD00GA
SERIAL NO. 715100446D
DATE OF MFG. 4/2007
ELECTRICAL RATING 380-415/50/3
MIN/MAX OPER. VOLT 357/440
MIN CKT AMP 53
MFS/+MCB 60
MOP N/A

CONTROL CKT. VOLTS 24 VAC
MAX DISCHARGE TEMP IS 94 DEG C.
EXT STATIC PRESS MM OF WATER

MIN TEST PRESSURE HIGH 278 LOW 144 PSIG

THIS UNIT SHOULD BE INSTALLED AND REGULARLY MAINTAINED IN ACCORDANCE WITH THE SERVICE LITERATURE MANUAL(S).

COMP	QTY	PH	HZ	RLA-VOLTS	LRA
# 1	1	3	50	17.4-380	118
# 2	1	3	50	17.4-380	118

FAN QTY HZ PH FLA-VOLTS HP FACTORY CHARGED COND 2 50 1 2.9-380 .75 CKT#1 19.30 LBS R22
EVAP STANDARD 1 50 3 7.6-380 3 CKT#2 19.30 LBS R22
EVAP OVERSIZE 1 50 3 11.0-380 5

SCRATCH INK OFF SQUARE WHEN OVERSIZE MOTOR IS INSTALLED

DATA FOR UNITS WITH ELECTRIC HEAT ACCESSORY		STANDARD EVAP MOTOR		OVERSIZE EVAP MOTOR		MOP
AMERICAN STANDARD HEATER MODEL	HTR RATED VOLTS	MIN CKT AMP	MFS/+MCB	MIN CKT AMP	MFS/+MCB	
AHHHTRN436A	380	22	96	100	99	N/A
AHHHTRN436A	415	26	100	110	103	N/A
AHHHTRN454A	380	33	117	125	121	N/A
AHHHTRN454A	415	40	123	125	127	N/A
AHHHTRN472A	380	45	139	150	142	N/A
AHHHTRN472A	415	53	147	150	150	N/A
NONE/NUL						

SCRATCH INK OFF SQUARE OF SPECIFIC HEATER INSTALLED.
COCHER POUR INDIQUER LE MODELE INSTALLE.

CLEARANCE TO COMBUSTIBLE MATERIAL W/WO ELECTRIC HEAT (INCHES):
TOP 72; L.SIDE 24; R.SIDE 24; FRONT 24; BACK 18; DUCT 0.

+ HACR TYPE REQUIRED PER NEC

ASSEMBLED IN U.S.A. X39630365-01

THE TRANE COMPANY
A DIVISION OF AMERICAN STANDARD INC.
CLARKSVILLE, TN 37040-1008

MODEL NO. WCH200BD00GA
SERIAL NO. 714101106D
DATE OF MFG. 4/2007
ELECTRICAL RATING 380-415/50/3
MIN/MAX OPER. VOLT 357/440
MIN CKT AMP 53
MFS/+MCB 60
MOP N/A

CONTROL CKT. VOLTS 24 VAC
MAX DISCHARGE TEMP IS 94 DEG C.
EXT STATIC PRESS MM OF WATER

MIN TEST PRESSURE HIGH 278 LOW 144 PSIG

THIS UNIT SHOULD BE INSTALLED AND REGULARLY MAINTAINED IN ACCORDANCE WITH THE SERVICE LITERATURE MANUAL(S).

COMP	QTY	PH	HZ	RLA-VOLTS	LRA
# 1	1	3	50	17.4-380	118
# 2	1	3	50	17.4-380	118

FAN QTY HZ PH FLA-VOLTS HP FACTORY CHARGED COND 2 50 1 2.9-380 .75 CKT#1 19.30 LBS R22
EVAP STANDARD 1 50 3 7.6-380 3 CKT#2 19.30 LBS R22
EVAP OVERSIZE 1 50 3 11.0-380 5

SCRATCH INK OFF SQUARE WHEN OVERSIZE MOTOR IS INSTALLED

DATA FOR UNITS WITH ELECTRIC HEAT ACCESSORY		STANDARD EVAP MOTOR		OVERSIZE EVAP MOTOR		MOP
AMERICAN STANDARD HEATER MODEL	HTR RATED VOLTS	MIN CKT AMP	MFS/+MCB	MIN CKT AMP	MFS/+MCB	
AHHHTRN436A	380	22	96	100	99	N/A
AHHHTRN436A	415	26	100	110	103	N/A
AHHHTRN454A	380	33	117	125	121	N/A
AHHHTRN454A	415	40	123	125	127	N/A
AHHHTRN472A	380	45	139	150	142	N/A
AHHHTRN472A	415	53	147	150	150	N/A
NONE/NUL						

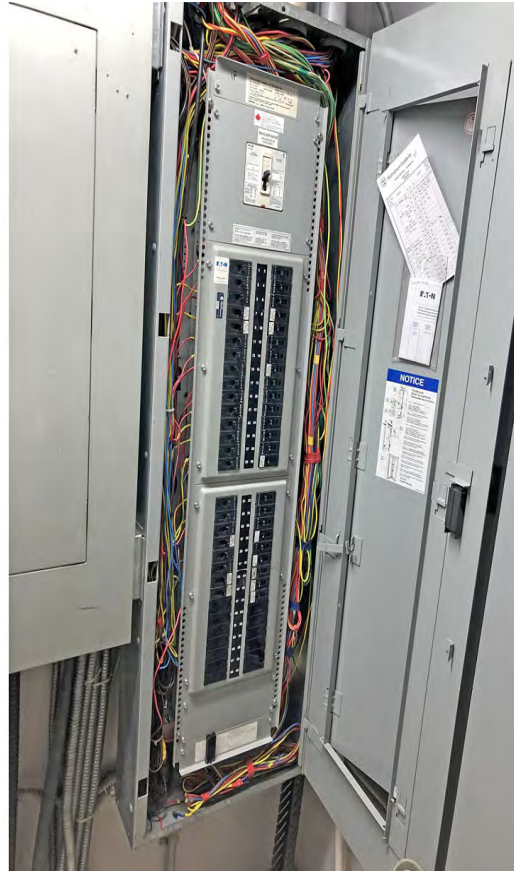
SCRATCH INK OFF SQUARE OF SPECIFIC HEATER INSTALLED.
COCHER POUR INDIQUER LE MODELE INSTALLE.

CLEARANCE TO COMBUSTIBLE MATERIAL W/WO ELECTRIC HEAT (INCHES):
TOP 72; L.SIDE 24; R.SIDE 24; FRONT 24; BACK 18; DUCT 0.

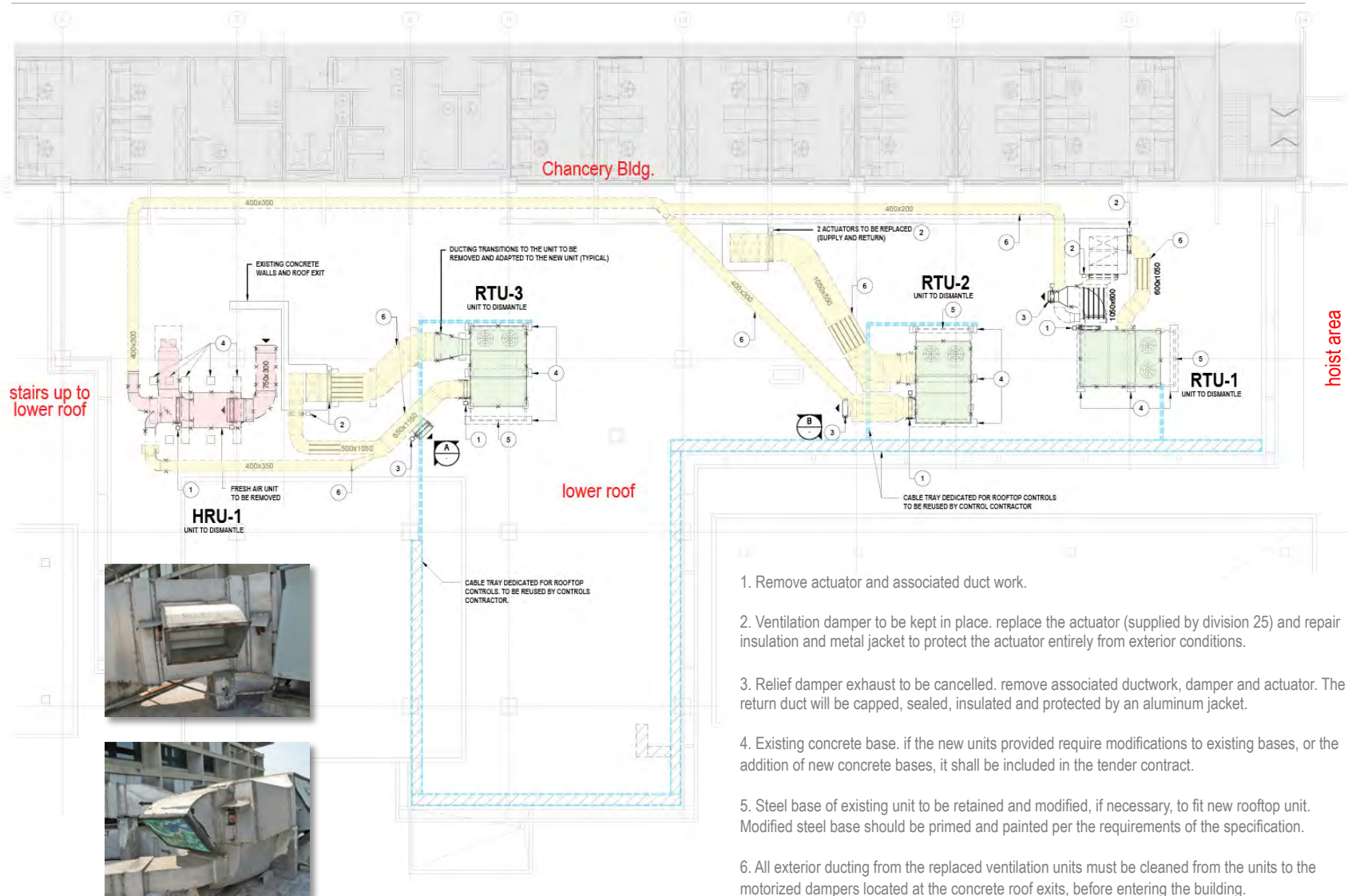
+ HACR TYPE REQUIRED PER NEC

ASSEMBLED IN U.S.A. X39630365-01

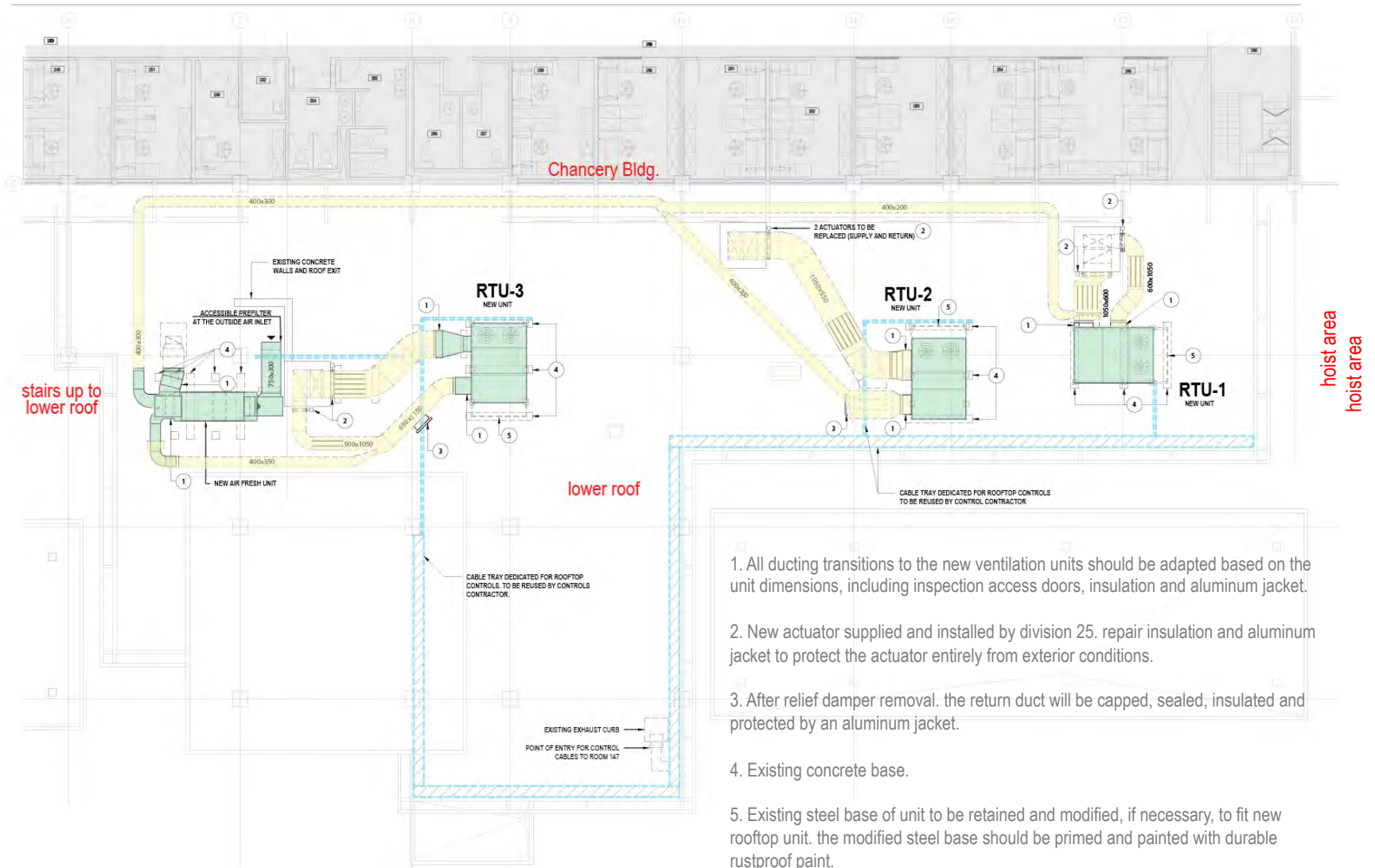
EXISTING ELECTRICAL PANELS



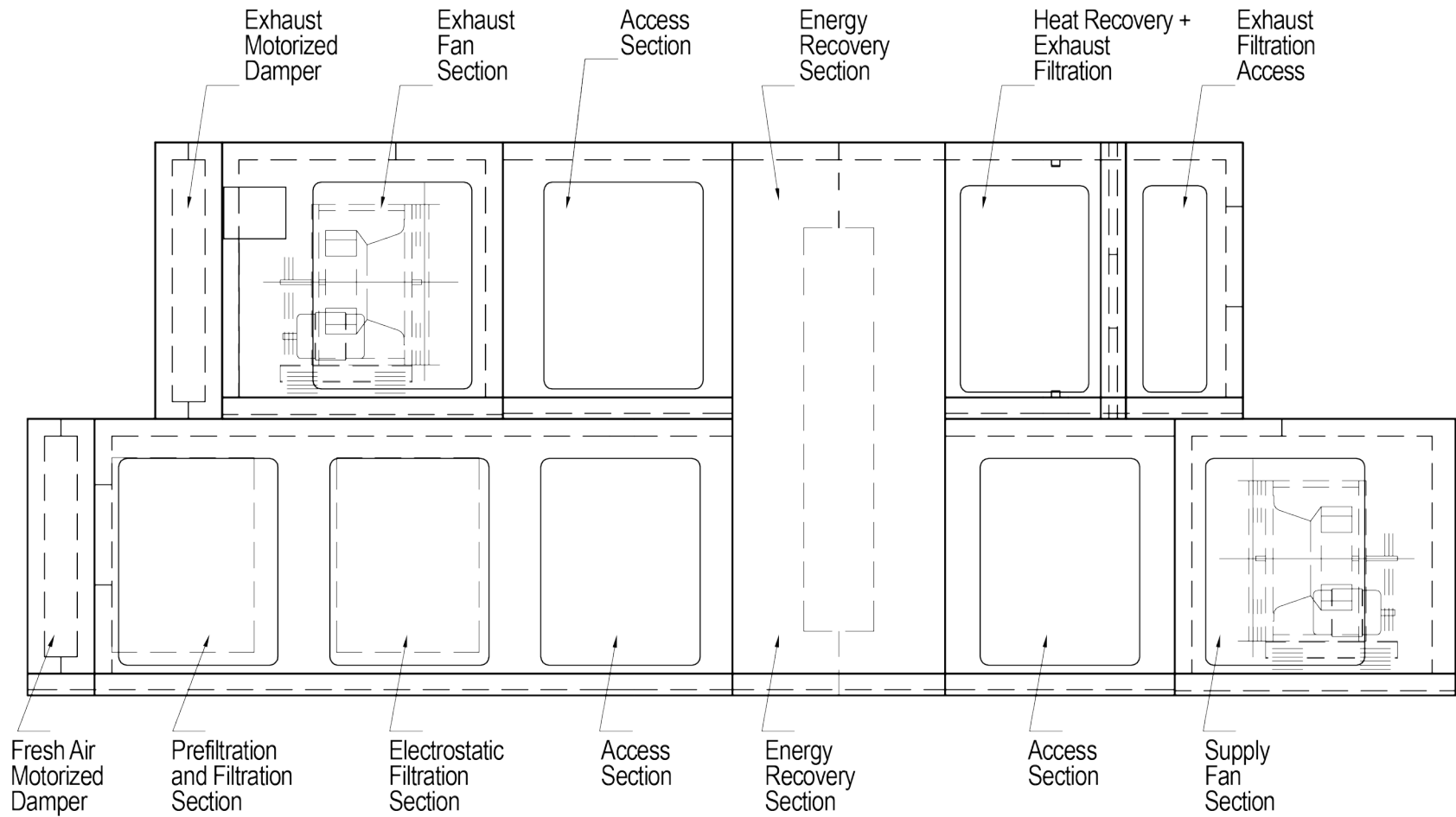
DEMOLITION OF EXISTING ROOF TOP UNITS.



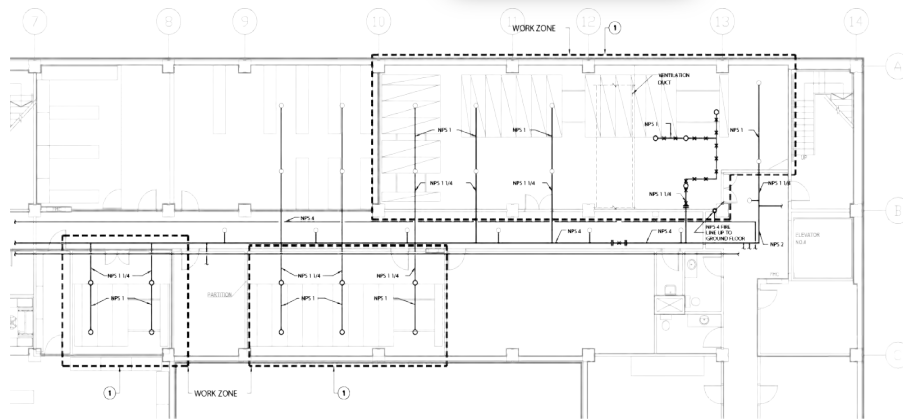
NEW ROOF TOP UNITS (RTU)



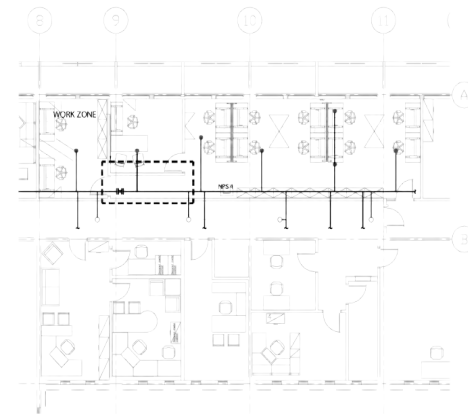
DEDICATED OUTSIDE AIR (DOA) UNIT DETAIL - HRU-1



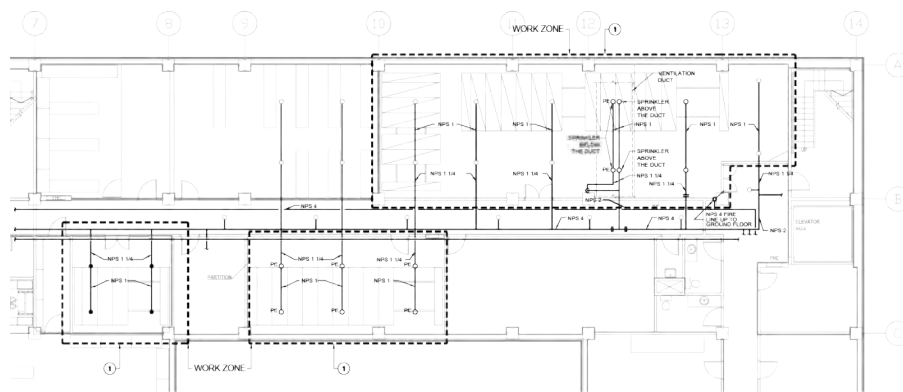
SPRINKLERS MODIFICATIONS - TYPICAL CEILING IN CORRIDORS



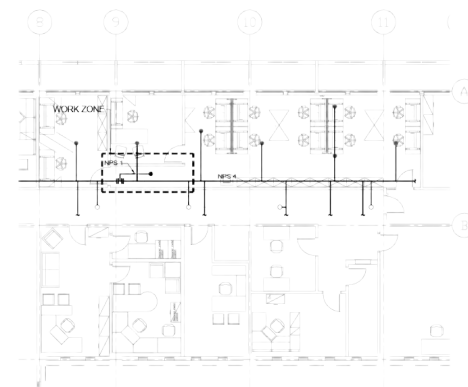
BASEMENT FLOOR PLAN - EXISTING LAYOUT



THIRD FLOOR PLAN - EXISTING LAYOUT



BASEMENT FLOOR PLAN - NEW LAYOUT



THIRD FLOOR PLAN - NEW LAYOUT

EMERGENCY LIGHTING UNITS TO BE REPLACED (TYPICAL)

