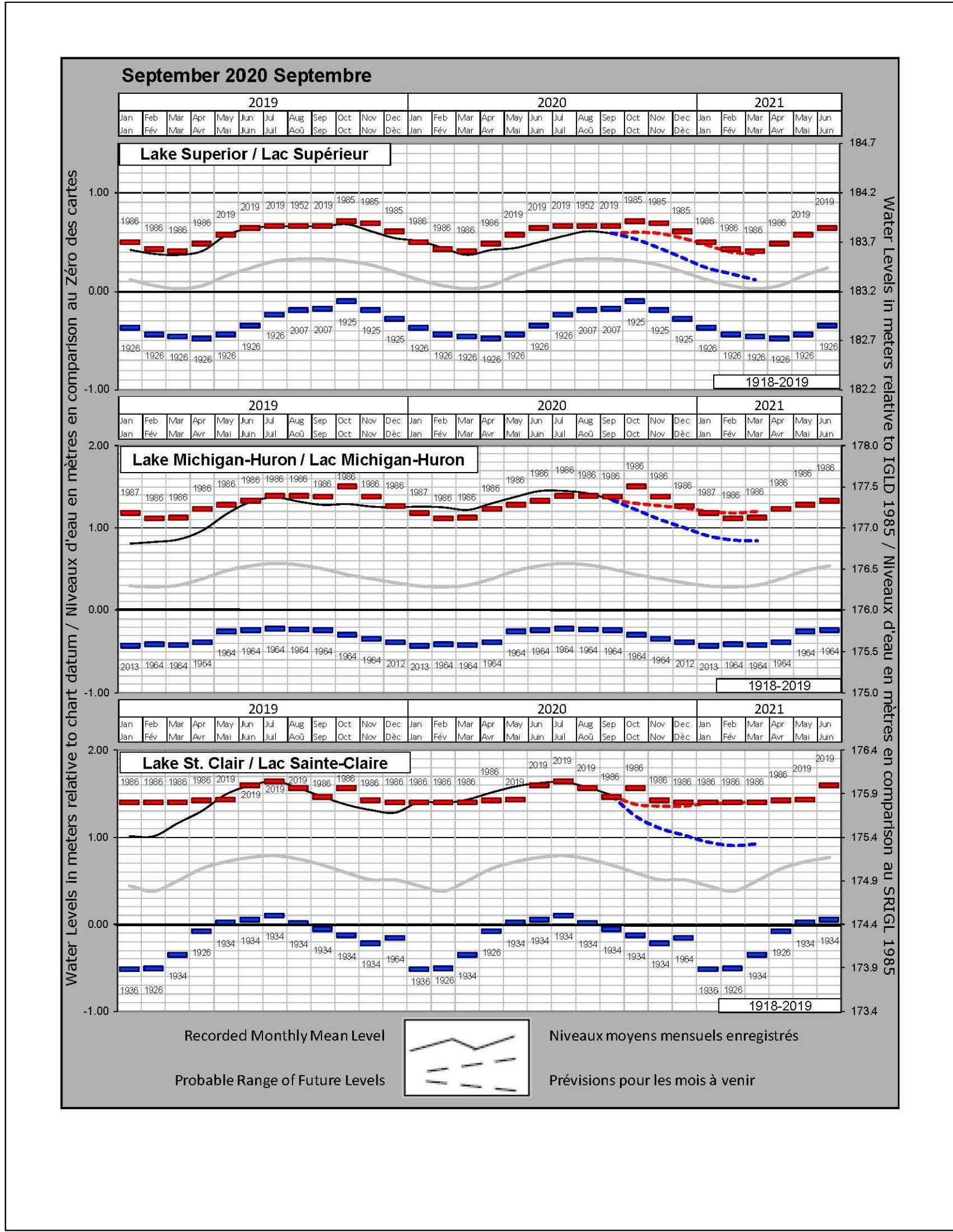


WATER LEVEL CHART




CURRENT INFORMATION CAN BE FOUND AT:
http://www.waterlevels.gc.ca/C&A/bulletin_e.html

INFORMATION OBTAINED FROM MONTHLY WATER LEVEL BULLETIN GREAT LAKES AND MONTREAL HARBOUR CANADIAN HYDROGRAPHIC SERVICE.


2020 FISHERMAN'S BASIN JETTY #5 REHABILITATION, RONDEAU (ERIEAU), ONTARIO

DRAWING INDEX

- MA-00 - TITLE PAGE
- MA-01 - SITE PLAN AND EXISTING CONDITIONS AND REMOVALS
- MA-04 - EXISTING CONDITIONS & NEW WORK JETTY #5
- MA-05 - EXISTING CONDITIONS & REMOVALS JETTY #5
- MA-06 - TYP. DETAILS FOR JETTY #5
- MA-07 - TYP. DETAILS FOR JETTY #5
- MA-08 - TYP. DETAILS FOR JETTY #5
- MA-09 - CONCRETE APPROACH RAMP & TRANSITION PLATE DETAILS FOR JETTY #5
- MA-10 - NEW STEEL FENDER PIPE PILE DETAILS





GOVERNMENT OF CANADA
FISHERIES AND OCEANS



GOUVERNEMENT DU CANADA
PÊCHES ET OCÉANS


SMALL CRAFT HARBOURS
CENTRAL AND ARCTIC REGION





Riggs Engineering Ltd.
1240 Commissioners Rd. W., Suite 205
London, Ontario,
N6K 1C7
Tel: (519) 657-1040
Fax: (519) 657 8631
Website: www.riggsengineering.com

1 Detail No.
2 drawing no. – where detail required refers to MA–
3 drawing no. – where detailed refers to MA–

Stamp:


NOTES:

REVISIONS:DATE:

SCALE:CLASS:

AS NOTED

PROJECT:

2020 FISHERMAN'S BASIN JETTY #5 REHABILITATION,

DESCRIPTION:

TITLE PAGE

DRAWN:APPROVED:

SVBR

DATE:DATE:

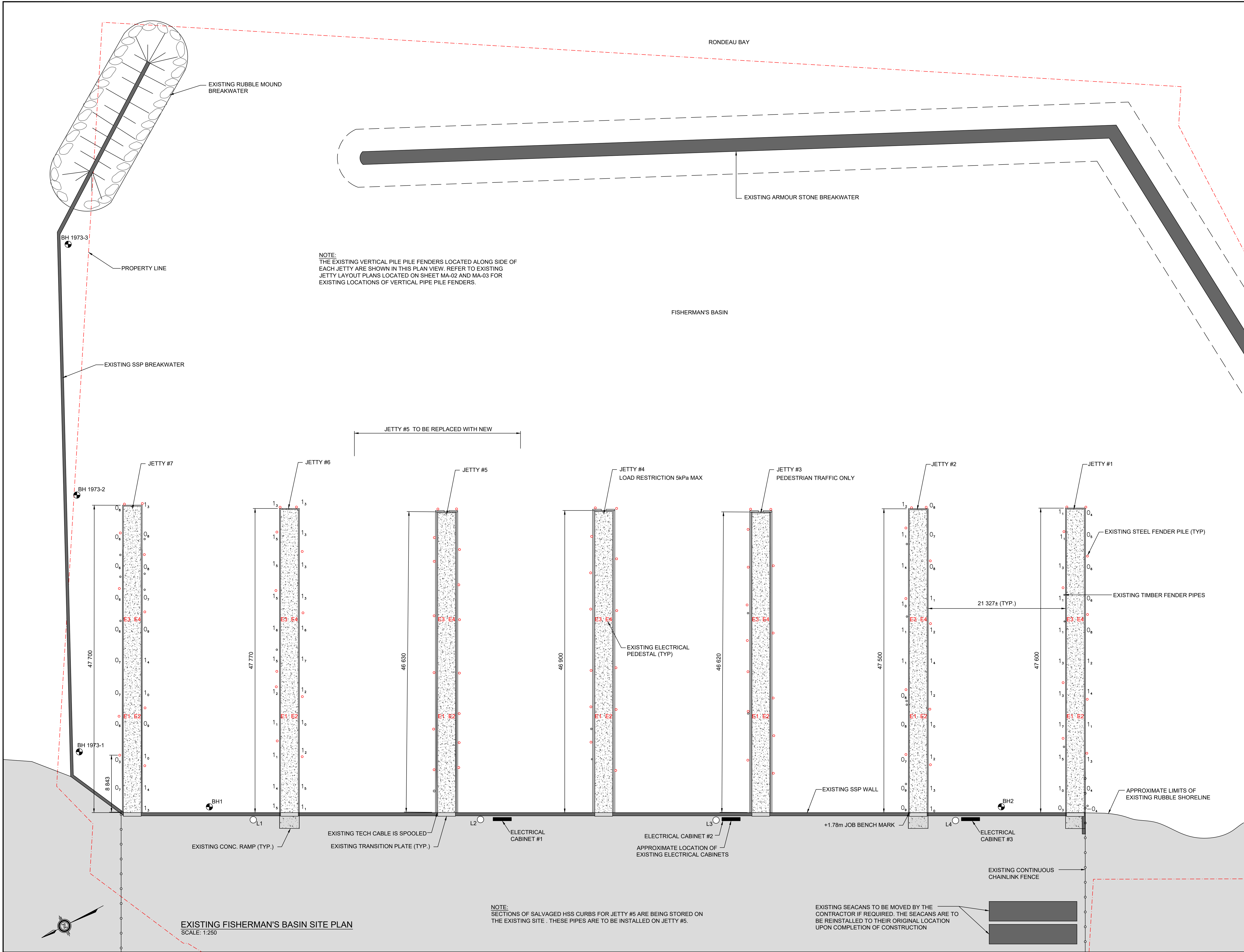
2020-10-192020-10-19


LOCATION:

RONDEA (ERIEAU)
ONTARIO


DRAWING NO.:LOCATOR CODE:

MA-00723269







GOVERNMENT OF CANADA
FISHERIES AND OCEANS



GOUVERNEMENT DU CANADA
PÊCHES ET OCÉANS

SMALL CRAFT HARBOURS
CENTRAL AND ARCTIC REGION






Riggs Engineering Ltd.
1240 Commissioners Rd. W., Suite 205
London, Ontario,
N6K 1C7
Tel: (519) 657-1040
Fax: (519) 657 8631
Website: www.riggsengineering.com

1 Detail No.

2 drawing no. - where detail required refers to MA-

3 drawing no. - where detailed refers to MA-

Stamp:



LEGEND

L#

EXISTING PROPERTY LINE

+1.68 x

EXISTING SURFACE ELEVATIONS

—

EXISTING CHAINLINK FENCE

0_s

EXISTING SOUNDINGS (RELATIVE TO CHART DATUM)

BH#

BOREHOLE LOCATIONS
(SEE REPORT IN SPECIFICATION)

E#

EXISTING ELECTRICAL PEDESTALS

o

EXISTING TIMBER FENDER PILES

o

EXISTING STEEL FENDER PILES

REVISIONS:

DATE:

SCALE:

CLASS:

AS NOTED

PROJECT:

2020 FISHERMAN'S BASIN
JETTY #5 REHABILITATION,

DESCRIPTION:

SITE PLAN OF
EXISTING CONDITIONS
AND REMOVALS

DRAWN:

APPROVED:

SV

BR

DATE:

DATE:

2020-10-19

2020-10-19

LOCATION:

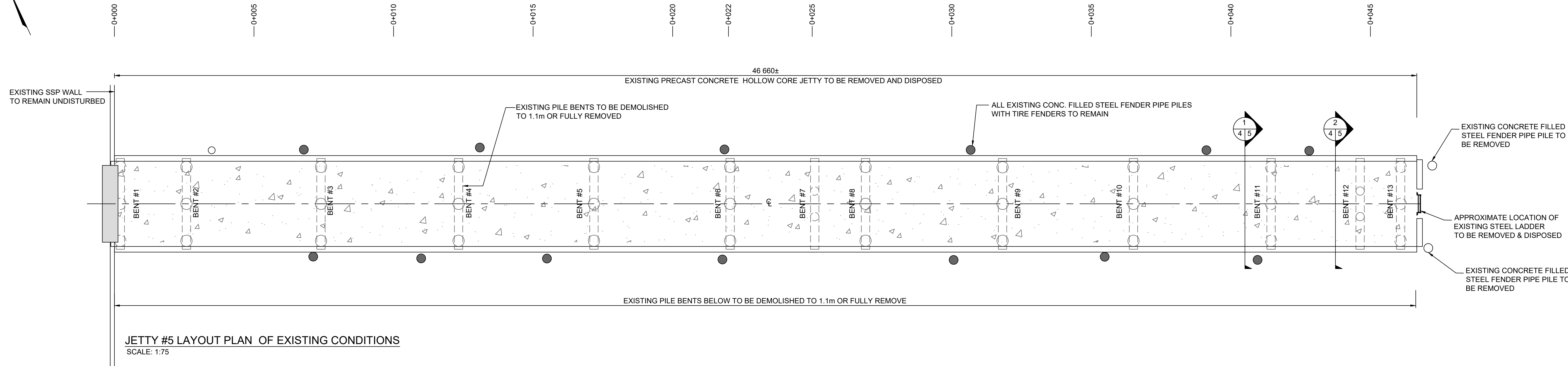
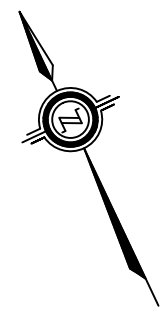
RONDEAU (ERIEAU)
ONTARIO

DRAWING NO.:

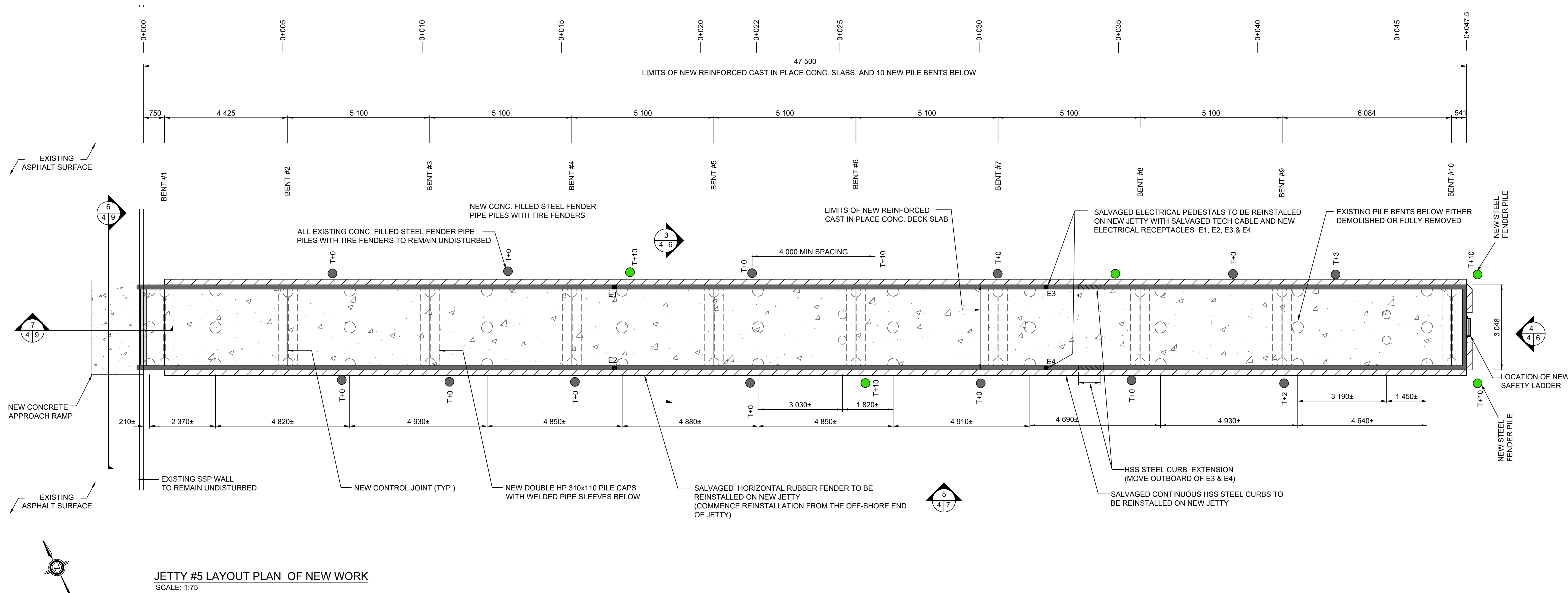
LOCATOR CODE:

MA-01

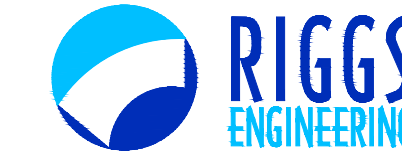
723269



NOTE:
ESTABLISH CENTERLINE OF JETTY #5 BEFORE REMOVALS. PROJECT CENTRELINE SHOREWARD AND SET TWO FIXED CONTROL POINTS TO RE-ESTABLISH THE CENTRELINE FOR NEW CONSTRUCTION.



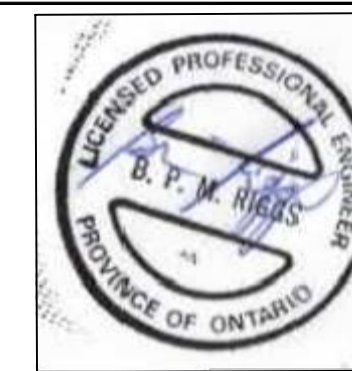
SMALL CRAFT HARBOURS
CENTRAL AND ARCTIC REGION



Riggs Engineering Ltd.
1240 Commissioners Rd. W., Suite 205
London, Ontario,
N6K 1C7
Tel: (519) 657-1040
Fax: (519) 657 8631
Website: www.riggsgengineering.com

- 1 Detail No.
2 drawing no. - where detail required refers to MA--
3 drawing no. - where detailed refers to MA--

Stamp:



LEGEND:

- EXISTING TIMBER FENDER PILES (TO BE REMOVED)
● EXISTING STEEL FENDER PILES (TO REMAIN)
● NEW STEEL FENDER PILE
T+2 TIRES TO BE ADDED

REVISIONS:	DATE:

SCALE:	CLASS:
AS NOTED	

PROJECT:

2020 FISHERMAN'S BASIN
JETTY #5 REHABILITATION

DESCRIPTION:

EXISTING CONDITIONS
& NEW WORK
JETTY #5

DRAWN: SV	APPROVED: BR
DATE: 2020-10-19	DATE: 2020-10-19

LOCATION:

RONDEAU (ERIEAU)
ONTARIO

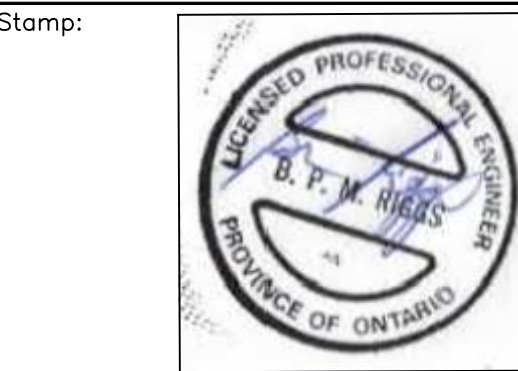
DRAWING NO.: MA-04	LOCATOR CODE: 723269
-----------------------	-------------------------

SMALL CRAFT HARBOURS
CENTRAL AND ARCTIC REGION



Riggs Engineering Ltd.
1240 Commissioners Rd. W., Suite 205
London, Ontario,
N6K 1C7
Tel: (519) 657-1040
Fax: (519) 657 8631
Website: www.riggsgengineering.com

- 1 Detail No.
2 drawing no. - where detail required refers to MA-
3 drawing no. - where detailed refers to MA-



NOTES:

REVISIONS:	DATE:

SCALE: AS NOTED	CLASS:
---------------------------	--------

PROJECT:

**2020 FISHERMAN'S BASIN
JETTY #5 REHABILITATION**

DESCRIPTION:

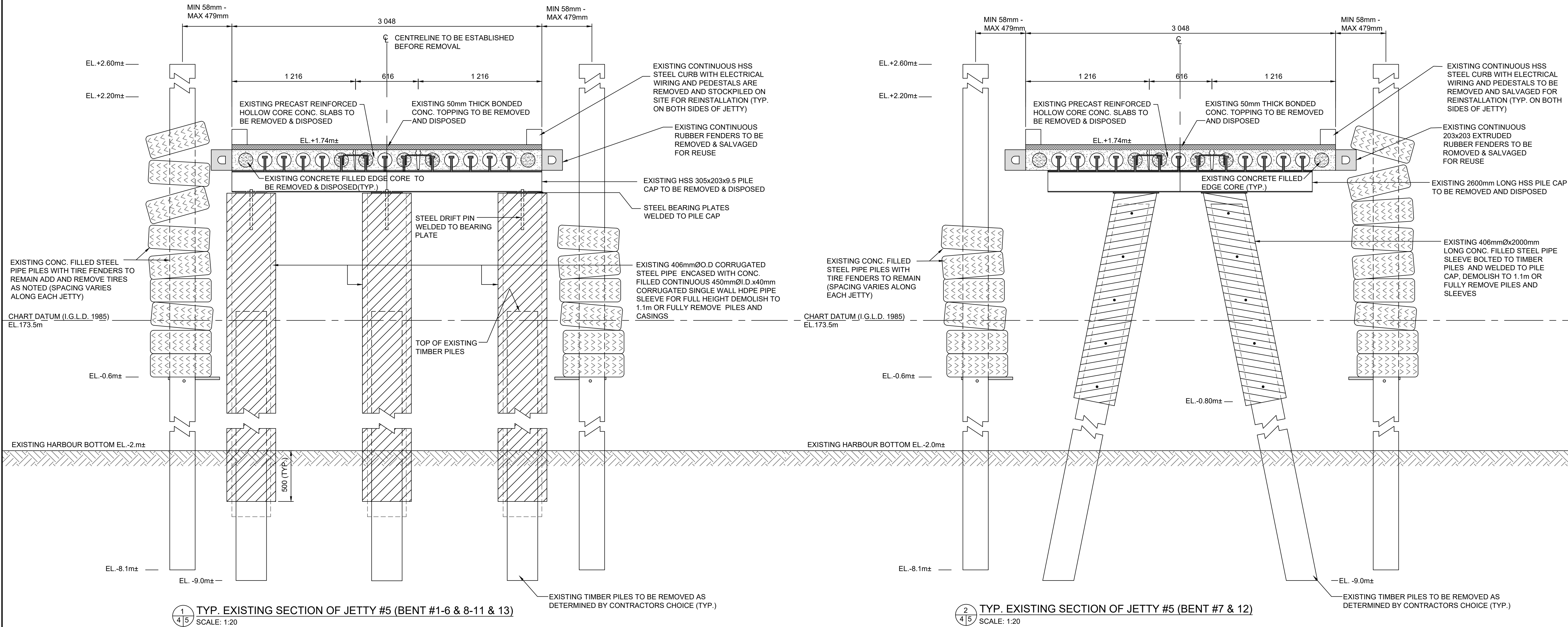
**EXISTING CONDITIONS
AND REMOVALS JETTY #5**

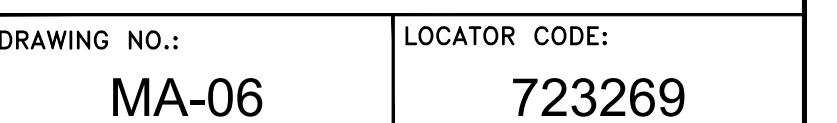
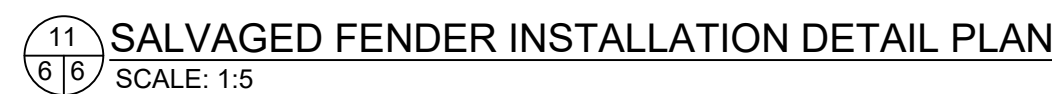
DRAWN: SV	APPROVED: BR
DATE: 2020-10-19	DATE: 2020-10-19

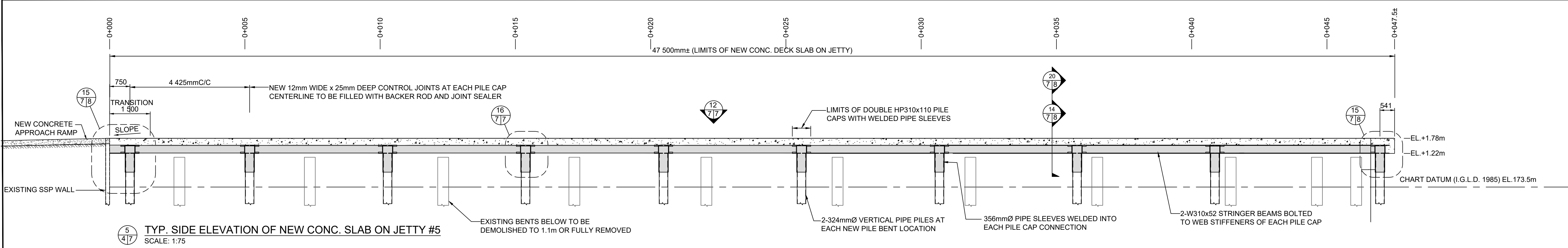
LOCATION:

**RONDEAU (ERIEAU)
ONTARIO**

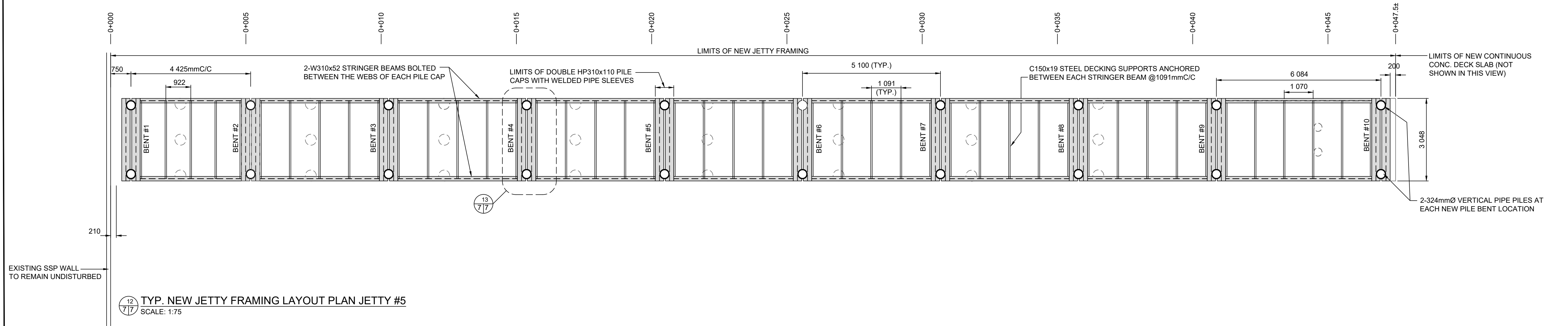
DRAWING NO.: MA-05	LOCATOR CODE: 723269
------------------------------	--------------------------------



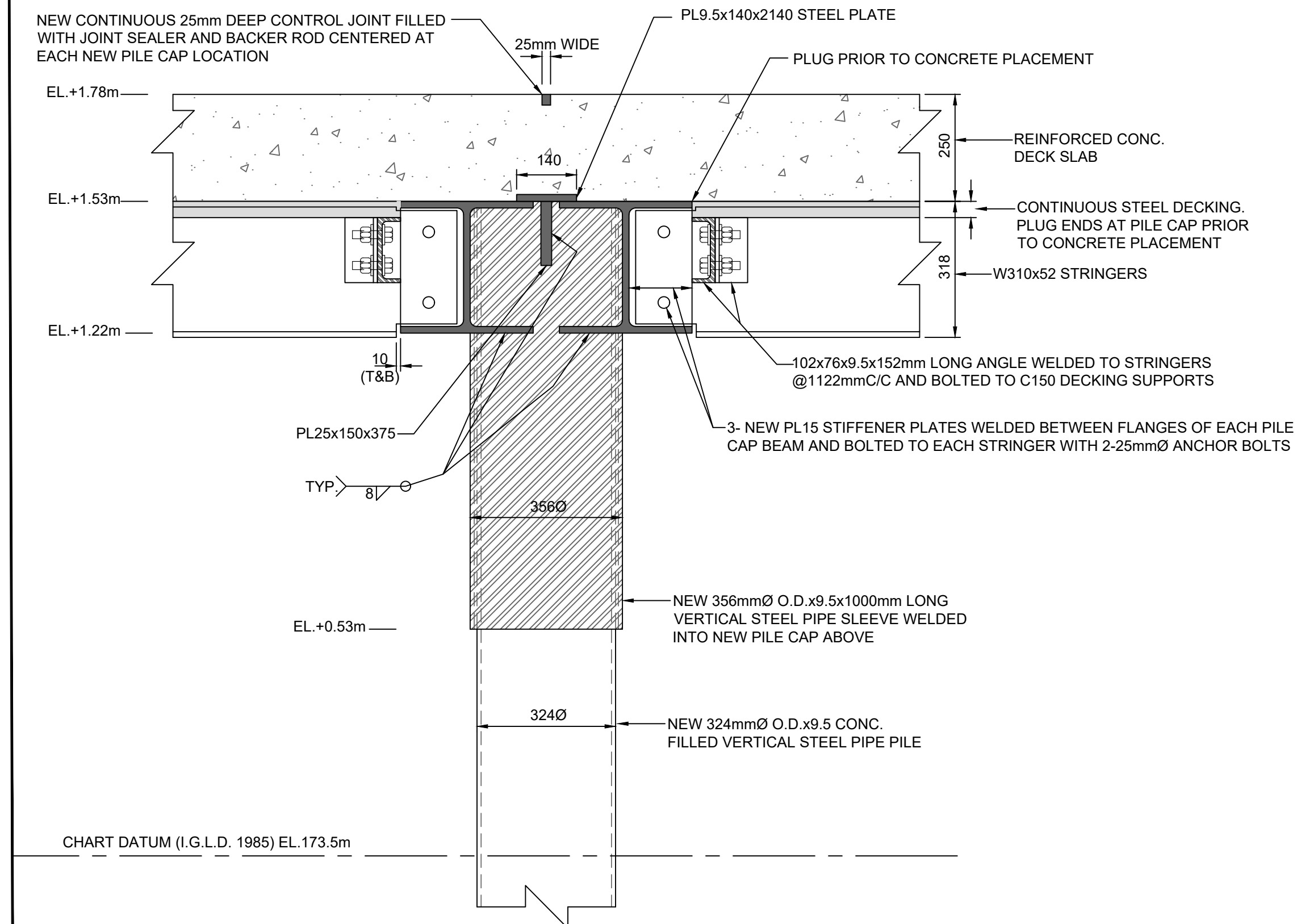




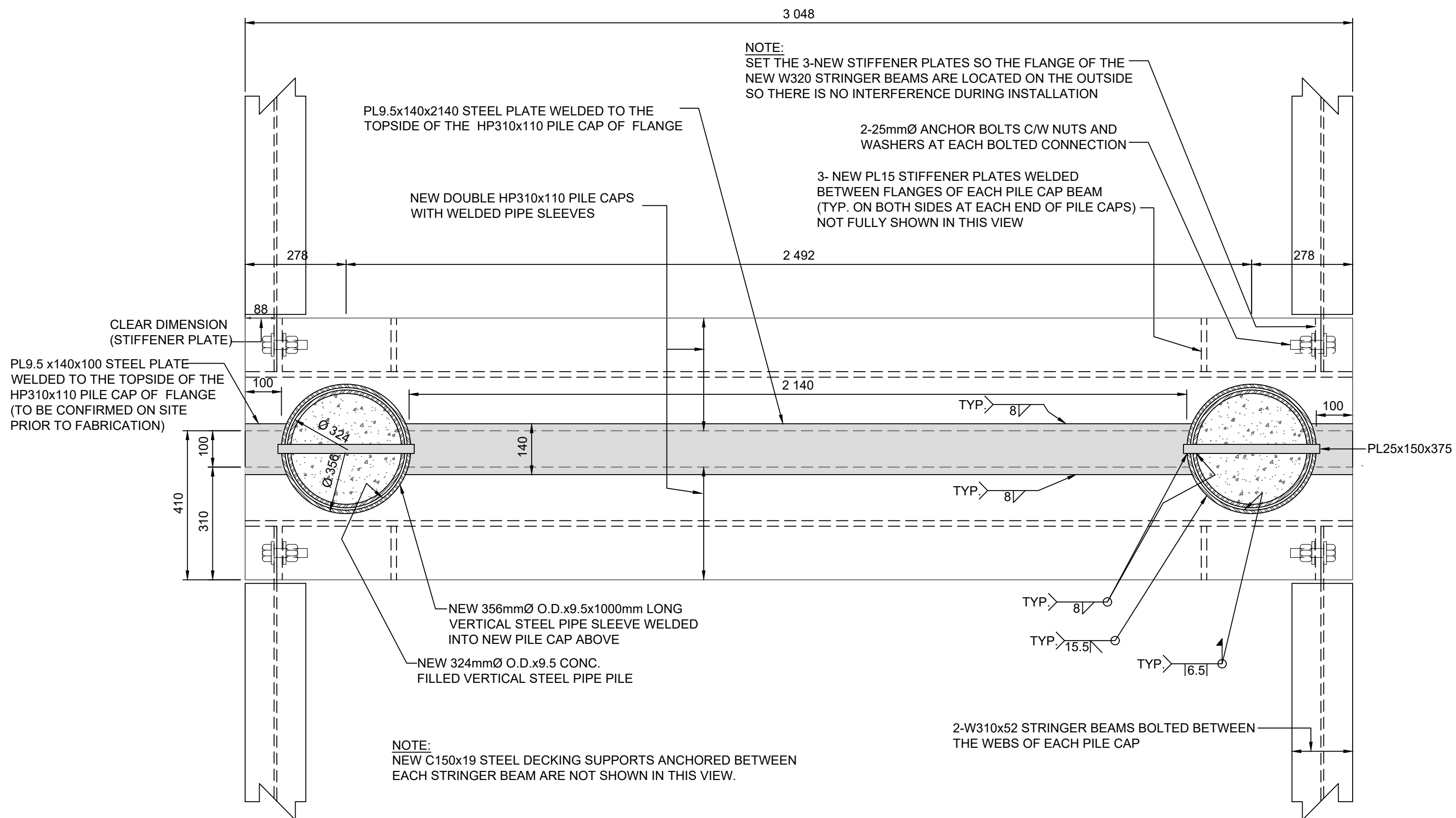
5
4/7
TYP. SIDE ELEVATION OF NEW CONC. SLAB ON JETTY #5
SCALE: 1:75



12
7/7
TYP. NEW JETTY FRAMING LAYOUT PLAN JETTY #5
SCALE: 1:75



16
7/7
TYP. SECTION OF NEW JETTY #5 AT PILE CAP LOCATIONS
SCALE: 1:10



13
7/7
TYP. PLAN OF NEW PILE CAP AT JETTY #5
SCALE: 1:10

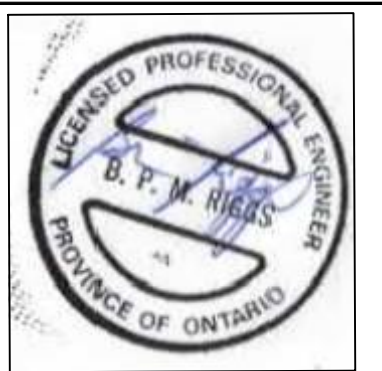
SMALL CRAFT HARBOURS
CENTRAL AND ARCTIC REGION



Riggs Engineering Ltd.
1240 Commissioners Rd. W., Suite 205
London, Ontario,
N6K 1C7
Tel: (519) 657-1040
Fax: (519) 657 8631
Website: www.riggsengineering.com

- 1 Detail No.
2 drawing no. - where detail required refers to MA-
3 drawing no. - where detailed refers to MA-

Stamp:



NOTES:

REVISIONS:	DATE:

SCALE:	CLASS:
AS NOTED	

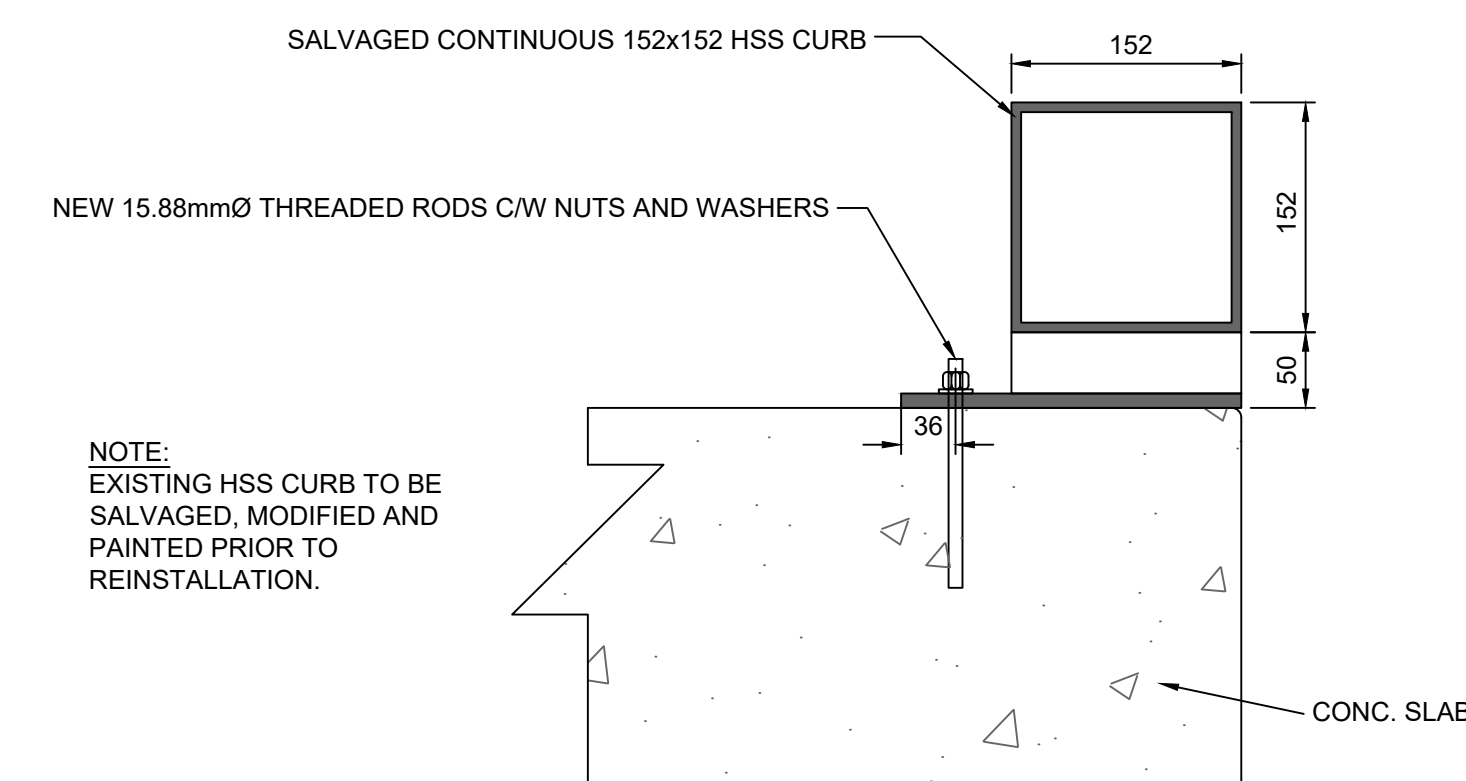
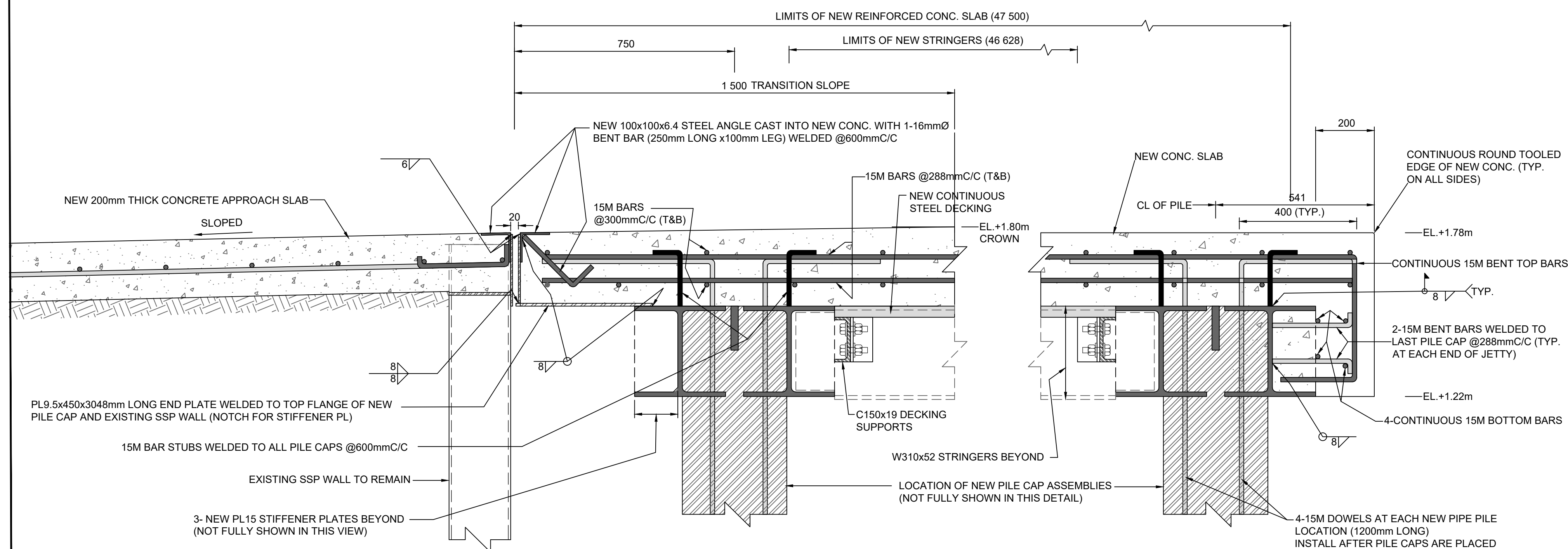
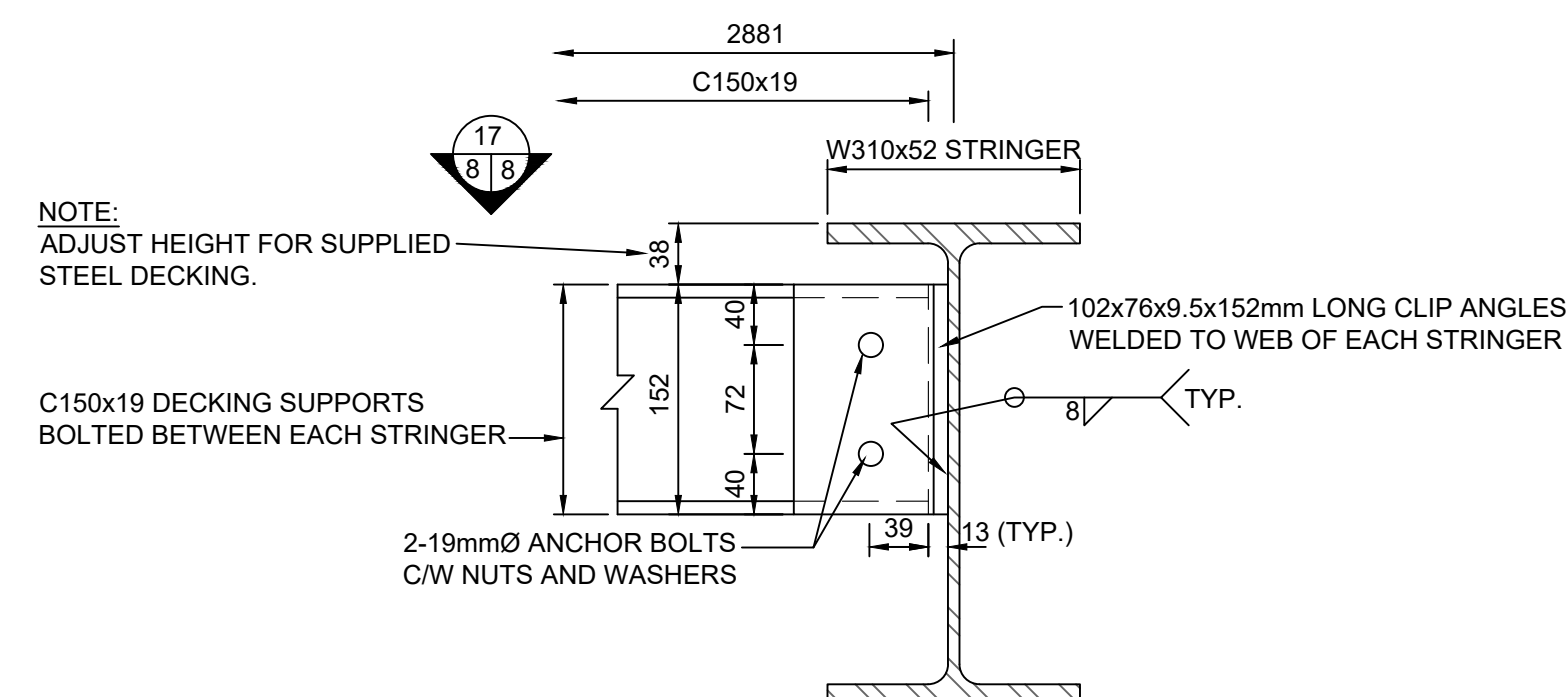
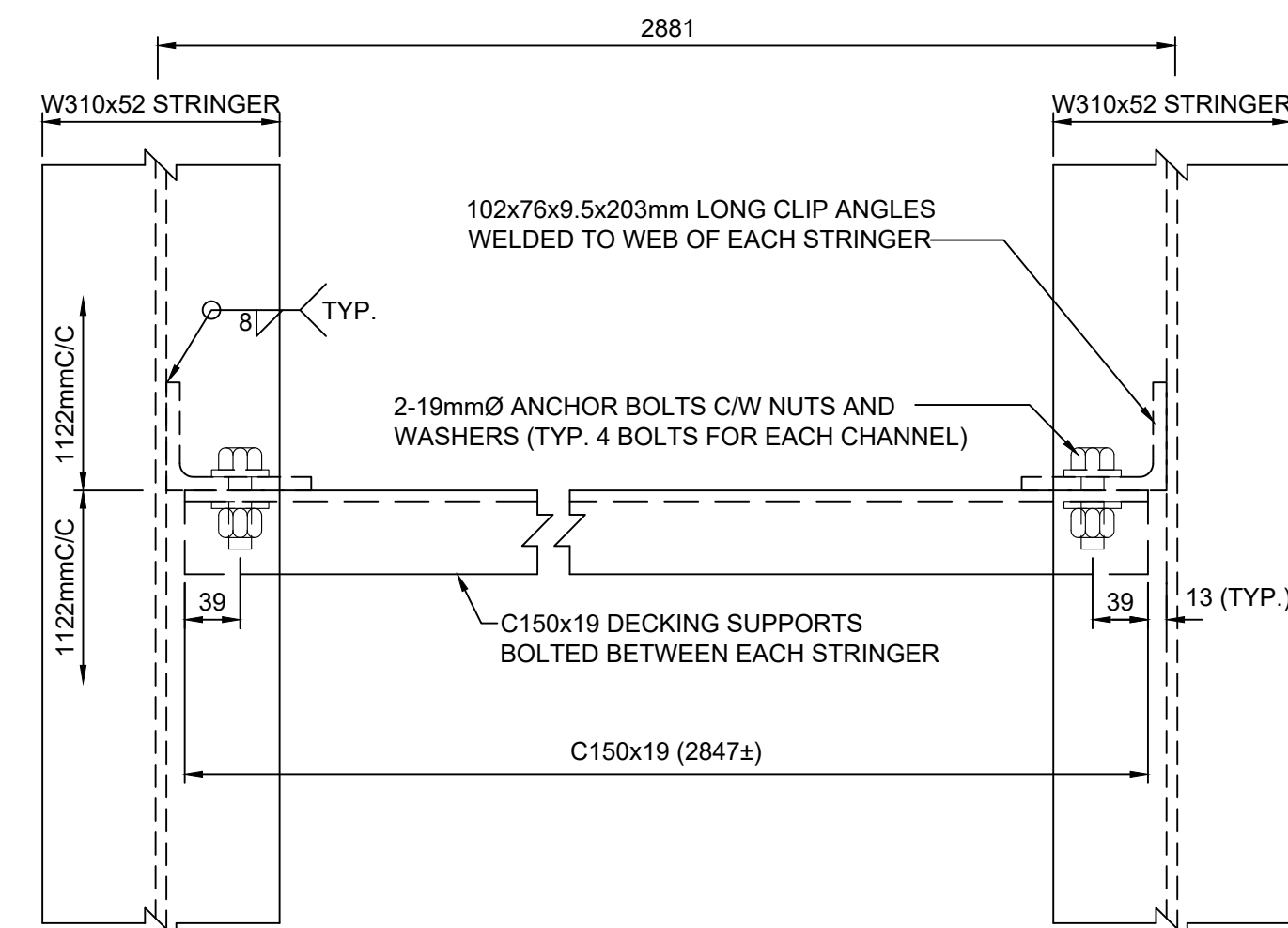
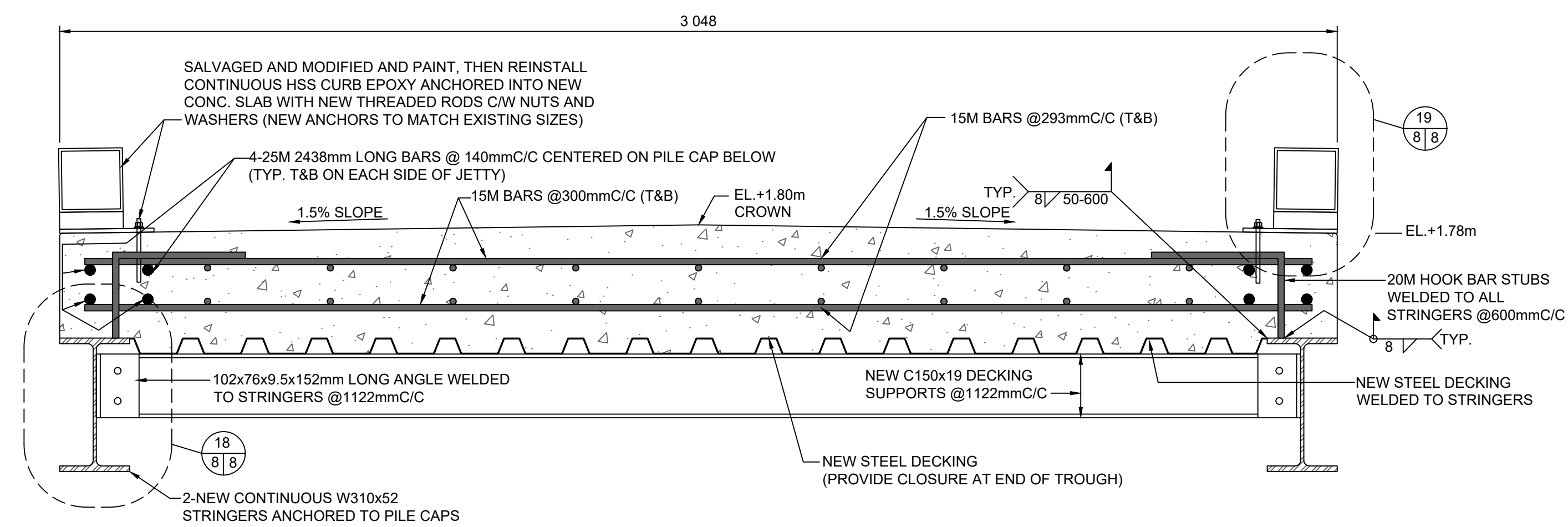
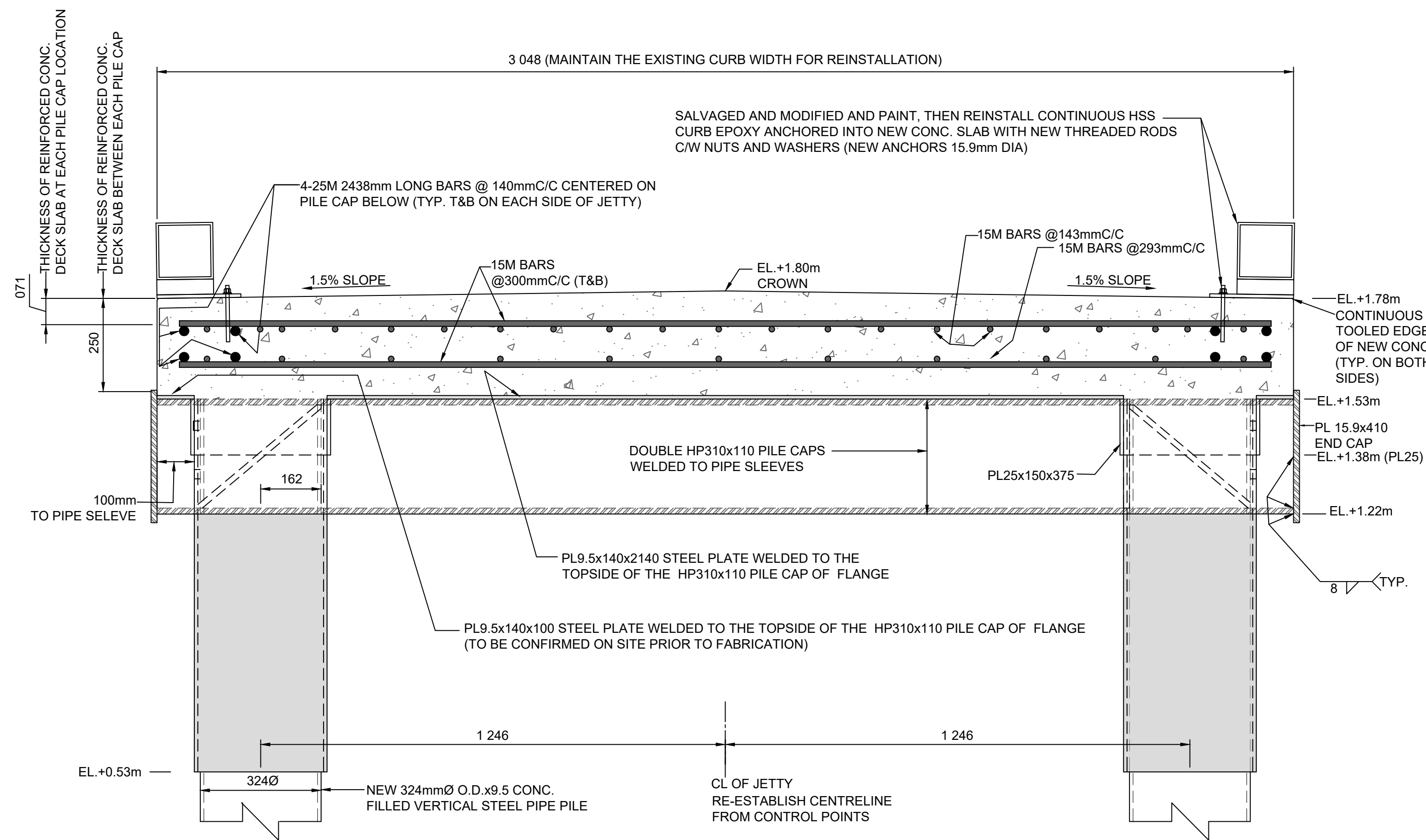
PROJECT:
2020 FISHERMAN'S BASIN JETTY #5 REHABILITATION

DESCRIPTION:
TYP. DETAILS FOR JETTY #5

DRAWN:	APPROVED:
SV	BR
DATE:	DATE:
2020-10-19	2020-10-19

LOCATION:
RONDEAU (ERIEAU) ONTARIO


DRAWING NO.:	LOCATOR CODE:
MA-07	723269



SMALL CRAFT HARBOURS CENTRAL AND ARCTIC REGION



Riggs Engineering Ltd.
1240 Commissioners Rd. W, Suite 205
London, Ontario,
N6K 1C7
Tel: (519) 657-1040
Fax: (519) 657 8631
Website: www.riggsengineering.com

- | | | |
|---|---|---|
|  | 1 | Detail No. |
| | 2 | drawing no. — where detail required refers to MA— |
| | 3 | drawing no. — where detailed refers to MA— |



REVISIONS:		DATE:

SCALE:		CLASS:	
AS NOTED			

PROJECT:

2020 FISHERMAN'S BASIN
JETTY #5 REHABILITATION

DESCRIPTION:

TYP. DETAILS FOR
JETTY #5


DRAWN: SV	APPROVED: BR
DATE: 2020-10-19	DATE: 2020-10-19

LOCATION:

RONDEAU (ERIEAU)
ONTARIO

DRAWING NO.:	LOCATOR CODE:
MA-08	723269



	1 Detail No.
	2 drawing no. — where detail required refers to MA—
	3 drawing no. — where detailed refers to MA—



NOTES:

REVISIONS:		DATE:

SCALE:	CLASS:
AS NOTED	

PROJECT:

2020 FISHERMAN'S BASIN
JETTY #5 REHABILITATION

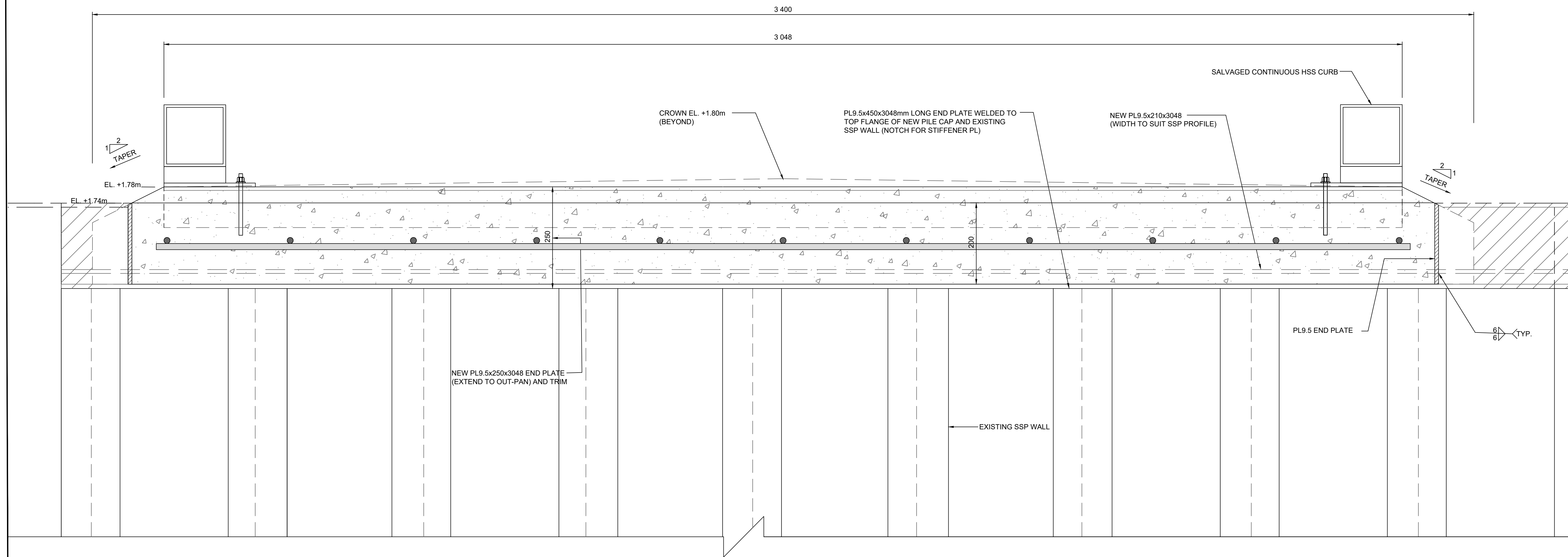
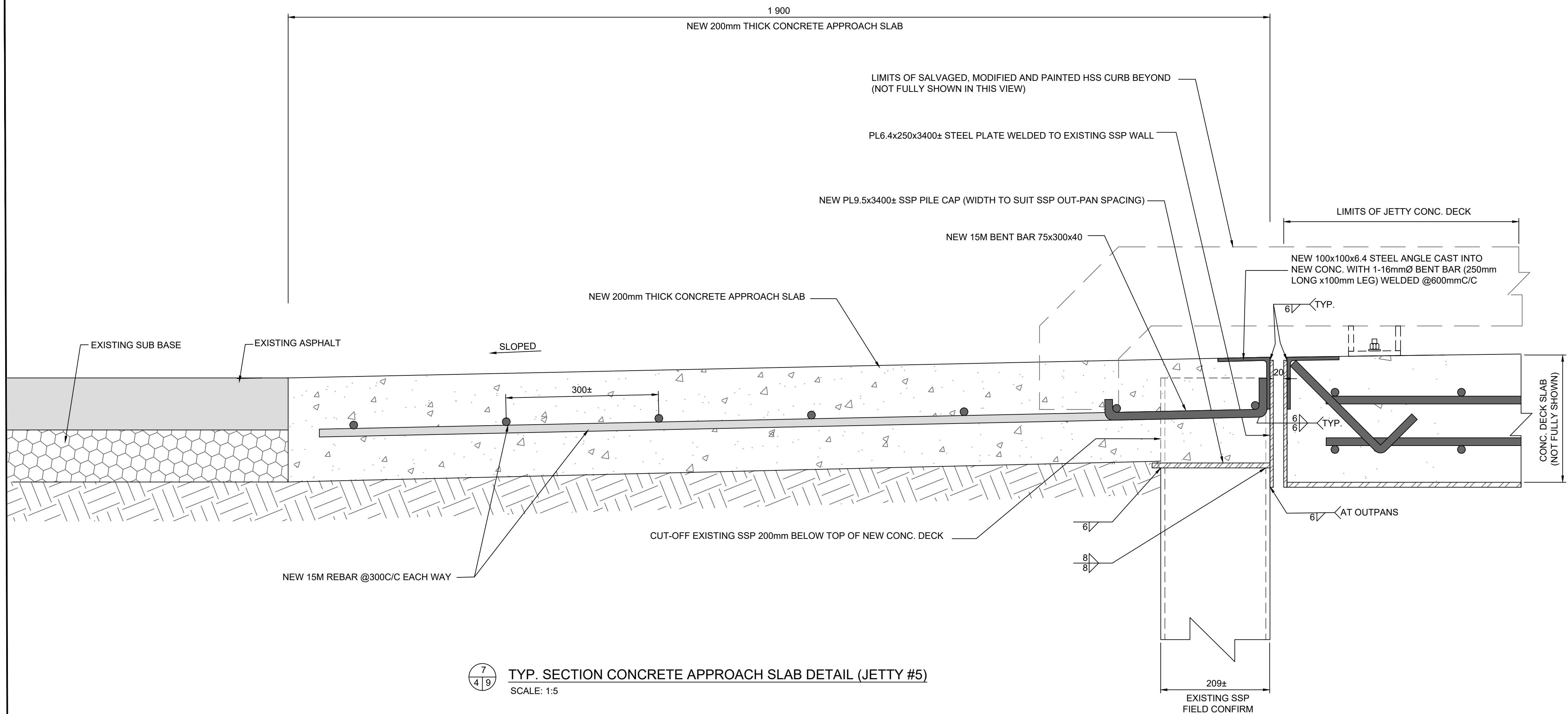
DESCRIPTION:

TYP. CONCRETE
APPROACH RAMP DETAILS

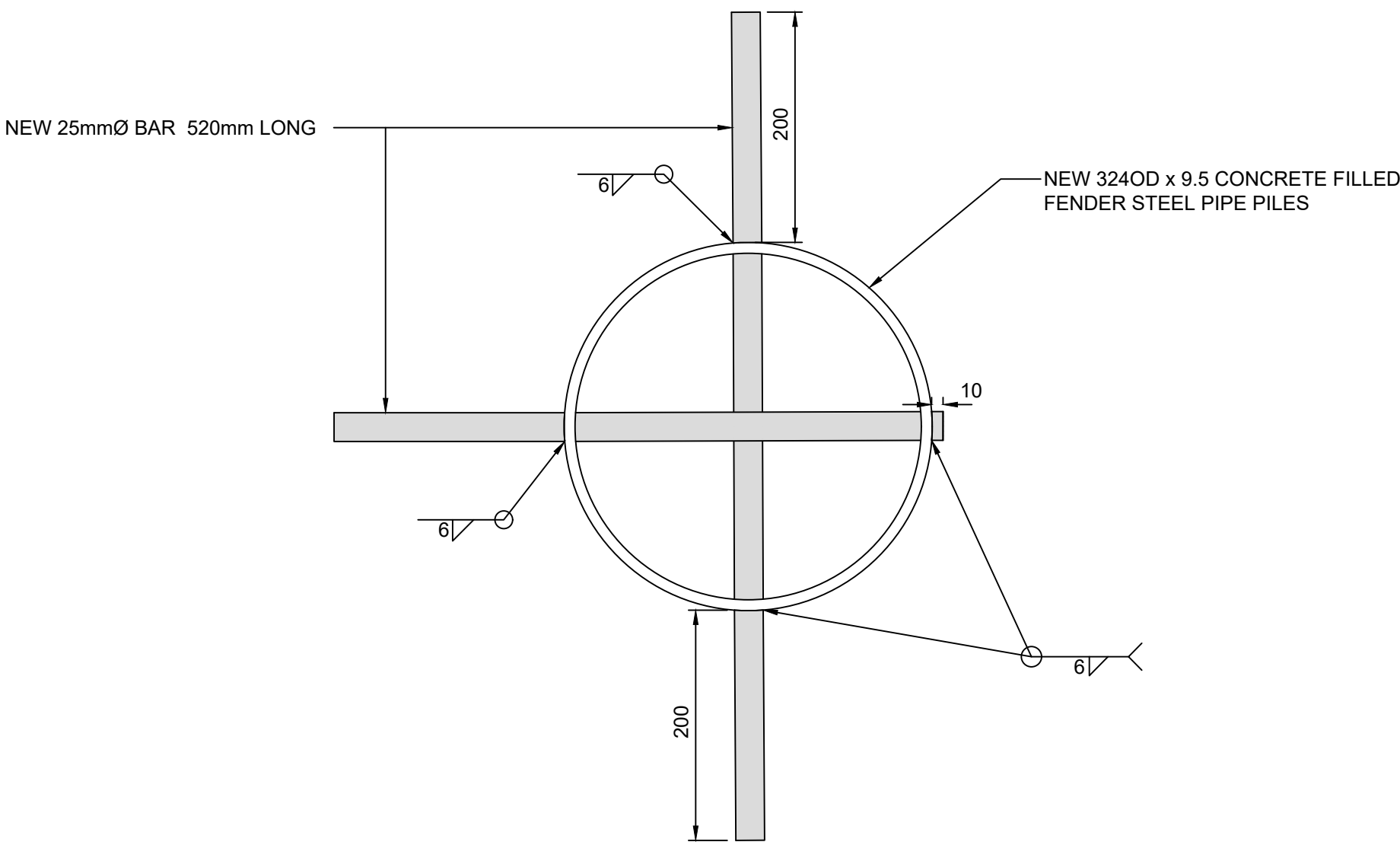
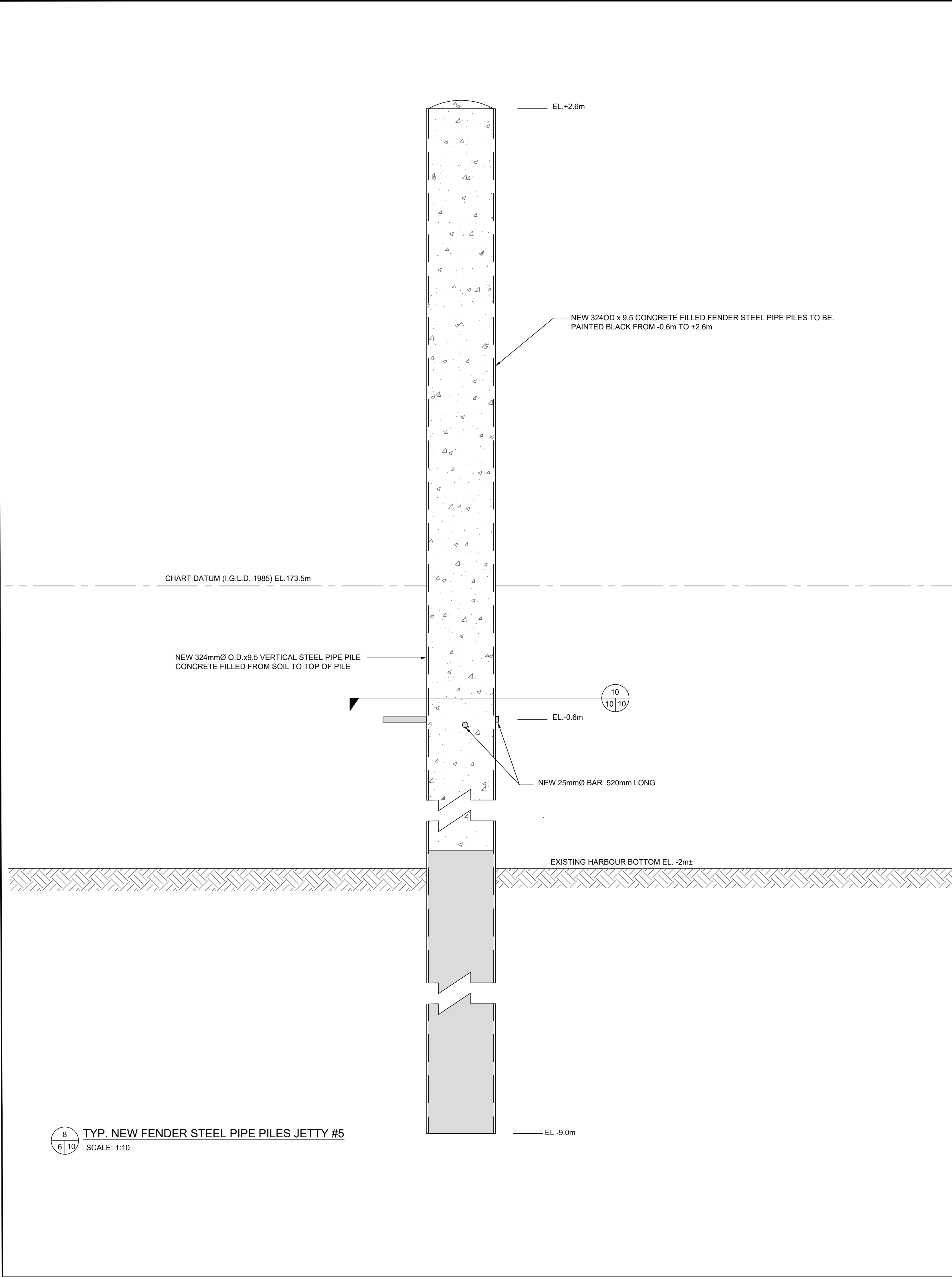
DRAWN: SV	APPROVED: BR
DATE: 2020-10-19	DATE: 2020-10-19

LOCATION: RONDEAU (ERIEAU)
ONTARIO

DRAWING NO.:	LOCATOR CODE:
MA-09	723269



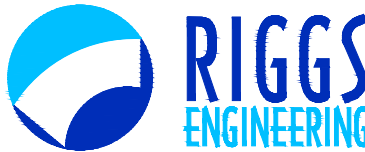
CONCRETE APPROACH SLAB ELEVATION VIEW (JETTY #5)
 SCALE: 1:5



10
10 10
TYP. NEW PIN DETAILS
SCALE: 1:5

8
6 10
TYP. NEW FENDER STEEL PIPE PILES JETTY #5
SCALE: 1:10

SMALL CRAFT HARBOURS
CENTRAL AND ARCTIC REGION



Riggs Engineering Ltd.
1240 Commissioners Rd. W., Suite 205
London, Ontario,
N6K 1C7
Tel: (519) 657-1040
Fax: (519) 657 8631
Website: www.riggsengineering.com

- 1 Detail No.
2 drawing no. - where detail required
3 drawing no. - where detailed
refers to MA-
refers to MA-

Stamp:



NOTES:

REVISIONS:	DATE:

SCALE:	CLASS:
AS NOTED	

PROJECT:

2020 FISHERMAN'S BASIN
JETTY #5 REHABILITATION

DESCRIPTION:

NEW STEEL FENDER
PIPE PILE DETAILS

DRAWN:	APPROVED:
SV	BR
DATE:	DATE:
2020-10-19	2020-10-19

LOCATION:

RONDEAU (ERIEAU)
ONTARIO

DRAWING NO.:	LOCATOR CODE:
MA-10	723269