

ROOM SCHEDULE	DESCRIPTION
1.01	VESTIBULE
1.02	SUPERVISOR
1.03	MAP ROOM
1.04	CORRIDOR
1.05	GENERAL OFFICE
1.06A	OFFICE STORAGE
1.06B	WOMEN'S LOCKERS/SHOWERS
1.06A	WOMEN'S W.R.
1.07	MENS W.R.
1.08	MENS LOCKERS/SHOWERS
1.09	CORRIDOR
1.10	BASE MANAGER
1.11	LUNCH/CONFERENCE RM.
1.12	SEARCH/RESCUE
1.13	ELECTRICAL WORKSHOP
1.14	TECHNICIAN'S OFFICE
1.15	CORRIDOR
1.16	CORRIDOR
1.17	SHIP'S STORAGE
1.18	SECURITY STORAGE
1.19	ELECTRICAL/MECHANICAL
1.20	CORRIDOR
1.21	BOAT MAINTENANCE
1.22	ENGINE WORKSHOP
1.23	ENGINE STORAGE
1.24	CORRIDOR
1.25	BATTERY STORAGE
1.26	HEATED STORAGE
1.27	ELECTRICAL ROOM

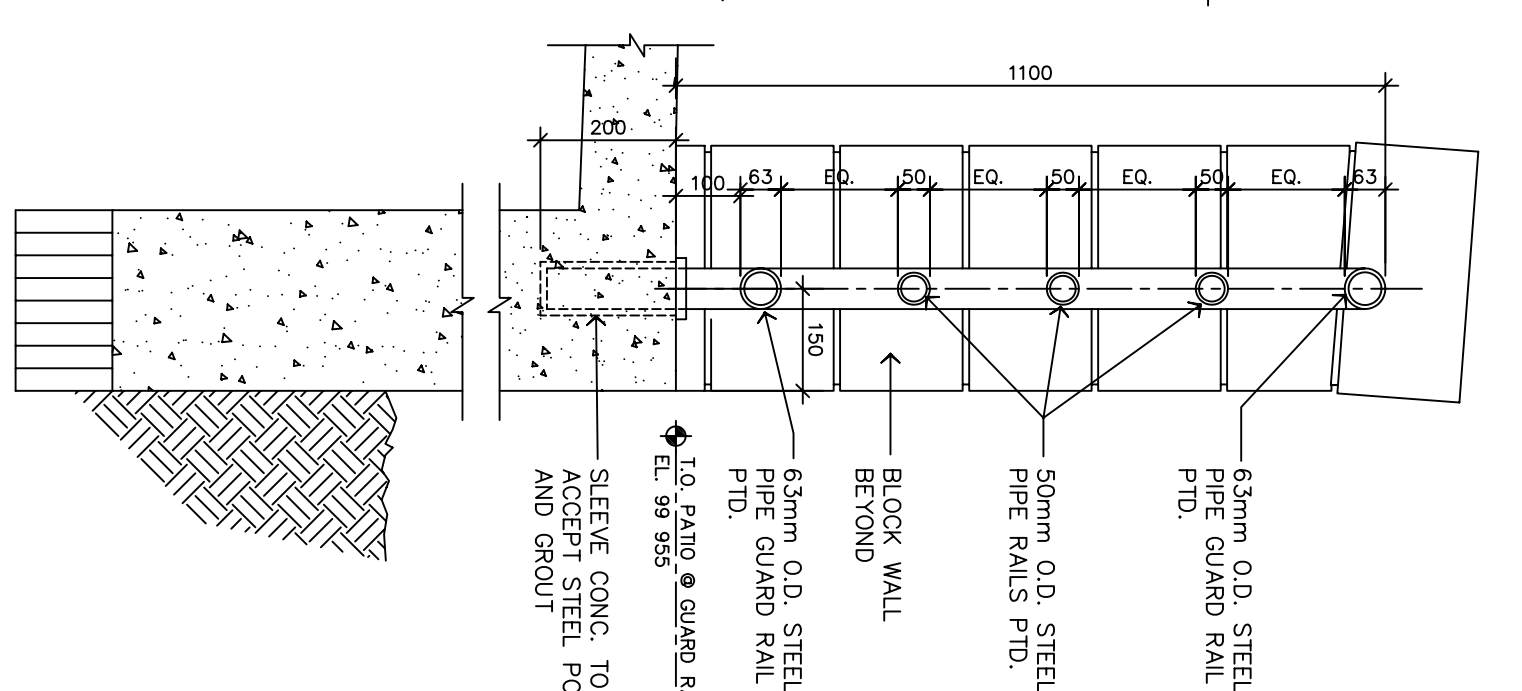
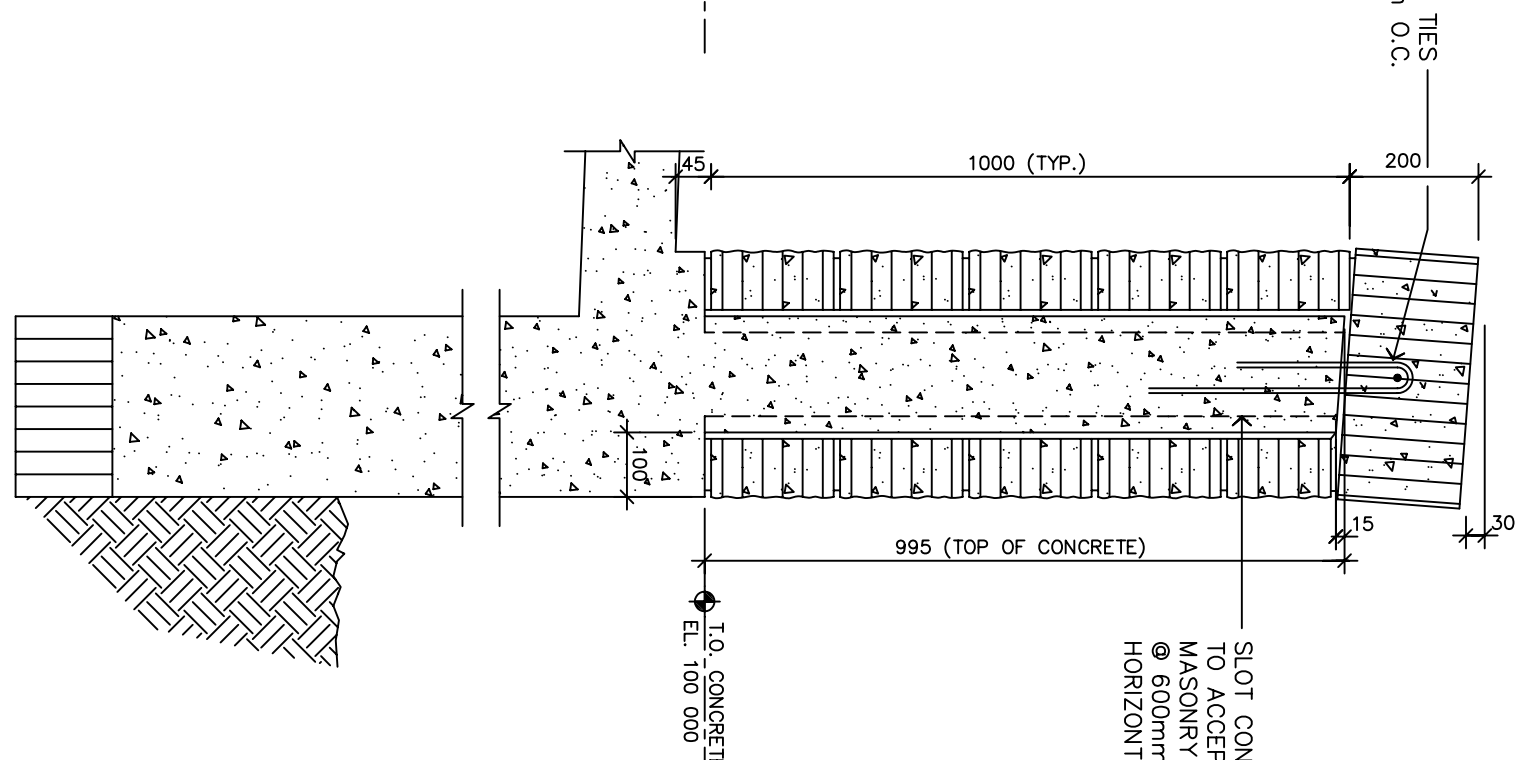
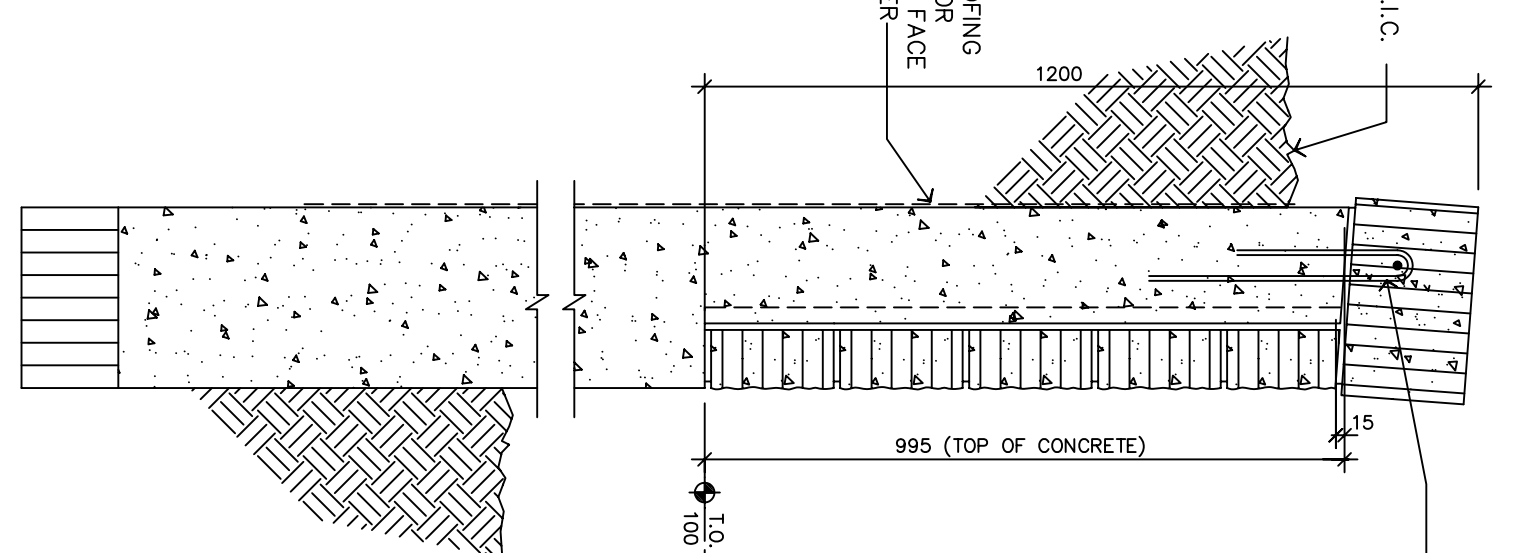
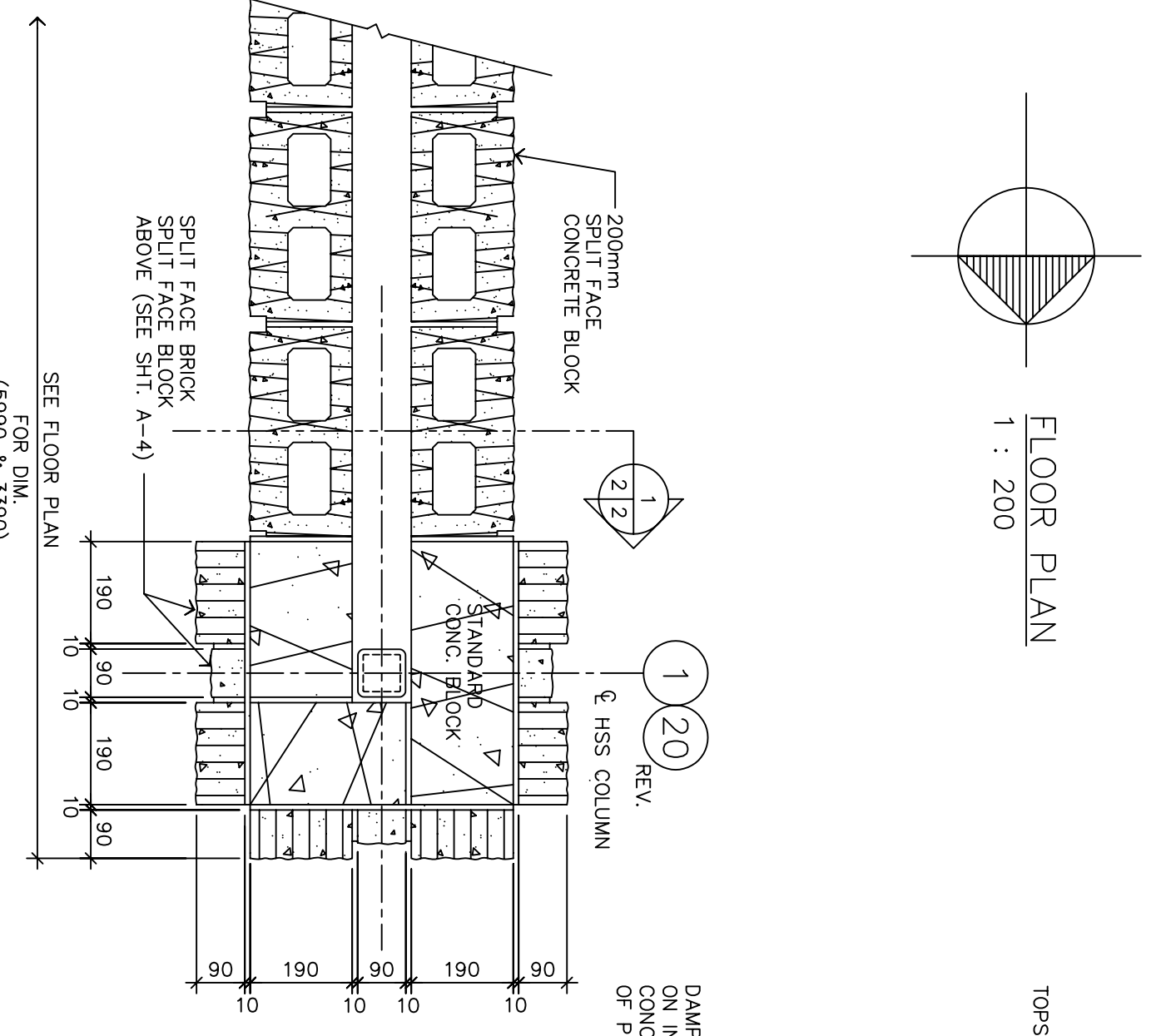
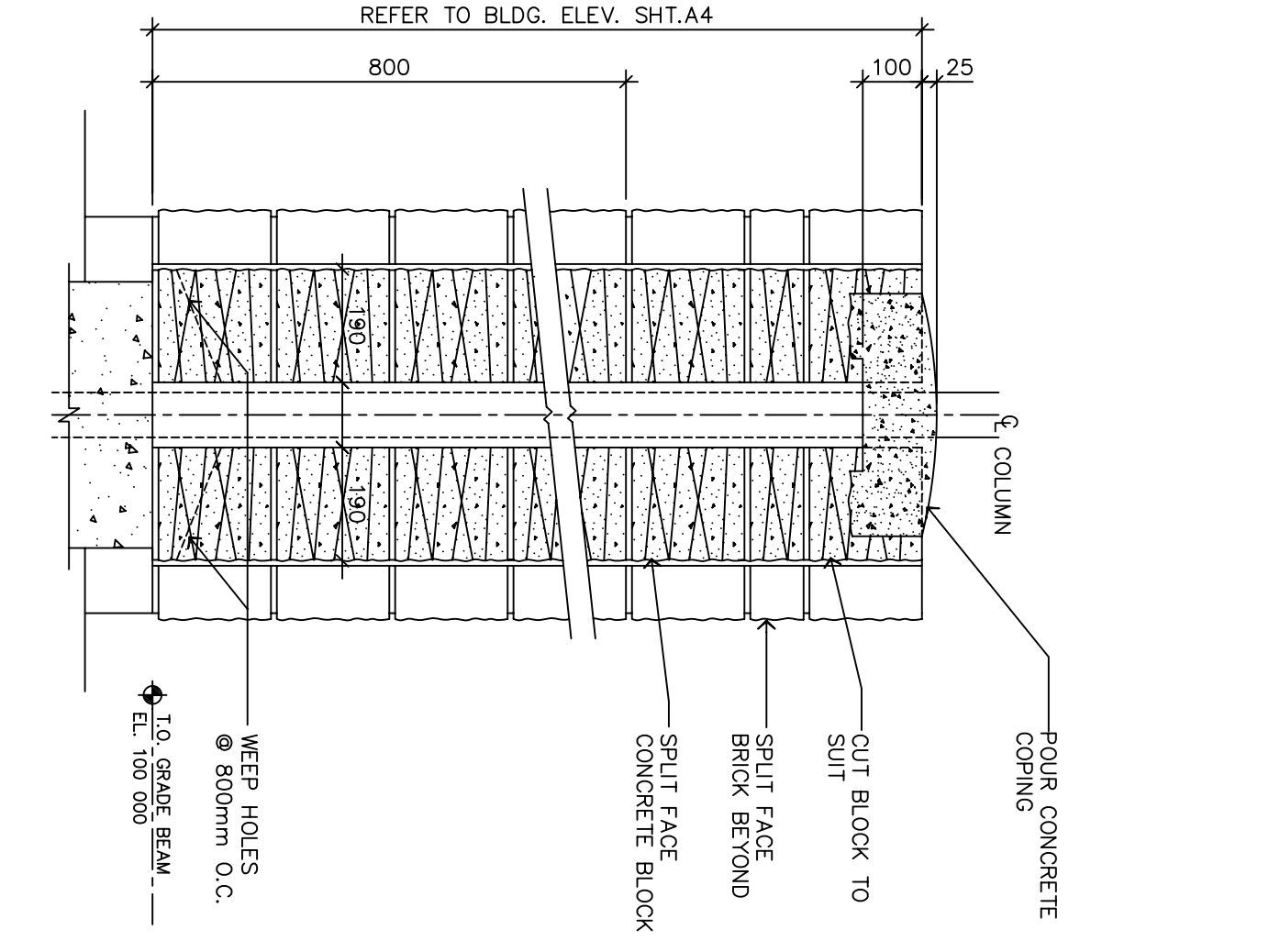
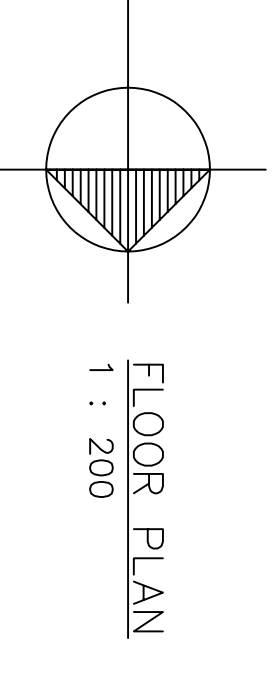
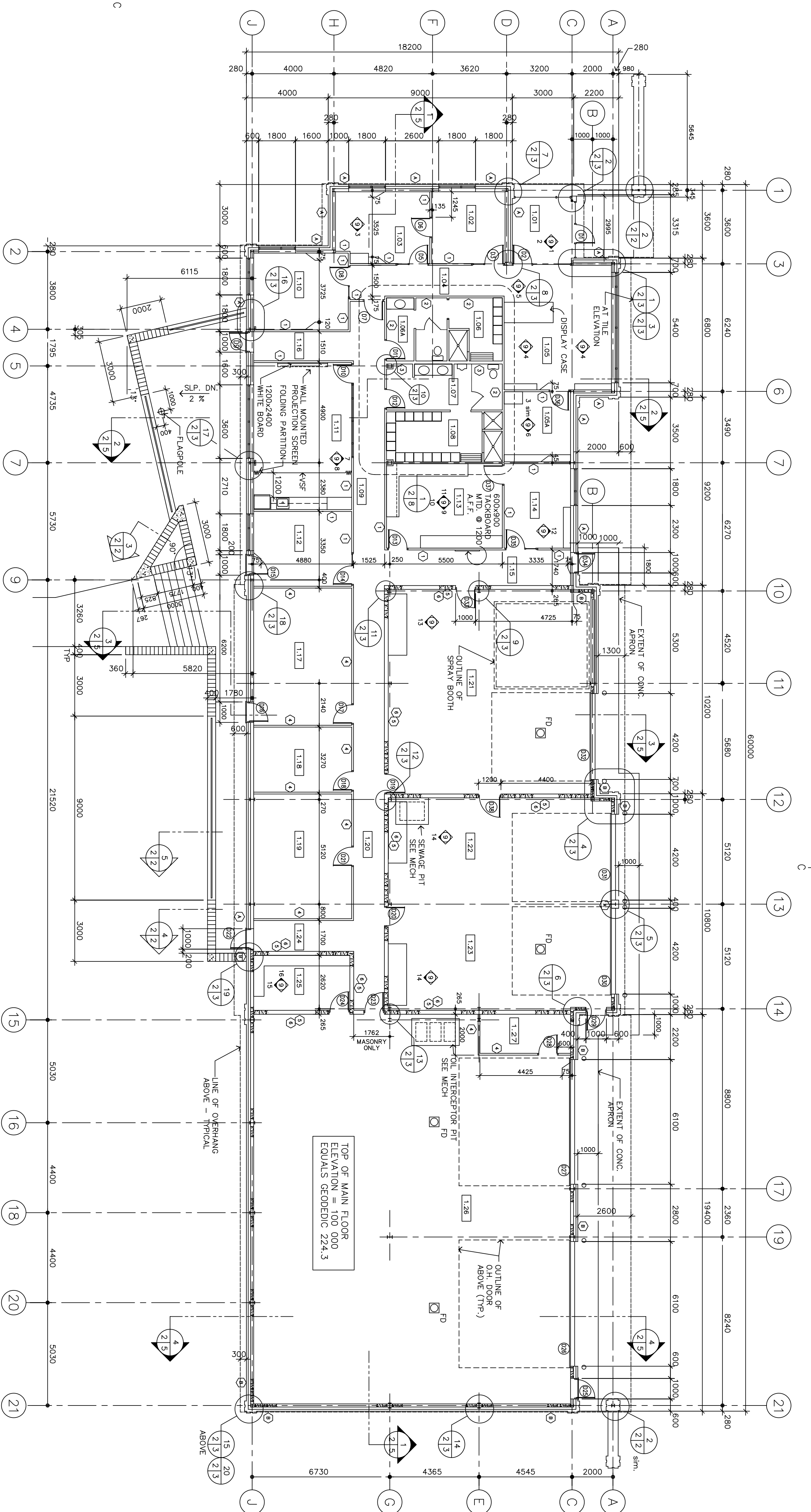
WALL TYPES

EXTERIOR WALLS

- 90 CONCRETE BLOCK VENEER (SEE SHT. 4 FOR TYPE & LOCATION)
- AIR SPACE
- 75 SPRAYED FOAM INSULATION
- 150mm STEEL STUDS @ 400 O.C.
- 16mm GYPSUM BOARD

INTERIOR WALLS

- 90 CONCRETE BLOCK VENEER
- 75 SPRAYED FOAM INSULATION
- 150 T.W. CONC. BLOCK TO 3000 A.F.F. UNLESS OTHERWISE NOTED



WALL CONSTRUCTION NOTES:

- ALL FIRE RATED PARTITIONS TO EXTEND U/S OF ROOF DECK
- ALL PENETRATIONS THROUGH FIRE SEPARATIONS TO BE FIRESTOPPED TO MAINTAIN THE INTEGRITY OF THE FIRE SEPARATION.

revision	description	date
A	As noted	
B	Revised	
C	As noted	

Project		Client	
SELKIRK, MANITOBA	NOVEMBER 1992	WPG.	NOVEMBER 1992
CANADIAN COAST		K.NEILL	
GUARD BASE			

drawing	design
FLOOR PLAN	

date	approved	date	approved
	K.NEILL		

Tender	Submission
781359	781359