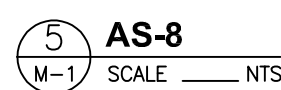
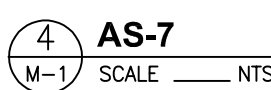
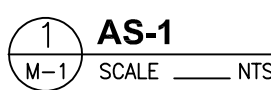


TAG	DESCRIPTION	AIRFLOW (L/s)	ESP Pa	RPM	ELECTRICAL			FIRE ALARM SHUTDOWN	TEMP RISE °C	GAS INPUT kW	GAS OUTPUT kW	REMARKS
					kW	VOLTS	PHASE					
AS-1	AIR HANDLING UNIT – WOOD SHOP	7,146	124	1750	7.5	600	3ø	X	36.7	380	308	INDOOR SUPPLY AIR HANDLING UNIT SUSPENDED FROM STRUCTURE C/W REAR INLET, BOTTOM RETURN, MOTORIZED INLET DAMPERS, AND FINAL FILTERS. ACCESS FROM LHS (WHEN SITTING ON THE UNIT FACING THE SAME DIRECTION AS THE AIRFLOW). UNIT SHALL BE ALL ALUMINUM CONSTRUCTION. MAX UNIT WEIGHT: 1250 kg.
AS-2	AIR HANDLING UNIT – METAL SHOP	5,282	186	1750	5.6	600	3ø	X	50	380	308	INDOOR SUPPLY AIR HANDLING UNIT SUSPENDED FROM STRUCTURE C/W REAR INLET, BOTTOM RETURN, MOTORIZED INLET DAMPERS, AND FINAL FILTERS. ACCESS FROM RHS (WHEN SITTING ON THE UNIT FACING THE SAME DIRECTION AS THE AIRFLOW). UNIT SHALL BE ALL ALUMINUM CONSTRUCTION. MAX UNIT WEIGHT: 1205 kg.
AS-6	AIR HANDLING UNIT – CENTRAL STORES	3,139	186	1750	5.6	600	3ø	X	36	161	130	INDOOR SUPPLY AIR HANDLING UNIT SUSPENDED FROM STRUCTURE C/W REAR INLET, BOTTOM RETURN, MOTORIZED INLET DAMPERS, AND FINAL FILTERS. ACCESS FROM RHS (WHEN SITTING ON THE UNIT FACING THE SAME DIRECTION AS THE AIRFLOW). UNIT SHALL BE ALL ALUMINUM CONSTRUCTION. MAX UNIT WEIGHT: 710 kg.
AS-7	AIR HANDLING UNIT – PAINT SHOP	3,908	124	1750	5.6	600	3ø	X	24	132	107	INDOOR SUPPLY AIR HANDLING UNIT SUSPENDED FROM STRUCTURE C/W REAR INLET, BOTTOM RETURN, MOTORIZED INLET DAMPERS, AND FINAL FILTERS. ACCESS FROM RHS (WHEN SITTING ON THE UNIT FACING THE SAME DIRECTION AS THE AIRFLOW). UNIT SHALL BE ALL ALUMINUM CONSTRUCTION. MAX UNIT WEIGHT: 710 kg.
AS-8	AIR HANDLING UNIT – COMBINED UNIT	8,020	186	1750	11.2	600	3ø	X	37	410	332	OUTDOOR SUPPLY AIR HANDLING UNIT MOUNTED ON NEW CONCRETE PAD C/W REAR INLET, TOP RETURN, MOTORIZED INLET DAMPERS, AND FINAL FILTERS. ACCESS FROM RHS (WHEN SITTING ON THE UNIT FACING THE SAME DIRECTION AS THE AIRFLOW).
MAU-1	MAKE-UP AIR UNIT – PAINT SHOP	14,160	124	1750	11.2	600	3ø	X	66.6	1159	940	INDOOR MAKE-UP AIR UNIT SUSPENDED FROM STRUCTURE C/W REAR INLET, MOTORIZED INLET DAMPERS, AND FINAL FILTERS. ACCESS FROM LHS (WHEN SITTING ON THE UNIT FACING THE SAME DIRECTION AS THE AIRFLOW). UNIT SHALL BE ALL ALUMINUM CONSTRUCTION. MAX UNIT WEIGHT: 1370 kg.



Client	client
<b>PSPC</b>	

**PSPC**

**Bowden Institution**  
**Bowden, Alberta**

**Bowden Institution**  
**Bowden, Alberta**

**CSC BOWDEN  
CORCAN A28  
AHU REPLACEMENT**

AF

Drawn by	Dessiné par
----------	-------------

AF

PWGSC Project Manager	Administrateur de Projets TPSGC
-----------------------	---------------------------------

\_\_\_\_\_

## Mechanical Schedules and Unit Details

--	--	--	--

672201

**M1**  
OF 1

## O