



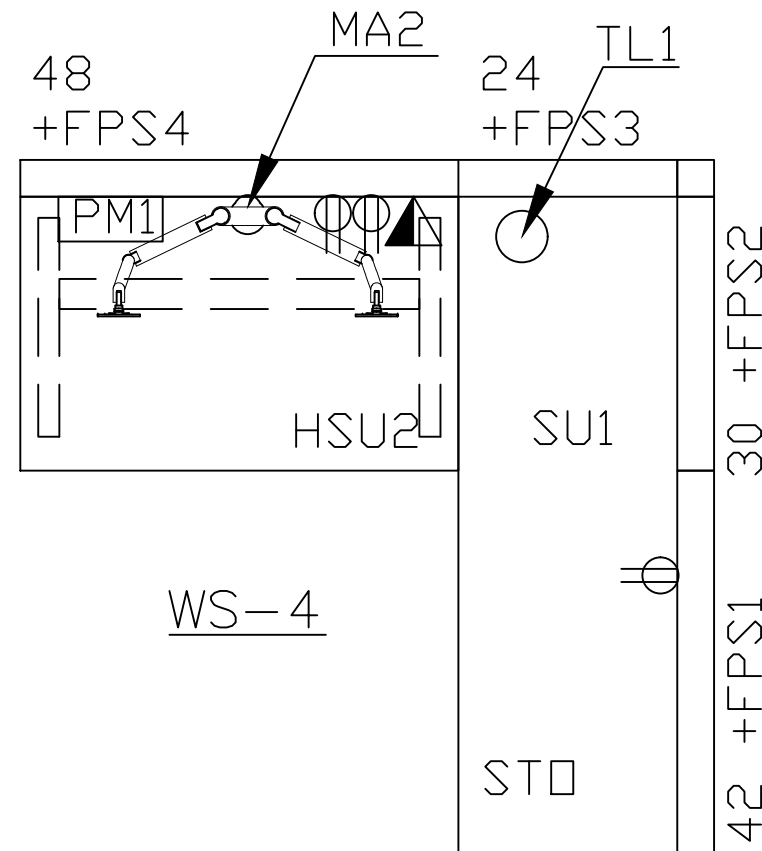
WS-4 TYPICAL WORKSTATION

CATEGORY |A

REFER TO FLOOR PLANS.

POWER OUTLET BELOW WORK SURFACE

LAN & DATA OUTLETS AS PER THIS TYPICAL WS-4



WS-4

8' Power Poles

CATEGORY |B

SU1 1829 (72") X 610 (24") WORK SURFACE, PANEL MOUNTED, HIGH PRESSURE LAMINATE, RECTANGULAR

FPSI 1067 (42") PRIVACY SCREEN, PANEL MOUNTED, FROSTED GLASS

FPS2 762 (30") PRIVACY SCREEN, PANEL MOUNTED, FROSTED GLASS

FPS3 610 (24") PRIVACY SCREEN, PANEL MOUNTED, FROSTED GLASS

FPS4 1219 (48") PRIVACY SCREEN, PANEL MOUNTED, FROSTED GLASS

CATEGORY 2

HSU 2 1219 (48) X 762 (30) HEIGHT ADJUSTABLE WORK SURFACE, HIGH PRESSURE LAMINATE, ELECTRICALLY ASSISTED

CATEGORY 5

MA2 MONITOR ARM, DUAL MONITOR, CLAMP MOUNT

PM1 DESK TOP POWER MODULE

TL1 TASK LIGHT, DESK BASE

STO UNDER SURFACE MOUNTED HOOK

		Location		9 MONTCLAIR HUB - 2ND FLOOR - WS-4 TYPICAL WORKSTATION		Approval:		Date:	
								2020-12-15	
		Project Name		9 MONTCLAIR HUB - 2ND FLOOR - GATINEAU - QUEBEC		Drawn by:		Scale:	
						Louise Durivage		NTS	
No.	Description	Date							Page:
									1/1