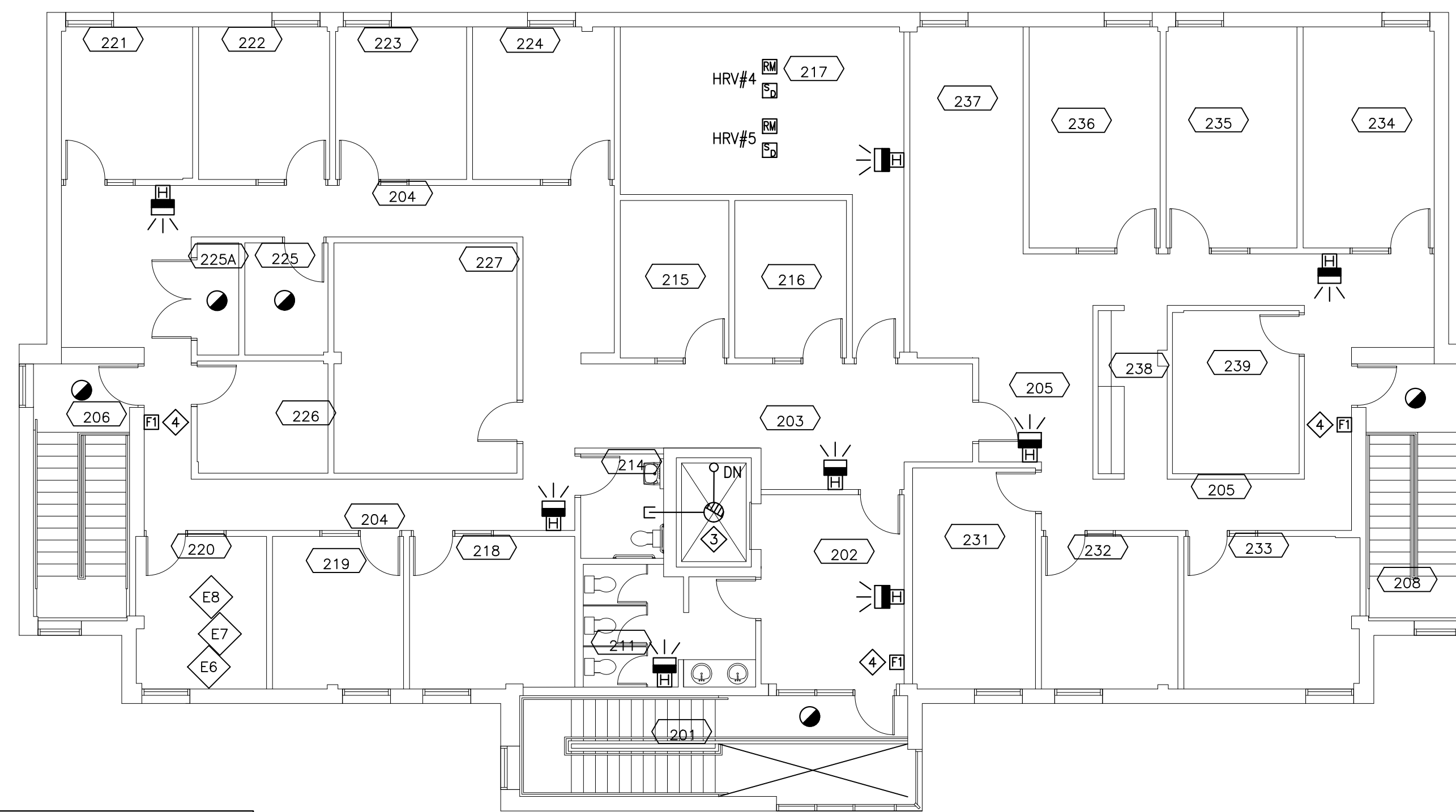


FIRST FLOOR

SCALE: 1:100

0m 5m 10m 15m



SECOND FLOOR

SCALE: 1:100

0m 5m 10m 15m

GENERAL NOTE:

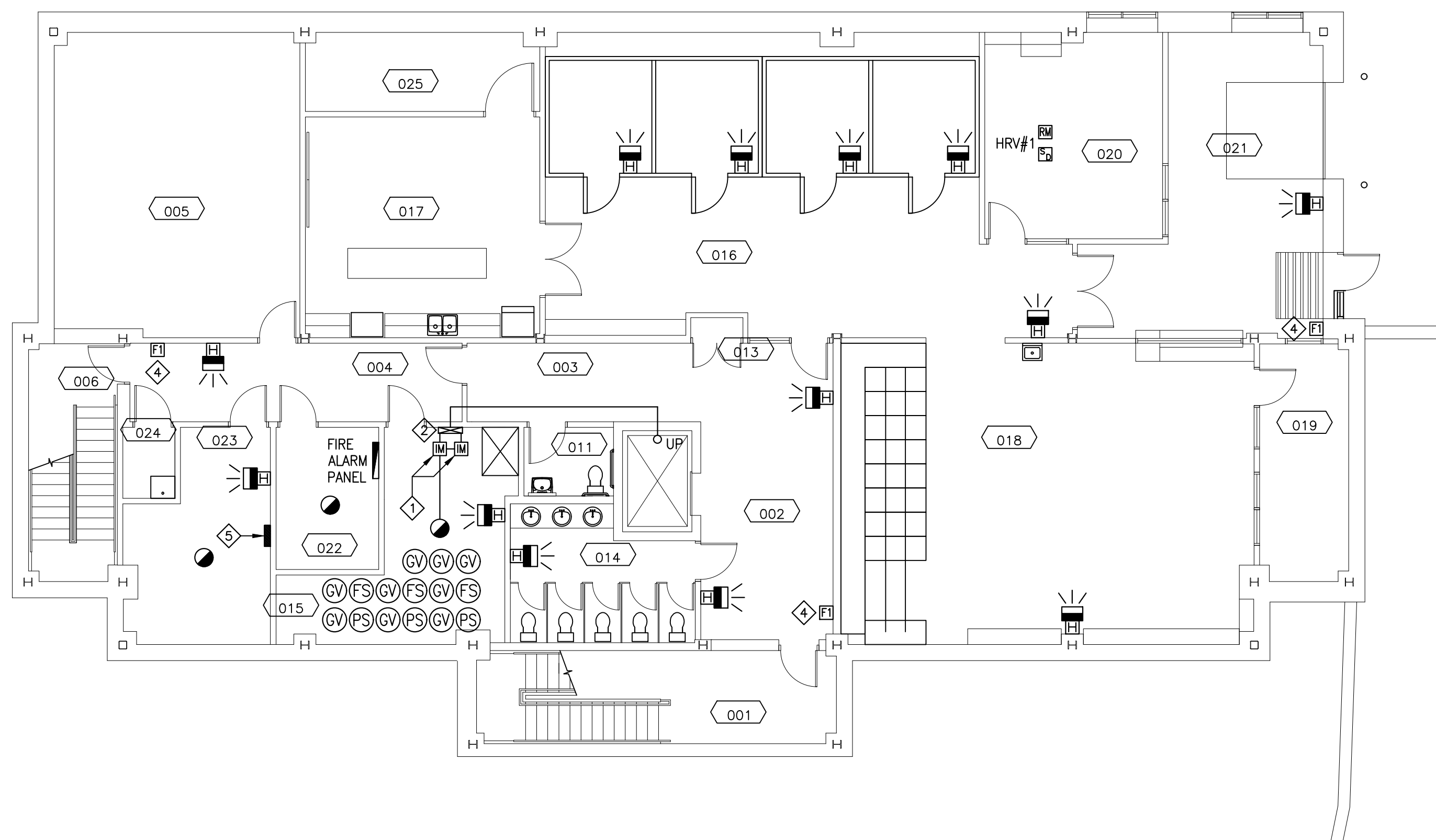
EXISTING SIEMENS FIRE ALARM SYSTEM SHALL BE MAINTAINED IF THE REPLACEMENT FIRE ALARM SYSTEM THROUGHOUT THE CAMPUS IS BY EXISTING MANUFACTURER, OTHERWISE A NEW ADDRESSABLE FIRE ALARM SYSTEM SHALL BE PROVIDED TO REPLACE ALL COMPONENTS FOR THIS BUILDING. ALL BUILDINGS ON THE CAMPUS SHALL BE EQUIPPED WITH A FIRE ALARM SYSTEM FROM A SINGLE MANUFACTURER.

IF THE EXISTING FIRE ALARM SYSTEM IN THIS BUILDING IS REPLACED (PER THE NOTE ABOVE) THE CONTROL PANEL AND ANNUNCIATOR AND ALL FIELD DEVICES SHALL BE TURNED OVER TO THE DEPARTMENTAL REPRESENTATIVE.

EXISTING SPRINKLER COMPONENTS ARE NOT TO BE MODIFIED, ONLY ADDRESSABLE MODULES ARE TO BE REPLACED UNLESS INDICATED OTHERWISE.

FIRE ALARM NOTES:

- 1 EXTEND EXISTING FIRE ALARM INITIATING CIRCUITRY TO NEW DEVICE.
- 2 ASPIRATING SMOKE DETECTOR CONTROL PANEL.
EXTEND 21mm AIR SAMPLING PIPING TO TOP OF ADJACENT ELEVATOR SHAFT.
FEED FROM SPARE 15A-1P CIRCUIT BREAKER IN EXISTING PANEL "P4".
- 3 EXISTING ELEVATOR SHAFT SMOKE DETECTOR TO BE REMOVED AND REPLACED WITH NEW SAMPLING POINT.
- 4 RELOCATE EXISTING MANUAL PULL STATION SUCH THAT IT IS 1100mm ABOVE THE FINISHED FLOOR. REPAIR WALL AND REPAIR WALL FINISH TO MATCH EXISTING FINISH.
- 5 CONNECT ASPIRATING SMOKE DETECTOR CONTROL PANEL TO SPARE 1-15A-1P CIRCUIT BREAKER IN EXISTING PANEL "P4" (EATON PRL1). PROVIDE CIRCUIT BREAKER LOCK.
CONFIRM EXACT LOCATION OF PANEL ON SITE.



GROUND FLOOR

SCALE: 1:100

0m 5m 10m 15m

GROUND FLOOR LEGEND

- 001 - MAIN STAIR
- 002 - LOBBY
- 003 - CORRIDOR
- 004 - CORRIDOR
- 005 - UNASSIGNED
- 006 - EXIT STAIR A
- 011 - BF STAFF WASHROOM
- 013 - ELEVATOR CONTROL CLOSET
- 014 - INMATE WASHROOM
- 015 - MECHANICAL ROOM
- 016 - BULK STORAGE
- 017 - TRAINING KITCHEN
- 018 - ORDER PROCESSING
- 019 - FOOD SERVICE OFFICE
- 020 - FOOD SERVICE OFFICE
- 021 - RECEIVING
- 022 - COMM/TEL ROOM
- 023 - ELECTRICAL ROOM
- 024 - JANITOR
- 025 - LONG TERM STORAGE

FIRST FLOOR LEGEND

- 101 - MAIN STAIR
- 102 - CORRIDOR
- 103 - CORRIDOR
- 105 - CORRIDOR
- 106 - EXIT STAIR A
- 107 - CORRIDOR
- 108 - EXIT STAIR B
- 111 - BF STAFF WASHROOM
- 112 - JANITOR
- 114 - INMATE WASHROOM
- 115 - KITCHEN
- 116 - SPIRITUAL STORAGE
- 117 - MECHANICAL
- 120 - VISITATION
- 121 - CLERGY OFFICE
- 121A - CLERGY STORAGE
- 122 - SPIRITUALITY CENTRE
- 122A - PROGRAM ROOM
- 122B - PARTITION STORAGE
- 123 - PROGRAM ROOM
- 124 - PROGRAM ROOM
- 125 - STORAGE
- 126 - PROGRAM ROOM
- 127 - PROGRAM ROOM

SECOND FLOOR LEGEND

- 201 - MAIN STAIR
- 202 - CORRIDOR
- 203 - CORRIDOR
- 204 - CORRIDOR
- 205 - CORRIDOR
- 206 - EXIT STAIR A
- 208 - EXIT STAIR B
- 211 - BARRIER FREE WASHROOM
- 214 - WASHROOM
- 215 - INTERVIEW ROOM
- 216 - INTERVIEW ROOM
- 217 - MECHANICAL ROOM
- 218 - COUNSELLING
- 219 - OFFICE
- 220 - OFFICE
- 221 - OFFICE
- 222 - OFFICE
- 223 - OFFICE
- 224 - OFFICE
- 225 - BUILDING SYSTEMS
- 225A - COMM/TEL ROOM
- 226 - UNASSIGNED
- 227 - WORKSTATIONS
- 231 - PROGRAM OFFICE
- 232 - PROGRAM COORDINATOR
- 233 - UNASSIGNED
- 234 - PROGRAM OFFICE
- 235 - PROGRAM OFFICE
- 236 - PROGRAM OFFICE
- 237 - WORKSTATIONS
- 238 - COPY
- 239 - STORAGE

1	ISSUED FOR TENDER	10/27 2020
revisions		date
project	FIRE ALARM UPGRADE NOVA INSTITUTION	
project		

TRURO, NS

PROGRAMS BUILDING FIRE ALARM PLANS

designed	PM	conçu
date	MARCH 2020	
drawn	BD	dessiné
date	MARCH 2020	
approved	RGR	approuvé
date	MARCH 2020	
Tender	Soumission	
PWSC Project Manager	Administrateur de projets TPSGC	
project number	no. du projet	
R.089585.001		
drawing no.	no. du dessin	