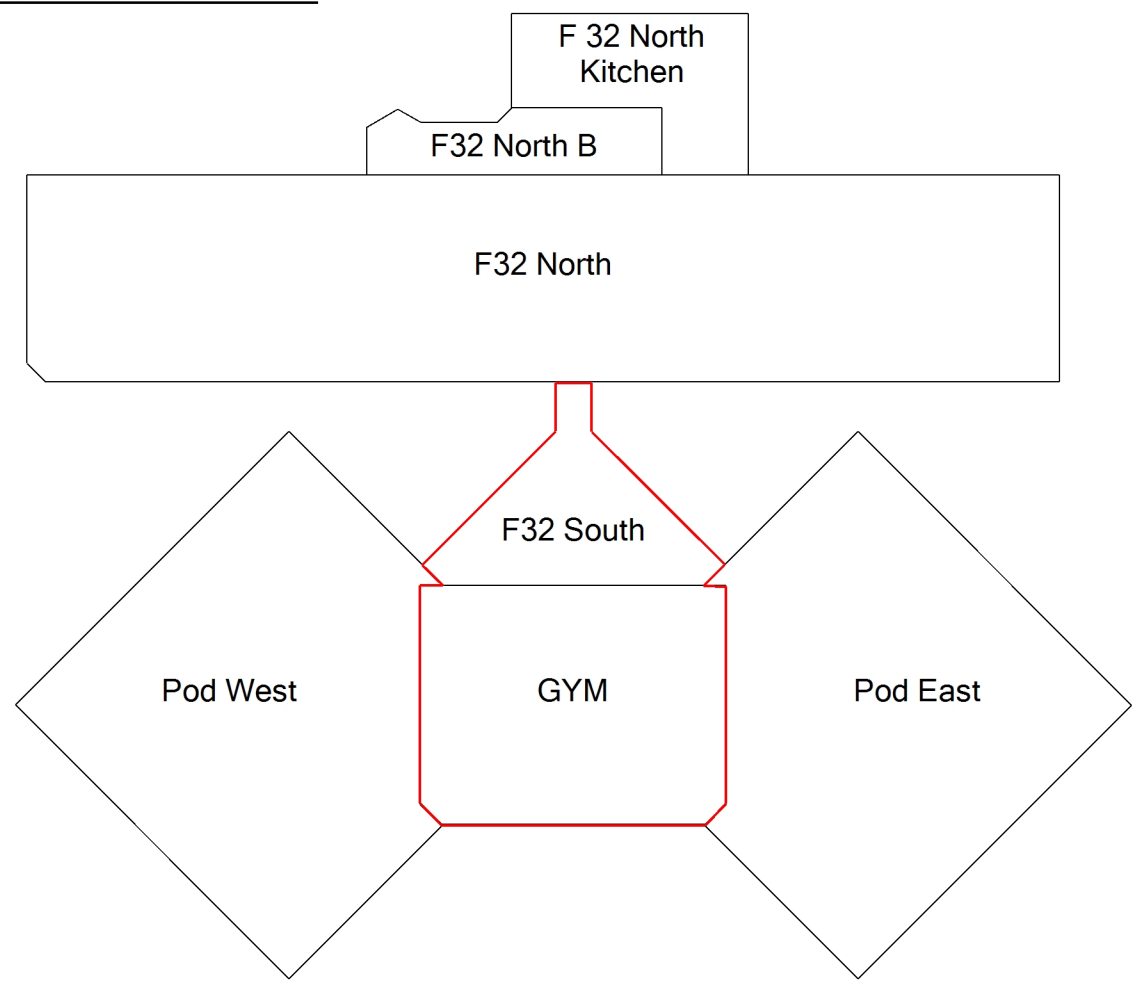


FRONTENAC INSTITUTION - SITE PLAN



Legend

 AREA OF ROOF REPLACEMENT

Notes

FRONTENAC INSTITUTION

DWG. By SDN

Date 08/20

Scale N.T.S

KINGSTON, ON



PROJECT PLAN - F32 SOUTH/GYM

CONSTRUCTION NOTES:

1. Top layers of extruded polystyrene may be reused. Approx 70%
2. Ballast to be stored and reused.
3. Fan curb on F32 South to be raised a minimum of 100mm.
4. Non-penetrating railing applied at ladder where indicated.
5. Gym Roof: Obsolete curbs to be removed down to structural deck.

Existing Composition:

- Ballast
- Woven Scrim
- 75mm Extruded Polystyrene
- 75mm Extruded Polystyrene
- Polysheet
- Two Ply Membrane
- Concrete Deck

New Composition:

- Ballast
- Filter Fabric
- 75mm Extruded Polystyrene
- 75mm Extruded Polystyrene
- Dimple Drainage Board
- Poly Sheet
- Inverted Roof Membrane (cold-applied)
- Concrete Deck

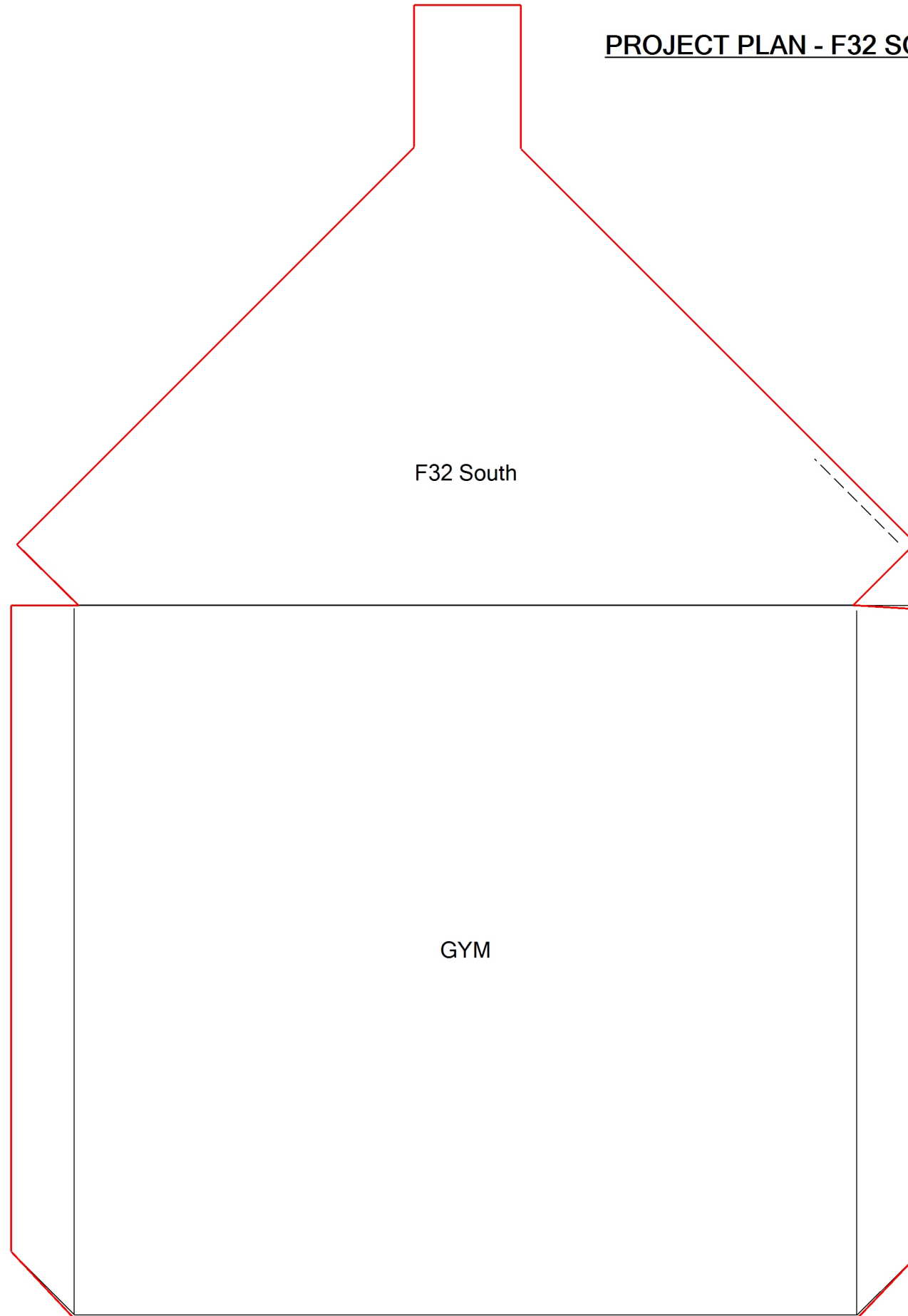


Image of Curbs to be removed

Legend

----- Install Non-Penetrating Railing

Notes

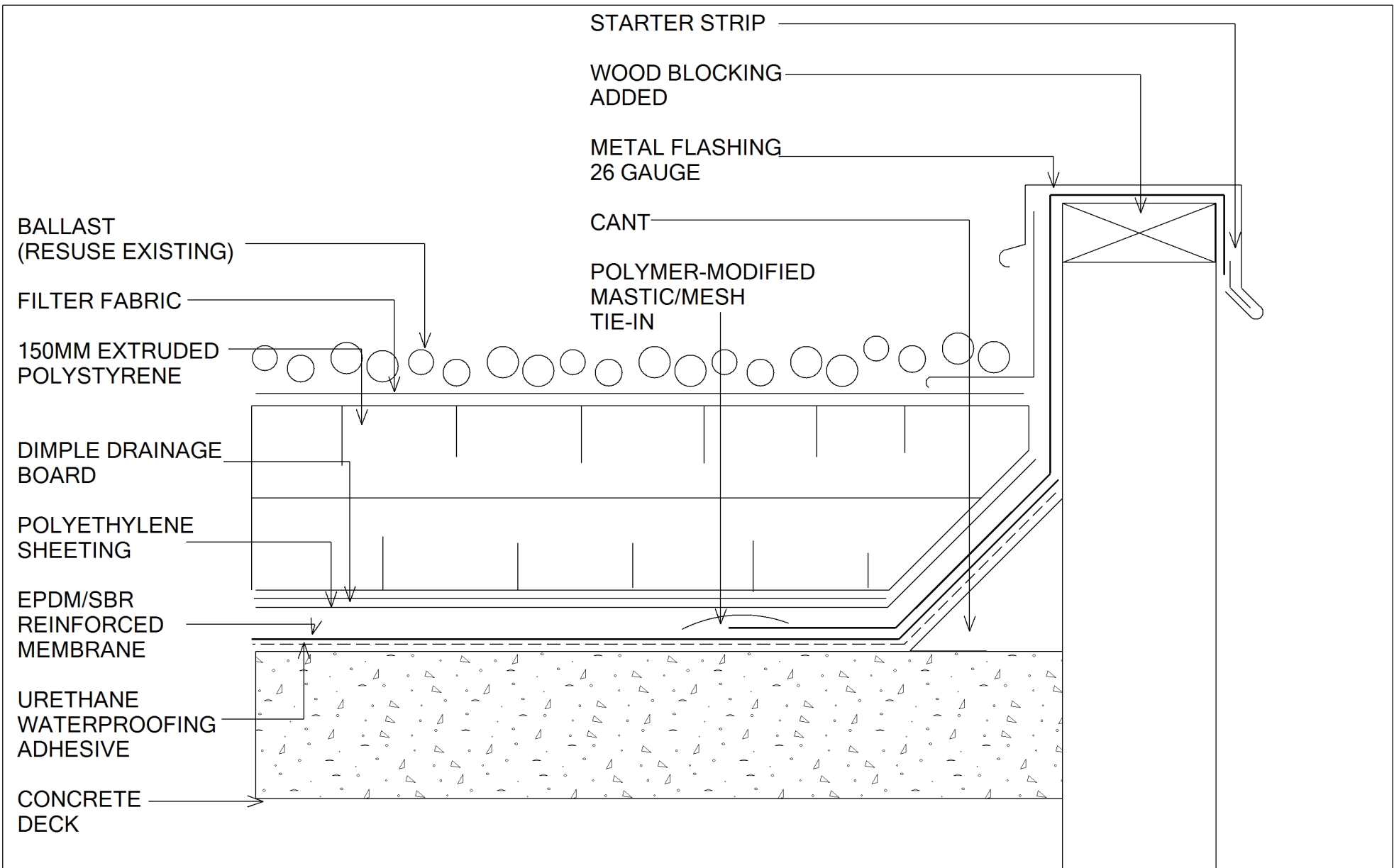
FRONTENAC INSTITUTION

DWG. By SDN

Date 08/20

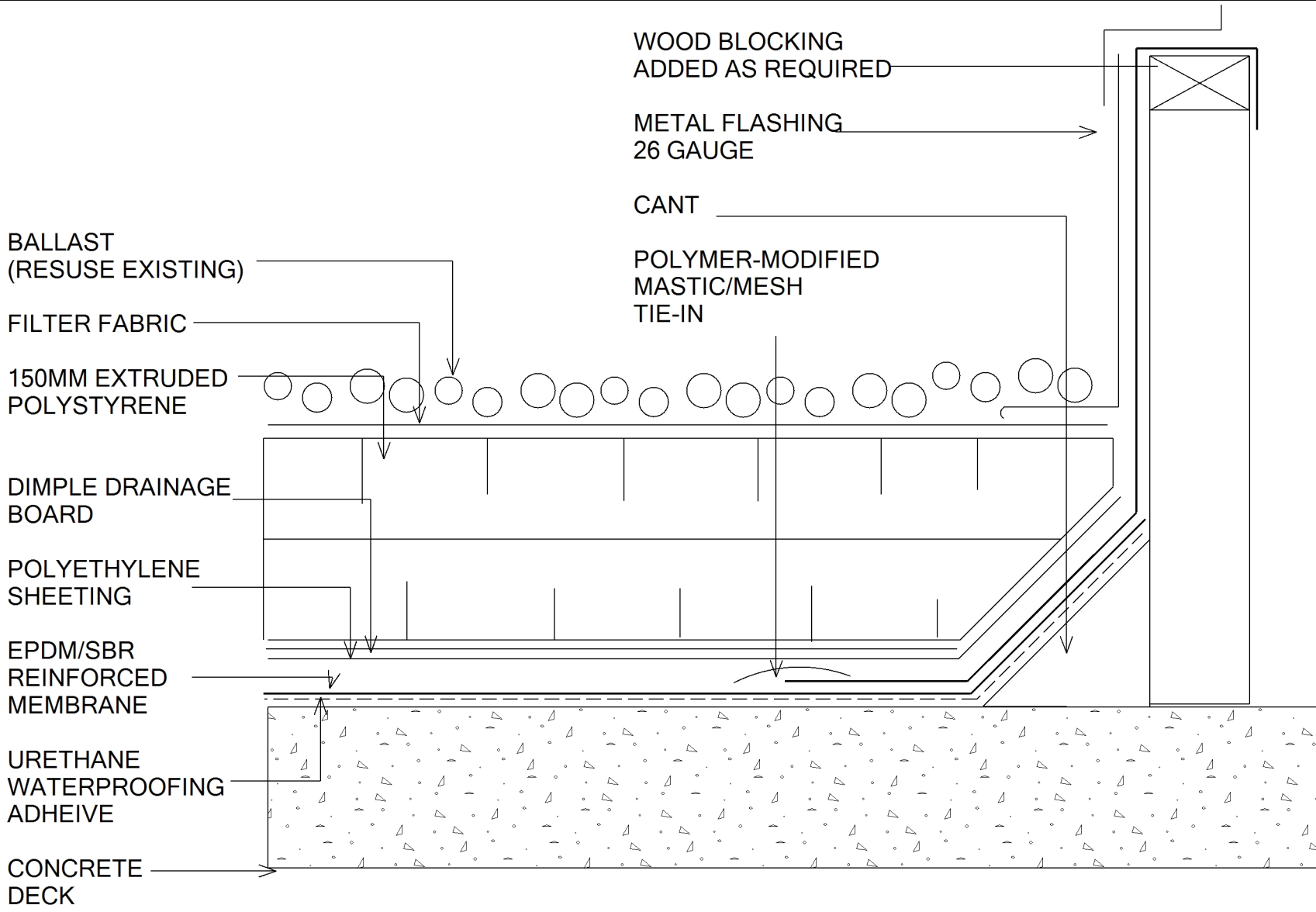
Scale N.T.S

KINGSTON, ON



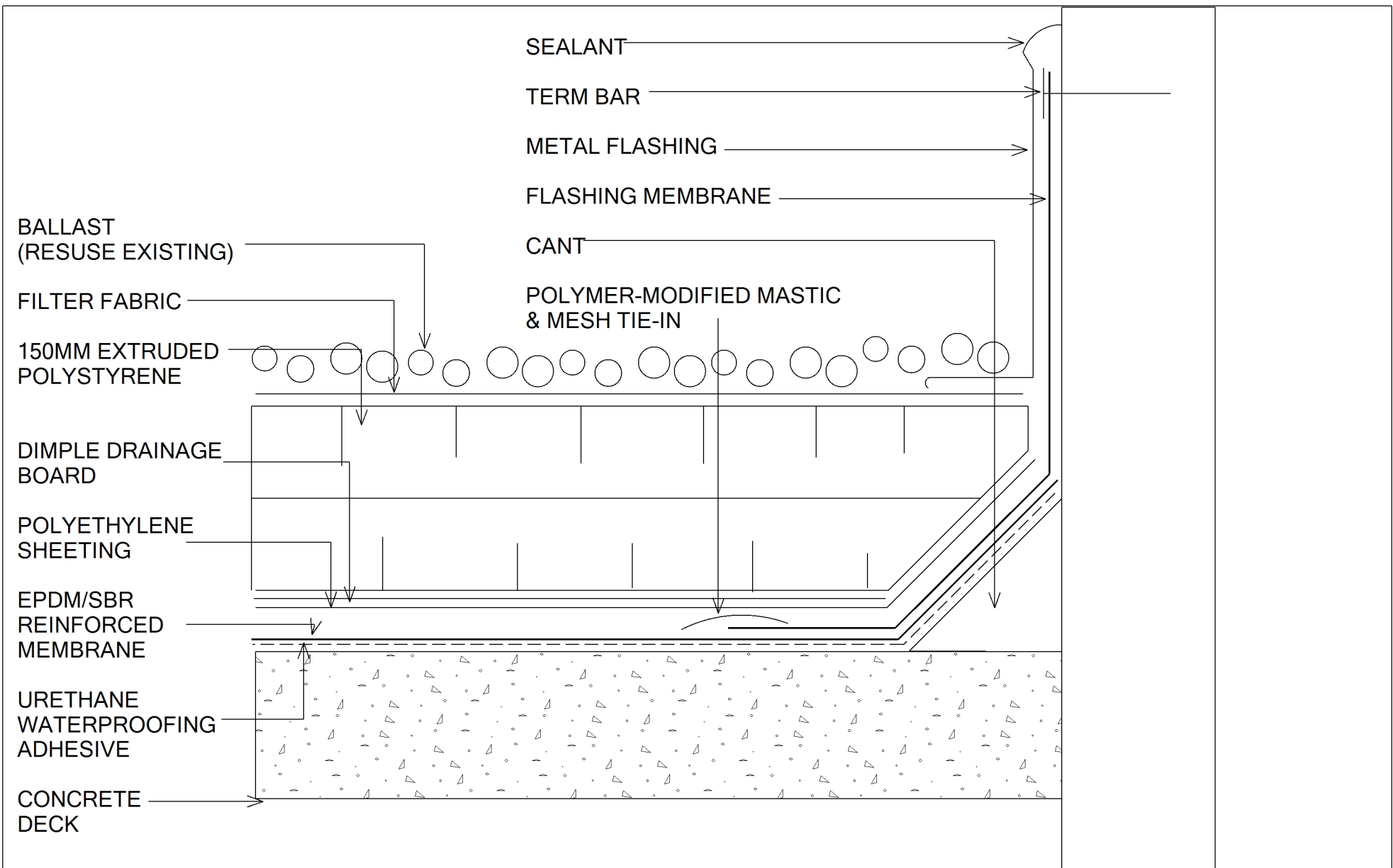
DETAIL -PARAPET TYPICAL

FRONTENAC INSTITUTION KINGSTON, ON		
F32 SOUTH/F32 GYM ROOF REPLACEMENT		
08/20	N.T.S.	DRAWN BY SDN



DETAIL -CURB TYPICAL

FRONTENAC INSTITUTION KINGSTON, ON		
F32 SOUTH/F32 GYM ROOF REPLACEMENT		
08/20	N.T.S.	DRAWN BY SDN



DETAIL -WALL TYPICAL

FRONTENAC INSTITUTION KINGSTON, ON		
F32 SOUTH/F32 GYM ROOF REPLACEMENT		
08/20	N.T.S.	DRAWN BY SDN