

TITRE DU PROJET
PROJECT TITLE

HAMILTON MOUNTAIN PPT-SCC CONSOLIDATION

ÉDIFICE ET ÉTAGE
BUILDING AND FLOOR

HAMILTON, ON

CONÇU PAR
DESIGNED BY
NO. DU PROJET
PROJECT No.

PSR19-0003

- ## #####
- ## #####
- ## #####
- F2 NEW FURNITURE LAYOUT
- ## #####
- F4 NEW SCREENS LAYOUT
- F5 SIGNAGE
- ## #####
- ## #####
- A3 POWER & COMMS
- ## #####
- A5 SECURITY
- A6 FINISHES
- ## #####
- ## #####
- ## #####
- ### #####

Canada

Biens Immobiliers,
Gestion du
Changement et
Services Régionaux
(BIGCSR)

Real Property,
Change Management
and Regional
Services
(RPCMRS)

Key Plan Plan Clé

LES ENTREPRENEURS DOIVENT VÉRIFIER TOUTES LES
DIMENSIONS ET CONDITIONS EXISTANTES DE
L'EMPLACEMENT ET DE RAPPORTER TOUT ANOMALIES AU
GESTIONNAIRES DU PROJET.
NE PAS MESURER SUR LES DESSINS.

CONTRACTORS TO VERIFY ALL DIMENSIONS &
CONDITIONS ON SITE AND IMMEDIATELY NOTIFY THE
PROJECT MANAGER OF ALL DISCREPANCIES.
DO NOT SCALE DRAWINGS.

99	REVISION DESCRIPTION	yyyy/mm/dd
4	REVISION DESCRIPTION	yyyy/mm/dd
3	REVISION DESCRIPTION	yyyy/mm/dd
2	REVISION DESCRIPTION	yyyy/mm/dd
1	REVISION DESCRIPTION	yyyy/mm/dd
No.	description	date

A A detail no. / no. de détail
B B location drawing no. / sur dessin no.

Project Projet

HAMILTON MOUNTAIN

HAMILTON, ON

Drawing Dessin

COVER PAGE

Designed By Conçu par

Date ##### (yyyy/mm/dd)

Reviewed By Examiné par

Date ##### (yyyy/mm/dd)

Approved by CFBO Approuvé par DGAPF

Date ##### (yyyy/mm/dd)

Approved by ISB Approuvé par DGSI

Date ##### (yyyy/mm/dd)

Client Approval Approbation du client

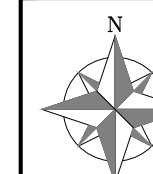
Date ##### (yyyy/mm/dd)

Project no. No. du projet

PSR19-0003

Drawing no. No. du dessin

C1



LES ENTREPRENEURS DOIVENT VÉRIFIER TOUTES LES DIMENSIONS ET CONDITIONS EXISTANTES DE L'EMPLACEMENT ET DE RAPPORTER TOUT ANOMALIES AU GESTIONNAIRES DU PROJET. NE PAS MESURER SUR LES DESSINS.

CONTRACTORS TO VERIFY ALL DIMENSIONS & CONDITIONS ON SITE AND IMMEDIATELY NOTIFY THE PROJECT MANAGER OF ALL DISCREPANCIES. DO NOT SCALE DRAWINGS.

No.	description	date
99	REVISION DESCRIPTION	yyyy/mm/dd
4	REVISION DESCRIPTION	yyyy/mm/dd
3	REVISION DESCRIPTION	yyyy/mm/dd
2	REVISION DESCRIPTION	yyyy/mm/dd
1	REVISION DESCRIPTION	yyyy/mm/dd

- A A detail no. / no. de détail
- B B location drawing no. / sur dessin no.

Project Projet

HAMILTON MOUNTAIN

HAMILTON, ON

Drawing Dessin

NEW FURNITURE LAYOUT

Designed By Conçu par

Date ##### (yyyy/mm/dd)

Reviewed By Examiné par

Date ##### (yyyy/mm/dd)

Approved by CFBO Approuvé par DGAPF

Date ##### (yyyy/mm/dd)

Approved by ISB Approuvé par DGSII

Date ##### (yyyy/mm/dd)

Client Approval Approbation du client

Date ##### (yyyy/mm/dd)

Project no. No. du projet

PSR19-0003

Drawing no. No. du dessin

F2

FURNITURE LEGEND

	SYSTEM FURNITURE SCREEN (XX = WIDTH / SEE PANEL MATRIX FOR MORE DETAILS).		OFFICE SEATING
	SYSTEM FURNITURE SLIDING DOOR (XX = WIDTH).		DRAFTING CHAIR WITH FOOT RING
	SYSTEM FURNITURE FILLER OR 90° CONNECTOR		GUEST CHAIR, ARMS, CASTERS
	TABLE (XXxXX = DEPTHxWIDTH / C=CRANK / E=ELECTRIC / R=CASTER)		GUEST CHAIR, ARMLESS, NO CASTER
	CLIENT ACCESS WORKSTATION (CAWS)		BEAM SEATING (SINGLE - DOUBLE UNITS / 2, 3, 4, 5 SEATS)
	WELCOME POINT/ ASSISTANCE POINT WORKSTATION		MFD (MULTI-FUNCTION DEVICE)
	CORNER HEIGHT ADJUSTABLE TABLE		DDU (X = WALL MOUNTED, CEILING MOUNTED, FREESTANDING)
	MOBILE PEDESTAL (BBF = BOX, BOX, FILE / FF = FILE, FILE)		ATOM DISPLAY (X = WALL MOUNTED, CEILING MOUNTED, FREESTANDING)
	PERSONAL STORAGE TOWER (XX = HEIGHT / DOOR LEFT OR RIGHT)		PRINTER
	LOCKER (XH = QTY OF DOORS)		SHREDDER
	LATERAL FILE CABINET (X = QTY OF DRAWERS / C = COMBINATION LOCK)		TENSILE POST
	SHELVING SYSTEM (XX x XX = DEPTHxWIDTH)		TROLLEY
	STORAGE CABINET (H = HIGH HEIGHT / L = LOW HEIGHT)		WHEELCHAIR
	SECURE CONTAINER		PERSON STANDING
	SECURE DROP BOX	EPPS FUTURE NEEDS	
	SAFE DEPOSIT BOX		

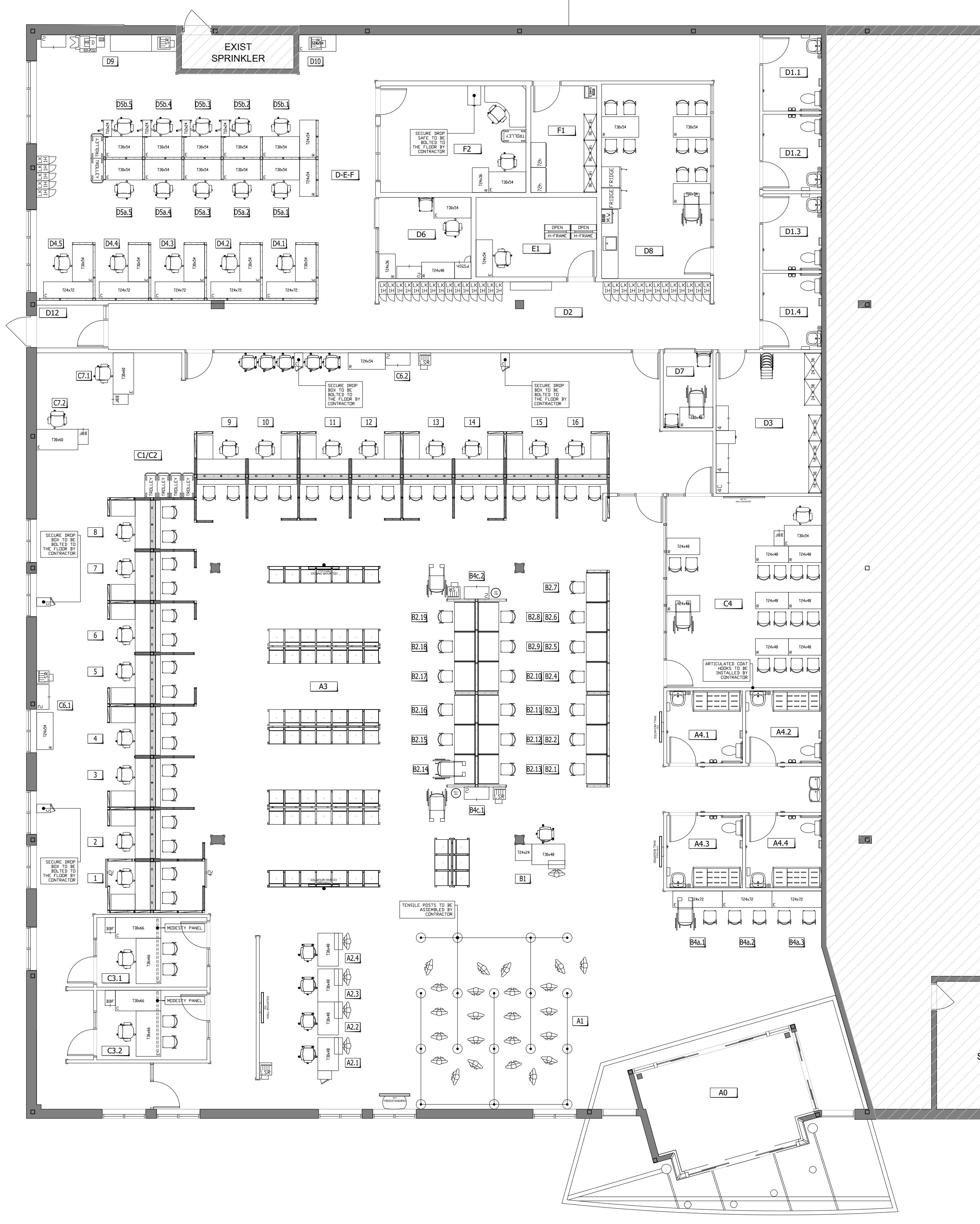
FURNITURE FINISHES

TABLE =
CHAIRS =
WELCOME POINT / ASSISTANCE POINT =
MONITOR ARMS =
TASK LIGHTING =
CPU HOLDERS =

PANEL SYSTEM FINISHES
SURFACE =
EDGE TRIM STYLE =
EDGE TRIM FINISH =
VERTICAL FINISH COLOR =
ACCESSORIES AND SUPPORTS =

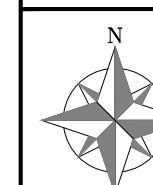
NOTES FOR SYSTEM FURNITURE SUPPLIER/INSTALLER

- REPAIR ANY DAMAGE CAUSED TO CEILING GRID OR CEILING TILES DURING INSTALLATION.
- SEE POWER AND COMMUNICATION PLAN FOR LOCATION OF VOICE, DATA, ELECTRICAL OUTLETS AND POWER POLES FOR SCREENS.
- REMOVE FABRIC ELEMENTS AND OVERHEAD STORAGE MODULES, ON ONE SIDE ONLY, WHERE POWER POLES ENTER THE SCREEN TO ALLOW ACCESS TO ELECTRICIANS AND CABLING TECHNICIANS. REINSTALL ONCE WORK HAS BEEN COMPLETED.
- ADJUST POWER POLE LOCATION AS REQUIRED DEPENDING ON LOCATION OF LIGHTING FIXTURES. ESDC PROJECT MANAGER APPROVE FINAL LOCATION.
- CHECK ALL MEASUREMENTS BEFORE INSTALLING FURNITURE TO ENSURE PROPER SIZING.
- DUST ALL FURNITURE FOLLOWING INSTALLATION AND REMOVE ANY DEBRIS.



1 NEW FURNITURE LAYOUT
SCALE 1:100

PAPER SIZE: A1 23.4 x 33.1 (894 x 841) • PLOT DATE & TIME: 2020-12-21 10:54:45 • READ DRAWING ACCORDINGLY.



LES ENTREPRENEURS DOIVENT VÉRIFIER TOUTES LES DIMENSIONS ET CONDITIONS EXISTANTES DE L'EMPLACEMENT ET DE RAPPORTER TOUT ANOMALIES AU GESTIONNAIRES DU PROJET. NE PAS MESURER SUR LES DESSINS.

CONTRACTORS TO VERIFY ALL DIMENSIONS & CONDITIONS ON SITE AND IMMEDIATELY NOTIFY THE PROJECT MANAGER OF ALL DISCREPANCIES. DO NOT SCALE DRAWINGS.

99	REVISION DESCRIPTION	yyyy/mm/dd
4	REVISION DESCRIPTION	yyyy/mm/dd
3	REVISION DESCRIPTION	yyyy/mm/dd
2	REVISION DESCRIPTION	yyyy/mm/dd
1	REVISION DESCRIPTION	yyyy/mm/dd

No.	description	date
-----	-------------	------

A	A detail no. / no. de détail
B	B location drawing no. / sur dessin no.

Project / Projet

HAMILTON MOUNTAIN

HAMILTON, ON

Drawing / Dessin

NEW SCREENS

Designed By / Conçu par

Date / (yyyy/mm/dd)

Reviewed By / Examiné par

Date / (yyyy/mm/dd)

Approved by CFBO / Approuvé par DGAPF

Date / (yyyy/mm/dd)

Approved by ISB / Approuvé par DGSJ

Date / (yyyy/mm/dd)

Client Approval / Approbation du client

Date / (yyyy/mm/dd)

Project no. / No. du projet

PSR19-0003

Drawing no. / No. du dessin

F4

FURNITURE LEGEND

	SYSTEM FURNITURE SCREEN (xx = WIDTH).
	SYSTEM FURNITURE SLIDING DOOR (xx = WIDTH).
	SYSTEM FURNITURE FILLER OR 90° CONNECTOR
	SYSTEM FURNITURE GLAZED ELEMENT (IN ADD-ON SECTION).
	SYSTEM FURNITURE ACCESSORY ELEMENT (IN ADD-ON SECTION + TOP SECTION OF SCREEN).

NOTES FOR SYSTEM FURNITURE SUPPLIER/INSTALLER

- REPAIR ANY DAMAGE CAUSED TO CEILING GRID OR CEILING TILES DURING INSTALLATION.
- SEE POWER AND COMMUNICATION PLAN FOR LOCATION OF VOICE, DATA, ELECTRICAL OUTLETS AND POWER POLES FOR SCREENS.
- REMOVE FABRIC ELEMENTS AND OVERHEAD STORAGE MODULES, ON ONE SIDE ONLY, WHERE POWER POLES ENTER THE SCREEN TO ALLOW ACCESS TO ELECTRICIANS AND CABLING TECHNICIANS. REINSTALL ONCE WORK HAS BEEN COMPLETED.
- ADJUST POWER POLE LOCATION AS REQUIRED DEPENDING ON LOCATION OF LIGHTING FIXTURES. ESDC PROJECT MANAGER APPROVE FINAL LOCATION.
- CHECK ALL MEASUREMENTS BEFORE INSTALLING FURNITURE TO ENSURE PROPER SIZING.
- DUST ALL FURNITURE FOLLOWING INSTALLATION AND REMOVE ANY DEBRIS.

FURNITURE FINISHES

FABRIC =
LAMINATE =
FRAME =

PANEL MATRIX

CUSTOM (24")

CXXL1FP1

Lower element 1	Lower element 2
Laminate	Fabric + power and data

BASE HEIGHT (28" - 38")

BHXXL2		BHXXL1P1		BHXXLP2	
Lower element 1	Lower element 2	Lower element 1	Lower element 2	Lower element 1	Lower element 2
Laminate	Laminate	Laminate	Laminate + power and data	Laminate + power and data	Laminate + power and data

WORKSURFACE PRIVACY (42" - 48")

WPXXF4

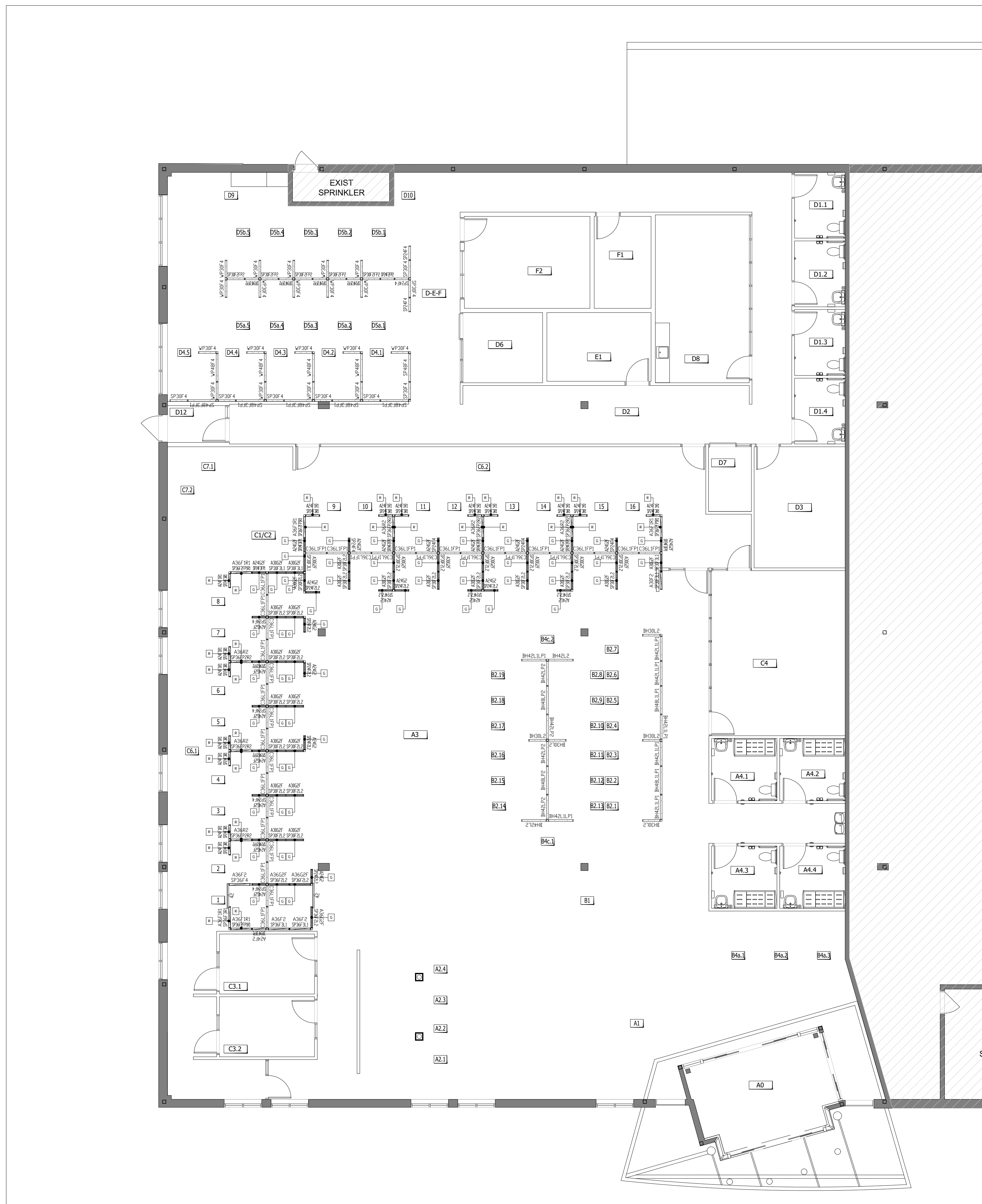
Upper element 1	Upper element 2
Fabric	Fabric
Lower element 1	Lower element 2
Fabric	Fabric

SEATED PRIVACY (50" - 54")

SPXXF4		SPXXF3P1		SPXXF2P2		SPXXF3R1	
Upper element 1	Upper element 2	Upper element 1	Upper element 2	Upper element 1	Upper element 2	Upper element 1	Upper element 2
Fabric	Fabric	Fabric	Fabric	Fabric	Fabric	Fabric	Accessory rail
Lower element 1	Lower element 2	Lower element 1	Lower element 2	Lower element 1	Lower element 2	Lower element 1	Lower element 2
Fabric	Fabric	Fabric	Fabric + power and data	Fabric + power and data	Fabric + power and data	Fabric	Fabric
SPXXF2FP1R1		SPXXF2R2		SPXXF2L2		SPXXF3L1	
Upper element 1	Upper element 2	Upper element 1	Upper element 2	Upper element 1	Upper element 2	Upper element 1	Upper element 2
Accessory rail	Fabric	Accessory rail	Accessory rail	Fabric	Fabric	Fabric	Fabric
Lower element 1	Lower element 2	Lower element 1	Lower element 2	Lower element 1	Lower element 2	Lower element 1	Lower element 2
Fabric + power and data	Fabric	Fabric + power and data	Fabric + power and data	Laminate	Laminate	Fabric	Laminate

INTEGRATED ADD-ON (To be integrated with SEATED PRIVACY to achieve 64" - 66")

AXXF2		AXXF1R1		AXXR2		AXXG2	
Add-on 1	Add-on 2	Add-on 1	Add-on 2	Add-on 1	Add-on 2	Add-on 1	Add-on 2
Fabric	Fabric	Fabric	Accessory rail	Accessory rail	Accessory rail	Glazing	Glazing
						AXXG2F=Frosted	AXXG2F=Frosted



1 NEW SCREENS LAYOUT
SCALE 1:100