



ADDENDUM 2

QUESTION AND ANSWER

Q1. Are there any layouts available for the sites in the RFP? With Covid, we have been asked to restrict our site visits as much as possible.

A1. Attached you will find the floor plans for the following locations:

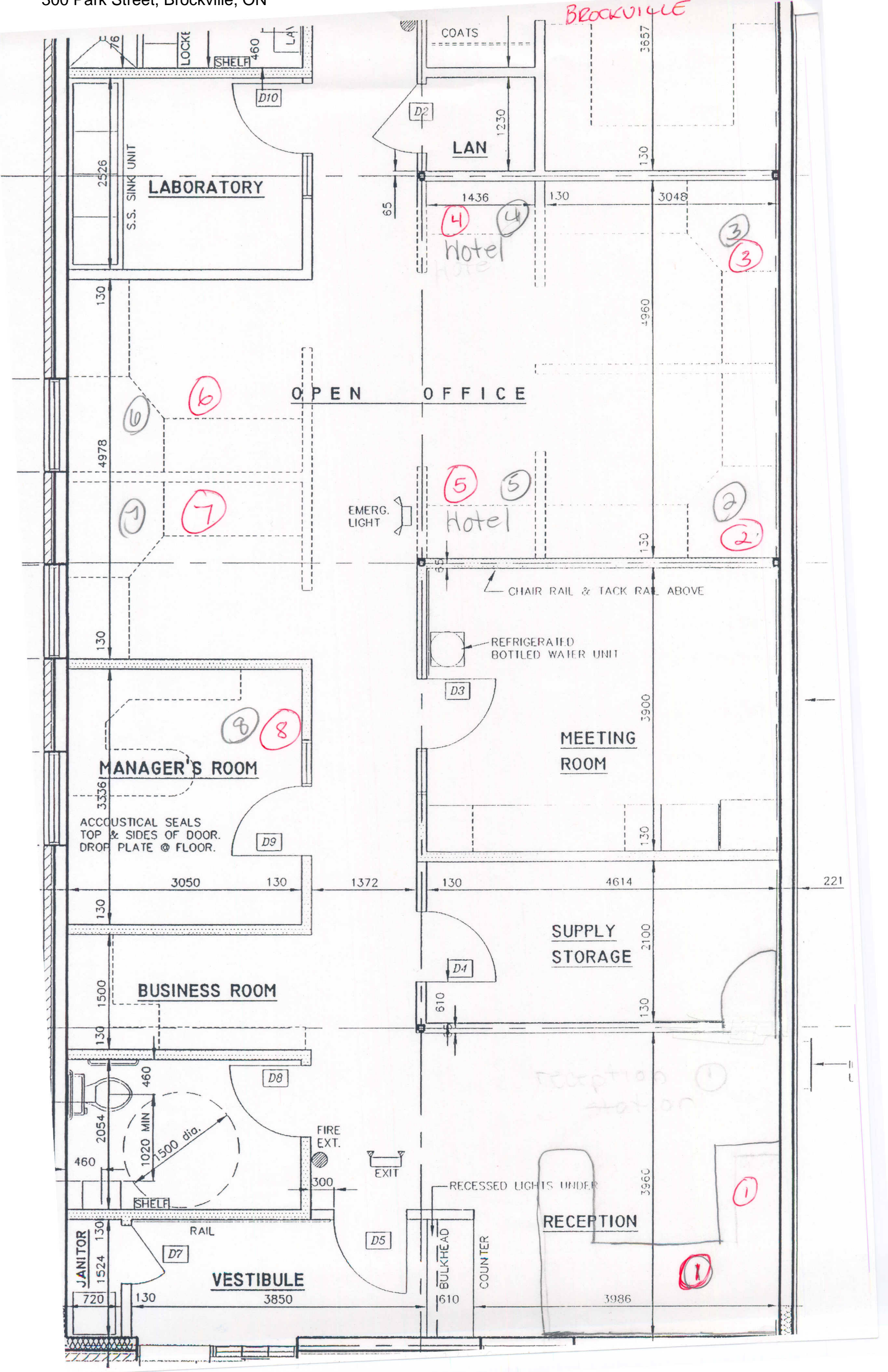
- 300 Park Street, Brockville, ON
- 163 Simcoe Street, Peterborough, ON
- 145 Renfrew Drive, Markham, ON
- 709 Main Street West, Hamilton, ON
- 60 Vanedward Drive, Port Perry, ON

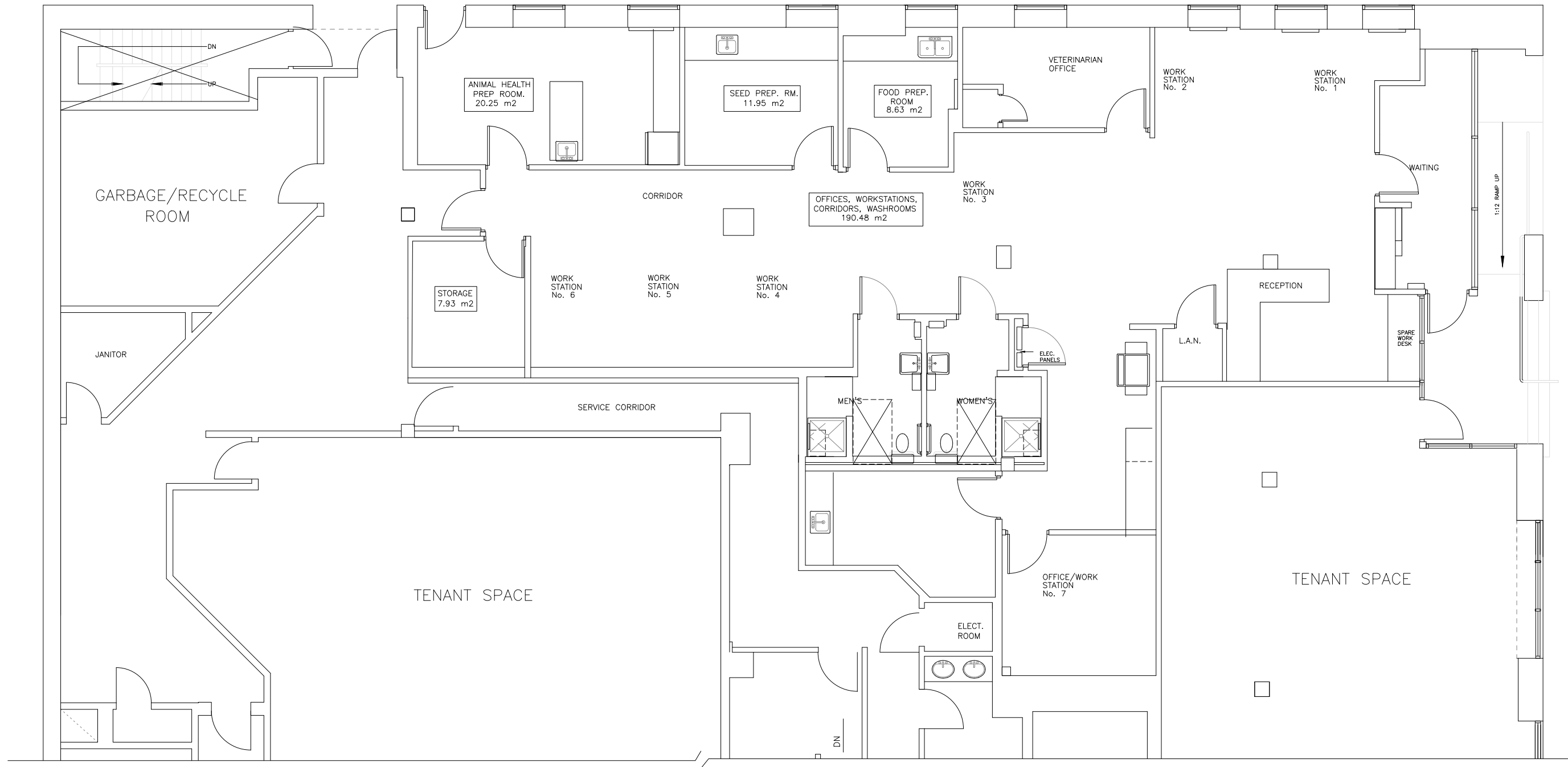
Unfortunately, a floor plan is not available for: 140 Renfrew Drive, Markham, ON

Q2. I reviewed the paperwork and didn't see an area where I could include an up front installation fee (only monthly monitoring and maintenance fees year to year). As we would need to bid on upgrading each sites base panel equipment, is there a way we could enter in the lump sum up front installation cost?

A2. Attachment 1 to Part 3 – “Pricing Schedule” and Annex B – “Basis of Payment” has been replaced entirely by the attached.

ALL OTHER TERMS AND CONDITIONS OF THE ABOVE RFP REMAIN UNCHANGED.




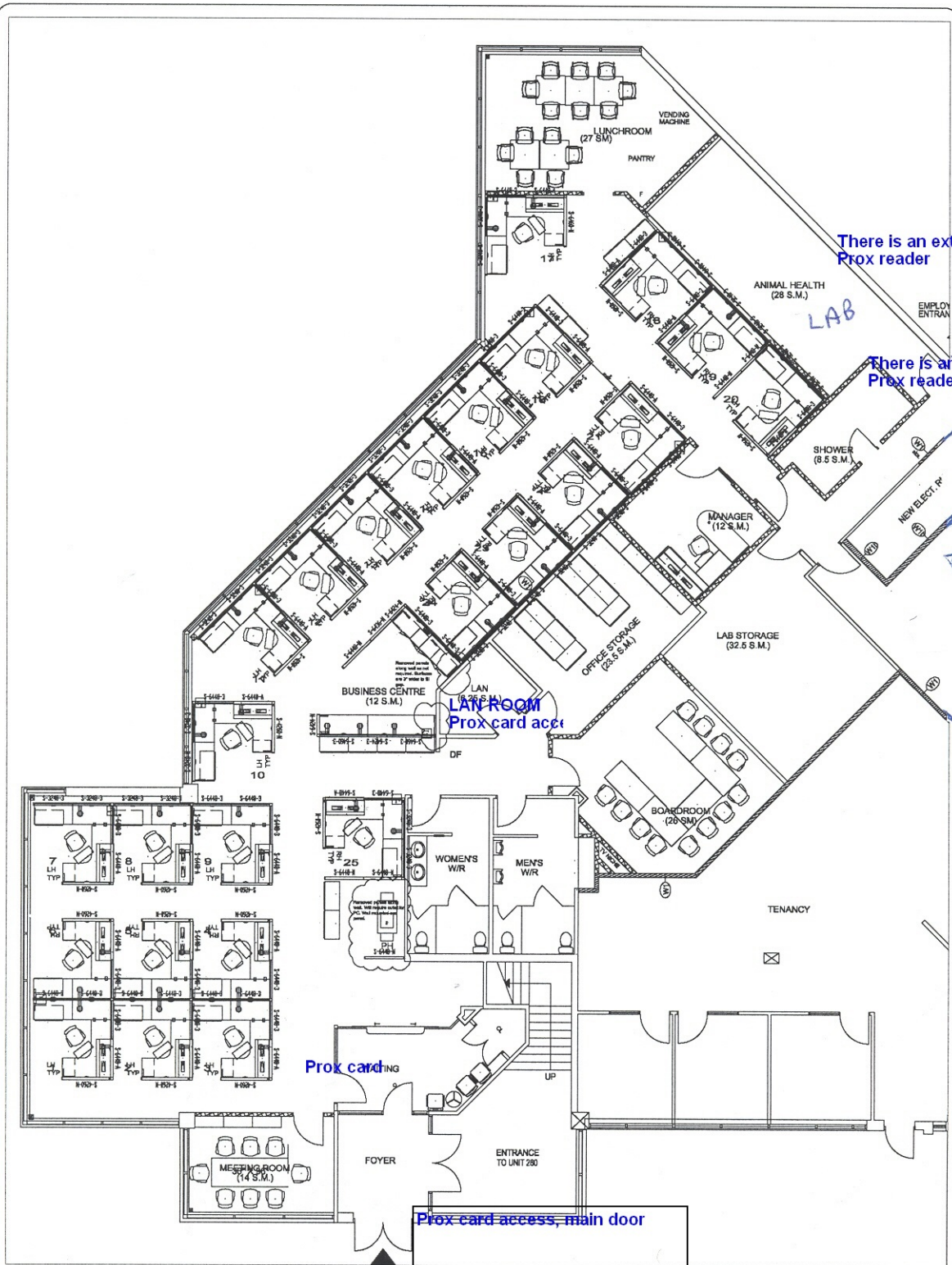


\\CFIA\Real Property\CAFM\ONTARIO\MasterDWGS\ASSETS\ON-PETERBOROUGH-FL1-AM.dwg

AREA SUMMARY	
TOTAL OCCUPIED AREA = 239.24 m2	
AREA BREAKDOWN	
OFFICES, WORKSTATIONS, CORRIDORS, WASHROOMS	= 190.48 m2
ANIMAL HEALTH PREP ROOM	= 20.25 m2
SEED PREP ROOM	= 11.95 m2
FOOD PREP ROOM	= 8.63 m2
STORAGE	= 7.93 m2

163 Simcoe Street, Peterborough, ON

	Canadian Food Inspection Agency	Agence canadienne d'inspection des aliments
PROJECT TITLE 163 SIMCOE ST., PETERBOROUGH ON FL-1		TITRE DU PROJET
DRAWING TITLE AMS-ONTARIO OCCUPANCY PLAN - BRANCH		TITRE DU DESSIN
SCALE 1:100	ECHELLE 531	DATE OCT 2013



CFIA - RICHMOND HILL

CLIENT:
CFIA
RICHMOND HILL

DRAWING TITLE: PROPOSED

DATE: JUNE 28, 2006

SCALE: Not To Scale

DRAWN BY: MRUCE

DWG FILE: OG311PA

SIP REFERENCE: YG311PA (multiple sifs)

ACCOUNT MGR: DTURNER

CHECKED BY: CH

PROPOSAL #: PRO #

10			20		
9			19		
8			18		
7			17		
6			16		
5			15		
4			14		
3			13		
2			12		
1	28/6/6	notes for approval	11		
NO.	DATE	REVISION	NO.	DATE	REVISION

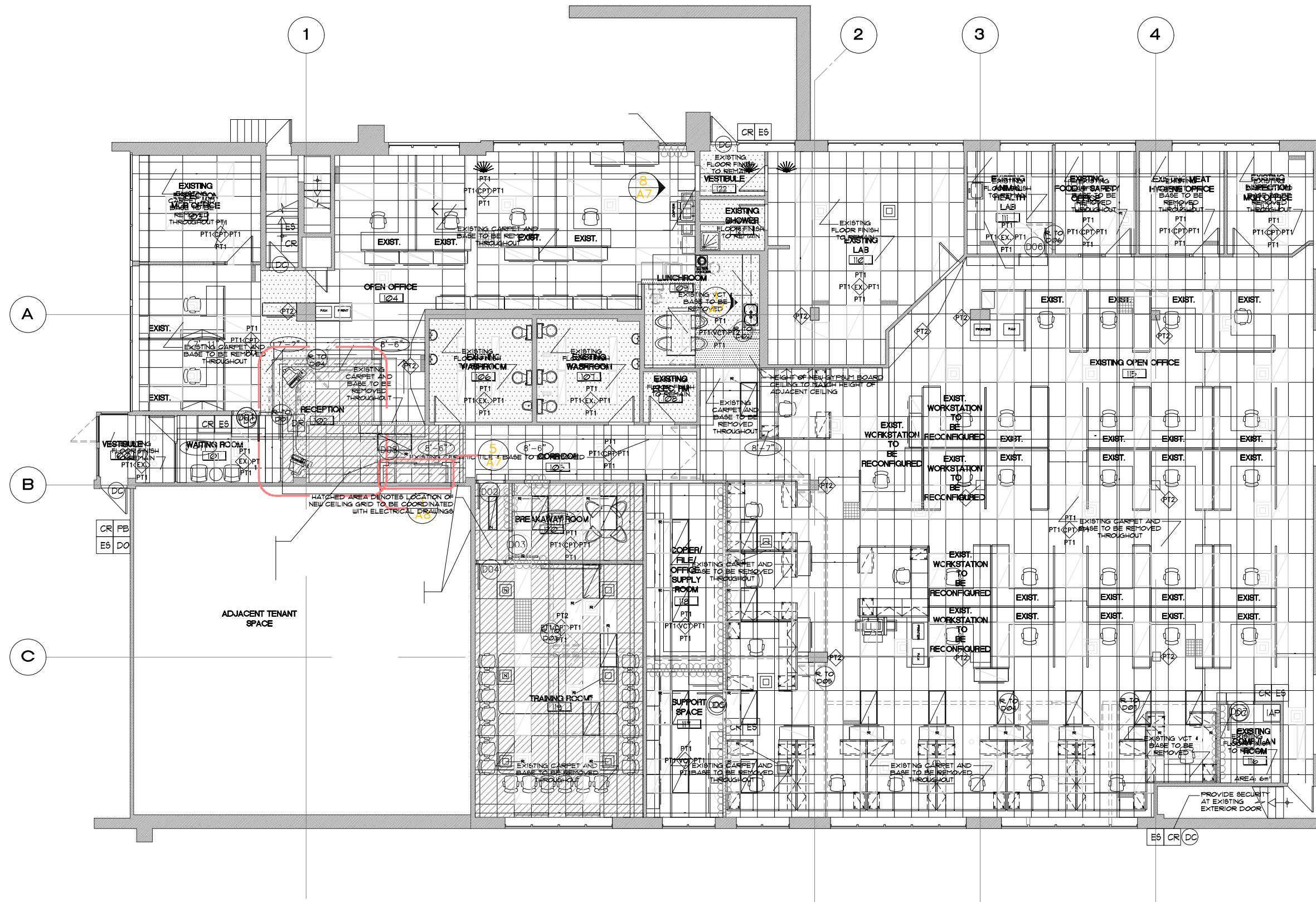
NOTES:

CTI IS NOT RESPONSIBLE FOR ANY DISCREPANCIES BETWEEN THE DRAWING AND ACTUAL SITE MEASUREMENTS, AS WELL AS ANY ERRORS WHICH MAY OCCUR DUE TO THESE DISCREPANCIES.

ORIGINAL SCALED DRAWING AND OR DISK RECEIVED FROM _____

CTI WORKING ENVIRONMENTS
8901 EDWARDS BLVD.
MISSISSAUGA, ON
L5T 2T9
TEL: 905-565-8800
FAX: 905-565-8900

PROJECT NO: PAGE NO:
06311 1 of 1

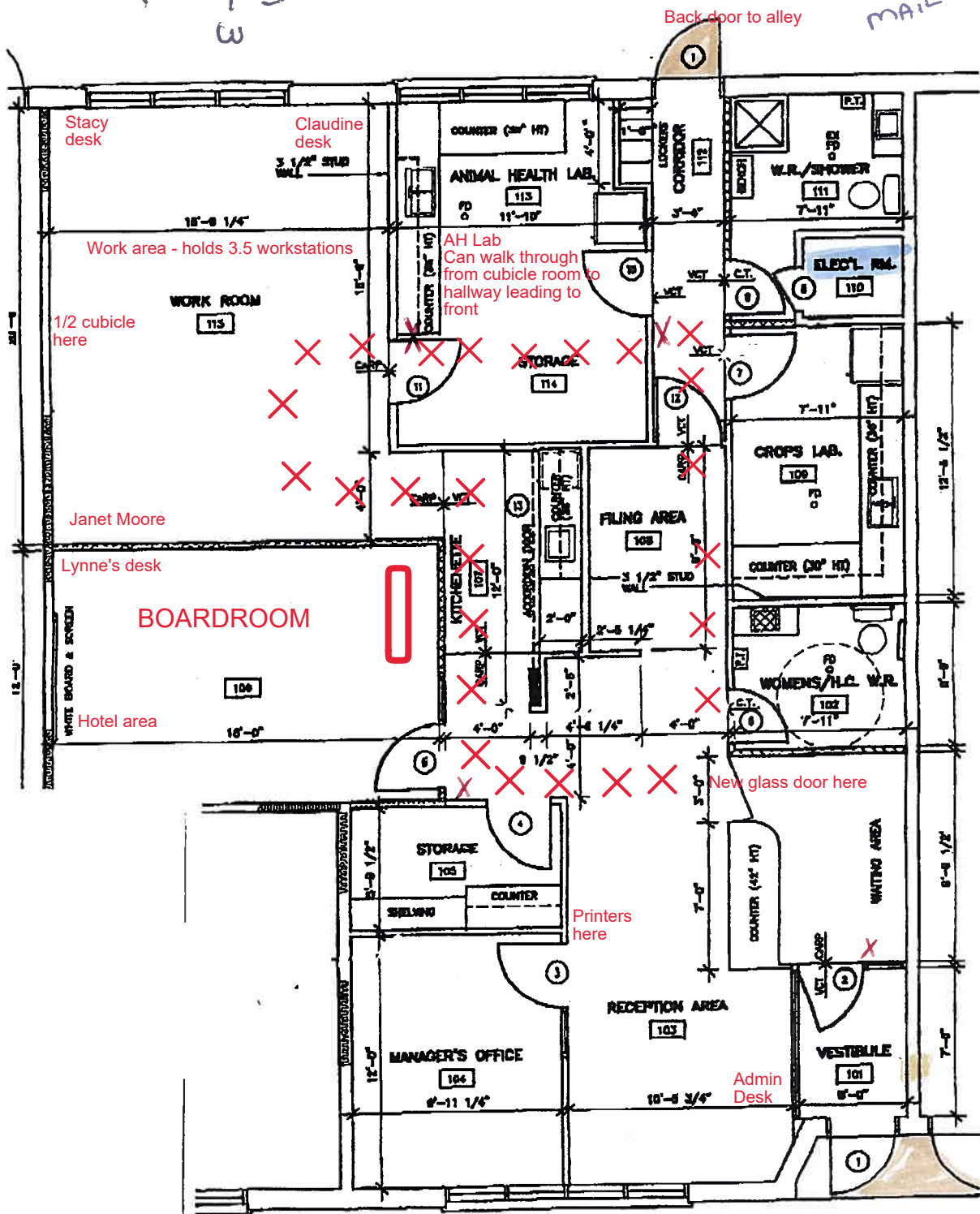


709 Main Street West, Hamilton, ON

		Canadian Food Inspection Agency Agence canadienne d'inspection des aliments	
PROJECT TITLE 709 MAIN ST, HAMILTON ON FL-1			
DRAWING TITLE AMS-ONTARIO OCCUPANCY PLAN - BRANCH			
SCALE 1:150	ECHELLE 1:150	BLDG NO. 565	DATE OCT 2013

FLOOR PLAN

RENDEZ-VOUS
POINT
MAILBOXES



- SECURITY SYSTEM control

Fire Exits

Fire Extinguishers

Electrical Room

RENDEZVOUS
POINT
mail boxes



ATTACHMENT 1 TO PART 3 – PRICING SCHEDULE

The Bidder should complete this pricing schedule and include it in its financial bid. As a minimum, the Bidder must respond to this pricing schedule by inserting in its financial bid for each of the periods specified below its quoted annual maintenance cost.

During the period of the Contract, for Work performed in accordance with the Contract, the Contractor will be paid as specified below.

Provide the total annual maintenance cost broken down by building for the initial contract period and all option periods:

1.1 INITIAL PERIOD

A- Contract Period (From contract award to December 31, 2021)

INITIAL PERIOD From Contract Award to December 31, 2021		
	Locations	Firm All-Inclusive Installation Fee (A)
1	300 Park Street, Brockville, ON	\$ _____
2	163 Simcoe Street, Peterborough, ON	\$ _____
3	140 Renfrew Drive, Markham, ON	\$ _____
4	145 Renfrew Drive, Markham, ON	\$ _____
5	709 Main Street West, Hamilton, ON	\$ _____
6	60 Vanedward Drive, Port Perry, ON	\$ _____
	Sub-Total Estimated Contract Cost (B = 1A + 2A + 3A + 4A + 5A + 6A): (exclusive of GST/HST)	\$ _____



INITIAL PERIOD From Contract Award to December 31, 2021				
	Locations	Number of Months	Firm All-Inclusive Monthly Maintenance Rate	Total Cost (Firm All-Inclusive Annual Maintenance Rate)
		(C)	(D)	(E = C x D)
1	300 Park Street, Brockville, ON	12 months	\$ _____ / month	\$ _____
2	163 Simcoe Street, Peterborough, ON	12 months	\$ _____ / month	\$ _____
3	140 Renfrew Drive, Markham, ON	12 months	\$ _____ / month	\$ _____
4	145 Renfrew Drive, Markham, ON	12 months	\$ _____ / month	\$ _____
5	709 Main Street West, Hamilton, ON	12 months	\$ _____ / month	\$ _____
6	60 Vanedward Drive, Port Perry, ON	12 months	\$ _____ / month	\$ _____
Sub-Total Estimated Contract Cost (F = 1E + 2E + 3E + 4E + 5E + 6E): (exclusive of GST/HST)				\$ _____

*For evaluation purposes.

1.2 OPTIONAL PERIODS

B- Option to Extend the Term of the Contract (From January 1, 2021 to December 31, 2025)

OPTION PERIOD 1 From January 1, 2021 to December 31, 2022				
	Locations	Number of Months	Firm All-Inclusive Monthly Maintenance Rate	Total Cost (Firm All-Inclusive Annual Maintenance Rate)
		(G)	(H)	(I = G x H)
1	300 Park Street, Brockville, ON	12 months	\$ _____ / month	\$ _____
2	163 Simcoe Street, Peterborough, ON	12 months	\$ _____ / month	\$ _____



3	140 Renfrew Drive, Markham, ON	12 months	\$ _____ / month	\$ _____
4	145 Renfrew Drive, Markham, ON	12 months	\$ _____ / month	\$ _____
5	709 Main Street West, Hamilton, ON	12 months	\$ _____ / month	\$ _____
6	60 Vanedward Drive, Port Perry, ON	12 months	\$ _____ / month	\$ _____
Sub-Total Estimated Contract Cost (J = 1I + 2I + 3I + 4I + 5I + 6I): (exclusive of GST/HST)				\$ _____

***For evaluation purposes.**

OPTION PERIOD 2 From January 1, 2022 to December 31, 2023				
	Locations	Number of Months	Firm All-Inclusive Monthly Maintenance Rate	Total Cost (Firm All- Inclusive Annual Maintenance Rate)
		(K)	(L)	(M = K x L)
1	300 Park Street, Brockville, ON	12 months	\$ _____ / month	\$ _____
2	163 Simcoe Street, Peterborough, ON	12 months	\$ _____ / month	\$ _____
3	140 Renfrew Drive, Markham, ON	12 months	\$ _____ / month	\$ _____
4	145 Renfrew Drive, Markham, ON	12 months	\$ _____ / month	\$ _____
5	709 Main Street West, Hamilton, ON	12 months	\$ _____ / month	\$ _____
6	60 Vanedward Drive, Port Perry, ON	12 months	\$ _____ / month	\$ _____
Sub-Total Estimated Contract Cost (N = 1M + 2M + 3M + 4M + 5M + 6M): (exclusive of GST/HST)				\$ _____

***For evaluation purposes.**



OPTION PERIOD 3
From January 1, 2023 to December 31, 2024

	Locations	Number of Months	Firm All-Inclusive Monthly Maintenance Rate	Total Cost (Firm All-Inclusive Annual Maintenance Rate)
		(O)	(P)	(Q = O x P)
1	300 Park Street, Brockville, ON	12 months	\$ _____ / month	\$ _____
2	163 Simcoe Street, Peterborough, ON	12 months	\$ _____ / month	\$ _____
3	140 Renfrew Drive, Markham, ON	12 months	\$ _____ / month	\$ _____
4	145 Renfrew Drive, Markham, ON	12 months	\$ _____ / month	\$ _____
5	709 Main Street West, Hamilton, ON	12 months	\$ _____ / month	\$ _____
6	60 Vanedward Drive, Port Perry, ON	12 months	\$ _____ / month	\$ _____
	Sub-Total Estimated Contract Cost (R = 1Q + 2Q + 3Q + 4Q + 5Q + 6Q): (exclusive of GST/HST)			\$ _____

***For evaluation purposes.**

OPTION PERIOD 4
From January 1, 2024 to December 31, 2025

	Locations	Number of Months	Firm All-Inclusive Monthly Maintenance Rate	Total Cost (Firm All-Inclusive Annual Maintenance Rate)
		(S)	(T)	(U = S x T)
1	300 Park Street, Brockville, ON	12 months	\$ _____ / month	\$ _____
2	163 Simcoe Street, Peterborough, ON	12 months	\$ _____ / month	\$ _____
3	140 Renfrew Drive, Markham, ON	12 months	\$ _____ / month	\$ _____



4	145 Renfrew Drive, Markham, ON	12 months	\$ _____ / month	\$ _____
5	709 Main Street West, Hamilton, ON	12 months	\$ _____ / month	\$ _____
6	60 Vanedward Drive, Port Perry, ON	12 months	\$ _____ / month	\$ _____
Sub-Total Estimated Contract Cost (V = 1U + 2U + 3U + 4U + 5U + 6U): (exclusive of GST/HST)				\$ _____

***For evaluation purposes.**

1.3 TOTAL EVALUATED PRICE

TOTAL EVALUATED PRICE From Contract Award to December 31, 2025						
Requirement	Initial Period (B) & (F)	Option Period 1 (J)	Option Period 2 (N)	Option Period 3 (R)	Option Period 4 (V)	Sub-Total Estimated Contract Cost (exclusive of GST/HST) (W = B + F + J + N + R + V)
Preventive and Corrective Maintenance Program for the Current Security System	(B) \$ _____ (F) \$ _____	\$ _____	\$ _____	\$ _____	\$ _____	\$ _____

***For evaluation purposes.**



ANNEX "B"
BASIS OF PAYMENT

1.1 INITIAL PERIOD

A- Contract Period (From contract award to December 31, 2021)

INITIAL PERIOD From Contract Award to December 31, 2021		
	Locations	Firm All-Inclusive Installation Fee
1	300 Park Street, Brockville, ON	\$ _____
2	163 Simcoe Street, Peterborough, ON	\$ _____
3	140 Renfrew Drive, Markham, ON	\$ _____
4	145 Renfrew Drive, Markham, ON	\$ _____
5	709 Main Street West, Hamilton, ON	\$ _____
6	60 Vanedward Drive, Port Perry, ON	\$ _____

INITIAL PERIOD From Contract Award to December 31 30, 2021				
	Locations	Number of Months	Firm All-Inclusive Monthly Maintenance Rate	Total Cost (Firm All-Inclusive Annual Maintenance Rate)
1	300 Park Street, Brockville, ON	12 months	\$ _____ / month	\$ _____
2	163 Simcoe Street, Peterborough, ON	12 months	\$ _____ / month	\$ _____
3	140 Renfrew Drive, Markham, ON	12 months	\$ _____ / month	\$ _____



4	145 Renfrew Drive, Markham, ON	12 months	\$ _____ / month	\$ _____
5	709 Main Street West, Hamilton, ON	12 months	\$ _____ / month	\$ _____
6	60 Vanedward Drive, Port Perry, ON	12 months	\$ _____ / month	\$ _____

1.2 OPTIONAL PERIODS

B- Option to Extend the Term of the Contract (From January 1, 2021 to December 31, 2025)

OPTION PERIOD 1 From January 1, 2021 to December 31, 2022				
	Locations	Number of Months	Firm All-Inclusive Monthly Maintenance Rate	Total Cost (Firm All-Inclusive Annual Maintenance Rate)
1	300 Park Street, Brockville, ON	12 months	\$ _____ / month	\$ _____
2	163 Simcoe Street, Peterborough, ON	12 months	\$ _____ / month	\$ _____
3	140 Renfrew Drive, Markham, ON	12 months	\$ _____ / month	\$ _____
4	145 Renfrew Drive, Markham, ON	12 months	\$ _____ / month	\$ _____
5	709 Main Street West, Hamilton, ON	12 months	\$ _____ / month	\$ _____
6	60 Vanedward Drive, Port Perry, ON	12 months	\$ _____ / month	\$ _____



OPTION PERIOD 2
From January 1, 2022 to December 31, 2023

	Locations	Number of Months	Firm All-Inclusive Monthly Maintenance Rate	Total Cost (Firm All-Inclusive Annual Maintenance Rate)
1	300 Park Street, Brockville, ON	12 months	\$ _____ / month	\$ _____
2	163 Simcoe Street, Peterborough, ON	12 months	\$ _____ / month	\$ _____
3	140 Renfrew Drive, Markham, ON	12 months	\$ _____ / month	\$ _____
4	145 Renfrew Drive, Markham, ON	12 months	\$ _____ / month	\$ _____
5	709 Main Street West, Hamilton, ON	12 months	\$ _____ / month	\$ _____
6	60 Vanedward Drive, Port Perry, ON	12 months	\$ _____ / month	\$ _____

OPTION PERIOD 3
From January 1, 2023 to December 31, 2024

	Locations	Number of Months	Firm All-Inclusive Monthly Maintenance Rate	Total Cost (Firm All-Inclusive Annual Maintenance Rate)
1	300 Park Street, Brockville, ON	12 months	\$ _____ / month	\$ _____
2	163 Simcoe Street, Peterborough, ON	12 months	\$ _____ / month	\$ _____
3	140 Renfrew Drive, Markham, ON	12 months	\$ _____ / month	\$ _____
4	145 Renfrew Drive, Markham, ON	12 months	\$ _____ / month	\$ _____



5	709 Main Street West, Hamilton, ON	12 months	\$ _____ / month	\$ _____
6	60 Vanedward Drive, Port Perry, ON	12 months	\$ _____ / month	\$ _____

OPTION PERIOD 4 From January 1, 2024 to December 31, 2025				
	Locations	Number of Months	Firm All-Inclusive Monthly Maintenance Rate	Total Cost (Firm All-Inclusive Annual Maintenance Rate)
1	300 Park Street, Brockville, ON	12 months	\$ _____ / month	\$ _____
2	163 Simcoe Street, Peterborough, ON	12 months	\$ _____ / month	\$ _____
3	140 Renfrew Drive, Markham, ON	12 months	\$ _____ / month	\$ _____
4	145 Renfrew Drive, Markham, ON	12 months	\$ _____ / month	\$ _____
5	709 Main Street West, Hamilton, ON	12 months	\$ _____ / month	\$ _____
6	60 Vanedward Drive, Port Perry, ON	12 months	\$ _____ / month	\$ _____