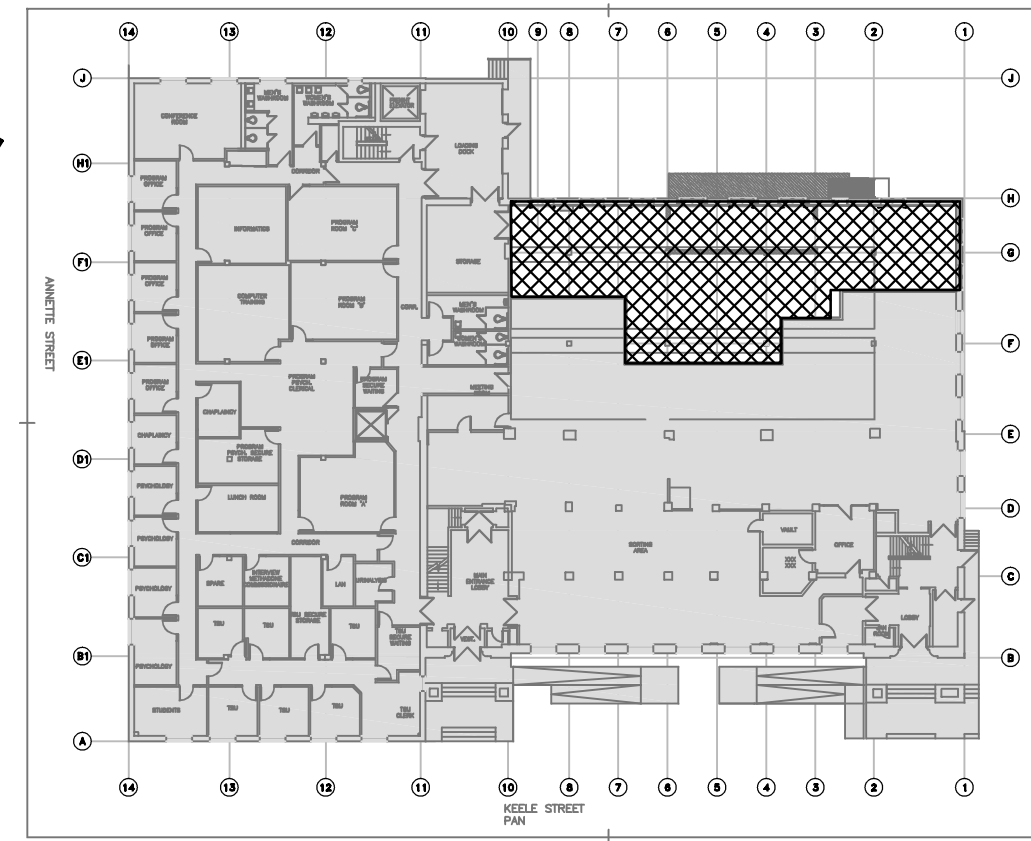
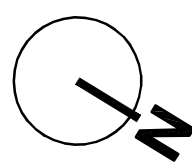


DIFFUSER SCHEDULE					
MARK	DESCRIPTION	MADE/MODEL	MATERIALS	FINISH	REMARKS
A	LOUVERED FACE SUPPLY GRILLE	E.H. PRICE: 510	ALUMINUM	B12	
B	LOUVERED FACE RETURN GRILLE	E.H. PRICE: 510Z	ALUMINUM	B12	0° DEFLECTION

RADIATOR HEATER SCHEDULE					
TYPE	HEIGHT (mm)	WIDTH (mm)	THICK (mm)	HEAT SURFACE (m²)	HEAT EMISSION (AT AVE. WATER T=76.7 °C) (W)
A	813	160	64	0.395	187

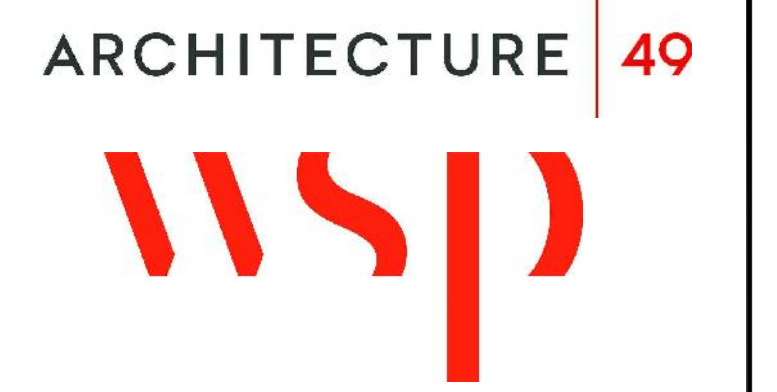
NEW CONSTRUCTION NOTES:

- EXISTING RADIATOR TO REMAIN.
- RELOCATED EXISTING RADIATORS. EXTEND EXISTING SUPPLY AND RETURN PIPING TO RELOCATED RADIATORS ACCORDINGLY.
- NEW CAST IRON RADIATORS TO MATCH EX. DIMENSION AND CAPACITY AS PER SCHEDULE. TYP. FOR 3. CONNECT NEW HEATING WATER PIPING FOR EACH RADIATOR AS PER DETAIL 1.
- BALANCE NEW RETURN AIR AND NEW SUPPLY AIR FLOWS AS SHOWN. APPLY ACOUSTICAL LINING IN 25mm THICKNESS ON NEW DUCTS IF EXISTING S/A & R/A MAINS CONNECTED TO ARE ACOUSTICALLY LINED.



KEY PLAN

Public Works and Government Services Canada
Travaux publics et Services gouvernementaux Canada



04	ISSUED FOR TENDER - R1	2018-10-03
03	ISSUED FOR TENDER	2018-03-14
02	99% CONSTRUCTION DOCUMENTS	2018-02-21
01	50% CONSTRUCTION DOCUMENTS	2018-02-09
revision		date

Do not scale drawings. Verify all dimensions and conditions on site and immediately notify the Departmental Representative of all discrepancies.

A	Detail No.
B	No. du détail
C	drawing no. - where detail required / dessin no. - où détail exigé
	drawing no. - where detailed / dessin no. - où détaillé

project title / titre du projet
TORONTO Ontario
PUBLIC WORKS GOVERNMENT SERVICE CANADA
330-338 KEELE ST.

drawing title / titre du dessin
LOADING DOCK NEW HVAC PLAN AND SCHEDULE

drawn by / dessiné par **P.P.**

designed by / conçu par **F.W.**

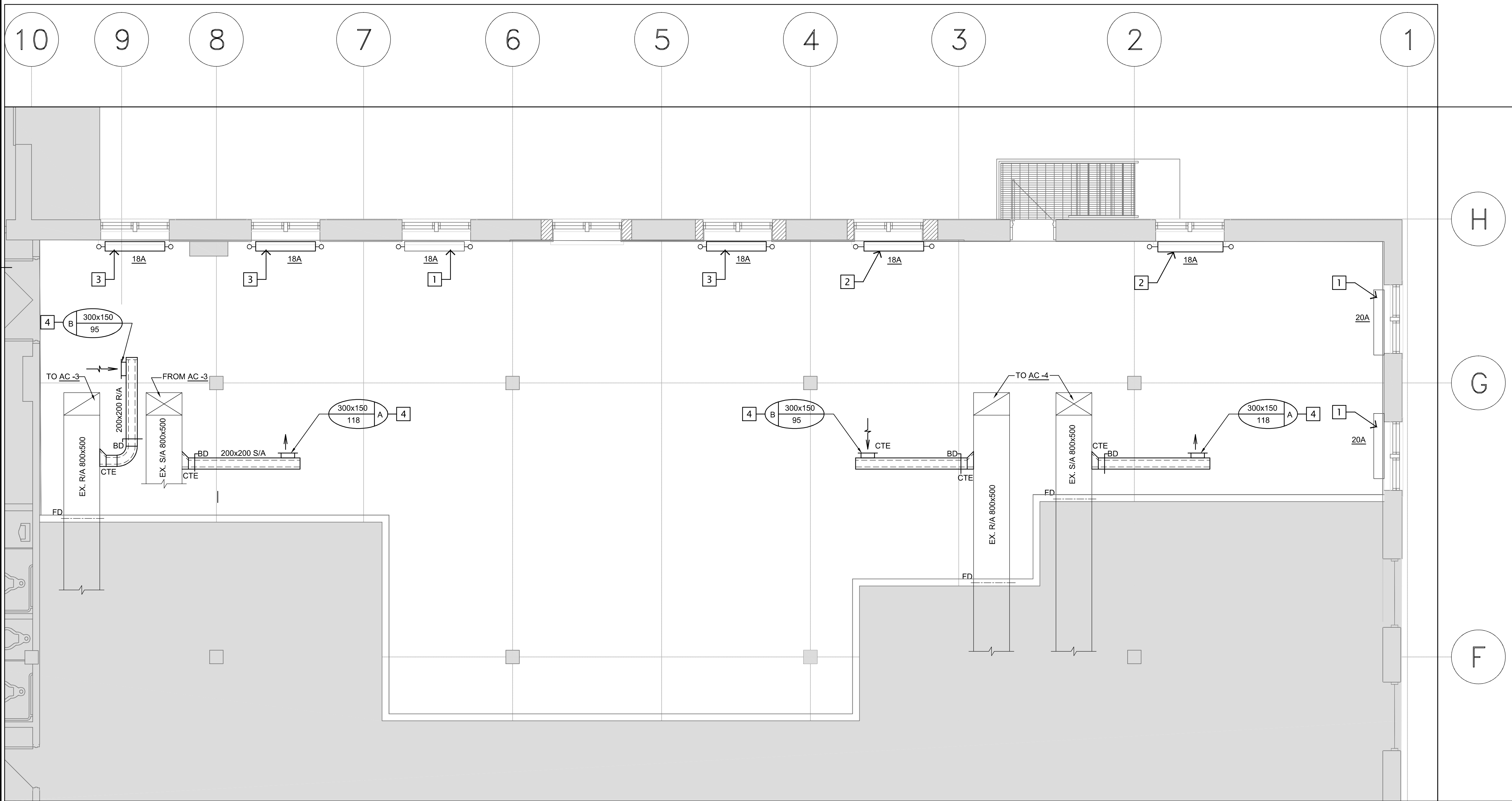
approved by / approuvé par

bid / offre project manager / administrateur de projets

project date / date du projet **2018-03-14**

project no. / no. du projet **R 083503.001**

drawing no. / dessiné no. **M1-102**



LOADING DOCK & OPEN SPACE NEW - HVAC PLAN

