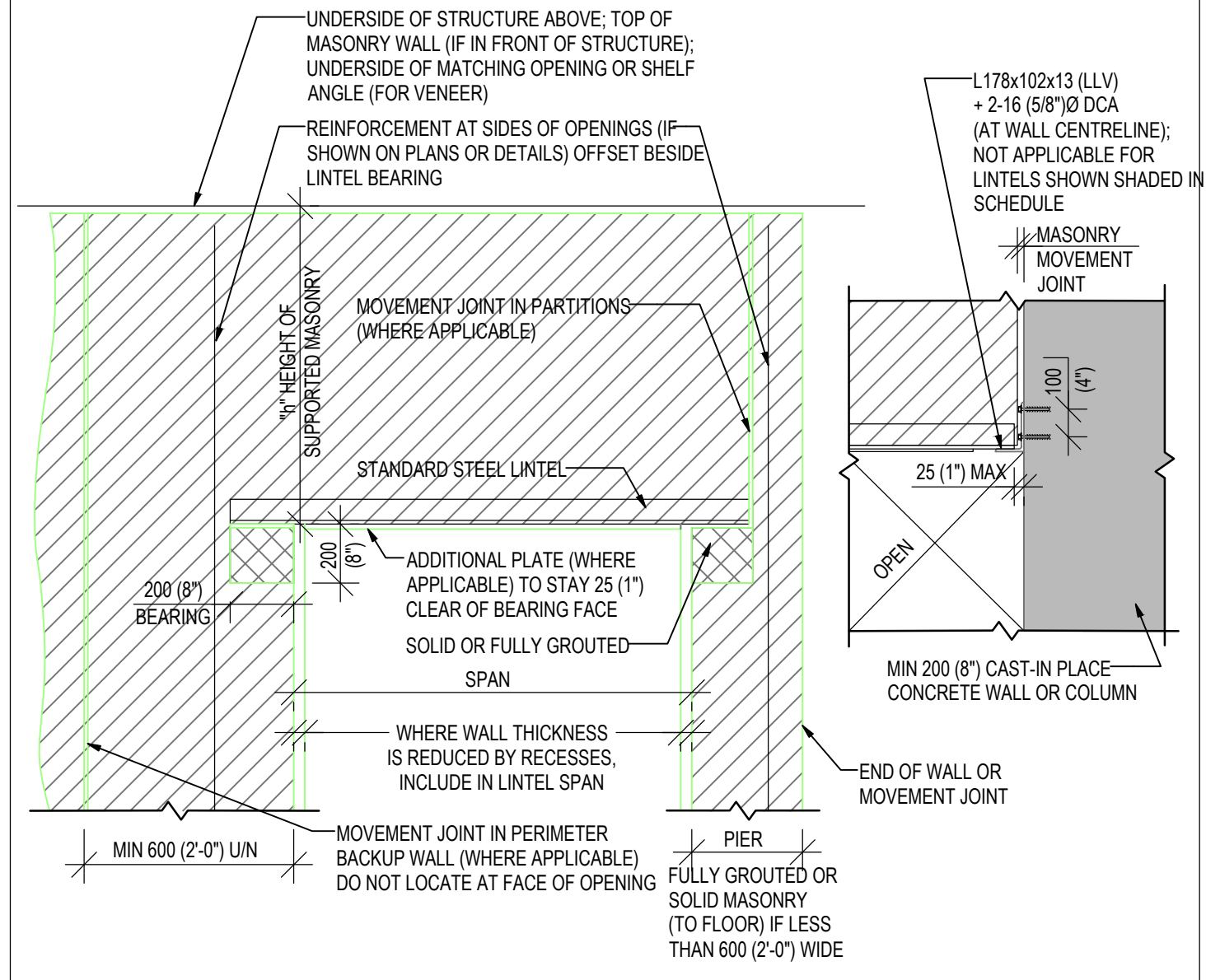


STANDARD STEEL LINTELS IN NON LOAD BEARING MASONRY WALLS

TM-WALL-11

- NOTES:
- THIS DETAIL APPLIES FOR HOLLOW MASONRY WALLS AND FOR MASONRY WALLS WITH GROUTED CORES SPACED NOT CLOSER THAN 800 (2'-8").
 - STANDARD LINTELS ARE NOT NECESSARILY SHOWN ON STRUCTURAL DRAWINGS, REFER TO ARCHITECTURAL, MECHANICAL AND ELECTRICAL DRAWINGS FOR OPENING LOCATIONS.
 - SEE PLANS FOR SPECIAL LINTELS.
 - CONNECT BACK TO BACK DOUBLE ANGLES USING MIN 16 (5/8") BOLTS @ 450 (1'-6") MAX. OR BY WELDING @ TOP & BOTTOM USING 6 (1/4") WELDS x 50 (2") LG @ 450 (1'-6") MAX. LOCATE FIRST CONNECTION MAX 75 (3") FROM END OF LINTEL.
 - PROVIDE STEEL PACKING AS REQUIRED TO ENSURE EVEN BEARING OF STEEL LINTELS.
 - FOR LINTELS WHICH ARE SHADED IN SCHEDULE, SPECIAL DETAIL FOR CONNECTION TO CONCRETE WALL/COLUMN IS REQUIRED.
 - FOR FIRE PROTECTIONS OF LINTELS LONGER THAN 3000 (10'-0"), SEE ARCHITECTURAL DRAWINGS AND SPECS.



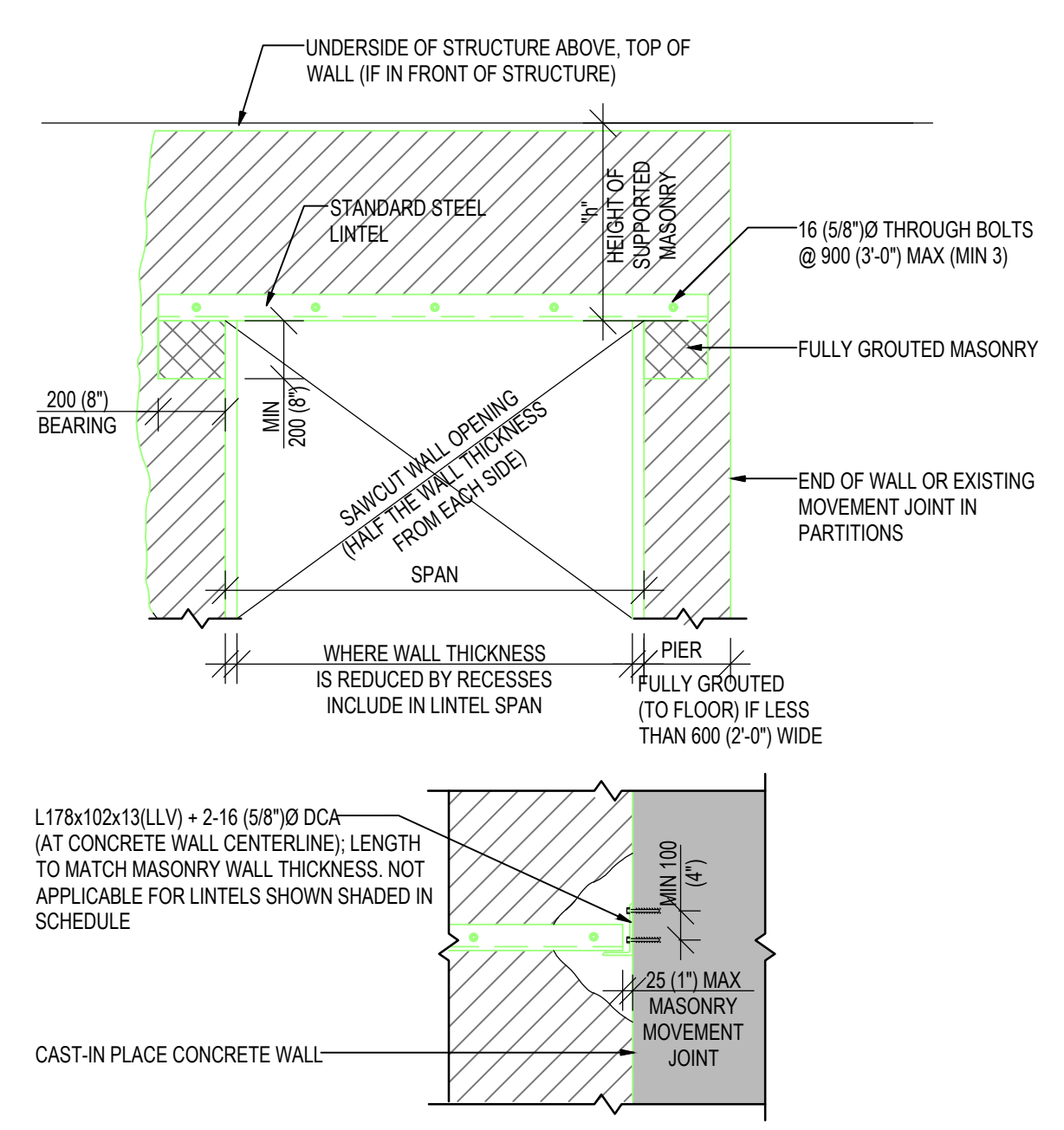
WALL THICKNESS	SPAN	HEIGHT OF SUPPORTED MASONRY "h"			DETAIL
		h ≤ 1200 (4'-0")	1200 (4'-0") < h ≤ 2600 (8'-4")	2600 (8'-4") < h ≤ 4800 (16'-0")	
90 (4") VENEER	UP TO 1200 (4'-0")	L89x89x6.4	L89x89x6.4	L89x64x7.9	
	1200 (4'-0") TO 1800 (6'-0")	L89x89x6.4	L89x89x6.4	L102x89x7.9	
	1800 (6'-0") TO 2400 (8'-0")	L89x89x6.4	L102x89x7.9	L152x89x7.9	
	2400 (8'-0") TO 3000 (10'-0")	L102x89x7.9	L152x89x7.9	L152x89x9.5 + PLATE	
	3000 (10'-0") TO 3600 (12'-0")	L127x89x7.9	L152x89x9.5 + PLATE	N/A	
140 (6")	UP TO 1200 (4'-0")	2-L64x64x6.4	2-L64x64x6.4	2-L64x64x6.4	
	1200 (4'-0") TO 1800 (6'-0")	2-L64x64x6.4	2-L76x64x7.9	2-L89x64x7.9	
	1800 (6'-0") TO 2400 (8'-0")	2-L76x64x7.9	2-L89x64x9.5 + PLATE	N/A	
	2400 (8'-0") TO 3000 (10'-0")	2-L89x64x9.5	N/A	N/A	
	3000 (10'-0") TO 3600 (12'-0")	2-L89x64x9.5 + PLATE	N/A	N/A	
190 (8")	UP TO 1200 (4'-0")	2-L89x89x6.4	2-L89x89x6.4	2-L89x89x6.4	
	1200 (4'-0") TO 1800 (6'-0")	2-L89x89x6.4	2-L89x89x6.4	2-L102x89x6.4	
	1800 (6'-0") TO 2400 (8'-0")	2-L89x89x6.4	2-L102x89x7.9	2-L127x89x7.9	
	2400 (8'-0") TO 3000 (10'-0")	2-L102x89x7.9	2-L152x89x7.9	2-L152x89x9.5	
	3000 (10'-0") TO 3600 (12'-0")	2-L127x89x7.9	2-L152x89x9.5	N/A	
240 (10")	UP TO 1200 (4'-0")	2-L102x102x6.4	2-L102x102x6.4	2-L102x102x6.4	
	1200 (4'-0") TO 1800 (6'-0")	2-L102x102x6.4	2-L102x102x6.4	2-L102x102x7.9	
	1800 (6'-0") TO 2400 (8'-0")	2-L102x102x6.4	2-L102x102x9.5	2-L152x102x7.9	
	2400 (8'-0") TO 3000 (10'-0")	2-L102x102x9.5	2-L152x102x7.9	2-L178x102x9.5	
	3000 (10'-0") TO 3600 (12'-0")	2-L152x102x7.9	2-L178x102x9.5	2-L178x102x9.5 + PLATE	
290 (12")	UP TO 1200 (4'-0")	3-L89x89x6.4	3-L89x89x6.4	3-L89x89x6.4	
	1200 (4'-0") TO 1800 (6'-0")	3-L89x89x6.4	3-L89x89x6.4	3-L102x89x6.4	
	1800 (6'-0") TO 2400 (8'-0")	3-L89x89x6.4	3-L127x89x6.4	3-L127x89x7.9	
	2400 (8'-0") TO 3000 (10'-0")	3-L127x89x6.4	3-L127x89x7.9	3-L152x89x9.5	
	3000 (10'-0") TO 3600 (12'-0")	3-L127x89x6.4	3-L152x89x9.5	N/A	

AUGUST 2017

STANDARD STEEL LINTELS IN EXISTING NON LOAD BEARING MASONRY WALLS

TM-WALL-14

- NOTES:
- THIS DETAIL APPLIES FOR HOLLOW MASONRY WALLS AND FOR MASONRY WALLS WITH GROUTED CORES SPACED NOT CLOSER THAN 800 (2'-8").
 - IF PREFERRED, TYPICAL DETAILS FOR LINTELS IN NEW WALLS CAN BE USED INSTEAD OF THIS DETAIL.
 - STANDARD LINTELS ARE NOT NECESSARILY SHOWN ON STRUCTURAL DRAWINGS, REFER TO ARCHITECTURAL, MECHANICAL AND ELECTRICAL DRAWINGS FOR OPENING LOCATIONS.
 - SEE PLANS FOR SPECIAL LINTELS.
 - IDENTIFY EXISTING MOVEMENT JOINTS. IF LOCATED LESS THAN 900 (3'-0") FROM FACE OF NEW OPENING NOTIFY THE CONSULTANT AND DO NOT CUT BEFORE RECEIVING FURTHER INSTRUCTIONS.
 - GROUT MASONRY AT SUPPORTS PRIOR TO LINTEL INSTALLATION.
 - PROVIDE STEEL PACKING AS REQUIRED TO PROVIDE EVEN BEARING OF STEEL LINTELS.
 - DESIGN AND PROVIDE TEMPORARY SHORING AS REQUIRED.
 - FOR LINTELS WHICH ARE SHADED IN SCHEDULE, SPECIAL DETAIL FOR CONNECTION TO CONCRETE WALL IS REQUIRED.
 - FOR FIRE PROTECTIONS OF LINTELS LONGER THAN 3000 (10'-0"), SEE ARCHITECTURAL DRAWINGS AND SPECS.

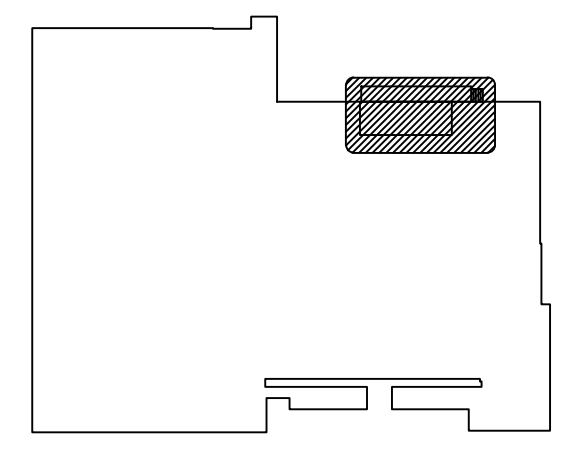


WALL THICKNESS	SPAN	HEIGHT OF SUPPORTED MASONRY "h"			DETAIL
		h ≤ 1200 (4'-0")	1200 (4'-0") < h ≤ 2600 (8'-4")	2600 (8'-4") < h ≤ 4800 (16'-0")	
140 (6")	UP TO 1200 (4'-0")	2-L64x64x6.4	2-L64x64x6.4	2-L64x64x6.4	
	1200 (4'-0") TO 1800 (6'-0")	2-L64x64x6.4	2-L76x64x7.9	L89x64x7.9	
	1800 (6'-0") TO 2400 (8'-0")	2-L76x64x7.9	N/A	N/A	
	2400 (8'-0") TO 3000 (10'-0")	2-L89x64x9.5	N/A	N/A	
	3000 (10'-0") TO 3600 (12'-0")	N/A	N/A	N/A	
190 (8")	UP TO 1200 (4'-0")	2-L89x89x6.4	2-L89x89x6.4	2-L89x89x6.4	
	1200 (4'-0") TO 1800 (6'-0")	2-L89x89x6.4	2-L89x89x6.4	2-L102x89x6.4	
	1800 (6'-0") TO 2400 (8'-0")	2-L89x89x6.4	2-L102x89x7.9	2-L127x89x7.9	
	2400 (8'-0") TO 3000 (10'-0")	2-L102x89x7.9	2-L152x89x7.9	2-L152x89x9.5	
	3000 (10'-0") TO 3600 (12'-0")	2-L127x89x7.9	2-L152x89x9.5	N/A	
240 (10")	UP TO 1200 (4'-0")	2-L102x102x6.4	2-L102x102x6.4	2-L102x102x6.4	
	1200 (4'-0") TO 1800 (6'-0")	2-L102x102x6.4	2-L102x102x6.4	2-L102x102x7.9	
	1800 (6'-0") TO 2400 (8'-0")	2-L102x102x6.4	2-L102x102x9.5	2-L152x102x7.9	
	2400 (8'-0") TO 3000 (10'-0")	2-L102x102x9.5	2-L152x102x7.9	2-L178x102x9.5	
	3000 (10'-0") TO 3600 (12'-0")	2-L152x102x7.9	2-L178x102x9.5	N/A	
290 (12")	UP TO 1200 (4'-0")	2-L152x152x6.4	2-L152x152x6.4	2-L152x152x6.4	
	1200 (4'-0") TO 1800 (6'-0")	2-L152x152x6.4	2-L152x152x6.4	2-L152x152x6.4	
	1800 (6'-0") TO 2400 (8'-0")	2-L152x152x6.4	2-L152x152x6.4	2-L152x152x6.4	
	2400 (8'-0") TO 3000 (10'-0")	2-L152x152x6.4	2-L152x152x6.4	N/A	
	3000 (10'-0") TO 3600 (12'-0")	2-L152x152x6.4	2-L152x152x9.5	N/A	

AUGUST 2017



© 2018 WSP GROUP
UNAUTHORIZED USE IS PROHIBITED
169-00323-00
WSP CANADA INC.
600 Cochrane Drive
Markham, ON L3R 6K3
TEL: (905) 475 7270
www.wsp.com



04	ISSUED FOR TENDER - R1	2018-10-03
03	ISSUED FOR TENDER	2018-03-14
02	99% CONSTRUCTION DOCUMENTS	2018-02-21
01	50% CONSTRUCTION DOCUMENTS	2018-02-09
revision		date

Do not scale drawings. Verify all dimensions and conditions on site and immediately notify the Departmental Representative of all discrepancies.

A B C	A	Detail No.
	B	No. du détail
	C	drawing no. - where detail required dessin no. - où détail exigé

project title
titre du projet
TORONTO Ontario
PUBLIC WORKS GOVERNMENT
SERVICE CANADA
330-338 KEELE ST.

drawing title
titre du dessin
TYPICAL DETAILS

drawn by
dessiné par
Jorge Inaudi

designed by
conc par
Kari Vali

approved by
approuvé par

bid
offre

project manager
administrateur de projets

project date
date du projet
2018-03-14

project no.
no. du projet
169-00323-01
PWGSC# R.083503.001

drawing no.
dessiné no.
S102