



RETURN BIDS TO:

RETOURNER LES SOUMISSIONS À:

Bid Receiving - PWGSC / Réception des soumissions -
TPSGC

11 LaurierSt./ 11, rue Laurier

Place du Portage, Phase III

Core 0B2 / Noyau 0B2

Gatineau

Québec

K1A 0S5

Bid Fax: (819) 997-9776

SOLICITATION AMENDMENT MODIFICATION DE L'INVITATION

The referenced document is hereby revised; unless otherwise indicated, all other terms and conditions of the Solicitation remain the same.

Ce document est par la présente révisé; sauf indication contraire, les modalités de l'invitation demeurent les mêmes.

Comments - Commentaires

This document contains a security requirement.

Vendor/Firm Name and Address

Raison sociale et adresse du
fournisseur/de l'entrepreneur

Issuing Office - Bureau de distribution

Infrastructure Maintenance and Solution Services
Division (FK)

L'Esplanade Laurier,

East Tower 4th Floor

L'Esplanade Laurier,

Tour est 4e étage

140 O'Connor, Street

Ottawa

Ontario

K1A 0R5

Title - Sujet Non-hazardous solid waste Non-hazardous solid waste collection	
Solicitation No. - N° de l'invitation EP913-211635/A	Amendment No. - N° modif. 001
Client Reference No. - N° de référence du client 20211635	Date 2021-03-03
GETS Reference No. - N° de référence de SEAG PW-\$\$FK-305-79791	
File No. - N° de dossier fk305.EP913-211635	CCC No./N° CCC - FMS No./N° VME
Solicitation Closes - L'invitation prend fin at - à 02:00 PM Eastern Daylight Saving Time EDT on - le 2021-04-13 Heure Avancée de l'Est HAE	
F.O.B. - F.A.B. Plant-Usine: <input type="checkbox"/> Destination: <input type="checkbox"/> Other-Autre: <input type="checkbox"/>	
Address Enquiries to: - Adresser toutes questions à: Rosso, Francois	Buyer Id - Id de l'acheteur fk305
Telephone No. - N° de téléphone (613) 297-1315 ()	FAX No. - N° de FAX () -
Destination - of Goods, Services, and Construction: Destination - des biens, services et construction:	

Instructions: See Herein

Instructions: Voir aux présentes

Delivery Required - Livraison exigée	Delivery Offered - Livraison proposée
Vendor/Firm Name and Address Raison sociale et adresse du fournisseur/de l'entrepreneur	
Telephone No. - N° de téléphone Facsimile No. - N° de télécopieur	
Name and title of person authorized to sign on behalf of Vendor/Firm (type or print) Nom et titre de la personne autorisée à signer au nom du fournisseur/ de l'entrepreneur (taper ou écrire en caractères d'imprimerie)	
Signature	Date

Solicitation amendment 001 is raised to add Annex F to solicitation (see attached).

No other changes apply

Annex F: Maps and Pictures

Note that photos and maps provided herein are for additional reference only and Annex B is to be considered the authoritative site list

Table of Contents

Group 1 Photos and Maps	2
Figure 1: Agriculture and Agri-Food Canada (AAFC) - Central Experimental Farm: map with locations of all the bins.	2
Figure 2: Canadian Food Inspection Agency (CFIA) - 3851 Fallowfield Road, Ottawa: site map with locations of bins	3
Figure 3A: Health Canada, RPB building, 775 Brookfield Road, Ottawa: site plan with bin location	3
Figure 3B: Health Canada, RPB building, 775 Brookfield Road, Ottawa: picture of loading dock	4
Figure 3C: Health Canada, Sir Frederick Banting Building, 251 Sir Frederick Banting Driveway, Tunney's Pasture: site plan with bin location	5
Figure 3D: LCDC building, 100 Eglantine Driveway, Tunney's Pasture: site plan with bin location	5
Figure 3E: OHU Building, 51 Chardon Driveway, Tunney's Pasture: site plan with bin location	6
Figure 4: Environment Canada – Environmental Science and Technology Centre, Bogue Building, 335 River Road, Ottawa, Ontario: site plan with bins locations	6
Figure 5A: Parliamentary Precinct: maps of all sites with bins locations (loadings docks or pick-up sites) labelled.....	7
Figure 5B: Parliamentary Precinct, Warehouse, 3020 Hawthorne Road, Ottawa: bins locations and photos	7
Figure 5C: Parliamentary Precinct, 2086 Walkley Road, Ottawa: bins locations and loading dock photos	8
Figure 5D: Parliamentary Precinct, 2455 Don Reid Road, Ottawa: Pick up location	9
Figure 5E: Parliamentary Precinct, Food Production Facility, 1170 Algoma Rd., Ottawa: loading dock	9
Figure 5F: SCB Senate of Canada Building, 2 Rideau Street Ottawa, Ontario: loading dock	10
Figure 5G: Parliamentary Precinct - House of Commons, Parliament Hill, 111 Wellington Street, West Block (Temporary Loading Dock), Ottawa: photos of bins	10
Figure 5H: Parliamentary Precinct - Blackburn / Langevin Block 85 Sparks St., 80 Wellington St., Ottawa: photos of bins	11
Figure 6A: Transport Canada – Bldg. T58 (Hanger), 200 Comet Pvt., Ottawa, Ontario and Aircraft Services Training Centre, Bldg. # O-276, 20 Airbus Pvt., Ottawa: map with bin locations	12
Figure 6B: Transport Canada – Bldg. T58 (Hanger), 200 Comet Pvt., Ottawa, Ontario (top) and Aircraft Services Training Centre, Bldg. # O-276, 20 Airbus Pvt., Ottawa (bottom): photos of bins locations.....	12
Figure 6C: Transport Canada 80 Noel Street, Gatineau: a site plan showing where the garbage/recycling truck should go for the pick-up of garbage, paper and MMR including where to find the intercom and where the bins are located.....	13
Figure 7: Public Services and Procurement Canada - 1010 Somerset Street, Ottawa: map with bin location.....	14
Figure 8: Finance Building (Sakto) - 2745 Iris, Ottawa, Ontario: map with bin location	14
Figure 9: Passport Canada – 22 Varenne, Gatineau: map with bins location	15
Group 2 Container Location Map	16
Hyperlink 1. Non-Hazardous Waste and Recycling Map	16

Group 1 Photos and Maps

Figure 1: Agriculture and Agri-Food Canada (AAFC) - Central Experimental Farm: map with locations of all the bins.



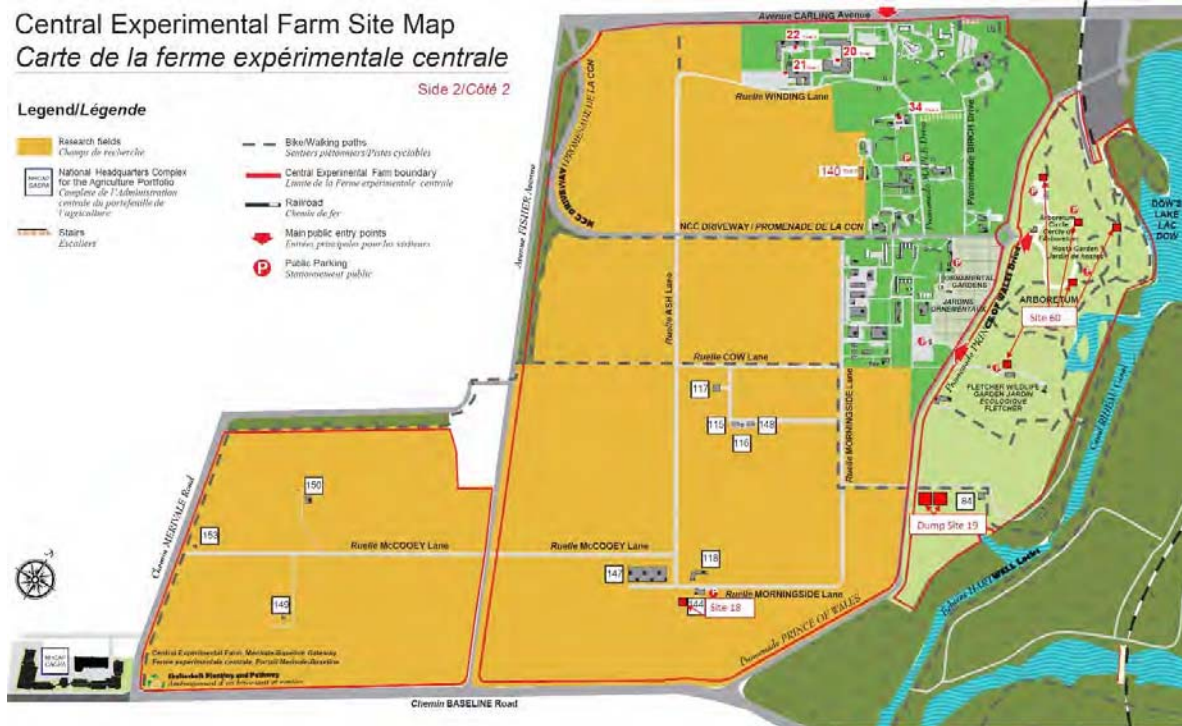


Figure 2: Canadian Food Inspection Agency (CFIA) - 3851 Fallowfield Road, Ottawa: site map with locations of bins

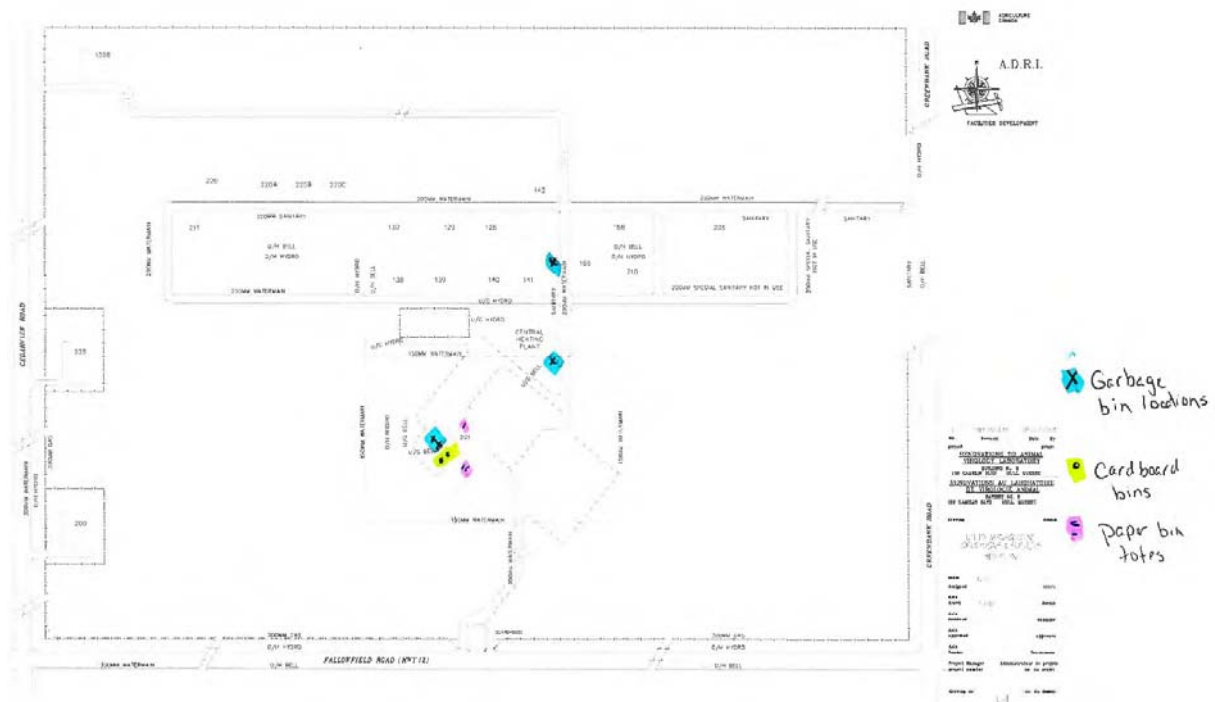


Figure 3A: Health Canada, RPB building, 775 Brookfield Road, Ottawa: site plan with bin location

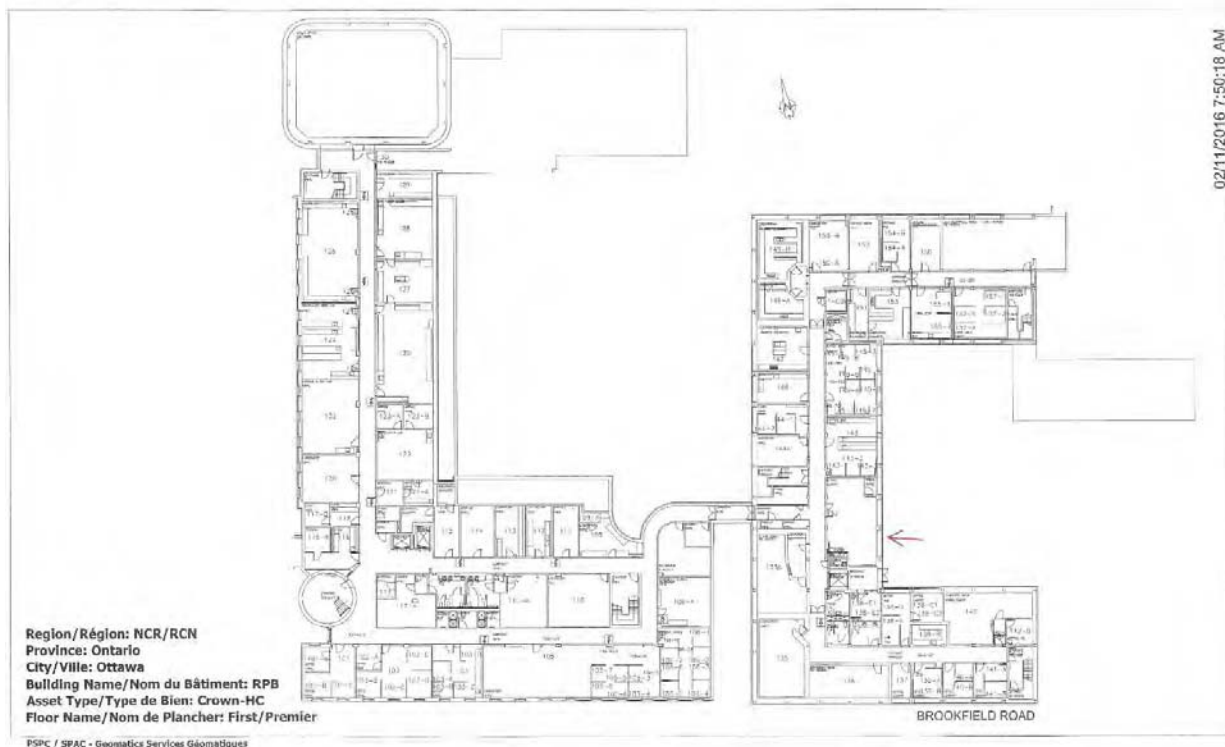


Figure 3B: Health Canada, RPB building, 775 Brookfield Road, Ottawa: picture of loading dock



Description: on the far left you will see a set of double doors - this is where the pick-up will take place. To the right of these double doors is a single, lime-coloured door. It has a buzzer/intercom. The driver pushes the button to gain access. The driver climbs a set of stairs and turns left to access the loading dock area with various recyclables. The garbage bin is outside located near the recycle dock.

Figure 3C: Health Canada, Sir Frederick Banting Building, 251 Sir Frederick Banting Driveway, Tunney's Pasture: site plan with bin location

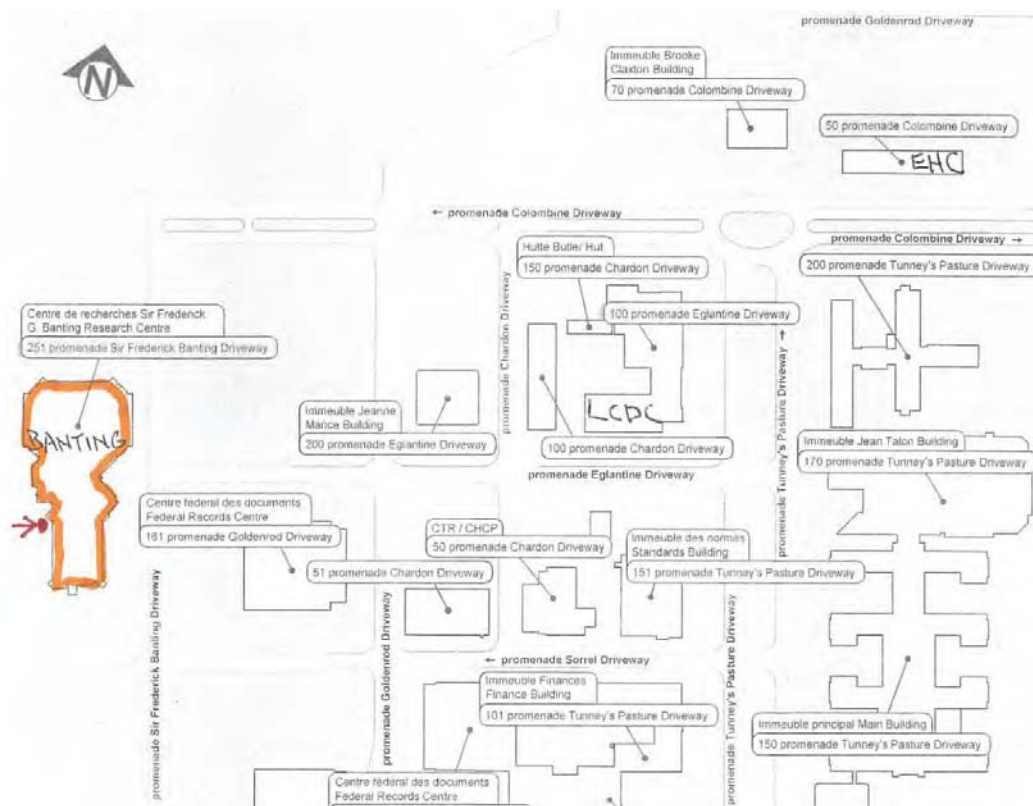


Figure 3D: LCDC building, 100 Eglantine Driveway, Tunney's Pasture: site plan with bin location

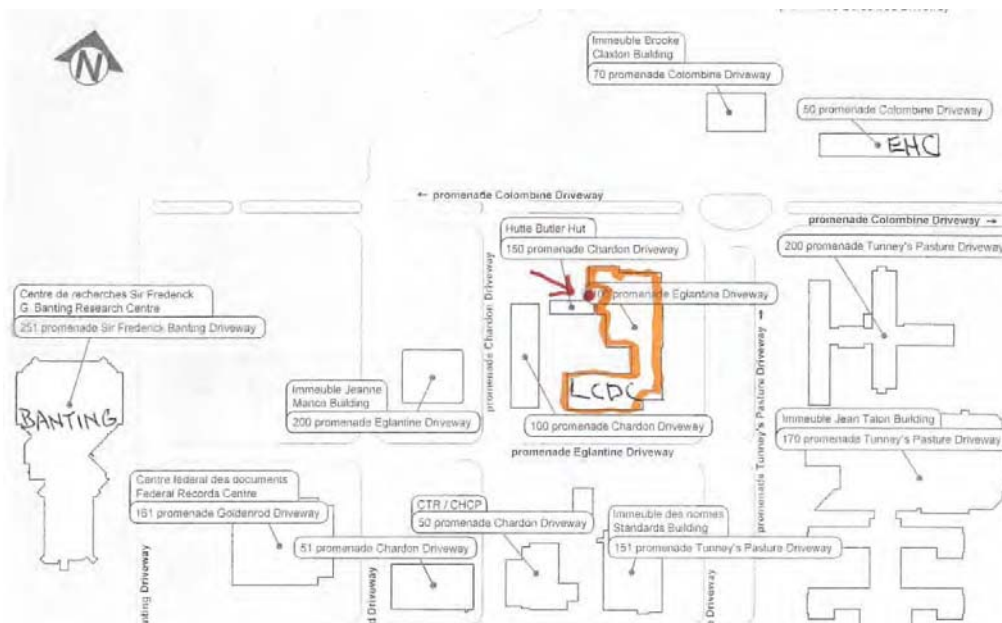


Figure 3E: OHU Building, 51 Chardon Driveway, Tunney's Pasture: site plan with bin location

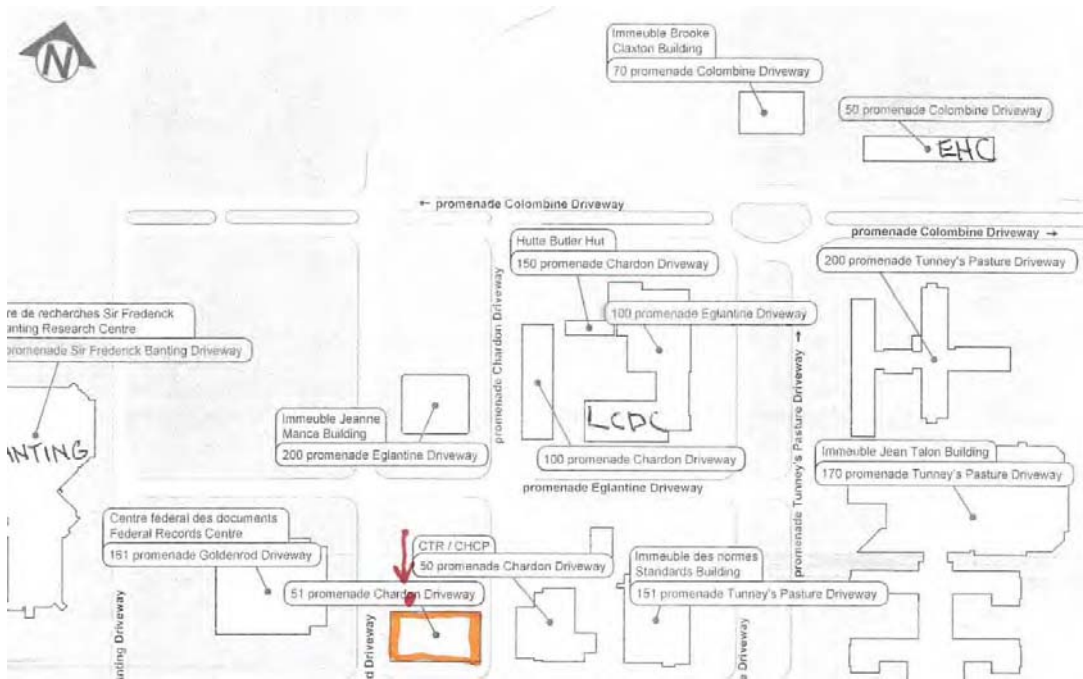


Figure 4: Environment Canada – Environmental Science and Technology Centre, Bogue Building, 335 River Road, Ottawa, Ontario: site plan with bins locations

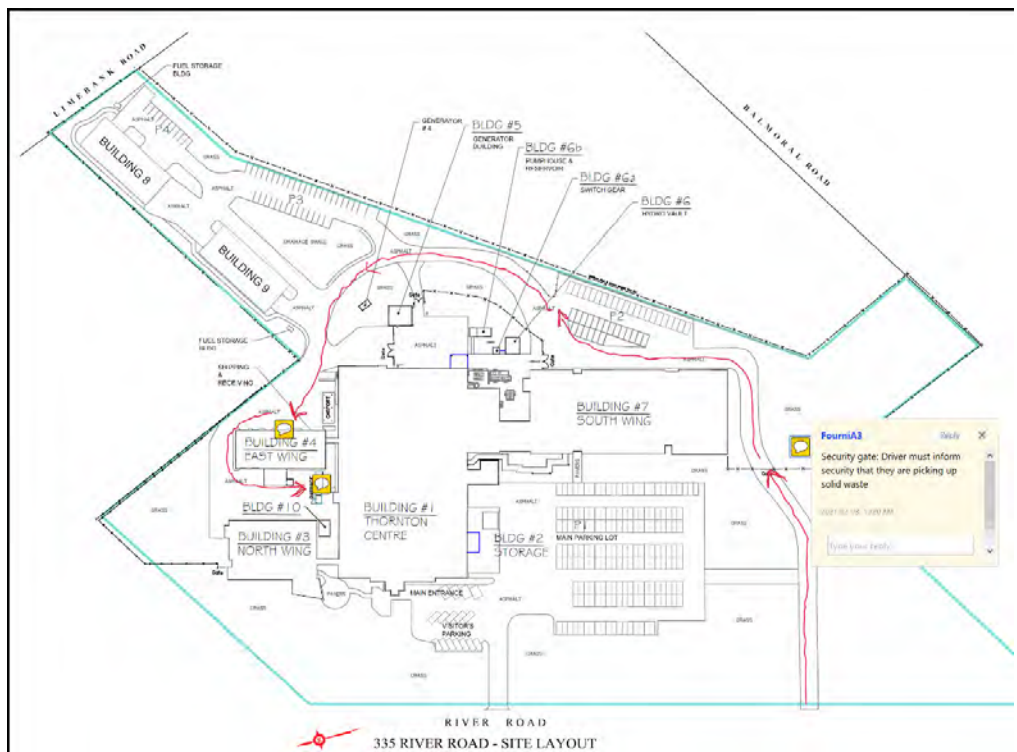


Figure 5A: Parliamentary Precinct: maps of all sites with bins locations (loadings docks or pick-up sites) labelled.

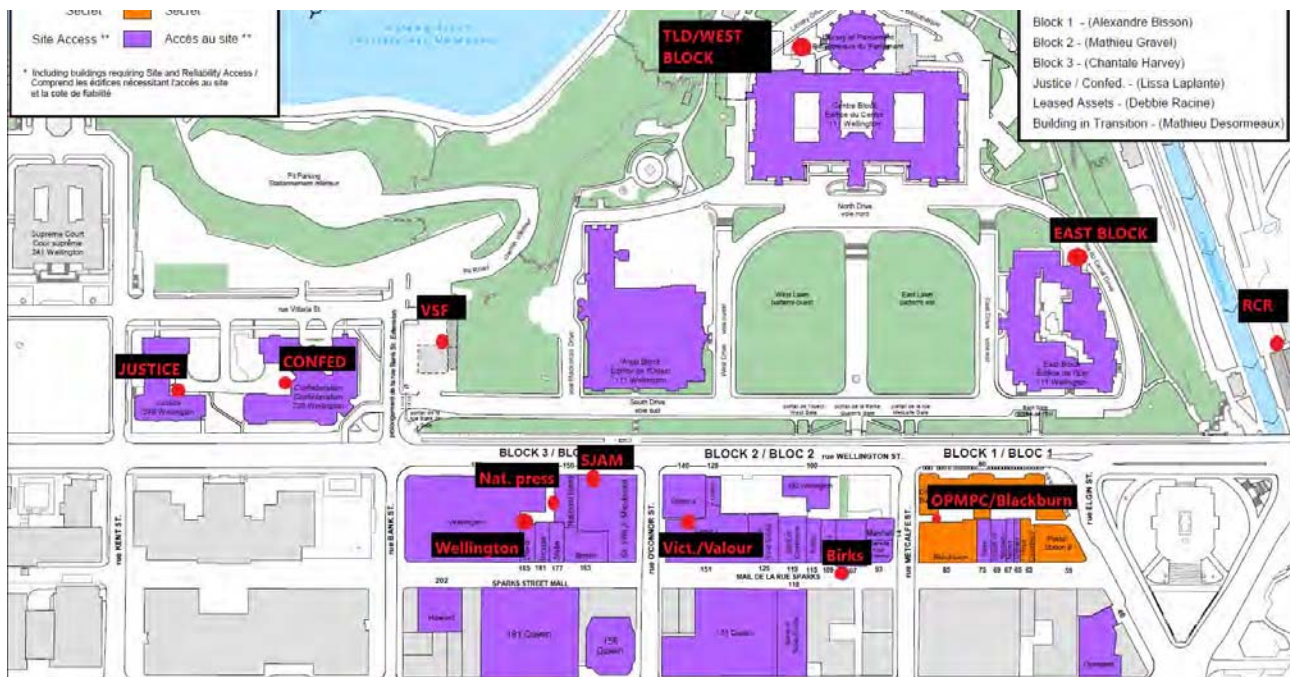


Figure 5B: Parliamentary Precinct, Warehouse, 3020 Hawthorne Road, Ottawa: bins locations and photos





Figure 5C: Parliamentary Precinct, 2086 Walkley Road, Ottawa: bins locations and loading dock photos

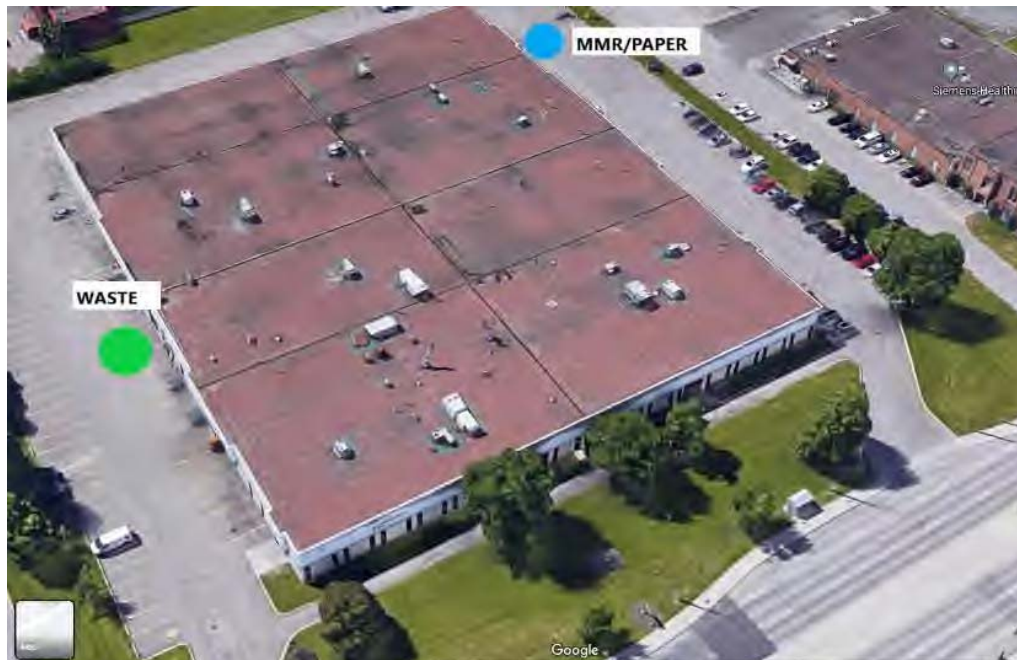




Figure 5D: Parliamentary Precinct, 2455 Don Reid Road, Ottawa: Pick up location



Figure 5E: Parliamentary Precinct, Food Production Facility, 1170 Algoma Rd., Ottawa: loading dock



Figure 5F: SCB Senate of Canada Building, 2 Rideau Street Ottawa, Ontario: loading dock

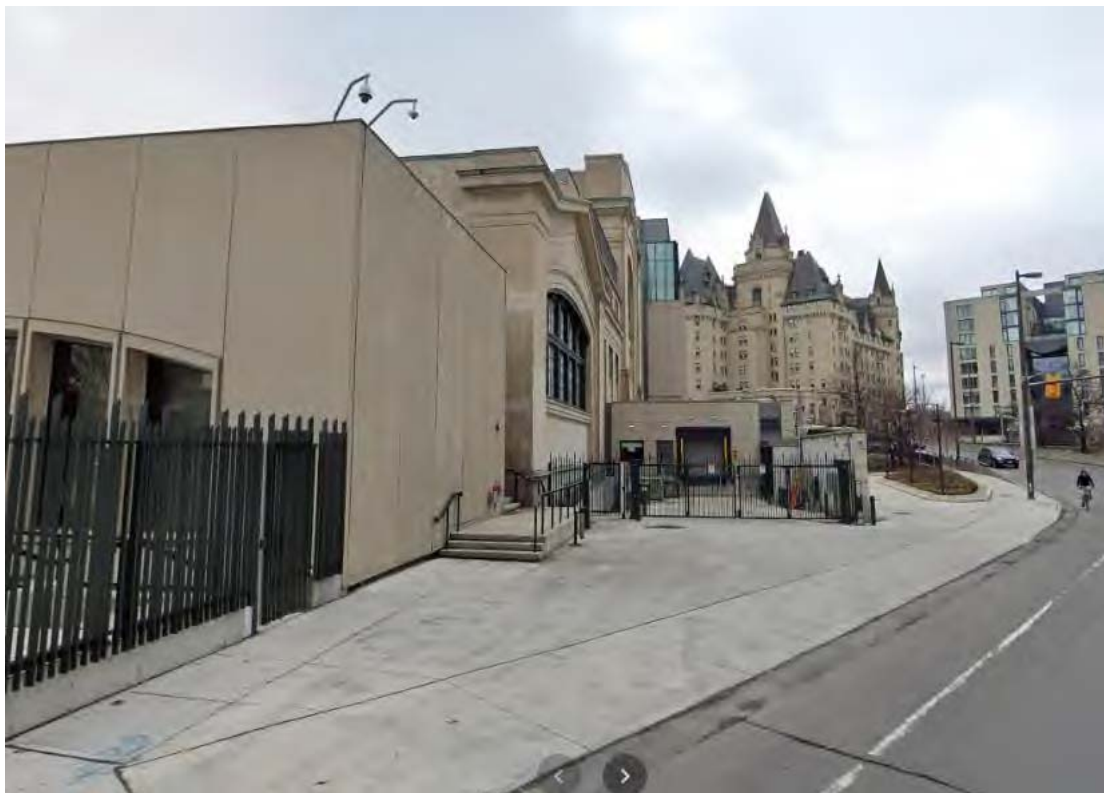


Figure 5G: Parliamentary Precinct - House of Commons, Parliament Hill, 111 Wellington Street, West Block (Temporary Loading Dock), Ottawa: photos of bins





Figure 5H: Parliamentary Precinct - Blackburn / Langevin Block 85 Sparks St., 80 Wellington St., Ottawa: photos of bins



Figure 6A: Transport Canada – Bldg. T58 (Hanger), 200 Comet Pvt., Ottawa, Ontario and Aircraft Services Training Centre, Bldg. # O-276, 20 Airbus Pvt., Ottawa: map with bin locations



Figure 6B: Transport Canada – Bldg. T58 (Hanger), 200 Comet Pvt., Ottawa, Ontario (top) and Aircraft Services Training Centre, Bldg. # O-276, 20 Airbus Pvt., Ottawa (bottom): photos of bins locations





Figure 6C: Transport Canada 80 Noel Street, Gatineau: a site plan showing where the garbage/recycling truck should go for the pick-up of garbage, paper and MMR including where to find the intercom and where the bins are located

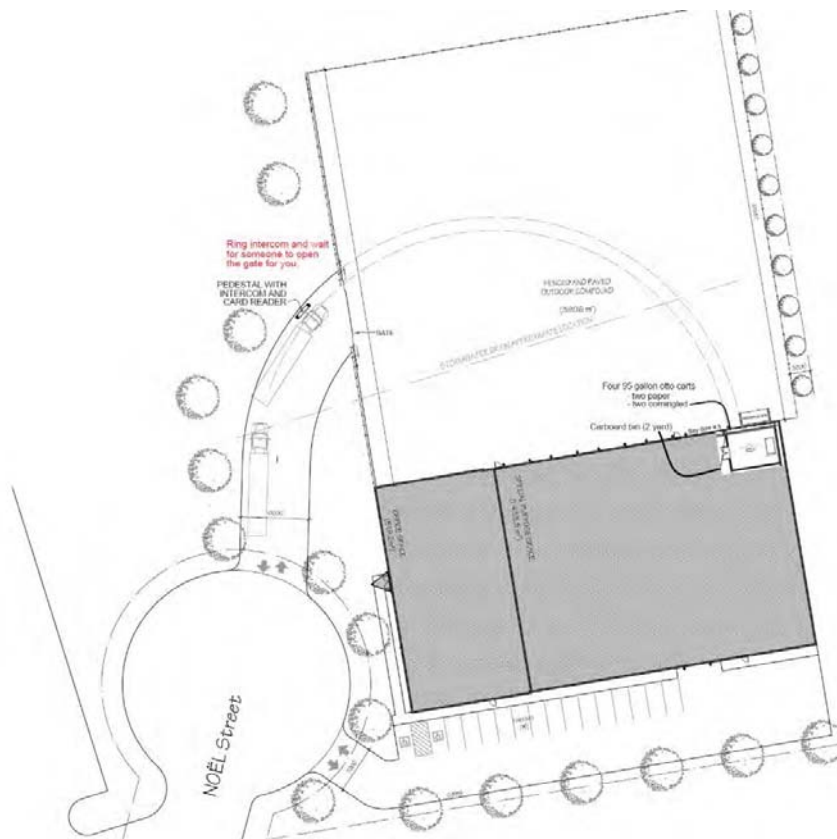


Figure 7: Public Services and Procurement Canada - 1010 Somerset Street, Ottawa: map with bin location



Figure 8: Finance Building (Sakto) - 2745 Iris, Ottawa, Ontario: map with bin location

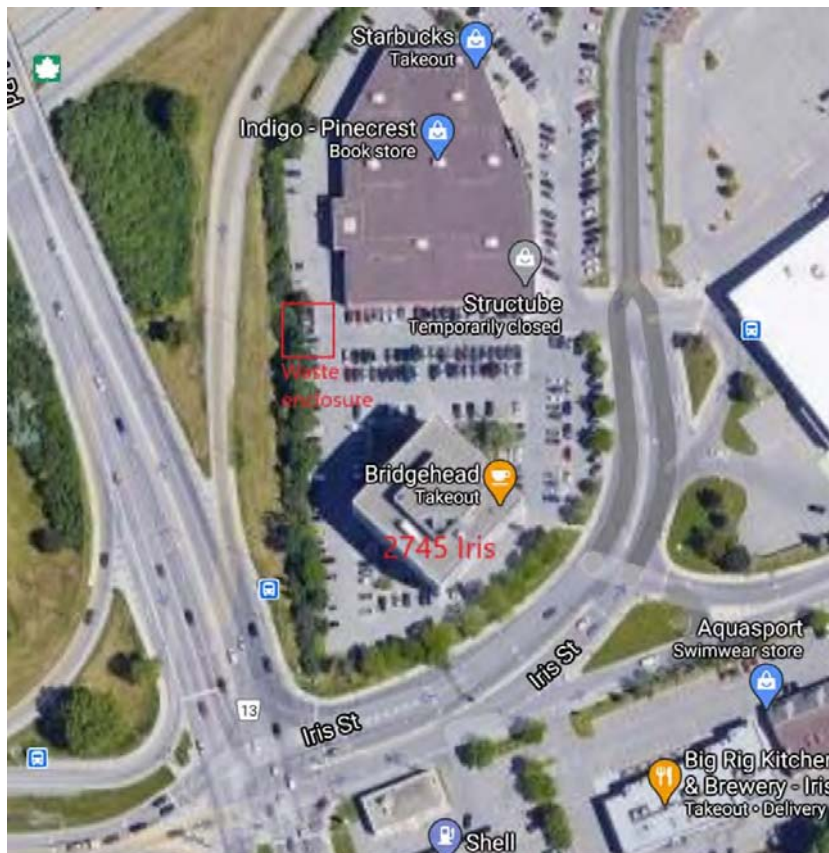


Figure 9: Passport Canada – 22 Varenne, Gatineau: map with bins location



Group 2 Container Location Map

Hyperlink 1. Non-Hazardous Waste and Recycling Map

https://www.google.com/maps/d/edit?mid=1nvQhcwxzjG7y0ZUqK_sDntp2olb8ZPVv&usp=sharing

Note that historical site account numbers and descriptions in the above link are for reference only and are not intended to be carried forward to this contract.