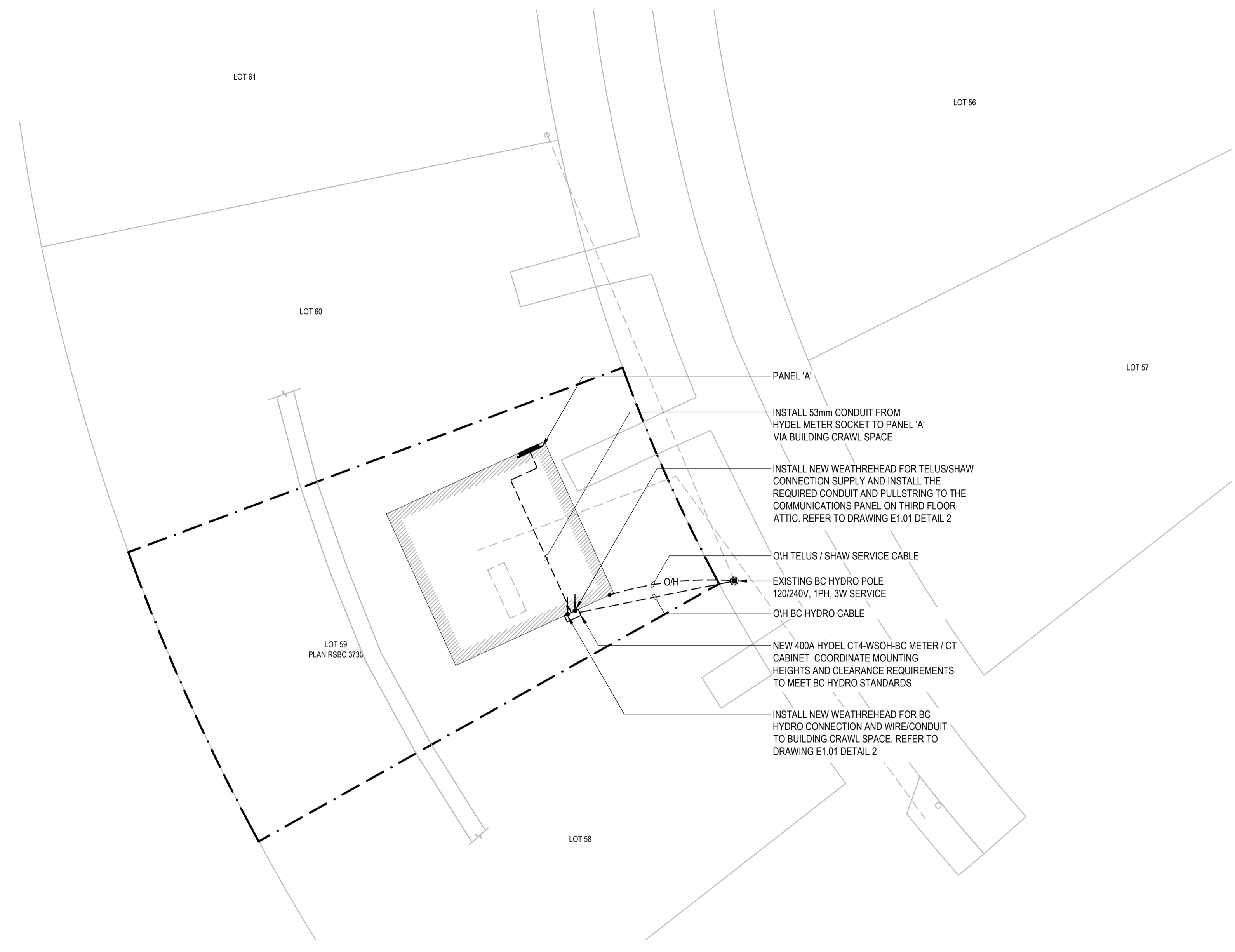




AES PROJECT #1-19-030

**ELECTRICAL SYMBOL LEGEND**

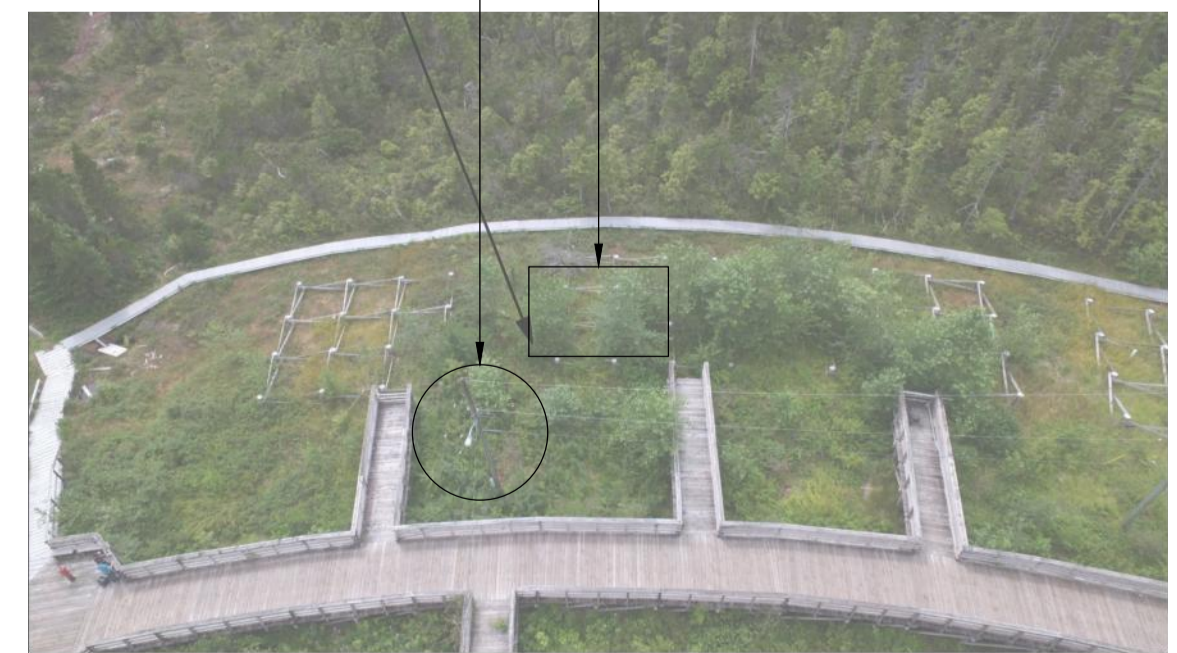
ABBREVIATIONS	
WP	DENOTES WEATHER PROOF DEVICE
RI	ROUGH-IN ONLY
LIGHTING	
	CEILING RECESSED LUMINAIRE
	SURFACE MOUNTED LUMINAIRE
	RECESSED DOWN LIGHT
	WALL MOUNTED LUMINAIRE
	PENDANT LUMINAIRE
	SINGLE POLE TOGGLE SWITCH, GANGED AS SHOWN
	THREE WAY TOGGLE SWITCH
	SWITCH C/W VACANCY SENSOR
	TIMER SWITCH
	OCCUPANCY SENSOR, CEILING MOUNTED
	OCCUPANCY SENSOR, WALL MOUNTED
	DIMMER SWITCH
	EXIT SIGN - DIRECTION AS INDICATED ON PLANS
	DUAL HEAD EMERGENCY LIGHTING COMPLETE WITH SELF-CONTAINED BATTERY PACK, WALL MOUNTED
POWER	
	DUPLEX RECEPTACLE
	5-20R DUPLEX RECEPTACLE (T-SLOT)
	ABOVE COUNTER 5-20R DUPLEX RECEPT. (T-SLOT) GROUND FAULT CIRCUIT INTERRUPTER (GFCI)
	5-20R DUPLEX RECEPT. (T-SLOT) GROUND FAULT CIRCUIT INTERRUPTER (GFCI)
	ABOVE COUNTER GROUND FAULT CIRCUIT INTERRUPTER DUPLEX RECEPTACLE (GFCI)
	ABOVE COUNTER 5-20R DUPLEX RECEPT. (T-SLOT) GROUND FAULT CIRCUIT INTERRUPTER (GFCI)
	FRIDGE RECEPTACLE
	WASHER RECEPTACLE
	DRYER RECEPTACLE
	PANEL BOARD
	BASEBOARD HEATER
	JUNCTION BOX
	THERMOSTAT
	MECHANICAL EQUIPMENT CONNECTION
	MECHANICAL MOTOR CONNECTION
	DISCONNECT SWITCH
	CONDUIT RUN UP
	CONDUIT RUN DOWN
FIRE ALARM	
	120V SMOKE ALARM C/W BATTERY BACKUP
COMMUNICATIONS	
	CATV OUTLET
	COMBINATION TELEPHONE AND DATA OUTLET
SECURITY	
	MAGNETIC DOOR HOLD OPEN
	CARD READER
	ELECTRIC DOOR STRIKE
	DOOR CONTACT
	REQUEST TO EXIT SENSOR



**1 SITE PLAN**  
E1.00

- GENERAL NOTES:**
- COMMUNICATION: CONTRACTOR TO PROVIDE CONDUIT, BOXES, PULL STRING, MAST FOR SYSTEM INSTALLED BY OTHERS. COORDINATE WITH SAR DEPARTMENT. (TELUS / SHAW)
  - DOOR SECURITY: CONTRACTOR TO PROVIDE CONDUIT, BOXES AND FISH WIRE FOR SYSTEM. INSTALLATION BY OTHERS. COORDINATE WITH SAR DEPARTMENT.
  - SOLAR PANEL: SEE DRAWING 1/E3.00 FOR SOLAR PANEL LAYOUT AND PRODUCT SPECIFICATIONS. ELECTRICAL CONTRACTOR TO HIRE A CERTIFIED SOLAR PANEL INSTALLER FOR THE COMPLETE INSTALLATION.

BUILDING LOCATION  
EXISTING BC HYDRO POLE



**2 SITE PHOTOS**  
E1.00 NOT TO SCALE

Revision/Revision	Description/Description	Date/Date
3	ISSUED FOR TENDER	2021-02-01
2	ISSUED FOR 100% REVIEW	2021-01-12
1	ISSUED FOR 95% REVIEW	2020-10-23

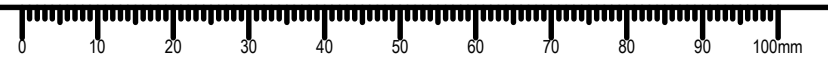
Client/Client  
**FISHERIES AND OCEANS, REAL PROPERTY, SAFETY AND SECURITY**  
VANCOUVER, BC  
219-800 BARRARD ST.

Project title/Titre du projet  
**HARTLEY BAY SAR RESIDENCE & SAR FLOAT SERVICES**  
HARTLEY BAY, B.C.

Consultant Signature Box Only  
Designed by/Concept par **BK**  
Drawn by/Dessine par **RS**  
PWGSC Project Manager/Administrateur de Projets TPSGC  
PWGSC Regional Manager, Architectural and Engineering Services / Gestionnaire régionale, Services d'architecture et de génie, TPSGC

Drawing title/Titre du dessin  
**SITE PLAN**

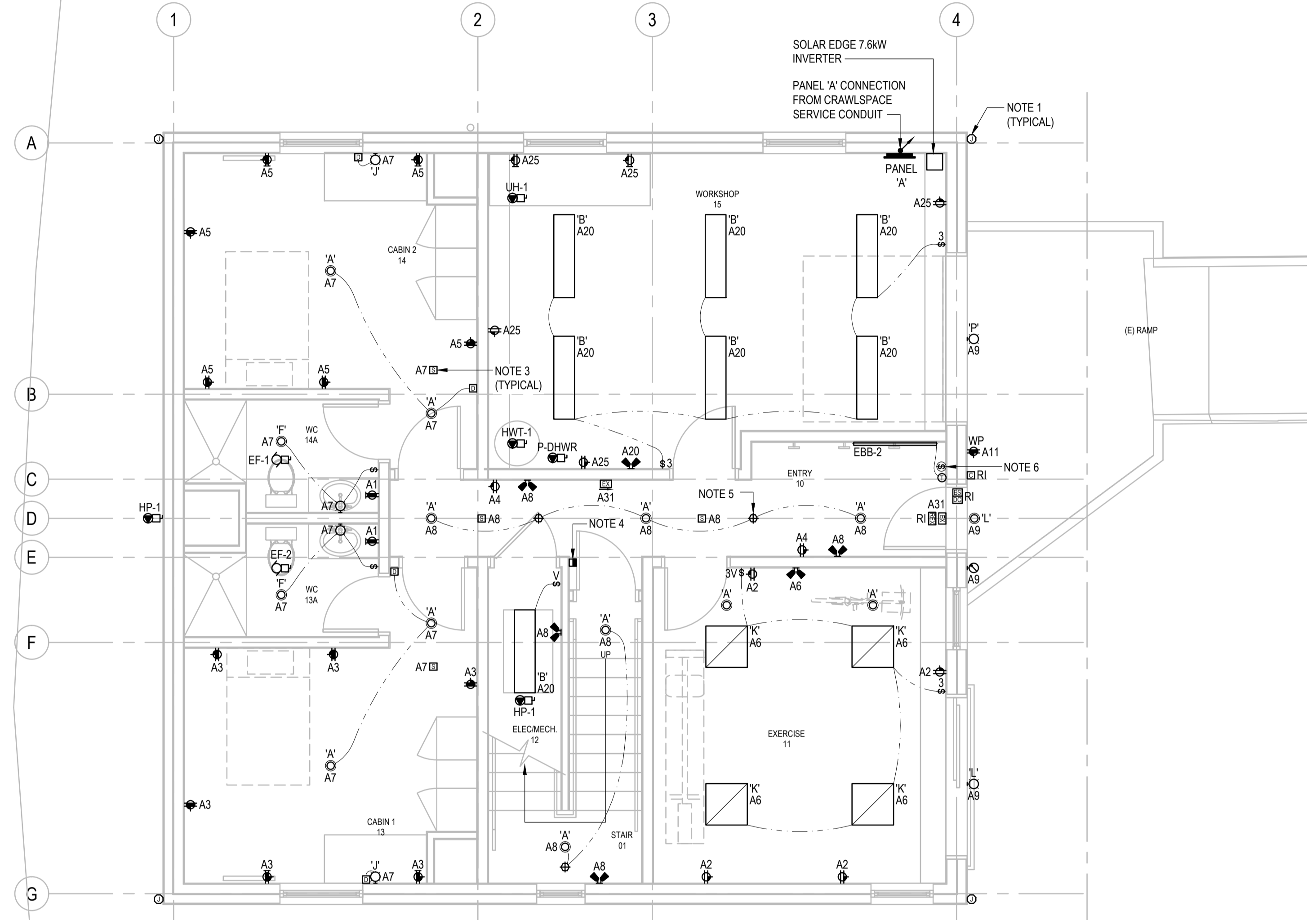
Project No./No. du projet	Sheet/ Feuille	Revision no./ La Révision no.
2018552	E1.00	3







AES PROJECT #1-19-030



1 FIRST FLOOR ELECTRICAL LAYOUT  
E2.00

- NOTES:
- SUPPLY AND INSTALL JUNCTION BOX AND 1" CONDUIT RUN AT TOP OF FIRST FLOOR EXTERIOR FOR FUTURE CCTV.
  - ALL CABIN RECEPTACLES TO BE ARC FAULT.
  - ALL SMOKE ALARMS TO BE INTERCONNECTED THROUGHOUT THE BUILDING AND CONNECTED TO MAGNETIC DOOR RELEASES VIA RELAYS.
  - DOORS TO RELEASE WHEN RELAYS ACTIVATED FROM SMOKE ALARM ACTIVATION.
  - CORRIDOR LIGHTING TO BE 0-10V DIMMABLE. LIGHTS TO DIM DOWN TO 50% UPON NO OCCUPANCY FOR 20MINS AND BACK UP TO 100% UPON DETECTION OF OCCUPANCY.
  - SUPPLY AND INSTALL LEVITON VPT24-1PZ FOR EXTERIOR LIGHT CONTROL. COORDINATE WITH THE CLIENT FOR PROGRAMMING TIMES.

Revision/Revision	Description/Description	Date/Date
3	ISSUED FOR TENDER	2021-02-01
2	ISSUED FOR 100% REVIEW	2021-01-12
1	ISSUED FOR 95% REVIEW	2020-10-23

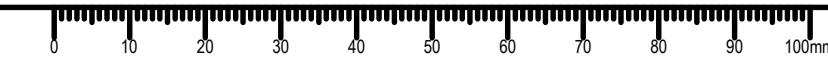
Client/Client  
**FISHERIES AND OCEANS,  
REAL PROPERTY,  
SAFETY AND SECURITY**  
  
VANCOUVER, BC  
219-800 BURRARD ST.

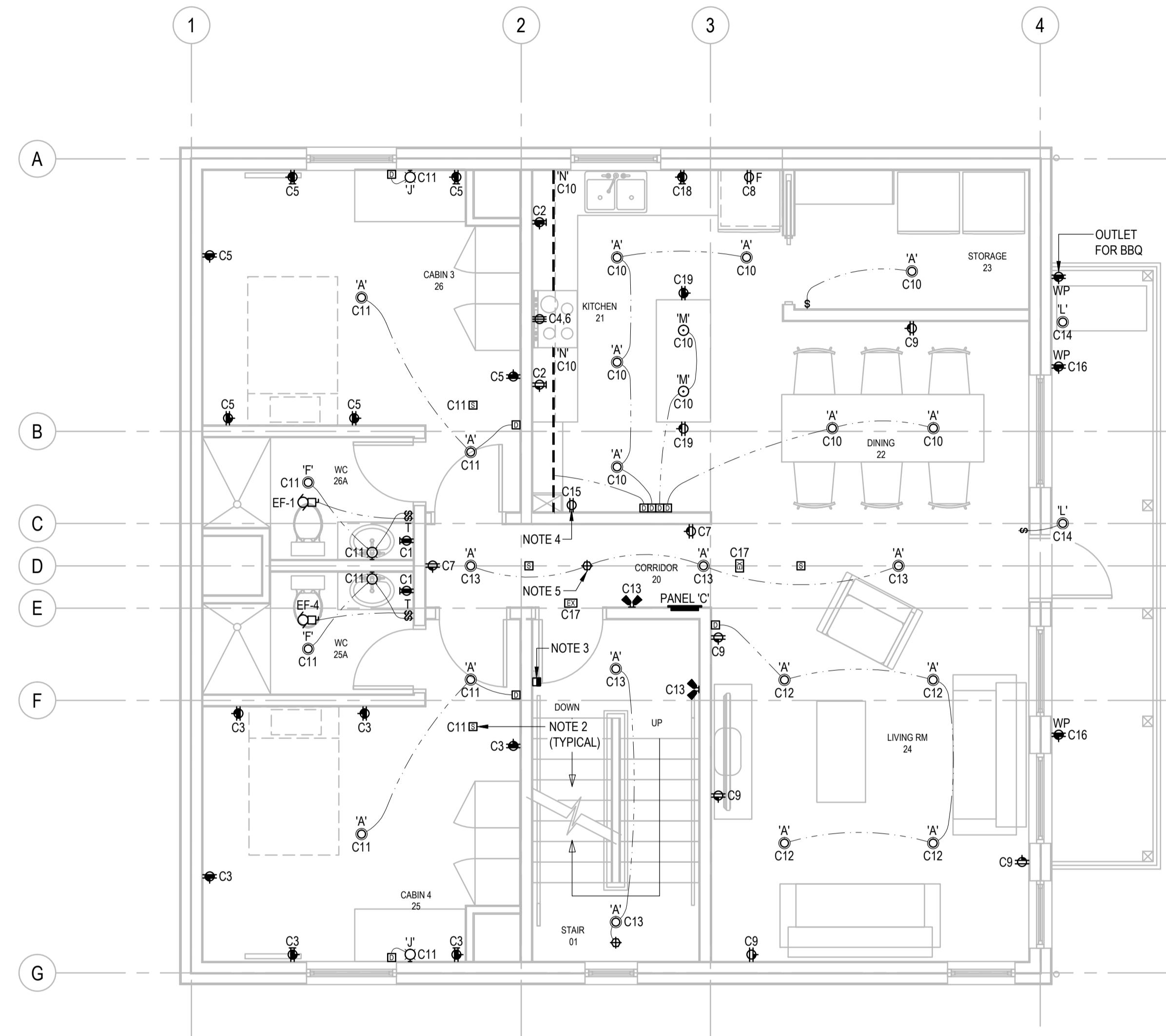
Project title/Titre du projet  
**HARTLEY BAY  
SAR RESIDENCE  
& SAR FLOAT  
SERVICES**  
  
HARTLEY BAY, B.C.

Consultant Signature Box Only  
  
Designed by/Concept par  
**BK**  
  
Drawn by/Dessiné par  
**RS**  
  
PWGSC Project Manager/Administrateur de Projets TPSGC  
--  
  
PWGSC Regional Manager, Architectural and Engineering Services/  
Gestionnaire régionale, Services d'architecture et de génie, TPSGC  
--

Drawing title/Titre du dessin  
**FIRST FLOOR  
ELECTRICAL LAYOUT**

Project No./No. du projet	Sheet/ Feuille	Revision no./ La Révision no.
2018552	E2.00	3





1 SECOND FLOOR ELECTRICAL LAYOUT  
E2.01

1:50

NOTES:

- ALL CABIN RECEPTACLES TO BE ARC FAULT.
- ALL SMOKE ALARMS TO BE INTERCONNECTED THROUGHOUT THE BUILDING AND CONNECTED TO MAGNETIC DOOR RELEASES VIA RELAYS.
- DOORS TO RELEASE WHEN RELAYS ACTIVATED FROM SMOKE ALARMS ACTIVATION.
- SUPPLY AND INSTALL ONE (1) 15A, 120V RECEPTACLE AT 4' UHF RADIO POWER.
- CORRIDOR LIGHTING TO BE 0-10V DIMMABLE. LIGHTS TO DIM DOWN TO 50% UPON NO OCCUPANCY FOR 20MINS AND BACK UP TO 100% UPON DETECTION OF OCCUPANCY.

3	ISSUED FOR TENDER	2021-02-01
2	ISSUED FOR 100% REVIEW	2021-01-12
1	ISSUED FOR 95% REVIEW	2020-10-23
Revision/ Revision	Description/Description	Date/Date

Client/Client  
**FISHERIES AND OCEANS,  
REAL PROPERTY,  
SAFETY AND SECURITY**  
  
VANCOUVER, BC  
219-800 BARRARD ST.

Project title/Titre du projet  
**HARTLEY BAY  
SAR RESIDENCE  
& SAR FLOAT  
SERVICES**  
  
HARTLEY BAY, B.C.

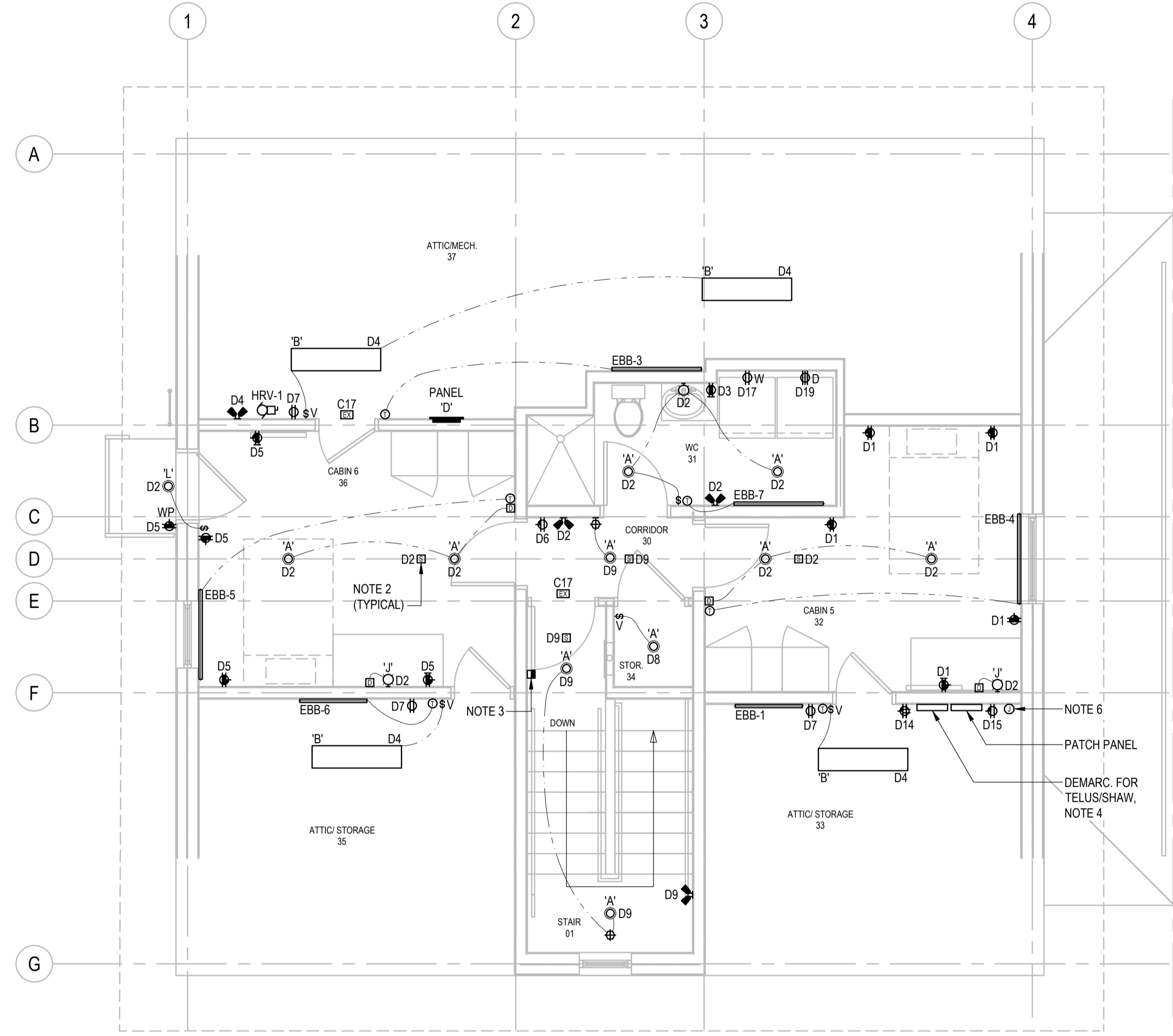
Consultant Signature Box Only  
  
Designed by/Concept par  
**BK**  
  
Drawn by/Dessine par  
**RS**  
  
PWGSC Project Manager/Administrateur de Projets TPSGC  
--  
  
PWGSC Regional Manager, Architectural and Engineering Services/  
Gestionnaire régionale, Services d'architecture et de génie, TPSGC  
--

Drawing title/Titre du dessin  
**SECOND FLOOR  
ELECTRICAL LAYOUT**

Project No./No. du projet <b>2018552</b>	Sheet/ Feuille <b>E2.01</b>	Revision no./ La Révision no. <b>3</b>
---	--------------------------------	---



AES PROJECT #1-19-030



1 THIRD FLOOR ELECTRICAL LAYOUT  
E2.02



NOTES:

- ALL CABIN RECEPTACLES TO BE ARC FAULT.
- ALL SMOKE ALARMS TO BE INTERCONNECTED THROUGHOUT THE BUILDING AND CONNECTED TO MAGNETIC DOOR RELEASES VIA RELAYS.
- DOORS TO RELEASE WHEN RELAYS ACTIVATED FROM SMOKE ALARMS ACTIVATION.
- TELUS/SHAW DEMARC. TO BE MOUNTED ON FIRE RESISTANT TREATED PLYWOOD, G1S, PAINTED WHITE WITH FIRE RETARDANT PAINT, DO NOT PAINT OVER LABELS.
- CORRIDOR LIGHTING TO BE 0-10V DIMMABLE. LIGHTS TO DIM DOWN TO 50% UPON NO OCCUPANCY FOR 20MINS AND BACK UP TO 100% UPON DETECTION OF OCCUPANCY.
- SUPPLY AND INSTALL A 1 1/2" CONDUIT FOR SATELLITE DISH FROM TELUS/SHAW DEMARC LOCATION UP TO THE ROOF AND LOCATE CLOSE TO THE VHF ANTENNA. CONFIRM ON SITE AND WITH THE DEPARTMENT REPRESENTATIVE PRIOR TO RUNNING OF THE CONDUIT FOR EXACT LOCATION

Revision/Revision	Description/Description	Date/Date
3	ISSUED FOR TENDER	2021-02-01
2	ISSUED FOR 100% REVIEW	2021-01-12
1	ISSUED FOR 95% REVIEW	2020-10-23

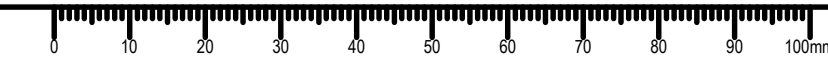
Client/Client  
**FISHERIES AND OCEANS, REAL PROPERTY, SAFETY AND SECURITY**  
VANCOUVER, BC  
219-800 BARRARD ST.

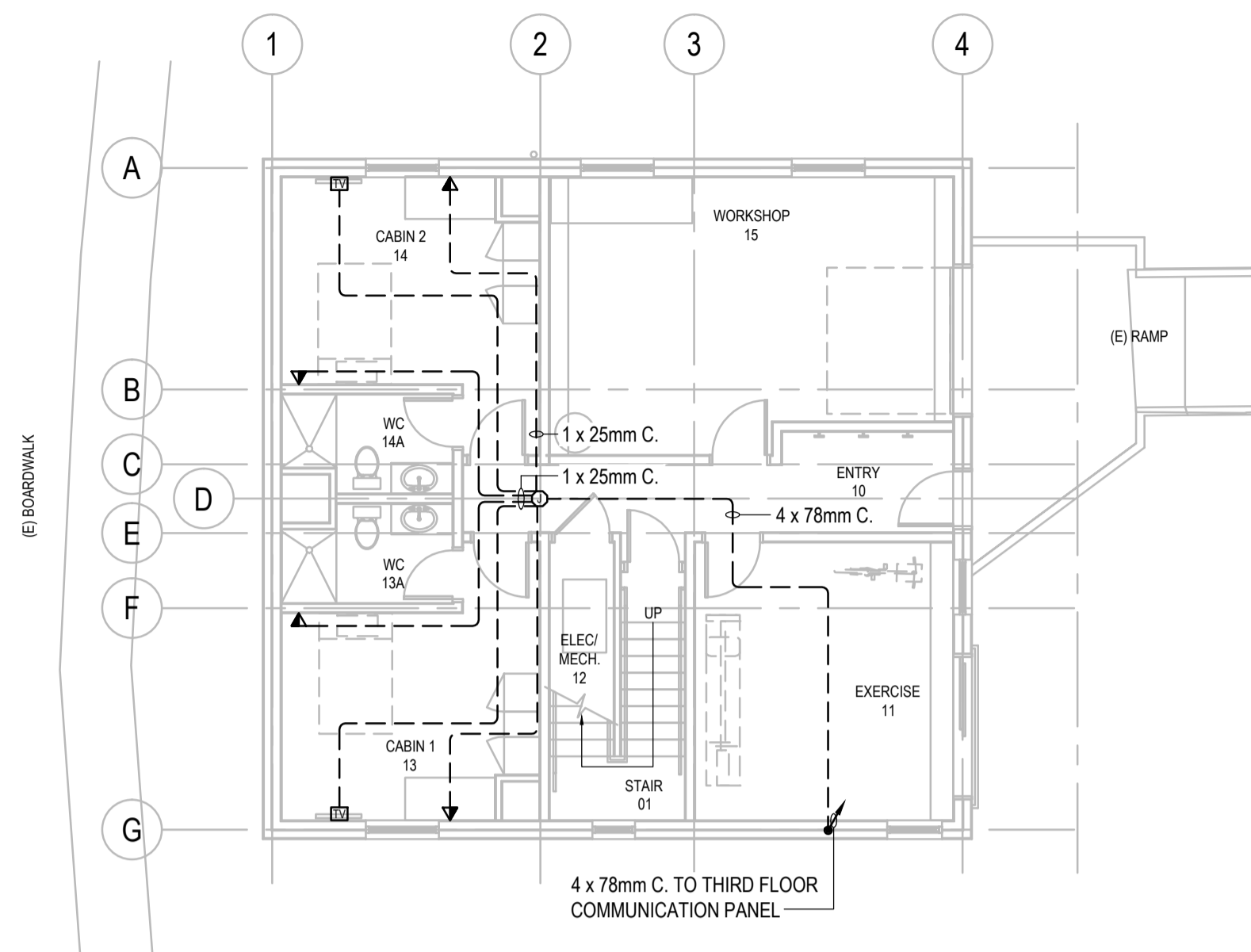
Project title/Titre du projet  
**HARTLEY BAY SAR RESIDENCE & SAR FLOAT SERVICES**  
HARTLEY BAY, B.C.

Consultant Signature Box Only  
Designed by/Concept par **BK**  
Drawn by/Dessine par **RS**  
PWGSC Project Manager/Administrateur de Projets TPSGC  
PWGSC Regional Manager, Architectural and Engineering Services/ Gestionnaire régionale, Services d'architecture et de génie, TPSGC

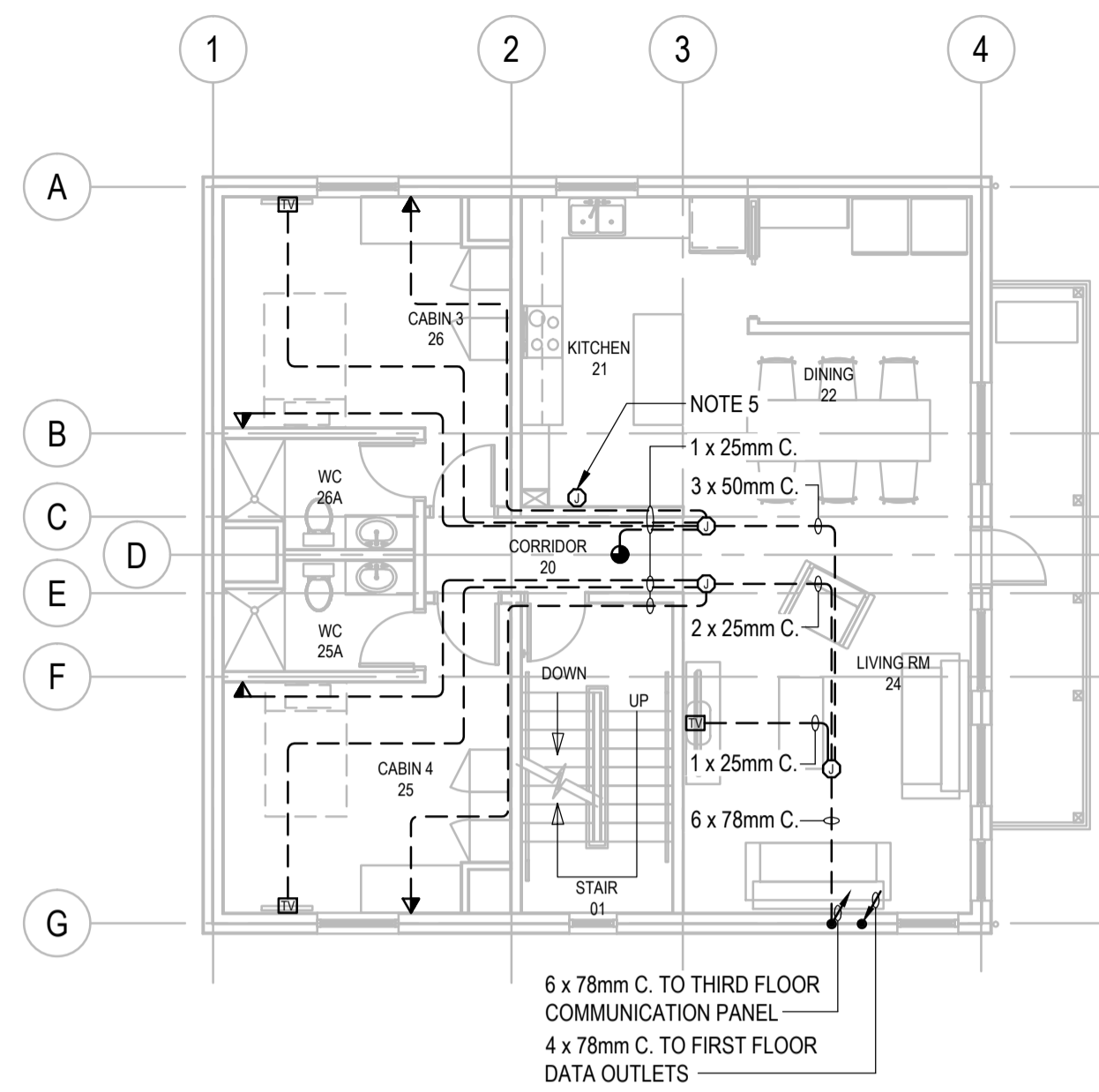
Drawing title/Titre du dessin  
**THIRD FLOOR ELECTRICAL LAYOUT**

Project No./No. du projet	Sheet/ Feuille	Revision no./ La Révision no.
2018552	E2.02	3

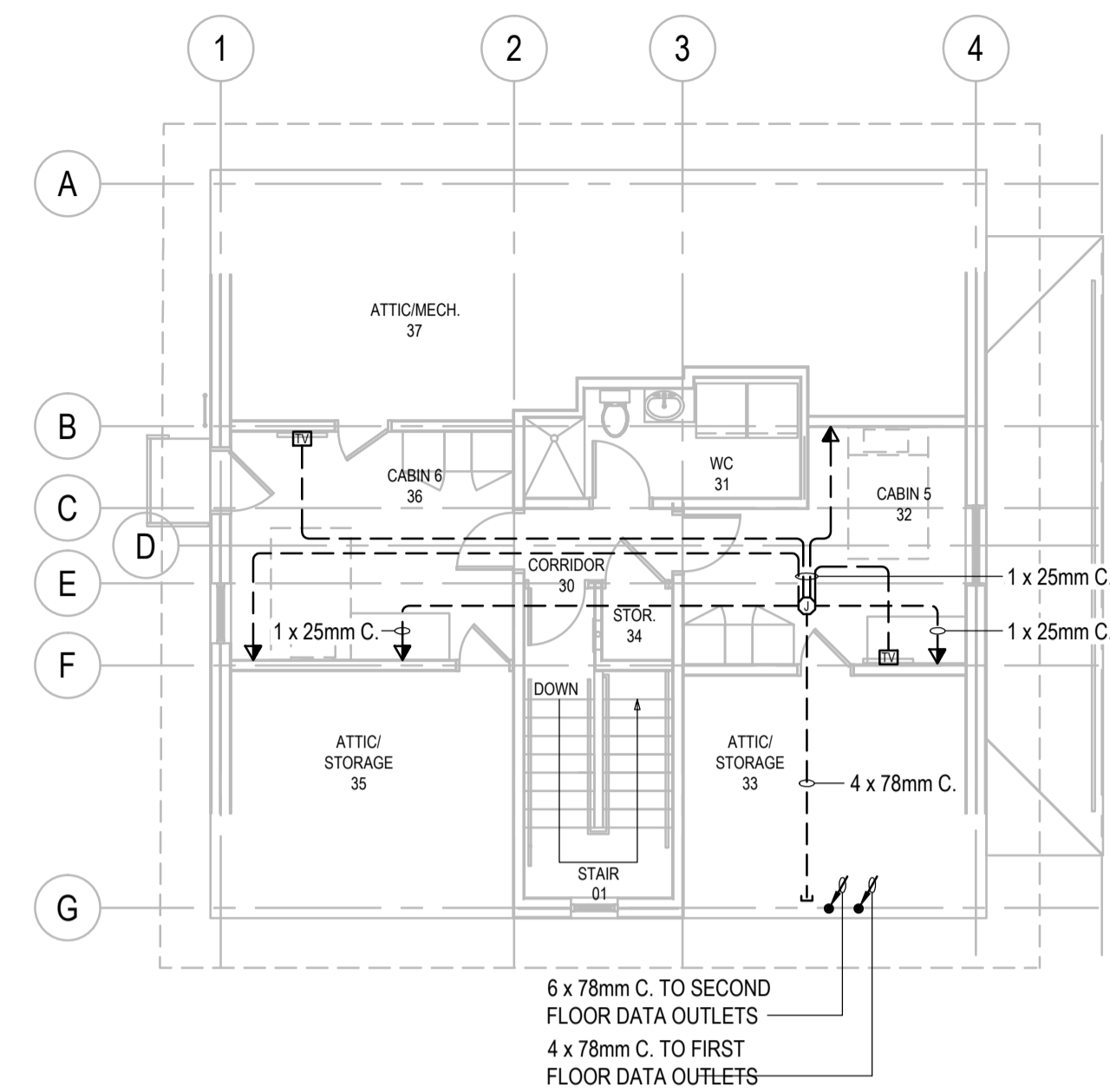




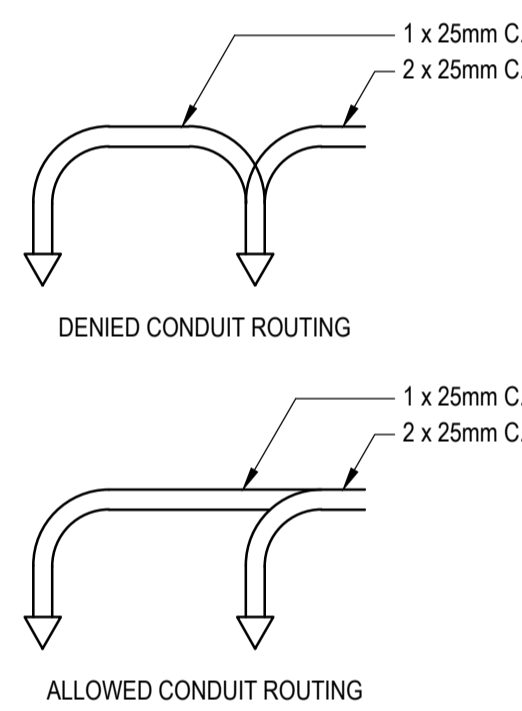
1 FIRST FLOOR COMMUNICATIONS LAYOUT  
E2.03



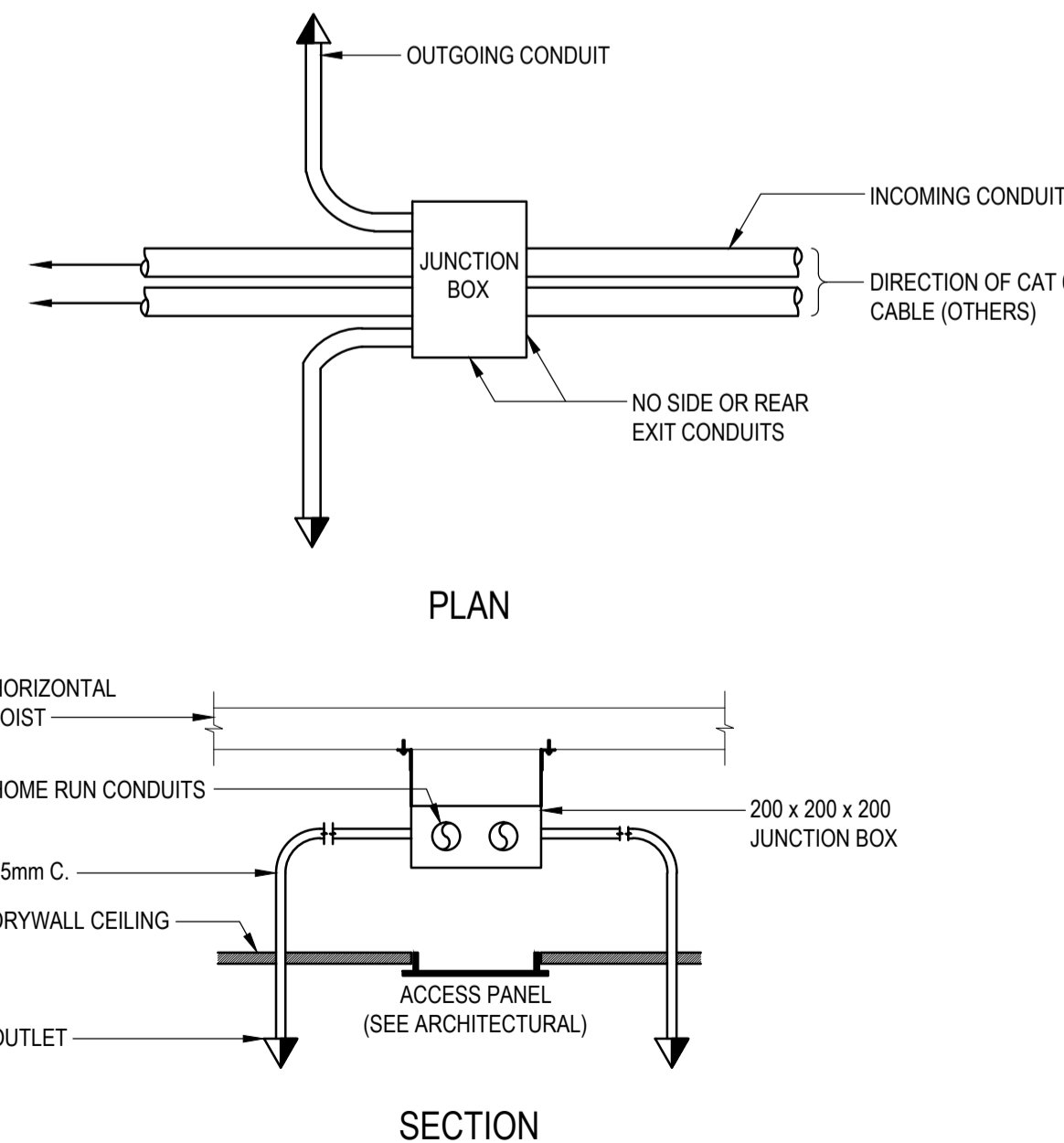
2 SECOND FLOOR COMMUNICATIONS LAYOUT  
E2.03



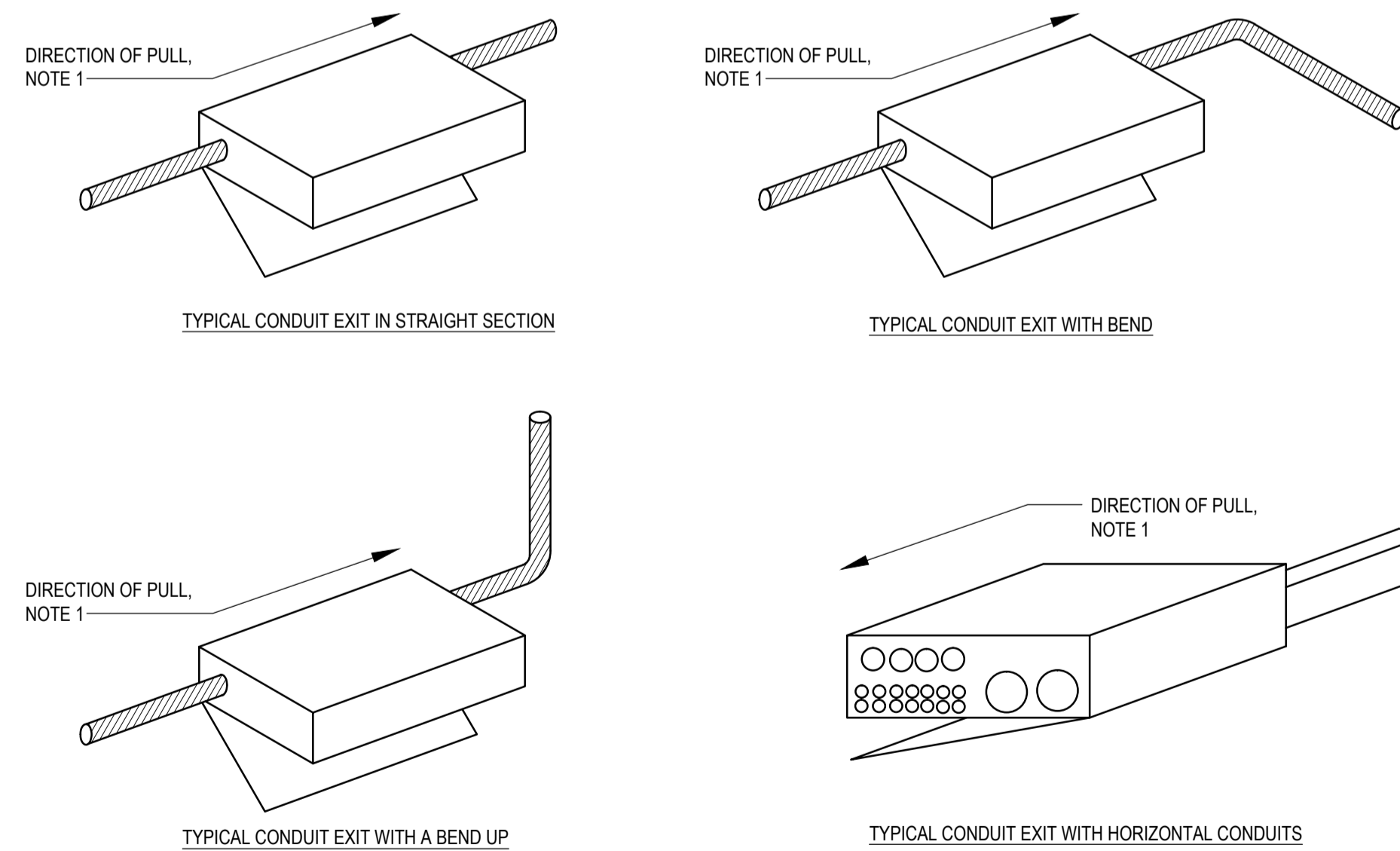
3 THIRD FLOOR COMMUNICATIONS LAYOUT  
E2.03



4 CONDUIT ROUTING DETAIL  
E2.03 NOT TO SCALE



5 COMMUNICATION DISTRIBUTION DETAILS  
E2.03 NOT TO SCALE

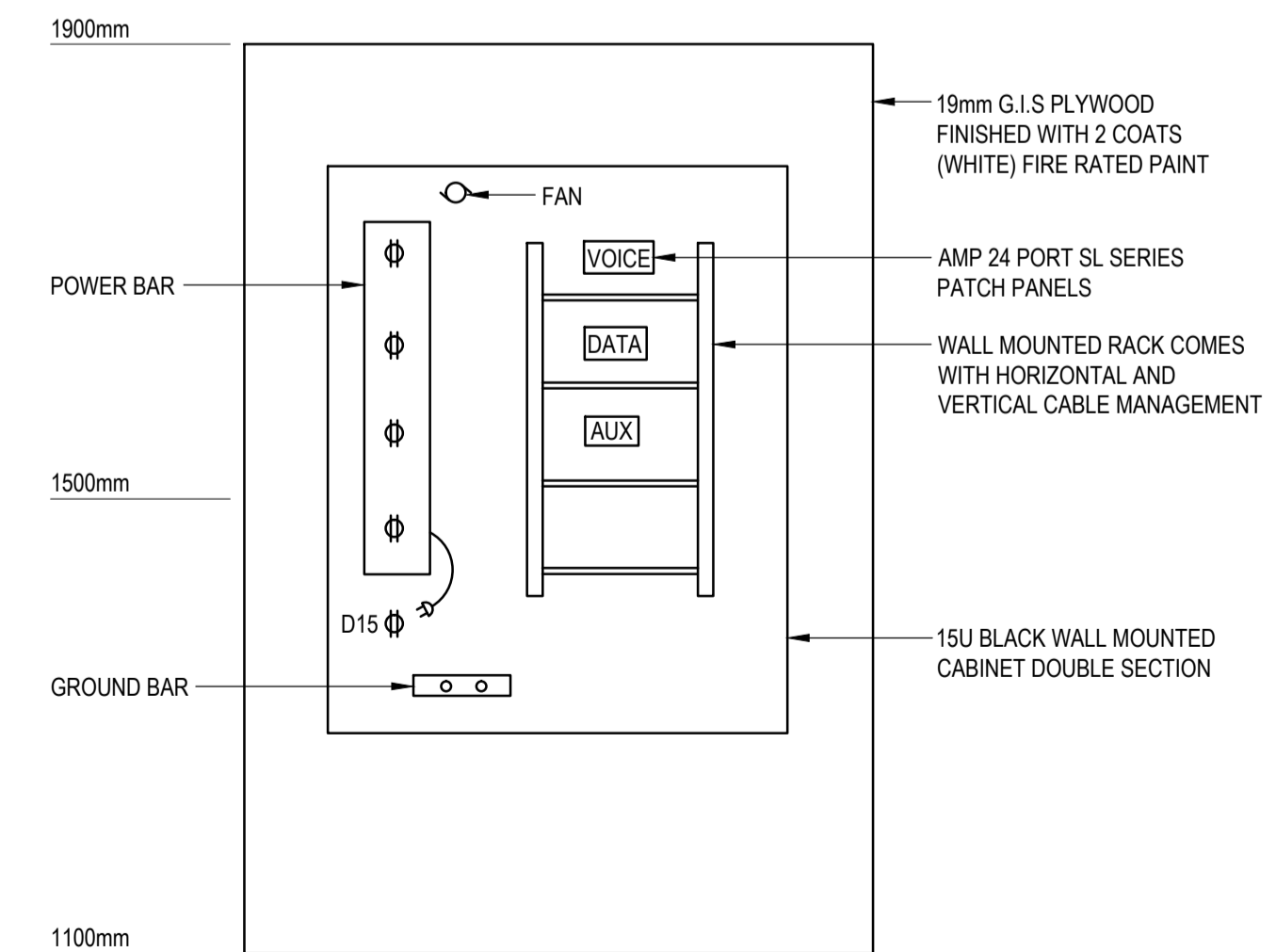


- NOTES:
- CONDUITS SHALL ONLY EXIT IN THE DIRECTION OF THE PULL. CONDUITS SHALL NEVER EXIT THE BACK, SIDES OR TOP OF A PULL BOX. CONDUIT ENDS SHALL BE ALIGNED.
  - CEILING JUNCTION BOXES COMMUNICATION/TELEVISION
    - 200mm x 200mm x 200mm DEEP FOR UP TO THREE REMOTE COMMUNICATION OUTLETS.
    - 300mm x 300mm x 200mm DEEP FOR REMAINING JUNCTION COMMUNICATIONS BOXES.

6 COMMUNICATION JUNCTION BOX DETAILS  
E2.03 NOT TO SCALE

- NOTES:
- TELEVISION CONDUITS SHOWN ARE REPRESENTATIVE SO AS NOT TO BE CONFUSED WITH COMMUNICATION.
  - TELEVISION CONDUITS TO FOLLOW COMMUNICATION ROUTING.
  - CONDUIT LAYOUT IS FOR DIAGRAMMATIC PURPOSE ONLY. CONTACT ON-SITE CONTRACTOR FOR CONDUIT LOCATIONS.
  - PROVIDE AND INSTALL 2 x 48 PORT PATCH PANELS COMPLETE WITH WALL MOUNTED BRACKET. ALL CABLING AND PATCH PANELS TO BE CAT6 RATED. ROUTE ALL CABLING TO PATCH PANEL LOCATION AND TERMINATE AT BOTH ENDS. PROVIDE INTERCONNECTION BETWEEN PATCH PANEL LOCATION AND MAIN COMMUNICATIONS DEMARCATION.
  - SUPPLY AND INSTALL 1 x 2" CONDUIT AND JUNCTION BOX AT 4' 2" CONDUIT TO BE RUN TO THE ROOF FOR UHF ANTENNA. COORDINATE WITH THE ARCH DRAWINGS AND ON SITE FOR FINAL CONDUIT LOCATION.

- NOTES:
- ELECTRICAL CONTRACTOR TO INSTALL COMMUNICATION CABLES, CONDUITS AND EQUIPMENT PER CSA-T1A STANDARDS: 568.0, 568.1, 569, 606 AND 607.



7 COMMUNICATION CABINET DETAIL  
E2.03 NOT TO SCALE

3	ISSUED FOR TENDER	2021-02-01
2	ISSUED FOR 100% REVIEW	2021-01-12
1	ISSUED FOR 95% REVIEW	2020-10-23
Revision/Revision	Description/Description	Date/Date

FISHERIES AND OCEANS,  
REAL PROPERTY,  
SAFETY AND SECURITY

VANCOUVER, BC  
219-800 BARRARD ST.

Project title/Titre du projet

HARTLEY BAY  
SAR RESIDENCE  
& SAR FLOAT  
SERVICES

HARTLEY BAY, B.C.

Consultant Signature Box Only

Designed by/Concept par  
**BK**

Drawn by/Dessine par  
**RS**

PWGSC Project Manager/Administrateur de Projets TPSGC

PWGSC Regional Manager, Architectural and Engineering Services/  
Gestionnaire régionale, Services d'architecture et de génie, TPSGC

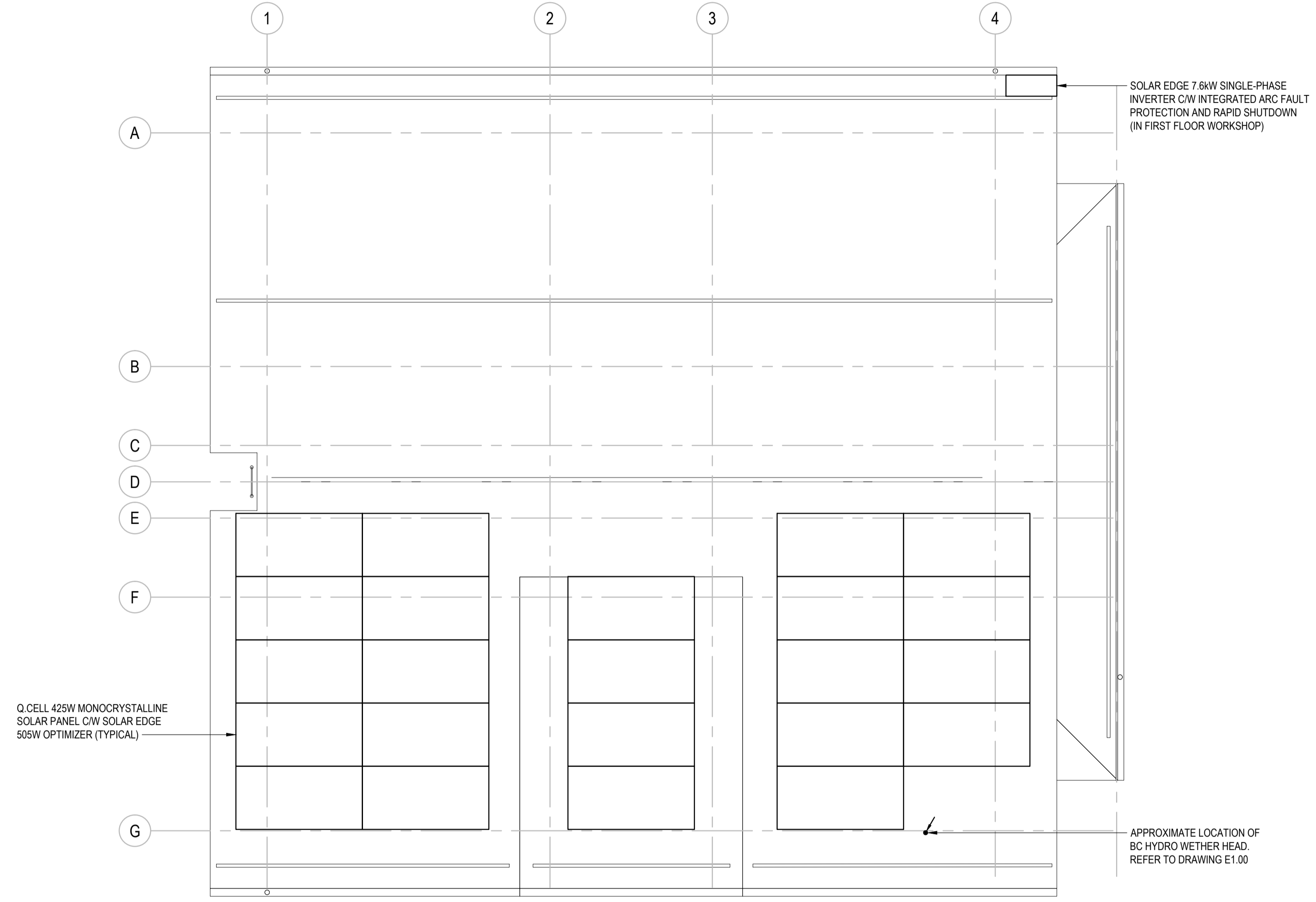
Drawing title/Titre du dessin

COMMUNICATIONS  
LAYOUTS AND DETAILS

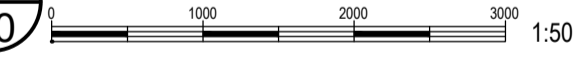
Project No./No. du projet <b>2018552</b>	Sheet/ Feuille <b>E2.03</b>	Revision no./ La Révision no. <b>3</b>
---	--------------------------------	---



AES PROJECT #1-19-030



1 ROOF PV LAYOUT  
E3.00



3	ISSUED FOR TENDER	2021-02-01
2	ISSUED FOR 100% REVIEW	2021-01-12
1	ISSUED FOR 95% REVIEW	2020-10-23
Revision/Revision	Description/Description	Date/Date

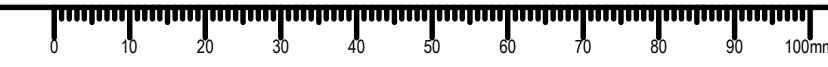
Client/Client  
**FISHERIES AND OCEANS,  
REAL PROPERTY,  
SAFETY AND SECURITY**  
  
VANCOUVER, BC  
219-800 BARRARD ST.

Project title/Titre du projet  
**HARTLEY BAY  
SAR RESIDENCE  
& SAR FLOAT  
SERVICES**  
  
HARTLEY BAY, B.C.

Consultant Signature Box Only  
  
Designed by/Concept par  
**BK**  
  
Drawn by/Dessiné par  
**RS**  
  
PWGSC Project Manager/Administrateur de Projets TPSGC  
--  
  
PWGSC, Regional Manager, Architectural and Engineering Services/  
Gestionnaire régionale, Services d'architecture et de génie, TPSGC  
--

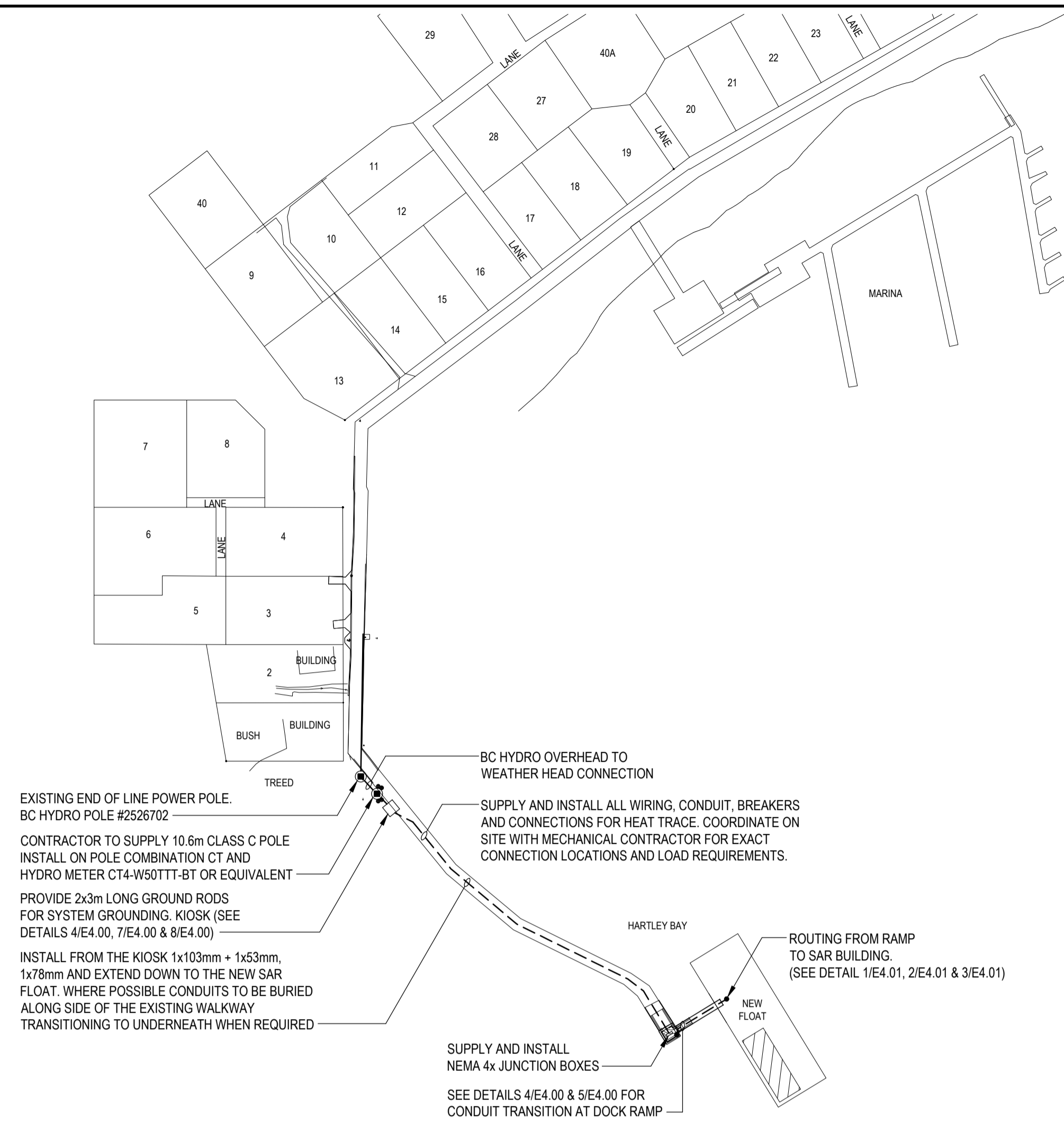
Drawing title/Titre du dessin  
**ROOF PV LAYOUT**

Project No./No. du projet <b>2018552</b>	Sheet/ Feuille <b>E3.00</b>	Revision no./ La Révision no. <b>3</b>
---	--------------------------------	---





AES PROJECT #1-19-030



EXISTING END OF LINE POWER POLE. BC HYDRO POLE #2526702  
CONTRACTOR TO SUPPLY 10.6m CLASS C POLE INSTALL ON POLE COMBINATION CT AND HYDRO METER CT4-W50TTT-BT OR EQUIVALENT  
PROVIDE 2x3m LONG GROUND RODS FOR SYSTEM GROUNDING. KIOSK (SEE DETAILS 4/E4.00, 7/E4.00 & 8/E4.00)  
INSTALL FROM THE KIOSK 1x103mm + 1x53mm, 1x78mm AND EXTEND DOWN TO THE NEW SAR FLOAT. WHERE POSSIBLE CONDUITS TO BE BURIED ALONG SIDE OF THE EXISTING WALKWAY TRANSITIONING TO UNDERNEATH WHEN REQUIRED  
SUPPLY AND INSTALL NEMA 4x JUNCTION BOXES  
SEE DETAILS 4/E4.00 & 5/E4.00 FOR CONDUIT TRANSITION AT DOCK RAMP

1 SITE PLAN  
E4.00 1:1250

- NOTES:
- EXACT LOCATION OF INCOMING HYDRO, TELUS SERVICES OVERHEAD ROUTE TO BE DETERMINED ON SITE.
  - CONTRACTOR RESPONSIBILITY TO COORDINATE THE INCOMING HYDRO, TELUS AND SHAW SERVICES.
  - CONTRACTOR TO PROVIDE CONDUIT, BOXES, PULL STRING, MAST FOR SYSTEM INSTALLED BY OTHERS. COORDINATE WITH SAR DEPARTMENT. (TELUS)

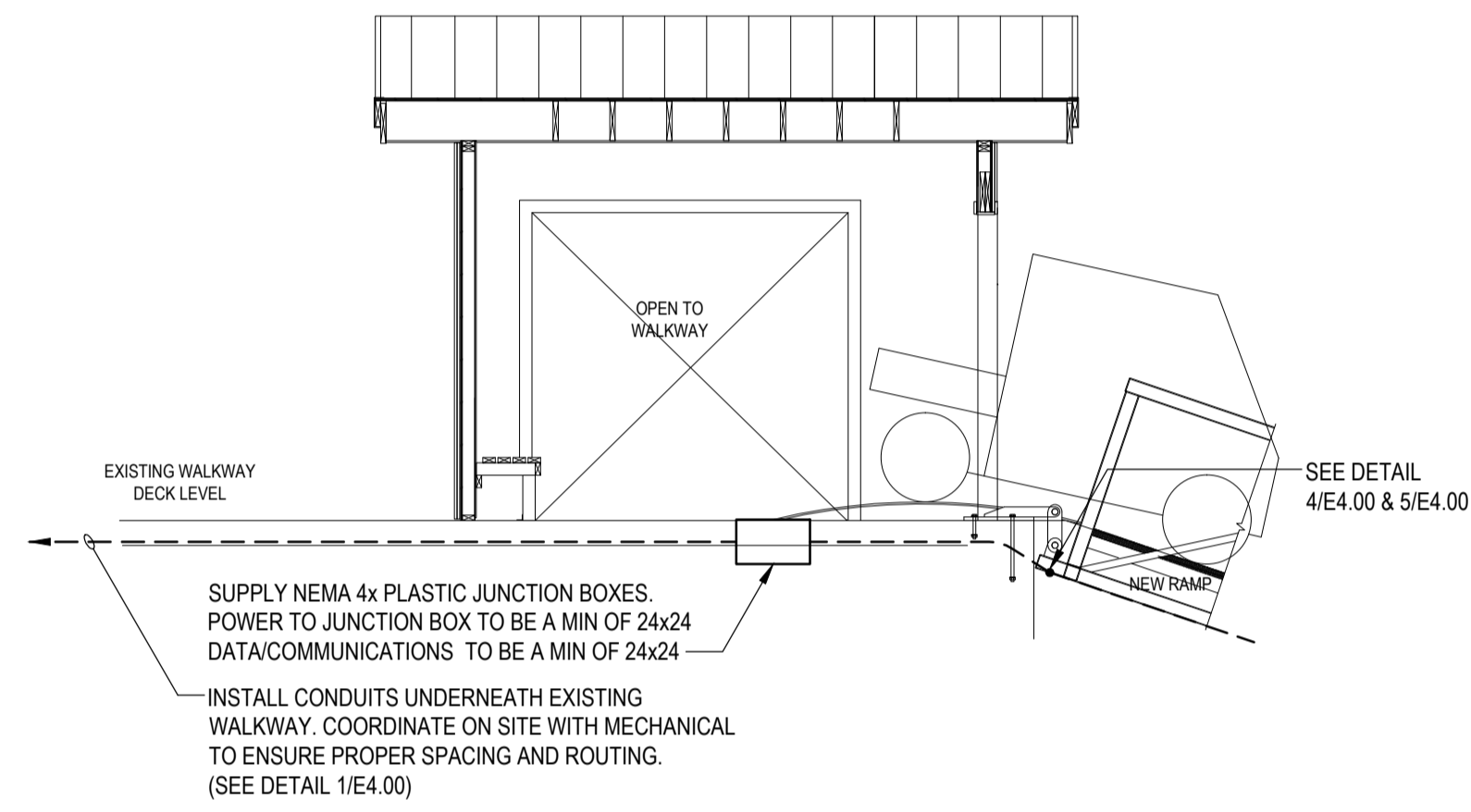


2 KEY PLAN  
E4.00 NOT TO SCALE

**LOAD CALCULATION**  
HARTLEY BAY SAR STATION

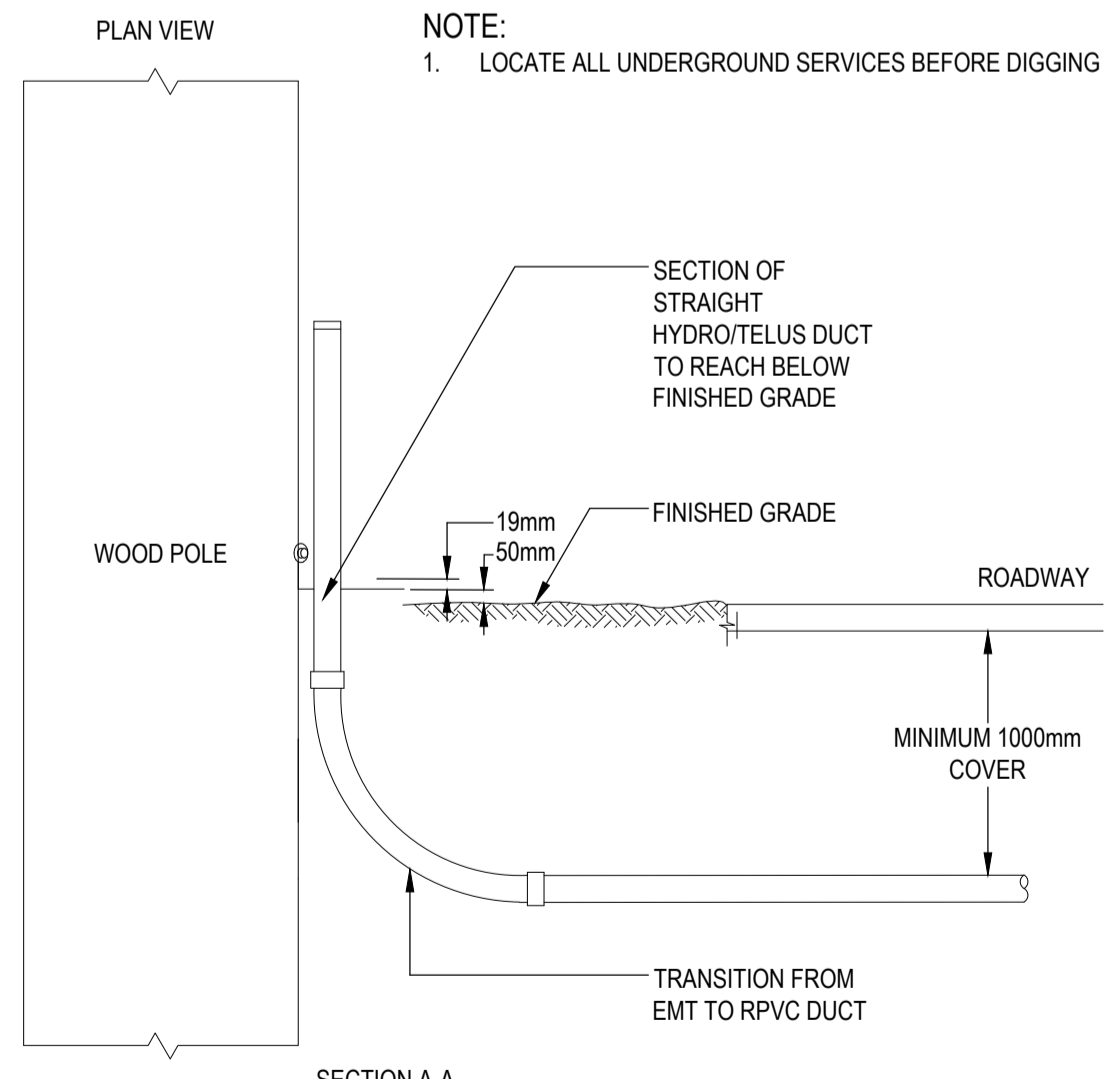
160m <sup>2</sup> x 50m <sup>2</sup>	=	8000W
MECHANICAL	=	20KW
HEAT	=	8KW
USER		
-FRIDGE	=	1KW
-DISHWASHER	=	0.5KW
-DRYER	=	2KW
-MISS	=	5KW
		185A = 44.5KW
		240V
		BUILDING
PLU'S	=	29KW
BOAT 150A-2P @ 80%	=	29KW
		120A = BOAT
GRAND TOTAL	=	44.5KW + 29KW = 73.5KW + 240V
		= 306A

ELECTRICAL CONTRACTOR TO INSTALL COMMUNICATION CABLES, CONDUITS AND EQUIPMENT PER CSA-T1A STANDARDS: 568.0, 568.1, 569, 606 AND 607.

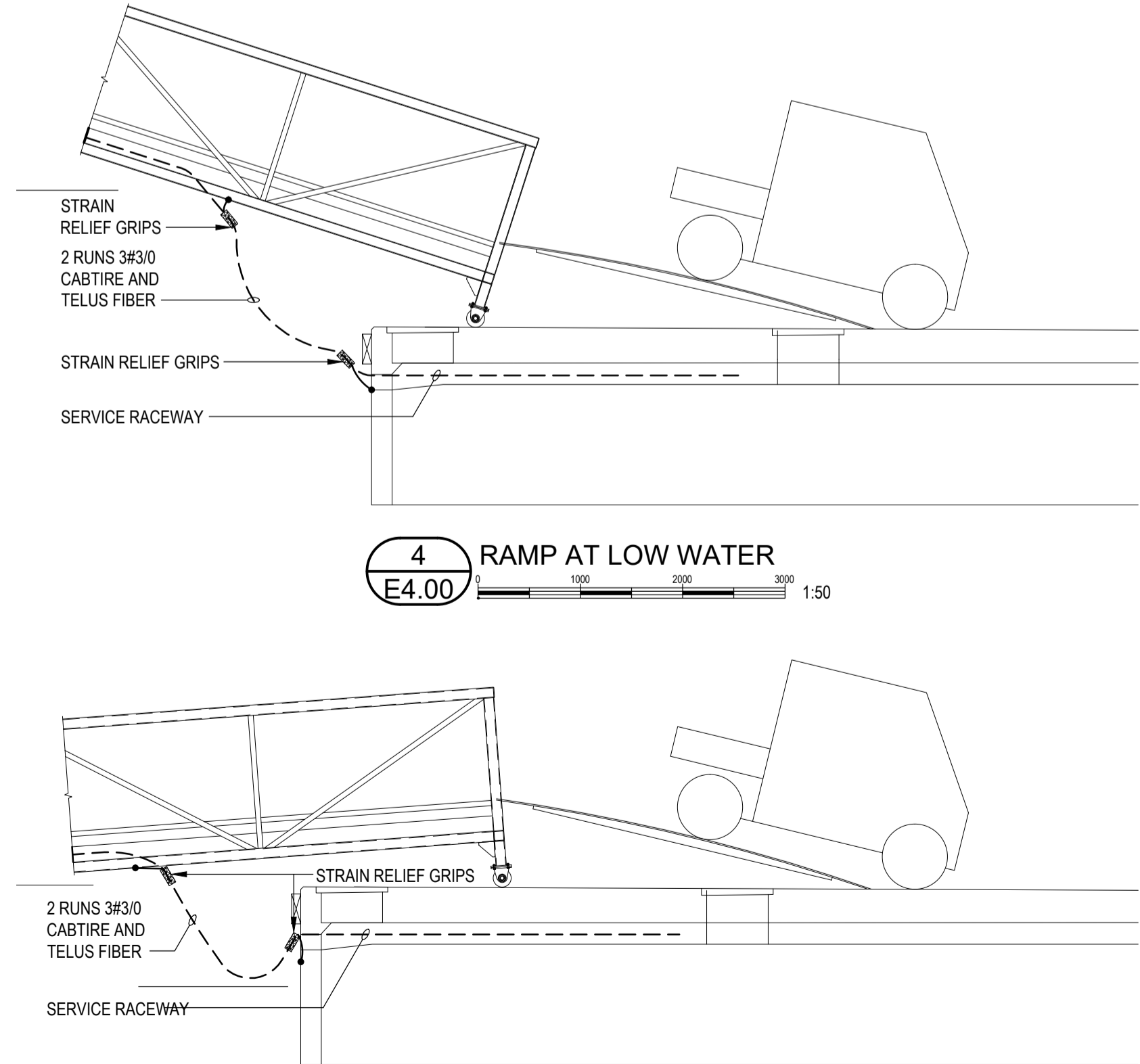


3 RAMP AT GRADE  
E4.00 1:50

- PROVIDE A KIOSK WITH THE FOLLOWING REQUIREMENTS:
- EEMAC - 4x ENCLOSURE
  - MARINE GRADE ALUMINUM
  - CORROSIVE RESISTANT
  - ASA 61 POWDER COAT RESIDENT
  - LED INTERIOR LIGHT C/W SWITCH AND MINI BREAKER
  - DUPLEX RECEPTACLE (GF) AND MINI BREAKER
  - GUTTER STYLE OPENING TYPE GASKETED DOOR C/W 3 POINT PAD LOCKABLE HANDLE
  - METER SOCKET AND VIEWING METER
  - 400A/400AF, 120/240V, 1Ø, 3W MAIN DISCONNECT
  - OVERHANGING TOP CANOPY
  - STRIP HEATER, THERMOSTAT C/W CONTROL TRANSFORMER AND MINI BREAKER
  - TOP LIFTING EYES
  - DOUBLE FULL SIZE OPENING DOORS
  - KIOSK TO MEET BC HYDRO REQUIREMENTS



9 PILASTER DETAIL  
E4.00 NOT TO SCALE



4 RAMP AT LOW WATER  
E4.00 1:50

5 RAMP AT HIGH WATER  
E4.00 1:50

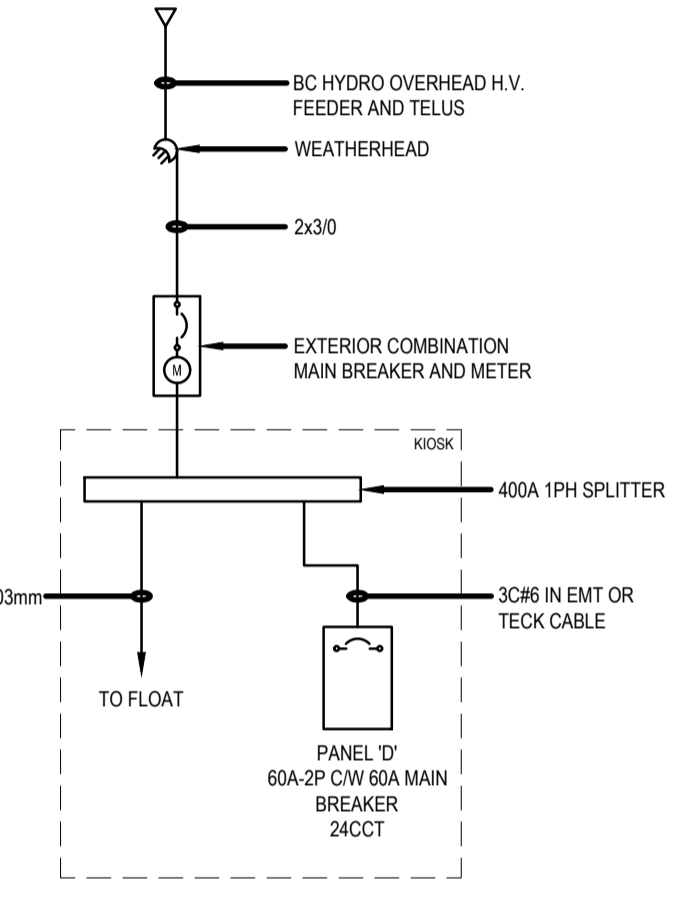
**PANELBOARD SCHEDULE**

JOB NO./NAME : 1-19-030 / HARTLEY BAY SAR STATION  
PANEL SYSTEM : D  
TYPE : 120/240V, 3W  
LOCATION : IN KIOSK  
MOUNTING SURFACE :  
NO. CIRCUITS : 24  
BUS SIZE : 60A  
SYM. FAULT RATING : -

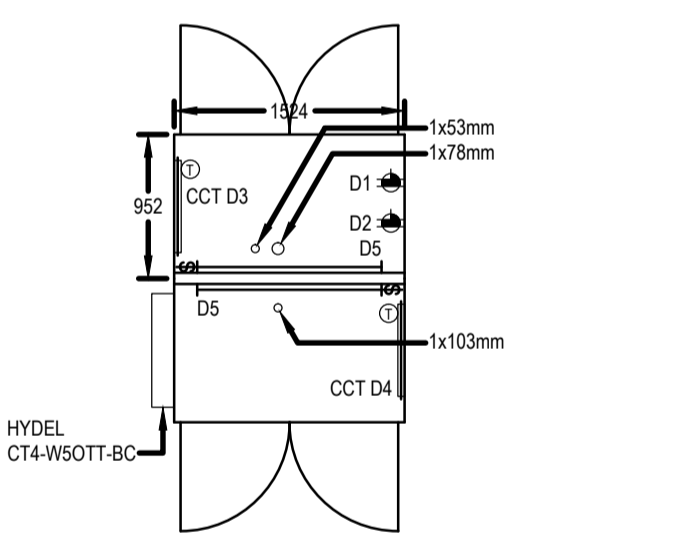
DESCRIPTION	BRK	POLE	CCT	CCT	POLE	BRK	DESCRIPTION
KIOSK REC	20	1	01	02	1	20	KIOSK REC
BASEBOARD HEATER	20	1	03	04	1	20	BASEBOARD HEATER
KIOSK LIGHTS	15	1	05	06	2	30	HEAT TRACE
HEAT TRACE	30	2	07	08			
SPARE	15	1	11	12	1	15	SPARE
SPARE	15	1	13	14	1	15	SPARE
SPARE	15	1	15	16			
			17	18			
			19	20			
			21	22			
			23	24			

\* GFCI Breaker  
\*\* Arc Fault Breaker

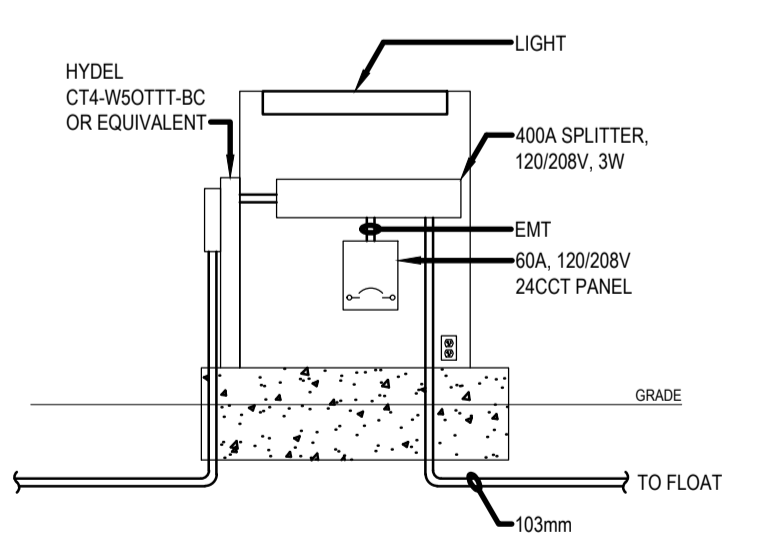
PANEL C/W 60A - 2P MAIN BREAKER



6 SINGLE LINE DIAGRAM  
400A - 120/240V, 1PH, 3W SERVICE  
E4.00 NOT TO SCALE



7 KIOSK OVERHEAD PLAN  
E4.00 1:50



8 KIOSK INTERIOR ELEVATION  
E4.00 1:50

- KIOSK NOTES:
- PROVIDE AND INSTALL BC HYDRO APPROVED 400A METER SOCKET ASSEMBLY COMPLETE WITH INTEGRAL CT + METER. HYDEL CT4-W50H-BC.
  - METER TO BE MOUNTED BETWEEN 1500mm TO 1800mm A.F.F.
  - KIOSK TO BE A MINIMUM WIDTH OF 6'.
  - CONFIRM ALL EQUIPMENT AND KIOSK DIMENSIONS DURING THE SHOP DRAWING STAGE AND MAKE ADJUSTMENTS TO PAD DIMENSIONS AS REQUIRED.

Revision/Revision	Description/Description	Date/Date
3	ISSUED FOR TENDER	2021-02-01
2	ISSUED FOR 100% REVIEW	2021-01-12
1	ISSUED FOR 95% REVIEW	2020-10-23

FISHERIES AND OCEANS,  
REAL PROPERTY,  
SAFETY AND SECURITY  
VANCOUVER, BC  
219-800 BURRARD ST.

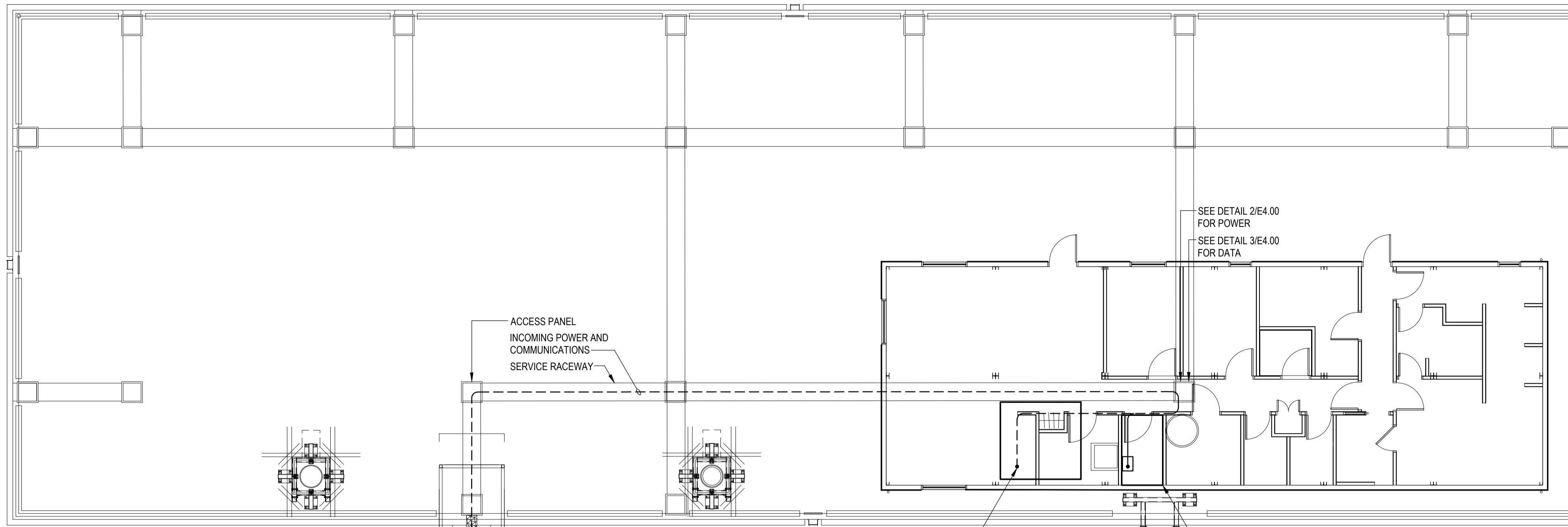
HARTLEY BAY SAR RESIDENCE & SAR FLOAT SERVICES  
HARTLEY BAY, B.C.

Consultant Signature Box Only  
Designed by/Concept par BK  
Drawn by/Dessine par RS  
PWGSC Project Manager/Administrateur de Projets TPSGC  
PWGSC Regional Manager, Architectural and Engineering Services/ Gestionnaire régionale, Services d'architecture et de génie, TPSGC

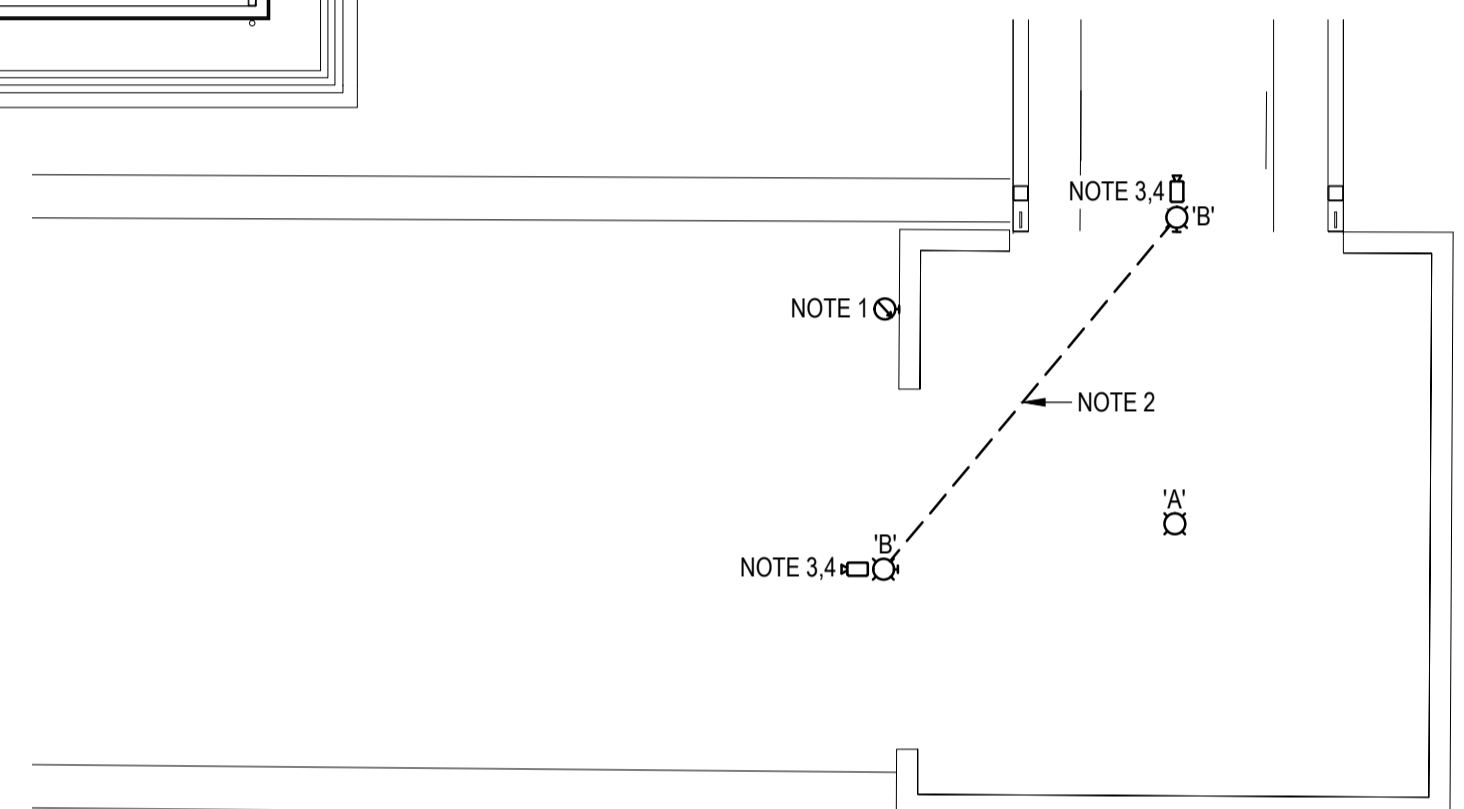
Float Services Site Plan, Schedules and Details

Project No./No. du projet	Sheet/ Feuille	Revision no./ La Révision no.
2018552	E4.00	3



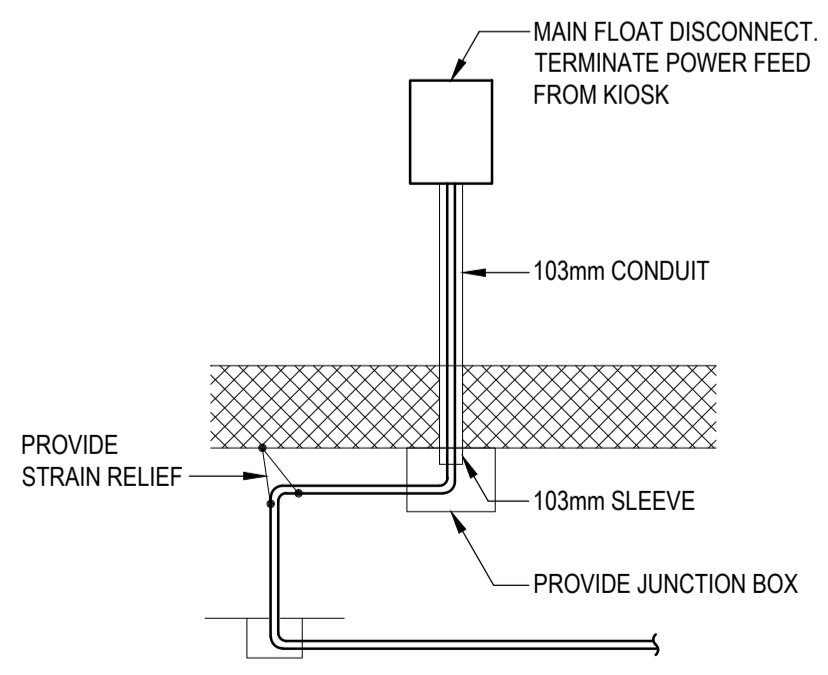
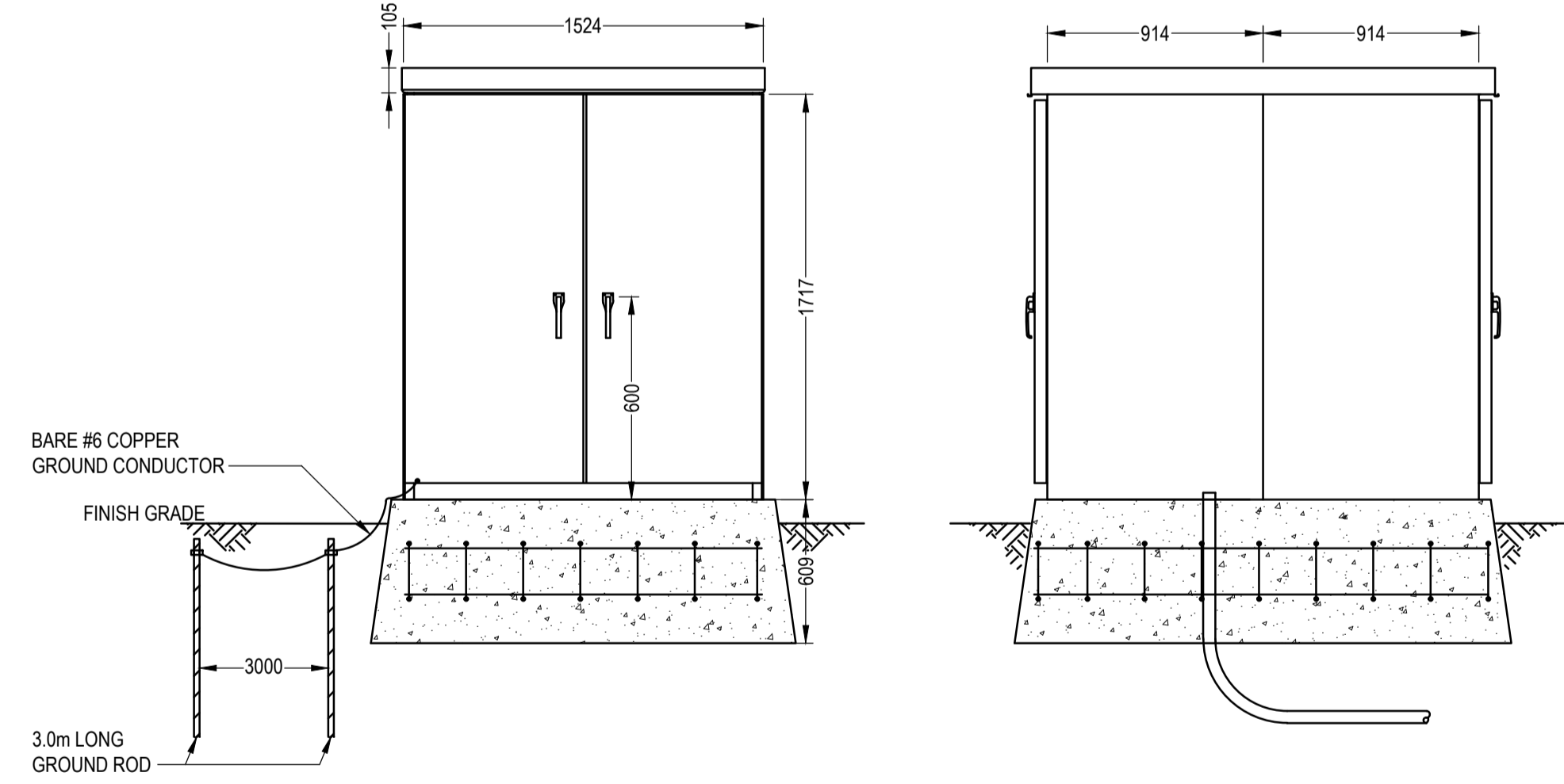
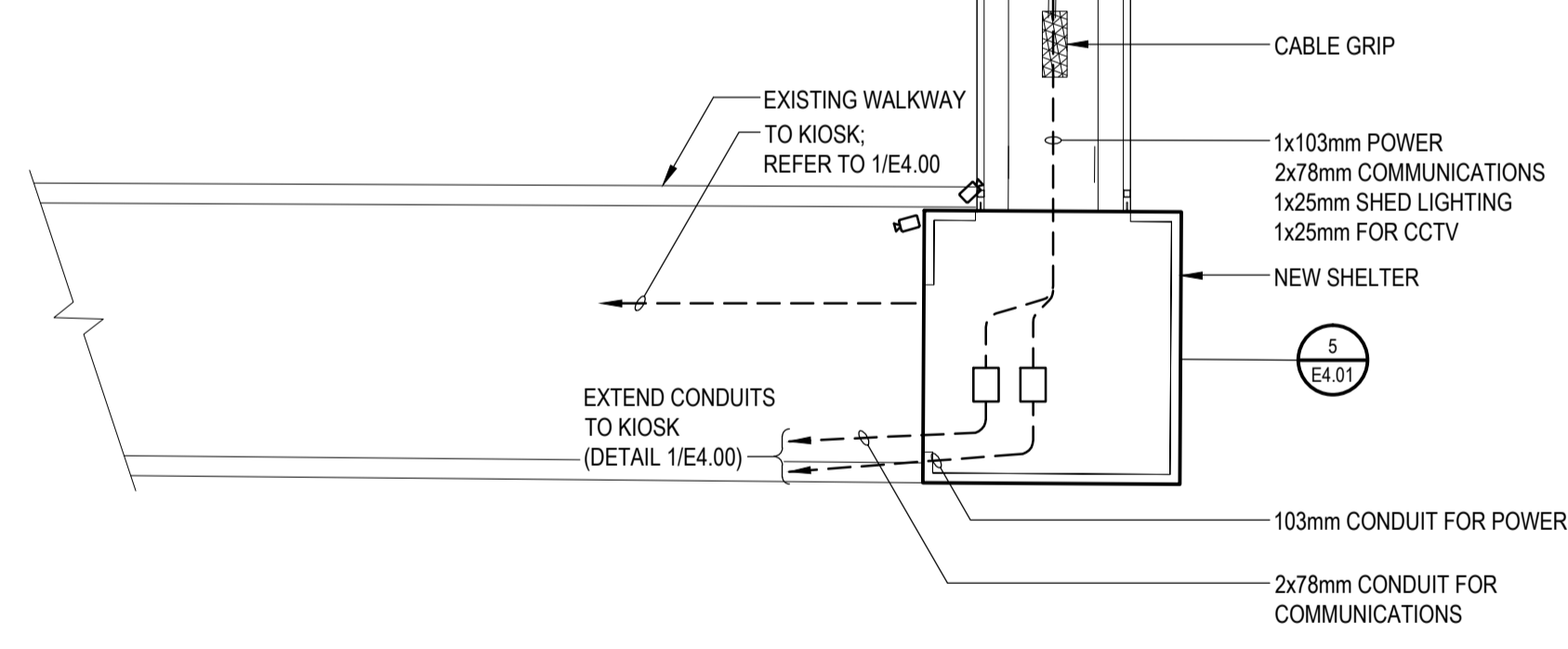


**1** FLOAT PLAN ELECTRICAL LAYOUT  
E4.01 1:100

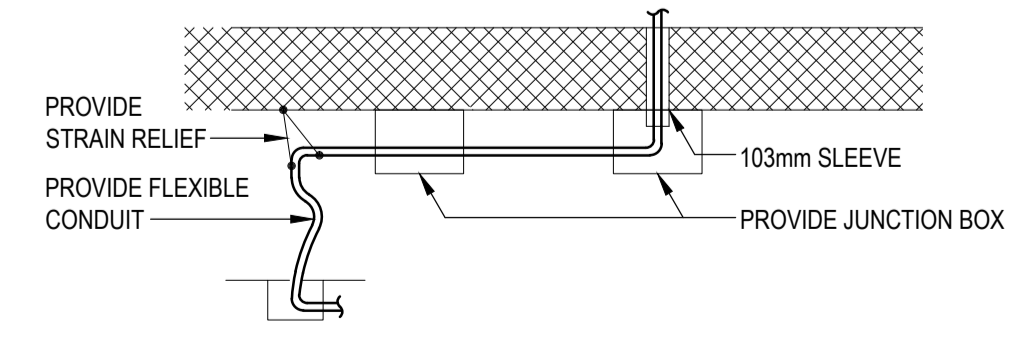


**5** NEW SHELTER ELECTRICAL LAYOUT  
E4.01 1:50

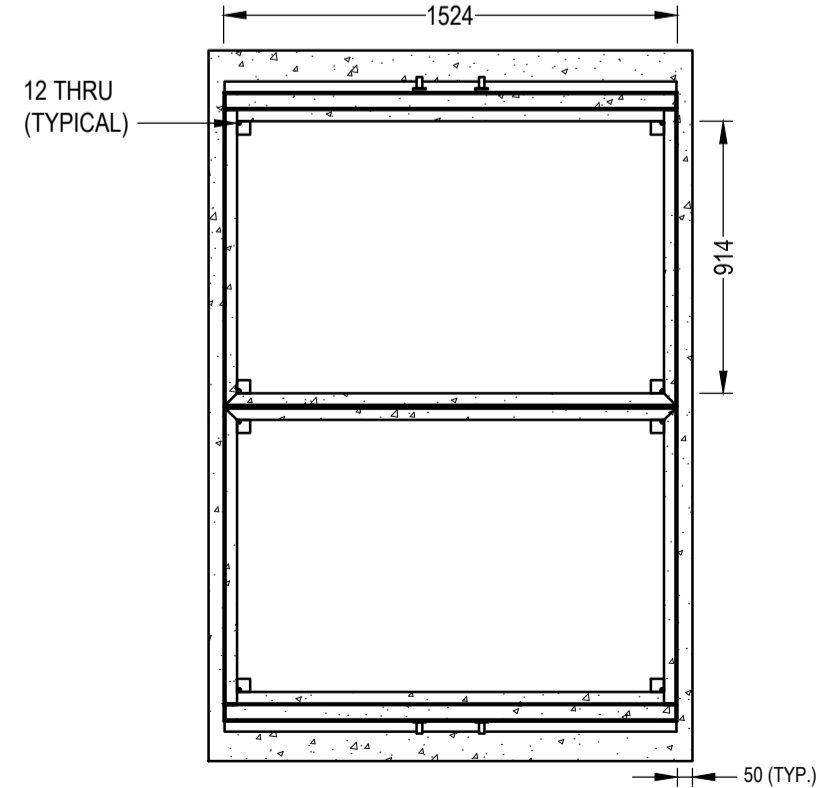
- NOTES:**
- CONNECT ALL LIGHTS IN A PHOTO CELL.
  - INSTALL (1) CONDUIT TO SAR FLOAT FOR LIGHTING. INSTALL WIRING AND ALL OTHER COMPONENTS FOR THE COMPLETE OPERATION OF ALL 3 LIGHTS SHOWN.
  - INSTALL (2) CAMERAS AS SHOWN.
  - INSTALL (1) 1" CONDUIT FROM CAMERAS BACK TO THE COMMUNICATIONS ROOM.



**2** UNDER BUILDING POWER CONDUIT DETAIL  
E4.01 1:50



**3** UNDER BUILDING COMMUNICATIONS CONDUIT DETAIL  
E4.01 1:50



**4** KIOSK EXTERIOR DETAIL  
E4.01 NOT TO SCALE

LUMINAIRE SCHEDULE					
TYPE	MANUFACTURER	CAT. No.	LAMPS	BALLAST	REMARKS
A	LITHONIA LIGHTING	VGR4C-50LED-MVOLT-DBLB-MS18	-	-	WET LOCATION MOTION SENSOR
B	RAB DESIGN	ORA4-LED80-B-4K-XXX-XX	-	-	-

Revision/Revision	Description/Description	Date/Date
3	ISSUED FOR TENDER	2021-02-01
2	ISSUED FOR 100% REVIEW	2021-01-12
1	ISSUED FOR 95% REVIEW	2020-10-23

**FISHERIES AND OCEANS, REAL PROPERTY, SAFETY AND SECURITY**  
VANCOUVER, BC  
219-800 BARRARD ST.

Project title/Titre du projet  
**HARTLEY BAY SAR RESIDENCE & SAR FLOAT SERVICES**  
HARTLEY BAY, B.C.

Consultant Signature Box Only  
Designed by/Concept par **BK**  
Drawn by/Dessiné par **RS**  
PWGSC Project Manager/Administrateur de Projets TPSGC  
PWGSC Regional Manager, Architectural and Engineering Services / Gestionnaire régionale, Services d'architecture et de génie, TPSGC

Drawing title/Titre du dessin  
**FLOAT SERVICES DETAILS**

Project No./No. du projet	Sheet/ Feuille	Revision no./ La Révision no.
2018552	E4.01	3