



WSP PROJ # - 191-03446-00



HVAC LEGEND

HVAC SYMBOLS:

- RETURN GRILLE
- EXHAUST GRILLE
- SIDEWALL GRILLE
- BRANCH DUCT, SIZE AS NOTED
- SUPPLY AIR DUCT, TOWARD, AWAY
- RETURN AIR, TOWARD, AWAY
- EXHAUST AIR, TOWARD, AWAY
- ROUND DUCT, TOWARD, AWAY
- ROUND DUCT
- RECTANGULAR DUCT, SIDE FACING/DEPTH
- 25 THICK ACOUSTIC DUCT INSULATION
- MOTORIZED DAMPER
- DUCT BREAK
- BASEBOARD HEATER
- SUPPLY REGISTER
- UNIT HEATER
- THERMOSTAT

ABBREVIATIONS:

CD	CONTROL DAMPER
DG	DOOR GRILLE
E/A	EXHAUST AIR
EF	EXHAUST FAN
EG	EXHAUST GRILLE
ER	EXHAUST REGISTER
FD	FIRE DAMPER
O/A	OUTDOOR AIR
R/A	RETURN AIR
R/G	RETURN GRILLE
S/A	SUPPLY AIR
SG	SUPPLY GRILLE
SR	SUPPLY REGISTER
T/A	TRANSFER AIR
TG	TRANSFER GRILLE

CONTROL WIRING

DIFFUSER TAG

EQUIPMENT TAG

PLUMBING LEGEND

PLUMBING SYMBOLS:

- FLOOR DRAIN
- HUB DRAIN
- S-TRAP
- PIPE OFFSET UP
- PIPE OFFSET DOWN
- PIPE CAP
- PIPE CONTINUES
- CLEANOUT
- COLD WATER
- HOT WATER
- HOT WATER RECIRCULATION
- VENT TO ROOF
- SANITARY PIPING UNDER FLOOR
- SANITARY PIPING ABOVE FLOOR
- PLUMBING VENT
- HOSE BIBB
- VENT TO ROOF

ABBREVIATIONS:

C	COLD WATER
CO	CLEANOUT
DW	DISHWASHER
FD	FLOOR DRAIN
FFL	FINISHED FLOOR LEVEL
FU	FIXTURE UNITS
H	HOT WATER
HB	HOSE BIBB
L or LB	LAVATORY BASIN
R	HOT WATER RECIRCULATION
S	SINK
SAN	SANITARY PIPING
SH	SHOWER
VTR	VENT TO ROOF
WC	WATER CLOSET

SIZE

PIPE TYPE

FIXTURE UNIT COUNT

CONTROL DAMPER SCHEDULE

TAG	SIZE (WxH)	NOTES
CD-1	150 dia.	1

NOTE:
1. PARALLEL BLADE.
2. OPPOSED BLADE.

MECHANICAL DRAWING LIST

DRAWING NO.	DRAWING NAME	SCALE
M0.01	LEGEND, SCHEDULES & DRAWING LIST	N/A
M0.02	MECHANICAL - FLOAT SERVICES PLANS AND DETAILS	AS NOTED
M1.01	PLUMBING - FLOOR PLANS AND DETAILS	1:100
M1.02	PLUMBING - SCHEMATICS	AS NOTED
M2.01	HVAC - FLOOR PLANS AND DETAILS	1:100

HEAT PUMP (SPLIT TYPE) SCHEDULE

TAG	HEATING			COOLING			INDOOR UNIT										OUTDOOR UNIT				NOTES
	KW / MBH	ELEC COIL 1 KW	ELEC COIL 2 KW	SENSIBLE KW / MBH	EER	SEER	TYPE	AIR FLOW L/s / cfm	ESP Pa / in	MOTOR HP	VOLTS	PHASE	ELEC COIL 1 MCA	ELEC COIL 1 MOP	ELEC COIL 2 MCA	ELEC COIL 2 MOP	VOLTS	PHASE	MCA	MOP	
HP-1	6.3 / 21.6	7.2	3.6	10.1 / 34.4	12.5	15	VERTICAL	490 / 1035	125 / 0.5	1/2	208	1	48	50	22	25	208	1	18	30	1, 2, 3

NOTE:
1. LOW TEMPERATURE HEATING AND COOLING CAPACITIES BASED ON A.R.I. STANDARD 210/240 RATING CONDITIONS. LOW TEMPERATURE HEATING CAPACITY AT 17°F DB, 15°F WB AIR ENTERING OUTDOOR COIL.
2. ELECTRIC COIL 1 MCA AND MOP INCLUDES MOTOR AMPS.
3. R-410A REFRIGERANT.

FAN SCHEDULE

TAG	SERVICE	AIR FLOW l/s / cfm	STATIC PRESSURE Pa / in	SONES	RPM	MOTOR HP	ELECT DATA		NOTES
							VOLTS	PHASE	
EF-1	CEILING EXHAUST FAN	40 / 80	60 / 0.25	1.0	1172	12 W	120	1	1
EF-2	CEILING EXHAUST FAN	40 / 80	60 / 0.25	1.0	1172	12 W	120	1	1
EF-3	CEILING EXHAUST FAN	40 / 80	60 / 0.25	1.0	1172	12 W	120	1	1
EF-4	CEILING EXHAUST FAN	40 / 80	60 / 0.25	1.0	1172	12 W	120	1	1

NOTE:
1. COMPLETE WITH 3-SPEED MOTOR, CEILING GRILLE, VIBRATION ISOLATION, FLEXIBLE CONNECTIONS AND BACKDRAFT DAMPER.

TANK SCHEDULE

TAG	SERVICE	TYPE	VOLUME L / USgal	DIMENSIONS mm	MAX. WORKING PRESSURE kPa / psi	ELECTRICAL			NOTES
						ELEMENT WATTAGE	VOLTAGE	PHASE	
T-DHW	DOMESTIC HOT WATER	ELECTRIC	320 / 85	OL: 1676 DIA: 711	1035 / 150	4500	208	1	
ET-DHW	DOMESTIC HOT WATER	EXPANSION	25 / 6.4	OL: 457 DIA: 305	1035 / 150	-	-	-	1

NOTE:
1. MAXIMUM ACCEPTANCE FACTOR 0.5.

PUMP SCHEDULE

TAG	SERVICE	PUMP TYPE	FLOW l/min / gpm	FLUID	FLUID TEMP. °C / °F	DIFF. PRESS kPa / feet	MOTOR SIZE HP	ELECT DATA		NOTES
								VOLTS	PHASE	
P-DHW	DHW RECIRCULATION	INLINE	10 / 3	DOMESTIC WATER	60.0 / 140	24 / 8	FRAC	120	1	

GRILLE, REGISTER AND DIFFUSER SCHEDULE

TAG	TYPE	BORDER	MATERIAL	CORE STYLE	LOUVRE ORIENT.	VOLUME DAMPER	FASTENING	FINISH	NOTES
SR1	SUPPLY REGISTER	25MM	ALUMINUM	LINEAR BAR	-	YES	COUNTERSUNK SCREW	BY ARCHITECT	1
SD1	SUPPLY DIFFUSER	-	ALUMINIUM	PLAQUE	-	YES	SCREW	BY ARCHITECT	2
RG1	RETURN GRILLE	32MM	STEEL	LOUVERED	S	NO	SURFACE MOUNT	BY ARCHITECT	3
TG1	TRANSFER GRILLE	32MM	STEEL	LOUVERED	S	NO	SURFACE MOUNT	BY ARCHITECT	3
DG1	DOOR GRILLE	33MM	STEEL	LOUVERED	L	NO	SURFACE MOUNT	BY ARCHITECT	4

NOTE:
1. LINEAR, 3mm [1/8"] BARS; 13mm [1/2"] O.C.; 15° DEFLECTION, HEAVY DUTY FRAME.
2. RESIDENTIAL CEILING MINI DIFFUSER, 100MM DUCT SIZE.
3. 13MM [1/2"] BLADE SPACING, 45° BLADE ANGLE.
4. FLAT BORDER, ONE SIDE ONLY.

HEAT RECOVERY VENTILATOR SCHEDULE

TAG	LOCATION	AIR FLOW l/s / cfm	EXT. STATIC PRESS. Pa / in	EFFICIENCY		ELECT DATA			NOTES
				O/A EAT °C / °F	SENSIBLE	MOTOR WATTS	VOLTS	PHASE	
HRV-1	MECH ROOM	30 / 65	75 / 0.3	0.0 / 32	68%	79	120	1	1, 2

NOTE:
1. 5-SPEED FAN OPERATION.
2. PERFORMANCE HVI CERTIFIED

UNIT HEATER SCHEDULE

TAG	TYPE	AIR FLOW l/s / cfm	HEATING CAPACITY KW	MOTOR HP	ELECT DATA		NOTES
				VOLTS PHASE			
UH-1	UNIT HEATER - ELECTRIC	240 / 510	4.0	1/30	208	1	1

NOTE:
1. PROVIDE THERMOSTAT

Revision/Revision	Description/Description	Date/Date
5.	ISSUED FOR TENDER	2021-02-01
4.	100%	2021-01-12
3.	100% REVIEW	2020-12-18
2.	95% REVIEW	2020-10-23
1.	60% CD REVIEW	2020-09-23

Client/Client
FISHERIES AND OCEANS, REAL PROPERTY, SAFETY AND SECURITY
VANCOUVER, BC
219-800 BURRARD ST.

Project title/Titre du projet
HARTLEY BAY SAR RESIDENCE & SAR FLOAT SERVICES
HARTLEY BAY, B.C.

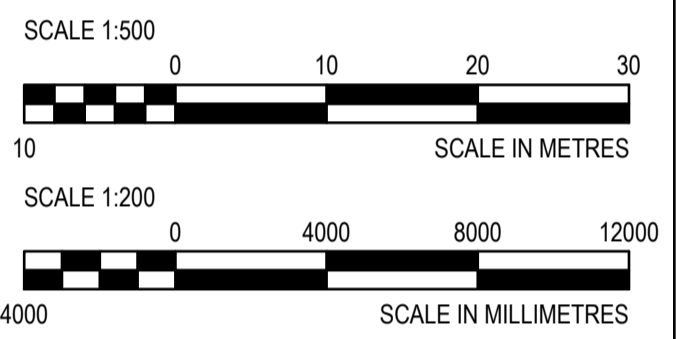
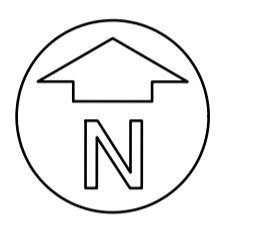
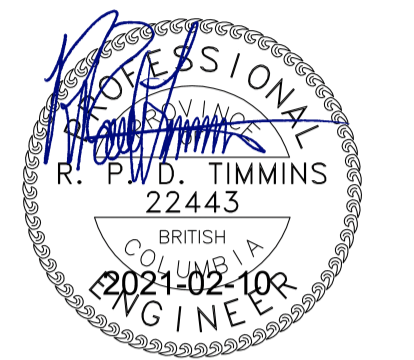
Consultant Signature Box Only
Designed by/Concept par **GD**
Drawn by/Dessine par **HCP / HM**
PWGSC Project Manager/Administrateur de Projets TPSGC

Drawing title/Titre du dessin
LEGENDS, SCHEDULES AND DRAWING LIST
Project No./No. du projet
2018552
Sheet/ Feuille
M0.01
Revision no./ La Révision no.





WSP PROJ # - 191-03445-00



5.	ISSUED FOR TENDER	2021-02-01
4.	100%	2021-01-12
3.	TENDER	2020-11-06
2.	70% REVIEW	2020-07-31
1.	REVIEW	2020-06-05
Revision/Revision	Description/Description	Date/Date

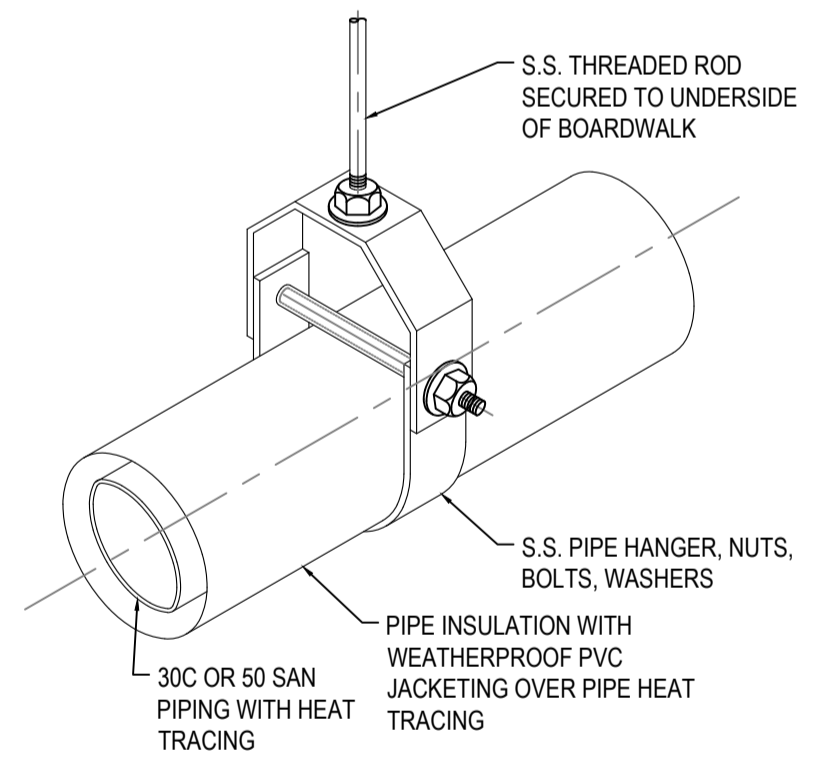
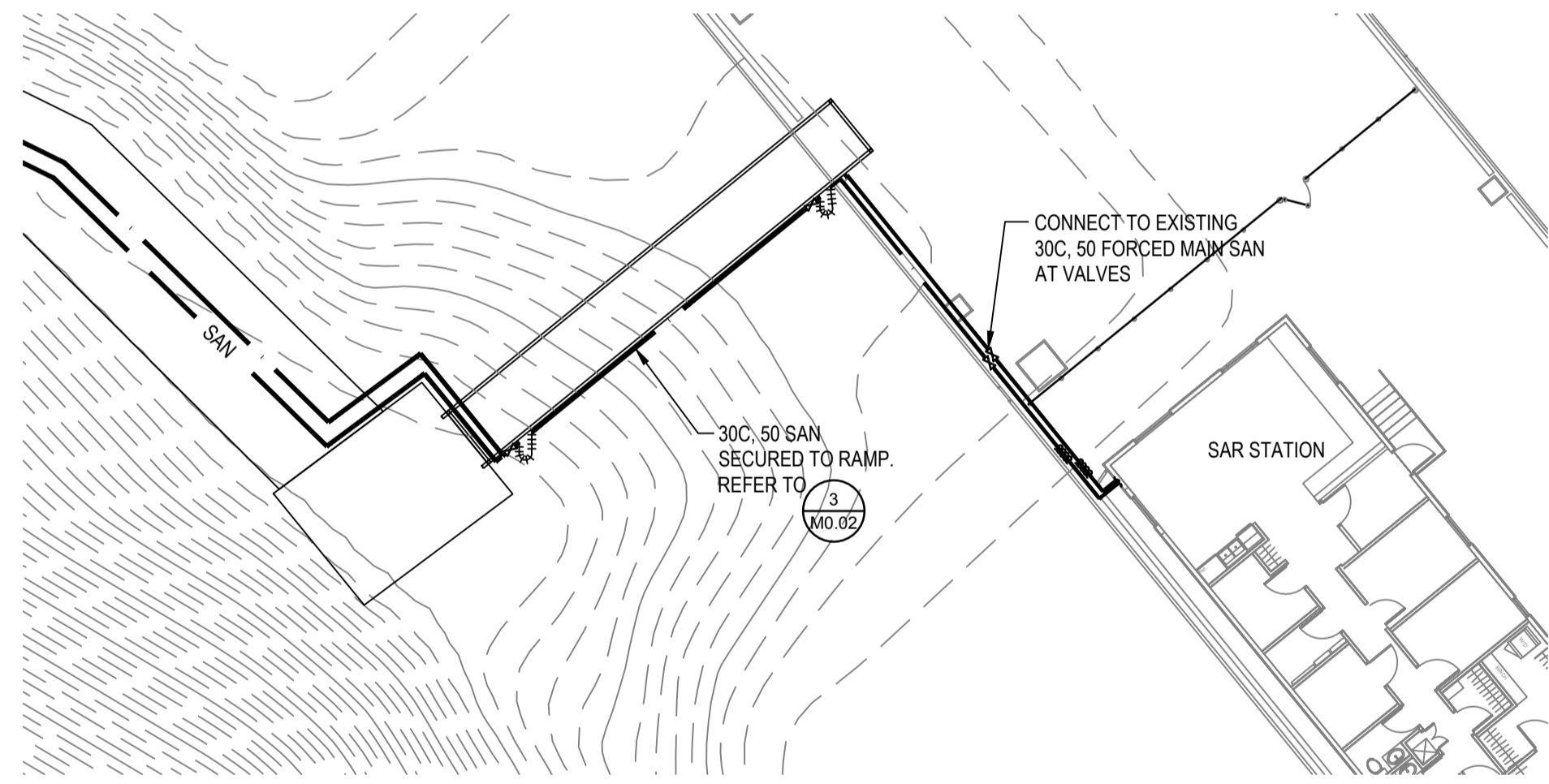
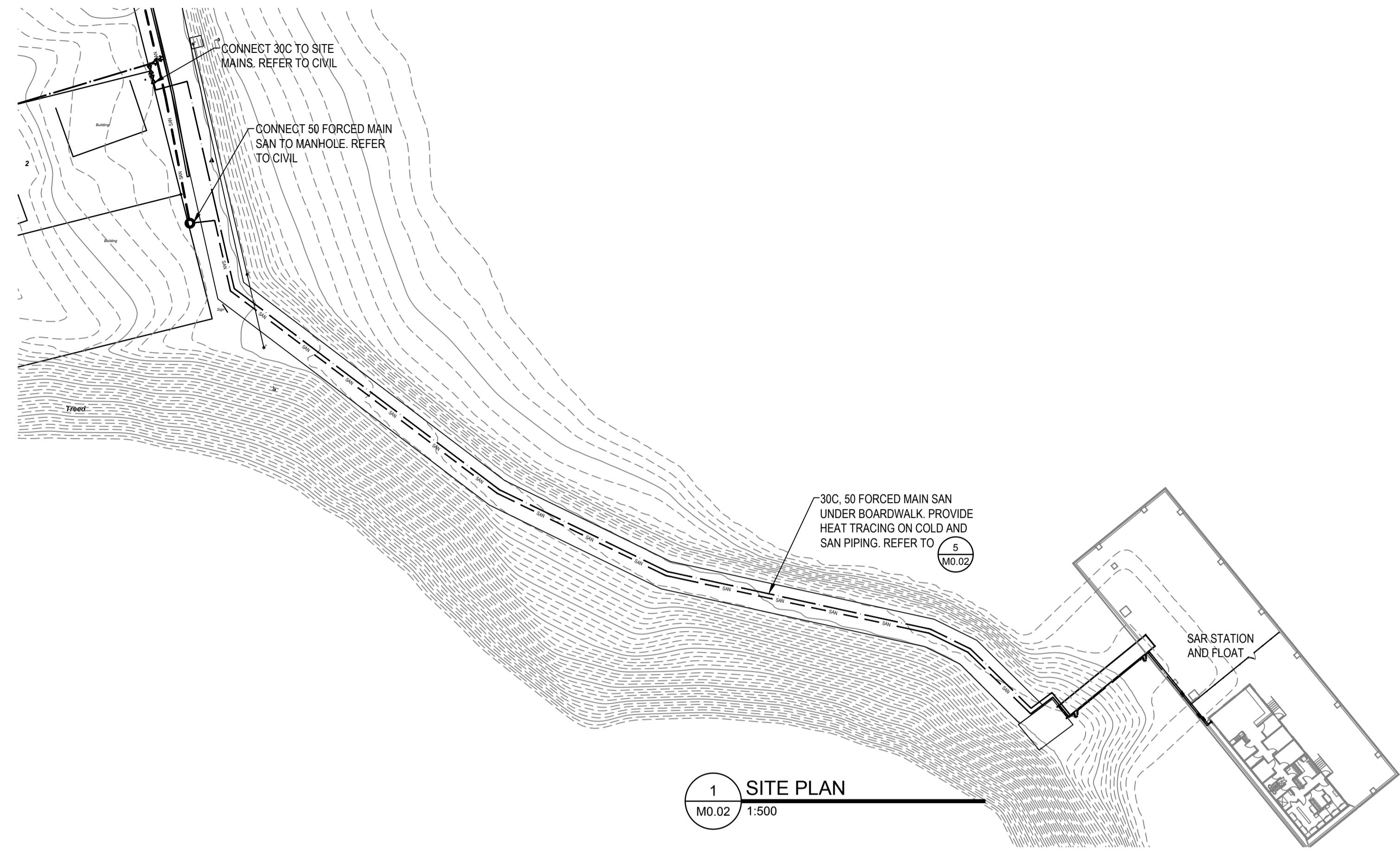
Client/client
FISHERIES AND OCEANS, REAL PROPERTY, SAFETY AND SECURITY
 VANCOUVER, BC
 200-401 BURRARD ST.

Project title/Titre du projet
HARTLEY BAY SAR RESIDENCE & SAR FLOAT SERVICES
 HARTLEY BAY, B.C.

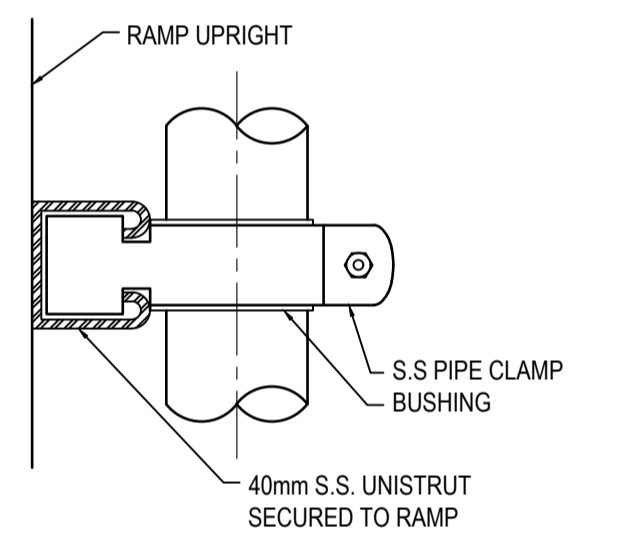
Consultant Signature Box Only
 Designed by/Concept par **PDT**
 Drawn by/Dessiné par **HM**
 PWGSC Project Manager/Administrateur de Projets TPSGC
 PWGSC Regional Manager, Architectural and Engineering Services / Gestionnaire régionale, Services d'architecture et de génie, TPSGC

Drawing title/Titre du dessin
MECHANICAL FLOAT SERVICES PLANS AND DETAILS

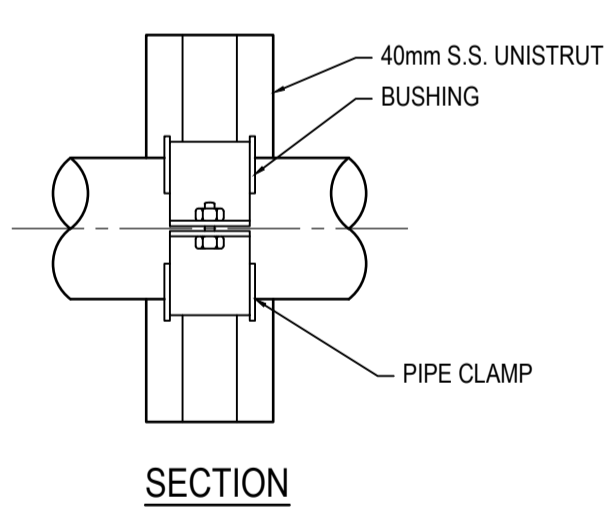
Project No./No. du projet 2018552	Sheet/ Feuille M0.02	Revision no./ La Révision no.
---	--------------------------------	-------------------------------



5 PIPE SUPPORT DETAIL BOARDWALK
 M0.02 SCALE: NTS.



4 PIPE SUPPORT DETAIL RAMP
 M0.02 SCALE: NTS.

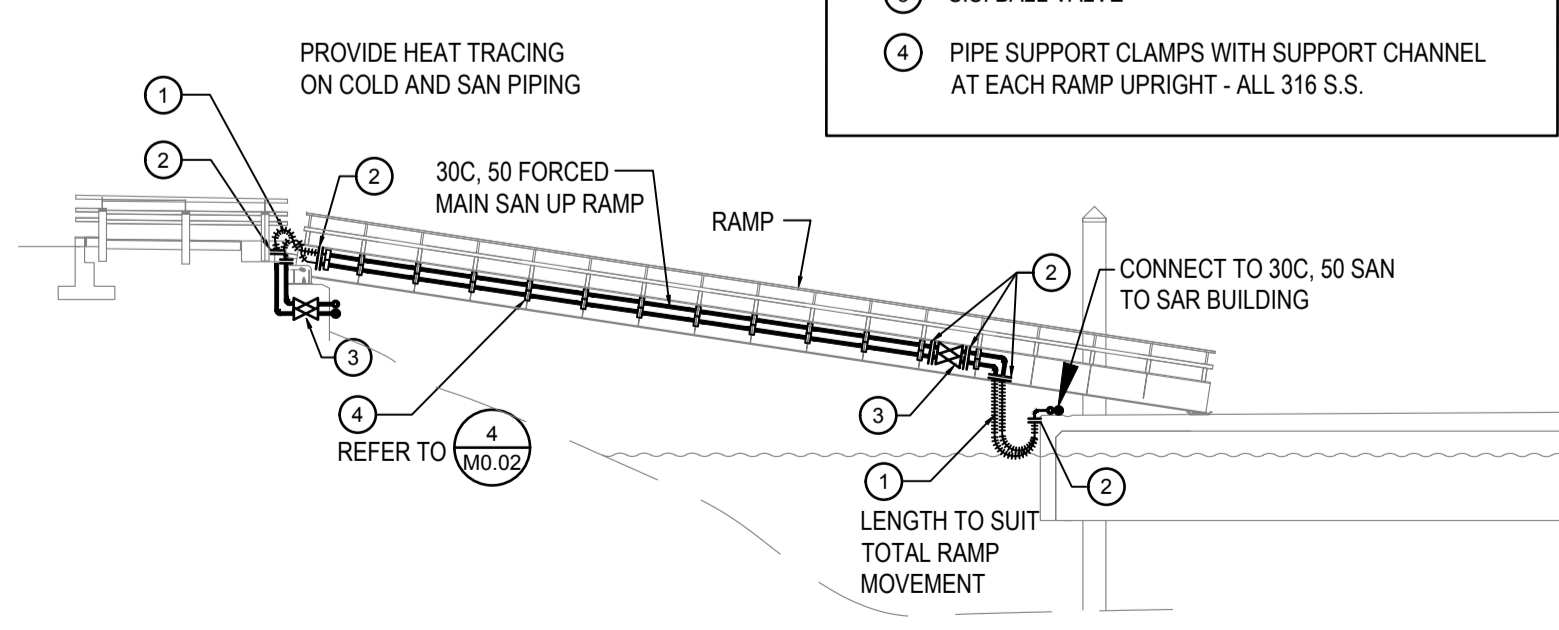


SECTION

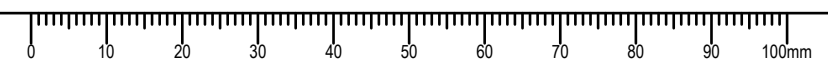
DRAWING LEGEND

—	COLD WATER
- - - SAN	SANITARY PIPE
	FLANGE
∩	UNION
∇	ISOLATION VALVE
	FLEXIBLE PIPE
⊕	DRAWING NOTE
①	REFERENCE CALLOUT

- DRAWING NOTES:**
- 1 FLEXIBLE HOSE CONNECTION
 - 2 S.S. FLANGE
 - 3 S.S. BALL VALVE
 - 4 PIPE SUPPORT CLAMPS WITH SUPPORT CHANNEL AT EACH RAMP UPRIGHT - ALL 316 S.S.

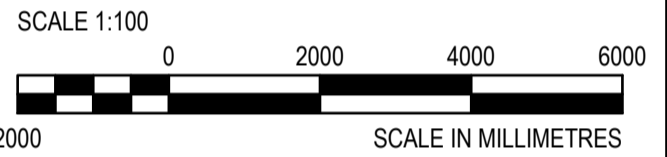


3 RAMP DETAIL
 M0.02 SCALE: NTS.





WSP PROJ # - 191-03446-00



Revision/Revision	Description/Description	Date/Date
5.	ISSUED FOR TENDER	2021-02-01
4.	100%	2021-01-12
3.	100% REVIEW	2020-12-18
2.	95% REVIEW	2020-10-23
1.	60% CD REVIEW	2020-09-23

**FISHERIES AND OCEANS,
REAL PROPERTY,
SAFETY AND SECURITY**

VANCOUVER, BC
219-800 BURRARD ST.

Project title/Titre du projet

**HARTLEY BAY
SAR RESIDENCE
& SAR FLOAT
SERVICES**

HARTLEY BAY, B.C.

Consultant Signature Box Only

Designed by/Concept par
GD

Drawn by/Dessiné par
HCP / HM

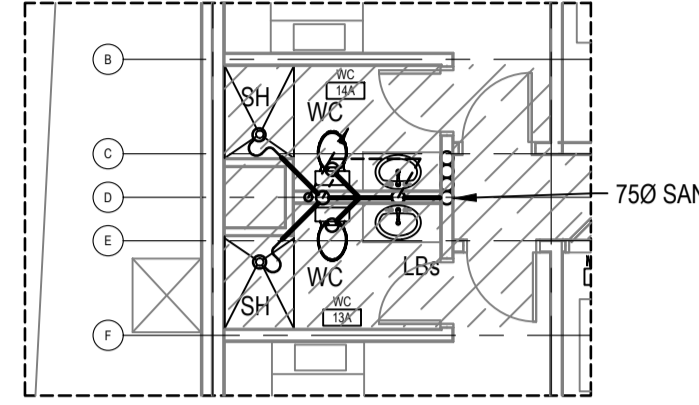
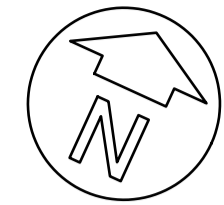
PWGSC Project Manager/Administrateur de Projets TPSGC
--

PWGSC Regional Manager, Architectural and Engineering Services/
Gestionnaire régionale, Services d'architecture et de génie, TPSGC
--

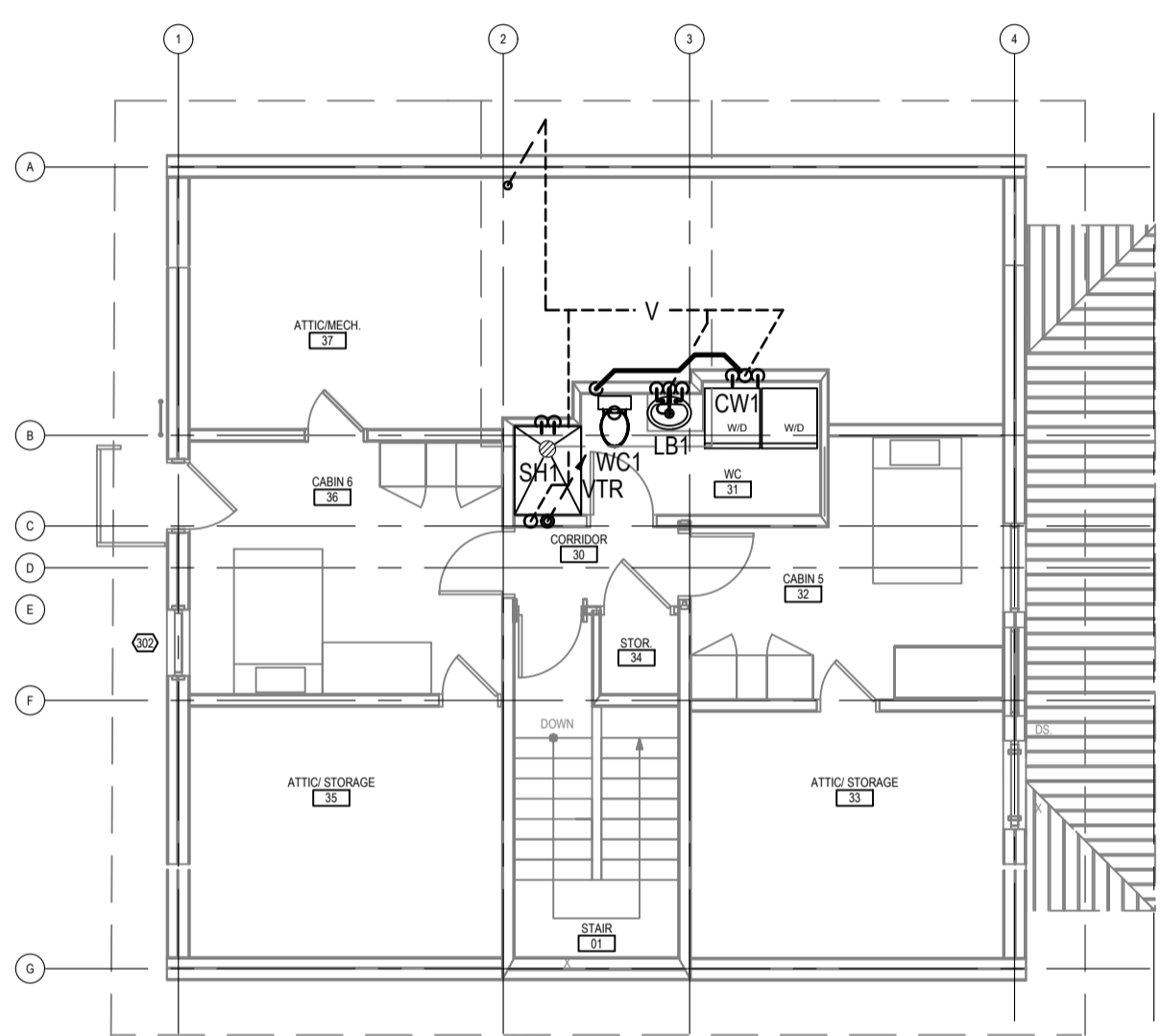
Drawing title/Titre du dessin

**PLUMBING
FLOOR PLANS
AND DETAILS**

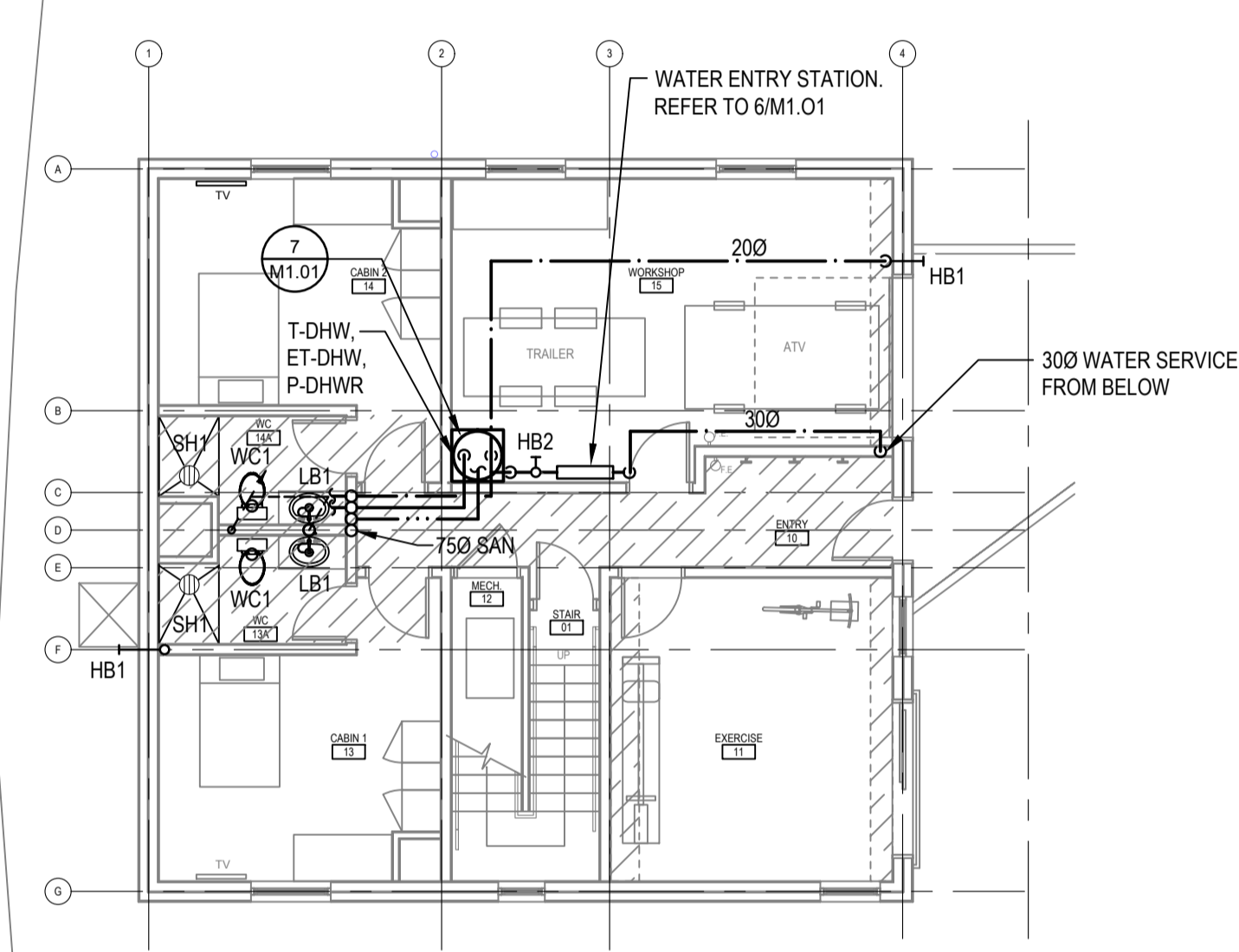
Project No./No. du projet	Sheet/ Feuille	Revision no./ La Révision no.
2018552	M1.01	



**LEVEL 1 WASHROOM
HIGH LEVEL PLAN**
M1.01 1:100

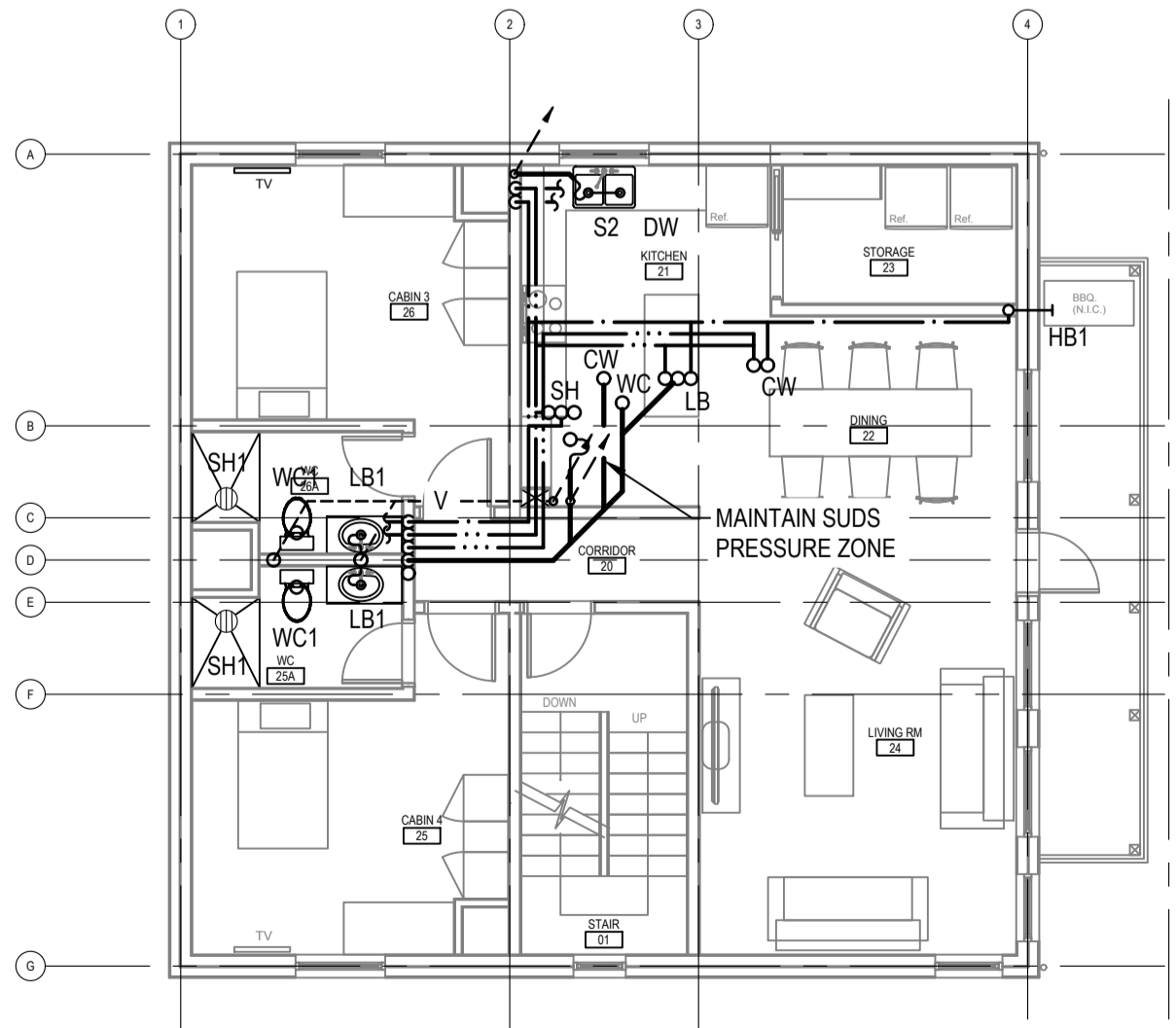


LEVEL 3 PLAN
M1.01 1:100

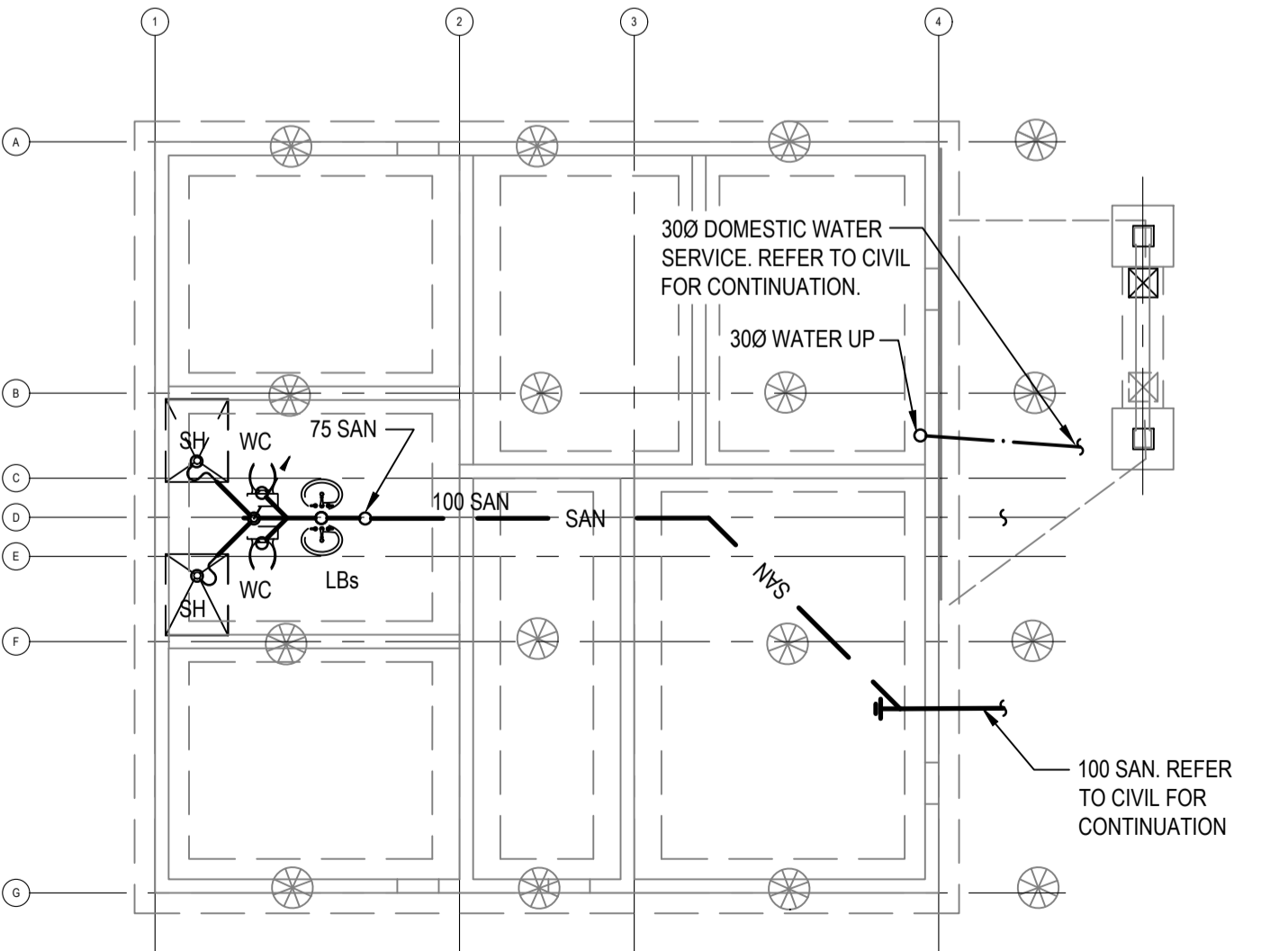


LEVEL 1 PLAN
M1.01 1:100

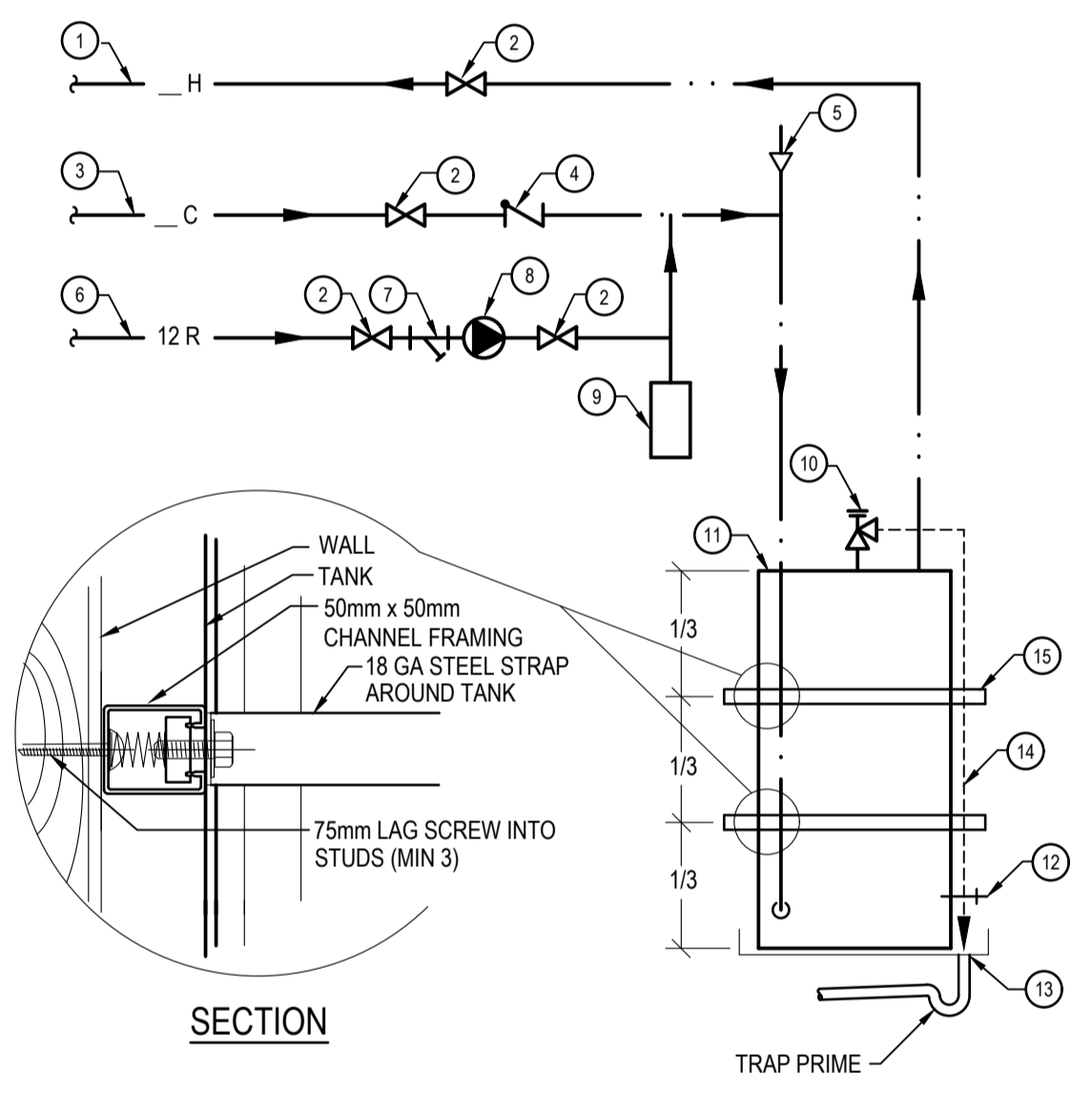
NOTE:
RUN SANITARY AT 2% SLOPE
UNLESS OTHERWISE NOTED.



LEVEL 2 PLAN
M1.01 1:100



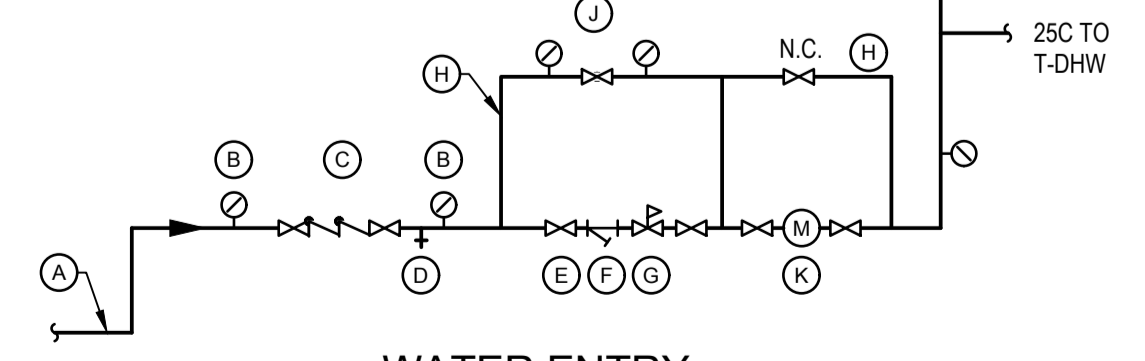
UNDERFLOOR PLAN
M1.01 1:100



**SCHEMATIC
DHW TANK**
M1.01 SCALE: NTS

- 1 DOMESTIC HOT WATER SUPPLY
- 2 VALVE
- 3 COLD WATER SUPPLY
- 4 CHECK VALVE
- 5 VACUUM RELIEF VALVE
- 6 DOMESTIC HOT WATER RECIRCULATION
- 7 STRAINER
- 8 ALL BRONZE PUMP (P-DHWR)
- 9 DIAPHRAGM TYPE PRE-PRESSURIZED EXPANSION TANK (ET-DHW)
- 10 TEMPERATURE & PRESSURE RELIEF VALVE
- 11 DOMESTIC HOT WATER TANK (T-DHW)
- 12 HOSE BIBB
- 13 25mm DRAIN PAN, PIPED TO DRAIN
- 14 T & P RELIEF DISCHARGES DIRECTLY OVER DRAIN
- 15 SEISMIC RESTRAINT, ANCHORED TO WALL, TYPX2 (SEE INSET).

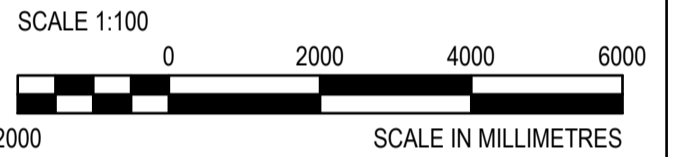
- A 300C DOMESTIC WATER SERVICE (35.8 FU)
- B PRESSURE GAUGE WITH COCK, TYP.
- C 300 PREMISE BACKFLOW PREVENTOR, (DCVA)
- D 20 HOSE BIBB
- E ISOLATION VALVE, TYP.
- F STRAINER
- G PRV
- H 30 BYPASS
- J GLOBE VALVE, (N.C.)
- K WATER METER



**WATER ENTRY
SYSTEM SCHEMATIC**
M1.01 SCALE: NTS



WSP PROJ # - 191-03446-00



5.	ISSUED FOR TENDER	2021-02-01
4.	100%	2021-01-12
3.	100% REVIEW	2020-12-18
2.	95% REVIEW	2020-10-23
1.	60% CD REVIEW	2020-09-23
	Revision/Description	Date/Date

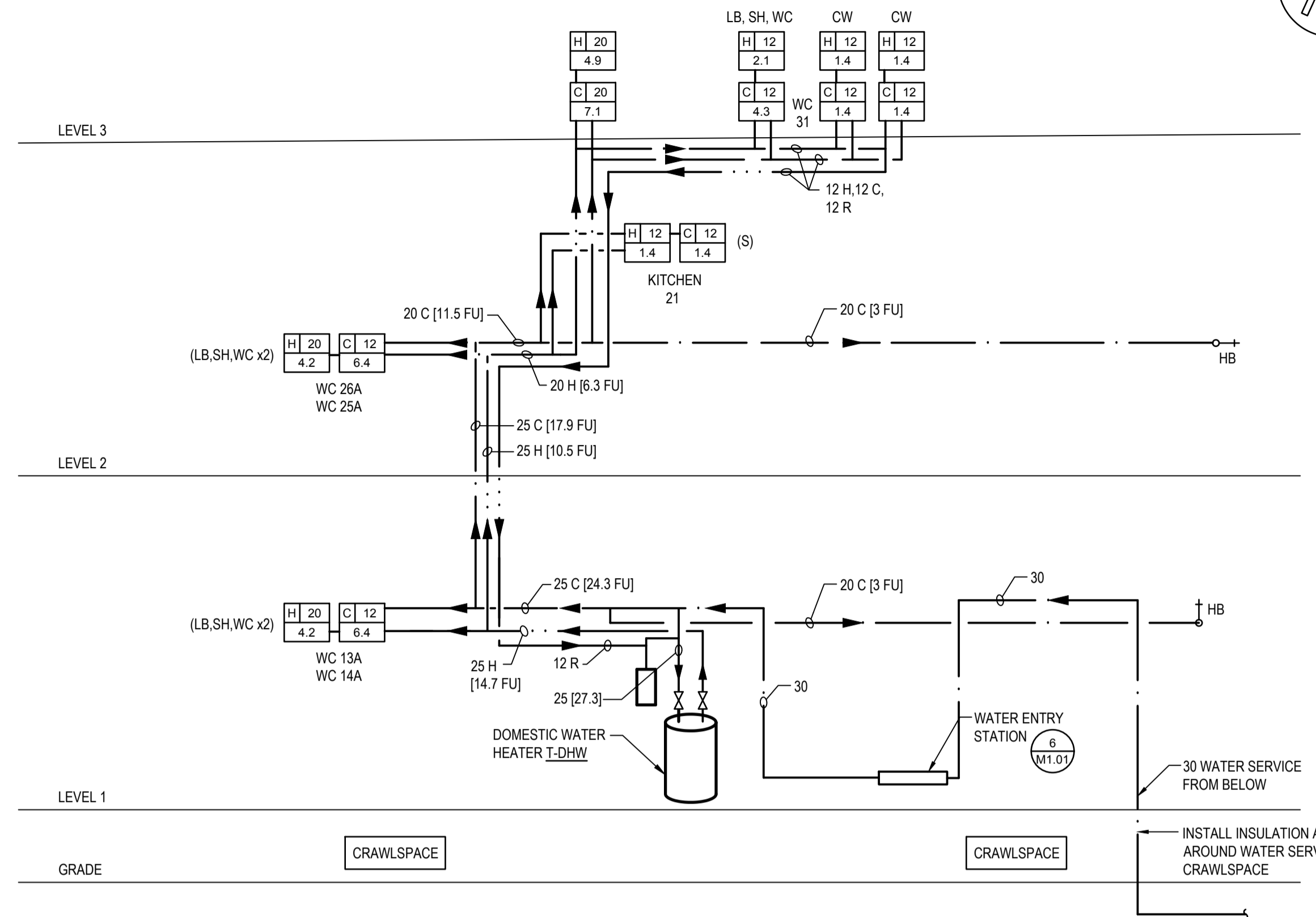
Client/Client: FISHERIES AND OCEANS, REAL PROPERTY, SAFETY AND SECURITY
VANCOUVER, BC
219-800 BARRARD ST.

Project title/Titre du projet: HARTLEY BAY SAR RESIDENCE & SAR FLOAT SERVICES
HARTLEY BAY, B.C.

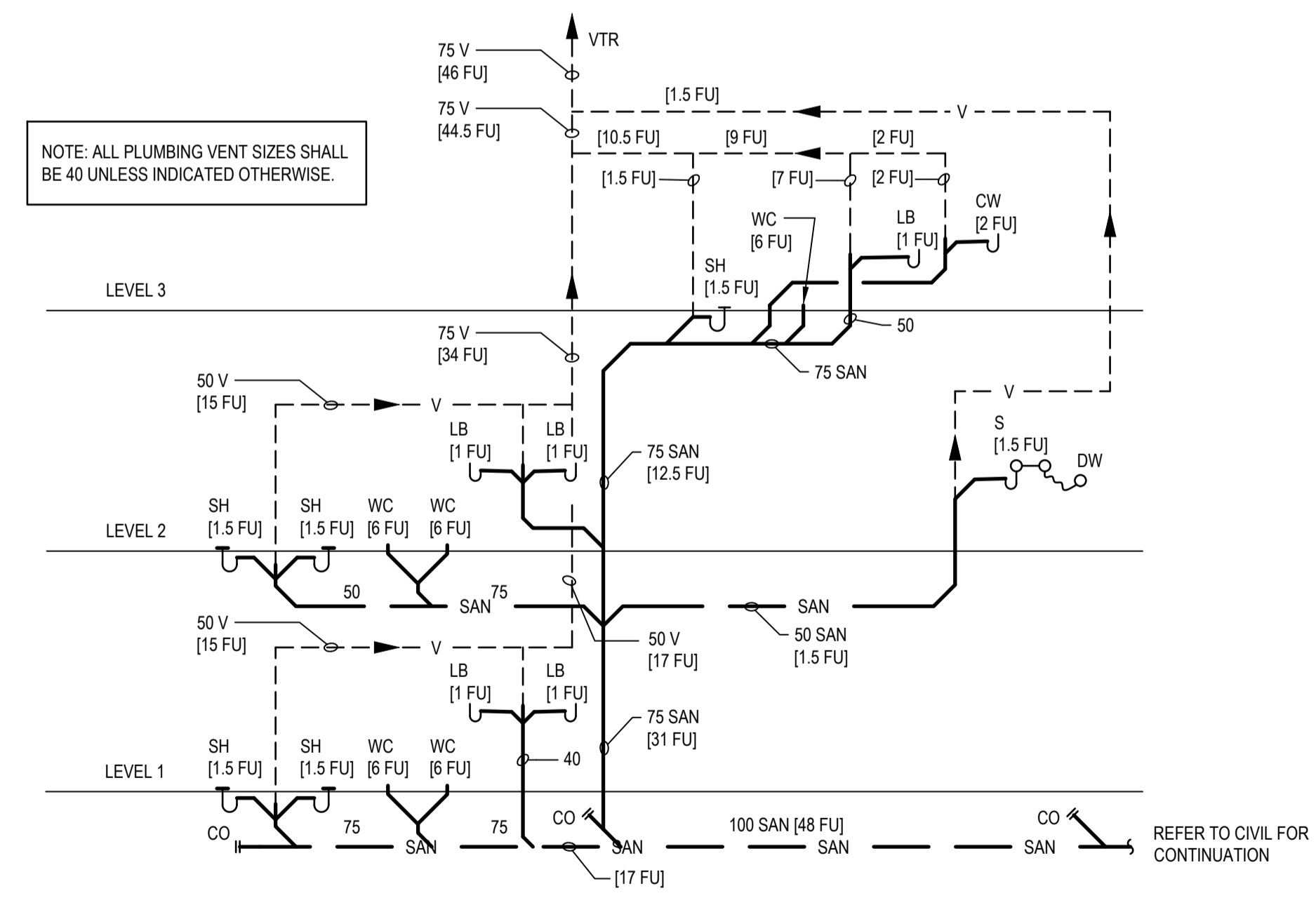
Consultant Signature Box Only
Designed by/Concept par: GD
Drawn by/Dessine par: HCP / HM
PWGSC Project Manager/Administrateur de Projets TPSGC: --
PWGSC Regional Manager, Architectural and Engineering Services/ Gestionnaire régionale, Services d'architectural et de génie, TPSGC: --

Drawing title/Titre du dessin: PLUMBING SCHEMATICS

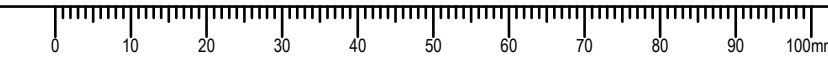
Project No./No. du projet: 2018552	Sheet/ Feuille: M1.02	Revision no./ La Révision no.: --
------------------------------------	-----------------------	-----------------------------------

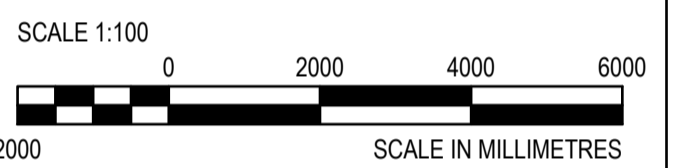
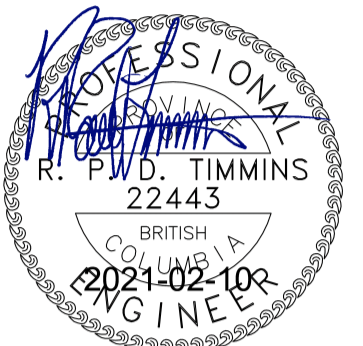


1 DOMESTIC WATER SCHEMATIC
M1.02 SCALE: N.T.S.



2 SANITARY PIPING SCHEMATIC
M1.02 SCALE: N.T.S.





Revision/Revision	Description/Description	Date/Date
5.	ISSUED FOR TENDER	2021-02-01
4.	100%	2021-01-12
3.	100% REVIEW	2020-12-18
2.	95% REVIEW	2020-10-23
1.	60% CD REVIEW	2020-09-23

**FISHERIES AND OCEANS,
REAL PROPERTY,
SAFETY AND SECURITY**

**VANCOUVER, BC
219-800 BURRARD ST.**

Project title/Titre du projet

**HARTLEY BAY
SAR RESIDENCE
& SAR FLOAT
SERVICES**

HARTLEY BAY, B.C.

Consultant Signature Box Only

Designed by/Concept par
GD

Drawn by/Dessiné par
HCP / HM

PWGSC Project Manager/Administrateur de Projets TPSGC

PWGSC Regional Manager, Architectural and Engineering Services/
Gestionnaire régionale, Services d'architecture et de génie, TPSGC

Drawing title/Titre du dessin

**HVAC
FLOOR PLANS
AND DETAILS**

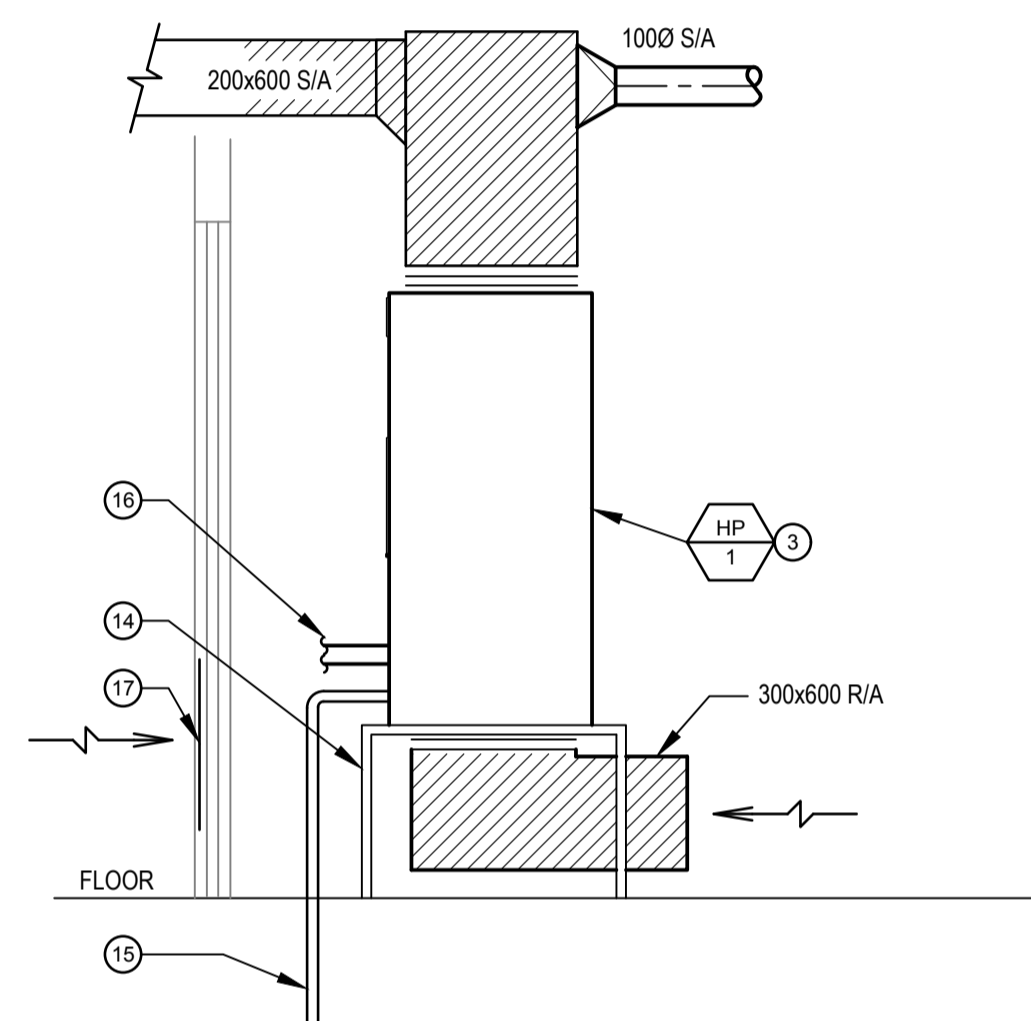
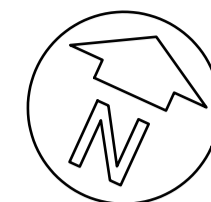
Project No./No. du projet

2018552

Sheet/ Feuille

M2.01

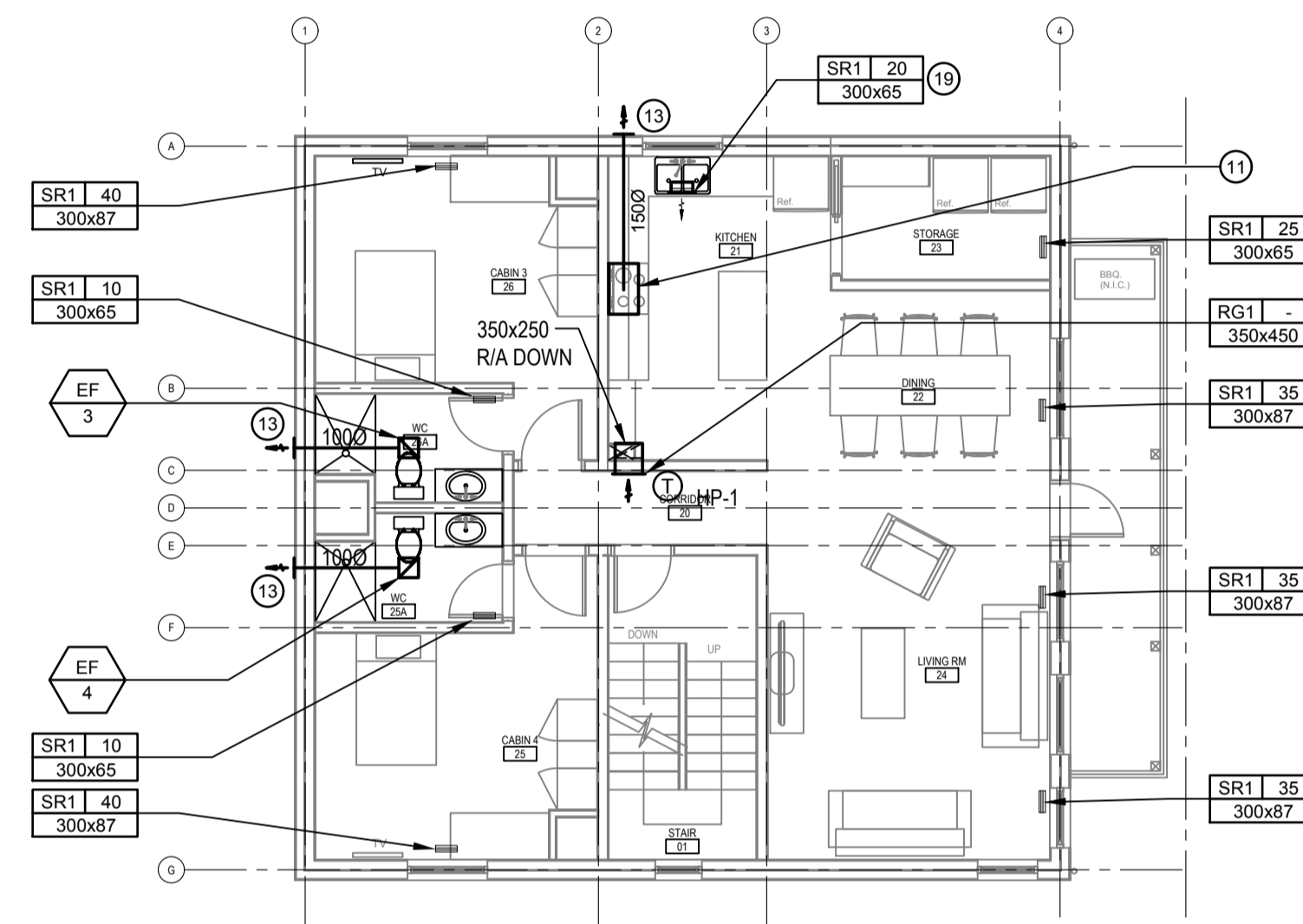
Revision no./
La Révision
no.



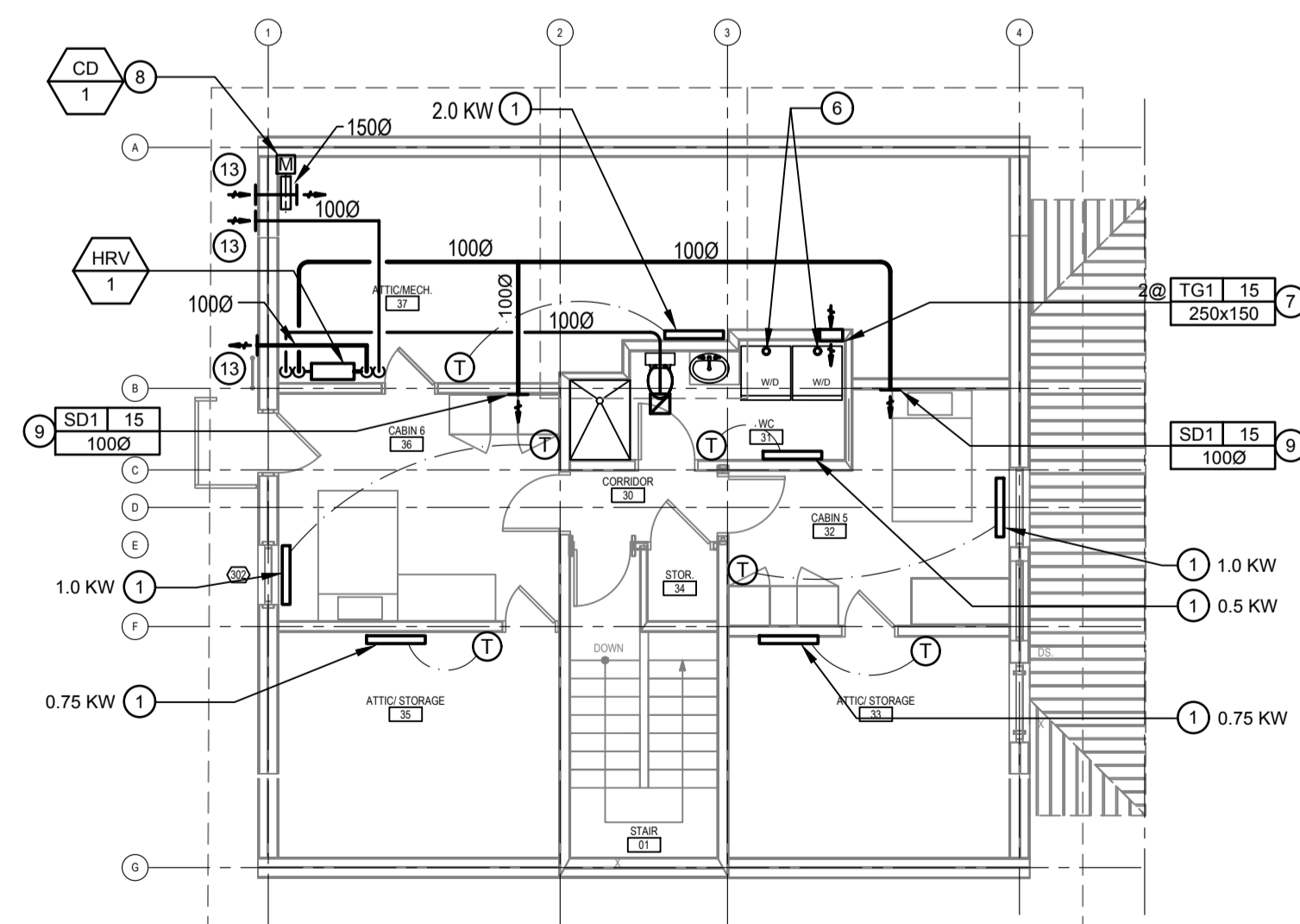
4 SECTION
M2.01 1:20

DRAWING NOTES:

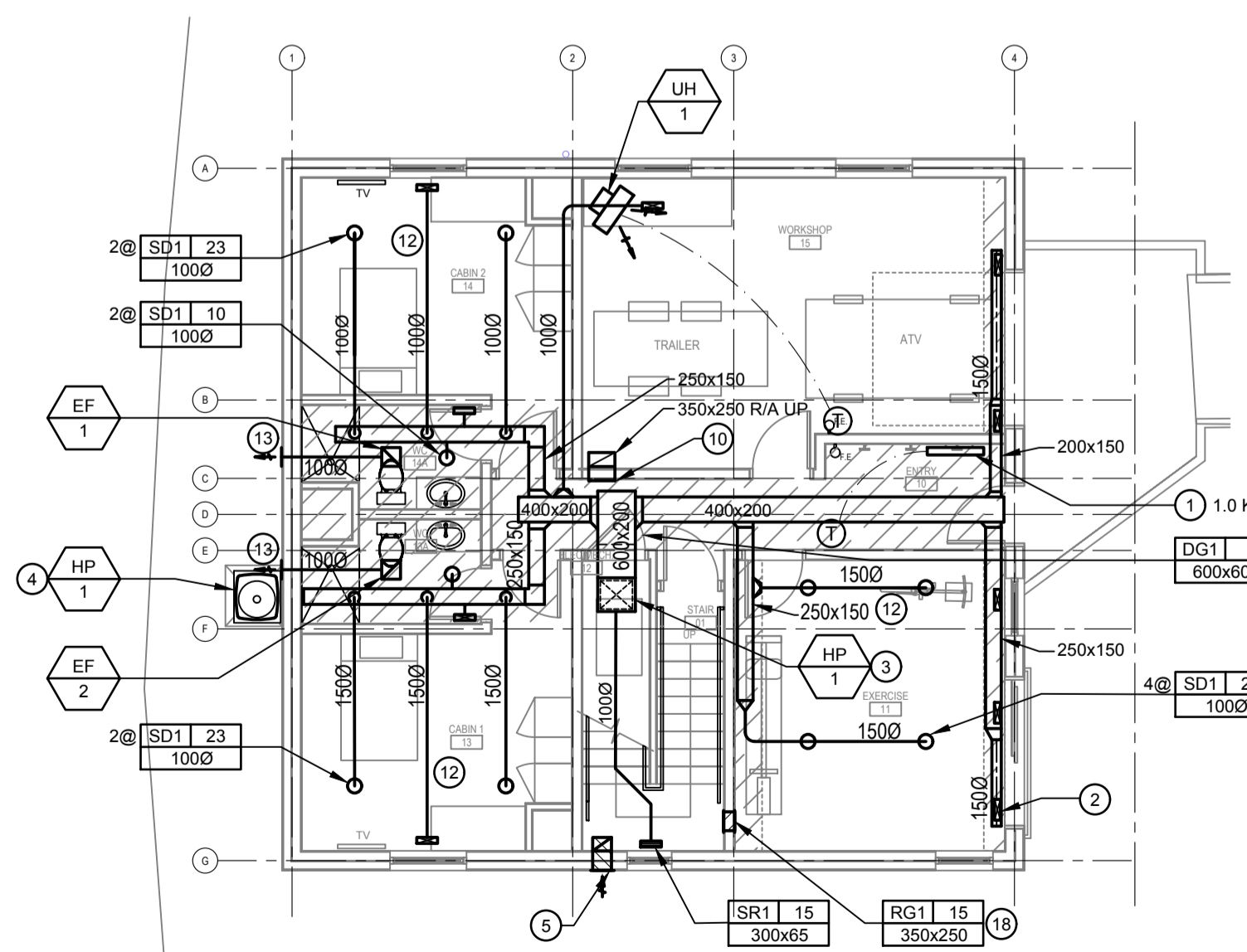
- 1 ELECTRIC BASEBOARD HEATER. REFER TO ELECTRICAL DRAWINGS.
- 2 S/A DUCT UP TO FLOOR GRILLE ABOVE.
- 3 HEAT PUMP INDOOR UNIT. REFER TO SECTION.
- 4 HEAT PUMP OUTDOOR UNIT. ROUTE REFRIGERANT PIPING TO INDOOR UNIT.
- 5 OUTDOOR AIR WALL CAP WITH INSECT SCREEN AND WITHOUT BACKDRAFT DAMPER.
- 6 100Ø DRYER VENT UP TO ROOF CAP.
- 7 LOCATE TRANSFER AIR GRILLES NEAR FLOOR LEVEL.
- 8 INTERLOCK MOTORIZED DAMPER WITH CLOTHES DRYERS.
- 9 LOCATE DIFFUSER HIGH ON WALL.
- 10 TERMINATE OPEN END DUCT IN CEILING RETURN AIR PLENUM.
- 11 COMBINATION RANGE HOOD/MICROWAVE OVEN PROVIDED BY GENERAL CONTRACTOR. REFER TO ARCHITECTURAL DRAWINGS.
- 12 LOCATE BRANCH DUCTS IN JOIST SPACE.
- 13 WALL CAP
- 14 HEAT PUMP INDOOR UNIT SUPPORT STAND
- 15 TERMINATE HEAT PUMP CONDENSATE DRAIN BELOW BUILDING.
- 16 REFRIGERANT PIPING TO OUTDOOR UNIT.
- 17 600x450 DOOR GRILLE.
- 18 GRILLE LOCATED NEAR FLOOR LEVEL.
- 19 LOCATE REGISTER IN CABINET KICKSPACE.



2 LEVEL 2 PLAN
M2.01 1:100



3 LEVEL 3 PLAN
M2.01 1:100



1 LEVEL 1 PLAN
M2.01 1:100

