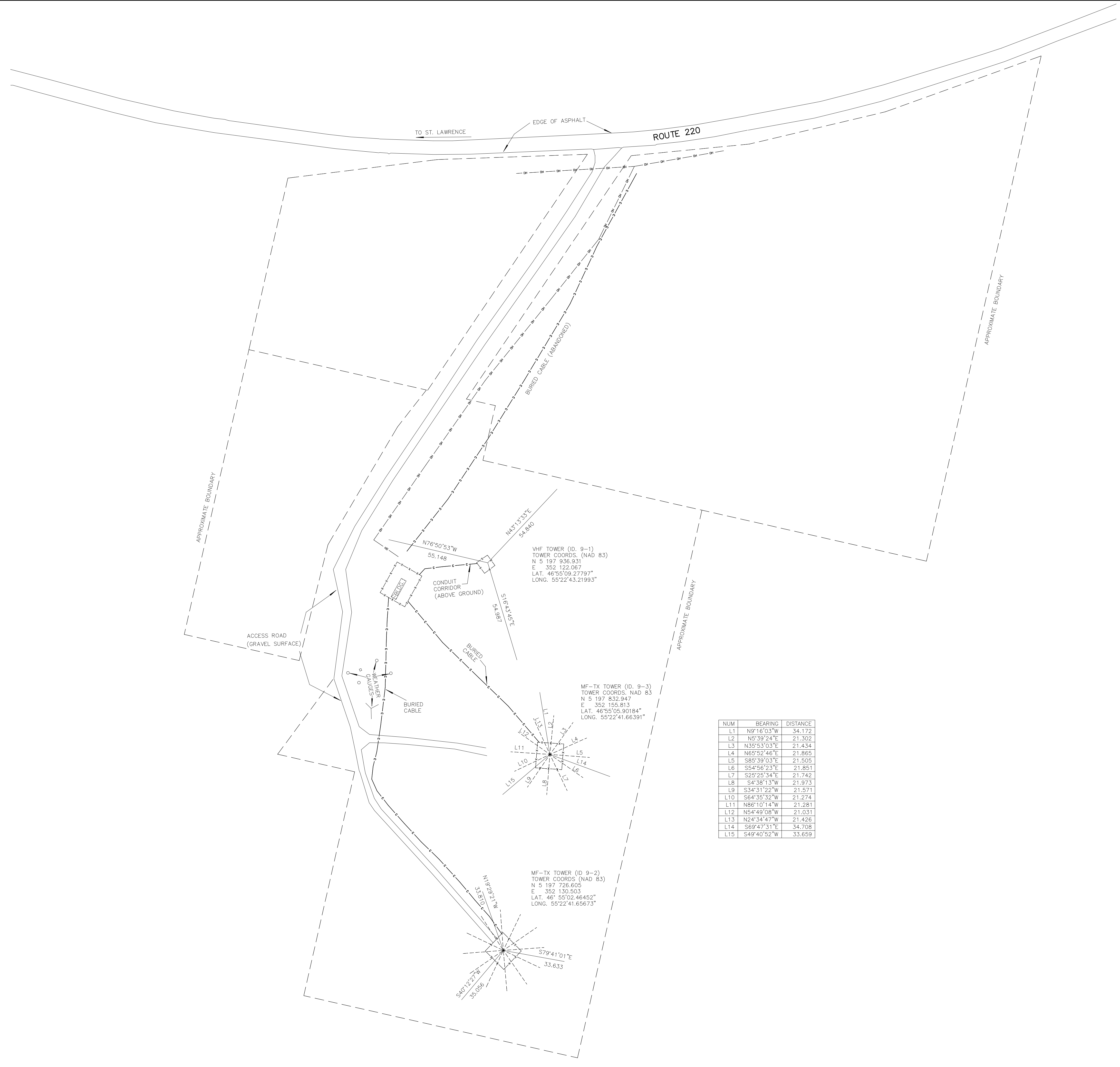
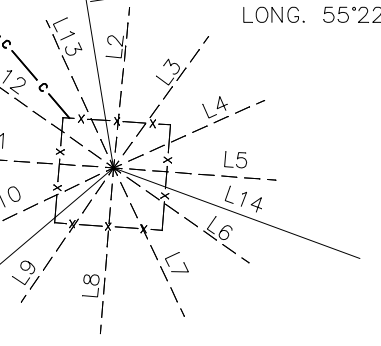


GRID NORTH NAD 83
 MTM ZONE 2, C.M.=56° W



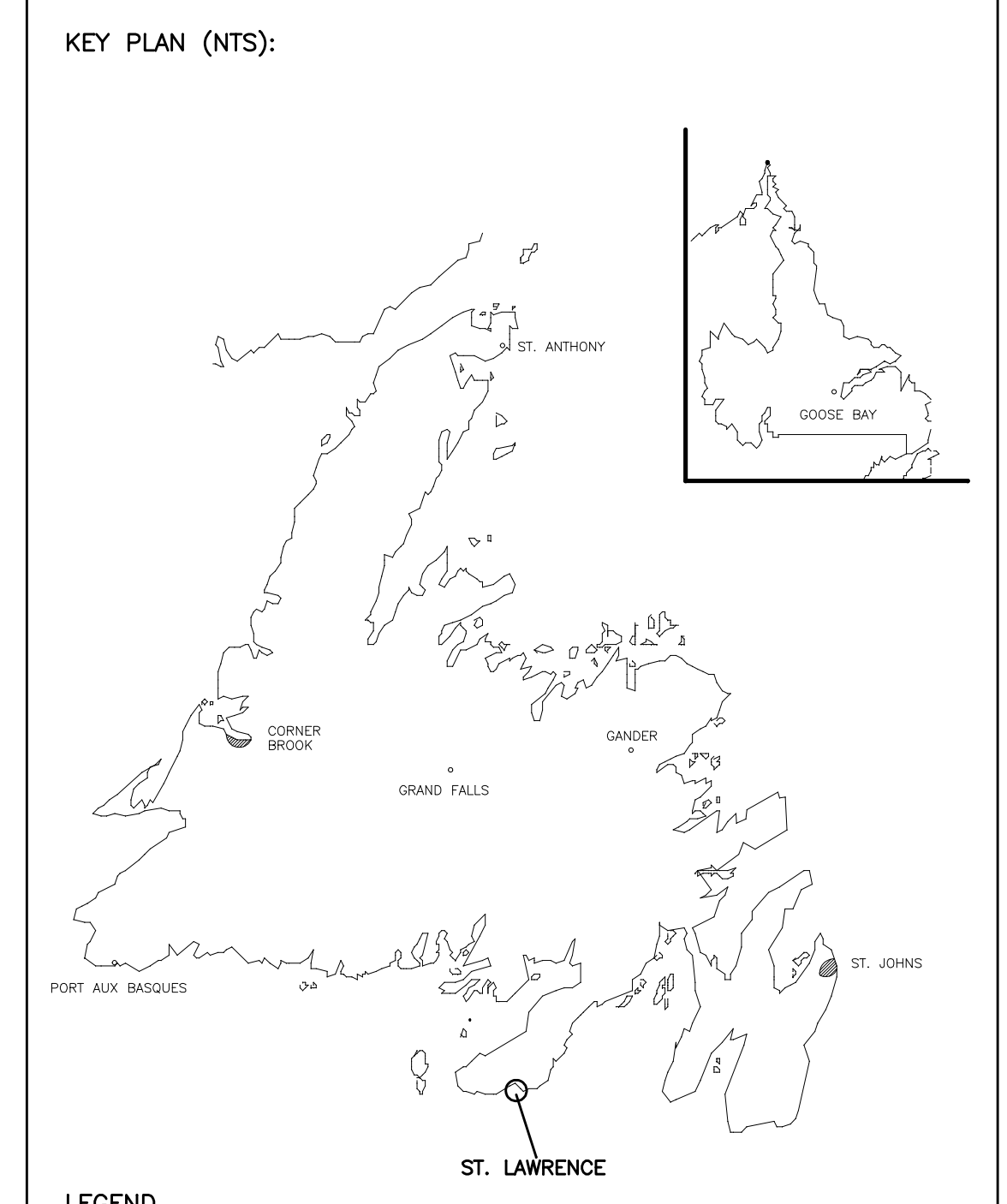
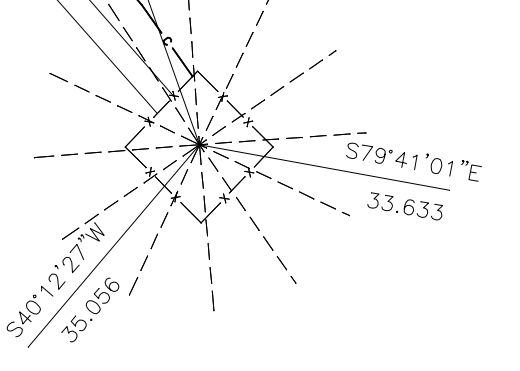
VHF TOWER (ID. 9-1)
 TOWER COORDS. (NAD 83)
 N 5 197 936.931
 E 352 122.067
 LAT. 46°55'09.27797"
 LONG. 55°22'43.21993"

MF-TX TOWER (ID. 9-3)
 TOWER COORDS. (NAD 83)
 N 5 197 832.947
 E 352 155.813
 LAT. 46°55'05.90184"
 LONG. 55°22'41.66391"



NUM	BEARING	DISTANCE
L1	N9°16'03"W	34.172
L2	N5°39'24"E	21.302
L3	N35°53'03"E	21.434
L4	N65°52'46"E	21.865
L5	S85°39'03"E	21.505
L6	S54°56'23"E	21.851
L7	S25°25'34"E	21.742
L8	S4°38'13"W	21.973
L9	S34°31'22"W	21.571
L10	S64°35'32"W	21.274
L11	N86°10'14"W	21.281
L12	N54°49'08"W	21.031
L13	N24°34'47"W	21.426
L14	S69°47'31"E	34.708
L15	S49°40'52"W	33.659

MF-TX TOWER (ID. 9-2)
 TOWER COORDS. (NAD 83)
 N 5 197 726.605
 E 352 130.503
 LAT. 46°55'02.46452"
 LONG. 55°22'41.65673"



LEGEND

— C —	CABLE
— OH —	OVERHEAD WIRE
— X — X —	FENCE LINE
- - - -	APPROXIMATE BOUNDARY LINE

NOTES:

COORDINATE TABLE NAD 83 CONTROL SURVEY DATABASE			
STATION	NORTHING	EASTING	
76G2604	5 197 437.841	350 725.867	
76G2610	5 198 356.212	351 403.657	
SCALE FACTOR 0.999919			

PROVINCE OF NEWFOUNDLAND
 PERMIT HOLDER
 Class "A"
 This Permit Allows
EDWARDS AND ASSOCIATES LTD.
To practice Professional Engineering in Newfoundland and Labrador Permit No. as issued by REG-NL 00122 which is valid for the year 2011.

SUBCONSULTANT

CONSULTANT

P.O. BOX 158, MARYSTOWN, NL, AOE 2M0
 TEL: 709-279-1990, FAX 709-279-2185

PROJECT

**MF TOWER SITE PLAN
 CCG DFO
 ST. LAWRENCE TX SITE
 ST. LAWRENCE, NL**

DRAWING

DRAWN BY: S.S.	CHECKED BY: I.E.	APPROVED BY: I.E.
MPA PROJECT NO:	DRAWING FILE: 5567.DWG	EAL PROJECT NO.: 5567
DATE: OCTOBER 27, 2011	SCALE: 1:1000	DRAWING NO. 1