



Environment and
Climate Change Canada

Environnement et
Changement climatique Canada

Appendix A: Map Book and Mitigation Measures

Management Plan for Disposal at Sea Sites

Serving Small Craft Harbours Dredging Projects, Gulf of St. Lawrence, New Brunswick

Revised 2020

Prepared by

Marine Programs - Atlantic Region

Environmental Protection Branch

Environment and Climate Change Canada

Disclaimer:

The following maps are intended as supplementary information only and should not be relied upon as a precise indicator of the loading and disposal sites authorized in the Disposal at Sea permits. Where there is a discrepancy between maps and the Disposal at Sea permits, the latter shall take precedence.

REVISION LIST

Revision Date	Site	Description of Change(s)
March 31, 2020	Miller Brook	Change in load site configuration.
June 15, 2020	Saint-Édouard-de-Kent	Change in load site configuration.
July 27, 2020	Pointe-Sapin	Change in load site configuration.

Gloucester and Northumberland County Sites

DISPOSAL SITE MANAGEMENT SUMMARY

DISPOSAL SITE

Site Name Miller Brook D1 & D2
 Site Code CA-AT-D088 & D089

RELATED HARBOUR OR CHANNEL

Site Name Miller Brook Harbour
 Site User DFO-SCH, Tracadie-Sheila

ANNUAL QUANTITY RESTRICTION

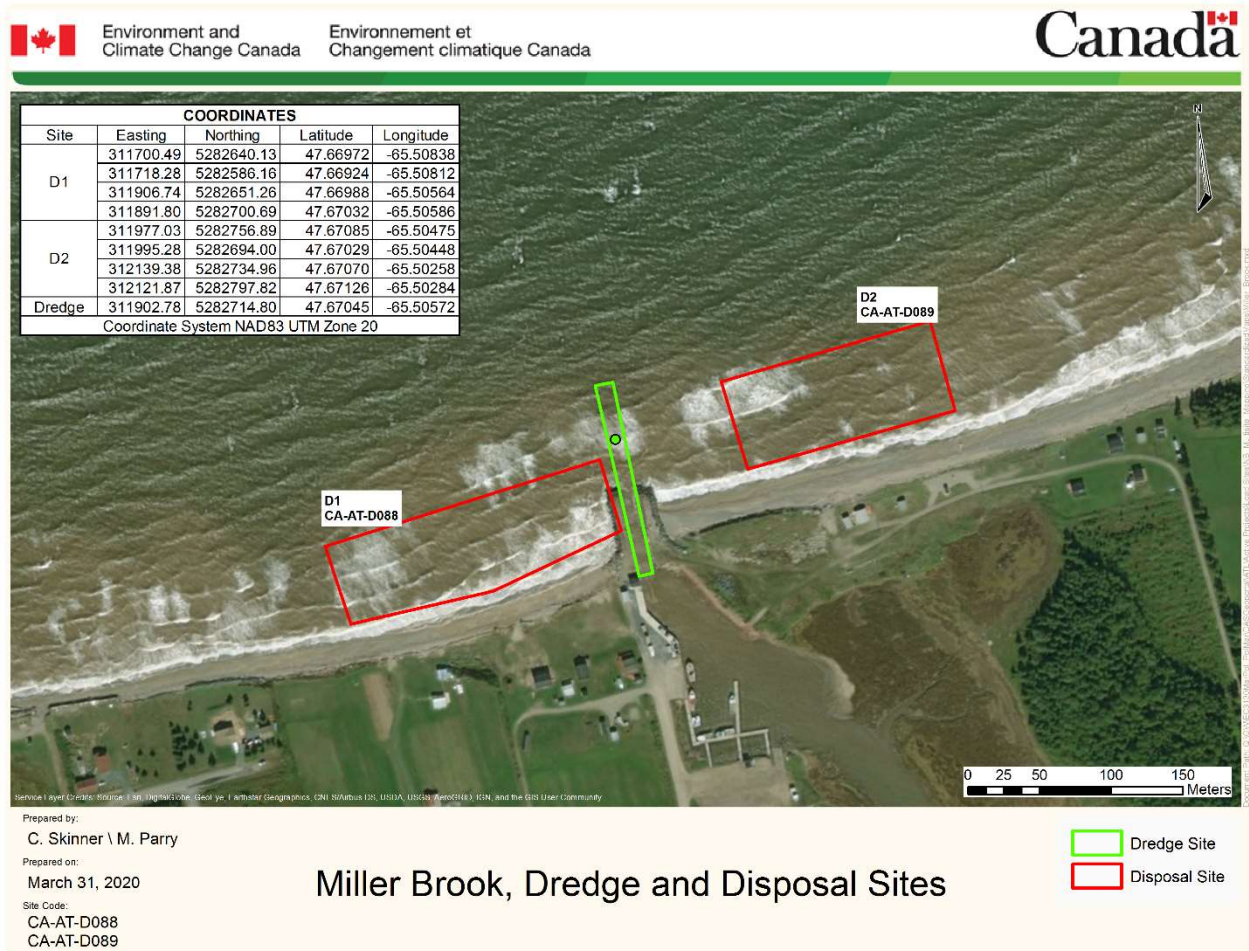
12,000 m³ place measure

ADDITIONAL REQUIREMENTS

- Issue Advance Notification to:
 - ECCC, DFO, and Canadian Coast Guard Marine Communication and Traffic Services
- Record Nighttime Dredging Hours
- Adhere to Mitigation Measures (see Page 2)

EQUIPMENT RESTRICTIONS

Suction Dredge
 Barge-mounted Excavator
 Land-based Heavy Equipment



Mitigation Measures

1. Basic petroleum spill clean-up equipment, e.g., a 250 L oil spill clean-up kit, shall be stored on-site and available for immediate use during execution phase of dredging projects.
2. Dredge crews, dredging related vehicles or other dredging related equipment shall not access beaches, sand spits, dunes, mud flats, or sand flats during any stage of the project.
3. Disposal site D1 (CA-AT-D088):
 - a. Disposal activities shall be restricted to the area within the boundaries illustrated and dredged material shall be placed below the mid-tide line.
 - b. Not to exceed 10,000 cubic metres, place measure.
4. Disposal site D2 (CA-AT-D089):
 - a. Disposal activities shall be restricted to the area within the boundaries illustrated and that portion of the seabed lying below the Lower Low Water, Large Tide elevation.
 - b. Not to exceed 2,000 cubic metres, place measure.

DISPOSAL SITE MANAGEMENT SUMMARY

DISPOSAL SITE

Site Name Pigeon Hill (Fox Dens Gully)
 Site Code CA-AT-D109

RELATED HARBOUR OR CHANNEL

Site Name Pigeon Hill Harbour
 Site User DFO-SCH, Tracadie-Sheila

ANNUAL QUANTITY RESTRICTION

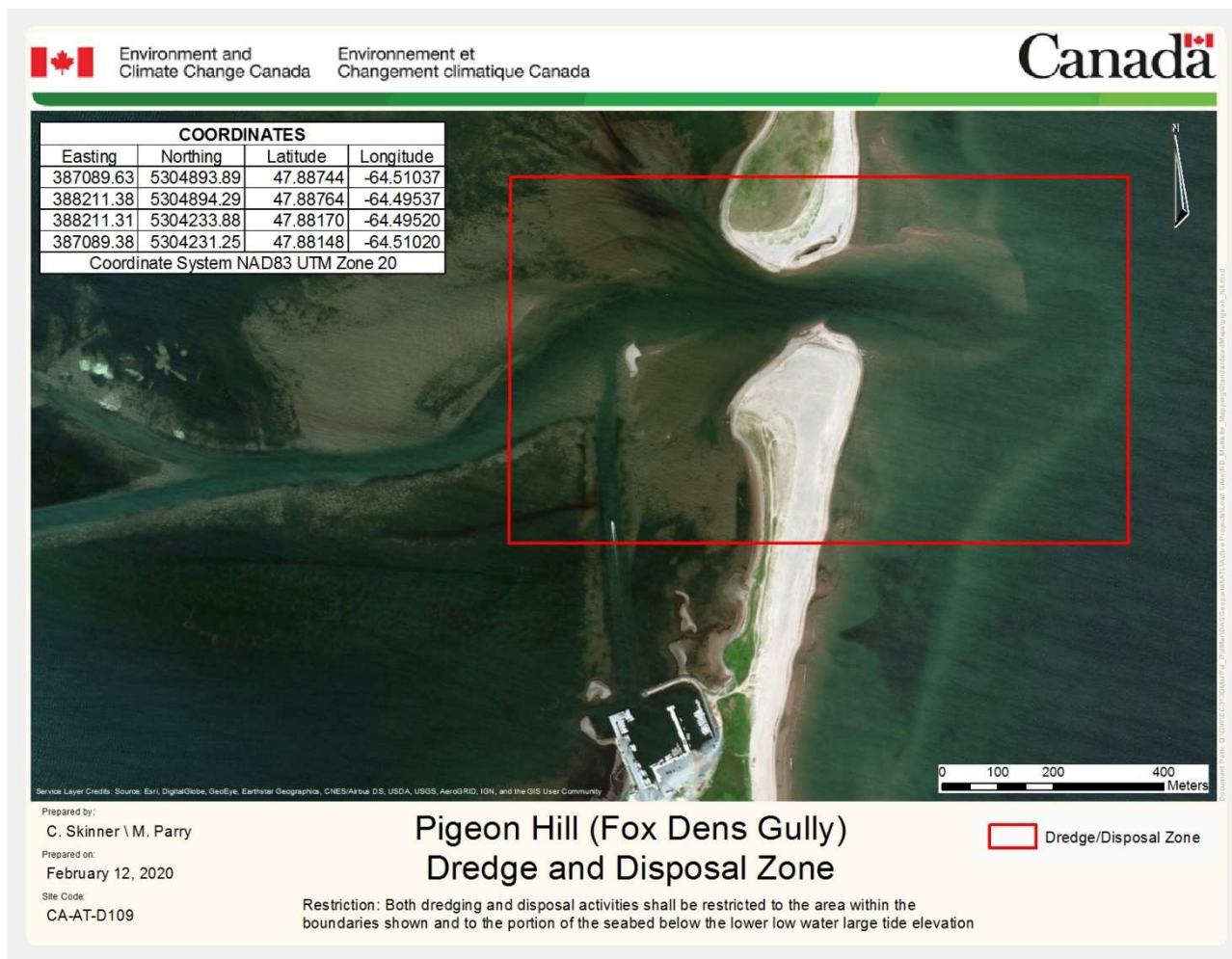
25,000 m³ place measure

ADDITIONAL REQUIREMENTS

- Issue Advance Notification to:
 - ECCC, DFO, and Canadian Coast Guard Marine Communication and Traffic Services
- Record Nighttime Dredging Hours
- Adhere to Mitigation Measures (see Page 2)

EQUIPMENT RESTRICTIONS

Suction Dredge
 Barge-mounted Excavator
 Land-based Heavy Equipment



Mitigation Measures

1. Basic petroleum spill clean-up equipment, e.g., a 250 L oil spill clean-up kit, shall be stored on-site and available for immediate use during execution phase of dredging projects.
2. Dredge crews, dredging related vehicles or other dredging related equipment shall not access beaches, sand spits, dunes, mud flats, or sand flats during any stage of the project.
3. Both dredging and disposal activities shall be restricted to the area within the boundaries illustrated and that portion of the seabed lying below the Lower Low Water, Large Tide elevation.
4. Piping Plover presence or absence shall be confirmed by a qualified observer a maximum of three days prior to initiating dredging activities.

DISPOSAL SITE MANAGEMENT SUMMARY

DISPOSAL SITE

Site Name Sainte-Marie-sur-Mer
 Site Code CA-AT-D141 & D171

RELATED HARBOUR OR CHANNEL

Site Name Sainte-Marie-sur-Mer Harbour
 Site User DFO-SCH, Tracadie-Sheila

ANNUAL QUANTITY RESTRICTION

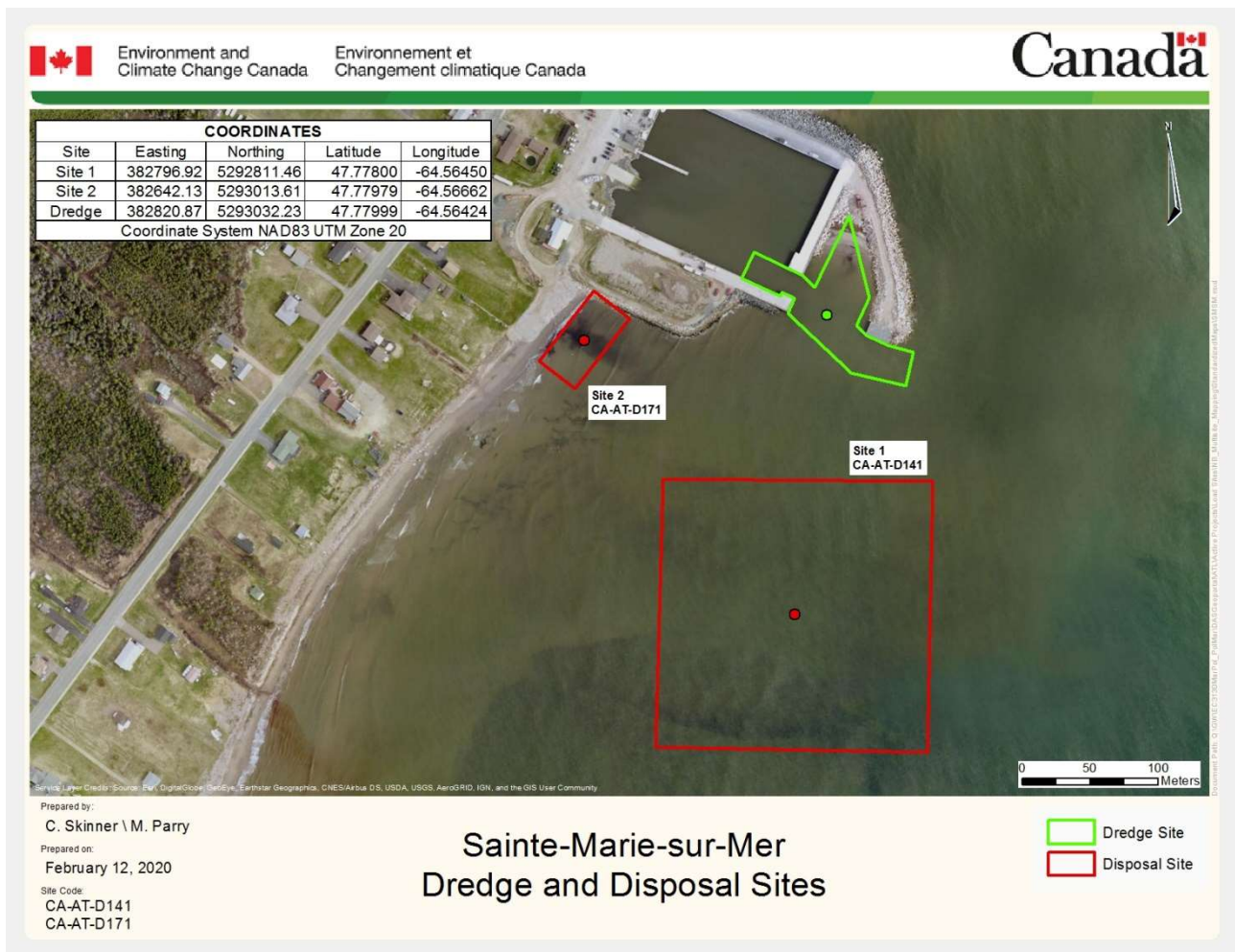
20,000 m³ place measure

ADDITIONAL REQUIREMENTS

- Issue Advance Notification to:
 - ECCC, DFO, and Canadian Coast Guard Marine Communication and Traffic Services
- Record Nighttime Dredging Hours
- Adhere to Mitigation Measures (see Page 2)

EQUIPMENT RESTRICTIONS

Suction Dredge
 Barge-mounted Excavator
 Land-based Heavy Equipment



Mitigation Measures

1. Basic petroleum spill clean-up equipment, e.g., a 250 L oil spill clean-up kit, shall be stored on-site and available for immediate use during execution phase of dredging projects.
2. Disposal Site 1 (CA-AT-D141):
 - a. Dredge crews, dredging related vehicles or other dredging related equipment shall not access beaches, sand spits, dunes, mud flats, or sand flats during any stage of the project.
 - b. Disposal activities shall be restricted to the area within the boundaries illustrated and that portion of the seabed lying below the Lower Low Water, Large Tide elevation.
3. Disposal Site 2 (CA-AT-D171):
 - a. The existing access road shall be used to access the beach.
 - b. Disposal activities shall be restricted to the area within the boundaries illustrated and dredged material shall be placed and reworked to lie below the mid-tide line.
4. Piping Plover presence or absence shall be confirmed by a qualified observer a maximum of three days prior to initiating dredging activities.

Kent County Sites

DISPOSAL SITE MANAGEMENT SUMMARY

DISPOSAL SITE

Site Name Barre-de-Cocagne
 Site Code CA-AT-D006

RELATED HARBOUR OR CHANNEL

Site Name Barre-de-Cocagne Harbour
 Site User DFO-SCH, Tracadie-Sheila

ANNUAL QUANTITY RESTRICTION

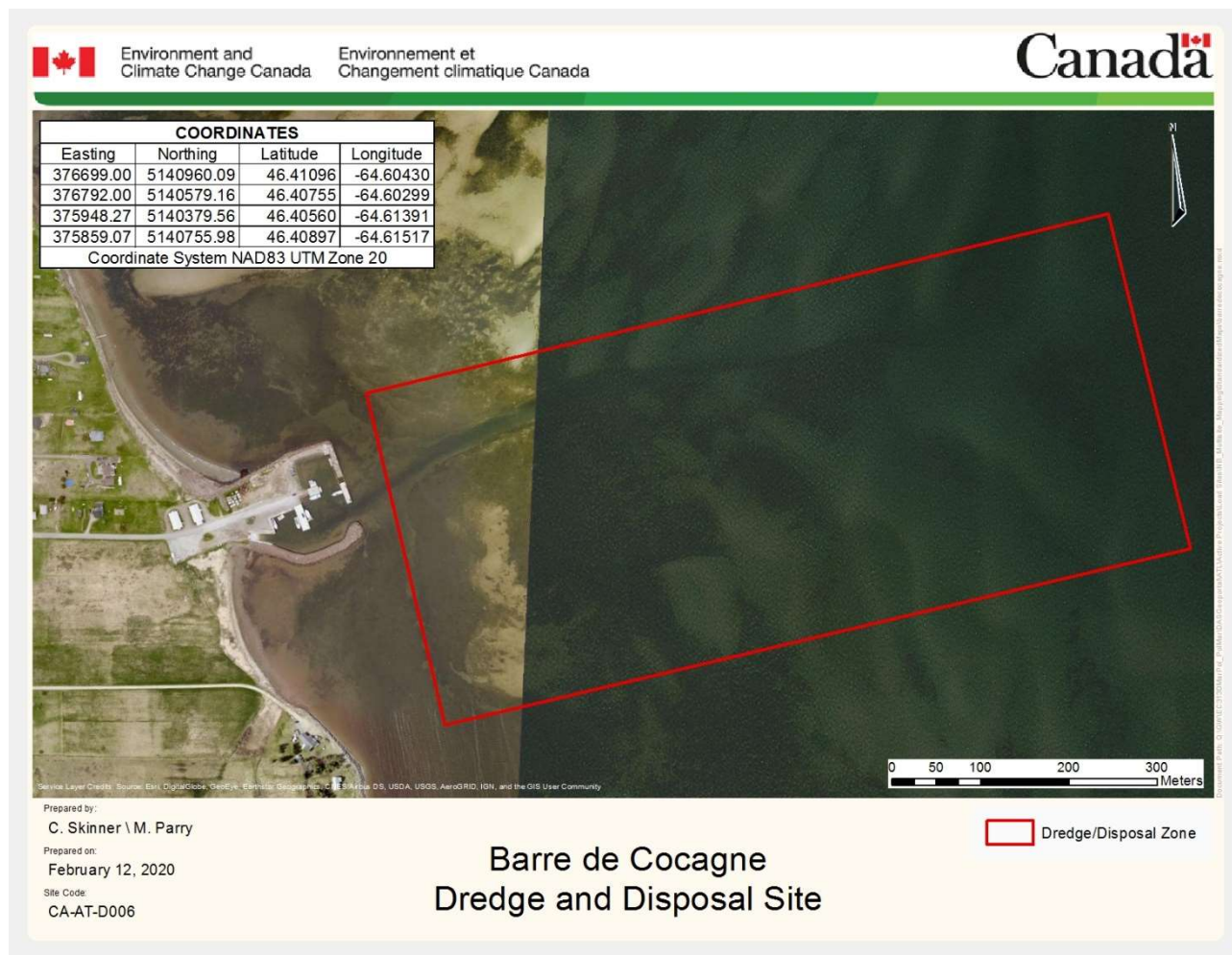
12,000 m³ place measure

ADDITIONAL REQUIREMENTS

- Issue Advance Notification to:
 - ECCC, DFO, and Canadian Coast Guard Marine Communication and Traffic Services
- Record Nighttime Dredging Hours
- Adhere to Mitigation Measures (see Page 2)

EQUIPMENT RESTRICTIONS

Suction Dredge
 Barge-mounted Excavator
 Land-based Heavy Equipment



Mitigation Measures

1. Basic petroleum spill clean-up equipment, e.g., a 250 L oil spill clean-up kit, shall be stored on-site and available for immediate use during execution phase of dredging projects.
2. Disposal activities shall be restricted to the area within the boundaries illustrated and that portion of the seabed lying below the Lower Low Water, Large Tide elevation.
3. Dredge crews, dredging related vehicles or other dredging related equipment shall not access beaches, sand spits, dunes, mud flats, or sand flats during any stage of the project.

DISPOSAL SITE MANAGEMENT SUMMARY

DISPOSAL SITE

Site Name Blacklands Gully
 Site Code CA-AT-D015

RELATED HARBOUR OR CHANNEL

Site Name Cap-de-St-Louis Harbour
 Site User DFO-SCH, Tracadie-Sheila

ANNUAL QUANTITY RESTRICTION

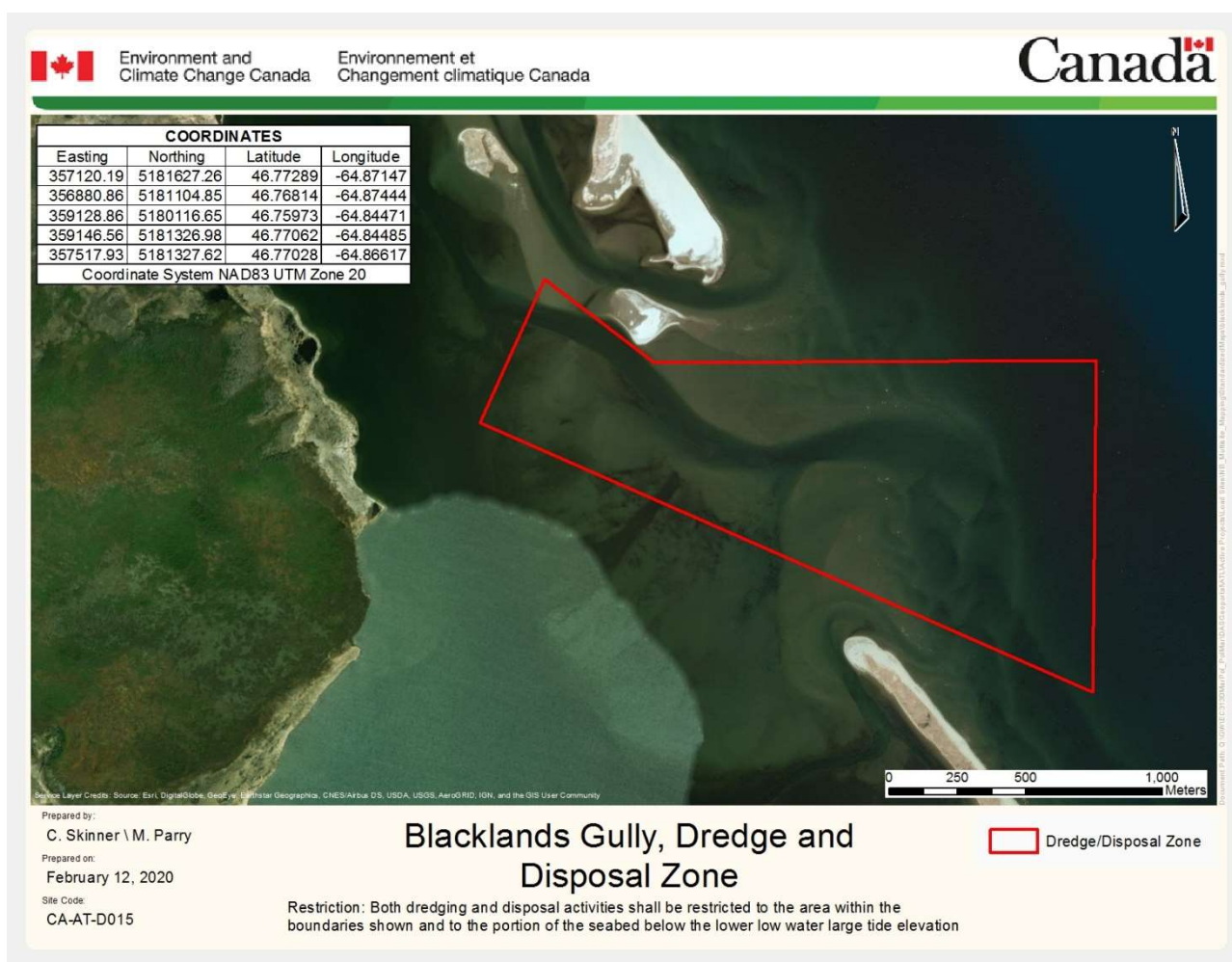
30,000 m³ place measure

EQUIPMENT RESTRICTIONS

Suction Dredge
 Barge-mounted Excavator
 Land-based Heavy Equipment

ADDITIONAL REQUIREMENTS

- Issue Advance Notification to:
 - ECCC, DFO, and Canadian Coast Guard Marine Communication and Traffic Services
 - Parks Canada Agency
- Record Nighttime Dredging Hours
- Adhere to Mitigation Measures (see Page 2)



Mitigation Measures

1. Basic petroleum spill clean-up equipment, e.g., a 250 L oil spill clean-up kit, shall be stored on-site and available for immediate use during execution phase of dredging projects.
2. Dredge crews, dredging related vehicles or other dredging related equipment shall not access beaches, sand spits, dunes, mud flats, or sand flats during any stage of the project.
3. Both dredging and disposal activities shall be restricted to the area within the boundaries illustrated and that portion of the seabed lying below the Lower Low Water, Large Tide elevation.
4. Piping Plover presence or absence shall be confirmed by contacting the Kouchibouguac National Park.

DISPOSAL SITE MANAGEMENT SUMMARY

DISPOSAL SITE

Site Name Cap-des-Caissie
 Site Code CA-AT-D023

RELATED HARBOUR OR CHANNEL

Site Name Cap-des-Caissie Harbour
 Site User DFO-SCH, Tracadie-Sheila

ANNUAL QUANTITY RESTRICTION

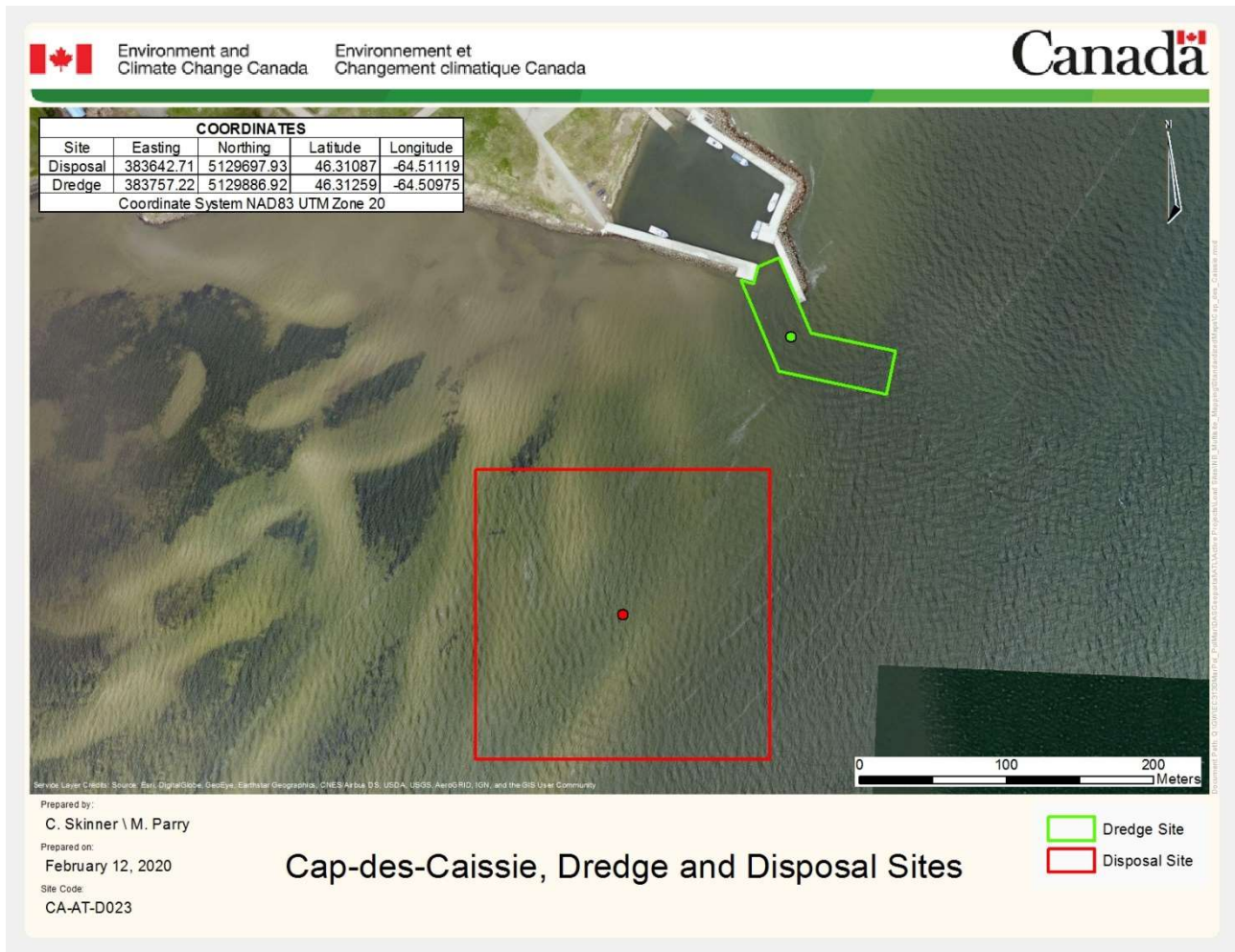
12,000 m³ place measure

ADDITIONAL REQUIREMENTS

- Issue Advance Notification to:
 - ECCC, DFO, and Canadian Coast Guard Marine Communication and Traffic Services
- Record Nighttime Dredging Hours
- Adhere to Mitigation Measures (see Page 2)

EQUIPMENT RESTRICTIONS

Suction Dredge
 Barge-mounted Excavator
 Land-based Heavy Equipment



Mitigation Measures

1. Basic petroleum spill clean-up equipment, e.g., a 250 L oil spill clean-up kit, shall be stored on-site and available for immediate use during execution phase of dredging projects.
2. Disposal activities shall be restricted to the area within the boundaries illustrated and that portion of the seabed lying below the Lower Low Water, Large Tide elevation.
3. Dredge crews, dredging related vehicles or other dredging related equipment shall not access beaches, sand spits, dunes, mud flats, or sand flats during any stage of the project.

DISPOSAL SITE MANAGEMENT SUMMARY

DISPOSAL SITE

Site Name Cap-Lumière
 Site Code CA-AT-D022

RELATED HARBOUR OR CHANNEL

Site Name Cap-Lumière Harbour
 Site User DFO-SCH, Tracadie-Sheila

ANNUAL QUANTITY RESTRICTION

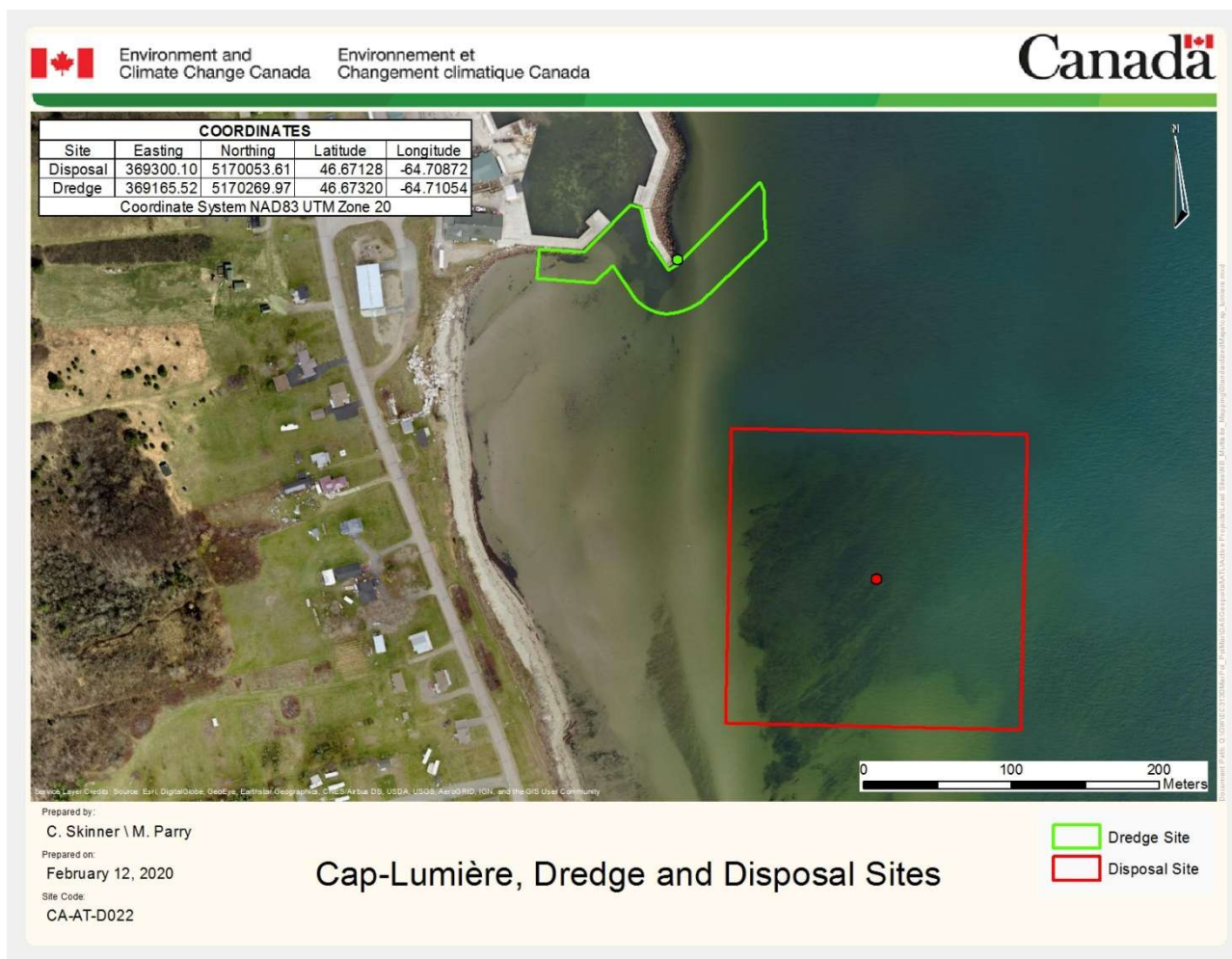
20,000 m³ place measure

ADDITIONAL REQUIREMENTS

- Issue Advance Notification to:
 - ECCC, DFO, and Canadian Coast Guard Marine Communication and Traffic Services
- Record Nighttime Dredging Hours
- Adhere to Mitigation Measures (see Page 2)

EQUIPMENT RESTRICTIONS

Suction Dredge
 Barge-mounted Excavator
 Land-based Heavy Equipment



Mitigation Measures

1. Basic petroleum spill clean-up equipment, e.g., a 250 L oil spill clean-up kit, shall be stored on-site and available for immediate use during execution phase of dredging projects.
2. Disposal activities shall be restricted to the area within the boundaries illustrated and that portion of the seabed lying below the Lower Low Water, Large Tide elevation.
3. Dredge crews, dredging related vehicles or other dredging related equipment shall not access beaches, sand spits, dunes, mud flats, or sand flats during any stage of the project.

DISPOSAL SITE MANAGEMENT SUMMARY

DISPOSAL SITE

Site Name Chockpish
 Site Code CA-AT-D035

RELATED HARBOUR OR CHANNEL

Site Name Chockpish
 Site User DFO-SCH, Tracadie-Sheila

ANNUAL QUANTITY RESTRICTION

30,000 m³ place measure

ADDITIONAL REQUIREMENTS

- Issue Advance Notification to:
 - ECCC, DFO, and Canadian Coast Guard Marine Communication and Traffic Services
- Record Nighttime Dredging Hours
- Adhere to Mitigation Measures (see Page 2)

EQUIPMENT RESTRICTIONS

Suction Dredge
 Barge-mounted Excavator
 Land-based Heavy Equipment



Mitigation Measures

1. Basic petroleum spill clean-up equipment, e.g., a 250 L oil spill clean-up kit, shall be stored on-site and available for immediate use during execution phase of dredging projects.
2. Disposal activities shall be restricted to the area within the boundaries illustrated and that portion of the seabed lying below the Lower Low Water, Large Tide elevation.
3. Dredge crews, dredging related vehicles or other dredging related equipment shall not access beaches, sand spits, dunes, mud flats, or sand flats during any stage of the project.
4. Piping Plover presence or absence shall be confirmed by a qualified observer a maximum of three days prior to initiating dredging activities.

DISPOSAL SITE MANAGEMENT SUMMARY

DISPOSAL SITE

Site Name Loggicroft
 Site Code CA-AT-D081

RELATED HARBOUR OR CHANNEL

Site Name Loggicroft Harbour
 Site User DFO-SCH, Tracadie-Sheila

ANNUAL QUANTITY RESTRICTION

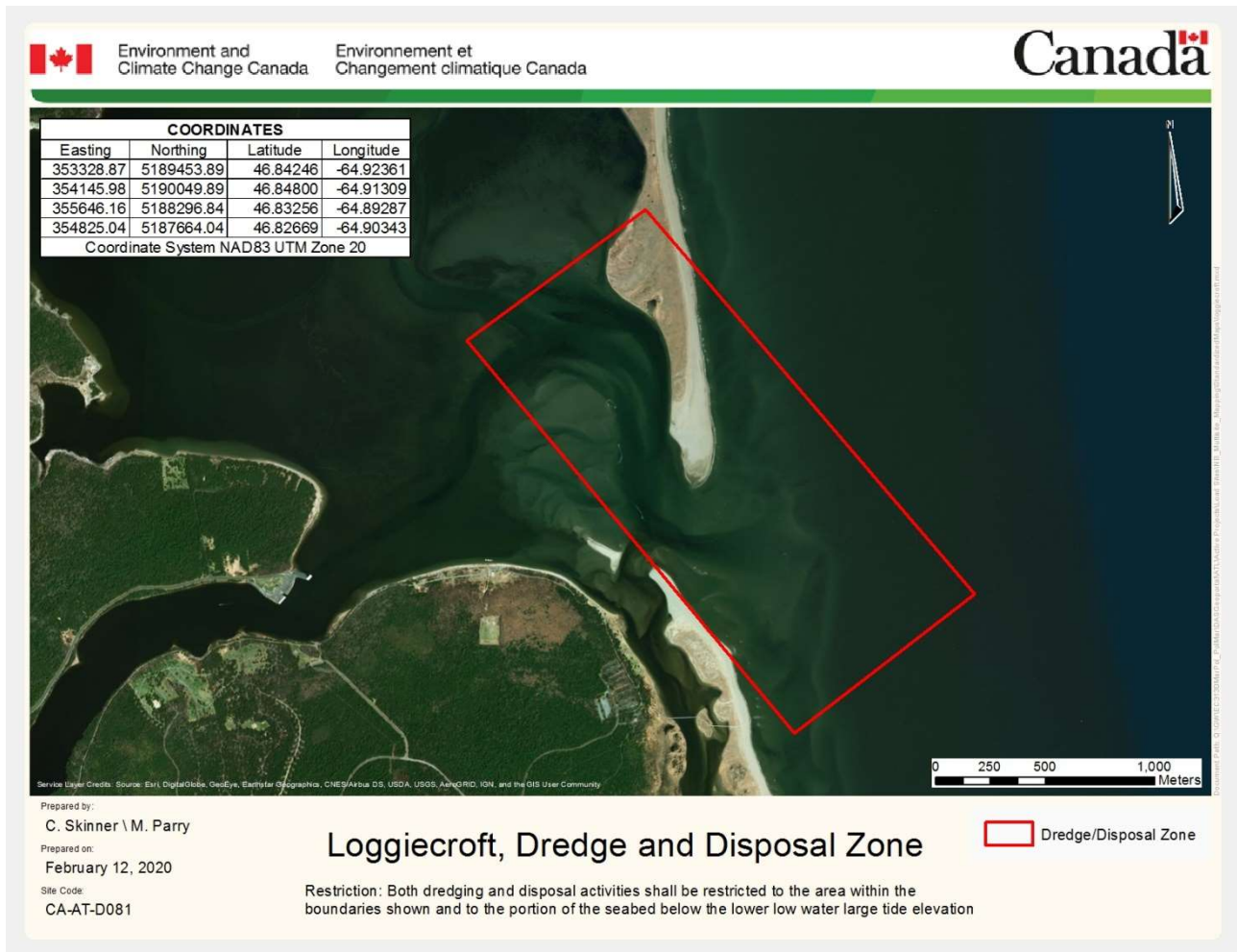
30,000 m³ place measure

EQUIPMENT RESTRICTIONS

Suction Dredge
 Barge-mounted Excavator
 Land-based Heavy Equipment

ADDITIONAL REQUIREMENTS

- Issue Advance Notification to:
 - ECCC, DFO, and Canadian Coast Guard Marine Communication and Traffic Services
 - Parks Canada Agency
- Record Nighttime Dredging Hours
- Adhere to Mitigation Measures (see Page 2)



Mitigation Measures

1. Basic petroleum spill clean-up equipment, e.g., a 250 L oil spill clean-up kit, shall be stored on-site and available for immediate use during execution phase of dredging projects.
2. Dredge crews, dredging related vehicles or other dredging related equipment shall not access beaches, sand spits, dunes, mud flats, or sand flats during any stage of the project.
3. Both dredging and disposal activities shall be restricted to the area within the boundaries illustrated and that portion of the seabed lying below the Lower Low Water, Large Tide elevation.
4. Piping Plover presence or absence shall be confirmed by contacting the Kouchibouguac National Park.

DISPOSAL SITE MANAGEMENT SUMMARY

DISPOSAL SITE

Site Name Pointe-Sapin
 Site Code CA-AT-D115

RELATED HARBOUR OR CHANNEL

Site Name Pointe-Sapin Harbour
 Site User DFO-SCH, Tracadie-Sheila

ANNUAL QUANTITY RESTRICTION

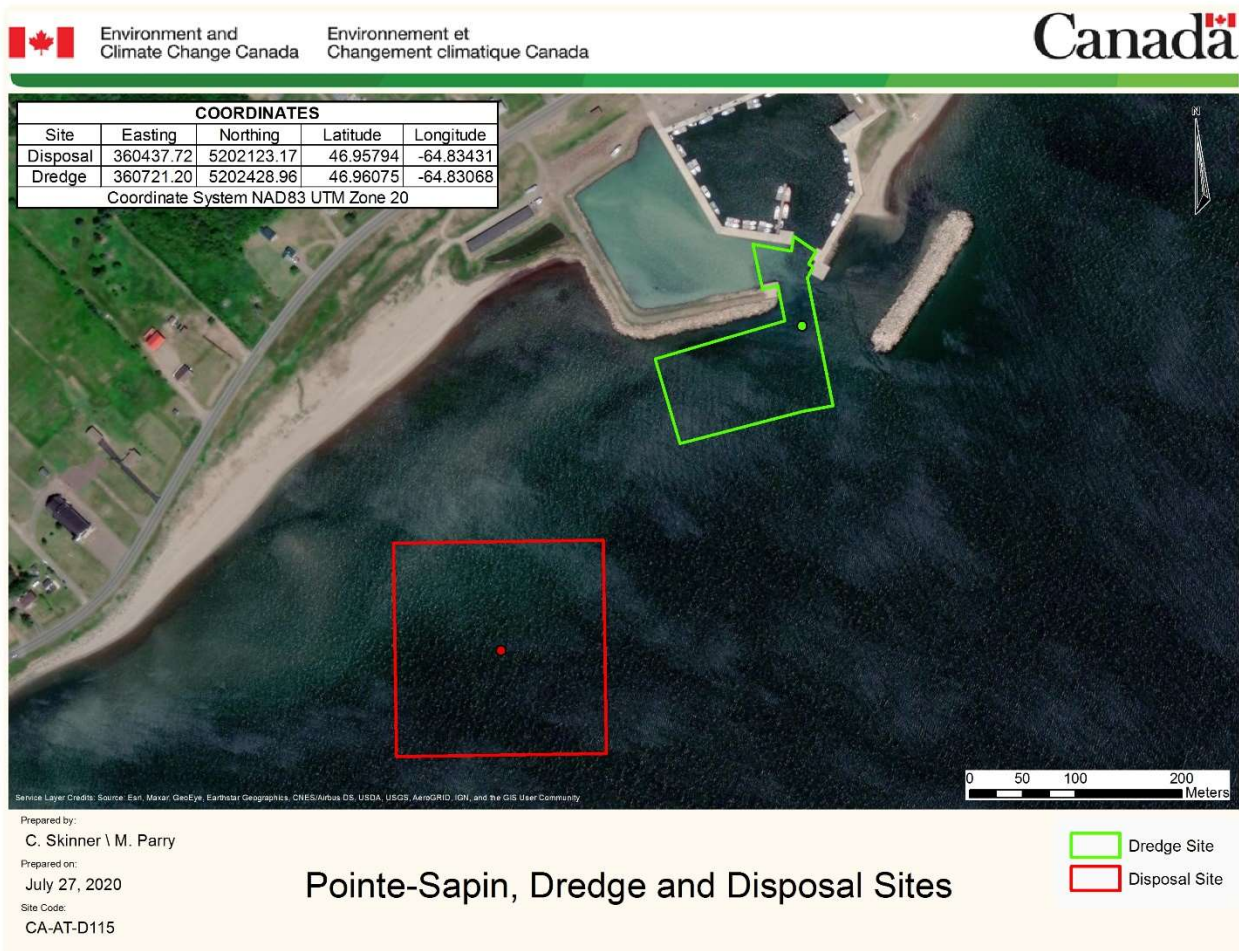
30,000 m³ place measure

ADDITIONAL REQUIREMENTS

- Issue Advance Notification to:
 - ECCC, DFO, and Canadian Coast Guard Marine Communication and Traffic Services
- Record Nighttime Dredging Hours
- Adhere to Mitigation Measures (see Page 2)

EQUIPMENT RESTRICTIONS

Suction Dredge
 Barge-mounted Excavator
 Land-based Heavy Equipment



Mitigation Measures

1. Basic petroleum spill clean-up equipment, e.g., a 250 L oil spill clean-up kit, shall be stored on-site and available for immediate use during execution phase of dredging projects.
2. Disposal activities shall be restricted to the area within the boundaries illustrated and that portion of the seabed lying below the Lower Low Water, Large Tide elevation.
3. Dredge crews, dredging related vehicles or other dredging related equipment shall not access beaches, sand spits, dunes, mud flats, or sand flats during any stage of the project.
4. Piping Plover presence or absence shall be confirmed by a qualified observer a maximum of three days prior to initiating dredging activities.

DISPOSAL SITE MANAGEMENT SUMMARY

DISPOSAL SITE

Site Name Saint-Édouard-de-Kent
 Site Code CA-AT-D140

RELATED HARBOUR OR CHANNEL

Site Name Saint-Édouard-de-Kent Harbour
 Site User DFO-SCH, Tracadie-Sheila

ANNUAL QUANTITY RESTRICTION

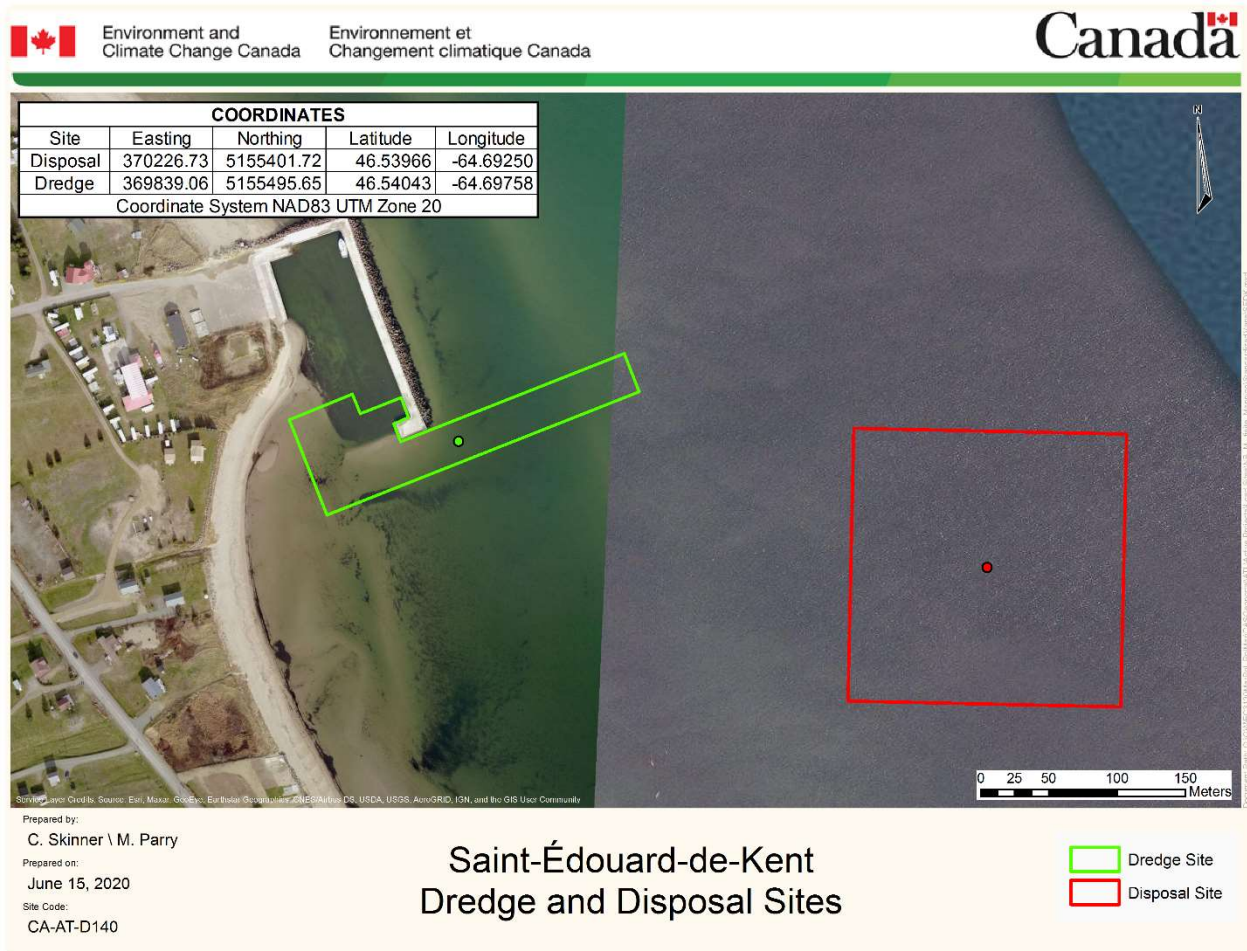
25,000 m³ place measure

ADDITIONAL REQUIREMENTS

- Issue Advance Notification to:
 - ECCC, DFO, and Canadian Coast Guard Marine Communication and Traffic Services
- Record Nighttime Dredging Hours
- Adhere to Mitigation Measures (see Page 2)

EQUIPMENT RESTRICTIONS

- Suction Dredge
- Barge-mounted Excavator
- Land-based Heavy Equipment



Standard Mitigation

1. Basic petroleum spill clean-up equipment, e.g., a 250 L oil spill clean-up kit, shall be stored on-site and available for immediate use during execution phase of dredging projects.
2. Disposal activities shall be restricted to the area within the boundaries illustrated and that portion of the seabed lying below the Lower Low Water, Large Tide elevation.
3. Dredge crews, dredging related vehicles or other dredging related equipment shall not access beaches, sand spits, dunes, mud flats, or sand flats during any stage of the project.

Westmorland County Sites

DISPOSAL SITE MANAGEMENT SUMMARY

DISPOSAL SITE

Site Name Botsford (Murray Corner)
 Site User CA-AT-D019

RELATED HARBOUR OR CHANNEL

Site Name Botsford Harbour
 Site Code DFO-SCH, Tracadie-Sheila

ANNUAL QUANTITY RESTRICTION

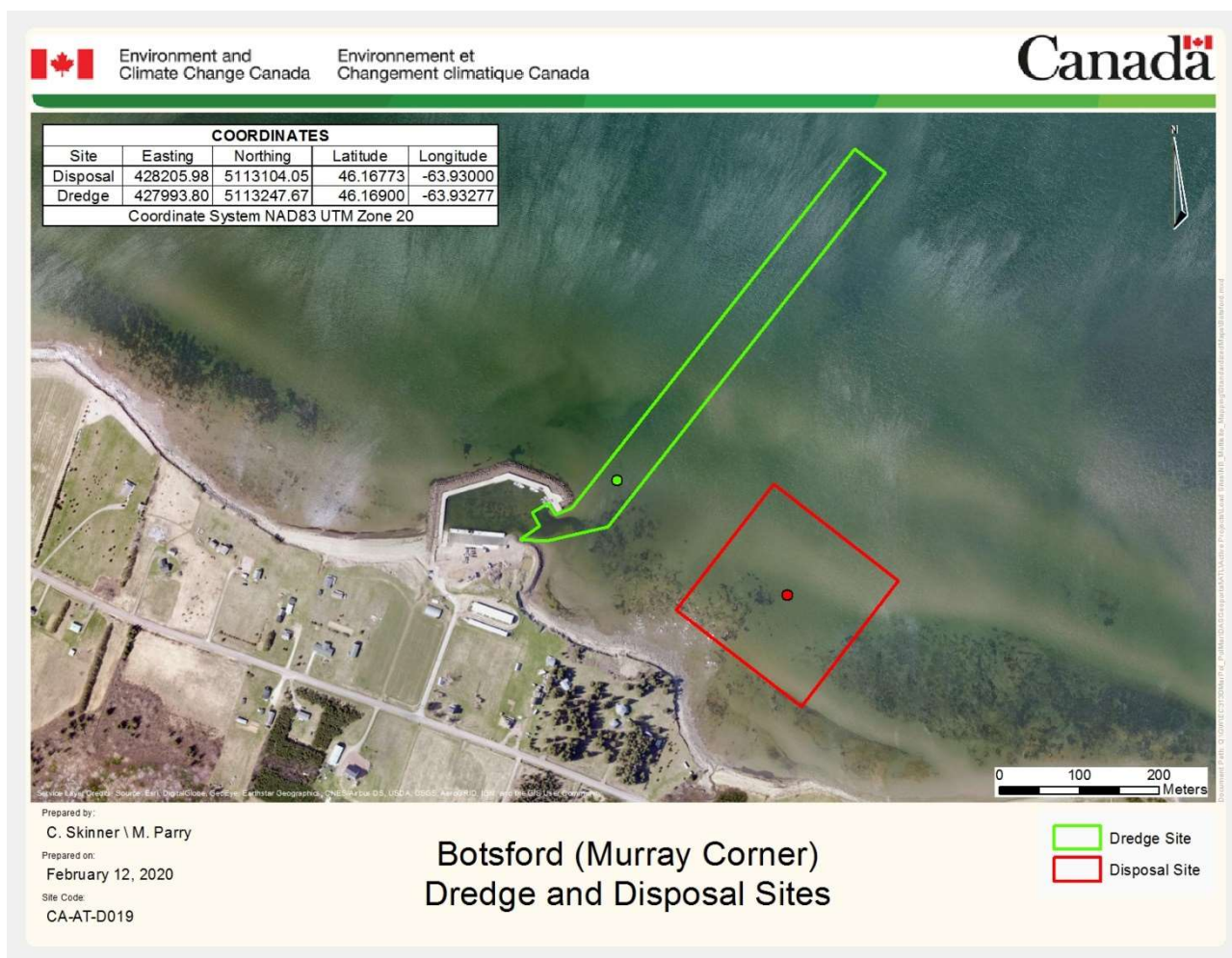
20,000 m³ place measure

ADDITIONAL REQUIREMENTS

- Issue Advance Notification to:
 - ECCC, DFO, and Canadian Coast Guard Marine Communication and Traffic Services
- Record Nighttime Dredging Hours
- Adhere to Mitigation Measures (see Page 2)

EQUIPMENT RESTRICTIONS

Suction Dredge
 Barge-mounted Excavator
 Land-based Heavy Equipment



Standard Mitigation

1. Basic petroleum spill clean-up equipment, e.g., a 250 L oil spill clean-up kit, shall be stored on-site and available for immediate use during execution phase of dredging projects.
2. Disposal activities shall be restricted to the area within the boundaries illustrated and that portion of the seabed lying below the Lower Low Water, Large Tide elevation.
3. Dredge crews, dredging related vehicles or other dredging related equipment shall not access beaches, sand spits, dunes, mud flats, or sand flats during any stage of the project.

DISPOSAL SITE MANAGEMENT SUMMARY

DISPOSAL SITE

Site Name Cap-Pelé
 Site Code CA-AT-D023

RELATED HARBOUR OR CHANNEL

Site Name Cap-Pelé Harbour
 Site User DFO-SCH, Tracadie-Sheila

ANNUAL QUANTITY RESTRICTION

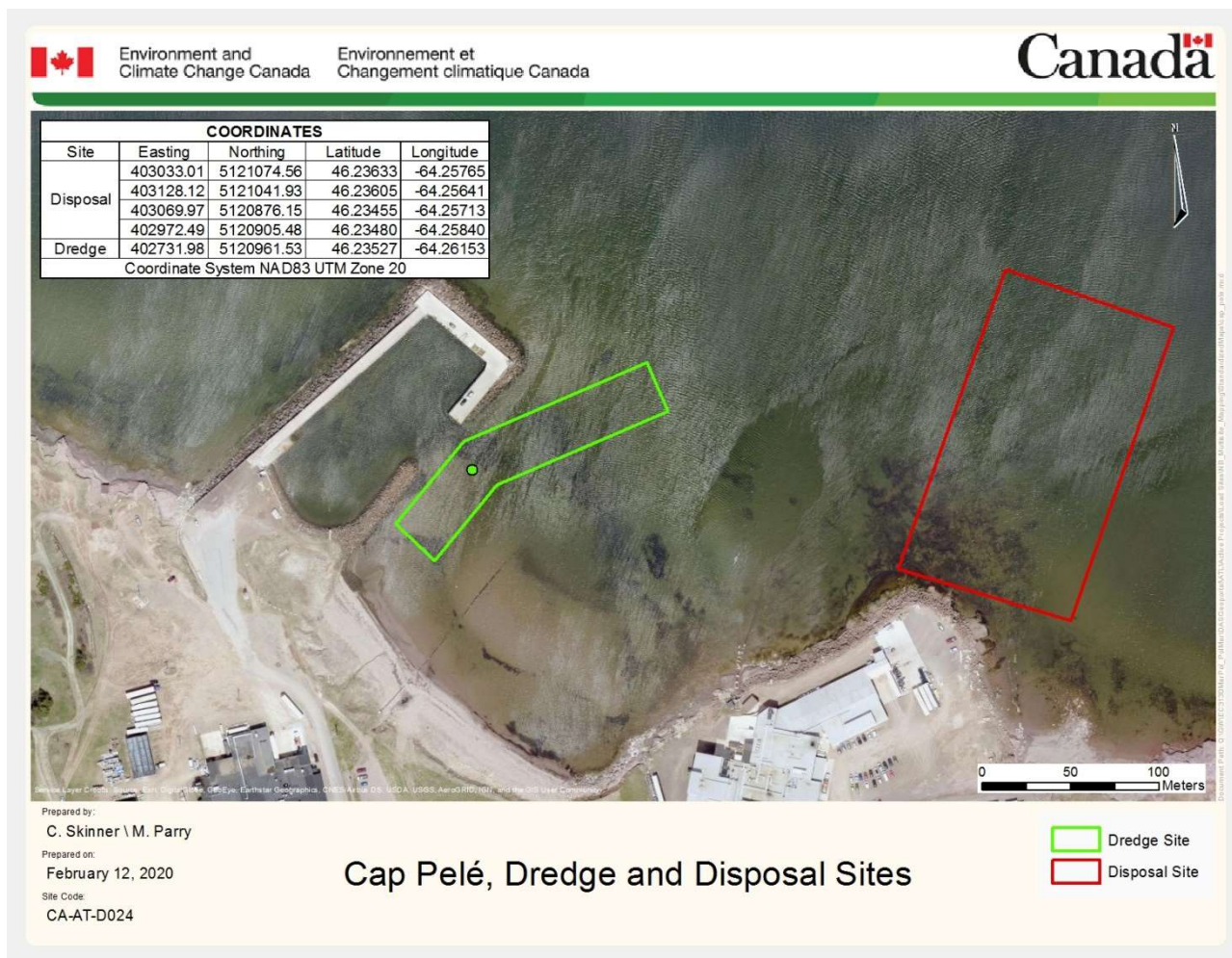
10,000 m³ place measure

EQUIPMENT RESTRICTIONS

Suction Dredge
 Barge-mounted Excavator
 Land-based Heavy Equipment

ADDITIONAL REQUIREMENTS

- Issue Advance Notification to:
 - ECCC, DFO, and Canadian Coast Guard Marine Communication and Traffic Services
- Record Nighttime Dredging Hours
- Adhere to Mitigation Measures (see Page 2)



Mitigation Measures

1. Basic petroleum spill clean-up equipment, e.g., a 250 L oil spill clean-up kit, shall be stored on-site and available for immediate use during execution phase of dredging projects.
2. Disposal activities shall be restricted to the area within the boundaries illustrated and that portion of the seabed lying below the Lower Low Water, Large Tide elevation.
3. Dredge crews, dredging related vehicles or other dredging related equipment shall not access beaches, sand spits, dunes, mud flats, or sand flats during any stage of the project.

DISPOSAL SITE MANAGEMENT SUMMARY

DISPOSAL SITE

Site Name Les Aboiteaux
 Site Code CA-AT-D075Z1 & D076

RELATED HARBOUR OR CHANNEL

Site Name Les Aboiteaux Harbour
 Site User DFO-SCH, Tracadie-Sheila

ANNUAL QUANTITY RESTRICTION

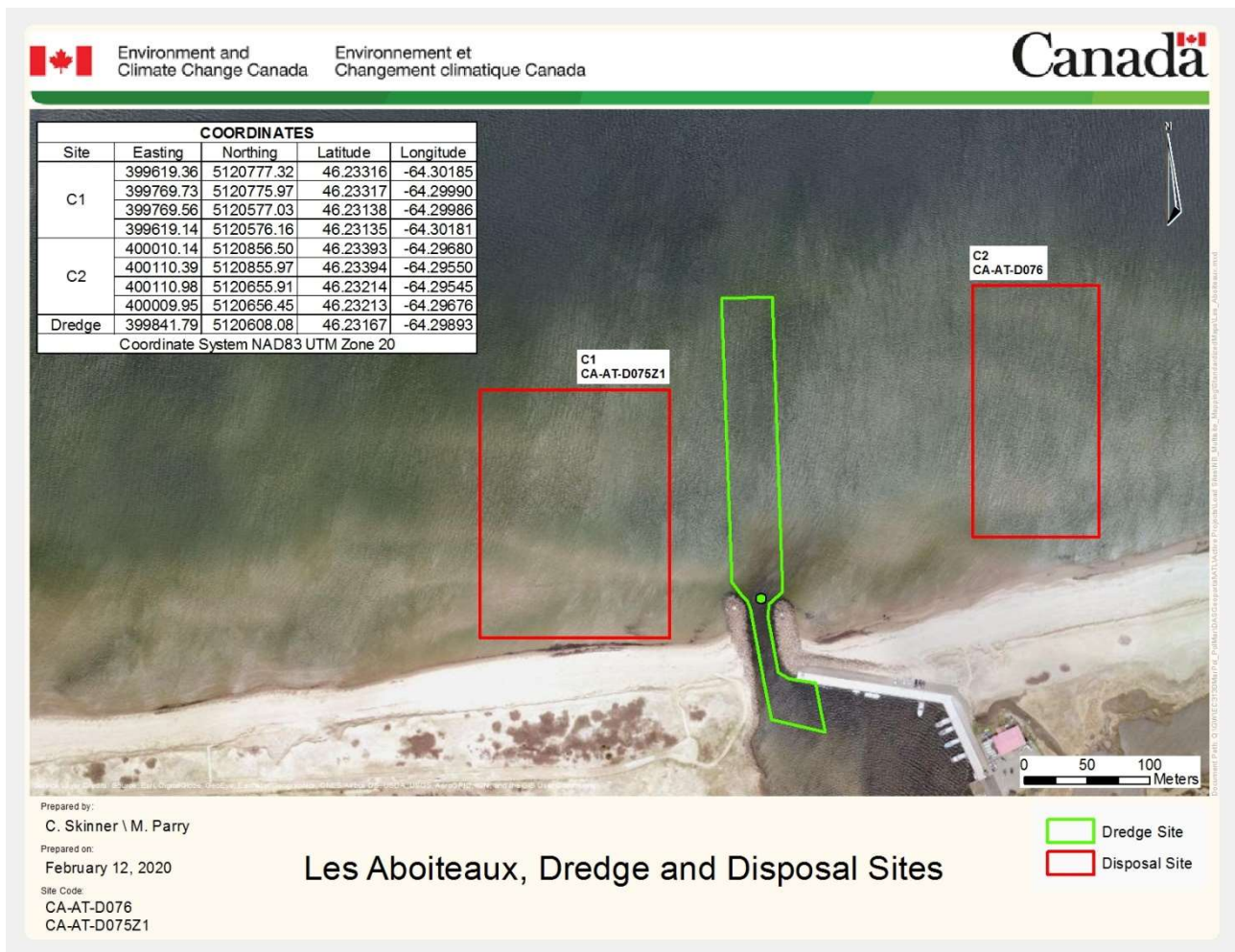
30,000 m³ place measure

ADDITIONAL REQUIREMENTS

- Issue Advance Notification to:
 - ECCC, DFO, and Canadian Coast Guard Marine Communication and Traffic Services
- Record Nighttime Dredging Hours
- Adhere to Mitigation Measures (see Page 2)

EQUIPMENT RESTRICTIONS

Suction Dredge
 Barge-mounted Excavator
 Land-based Heavy Equipment



Mitigation Measure

1. Basic petroleum spill clean-up equipment, e.g., a 250 L oil spill clean-up kit, shall be stored on-site and available for immediate use during execution phase of dredging projects.
2. Disposal activities shall be restricted to the area within the boundaries illustrated and that portion of the seabed lying below the Lower Low Water, Large Tide elevation.
3. Dredge crews, dredging related vehicles or other dredging related equipment shall not access beaches, sand spits, dunes, mud flats, or sand flats during any stage of the project.

DISPOSAL SITE MANAGEMENT SUMMARY

DISPOSAL SITE

Site Name Petit-Cap
 Site Code CA-AT-D107

RELATED HARBOUR OR CHANNEL

Site Name Petit-Cap Harbour
 Site User DFO-SCH, Tracadie-Sheila

ANNUAL QUANTITY RESTRICTION

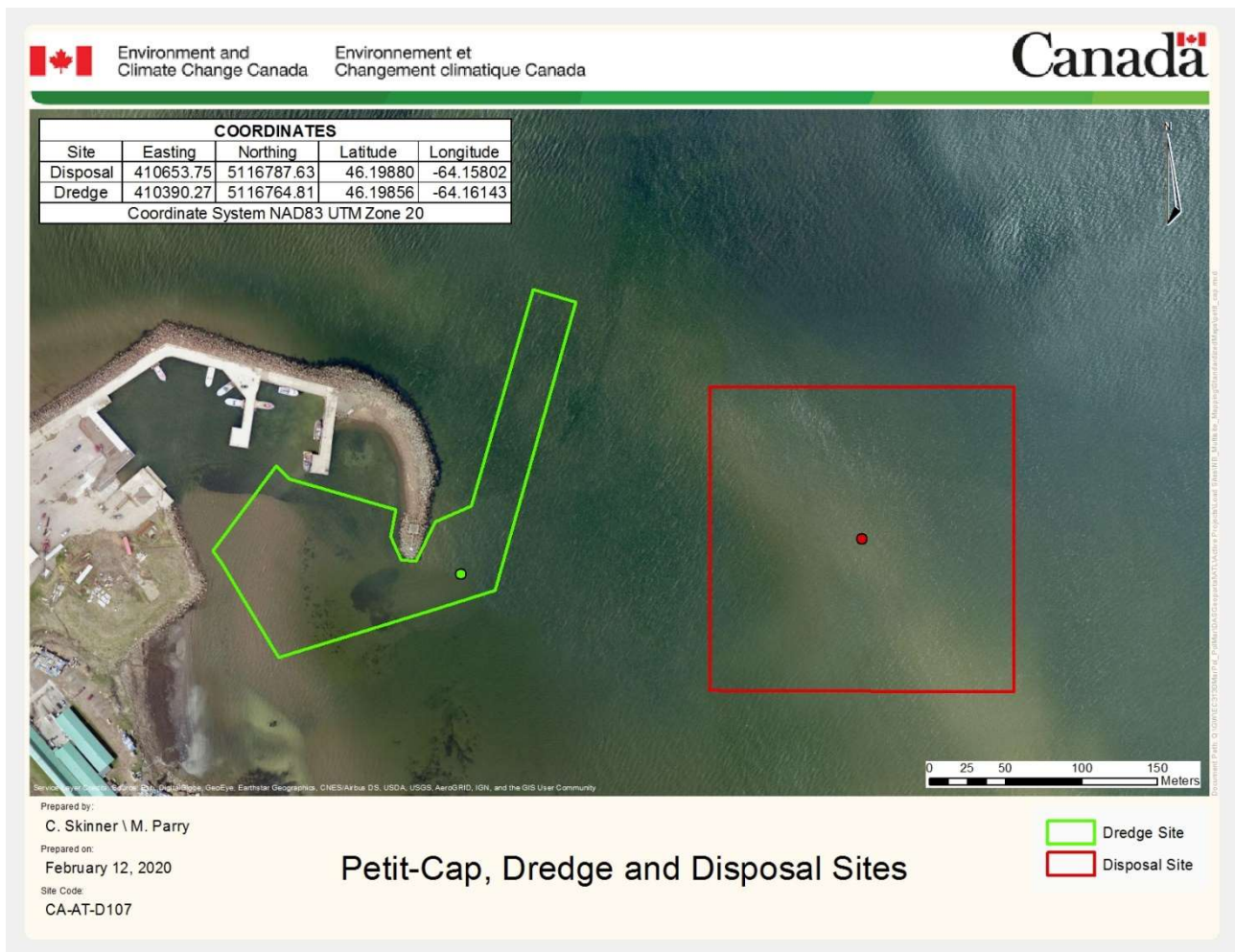
30,000 m³ place measure

ADDITIONAL REQUIREMENTS

- Issue Advance Notification to:
 - ECCC, DFO, and Canadian Coast Guard Marine Communication and Traffic Services
- Record Nighttime Dredging Hours
- Adhere to Mitigation Measures (see Page 2)

EQUIPMENT RESTRICTIONS

Suction Dredge
 Barge-mounted Excavator
 Land-based Heavy Equipment



Mitigation Measures

1. Basic petroleum spill clean-up equipment, e.g., a 250 L oil spill clean-up kit, shall be stored on-site and available for immediate use during execution phase of dredging projects.
2. Disposal activities shall be restricted to the area within the boundaries illustrated and that portion of the seabed lying below the Lower Low Water, Large Tide elevation.
3. Dredge crews, dredging related vehicles or other dredging related equipment shall not access beaches, sand spits, dunes, mud flats, or sand flats during any stage of the project.