

**1**  
G01 PARTIAL PARTITION PLAN - REMOVALS  
SCALE = 1:100

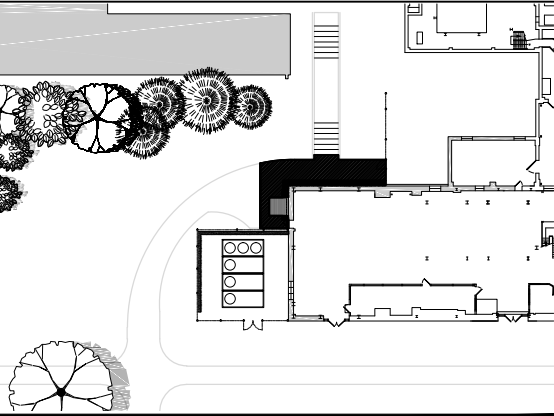
**GENERAL NOTES**

- CONTRACTORS TO CHECK AND VERIFY ALL DIMENSIONS ON SITE PRIOR TO DEMOLITION OR CONSTRUCTION AND REPORT ANY ERRORS OR OMISSIONS TO DEPARTMENTAL REPRESENTATIVE.
- CONTRACTORS MUST VISIT THE SITE & FULLY FAMILIARIZE THEMSELVES WITH THE SCOPE OF THE WORK.
- PREVENT THE SPREAD OF DUST & DEBRIS BEYOND THE WORK AREA AND CLEAN ALL SURFACES AT COMPLETION.
- MAKE GOOD ALL SURFACES AFFECTED BY THIS WORK.
- COORDINATE ALL SHUTDOWNS WITH THE DEPARTMENTAL REPRESENTATIVE.
- PROVIDE ALL LABOUR AND MATERIAL REQUIRED TO FORM A COMPLETE, FUNCTIONAL SYSTEM AS DESCRIBED ON DRAWINGS.
- SEAL ALL OPENINGS WHERE CABLES, CONDUITS OR PIPES PASS THROUGH WALLS WITH AN ACOUSTIC SEALANT CONFORMING TO CAN/CGSB-19.21-M87.
- WHERE CABLES, CONDUITS AND PIPES PASS THROUGH FIRE RATED WALLS AND FLOORS, PACK SPACE BETWEEN WITH COMPRESSED GLASS FIBRES AND SEAL WITH FIRE STOP CAULKING IN ACCORDANCE WITH CAN/CGSB-19.13-M87 AND NBC 3.1.7.
- ALL DISTURBED AREAS SHALL BE REINSTATED TO EQUAL OR BETTER CONDITION TO THE APPROVAL OF NRC DEPARTMENTAL REPRESENTATIVE. AREAS TO BE DRESSED WITH NEW TOPSOIL AND SOD AND MAINTAINED UNTIL ESTABLISHED. CONTRACTOR SHALL BE RESPONSIBLE FOR FIRST GRASS CUTTING.
- THE CONTRACTOR IS RESPONSIBLE FOR ALL LOCATES INCLUDING PUBLIC AND PRIVATE SERVICES, HIGH PRESSURE GAS AND WATER MAINS, ETC. SERVICES INDICATED ON DRAWINGS ARE FOR REFERENCE ONLY.

**DRAWING NOTES - SHEET G01**  
THESE NOTES APPLY TO DRAWING SHEET G01 ONLY

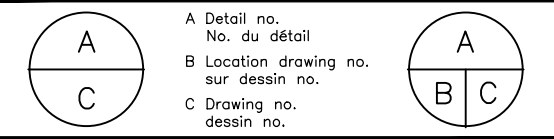
1. WHERE REQUIRED, REMOVE EXISTING LANDSCAPE INCLUDING SHRUBS/TREES. REINSTATE WITH SAME SPECIES AND SIZE TO MATCH EXISTING OR TO MATCH REMOVED.
2. REMOVE EXISTING ASPHALT SIDEWALK SECTION AS INDICATED. EXCAVATE DOWN TO A DEPTH OF APPROX. 800mm TO ALLOW FOR NEW GRADING AND ASPHALT. ALL EXCAVATIONS ARE TO BE BY HAND OR HYDRO VAC.
3. ADJACENT TO BUILDING FOUNDATION, EXCAVATE TO A DEPTH OF APPROX. 1500mm TO EXPOSE FOUNDATION WALL AND EXISTING ELEMENTS. ALL EXCAVATIONS ARE TO BE BY HAND OR HYDRO VAC.
4. REMOVE EXISTING RIVER ROCK AND RETAIN FOR RE-USE.
5. EXISTING FAN HOOD TO REMAIN UNAFFECTED BY THE WORK.
6. EXISTING RETAINING WALL TO REMAIN UNAFFECTED BY THE WORK.
7. EXISTING CONCRETE STAIRS AND ALL ASSOCIATED ELEMENTS TO REMAIN UNAFFECTED BY THE WORK.
8. WHERE EXISTING ASPHALT IS TO BE REMOVED, SAWCUT ALONG EXTENT OF REMOVAL TO ENSURE CLEAN TRANSITION FOR NEW ASPHALT APPLICATION.
9. STORE EXCAVATED BACKFILL LESS STONES EXCEEDING 100mm FOR RE-USE WITH NEW BACKFILL.

**KEY PLAN / PLAN CLÉ**

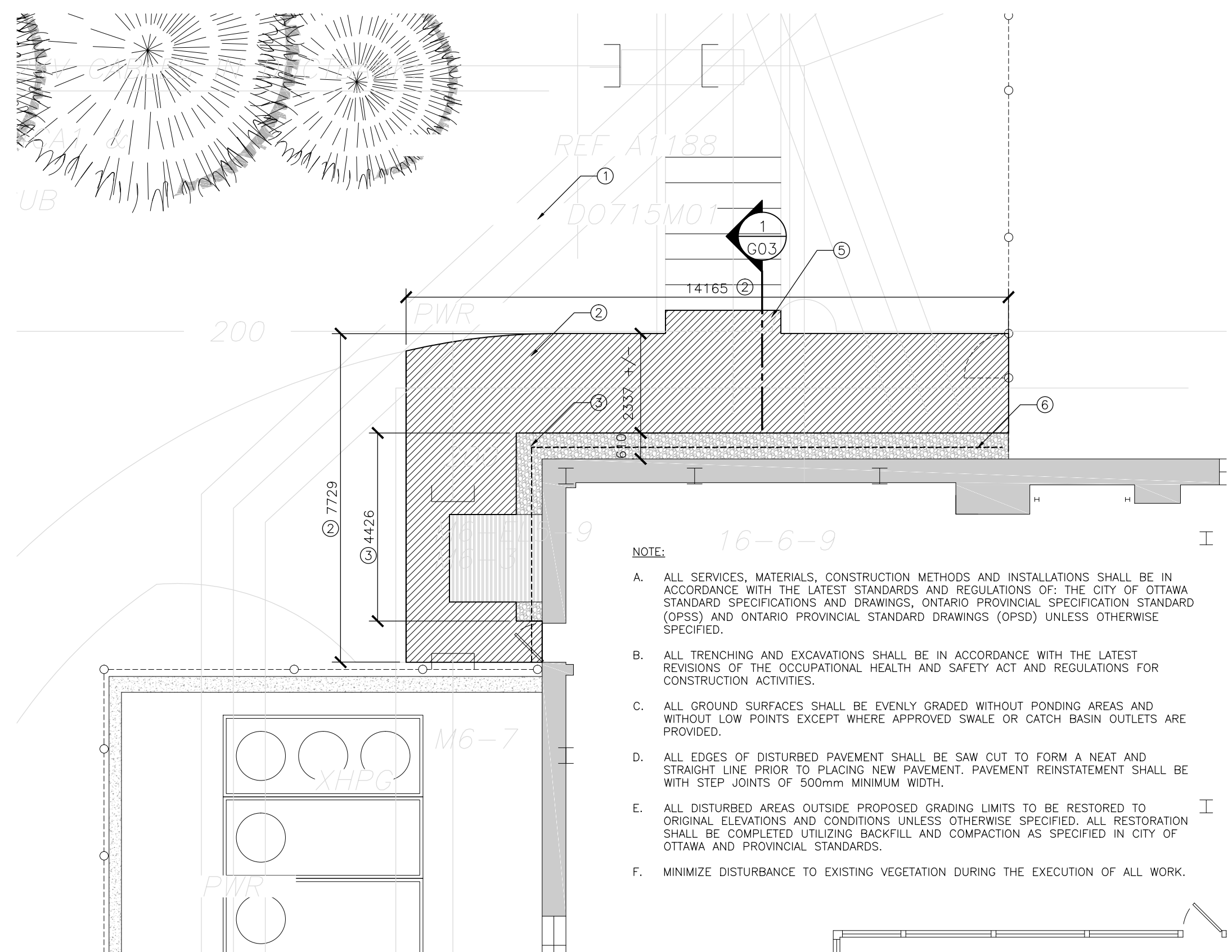


No.	Date	Revision	By:
0	DD MM YYYY	XXXX	???
Date Printed DD MM YYYY			Date imprimée

- Verify all dimensions and site conditions and be responsible for same
- Vérifier toutes les dimensions et l'état des lieux et en assumer la responsabilité



project		M-6 FOUNDATION WATERPROOFING	
drawing		PARTIAL PLAN - REMOVALS	
designed	conçu	date	01/2021
drawn	dessiné	scale	AS NOTED
checked	vérifié	sheet	1 of/de 3
approved	approuvé	W.O.no.	D.T.no.
dwg.no.		dessin no.	
5870-G01			



1 PARTIAL PARTITION PLAN - NEW WORK  
 G02 SCALE = 1:100

- NOTE: 16-6-9
- ALL SERVICES, MATERIALS, CONSTRUCTION METHODS AND INSTALLATIONS SHALL BE IN ACCORDANCE WITH THE LATEST STANDARDS AND REGULATIONS OF: THE CITY OF OTTAWA STANDARD SPECIFICATIONS AND DRAWINGS, ONTARIO PROVINCIAL SPECIFICATION STANDARD (OPSS) AND ONTARIO PROVINCIAL STANDARD DRAWINGS (OPSD) UNLESS OTHERWISE SPECIFIED.
  - ALL TRENCHING AND EXCAVATIONS SHALL BE IN ACCORDANCE WITH THE LATEST REVISIONS OF THE OCCUPATIONAL HEALTH AND SAFETY ACT AND REGULATIONS FOR CONSTRUCTION ACTIVITIES.
  - ALL GROUND SURFACES SHALL BE EVENLY GRADED WITHOUT PONDING AREAS AND WITHOUT LOW POINTS EXCEPT WHERE APPROVED SWALE OR CATCH BASIN OUTLETS ARE PROVIDED.
  - ALL EDGES OF DISTURBED PAVEMENT SHALL BE SAW CUT TO FORM A NEAT AND STRAIGHT LINE PRIOR TO PLACING NEW PAVEMENT. PAVEMENT REINSTATEMENT SHALL BE WITH STEP JOINTS OF 500mm MINIMUM WIDTH.
  - ALL DISTURBED AREAS OUTSIDE PROPOSED GRADING LIMITS TO BE RESTORED TO ORIGINAL ELEVATIONS AND CONDITIONS UNLESS OTHERWISE SPECIFIED. ALL RESTORATION SHALL BE COMPLETED UTILIZING BACKFILL AND COMPACTION AS SPECIFIED IN CITY OF OTTAWA AND PROVINCIAL STANDARDS.
  - MINIMIZE DISTURBANCE TO EXISTING VEGETATION DURING THE EXECUTION OF ALL WORK.

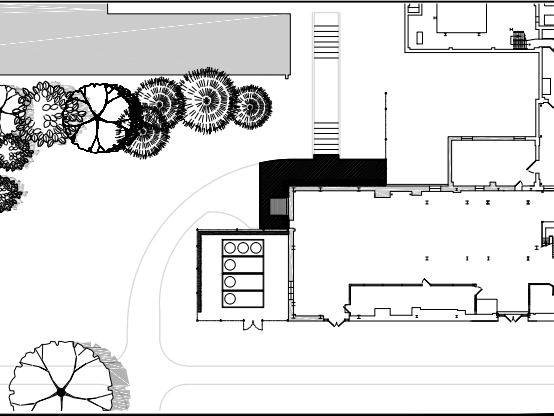
**GENERAL NOTES**

- CONTRACTORS TO CHECK AND VERIFY ALL DIMENSIONS ON SITE PRIOR TO DEMOLITION OR CONSTRUCTION AND REPORT ANY ERRORS OR OMISSIONS TO DEPARTMENTAL REPRESENTATIVE.
- CONTRACTORS MUST VISIT THE SITE & FULLY FAMILIARIZE THEMSELVES WITH THE SCOPE OF THE WORK.
- PREVENT THE SPREAD OF DUST & DEBRIS BEYOND THE WORK AREA AND CLEAN ALL SURFACES AT COMPLETION.
- MAKE GOOD ALL SURFACES AFFECTED BY THIS WORK.
- COORDINATE ALL SHUTDOWNS WITH THE DEPARTMENTAL REPRESENTATIVE.
- PROVIDE ALL LABOUR AND MATERIAL REQUIRED TO FORM A COMPLETE, FUNCTIONAL SYSTEM AS DESCRIBED ON DRAWINGS.
- SEAL ALL OPENINGS WHERE CABLES, CONDUITS OR PIPES PASS THROUGH WALLS WITH AN ACOUSTIC SEALANT CONFORMING TO CAN/CGSB-19.21-M87.
- WHERE CABLES, CONDUITS AND PIPES PASS THROUGH FIRE RATED WALLS AND FLOORS, PACK SPACE BETWEEN WITH COMPRESSED GLASS FIBRES AND SEAL WITH FIRE STOP CAULKING IN ACCORDANCE WITH CAN/CGSB-19.13-M87 AND NBC 3.1.7.
- ALL DISTURBED AREAS SHALL BE REINSTATED TO EQUAL OR BETTER CONDITION TO THE APPROVAL OF NRC DEPARTMENTAL REPRESENTATIVE. AREAS TO BE DRESSED WITH NEW TOPSOIL AND SOD AND MAINTAINED UNTIL ESTABLISHED. CONTRACTOR SHALL BE RESPONSIBLE FOR FIRST GRASS CUTTING.
- THE CONTRACTOR IS RESPONSIBLE FOR ALL LOCATES INCLUDING PUBLIC AND PRIVATE SERVICES, HIGH PRESSURE GAS AND WATER MAINS, ETC. SERVICES INDICATED ON DRAWINGS ARE FOR REFERENCE ONLY.

**DRAWING NOTES - SHEET G02**  
 THESE NOTES APPLY TO DRAWING SHEET G02 ONLY

- WHERE REQUIRED, REMOVE EXISTING LANDSCAPE INCLUDING SHRUBS/TREES. REINSTATE WITH SAME SPECIES AND SIZE TO MATCH EXISTING OR TO MATCH REMOVED.
- NEW ASPHALT SIDEWALK. REFER TO DETAIL 2/G03. GRADE 2% SLOPE FROM BUILDING, TYP.
- NEW AND RE-USED CRUSHED STONE AND RIVER ROCK FROM EXCAVATION. FINAL LEVEL OF NEW AND RE-USED TO MATCH PER DETAIL 1/G03.
- NEW AND RE-USED EXCAVATED BACKFILL LESS STONES EXCEEDING 100mm.
- NEW 35MPa CAST IN PLACE CONCRETE STEP TO ACCOMMODATE LEVEL CHANGE FROM EXISTING STEPS TO NEW ASPHALT. REFER TO DETAIL 1/G03.
- NEW 152MM FRENCH DRAIN c/w CLEAN FILL. REFER TO MECHANICAL DRAWINGS FOR CONNECTION INFORMATION.

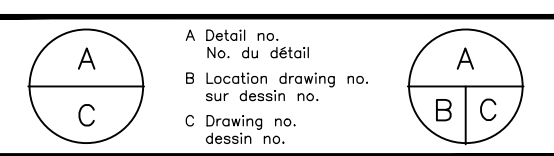
**KEY PLAN PLAN CLÉ**



No.	Date	Revision	By:
0	DD MM YYYY	XXXX	???

Date Printed DD MM YYYY Date imprimée

- Verify all dimensions and site conditions and be responsible for same
- Vérifier toutes les dimensions et l'état des lieux et en assumer la responsabilité



project M-6 FOUNDATION WATERPROOFING projet

MONTREAL ROAD CAMPUS

drawing PARTIAL PLAN - NEW WORK dessin

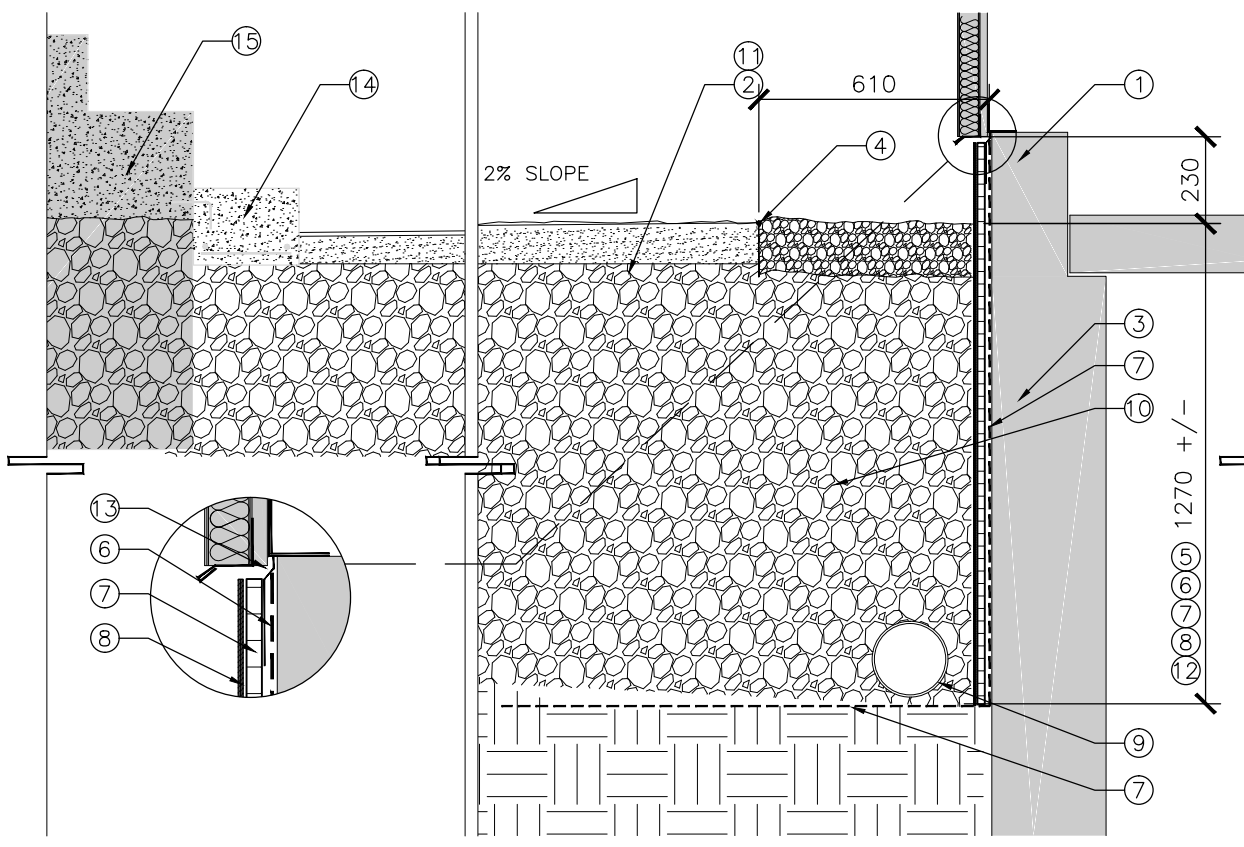
designed CE conçu date 01/2021 date

drawn CE dessiné scale AS NOTED échelle

checked JL vérifié sheet 2 of/de 3 feuille

approved AS approuvé W.O.no. D.T.no.

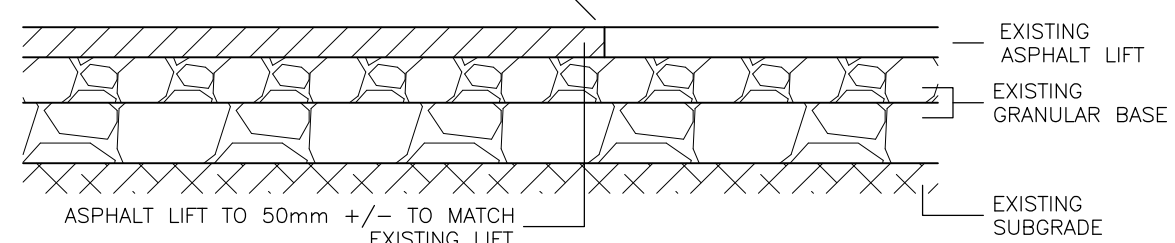
dwg.no. 5870-G02 dessin no.



**1**  
**G03** SECTION @ DAMPROOFING & NEW STEP  
 SCALE = 1:20

- DRAWING NOTES – SHEET G03**  
**THESE NOTES APPLY TO DRAWING SHEET G03 ONLY**
- EXISTING FOUNDATION WALL.
  - REMOVE EXISTING ASPHALT SIDEWALK SECTION AS INDICATED. EXCAVATE DOWN TO A DEPTH OF APPROX. 600mm TO ALLOW FOR NEW GRADING AND ASPHALT.
  - ADJACENT TO BUILDING FOUNDATION, EXCAVATE TO A DEPTH OF APPROX. 1500mm TO EXPOSE FOUNDATION WALL AND EXISTING ELEMENTS.
  - NEW CONTINUOUS PVC DIVIDER.
  - CAULK ALL CRACKS AND JOINTS IN CONCRETE WITH CWS TYPE SEALANT. WHERE JOINTS OR CRACKS EXCEED MANUFACTURER'S WRITTEN RECOMMENDED DEPTH OR WIDTH, INSTALL NEW FOAM BACKER ROD PRIOR TO APPLICATION OF SEALANT.
  - NEW ROLLED SELF ADHERING WATERPROOFING MEMBRANE. ACCEPTED MATERIAL: MEL-ROL BY WR MEADOWS. MEMBRANE TO EXTEND A MIN. OF 300mm PAST VERTICAL JOINT ON EITHER SIDE.
  - NEW MECHANICALLY FASTENED PLATON TYPE DRAINAGE SYSTEM APPLIED VERTICALLY ALONG FACE OF EXPOSED FOUNDATION AND APPROX 1m HORIZONTALLY FROM BUILDING FOUNDATION. ACCEPTED MATERIAL: ARMTEC PLATON MEMBRANE.
  - 6mm ASPHALT FIBREBOARD. NO MECHANICAL FASTENERS WILL BE PERMITTED. APPLY NEW PARGING (BLACK) OVER EXPOSED SURFACE OF BOARD.
  - NEW 152mm FRENCH DRAIN c/w CLEAN CRUSHED STONE. REFER TO MECHANICAL DRAWINGS FOR CONNECTION.
  - NEW AND RE-USED COMPACTED BACKFILL.
  - RE-USED EXISTING CRUSHED STONE AND BACKFILL FROM EXCAVATION. ADD NEW AS REQUIRED TO ACHIEVE MIN. DEPTH OF 152MM.
  - EXISTING MEMBRANE TO BE RESEALED TO FOUNDATION WALL:  
 -CUT BACK EXISTING MEMBRANE WHERE LOOSE FROM SUBSTRATE.  
 -APPLY NEW COAT OF PRIMER PER MANUFACTURER'S WRITTEN INSTRUCTIONS.  
 -APPLY NEW MIN. 300mm TOP STRIP OF MEMBRANE; ENSURE OVERLAP AT BOTH VERTICAL AND HORIZONTAL. FOLLOW MANUFACTURER'S INSTALLATION INSTRUCTIONS.
  - NEW CONTINUOUS CAP MOLDING.
  - NEW 35 MPA + 8% ENTRAINED AIR CONCRETE STEP, DIMENSIONS TO SUIT EXISTING STEPS AND LEVEL; CHANGE DUE TO NEW GRADING OF ASPHALT. STEP TO BE c/w 10M REBAR TO SUIT APPLICATION. NEW CONCRETE TO BE 15M L DOWELLED c/w EPOXY TO EXISTING STEPS.
  - EXISTING STEP SECTION.

TREAT ALL SAW CUT FACES WITH TACK COAT PRIOR TO PLACING ASPHALT



PAVEMENT STRUCTURE			
CONSTRUCTION	PAVEMENT LAYER	COMPACTION REQUIREMENTS	PAVEMENT TYPE (LIGHT DUTY)
SURFACE FINISH	ASPHALTIC CONCRETE	TABLE 9 OF OPSS 310	50mm SP 12.5 (PG58-34) TRAFFIC LEVEL B
GRANULAR BASE	OPSS GRANULAR 'A'	98% SPMD	150mm
	OPSS GRANULAR 'B' TYPE II	98% SPMD	300mm

**2**  
**G03** EXISTING PAVEMENT TIE-IN DETAIL  
 SCALE = N.T.S.

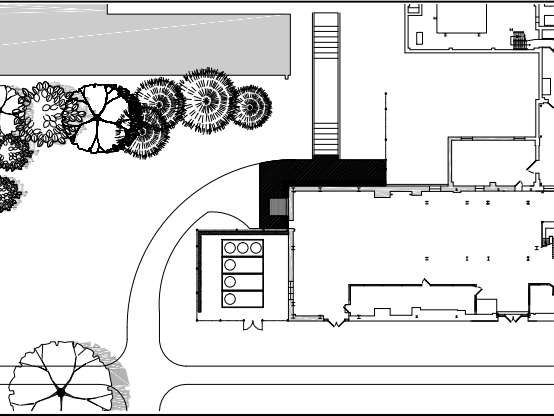
**GENERAL NOTES**

- CONTRACTORS TO CHECK AND VERIFY ALL DIMENSIONS ON SITE PRIOR TO DEMOLITION OR CONSTRUCTION AND REPORT ANY ERRORS OR OMISSIONS TO DEPARTMENTAL REPRESENTATIVE.
- CONTRACTORS MUST VISIT THE SITE & FULLY FAMILIARIZE THEMSELVES WITH THE SCOPE OF THE WORK.
- PREVENT THE SPREAD OF DUST & DEBRIS BEYOND THE WORK AREA AND CLEAN ALL SURFACES AT COMPLETION.
- MAKE GOOD ALL SURFACES AFFECTED BY THIS WORK.
- COORDINATE ALL SHUTDOWNS WITH THE DEPARTMENTAL REPRESENTATIVE.
- PROVIDE ALL LABOUR AND MATERIAL REQUIRED TO FORM A COMPLETE, FUNCTIONAL SYSTEM AS DESCRIBED ON DRAWINGS.
- SEAL ALL OPENINGS WHERE CABLES, CONDUITS OR PIPES PASS THROUGH WALLS WITH AN ACOUSTIC SEALANT CONFORMING TO CAN/CGSB-19.21-M87.
- WHERE CABLES, CONDUITS AND PIPES PASS THROUGH FIRE RATED WALLS AND FLOORS, PACK SPACE BETWEEN WITH COMPRESSED GLASS FIBRES AND SEAL WITH FIRE STOP CAULKING IN ACCORDANCE WITH CAN/CGSB-19.13-M87 AND NBC 3.1.7.
- ALL DISTURBED AREAS SHALL BE REINSTATED TO EQUAL OR BETTER CONDITION TO THE APPROVAL OF NRC DEPARTMENTAL REPRESENTATIVE. AREAS TO BE DRESSED WITH NEW TOPSOIL AND SOD AND MAINTAINED UNTIL ESTABLISHED. CONTRACTOR SHALL BE RESPONSIBLE FOR FIRST GRASS CUTTING.
- THE CONTRACTOR IS RESPONSIBLE FOR ALL LOCATES INCLUDING PUBLIC AND PRIVATE SERVICES, HIGH PRESSURE GAS AND WATER MAINS, ETC. SERVICES INDICATED ON DRAWINGS ARE FOR REFERENCE ONLY.

**NOTE:**

- ALL SERVICES, MATERIALS, CONSTRUCTION METHODS AND INSTALLATIONS SHALL BE IN ACCORDANCE WITH THE LATEST STANDARDS AND REGULATIONS OF: THE CITY OF OTTAWA STANDARD SPECIFICATIONS AND DRAWINGS, ONTARIO PROVINCIAL SPECIFICATION STANDARD (OPSS) AND ONTARIO PROVINCIAL STANDARD DRAWINGS (OPSD) UNLESS OTHERWISE SPECIFIED.
- ALL TRENCHING AND EXCAVATIONS SHALL BE IN ACCORDANCE WITH THE LATEST REVISIONS OF THE OCCUPATIONAL HEALTH AND SAFETY ACT AND REGULATIONS FOR CONSTRUCTION ACTIVITIES.
- ALL GROUND SURFACES SHALL BE EVENLY GRADED WITHOUT PONDING AREAS AND WITHOUT LOW POINTS EXCEPT WHERE APPROVED SWALE OR CATCH BASIN OUTLETS ARE PROVIDED.
- ALL EDGES OF DISTURBED PAVEMENT SHALL BE SAW CUT TO FORM A NEAT AND STRAIGHT LINE PRIOR TO PLACING NEW PAVEMENT. PAVEMENT REINSTATEMENT SHALL BE WITH STEP JOINTS OF 500mm MINIMUM WIDTH.
- ALL DISTURBED AREAS OUTSIDE PROPOSED GRADING LIMITS TO BE RESTORED TO ORIGINAL ELEVATIONS AND CONDITIONS UNLESS OTHERWISE SPECIFIED. ALL RESTORATION SHALL BE COMPLETED UTILIZING BACKFILL AND COMPACTION AS SPECIFIED IN CITY OF OTTAWA AND PROVINCIAL STANDARDS.
- MINIMIZE DISTURBANCE TO EXISTING VEGETATION DURING THE EXECUTION OF ALL WORK.

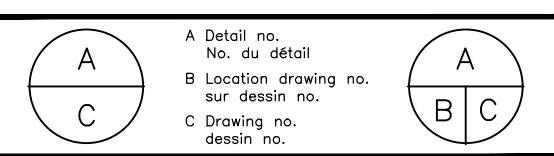
**KEY PLAN PLAN CLÉ**



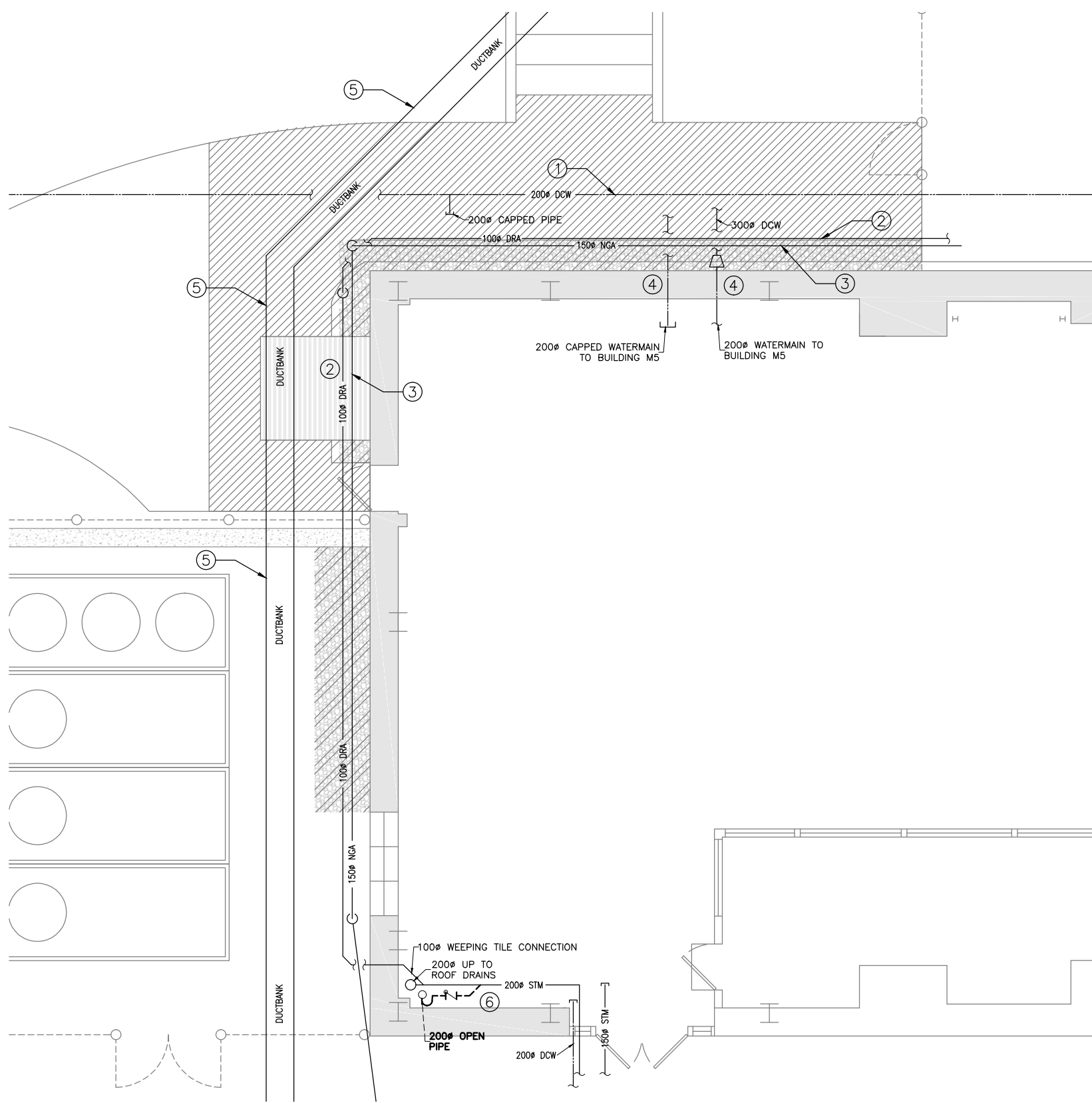
No.	Date	Revision	By:	Par:
0	DD MM YYYY	XXXX		???

Date Printed DD MM YYYY Date imprimée

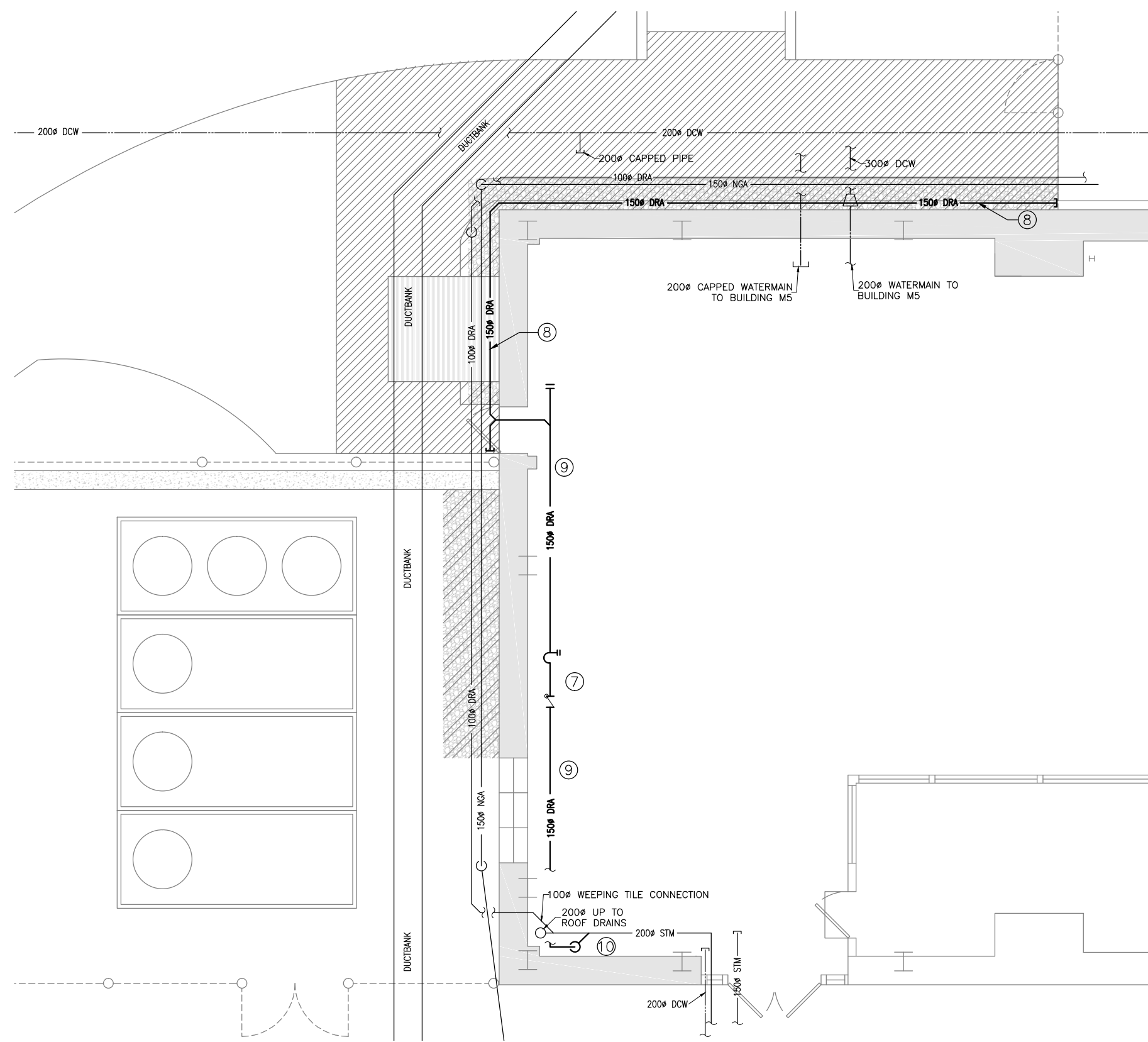
- Verify all dimensions and site conditions and be responsible for same
- Vérifier toutes les dimensions et l'état des lieux et en assumer la responsabilité



project		projet	
M-6 FOUNDATION WATERPROOFING			
MONTREAL ROAD CAMPUS			
drawing		dessin	
SECTIONS AND DETAILS			
designed	conçu	date	date
CE		01/2021	
drawn	dessiné	scale	échelle
CE		AS NOTED	
checked	vérifié	sheet	feuille
JL		3 of/de 3	
approved	approuvé	W.O.no.	D.T.no.
AS			
dwg.no.		dessin no.	
5870-G03			



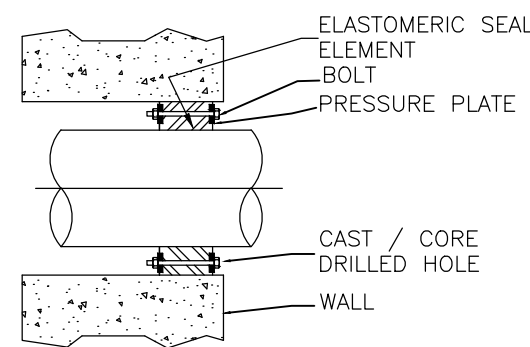
**1**  
G04 PARTIAL PARTITION PLAN - DEMOLITION  
SCALE = 1:150



**2**  
G04 PARTIAL PARTITION PLAN - NEW LAYOUT  
SCALE = 1:150

**DRAWING NOTES - SHEET G04**  
 THESE NOTES APPLY TO DRAWING SHEET G04 ONLY

- EXISTING BURIED 200mm WATER LINE TO REMAIN. APPROX. DEPTH OF 1800mm.
- EXISTING BURIED 100mm WEEPING TILE TO REMAIN. APPROX. DEPTH OF 2000mm. DRAIN LINE SLOPES FOLLOWING EXISTING ROCK LINE AND PENETRATES INTO THE MECHANICAL ROOM AT THE NORTH WEST CORNER AS INDICATED ON DRAWING.
- EXISTING BURIED 150mm HIGH PRESSURE (5000kPa) NATURAL GAS PIPING TO REMAIN. APPROX. DEPTH OF 1000mm. ENSURE THAT PIPING IS REBURIED MEETING THE LATEST SUPPORTS REQUIREMENTS OF THE ONTARIO GAS CODE.
- EXISTING BURIED 200mm DOMESTIC WATER PIPING TO REMAIN. APPROX. DEPTH OF 1150mm. EXISTING PIPING IS HEAT TRACED. WATERMAIN TRACER CABLE TO BE RE-INSTATED BEFORE RE-FILLING.
- EXISTING BURIED ELECTRICAL DUCTBANK TO REMAIN. APPROX. DEPTH OF 1100mm.
- REMOVE EXISTING 200mm STORM PIPING, P-TRAP, PIPING SUPPORTS AND CHECK VALVE, AS INDICATED ON DRAWING.
- PROVIDE TRAP WITH CLEANOUT AND BACKWATER VALVE AS INDICATED ON DRAWING. BACKWATER VALVE TO BE COMPLETE WITH GAS TIGHT AND WATERTIGHT FLAPPER.
- PROVIDE NEW BURIED 150mm PERFORATED RIGID PVC WEEPING TILE (WITH GEOTEXTILE TYPE MEMBRANE) ALONG FOUNDATION WALL AS INDICATED ON DRAWING. PROVIDE PROPER SLOPE FOR DRAINAGE AND UTILIZE 45° ELBOWS AS INDICATED. REFER TO 1/G03 FOR INSTALLATION DEPTH. PROVIDE ADAPTOR TO PVC PIPING PRIOR TO PENETRATING THE FOUNDATION WALL. PVC PIPING TO BE OF TYPE DWV, CONFORMING TO CSA B181.2, MAXIMUM FLAME SPREAD RATING OF 25 AND MAXIMUM SMOKE DENSITY RATING OF 50. REFER TO DETAIL 3/G04 FOR SLEEVE DETAIL ACROSS THE FOUNDATION WALL. SEAL ELEMENT: EPDM, BOLTS/NUTS: ZINC DICHROMATE/ORGANIC COATED CARBON STEEL BOLT, PRESSURE PLATE: REINFORCED NYLON POLYMER. BASED ON MODEL LINK-SEAL BY GPT INDUSTRIES.
- PROVIDE NEW 150mm DRAINAGE PIPING. PROVIDE PROPER PIPE SUPPORTS AND HANGER. PIPING IS TO BE SUPPORTED FROM WALLS (USING UNISTRUT P2542 THROUGH P2546). SPACING AS PER NATIONAL PLUMBING CODE. NEW PIPING AND FITTINGS TO BE OF CAST IRON WITH FACTORY APPLIED CORROSION RESISTANT COATING INSIDE AND OUTSIDE, HUB AND SPIGOT, WITH FOUR (4) STAINLESS STEEL CLAMPS AND NEOPRENE GASKET TO CSA B70.M. PROVIDE ADAPTOR FROM PVC TO CAST IRON AFTER BUILDING PENETRATION. RUN PIPING TO MAIN STORM SEWER WITH UNIFORM GRADE 1:100 IN DIRECTION OF FLOW. JOINTING OF PIPE TO BE COMPATIBLE WITH TYPE OF PIPE USED.
- CONNECT NEW 150mm DRAINAGE PIPING TO EXISTING 200mm STORM PIPING.

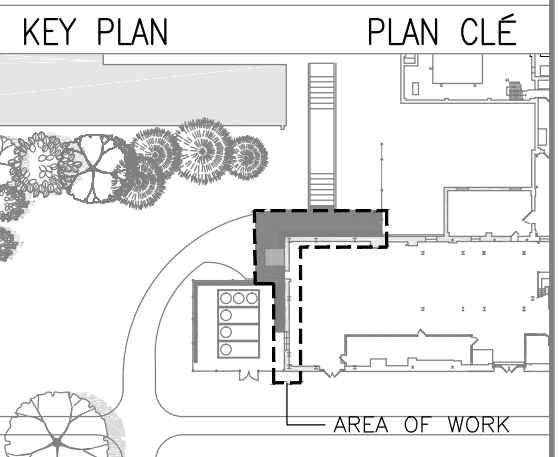


**3**  
G04 SLEEVE ACROSS THE FOUNDATION WALL  
SCALE = NTS

**GENERAL NOTES**

- REFER TO GENERAL NOTES ON DRAWING 5870-G1, 5870-G2, AND 5870-G3.
- INFORMATION ON DEPTH OF PIPING AND SERVICES IS BASED ON AVAILABLE DRAWINGS AND MAY NOT BE ACCURATE. CONTRACTOR TO HIRE A COMPANY SPECIALIZING IN TRACING UNDERGROUND SERVICES PRIOR TO EXCAVATION.
- ALL PIPE IDENTIFICATION MARKERS (CAUTION TAPE) REMOVED DURING CONSTRUCTION TO BE REPLACED WITH NEW.

LINE	DESCRIPTION
---	INDICATES NEW
---	INDICATES EXISTING (TO REMAIN)
---	INDICATES DEMOLISHED/ REMOVED
---DCW---	DOMESTIC COLD WATER
---STM---	STORM WATER PIPING
---DRA---	DRAINAGE PIPING
---NGA---	NATURAL GAS PIPING
○	PIPE UP
○	PIPE DOWN
-H-	CLEANOUT
-T-	TRAP WITH CLEANOUT
-B-	BACKWATER VALVE
-C-	CHP



No.	Date	Revision	By:	Par:
0	DD MM YYYY	XXXX	???	???

Date Printed DD MM YYYY Date imprimée

- Verify all dimensions and site conditions and be responsible for same
- Vérifier toutes les dimensions et l'état des lieux et en assumer la responsabilité

A	A Detail no. No. du détail	A
B	B Location drawing no. sur dessin no.	B
C	C Drawing no. dessin no.	C

project	M-6 FOUNDATION WATERPROOFING			projet
MONTREAL ROAD CAMPUS				
drawing	PARTIAL PLAN - MECHANICAL DEMOLITION AND NEW LAYOUT			dessin
designed	ZF	conçu	date	01/2021
drawn	ZF	dessiné	scale	AS NOTED
checked	JL	vérifié	sheet	4 of/de 4
approved	AS	approuvé	W.O.no.	D.T.no.
dwg.no.	5870-G04			dessin no.

