

KEY PLAN

1	2021.01.25	Issued for 100% REVIEW / SUBMISSION FOUR 100% EXAMEN
6	2021.01.18	Released for 100% REVIEW / SUBMISSION FOUR 100% EXAMEN
5	2021.01.12	Released for 100% REVIEW / SUBMISSION FOUR 100% EXAMEN
4	2020.12.11	Issued for 100% REVIEW / SUBMISSION FOUR 100% EXAMEN
3	2020.11.18	Issued for 99% REVIEW / SUBMISSION FOUR 99% EXAMEN
2	2020.10.23	Issued for 66% REVIEW / SUBMISSION FOUR 66% EXAMEN
1	2020.10.16	Issued for 33% REVIEW / SUBMISSION FOUR 33% EXAMEN

NO. DATE REVISION

DRAWINGS AND SPECIFICATIONS, AS INSTRUMENTS OF SERVICE ARE THE PROPERTY OF THE DESIGNER. THE COPYRIGHT IN THE SAME BEING RESERVED TO THEM. NO REPRODUCTION MAY BE MADE WITHOUT THE WRITTEN PERMISSION OF THE DESIGNER, AND WHEN MADE, MUST BEAR THEIR NAMES.

THE CONTRACTOR IS TO VERIFY DIMENSIONS AND DATA NOTED HERE-IN WITH CONDITIONS ON THE SITE AND IS HELD RESPONSIBLE FOR REPORTING ANY DISCREPANCIES TO THE DESIGNERS FOR ADJUSTMENT.

STAMP	PROJECT NORTH

A	A	DETAIL NUMBER	A
B	B	LOCATION ON DRAWING NO.	B
C	C	DRAWING NUMBER	C

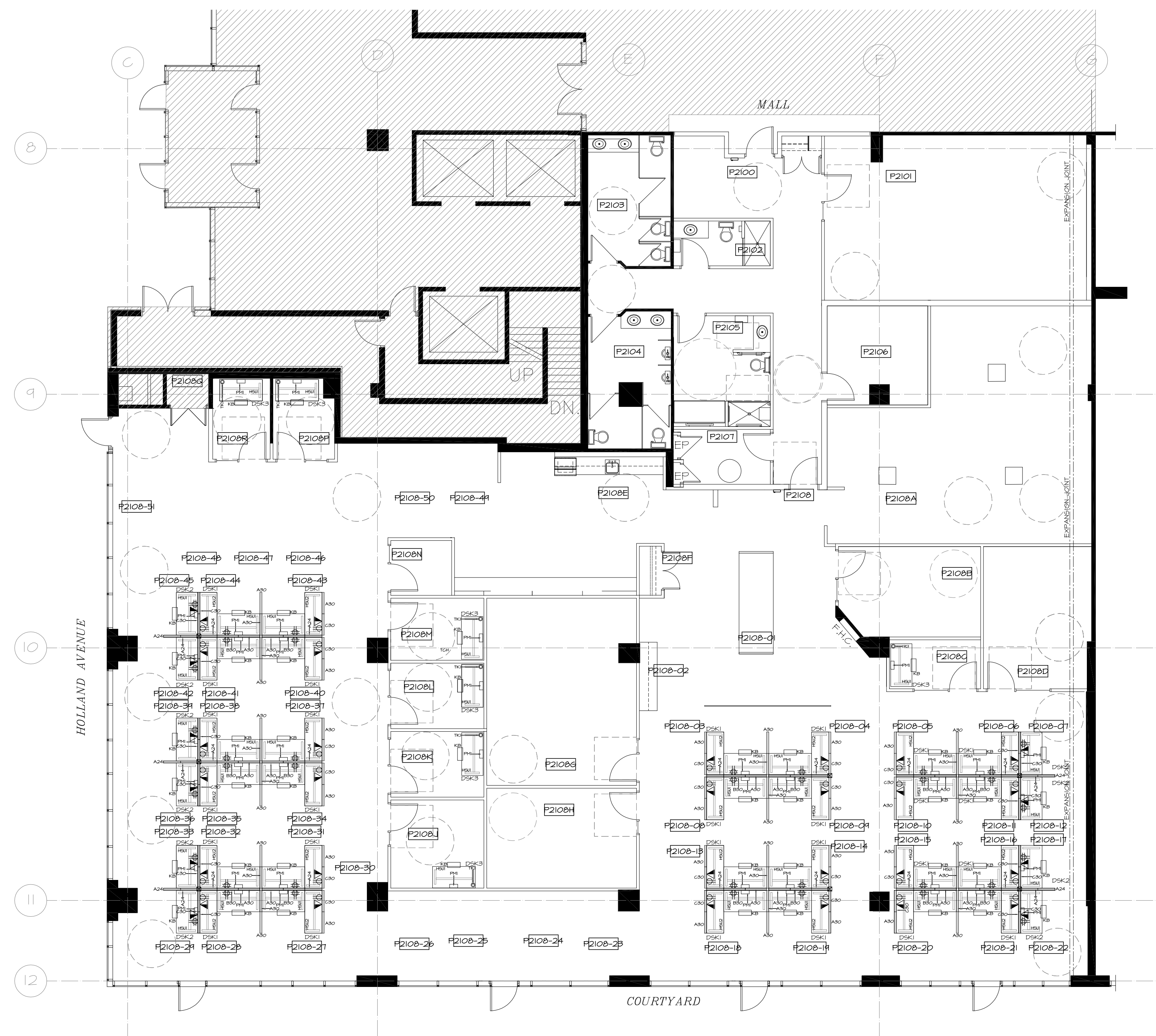
PROJECT
 HOLLAND CROSS OFFICE
 SPACE FIT-UP (GC
 WORKPLACE)
 11 HOLLAND AVENUE
 GROUND FLOOR
 OTTAWA, ON

AMENAGEMENT DE L'ESPACE
 DE BUREAU GROISE HOLLAND
 (GC WORKPLACE)
 11 HOLLAND AVENUE
 REZ-DE-CHAUSSEE
 OTTAWA, ON

DRAWING TITLE
 FURNITURE PLAN
 GROUND FLOOR TOWER A SUITE P21
 CATEGORY 1, 2 & 5

PLAN DE MOBILIER
 REZ-DE-CHAUSSEE TOUR A SUITE P21
 CATEGORIE 1, 2 & 5

SCALE	DRAWN BY	DESIGNED BY
AS NOTED	JB	JB
DATE	CHECKED BY	
SEPTEMBER, 2020	SAS	
PROJECT NO.	DRAWING NO.	
20086	ID-1.0	



1 FURNITURE PLAN - GROUND FLOOR / PLAN DE MOBILIER REZ-DE-CHAUSSEE
 ID-1.0 SCALE: 1:100

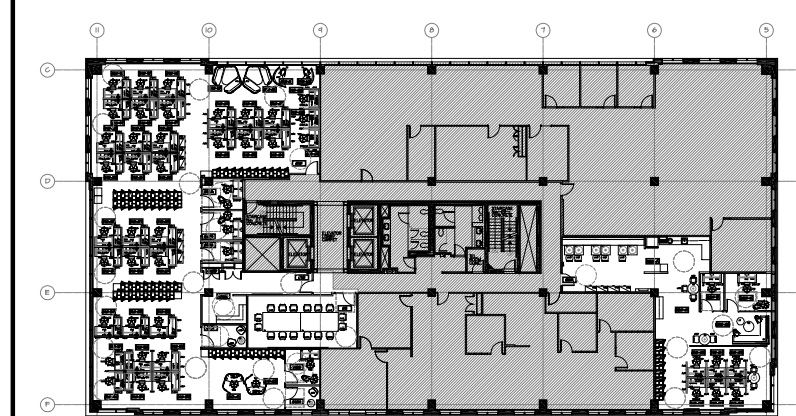
LEGEND
 LEGENDE

DUPLEX RECEPTACLE
 PRISE DE COURANT DOUBLE

QUADRUPLEX RECEPTACLE
 PRISE DE COURANT QUADRUPLER

DATA
 BOITIER POUR INFORMATIQUE

POWER POLE
 POTEAU ELECTRIQUE
 CEILING HEIGHT 9'-0" ON 1ST
 FLOOR AND 8'-8" ON 6TH FLOOR
 HAUTEUR DU PLAFOND 9'-0" AU 1ER
 ETAGE ET 8'-8" AU 6EME ETAGE



KEY PLAN

7	2021.01.25	Released for 100% REVIEW / SUBMISSION POUR 100% EXAMEN
6	2021.01.18	Released for 100% REVIEW / SUBMISSION POUR 100% EXAMEN
5	2021.01.12	Released for 100% REVIEW / SUBMISSION POUR 100% EXAMEN
4	2020.12.11	Issued for 100% REVIEW / SUBMISSION POUR 100% EXAMEN
3	2020.11.16	Issued for 99% REVIEW / SUBMISSION POUR 99% EXAMEN
2	2020.10.23	Issued for 66% REVIEW / SUBMISSION POUR 66% EXAMEN
1	2020.10.16	Issued for 33% REVIEW / SUBMISSION POUR 33% EXAMEN

NO.	DATE	REVISION
-----	------	----------

DRAWINGS AND SPECIFICATIONS, AS INSTRUMENTS OF SERVICE ARE THE PROPERTY OF THE DESIGNER. THE COPYRIGHT IN THE SAME BEING RESERVED TO THEM. NO REPRODUCTION MAY BE MADE WITHOUT THE WRITTEN PERMISSION OF THE DESIGNER, AND WHEN MADE, MUST BEAR THEIR NAMES.

THE CONTRACTOR IS TO VERIFY DIMENSIONS AND DATA NOTED HERE-IN WITH CONDITIONS ON THE SITE AND IS HELD RESPONSIBLE FOR REPORTING ANY DISCREPANCIES TO THE DESIGNERS FOR ADJUSTMENT.

STAMP	PROJECT NORTH
-------	-------------------

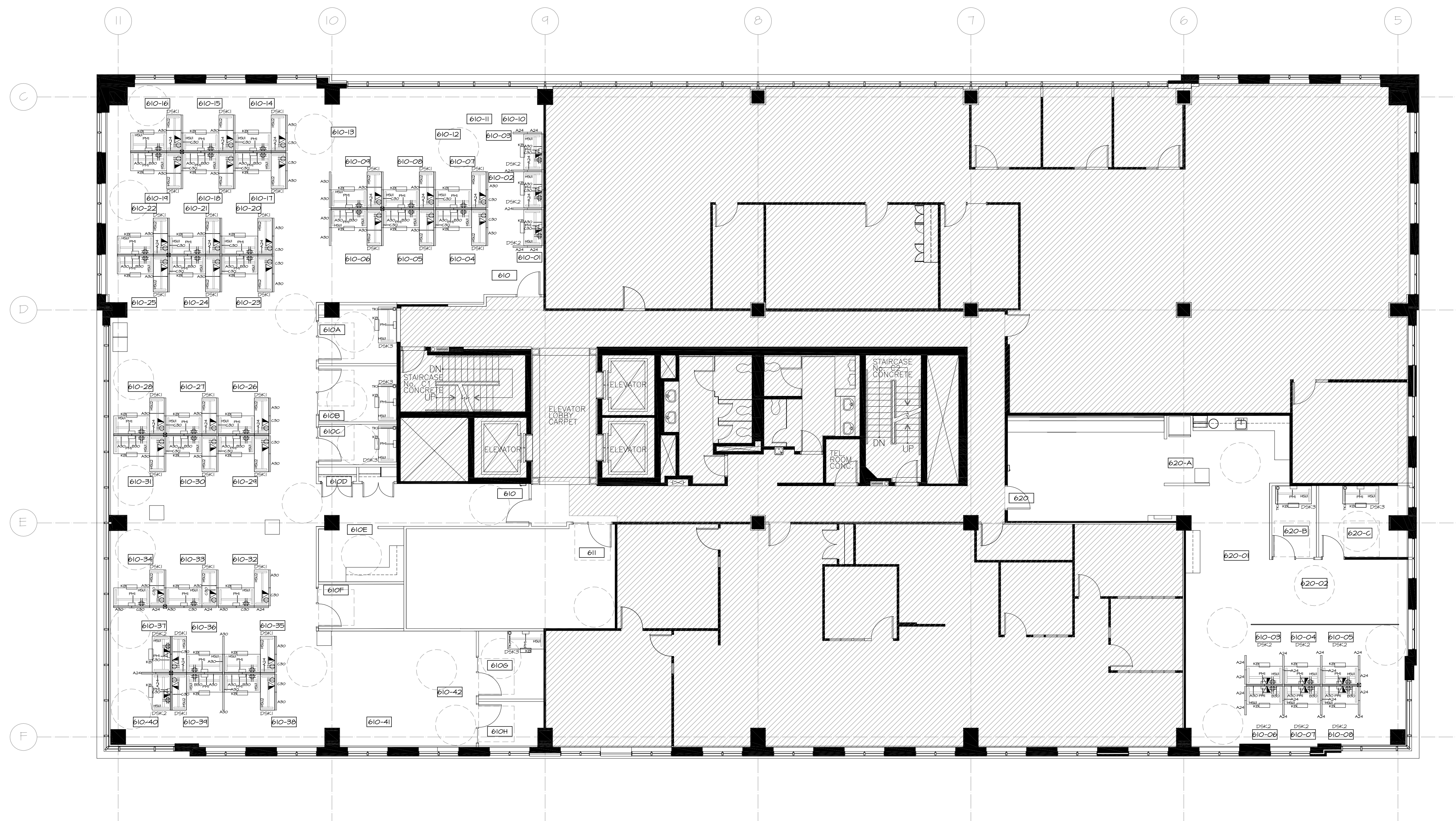
A	DETAIL NUMBER	A
B	LOCATION ON DRAWING NO.	B
C	DRAWING NUMBER	C

PROJECT
 HOLLAND CROSS OFFICE
 SPACE FIT-UP (GC
 WORKPLACE)
 1620 SCOTT STREET
 6TH FLOOR
 OTTAWA, ON
 AMENAGEMENT DE L'ESPACE
 DE BUREAU CROISE HOLLAND
 (GC WORKPLACE)
 1620, RUE SCOTT
 6EME ETAGE
 OTTAWA, ON

DRAWING TITLE
 FURNITURE PLAN
 6TH FLOOR TOWER B SUITE 610 & 620
 CATEGORY 1, 2 & 5

PLAN DE MOBILIER
 6E ETAGE TOUR B SUITE 610 & 620
 CATEGORIE 1, 2 & 5

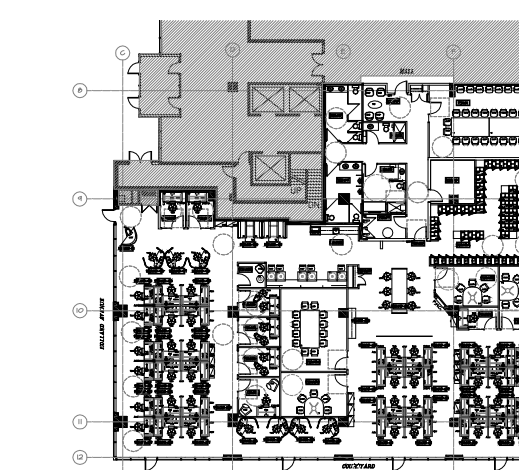
SCALE	AS NOTED	DRAWN BY	DESIGNED BY
DATE	SEPTEMBER, 2020	JB	JB
PROJECT NO.	20086	CHECKED BY	SA5
		DRAWING NO.	ID-1.1



I FURNITURE PLAN - 6TH FLOOR / PLAN DE MOBILIER 6E ETAGE
 ID-1.1 SCALE: 1:100

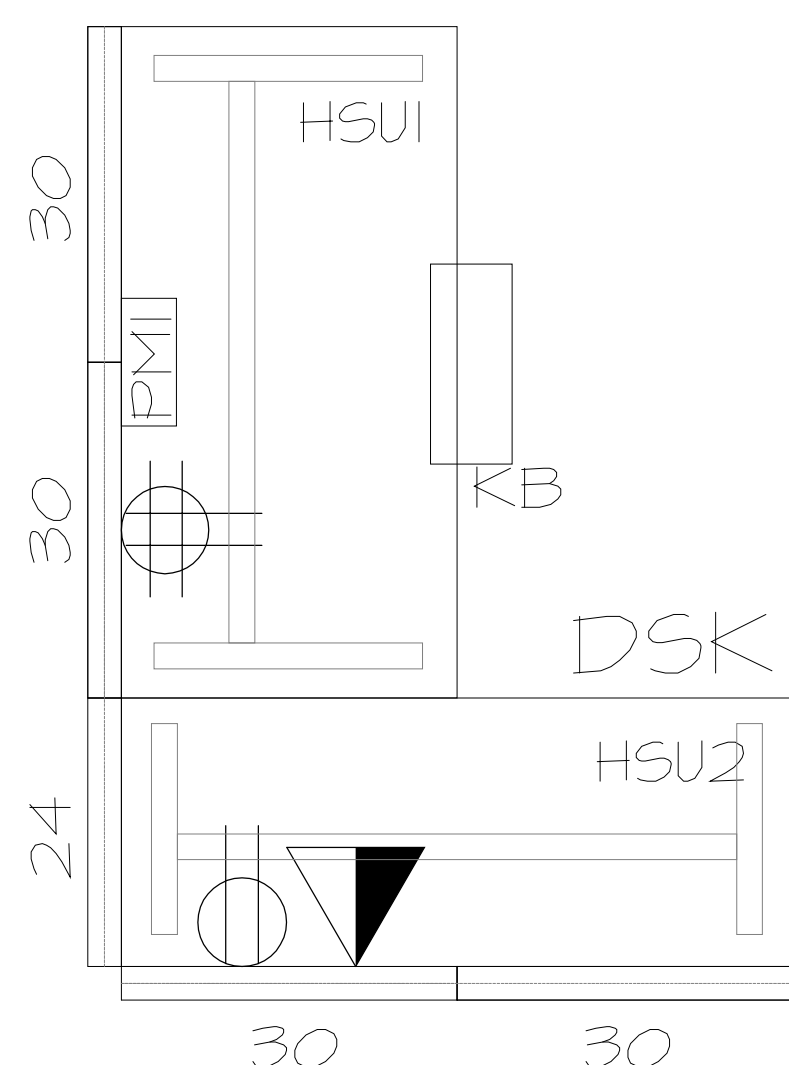
LEGEND
 LEGENDE

- DUPLEX RECEPTACLE
PRISE DE COURANT DOUBLE
- QUADRIPLEX RECEPTACLE
PRISE DE COURANT QUADRUPLER
- DATA
BOITIER POUR INFORMATIQUE
- POWER POLE
POTEAU ELECTRIQUE
CEILING HEIGHT 9'-0" ON 1ST
FLOOR AND 8'-8" ON 6TH FLOOR
HAUTEUR DU PLAFOND 9'-0" AU 1ER
ETAGE ET 8'-8" AU 6EME ETAGE



KEY PLAN

TYPICAL WORKSTATION - DSK1 POSTE DE TRAVAIL TYPIQUE - DSK1



CATEGORY 1 / CATEGORIE 1
REFER TO FLOOR PLANS / SE REFERER AUX PLANS

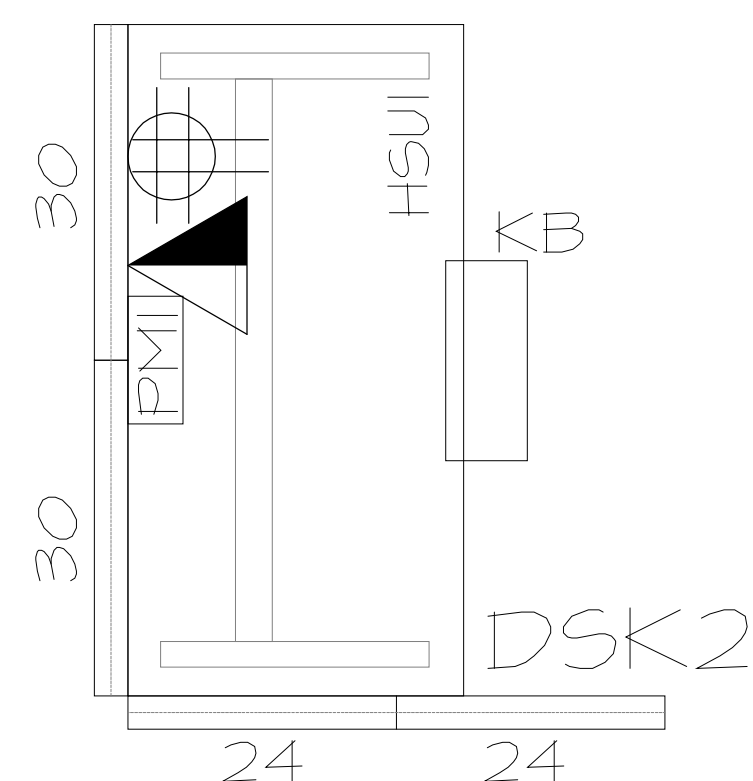
CATEGORY 2 / CATEGORIE 2
 HSU 1 1524MM (60") X 762MM (30") HEIGHT ADJUSTABLE WORK SURFACE, HIGH PRESSURE LAMINATE, ELECTRICALLY ASSISTED
 HSU 1 1524MM (60") X 762MM (30") SURFACE DE TRAVAIL, SURFACE DE TRAVAIL REGLABLE EN HAUTEUR, FINITION STRATIFIEE EN PLASTIQUE HAUTE PRESSION, ELECTRIQUE
 HSU 2 1524MM (60") X 610MM (24") HEIGHT ADJUSTABLE WORK SURFACE, HIGH PRESSURE LAMINATE, ELECTRICALLY ASSISTED
 HSU 2 1524MM (60") X 610MM (24") SURFACE DE TRAVAIL REGLABLE EN HAUTEUR, FINITION STRATIFIEE EN PLASTIQUE HAUTE PRESSION, ELECTRIQUE

CATEGORY 5 / CATEGORIE 5
 PMI DESK TOP POWER MODULE WITH 1 DUPLEX AND 2 USB PORTS
 PMI MODULE DE PUISSANCE, SUR SURFACE DE TRAVAIL, ALIMENTATION 1 DUPLEX ET 2 PORTS USB

KB ERGONOMIC KEYBOARD AND MOUSE TRAY
 KB CLAVIER ERGONOMIQUE ET PLATEAU A SOURIS

LEGEND LEGENDE	
	DUPLEX RECEPTACLE PRISE DE COURANT DOUBLE
	QUADRAPLEX RECEPTACLE PRISE DE COURANT QUADRUPLER
	DATA BOITIER POUR INFORMATIQUE
	POWER POLE POTEAU ELECTRIQUE CEILING HEIGHT 9'-0" ON 1ST FLOOR AND 8'-8" ON 6TH FLOOR HAUTEUR DU PLAFOND 9'-0" AU 1ER ETAGE ET 8'-8" AU 6EME ETAGE

TYPICAL TOUCHDOWN - DSK2 POINT DE TRANSITION TYPIQUE - DSK2



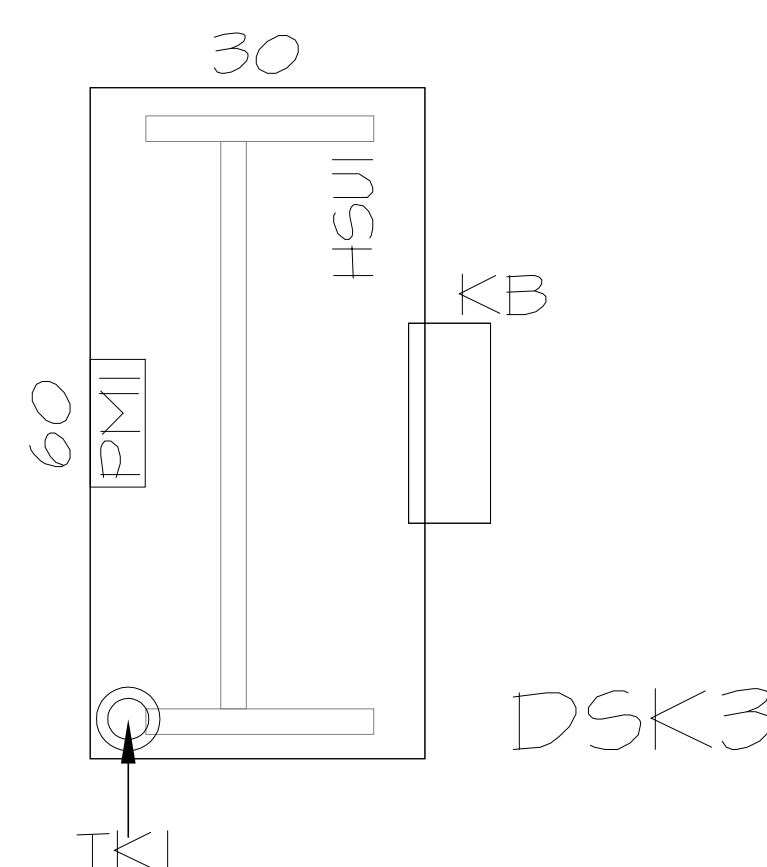
CATEGORY 1 / CATEGORIE 1
REFER TO FLOOR PLANS / SE REFERER AUX PLANS

CATEGORY 2 / CATEGORIE 2
 HSU 1 1524MM (60") X 762MM (30") HEIGHT ADJUSTABLE WORK SURFACE, HIGH PRESSURE LAMINATE, ELECTRICALLY ASSISTED
 HSU 1 1524MM (60") X 762MM (30") SURFACE DE TRAVAIL, SURFACE DE TRAVAIL REGLABLE EN HAUTEUR, FINITION STRATIFIEE EN PLASTIQUE HAUTE PRESSION, ELECTRIQUE

CATEGORY 5 / CATEGORIE 5
 PMI DESK TOP POWER MODULE WITH 1 DUPLEX AND 2 USB PORTS
 PMI MODULE DE PUISSANCE, SUR SURFACE DE TRAVAIL, ALIMENTATION 1 DUPLEX ET 2 PORTS USB

KB ERGONOMIC KEYBOARD AND MOUSE TRAY
 KB CLAVIER ERGONOMIQUE ET PLATEAU A SOURIS

TYPICAL TOUCHDOWN - DSK3 POINT DE TRANSITION TYPIQUE - DSK3



CATEGORY 1 / CATEGORIE 1
REFER TO FLOOR PLANS / SE REFERER AUX PLANS

CATEGORY 2 / CATEGORIE 2
 HSU 1 1524MM (60") X 762MM (30") HEIGHT ADJUSTABLE WORK SURFACE, HIGH PRESSURE LAMINATE, ELECTRICALLY ASSISTED
 HSU 1 1524MM (60") X 762MM (30") SURFACE DE TRAVAIL, SURFACE DE TRAVAIL REGLABLE EN HAUTEUR, FINITION STRATIFIEE EN PLASTIQUE HAUTE PRESSION, ELECTRIQUE

CATEGORY 5 / CATEGORIE 5
 PMI DESK TOP POWER MODULE WITH 1 DUPLEX AND 2 USB PORTS
 PMI MODULE DE PUISSANCE, SUR SURFACE DE TRAVAIL, ALIMENTATION 1 DUPLEX ET 2 PORTS USB

KB ERGONOMIC KEYBOARD AND MOUSE TRAY
 KB CLAVIER ERGONOMIQUE ET PLATEAU A SOURIS

TK1 DESK BASE TASK LIGHT WITH USB POWER
 TK1 LUMIERE DE TRAVAIL DE LA BASE DE BUREAU AVEC PUISSANCE USB

NO.	DATE	REVISION
1	2021.01.25	reissued for 100% REVIEW / SUBMISSION POUR 100% EXAMEN
6	2021.01.18	reissued for 100% REVIEW / SUBMISSION POUR 100% EXAMEN
5	2021.01.12	reissued for 100% REVIEW / SUBMISSION POUR 100% EXAMEN
4	2020.12.11	Issued for 100% REVIEW / SUBMISSION POUR 100% EXAMEN
3	2020.11.18	Issued for 99% REVIEW / SUBMISSION POUR 99% EXAMEN
2	2020.10.23	Issued for 66% REVIEW / SUBMISSION POUR 66% EXAMEN
1	2020.10.16	Issued for 33% REVIEW / SUBMISSION POUR 33% EXAMEN

DRAWINGS AND SPECIFICATIONS, AS INSTRUMENTS OF SERVICE ARE THE PROPERTY OF THE DESIGNER. THE COPYRIGHT IN THE SAME BEING RESERVED TO THEM. NO REPRODUCTION MAY BE MADE WITHOUT THE WRITTEN PERMISSION OF THE DESIGNER, AND WHEN MADE, MUST BEAR THEIR NAMES.

THE CONTRACTOR IS TO VERIFY DIMENSIONS AND DATA NOTED HERE-IN WITH CONDITIONS ON THE SITE AND IS HELD RESPONSIBLE FOR REPORTING ANY DISCREPANCIES TO THE DESIGNERS FOR ADJUSTMENT.

STAMP	PROJECT NORTH
A DETAIL NUMBER	A DETAIL NUMBER
B LOCATION ON DRAWING NO.	B LOCATION ON DRAWING NO.
C DRAWING NUMBER	C DRAWING NUMBER

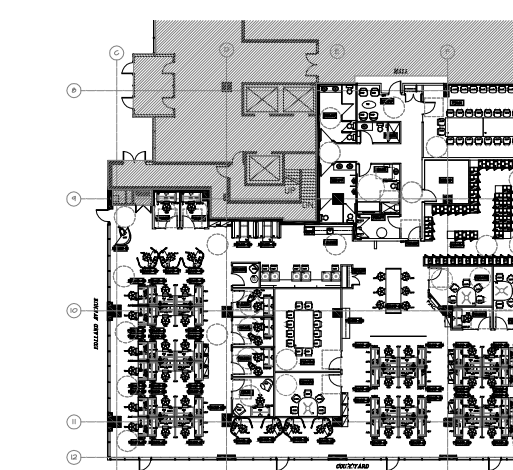
PROJECT
 HOLLAND CROSS OFFICE
 SPACE FIT-UP (6C
 WORKPLACE)
 11 HOLLAND AVENUE GROUND FLOOR
 / 1620 SCOTT STREET, 6TH FLOOR
 OTTAWA, ON

AMENAGEMENT DE L'ESPACE
 DE BUREAU GROISE HOLLAND
 (6C WORKPLACE)
 11 HOLLAND AVENUE, REZ-DE-CHAUSSEE
 / 1620 RUE SCOTT 6EME ETAGE
 OTTAWA, ON

DRAWING TITLE
 TYPICAL DATA SHEET &
 PANEL MATRIX
 GROUND FLOOR TOWER A SUITE P21
 6TH FLOOR TOWER B SUITE 610 & 620
 CATEGORY 1, 2 & 5

FEUILLE D'INFORMATION
 TYPIQUE & MATRICE DE
 PANNEAU
 REZ-DE-CHAUSSEE TOUR A SUITE P21
 6E ETAGE TOUR B SUITE 610 & 620
 CATEGORIE 1, 2 & 5

SCALE AS NOTED	DRAWN BY JB	DESIGNED BY JB
DATE SEPTEMBER, 2020	CHECKED BY SAS	
PROJECT NO. 20086	DRAWING NO. 1D-1.2	



KEY PLAN

PANEL TYPE / TYPE DE PANNEAU: A
 PANEL HEIGHT / HAUTEUR DES CLOISONS: SEATED PRIVACY ADD-ON /
 PANNEAU ADDITIONNEL POUR INTIMITE EN POSITION ASSISE

UPPER ELEMENT 1 / ELEMENT SUPERIEUR 1	UPPER ELEMENT 2 / ELEMENT SUPERIEUR 2
GLASS / VERRE	GLASS / VERRE
LOWER ELEMENT 1 / ELEMENT INFERIEUR 1	LOWER ELEMENT 2 / ELEMENT INFERIEUR 2
FABRIC / TISSU	FABRIC / TISSU

SIDE / COTE 1

SIDE / COTE 2

PANEL TYPE / TYPE DE PANNEAU: B
 PANEL HEIGHT / HAUTEUR DES CLOISONS: SEATED PRIVACY ADD-ON /
 PANNEAU ADDITIONNEL POUR INTIMITE EN POSITION ASSISE

UPPER ELEMENT 1 / ELEMENT SUPERIEUR 1	UPPER ELEMENT 2 / ELEMENT SUPERIEUR 2
GLASS / VERRE	GLASS / VERRE
LOWER ELEMENT 1 / ELEMENT INFERIEUR 1	LOWER ELEMENT 2 / ELEMENT INFERIEUR 2
CUT-OUTS FOR POWER & DATA, FABRIC - BELOW THE WORKSURFACE / CAVITESSES FINIES POUR L'INSERTION DE PRISES ELECTRIQUE, FABRIC - CI-DESSUS DE LA SURFACE	CUT-OUTS FOR POWER & DATA, FABRIC - BELOW THE WORKSURFACE / CAVITESSES FINIES POUR L'INSERTION DE PRISES ELECTRIQUE, FABRIC - CI-DESSUS DE LA SURFACE

SIDE / COTE 1

SIDE / COTE 2

PANEL TYPE / TYPE DE PANNEAU: C
 PANEL HEIGHT / HAUTEUR DES CLOISONS: SEATED PRIVACY ADD-ON /
 PANNEAU ADDITIONNEL POUR INTIMITE EN POSITION ASSISE

UPPER ELEMENT 1 / ELEMENT SUPERIEUR 1	UPPER ELEMENT 2 / ELEMENT SUPERIEUR 2
GLASS / VERRE	GLASS / VERRE
LOWER ELEMENT 1 / ELEMENT INFERIEUR 1	LOWER ELEMENT 2 / ELEMENT INFERIEUR 2
CUT-OUTS FOR POWER & DATA, FABRIC - BELOW THE WORKSURFACE / CAVITESSES FINIES POUR L'INSERTION DE PRISES ELECTRIQUE, FABRIC - CI-DESSUS DE LA SURFACE	FABRIC / TISSU

SIDE / COTE 1

SIDE / COTE 2

1	2021.01.25	reissued for 100% REVIEW / SUBMISSION FOUR 100% EXAMEN
6	2021.01.18	reissued for 100% REVIEW / SUBMISSION FOUR 100% EXAMEN
5	2021.01.12	reissued for 100% REVIEW / SUBMISSION FOUR 100% EXAMEN
4	2020.12.11	Issued for 100% REVIEW / SUBMISSION FOUR 100% EXAMEN
3	2020.11.18	Issued for 99% REVIEW / SUBMISSION FOUR 99% EXAMEN
2	2020.10.23	Issued for 66% REVIEW / SUBMISSION FOUR 66% EXAMEN
1	2020.10.16	Issued for 33% REVIEW / SUBMISSION FOUR 33% EXAMEN

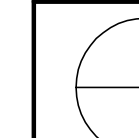
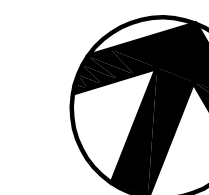
NO. DATE REVISION

DRAWINGS AND SPECIFICATIONS, AS INSTRUMENTS OF SERVICE ARE THE PROPERTY OF THE DESIGNER. THE COPYRIGHT IN THE SAME BEING RESERVED TO THEM. NO REPRODUCTION MAY BE MADE WITHOUT THE WRITTEN PERMISSION OF THE DESIGNER, AND WHEN MADE, MUST BEAR THEIR NAMES.

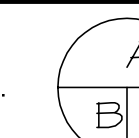
THE CONTRACTOR IS TO VERIFY DIMENSIONS AND DATA NOTED HERE-IN WITH CONDITIONS ON THE SITE AND IS HELD RESPONSIBLE FOR REPORTING ANY DISCREPANCIES TO THE DESIGNERS FOR ADJUSTMENT.

STAMP

PROJECT NORTH



A DETAIL NUMBER
 B LOCATION ON DRAWING NO.
 C DRAWING NUMBER



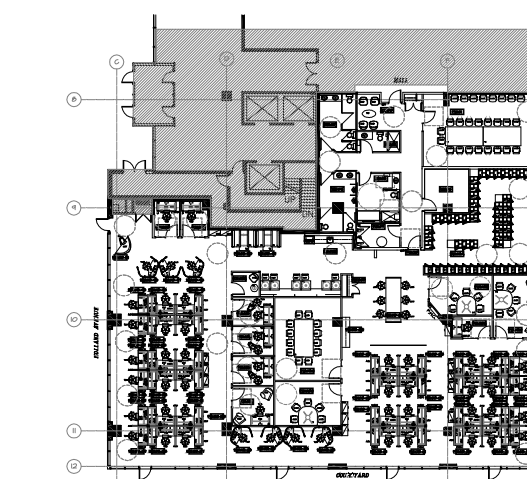
PROJECT
 HOLLAND CROSS OFFICE
 SPACE FIT-UP (GC
 WORKPLACE)
 11 HOLLAND AVENUE GROUND FLOOR
 / 1620 SCOTT STREET, 6TH FLOOR
 OTTAWA, ON

AMENAGEMENT DE L'ESPACE
 DE BUREAU CROISE HOLLAND
 (GC WORKPLACE)
 11 HOLLAND AVENUE, REZ-DE-CHAUSSEE
 / 1620 RUE SCOTT 6EME ETAGE
 OTTAWA, ON

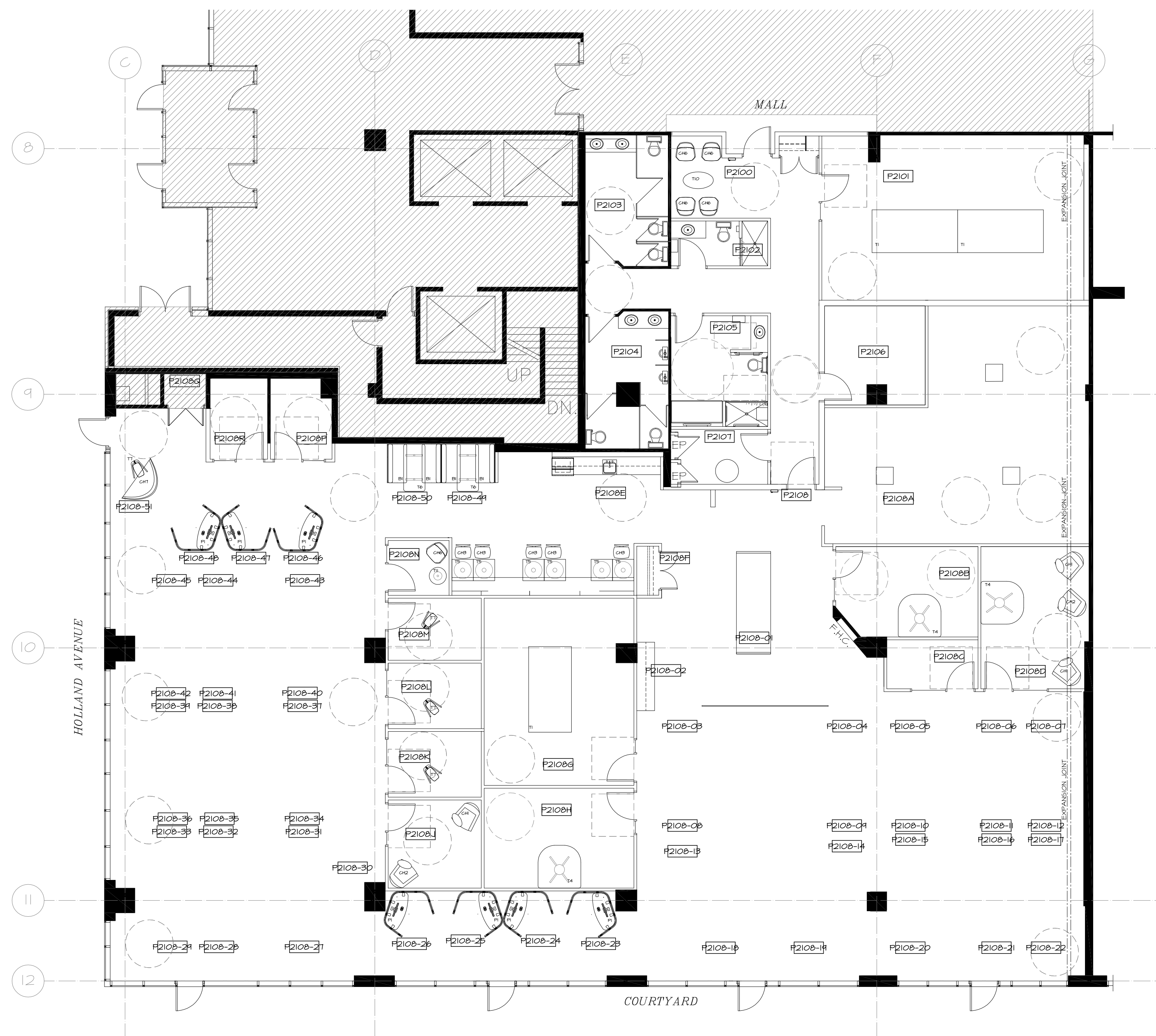
DRAWING TITLE
 TYPICAL DATA SHEET &
 PANEL MATRIX
 GROUND FLOOR TOWER A SUITE P21
 6TH FLOOR TOWER B SUITE 610 & 620
 CATEGORY 1, 2 & 5

FEUILLE D'INFORMATION
 TYPIQUE & MATRICE DE
 PANNEAU
 REZ-DE-CHAUSSEE TOUR A SUITE P21
 6E ETAGE TOUR B SUITE 610 & 620
 CATEGORIE 1, 2 & 5

SCALE AS NOTED	DRAWN BY JB	DESIGNED BY JB
DATE SEPTEMBER, 2020	CHECKED BY SAS	
PROJECT NO. 20086	DRAWING NO. 1D-1.3	



KEY PLAN



1 FURNITURE PLAN - GROUND FLOOR / PLAN DE MOBILIER REZ-DE-CHAUSSEE
 1D-1.4 SCALE: 1:100

1	2021.01.25	reissued for 100% REVIEW / SUBMISSION FOUR 100% EXAMEN
6	2021.01.18	reissued for 100% REVIEW / SUBMISSION FOUR 100% EXAMEN
3	2021.01.12	reissued for 100% REVIEW / SUBMISSION FOUR 100% EXAMEN
4	2020.12.11	Issued for 100% REVIEW / SUBMISSION FOUR 100% EXAMEN
5	2020.11.18	Issued for 49% REVIEW / SUBMISSION FOUR 49% EXAMEN
2	2020.10.23	Issued for 66% REVIEW / SUBMISSION FOUR 66% EXAMEN
1	2020.10.16	Issued for 33% REVIEW / SUBMISSION FOUR 33% EXAMEN

NO. DATE REVISION

DRAWINGS AND SPECIFICATIONS, AS INSTRUMENTS OF SERVICE ARE THE PROPERTY OF THE DESIGNER. THE COPYRIGHT IN THE SAME BEING RESERVED TO THEM. NO REPRODUCTION MAY BE MADE WITHOUT THE WRITTEN PERMISSION OF THE DESIGNER, AND WHEN MADE, MUST BEAR THEIR NAMES.

THE CONTRACTOR IS TO VERIFY DIMENSIONS AND DATA NOTED HERE-IN WITH CONDITIONS ON THE SITE AND IS HELD RESPONSIBLE FOR REPORTING ANY DISCREPANCIES TO THE DESIGNERS FOR ADJUSTMENT.

STAMP	PROJECT NORTH

A	DETAIL NUMBER	A
B	LOCATION ON DRAWING NO.	B
C	DRAWING NUMBER	C

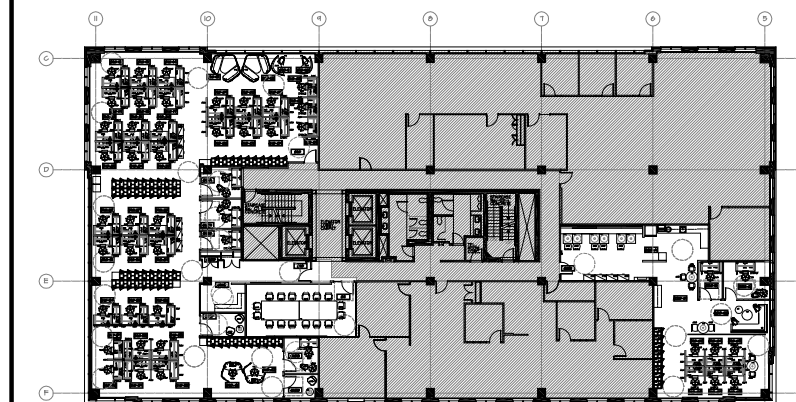
PROJECT
 HOLLAND CROSS OFFICE
 SPACE FIT-UP (GC
 WORKPLACE)
 11 HOLLAND AVENUE
 GROUND FLOOR
 OTTAWA, ON

AMENAGEMENT DE L'ESPACE
 DE BUREAU GROISE HOLLAND
 (GC WORKPLACE)
 11 HOLLAND AVENUE
 REZ-DE-CHAUSSEE
 OTTAWA, ON

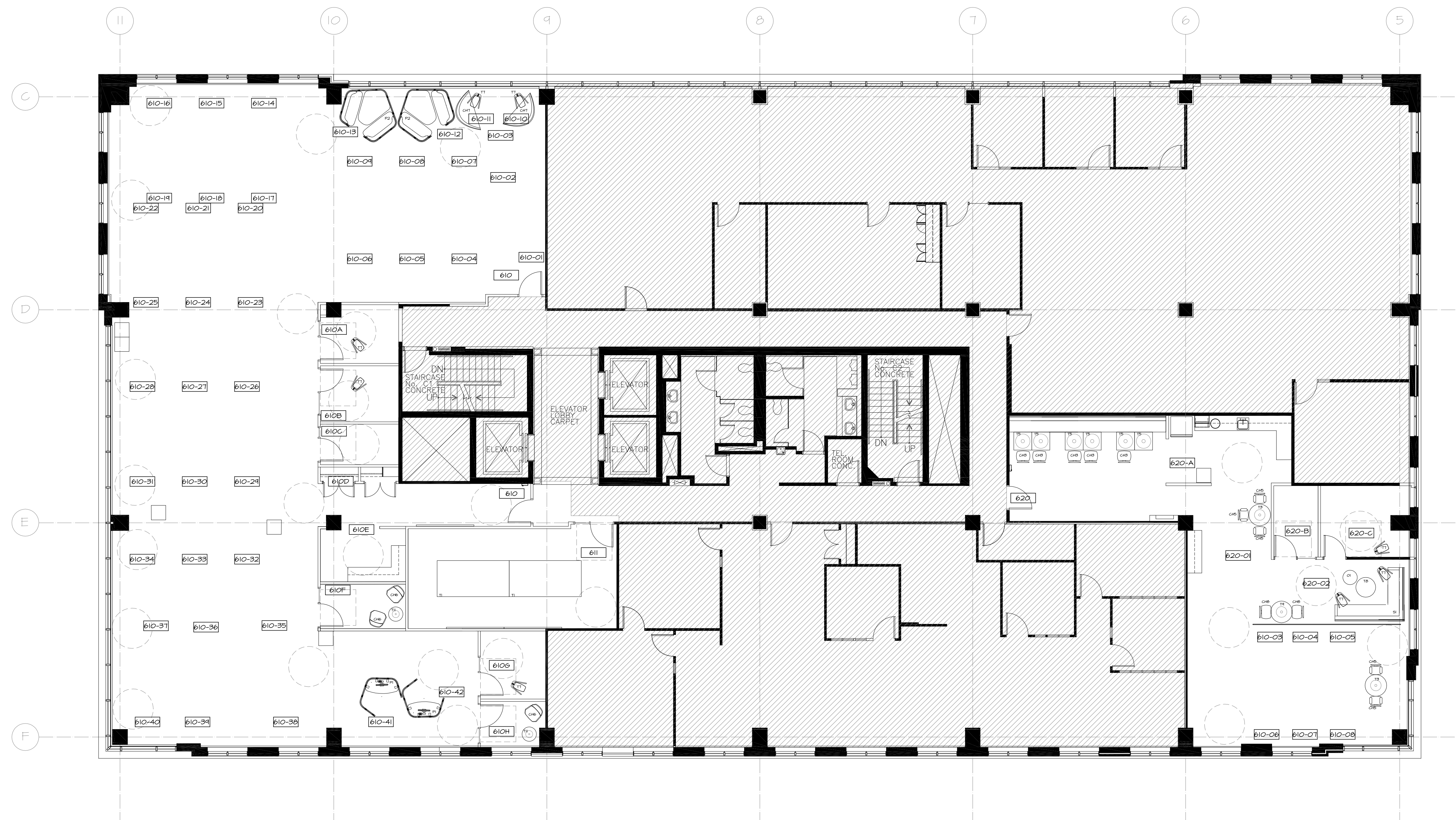
DRAWING TITLE
 FURNITURE PLAN
 GROUND FLOOR TOWER A SUITE P21
 CATEGORY 6

PLAN DE MOBILIER
 REZ-DE-CHAUSSEE TOUR A SUITE P21
 CATEGORIE 6

SCALE	DRAWN BY	DESIGNED BY
AS NOTED	JB	JB
DATE	CHECKED BY	
SEPTEMBER, 2020	SAS	
PROJECT NO.	DRAWING NO.	
20086	1D-1.4	



KEY PLAN



1 FURNITURE PLAN - 6TH FLOOR / PLAN DE MOBILIER 6E ETAGE
 ID-1.5 SCALE: 1:100

7	2021.01.25	reissued for 100% REVIEW / SUBMISSION FOUR 100% EXAMEN
6	2021.01.18	reissued for 100% REVIEW / SUBMISSION FOUR 100% EXAMEN
5	2021.01.12	reissued for 100% REVIEW / SUBMISSION FOUR 100% EXAMEN
4	2020.12.11	Issued for 100% REVIEW / SUBMISSION FOUR 100% EXAMEN
3	2020.11.16	Issued for 99% REVIEW / SUBMISSION FOUR 99% EXAMEN
2	2020.10.23	Issued for 66% REVIEW / SUBMISSION FOUR 66% EXAMEN
1	2020.10.16	Issued for 33% REVIEW / SUBMISSION FOUR 33% EXAMEN

NO. DATE REVISION

DRAWINGS AND SPECIFICATIONS, AS INSTRUMENTS OF SERVICE ARE THE PROPERTY OF THE DESIGNER. THE COPYRIGHT IN THE SAME BEING RESERVED TO THEM. NO REPRODUCTION MAY BE MADE WITHOUT THE WRITTEN PERMISSION OF THE DESIGNER, AND WHEN MADE, MUST BEAR THEIR NAMES.

THE CONTRACTOR IS TO VERIFY DIMENSIONS AND DATA NOTED HERE-IN WITH CONDITIONS ON THE SITE AND IS HELD RESPONSIBLE FOR REPORTING ANY DISCREPANCIES TO THE DESIGNERS FOR ADJUSTMENT.

STAMP	PROJECT NORTH

A	DETAIL NUMBER	A
B	LOCATION ON DRAWING NO.	B
C	DRAWING NUMBER	C

PROJECT
 HOLLAND CROSS OFFICE
 SPACE FIT-UP (GC
 WORKPLACE)
 1620 SCOTT STREET
 6TH FLOOR
 OTTAWA, ON

AMENAGEMENT DE L'ESPACE
 DE BUREAU GROISE HOLLAND
 (GC WORKPLACE)
 1620, RUE SCOTT
 6EME ETAGE
 OTTAWA, ON

DRAWING TITLE
 FURNITURE PLAN
 6TH FLOOR TOWER B SUITE 610 & 620
 CATEGORY 6

PLAN DE MOBILIER
 6E ETAGE TOUR B SUITE 610 & 620
 CATEGORIE 6

SCALE	AS NOTED	DRAWN BY	DESIGNED BY
DATE	SEPTEMBER, 2020	JB	JB
PROJECT NO.	20086	CHECKED BY	SA5
		DRAWING NO.	ID-1.5