

NORHT ARROW



No	DATE	REVISION	BY
E	2020-12-17	ISSUED FOR TENDER	C.M.S.
D	2020-10-07	ISSUED FOR 100% SUBMISSION	C.M.S.
C	2020-06-30	RE-ISSUED FOR 99% SUBMISSION	C.M.S.
B	2020-01-31	ISSUED FOR 99% REVIEW	C.M.S.
A	2019-03-29	ISSUED FOR 66% REVIEW	C.M.S.

Do not scale drawings. Verify all dimensions and conditions on site and immediately notify the Departmental Representative of all discrepancies.

A B C	A	Detail No.
	B	drawing no. - where detail required
	C	drawing no. - where detailed

project title
titre du projet
COBOURG ON
COBOURG CITY

COBOURG SEARCH AND RESCUE STATION

drawing title
titre du dessin
ELECTRICAL LIGHTING FIRST FLOOR LAYOUT

drawn by
dessiné par
T. CLARK

designed by
conçu par
C. SITKOWSKI

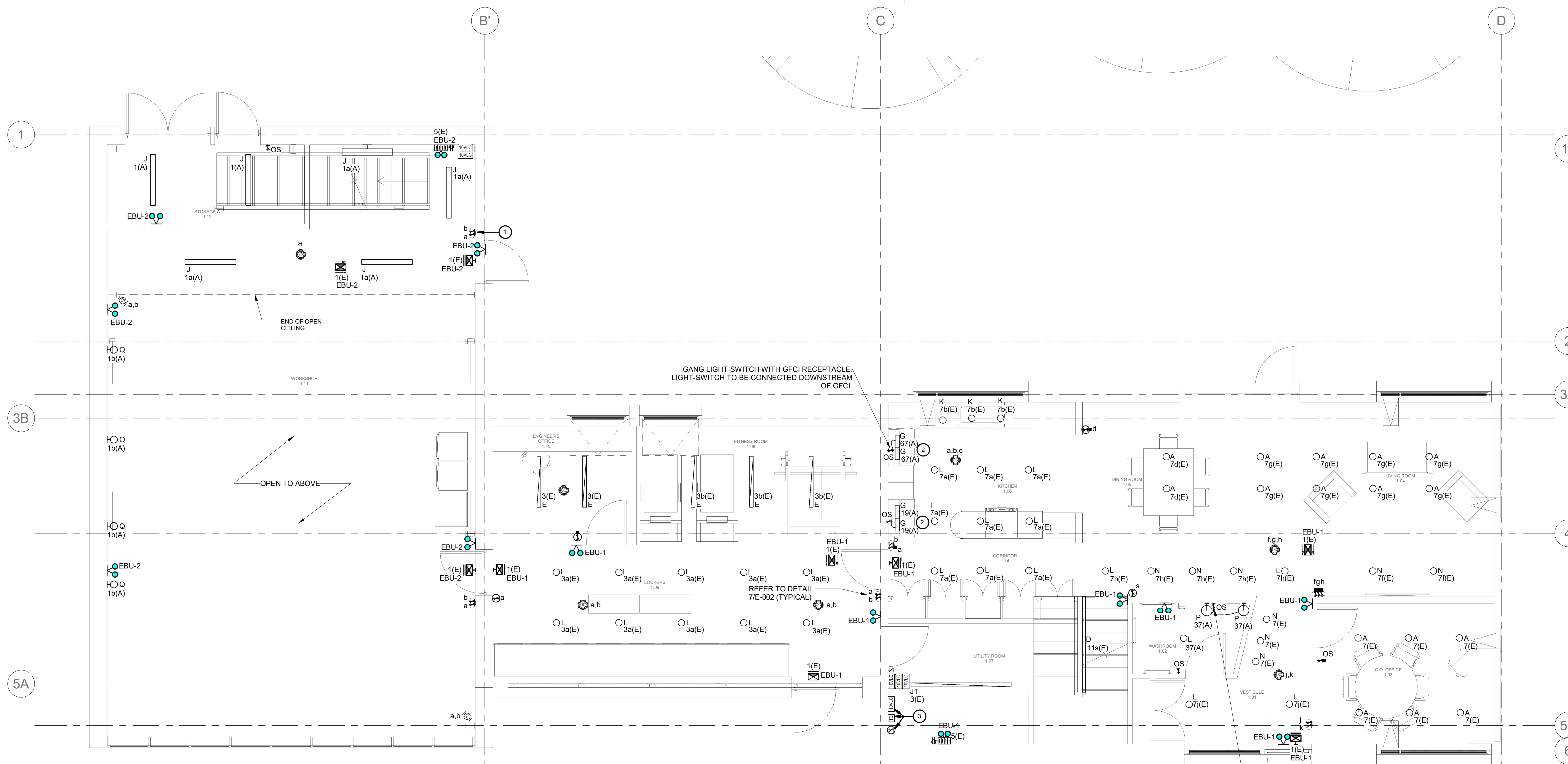
approved by
approuvé par
M. MOORE

bid offer
offre de soumission
ELISABETH OHI project manager
administrateur de projets

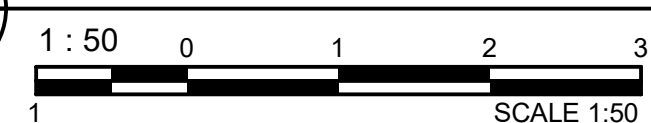
project date
date du projet
20-03-2019

project no.
no. du projet
R.084112.005

drawing no.
dessiné no.
E200



1 FIRST FLOOR - LIGHTING LAYOUT



GENERAL NOTES:

- REFER TO ARCHITECTURAL DRAWING FOR DIMENSIONED LOCATIONS OF LUMINARIES.
- LIGHTING CONTROL COMMUNICATION & 0-10V WIRING SHALL HAVE DEDICATED CONDUIT(S), THESE WIRES SHALL NOT SHARE CONDUIT(S) WITH POWER.
- LIGHTING ZONE(S) ARE DEFINED WITHIN ROOMS/AREAS.
- IN AREAS WITH EXPOSED CEILINGS, PROVIDE PENDANT STEM KITS TO SUSPEND OCCUPANCY SENSOR TO 3,200mm A.F.F.
- IN EXPOSED AND INACCESSIBLE CEILINGS, ROUTE COMMUNICATION AND 0-10V WIRING IN EMT, IN ACCESSIBLE CEILINGS, PROVIDE J-HOOKS AND VELCO STRAPS FOR 0-10V COMMUNICATION AND 0-10V WIRING.
- IN AREAS WITH FINISHED CEILINGS, MOUNT 10VLC LIGHTING CONTROLLERS ABOVE CEILING IN ACCESSIBLE LOCATION, COORDINATE ACCESS HATCH LOCATIONS WITH ARCHITECTURAL DIVISIONS.
- IN AREAS WITH EXPOSED CEILINGS MOUNT 10VLC LIGHTING CONTROLLERS ON WALL, TIGHT TO UNDERSIDE OF THE SLAB.
- ELECTRICAL CONTRACTOR TO PROVIDE PERSONNEL TO ASSIST FIELD SERVICE REPRESENTATIVE IN START-UP AND PROGRAMMING OF LIGHTING CONTROL SYSTEM.
- FINAL OPERATION OF LIGHTING CONTROL SYSTEM SUBJECT TO DEPARTMENTAL REPRESENTATIVE, PROVIDE TWO (2) ADDITIONAL FIELD SERVICE VISITATIONS TO PERFORM TUNING AND ADJUSTMENTS TO SYSTEM.

DRAWING NOTES:

- WIRE GARAGE LIGHTING ZONES a AND b SO THAT SWITCH PROVIDES MANUAL ON AND OCCUPANCY SENSORS PROVIDE MANUAL OFF.
- REFER TO MILLWORK DRAWINGS FOR EXACT LENGTHS OF UNDER CABINET LIGHTING. ELECTRICAL FEED TO UNDER CABINET LIGHTS TO BE TIGHT TO UNDERSIDE OF UPPER CABINET.
- CONNECT EXTERIOR LIGHTING TO 10VLC LIGHTING CONTROLLER. PROVIDE TIME CLOCK MODULE, PHOTOCELL & DIGITAL SWITCH. EXTERIOR LIGHTS TO TURN ON WHEN PHOTOCELL REGISTERS BELOW 15 lx (ADJUSTABLE), DIM TO 50% BETWEEN 12:00AM & 6:00AM AND TURN OFF AUTOMATICALLY WHEN PHOTOCELL REGISTERS ABOVE 15 lx (ADJUSTABLE).