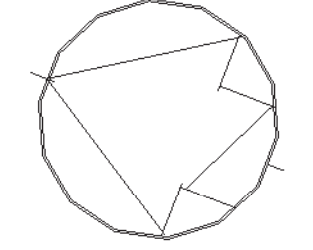


TYPICAL NOTES:
 1. ALL EXPOSED INTERIOR STEEL STRUCTURE TO BE PAINTED
 2. PB = 1200 mm X 915 mm HIGH PLYWOOD BACKING IN PARTITION FOR TV BACKING. EXACT LOCATION TO BE DETERMINED ON SITE DURING CONSTRUCTION

Public Works and Government Services Canada
 Travaux publics et Services gouvernementaux Canada

Watson MacEwen Teramura Architects

400-116 Leger Street | Ottawa Ontario | Canada K2P 0C2 | 613 232 0330



5	ISSUED FOR TENDER	17-12-20
4	100% SUBMISSION	07-10-20
3	RE-ISSUED 99% RESUBMISSION	30-06-20
2	99% SUBMISSION	17-03-20
1	66% SUBMISSION	29-03-20

#	Revision Description	Revision Date
6		
5		
4		
3		
2		
1		

Do not scale drawings. Verify all dimensions and conditions on site and immediately notify the Departmental Representative of all discrepancies.

project title
 titre du projet
COBourg ON
 COBourg CITY

COBourg SEARCH AND RESCUE STATION

drawing title
 titre du dessin
LEVEL 2 - FLOOR PLAN

drawn by
 dessiné par
 KG

designed by
 conçu par
 AT

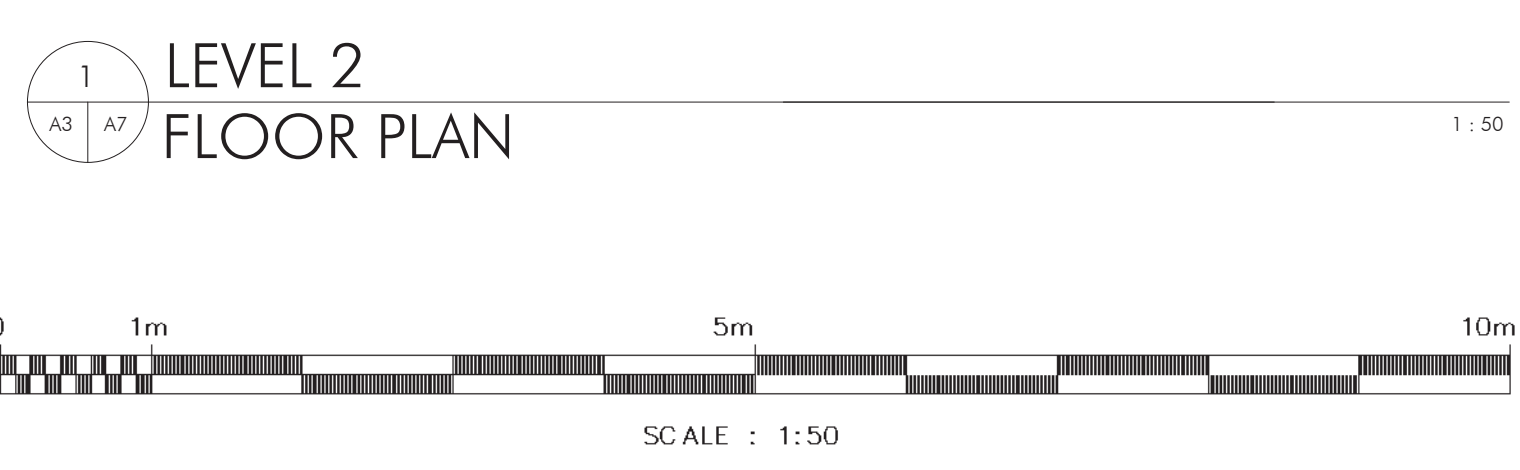
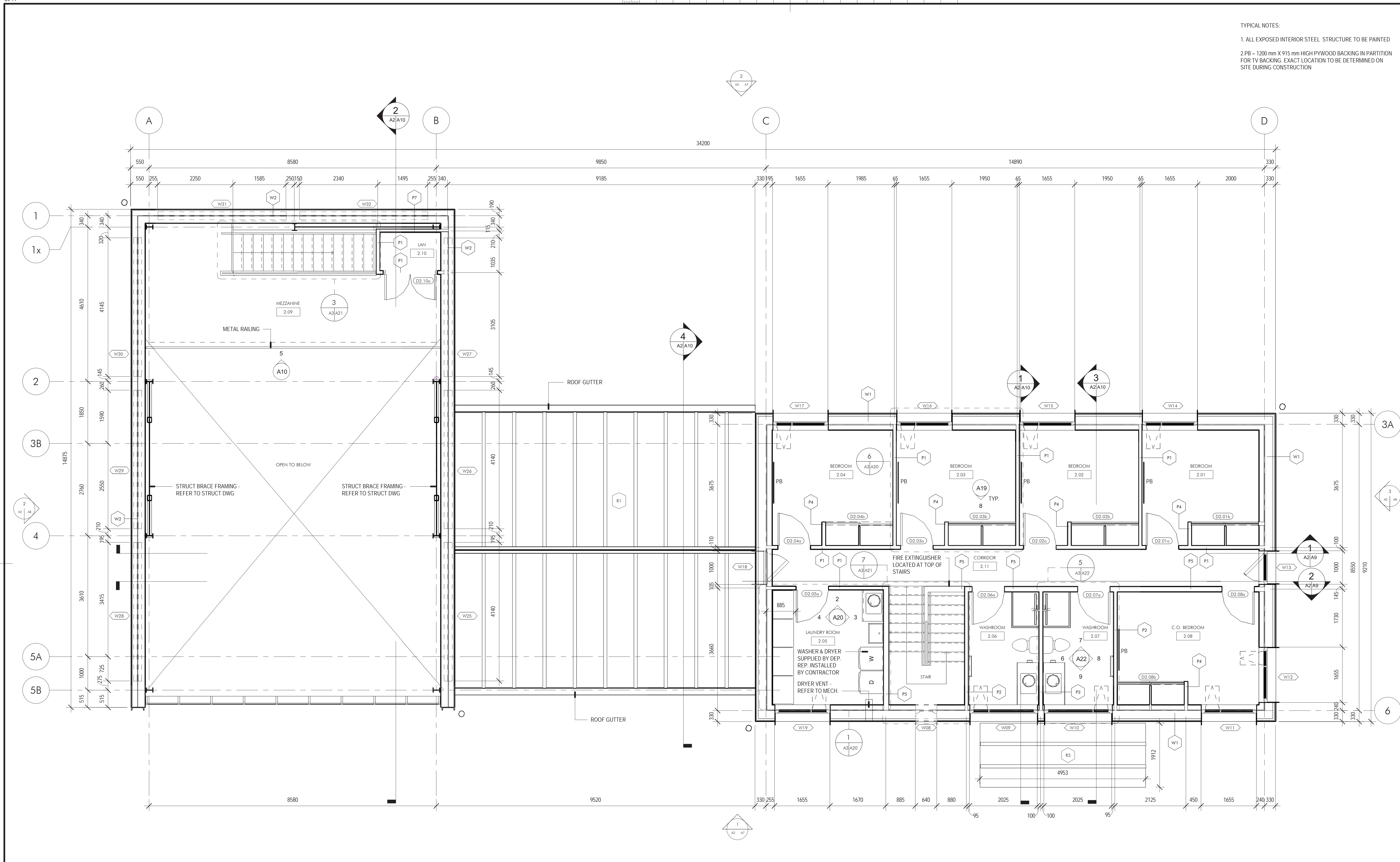
approved by
 approuvé par

bid office
 bureau de soumission
 DFO PROJECT MANAGER

project date
 date du projet
 2020-12-17

project no.
 no. du projet
 R.084112.005

drawing no.
 dessin no.
 A3



- WALL TYPES**
- W1** EXTERIOR WALL - TYPE W1
 SHIPLAP CEMENT BOARD SIDING
 19 x 89 mm WOOD STRAPPING @ 400 O.C.
 WEATHER BARRIER
 HIGH DENSITY 50 mm WOOD FIBRE INSULATION
 38 x 241 mm ENGINEERED STUD @ 400 mm c/w
 HIGH DENSITY CELLULOSE INSULATION
 19 mm OSB - AIR VAPOUR BARRIER
 140 mm WOOD STUDS @ 400 mm O.C.
 13 mm GYPSUM BOARD TYPE X
 - W2** EXTERIOR WALL - TYPE W2 (GARAGE WALL)
 SHIPLAP CEMENT BOARD SIDING
 19 x 89 mm WOOD STRAPPING @ 400 O.C.
 152 mm METAL GIRT @ 1200 mm O.C. HORIZONTALLY ON THERMALLY BROKEN ISOLATION CLIP c/w
 152 mm SEMI RIGID INSULATION
 AIR/VAPOUR BARRIER MEMBRANE
 16 mm EXTERIOR SHEATHING
 204 mm STEEL STUDS @ 400 mm O.C.
 13 mm GYPSUM BOARD TYPE X
 19 mm PLYWOOD TO EXTEND 2400 mm UP WALL - PAINTED
 - W3** EXTERIOR WALL - TYPE W3
 SHEET METAL SIDING
 19 x 89 mm WOOD STRAPPING @ 400 O.C.
 152 mm METAL GIRT @ 1200 mm O.C. HORIZONTALLY ON THERMALLY BROKEN ISOLATION CLIP c/w
 152 mm SEMI RIGID INSULATION
 AIR/VAPOUR BARRIER MEMBRANE
 16 mm EXTERIOR SHEATHING
 204 mm STEEL STUDS @ 400 mm O.C.
 13 mm GYPSUM BOARD TYPE X
- FOUNDATION WALL CONTINUOUS INSULATION TYPE 1**
 PARING ON WIRE MESH @ ALL EXPOSED RIGID INSULATION ABOVE GRADE
 300 mm RIGID INSULATION
 WATERPROOFING
 Poured CONCRETE SLAB
- FOUNDATION WALL CONTINUOUS INSULATION TYPE 2**
 PARING ON WIRE MESH @ ALL EXPOSED RIGID INSULATION ABOVE GRADE
 75 mm RIGID INSULATION
 WATERPROOFING
 Poured CONCRETE
- PARTITION TYPES**
- P1** PARTITION TYPE P1
 13 mm GYPSUM BOARD
 89 mm WOOD STUDS @ 400 mm O.C.
 c/w 89 mm ACOUSTICAL INSULATION
 13 mm GYPSUM BOARD (USE 13 mm CEMENT BOARD WHEN LOCATED IN WASHROOMS 1.02, 2.06 & 2.07)
 - P2** PARTITION TYPE P2
 13 mm GYPSUM BOARD
 89 mm WOOD STUDS @ 400 mm O.C.
 c/w 89 mm ACOUSTICAL INSULATION
 13 mm CEMENT BOARD
 6 mm PHENOLIC PANEL
 - P3** PARTITION TYPE P3
 6 mm PHENOLIC PANEL
 13 mm GYPSUM BOARD
 89 mm WOOD STUDS @ 400 mm O.C.
 c/w 89 mm ACOUSTICAL INSULATION
 13 mm CEMENT BOARD
 6 mm PHENOLIC PANEL
 - P4** PARTITION TYPE P4
 13 mm GYPSUM BOARD
 89 mm WOOD STUDS @ 400 mm O.C.
 13 mm GYPSUM BOARD
 - P5** PARTITION TYPE P5
 13 mm GYPSUM BOARD
 140 WOOD STUDS @ 400 mm O.C. c/w
 140 ACOUSTICAL INSULATION
 13 mm GYPSUM BOARD (USE 13 mm CEMENT BOARD WHEN LOCATED IN WASHROOMS 1.02, 2.06 & 2.07)
 - P6** PARTITION TYPE P6
 16 mm GYPSUM BOARD TYPE X
 204 mm STEEL STUDS @ 400 mm O.C.
 c/w 204 mm ACOUSTICAL INSULATION
 38 mm AIR SPACE
 19 mm OSB - AIR VAPOUR BARRIER
 140 mm WOOD STUDS @ 400 mm O.C.
 13 mm GYPSUM BOARD
 - P7** PARTITION TYPE P7
 19 mm PAINTED PLYWOOD
 13 mm GYPSUM BOARD
 64 mm STEEL STUDS @ 300 mm O.C.
 - P8** PARTITION TYPE 8
 13 mm GYPSUM BOARD
 92 mm STEEL STUDS @ 400 mm O.C.
 13 mm GYPSUM BOARD