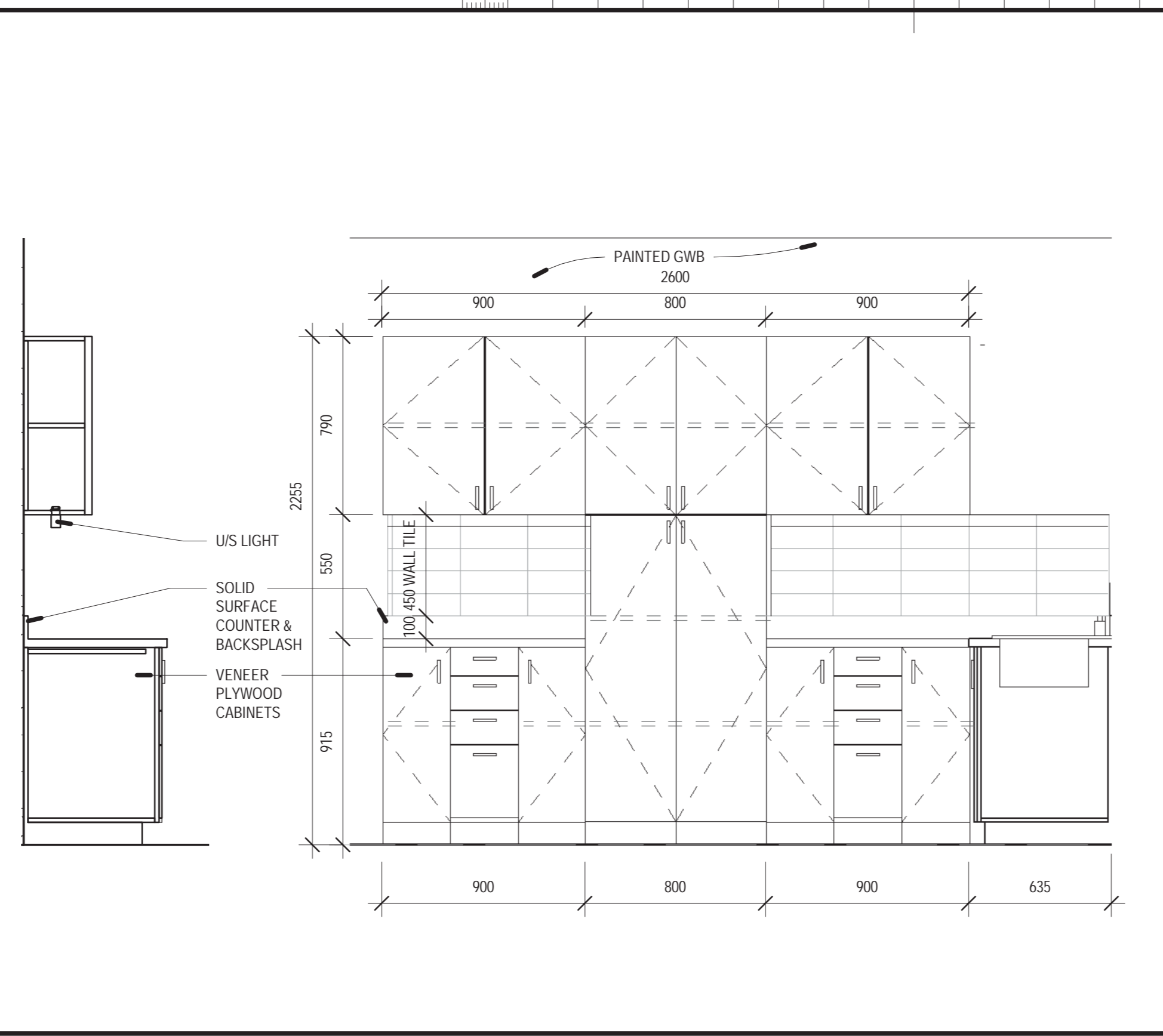
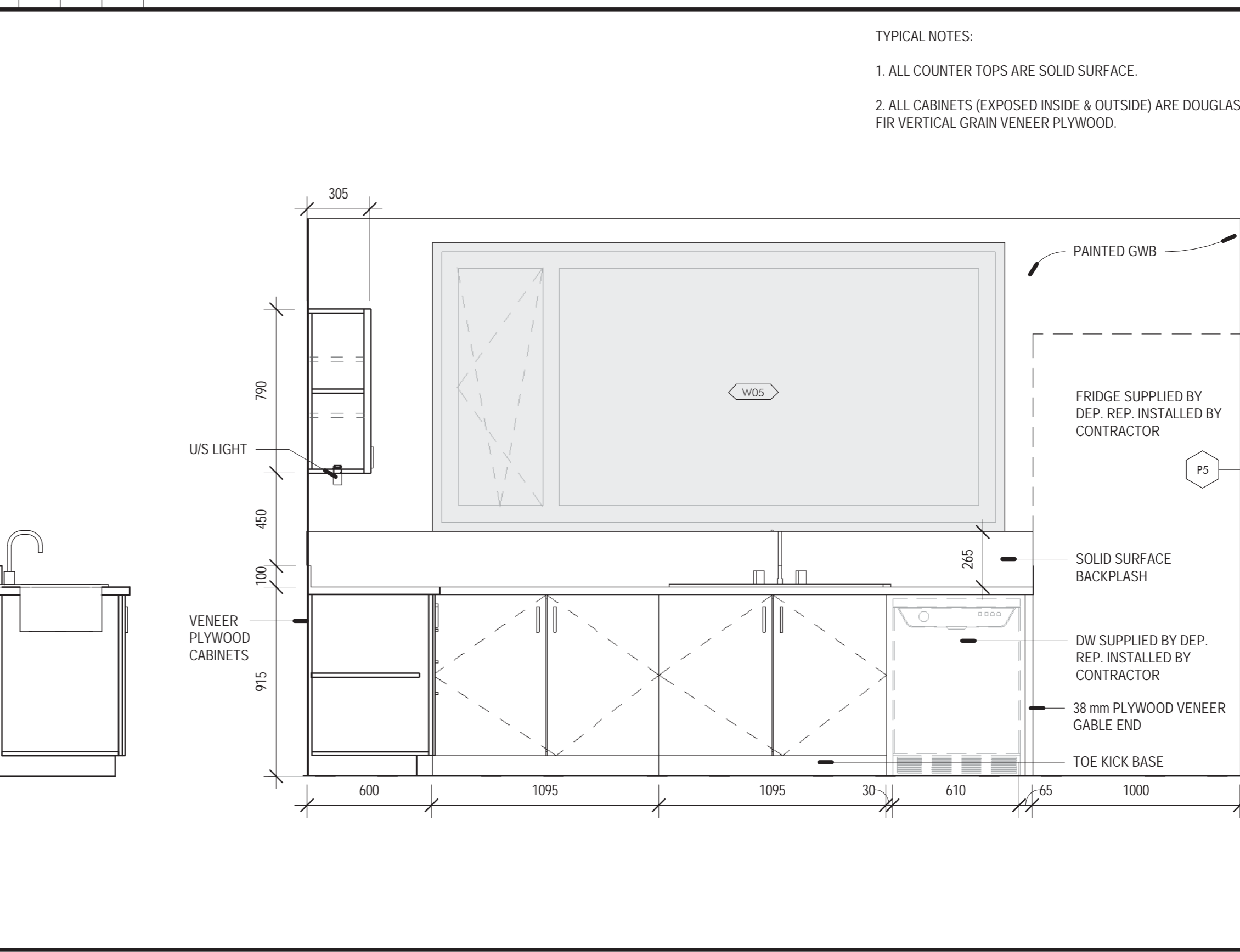


1 KITCHEN FLOOR PLAN



2 KITCHEN - ELEV 1



3 KITCHEN - ELEV 2

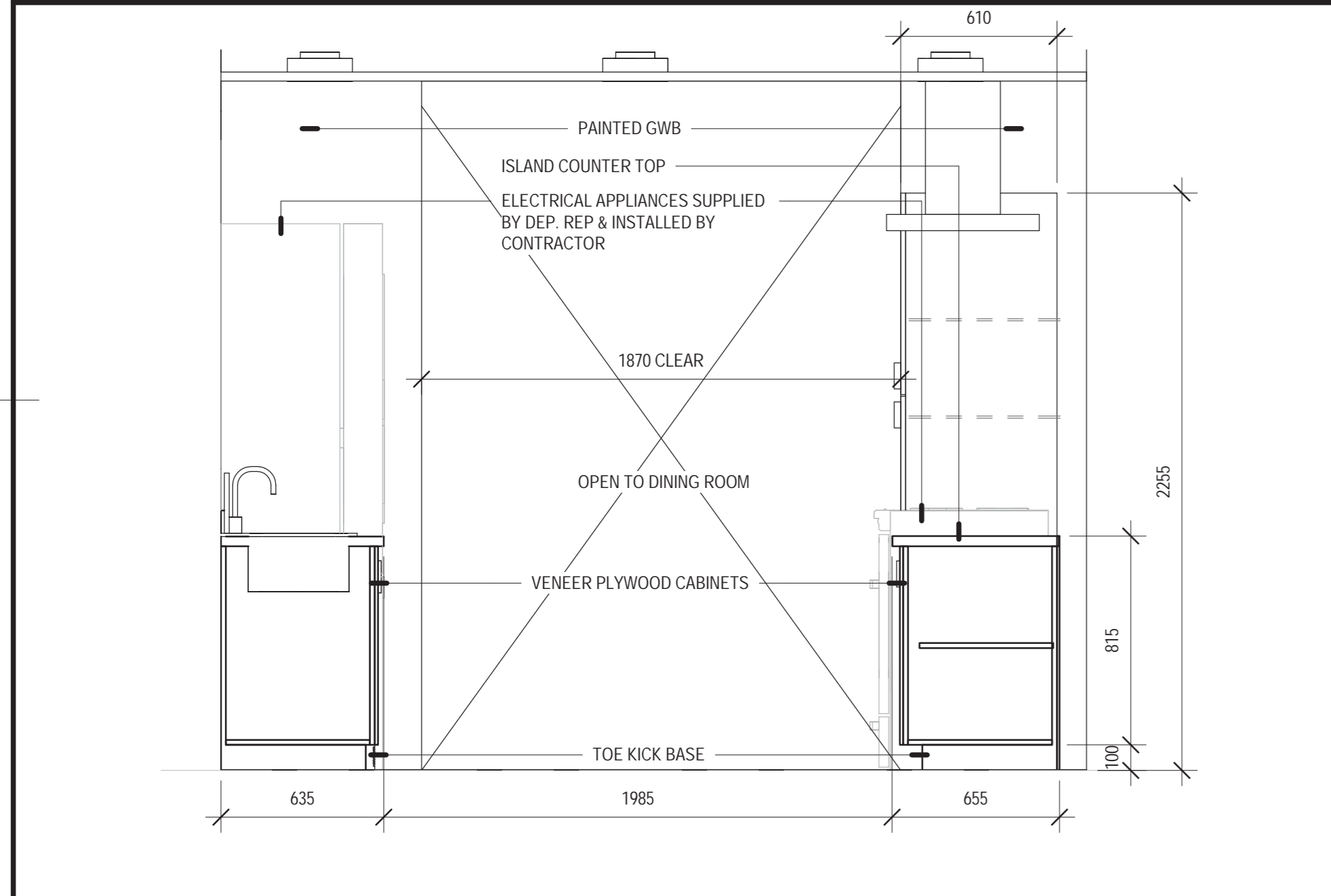
TYPICAL NOTES:

1. ALL COUNTER TOPS ARE SOLID SURFACE.
2. ALL CABINETS (EXPOSED INSIDE & OUTSIDE) ARE DOUGLAS FIR VERTICAL GRAIN VENEER PLYWOOD.

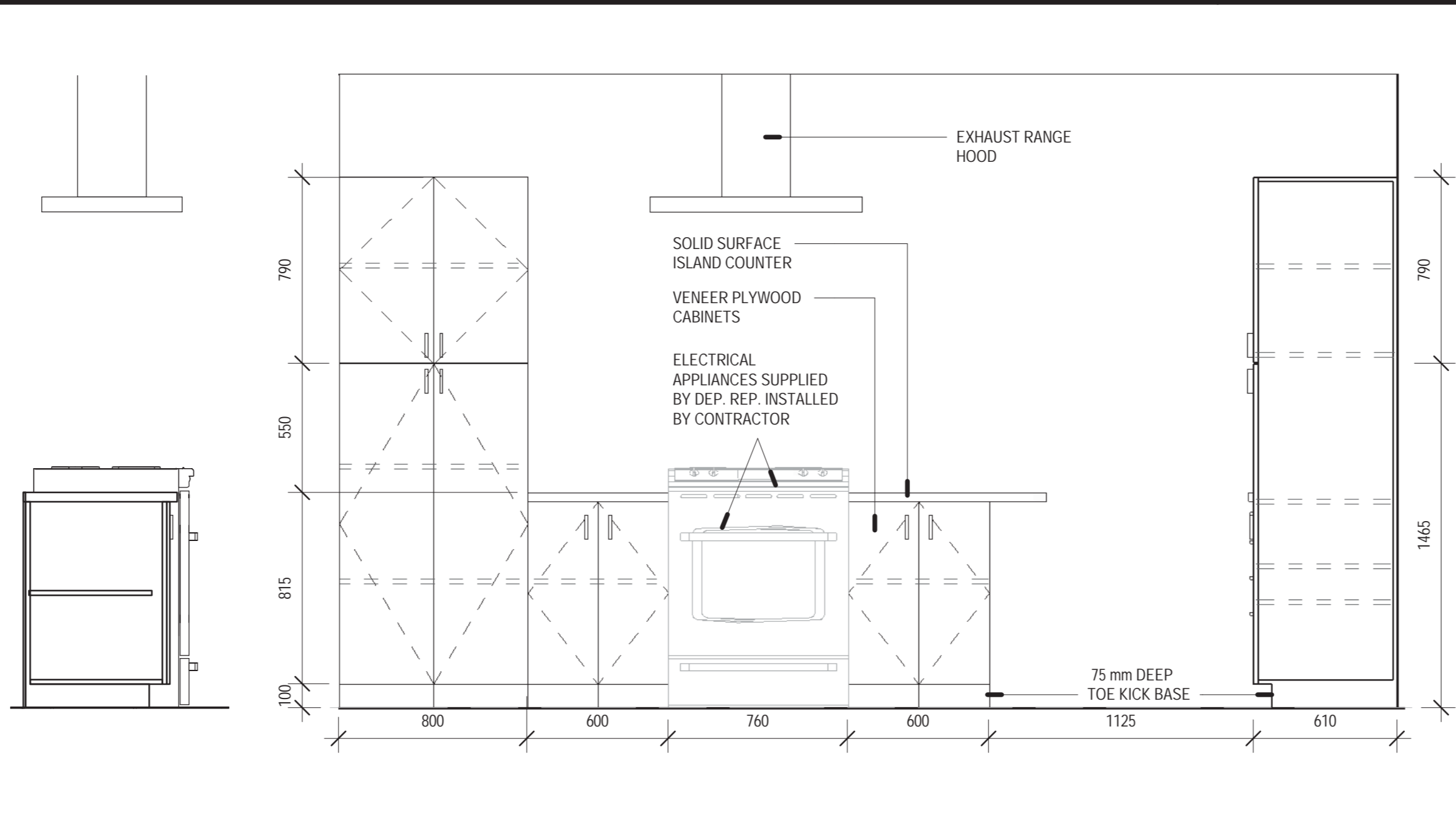
Public Works and Government Services Canada  
Travaux publics et Services gouvernementaux Canada

Watson MacEwen Teramura Architects

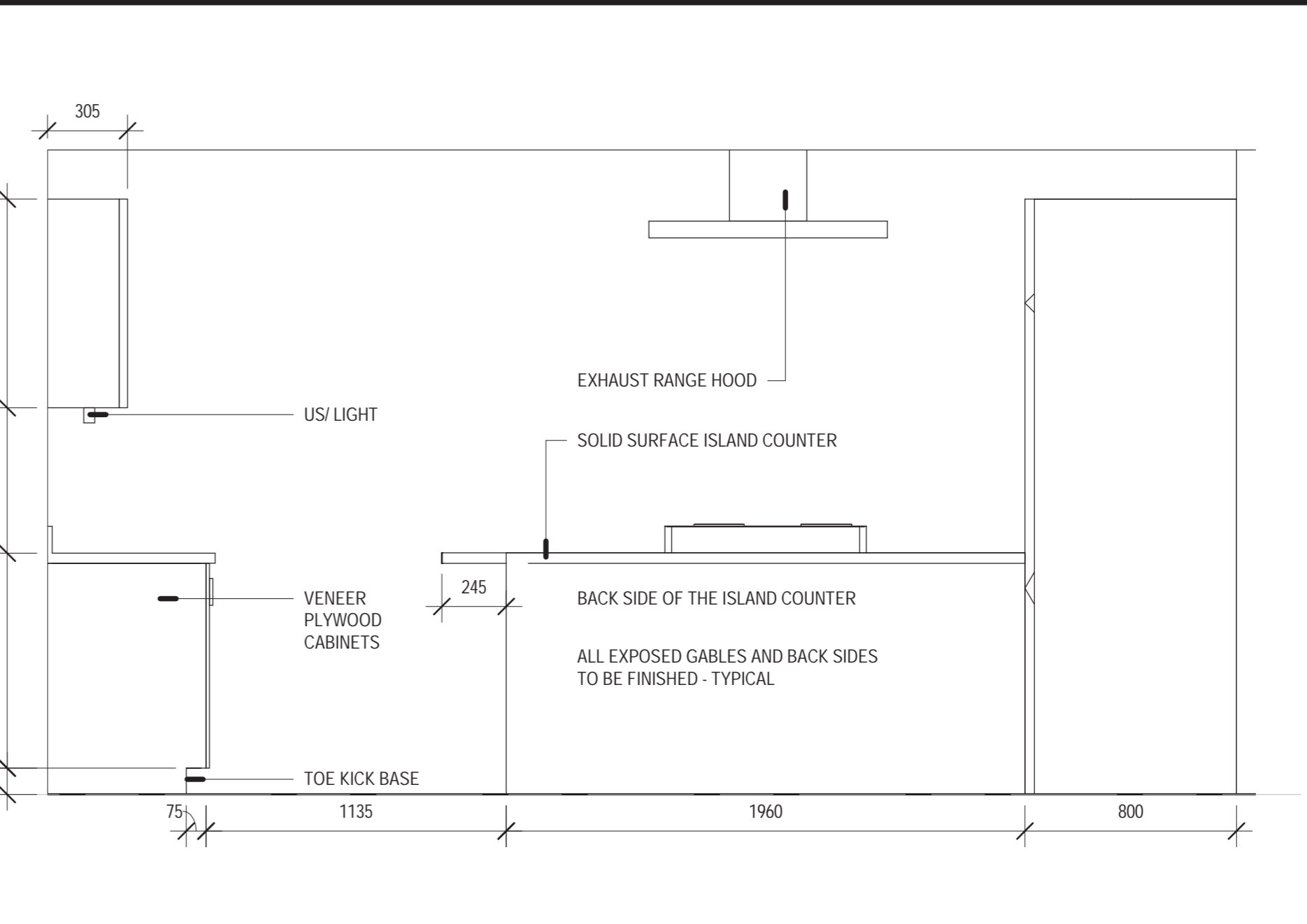
400-116 Leglar Street | Ottawa Ontario | Canada K2P 0C2 | 613 232 0330



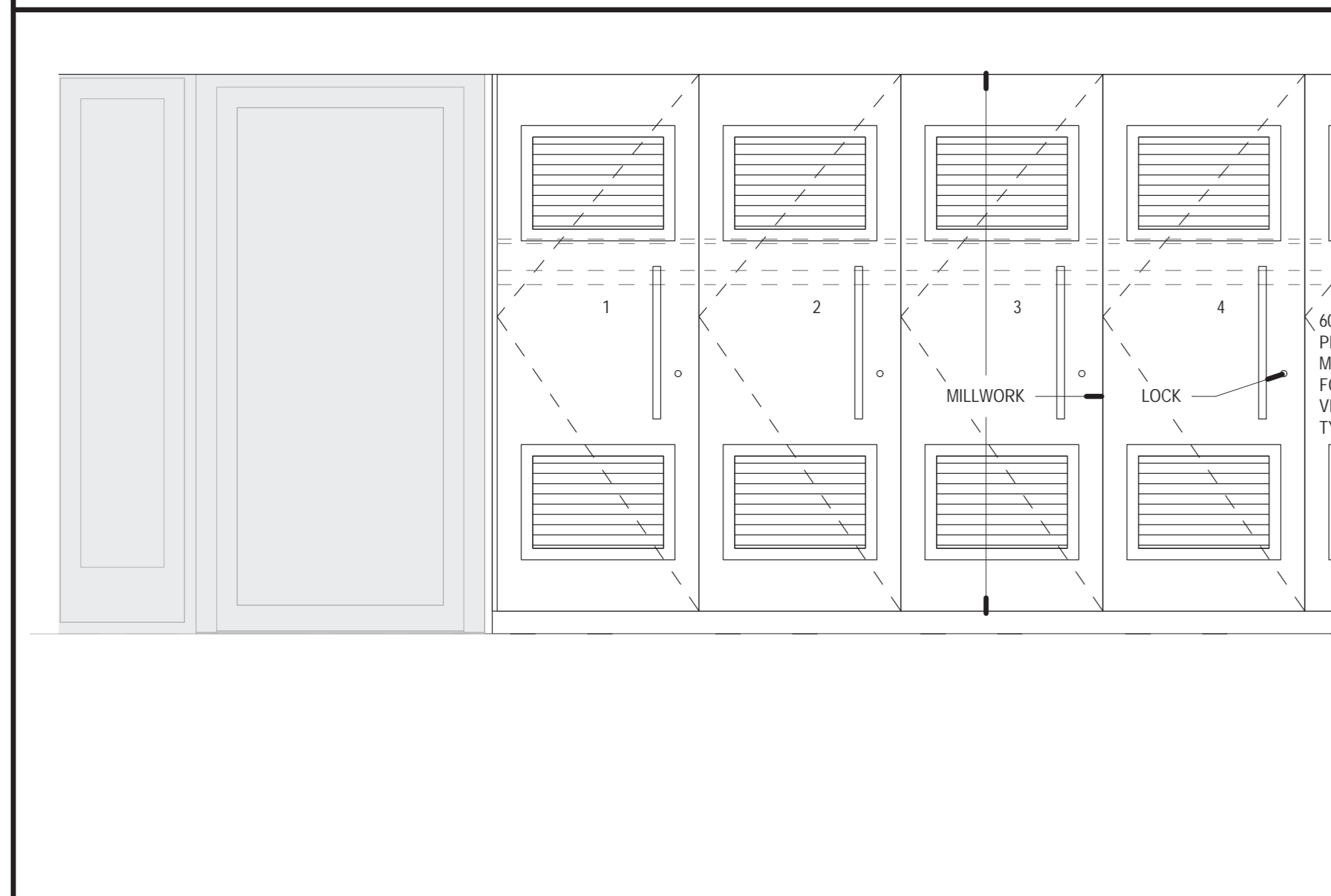
4 KITCHEN - ELEV 3



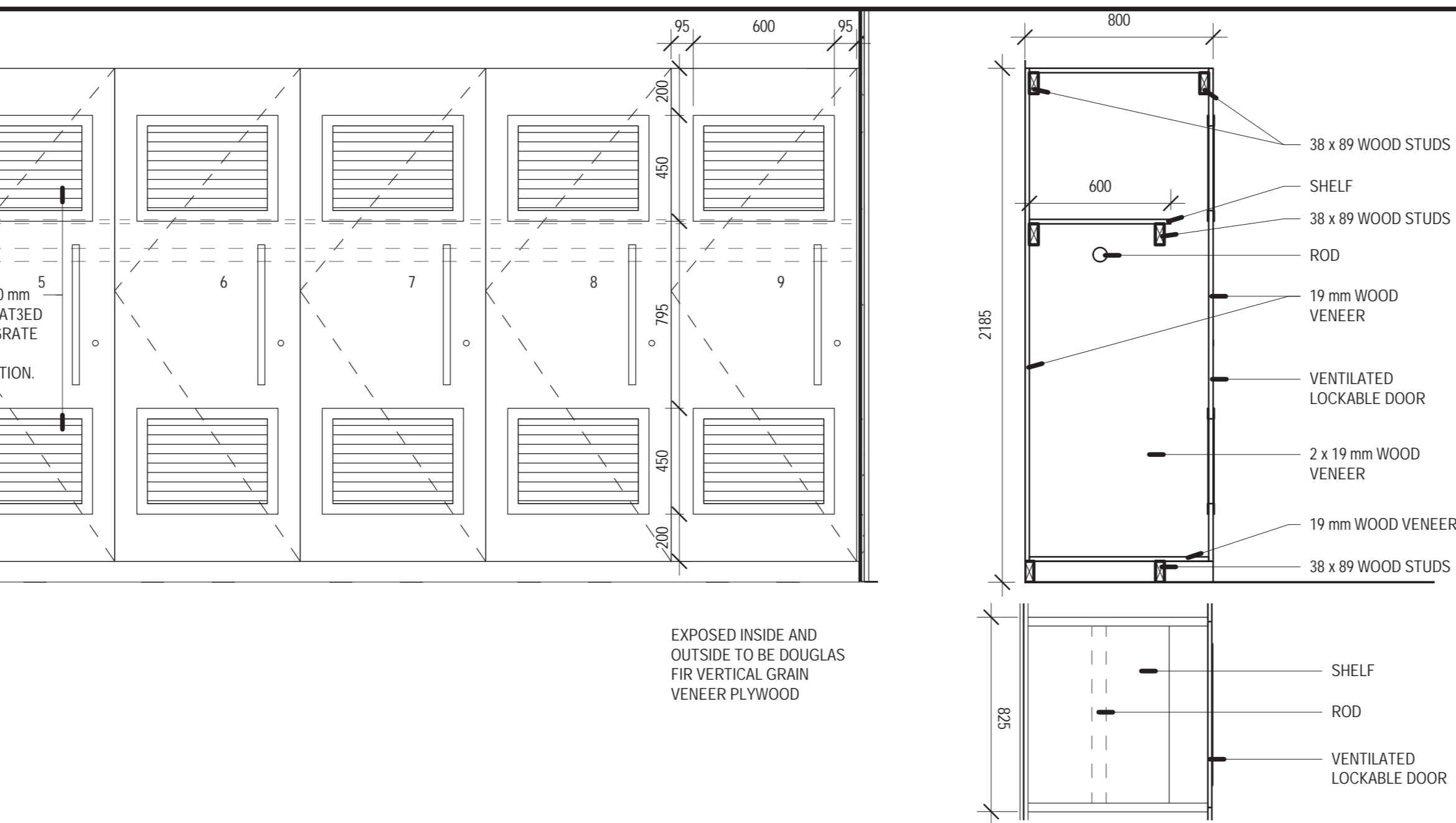
5 KITCHEN - ELEV 4



6 CORRIDOR ELEV



7 LOCKERS



8 BEDROOM CLOSET TYPICAL



5	ISSUED FOR TENDER	17-12-2020
4	100% SUBMISSION	07-10-2020
3	RE-ISSUED 99% RESUBMISSION	30-06-2020
2	99% SUBMISSION	17-03-2020
1	66% SUBMISSION	29-03-2020

#	Revision Description	Revision Date
---	----------------------	---------------

Do not scale drawings. Verify all dimensions and conditions on site and immediately notify the Departmental Representative of all discrepancies.

A	Detail No.	No. du détail
B	drawing no. - where detail required	dessin no. - ou détail exigé
C	drawing no. - where detailed	dessin no. - ou détaillé

project title  
titre du projet  
COBOURG CITY  
COBOURG SEARCH

drawing title  
titre du dessin  
MILLWORK DETAILS

drawn by  
dessiné par  
KG

designed by  
conçu par  
AT

approved by  
approuvé par

bid office  
bureau d'appel d'offres  
DFO PROJECT MANAGER

project manager  
administrateur de projets

project date  
date du projet  
2020-12-17

project no.  
no. du projet  
R.084112.005

drawing no.  
dessiné no.  
A19