

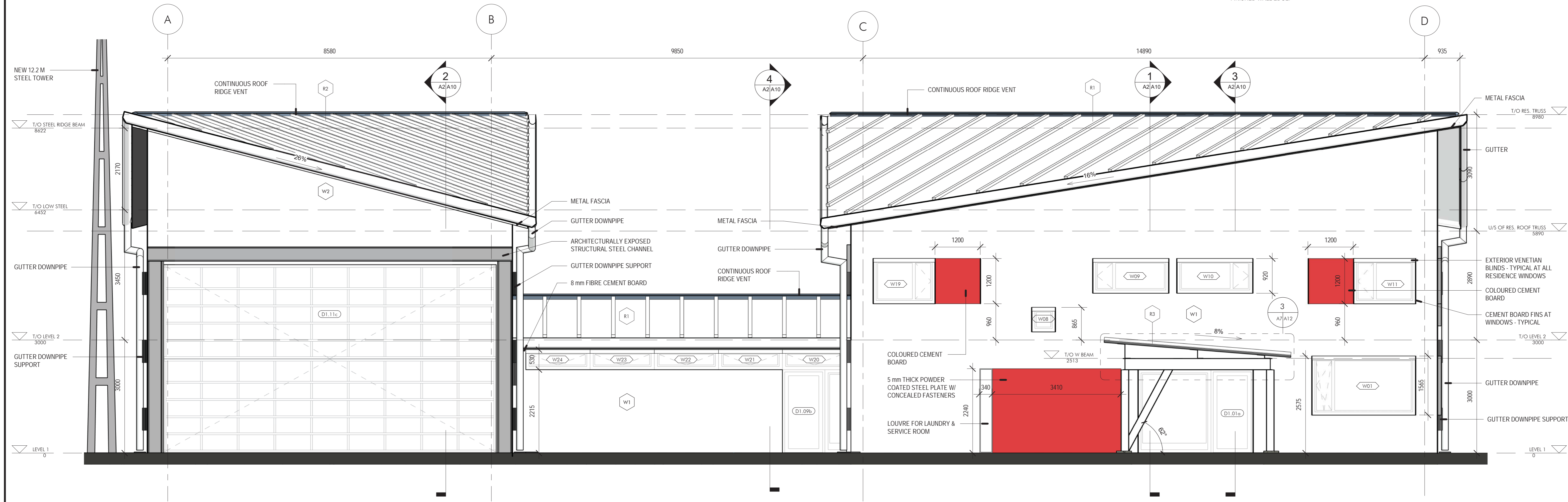
TYPICAL NOTES:

- 1. EACH WINDOW NOT ADJACENT TO A COLOURED CEMENT BOARD PANEL, TO RECEIVE CEMENT BOARD FIN ON EITHER SIDE OF WINDOW JAMB THAT EXTENDS 100mm PAST FINISHED WALL EDGE.
- 2. EACH WINDOW ADJACENT TO A COLOURED CEMENT BOARD PANEL, TO RECEIVE 3 CEMENT BOARD FIN. ONE FIN ON EITHER SIDE OF THE WINDOW JAMB AND A FIN AT THE END OF THE COLOURED CEMENT BOARD PANEL. FIN TO EXTEND 100 mm PAST FINISHED WALL EDGE.

Public Works and Government Services Canada
Travaux publics et Services gouvernementaux Canada

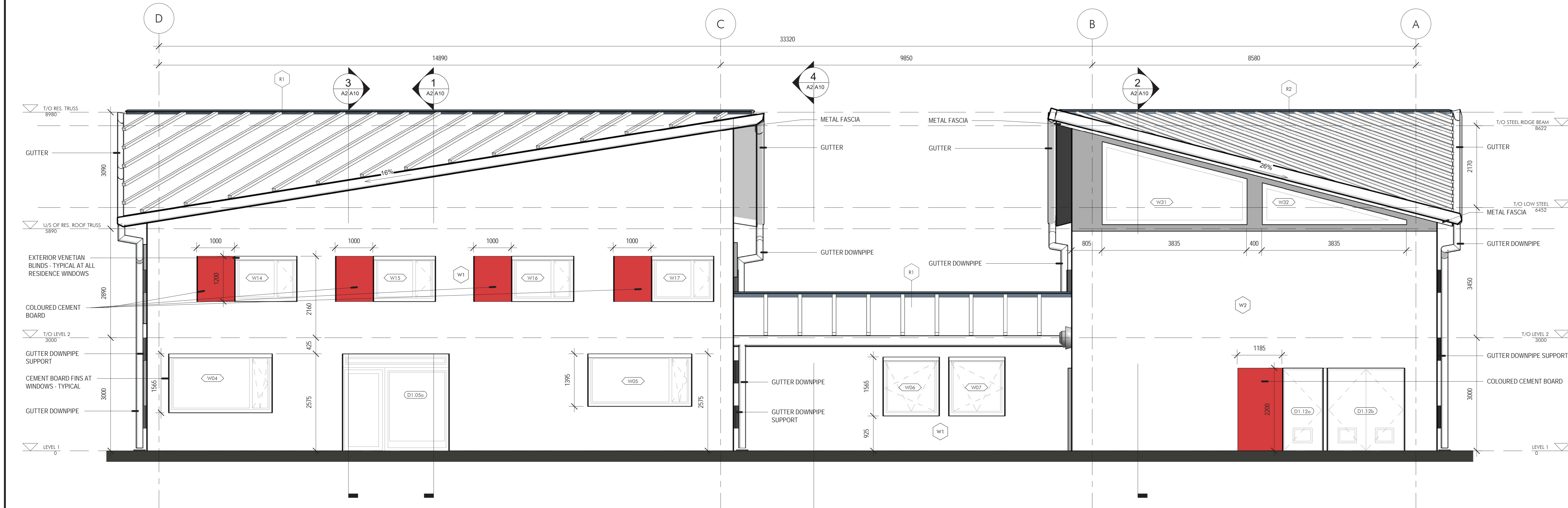
Watson MacEwen Teramura Architects

400-116 Leger Street | Ottawa Ontario | Canada K2P 0C2 | 613.232.0330



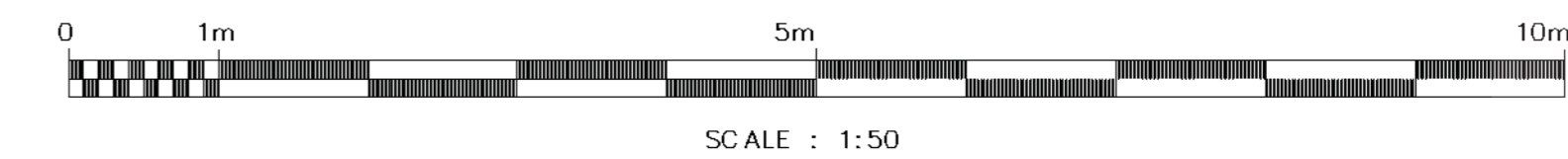
1 WEST ELEVATION

1 : 50



2 EAST ELEVATION

1 : 50



#	Revision Description	Revision Date
5	ISSUED FOR TENDER	17-12-20 20
4	100% SUBMISSION	07-10-20 20
3	RE-ISSUED 99% RESUBMISSION	30-06-20 20
2	99% SUBMISSION	17-03-20 20
1	66% SUBMISSION	29-03-20 20

#	Revision Description	Revision Date
revision	date	

Do not scale drawings. Verify all dimensions and conditions on site and immediately notify the Departmental Representative of all discrepancies.

A	B	C
Detail No.	No. du détail	
drawing no. - where detail required	dessin no. - où détail requis	
drawing no. - where detailed	dessin no. - où détaillé	

project title
titre du projet
COBOURG ON
COBOURG CITY
COBOURG SEARCH AND RESCUE STATION

drawing title
titre du dessin
BUILDING ELEVATIONS 1

drawn by
dessiné par
KG
designed by
conçue par
AT
approved by
approuvé par

bid office
bureau de soumission
DFO PROJECT MANAGER
project manager
administrateur de projets
project date
date du projet
2020-12-17
project no.
no. du projet
R.084112.005
drawing no.
dessiné no.
A7