

NORHT ARROW



No	DATE	REVISION	BY
E	2020-12-17	ISSUED FOR TENDER	C.M.S.
D	2020-10-07	ISSUED FOR 100% SUBMISSION	C.M.S.
C	2020-06-30	RE-ISSUED FOR 99% SUBMISSION	C.M.S.
B	2020-01-31	ISSUED FOR 99% REVIEW	C.M.S.
A	2019-03-29	ISSUED FOR 66% REVIEW	C.M.S.

Do not scale drawings. Verify all dimensions and conditions on site and immediately notify the Departmental Representative of all discrepancies.

A	Detail No.
B	No. du détail
C	drawing no. - where detail required dessin no. - où détail exigé
	drawing no. - where detailed dessin no. - où détaillé

project title
titre du projet

COBOURG CITY

COBOURG SEARCH AND RESCUE STATION

drawing title
titre du dessin
ELECTRICAL POWER & SYSTEMS SECOND FLOOR LAYOUT

drawn by
dessiné par
T. CLARK

designed by
conçu par
C. SITKOWSKI

approved by
approuvé par
M. MOORE

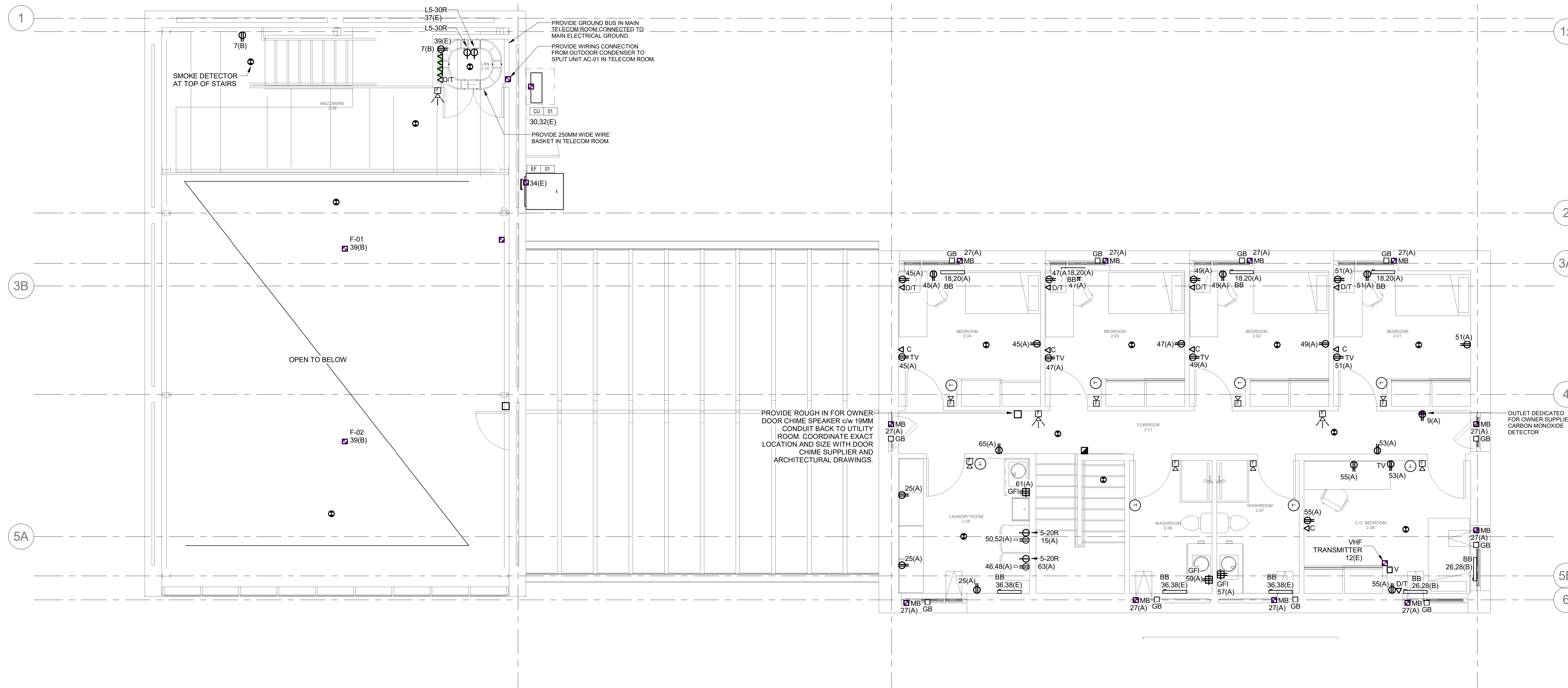
bid offe
ELISABETH OHI

project manager
administrateur de projets

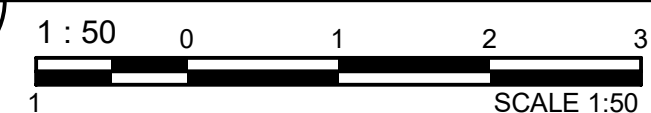
project date
date du projet
20-03-2019

project no.
no. du projet
R.084112.005

drawing no.
dessiné no.
E301



1 SECOND FLOOR - POWER LAYOUT



GENERAL NOTES:

- A. ELECTRICAL DRAWINGS DO NOT INDICATE ALL CONDUITS, PULL BOXES, JUNCTION BOXES AND OTHER MATERIALS. DIVISION 26 SHALL PROVIDE ALL REQUIRED CONDUIT, PULL BOXES, JUNCTION BOXES AND OTHER MATERIALS IN ACCORDANCE WITH SPECIFICATIONS AND APPLICABLE CODES.
- B. DIVISION 26 SHALL PROVIDE THE SECURITY SYSTEM PATHWAY AND CONDUIT INFRASTRUCTURE IN COORDINATION WITH THE REQUIREMENTS OF THE DEPARTMENTAL REPRESENTATIVE. COORDINATE EXACT LOCATION OF DEVICES AS DIMENSIONED PER ARCHITECTURAL DRAWINGS AND IN ACCORDANCE WITH THE SECURITY SYSTEM DESIGN REQUIREMENTS.
- C. DIVISION 26 SHALL PROVIDE THE SECURITY SYSTEM PATHWAY AND CONDUIT INFRASTRUCTURE SUCH THAT ALL SECURITY CONDUITS ARE ROUTED TO THE UTILITY ROOM OR AS INDICATED ON DRAWINGS.
- D. DIVISION 26 SHALL PROVIDE THE COMMUNICATION PATHWAY AND CONDUIT INFRASTRUCTURE IN COORDINATION WITH THE REQUIREMENTS OF THE DEPARTMENTAL REPRESENTATIVE. COORDINATE EXACT LOCATION OF DEVICES AS DIMENSIONED PER ARCHITECTURAL DRAWINGS AND IN ACCORDANCE WITH THE COMMUNICATION DESIGN REQUIREMENTS.
- E. DIVISION 26 SHALL PROVIDE THE COMMUNICATION PATHWAY AND CONDUIT INFRASTRUCTURE SUCH THAT ALL TELECOM OUTLETS ROUTE TO THE TELECOM ROOM AT THE MECHANICAL MEZZANINE. PROVIDE MINIMUM 53MM EMT DIAMETER CONDUIT WHERE CONDUITS FOR INDEPENDENT DROPS ARE GROUPED.
- F. MINIMUM CONDUIT SIZE FOR TELECOMMUNICATION PATHWAYS SHALL BE 27MM DIAMETER EMT CONDUIT UNLESS OTHERWISE INDICATED.
- G. ALL DEVICE BOXES AND OUTLET BOXES ASSOCIATED WITH WIRING DEVICES SHALL BE RECESS MOUNTED IN WALL. PROVIDE SURFACE MOUNTED DEVICES IN ELECTRICAL AND MECHANICAL SERVICE SPACES AND GARAGE AREA.
- H. PROVIDE CONCEALED INSTALLATION OF CONDUIT, EQUIPMENT AND DEVICES IN ALL SPACES UNLESS OTHERWISE INDICATED.
- I. ALL OUTLETS, DISCONNECTS, JUNCTION / PULL BOXES AND DEVICES SHALL BE PROVIDED WITH A P-TOUCH LABEL IDENTIFYING SOURCE PANEL AND CIRCUIT NUMBER. REFER TO ELECTRICAL DETAILS.
- J. PROVIDE PULL STRINGS IN ALL EMPTY RACEWAYS FOR ALL BUILDING SYSTEMS.
- K. PROVIDED DEDICATED NEUTRAL FOR ALL BRANCH CIRCUITING THROUGHOUT. SHARED NEUTRALS SHALL NOT BE ACCEPTED.
- L. PROVIDE ARC FAULT INTERRUPT PROTECTION FOR ALL RECEPTACLES NOT INDICATED WITH GFI PROTECTION. DO NOT PROVIDE ARC FAULT PROTECTION FOR CIRCUITS SERVICED FROM PANELBOARD 'B'. PROVIDE THIS PROTECTION AT THE BREAKER SERVICING THE RECEPTACLES NOT REQUIRING GFI PROTECTION.
- M. PROVIDE LINE VOLTAGE WIRING BACK TO THERMOSTAT AS INDICATED ON PLANS. BASEBOARD HEATERS IN AN ENCLOSED SPACE SHALL BE WIRED TO THE LOCAL ROOM THERMOSTAT UNLESS OTHERWISE INDICATED.