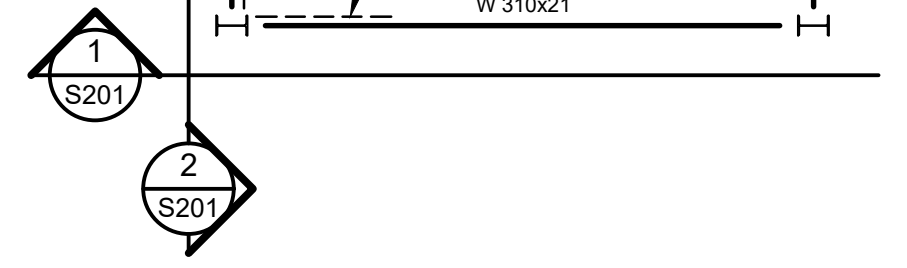
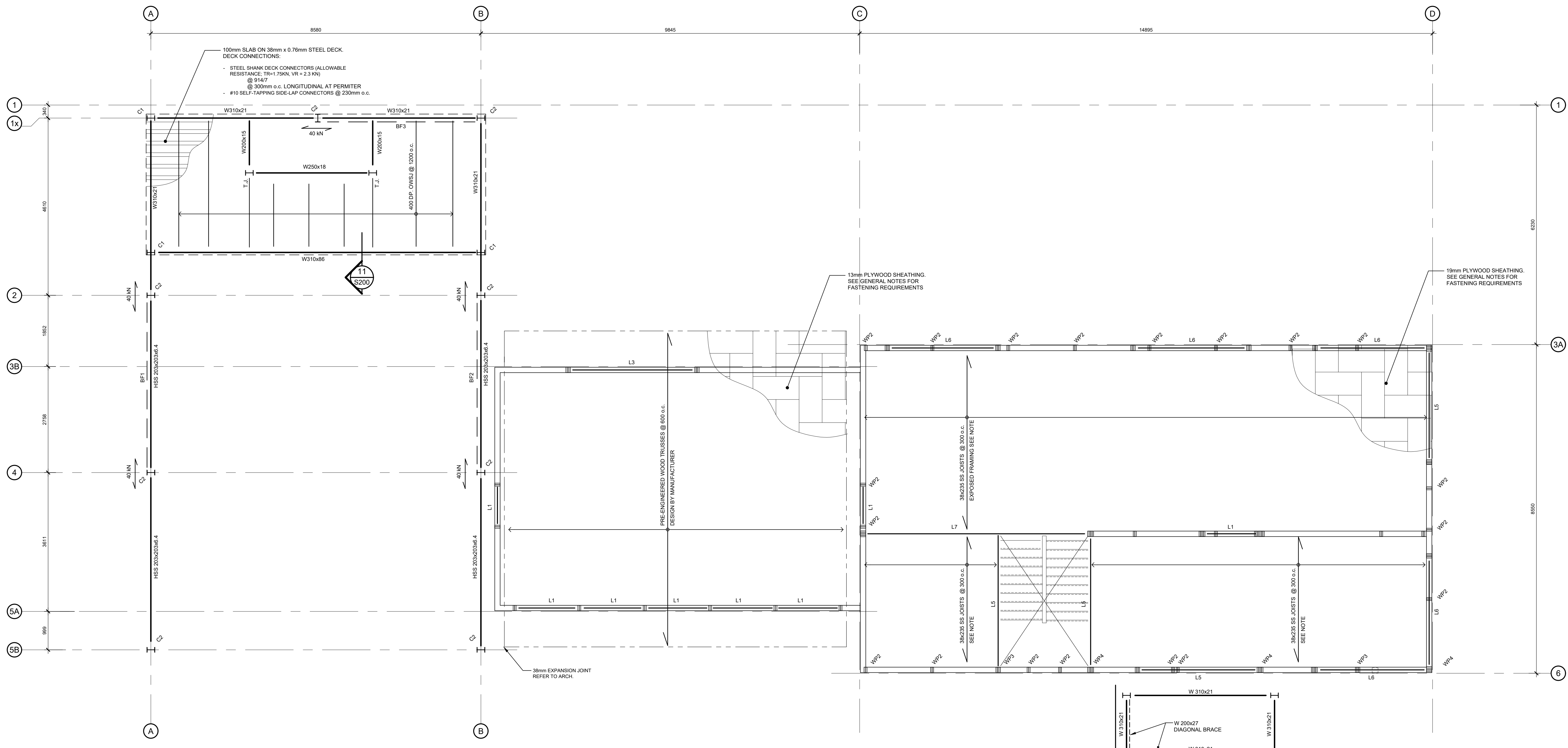


- NOTES:
- DESIGN COLLECTOR BEAM CONNECTION FOR ADDITIONAL FORCES SHOWN ON PLAN EACH END OF BEAM (TYP.)
  - FOR TOP OF STEEL ELEVATION, REFER TO ARCHITECTURAL.
  - SLAB ON COMPOSITE DECK TO BE 100mm THK (TOTAL) GW 152x152 MW 18 x 18.7 WIRE MESH. SEE NOTES FOR FASTENING REQUIREMENTS AND DECK TYP.
  - COLLECTOR FORCES SHOWN ON PLAN ARE EARTHQUAKE FORCES AND ARE MAGNIFIED (MULTIPLIED BY R<sub>d</sub>=1.5).
  - DEPTH OF DIML SHOE IS 100mm
  - JOIST DEFLECTION TO BE L/960 SNOW MAX. OR 1" MAX. WHICH EVER GOVERNS.
  - PROVIDE L102x102x6.4 CONTINUOUS TRIMMER ALL AROUND PERIMETER TO SUPPORT DECK EDGE (TYP.)
  - ALL HSS MEMBERS TO COME WITH CAP PLATES.
  - CONTRACTOR TO COORDINATE AND CONFIRM DIMENSIONS PRIOR TO ANY FABRICATION OF STEEL.
  - REFER TO GENERAL NOTES FOR ADDITIONAL FRAMING FOR OPENINGS AND MECHANICAL UNITS. VERIFY MECHANICAL UNITS LOCATIONS AND WEIGHTS WITH SUPPLIER.
  - ALL FIRE RATED SPRAYED STEEL SHALL NOT BE GIVEN PRIMER OR ANY PAINT.
  - DESIGN ALL BEAM CONNECTIONS FOR THE LOADS INDICATED ON PLANS. CONNECTIONS MUST BE DESIGNED FOR A MINIMUM FACTORED SHEAR FORCE OF 50% OF THE BEAM UNIFORM LOAD CAPACITY WITH A MINIMUM OF 2 BOLTS PER CONNECTION.
  - T.J. DENOTES THE JOISTS. THE JOIST CONNECTIONS SHALL BE DESIGNED FOR A FACTORED AXIAL LOAD OF 2% OF TRUSS CHORD FACTORED LOAD, OR A MINIMUM OF 25kN.

WOOD BEAM/LINTEL SCHEDULE		
MARK	SIZE	REMARKS
L1	2-38x235	
L2	3-38x235	
L3	3-38x286	
L4	2-PLY LVL 235mm	
L5	2-PLY LVL 302mm	
L6	3-PLY LVL 302mm	
L7	3-PLY LVL 406mm	

NOTES:

- PROVIDE MIN. TRIPLE BUILT-UP STUDS TO MATCH WALL THICKNESS EACH SIDE OF OPENINGS UN OTHERWISE.
- LINTELS SHOWN ARE FOR OPENINGS BELOW CURRENT LEVEL.
- SPAN NOTED INDICATES CLEAR SIZE OF OPENING. ADD'L LENGTH TO BE PROVIDED TO ALL LINTELS TO SUIT BEARING REQUIREMENTS.
- ALL LINTELS TO BE PROVIDED WITH MINIMUM 38mm (1 1/2") BEARING E.E. UN IN SCHEDULE.
- SHEATHING TO BE FASTENED TO LINTELS WITH AT LEAST 2 RUNS OF FASTENERS TO THE EXTERIOR FACE OF THE LINTEL AND AT LEAST A SINGLE ROW TO THE TOP PLATES AND STUDS. FASTENERS TO CONFORM TO TABLE 9.23.3.5 OF 2012 OBC.
- PROVIDE PLYWOOD BETWEEN PLIES OF LINTEL AS REQUIRED TO FUR LINTEL TO FULL WIDTH OF WALL STUDS.
- LINTELS TO BE FASTENED TOGETHER AS FOLLOWS:  
64mm(2 1/2")x25mm(1 1/4") @ NAILS @ 450 (18") o.c. TOP AND BOTTOM + ADD'L PAIR @ 100mm (4") FROM ENDS.
- THIS LINTEL SCHEDULE IS ONLY APPLICABLE TO THOSE OPENINGS THAT ALIGNED WITH OPENINGS ABOVE AND BELOW. WHERE OPENINGS DO NOT ALIGN, REFER TO PLANS FOR WOOD BEAM NOTATION.
- ALL LINTELS TO BE TOP LOADED UN OTHERWISE.



revision	description	date
05	ISSUED FOR TENDER	17 DEC 2020
04	ISSUED FOR 100% COORDINATION	07 OCT 2020
03	RE-ISSUED FOR 99% COORDINATION	30 JUNE 2020
02	ISSUED FOR 99% COORDINATION	30 January 2020
01	ISSUED FOR 66% COORDINATION	28 March 2019

Do not scale drawings. Verify all dimensions and conditions on site and immediately notify the Departmental Representative of all discrepancies.

Detail No.	Description
A	Detail No.
B	drawing no. - where detail required
C	drawing no. - ou detail exage
	drawing no. - where detailed
	dessin no. - ou detaillé

project title  
titre du projet  
**COBOURG** ON

**COBOURG CITY**

**COBOURG SEARCH AND RESCUE STATION**

drawing title  
titre du dessin  
**LEVEL 2 FLOOR PLAN**

drawn by  
dessiné par  
WL

designed by  
conçu par  
JV

approved by  
approuvé par  
JV

bid  
offre  
DFO PROJECT MANAGER

project manager  
administrateur de projets

project date  
date du projet  
05-03-2019

project no.  
no. du projet  
R.084112.005

drawing no.  
dessiné no.  
S101