

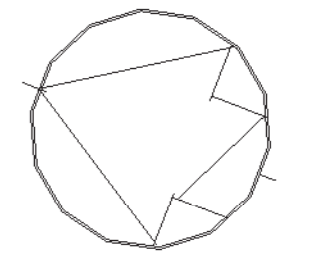
TYPICAL NOTES:

1. ALL EXPOSED INTERIOR STEEL STRUCTURE TO BE PAINTED
2. PB - 1200 mm X 915 mm HIGH PLYWOOD BACKING IN PARTITION FOR TV BACKING. EXACT LOCATION TO BE DETERMINED ON SITE DURING CONSTRUCTION
3. PLYWOOD BACKING TO EXTEND THE COMPLETE PS PARTITION

Public Works and Government Services Canada
Travaux publics et Services gouvernementaux Canada

Watson MacEwen Teramura Architects

400-116 Leger Street | Ottawa Ontario | Canada K2P 0C2 | 613.232.0330



#	Revision Description	Revision Date
5	ISSUED FOR TENDER	17-12-20 20
4	100% SUBMISSION	07-10-20 20
3	RE-ISSUED 99% RESUBMISSION	30-06-20 20
2	99% SUBMISSION	17-03-20 20
1	66% SUBMISSION	29-03-20 20

#	Revision Description	Revision Date
revision		date

Do not scale drawings. Verify all dimensions and conditions on site and immediately notify the Departmental Representative of all discrepancies.

A	B	C
Detail No.	No. du détail	
drawing no. - where detail required	dessin no. - ou détail requis	
drawing no. - where detailed	dessin no. - ou détaillé	

project title
titre du projet
COBOURG ON
COBOURG CITY

COBOURG SEARCH AND RESCUE STATION

drawing title
titre du dessin
LEVEL 1 - FLOOR PLAN

drawn by
dessiné par
KG

designed by
conçu par
AT

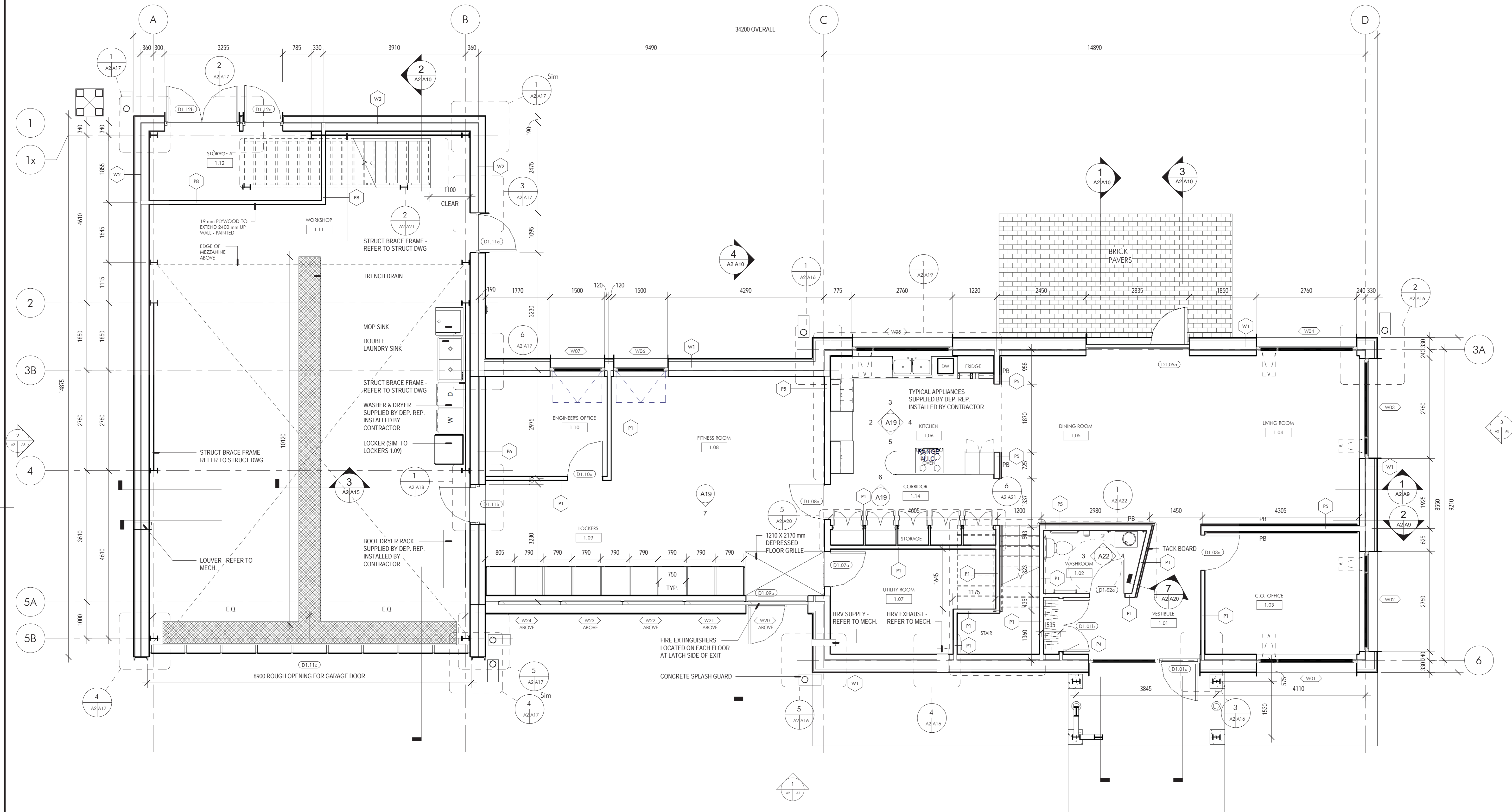
approved by
approuvé par

bid office
bureau de soumission
DFO PROJECT MANAGER

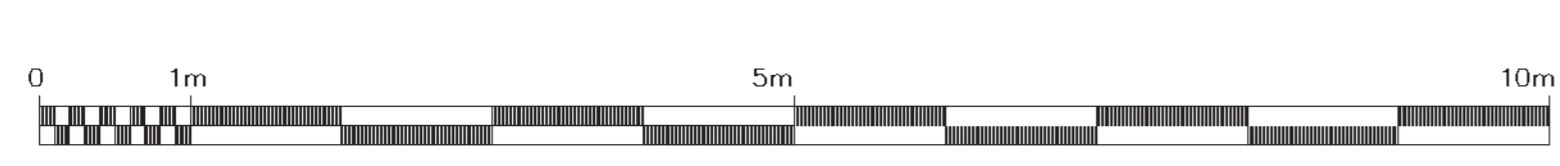
project date
date du projet
2020-12-17

project no.
no. du projet
R.084112.005

drawing no.
dessiné no.
A2



LEVEL 1 FLOOR PLAN
SCALE: 1:50



- WALL TYPES**
- W1** EXTERIOR WALL - TYPE W1
SHIPLAP CEMENT BOARD SIDING
19 x 89 mm WOOD STRAPPING @ 400 O.C.
WEATHER BARRIER
HIGH DENSITY 50 mm WOOD FIBRE INSULATION
38 x 241 mm ENGINEERED STUD @ 400 mm c/w
HIGH DENSITY CELLULOSE INSULATION
19 mm OSB - AIR / VAPOUR BARRIER
140 mm WOOD STUDS @ 400 mm O.C.
13 mm GYPSUM BOARD TYPE X
 - W2** EXTERIOR WALL - TYPE W2 (GARAGE WALL)
SHIPLAP CEMENT BOARD SIDING
19 x 89 mm WOOD STRAPPING @ 400 O.C.
152 mm METAL GIRT @ 1200 mm O.C. HORIZONTALLY ON THERMALLY BROKEN ISOLATION CLIP c/w
152 mm SEM RIGID INSULATION
AIR/ VAPOUR BARRIER MEMBRANE
16 mm EXTERIOR SHEATHING
204 mm STEEL STUDS @ 400 mm O.C.
13 mm GYPSUM BOARD TYPE X
19 mm PLYWOOD TO EXTEND 2400 mm UP WALL - PAINTED
 - W3** EXTERIOR WALL - TYPE W3
SHEET METAL SIDING
19 x 89 mm WOOD STRAPPING @ 400 O.C.
152 mm METAL GIRT @ 1200 mm O.C. HORIZONTALLY ON THERMALLY BROKEN ISOLATION CLIP c/w
152 mm SEM RIGID INSULATION
AIR/ VAPOUR BARRIER MEMBRANE
16 mm EXTERIOR SHEATHING
204 mm STEEL STUDS @ 400 mm O.C.
13 mm GYPSUM BOARD TYPE X

- FOUNDATION WALL CONTINUOUS INSULATION TYPE 1**
PARING ON WIRE MESH @ ALL EXPOSED RIGID INSULATION ABOVE GRADE
300 mm RIGID INSULATION
WATERPROOFING
POURED CONCRETE SLAB
- FOUNDATION WALL CONTINUOUS INSULATION TYPE 2**
PARING ON WIRE MESH @ ALL EXPOSED RIGID INSULATION ABOVE GRADE
75 mm RIGID INSULATION
WATERPROOFING
POURED CONCRETE

- PARTITION TYPES**
- P1** PARTITION TYPE P1
13 mm GYPSUM BOARD
89 mm WOOD STUDS @ 400 mm O.C.
c/w 89 mm ACOUSTICAL INSULATION
13 mm CEMENT BOARD (USE 13 mm CEMENT BOARD WHEN LOCATED IN WASHROOMS 1.02, 2.06 & 2.07)
 - P2** PARTITION TYPE P2
13 mm GYPSUM BOARD
89 mm WOOD STUDS @ 400 mm O.C.
c/w 89 mm ACOUSTICAL INSULATION
13 mm CEMENT BOARD
6 mm PHENOLIC PANEL
 - P3** PARTITION TYPE P3
6 mm PHENOLIC PANEL
13 mm CEMENT BOARD
89 mm WOOD STUDS @ 400 mm O.C.
c/w 89 mm ACOUSTICAL INSULATION
13 mm CEMENT BOARD
6 mm PHENOLIC PANEL
 - P4** PARTITION TYPE P4
13 mm GYPSUM BOARD
89 mm WOOD STUDS @ 400 mm O.C.
13 mm GYPSUM BOARD

- P5** PARTITION TYPE P5
13 mm GYPSUM BOARD
140 WOOD STUDS @ 400 mm O.C. c/w
140 ACOUSTICAL INSULATION
13 mm GYPSUM BOARD (USE 13 mm CEMENT BOARD WHEN LOCATED IN WASHROOMS 1.02, 2.06 & 2.07)
- P6** PARTITION TYPE P6
16 mm GYPSUM BOARD TYPE X
204 mm STEEL STUDS @ 400 mm O.C.
c/w 204 mm ACOUSTICAL INSULATION
38 mm AIR SPACE
19 mm OSB - AIR VAPOUR BARRIER
140 mm WOOD STUDS @ 400 mm O.C.
13 mm GYPSUM BOARD
- P7** PARTITION TYPE P7
19 mm PAINTED PLYWOOD
13 mm GYPSUM BOARD
64 mm STEEL STUDS @ 300 mm O.C.
- P8** PARTITION TYPE 8
13 mm GYPSUM BOARD
92 mm STEEL STUDS @ 400 mm O.C.
13 mm GYPSUM BOARD