

NORHT ARROW



No	DATE	REVISION	BY
E	2020-12-17	ISSUED FOR TENDER	C.M.S.
D	2020-10-07	ISSUED FOR 100% SUBMISSION	C.M.S.
C	2020-06-30	RE-ISSUED FOR 99% SUBMISSION	C.M.S.
B	2020-01-31	ISSUED FOR 99% REVIEW	C.M.S.
A	2019-03-29	ISSUED FOR 66% REVIEW	C.M.S.

Do not scale drawings. Verify all dimensions and conditions on site and immediately notify the Departmental Representative of all discrepancies.

A	Detail No.
B	No. du détail
C	drawing no. - where detail required dessin no. - ou detail exige
	drawing no. - where detailed dessin no. - ou detaillé

project title
titre du projet
COBOURG ON
COBOURG CITY

COBOURG SEARCH AND RESCUE STATION

drawing title
titre du dessin
ELECTRICAL LIGHTING SECOND FLOOR LAYOUT

drawn by
dessiné par
T. CLARK

designed by
conçu par
C. SITKOWSKI

approved by
approuvé par
M. MOORE

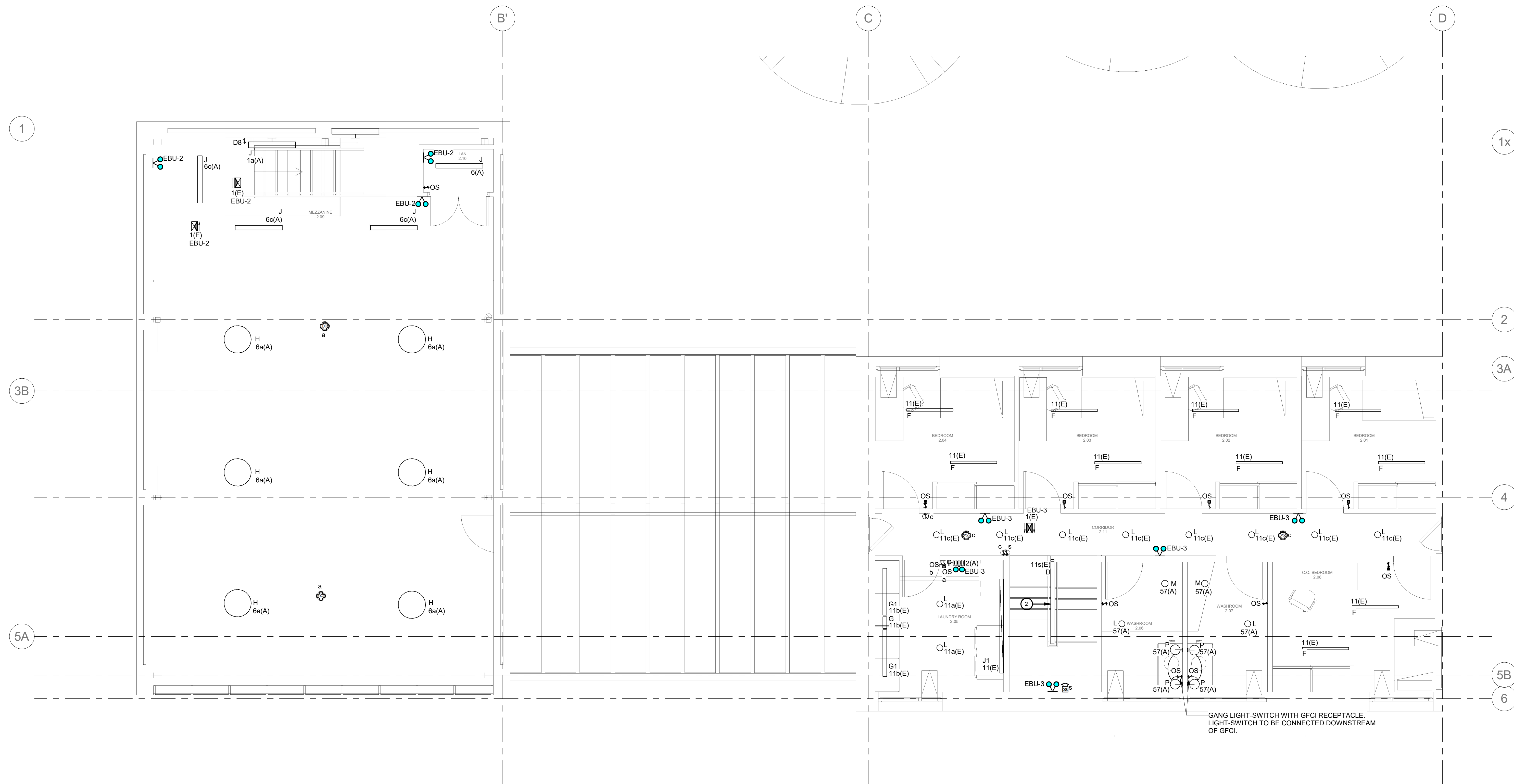
bid
offre
ELISABETH OHI

project manager
administrateur de projets

project date
date du projet
20-03-2019

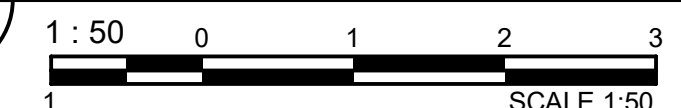
project no.
no. du projet
R.084112.005

drawing no.
dessiné no.
E201



GANG LIGHT-SWITCH WITH GFCI RECEPTACLE. LIGHT-SWITCH TO BE CONNECTED DOWNSTREAM OF GFCI.

1 SECOND FLOOR - LIGHTING LAYOUT



- DRAWING NOTES:**
- ① WIRE HALLWAY LIGHTING SO THAT SWITCH PROVIDES MANUAL ON AND OCCUPANCY SENSORS PROVIDE MANUAL OFF.
 - ② LIGHT IN STAIR IS EMBEDDED IN DRYWALL KNEE WALL. PROVIDE A SINGLE CONTINUOUS LIGHT LENGTH. REFER TO ARCHITECTURAL DRAWINGS FOR PRECISE DIMENSION.