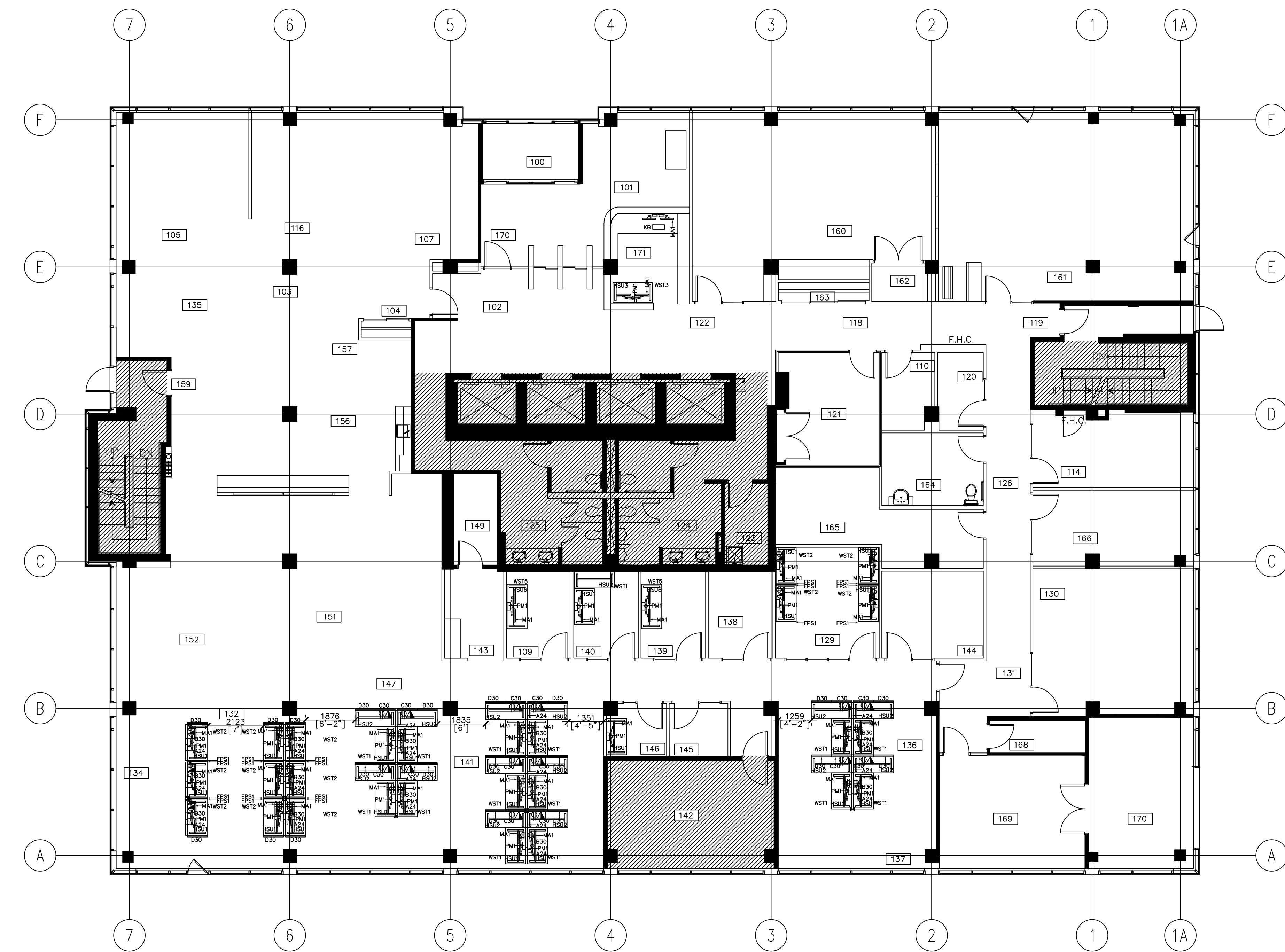


LEGEND LEGENDE
⊕ DUPLEX RECEPTACLE PRISE DE COURANT DOUBLE
⊕ QUADRAPLEX RECEPTACLE PRISE DE COURANT QUADRUPLER
▲ DATA BOITIER POUR INFORMATIQUE
— FURNITURE PANEL PANNEAU DE MOBILIER
■ BASE FEED ALIMENTATION DE BASE
☒ POWER POLE POTEAU ELECTRIQUE CEILING HEIGHT 8'-2" ON ALL TYPICAL, 6TH, 9TH AND 11TH FLOORS AND 10'-3" ON GROUND FLOOR HAUTEUR SOUS PLAFOND 8'-2" SUR TOUS LES ETAGES TYPIQUES, 6EME, 9EME ET 11EME ETAGES ET 10'-3" AU REZ-DE-CHAUSSEE
— UNDER CARPET WIREWAY SYSTEM SYSTEME SOUS-TAPIS POUR TELECOMMUNICATION ET POUVOIR
⊕▲ FLOOR MOUNTED RECEPTACLES PRISE AU SOL



1 FURNITURE PLAN GROUND FLOOR (1) / PLAN DE MEUBLES REZ-DE-CHAUSSEE (1)
ID-1 SCALE / ECHELLE: 1:100

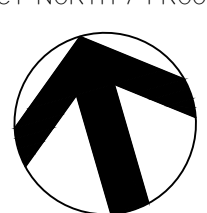
3	2021.02.11	Issued for 100% review/submission pour 100% examen
2	2021.01.15	Issued for 99% review/submission pour 99% examen
1	2020.12.09	reissued for 66% review/submission pour 66% examen

NO.	DATE	REVISION
-----	------	----------

THE CONTRACTOR SHALL BE RESPONSIBLE TO CONFIRM ALL DIMENSIONS AND SITE CONDITIONS AFFECTING THE WORK AND SHALL BE FULLY RESPONSIBLE FOR THE ACCURACY OF THE MEASUREMENTS AND OBSERVATIONS.

L'ENTREPRENEUR SERA TENU RESPONSABLE POUR CONFIRMER TOUTES DIMENSIONS ET CONDITIONS DU SITE AFFECTANT LES TRAVAUX ET SERA ENTIEREMENT RESPONSABLE POUR LA PRECISION DES DIMENSIONS ET D'OBSERVATIONS.

STAMP / TIMBRE: PROJECT NORTH / PROJET NORD



A	A DETAIL NUMBER / NUMERO DE DETAIL	A
B	B LOCATION ON DRAWING NO. / EMPLACEMENT SUR LE DESSIN NO.	B
C	C DRAWING NUMBER / NUMERO DE DESSIN	C

PROJECT
222 NEPEAN STREET –
DFO FIT-UP
OTTAWA, ONTARIO

222 RUE NEPEAN –
AMENAGEMENT DFO
OTTAWA, ONTARIO

DRAWING TITLE
FURNITURE PLAN –
GROUND FLOOR (1)
CATEGORY 1, 2, 5

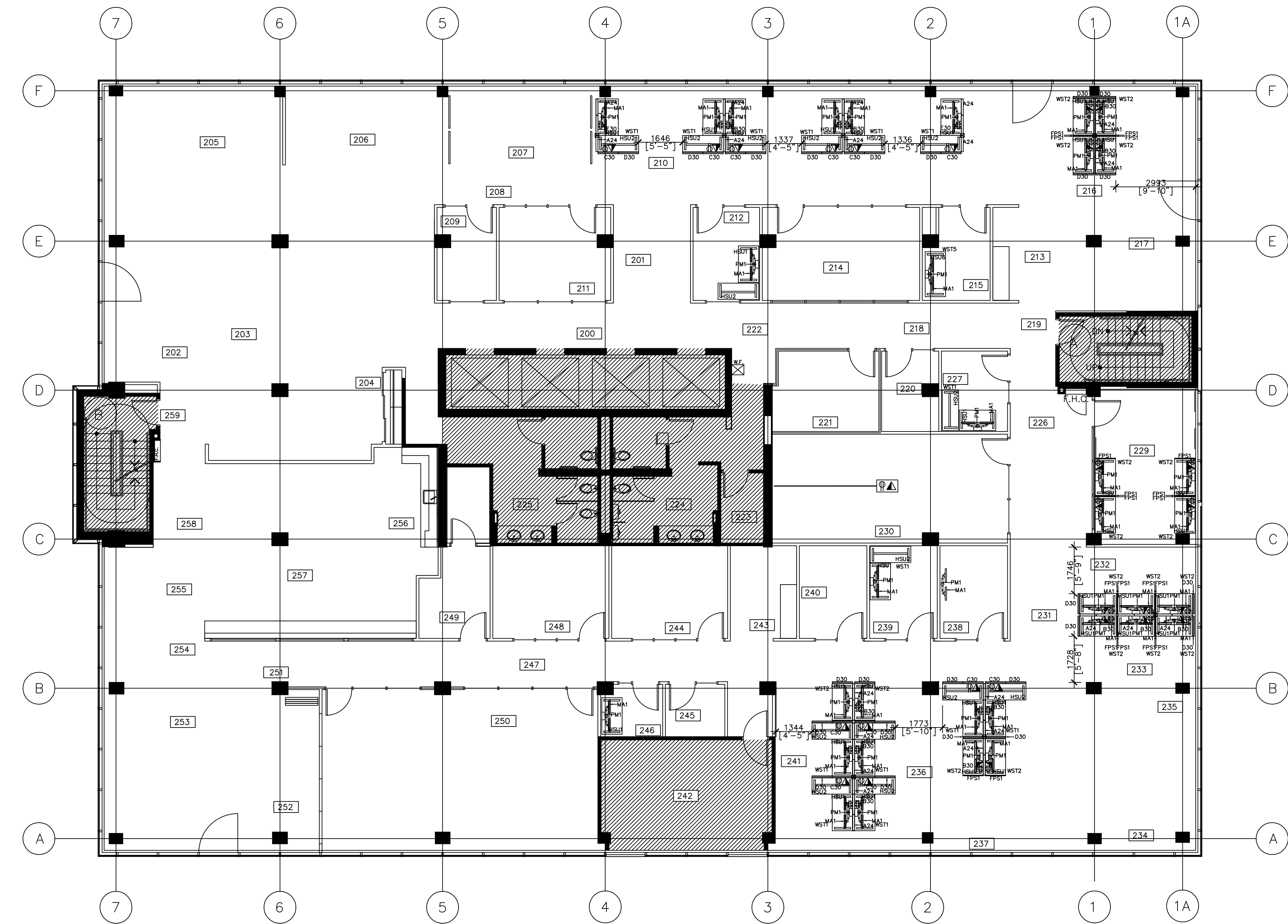
PLAN DE MOBILIER –
REZ-DE-CHAUSSEE (1)
CATEGORIE 1, 2, 5

SCALE / ECHELLE
AS NOTED

DATE
APRIL 2020

PROJECT NO.
NUMERO DE PROJET
20026

DRAWING NO. / PLAN NO.
ID-1



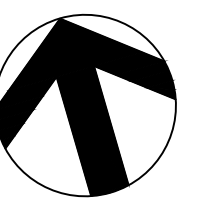
1 FURNITURE PLAN TYPICAL FLOOR (2, 3, 4, 5, 7, 8, 10) / PLAN DE MEUBLES ETAGE TYPIQUE (2, 3, 4, 5, 7, 8, 10)
ID-2 SCALE / ECHELLE: 1:100

5	2021.02.11	Issued for 100% review/submission pour 100% examen
4	2021.01.15	Issued for 99% review/submission pour 99% examen
3	2020.12.09	reissued for 66% review/submission pour 66% examen
2	2020.07.08	Issued for 66% review/submission pour 66% examen
1	2020.06.09	Issued for 33% review/submission pour 33% examen
NO.	DATE	REVISION

THE CONTRACTOR SHALL BE RESPONSIBLE TO CONFIRM ALL DIMENSIONS AND SITE CONDITIONS AFFECTING THE WORK AND SHALL BE FULLY RESPONSIBLE FOR THE ACCURACY OF THE MEASUREMENTS AND OBSERVATIONS.

L'ENTREPRENEUR SERA TENU RESPONSABLE POUR CONFIRMER TOUTES DIMENSIONS ET CONDITIONS DU SITE AFFECTANT LES TRAVAUX ET SERA ENTIEREMENT RESPONSABLE POUR LA PRECISION DES DIMENSIONS ET D'OBSERVATIONS.

STAMP / TIMBRE: PROJECT NORTH / PROJET NORD



A	A DETAIL NUMBER / NUMERO DE DETAIL	A
B	B LOCATION ON DRAWING NO. / EMPLACEMENT SUR LE DESSIN NO.	B
C	C DRAWING NUMBER / NUMERO DE DESSIN	C

PROJECT
222 NEPEAN STREET –
DFO FIT-UP
OTTAWA, ONTARIO

222 RUE NEPEAN –
AMENAGEMENT DFO
OTTAWA, ONTARIO

DRAWING TITLE
FURNITURE PLAN –
TYPICAL FLOOR 2, 3, 4, 5, 7, 8, 10
CATEGORY 1, 2, 5

PLAN DE MOBILIER –
ETAGE TYPIQUE 2, 3, 4, 5, 7, 8, 10
CATEGORIE 1, 2, 5

SCALE / ECHELLE
AS NOTED

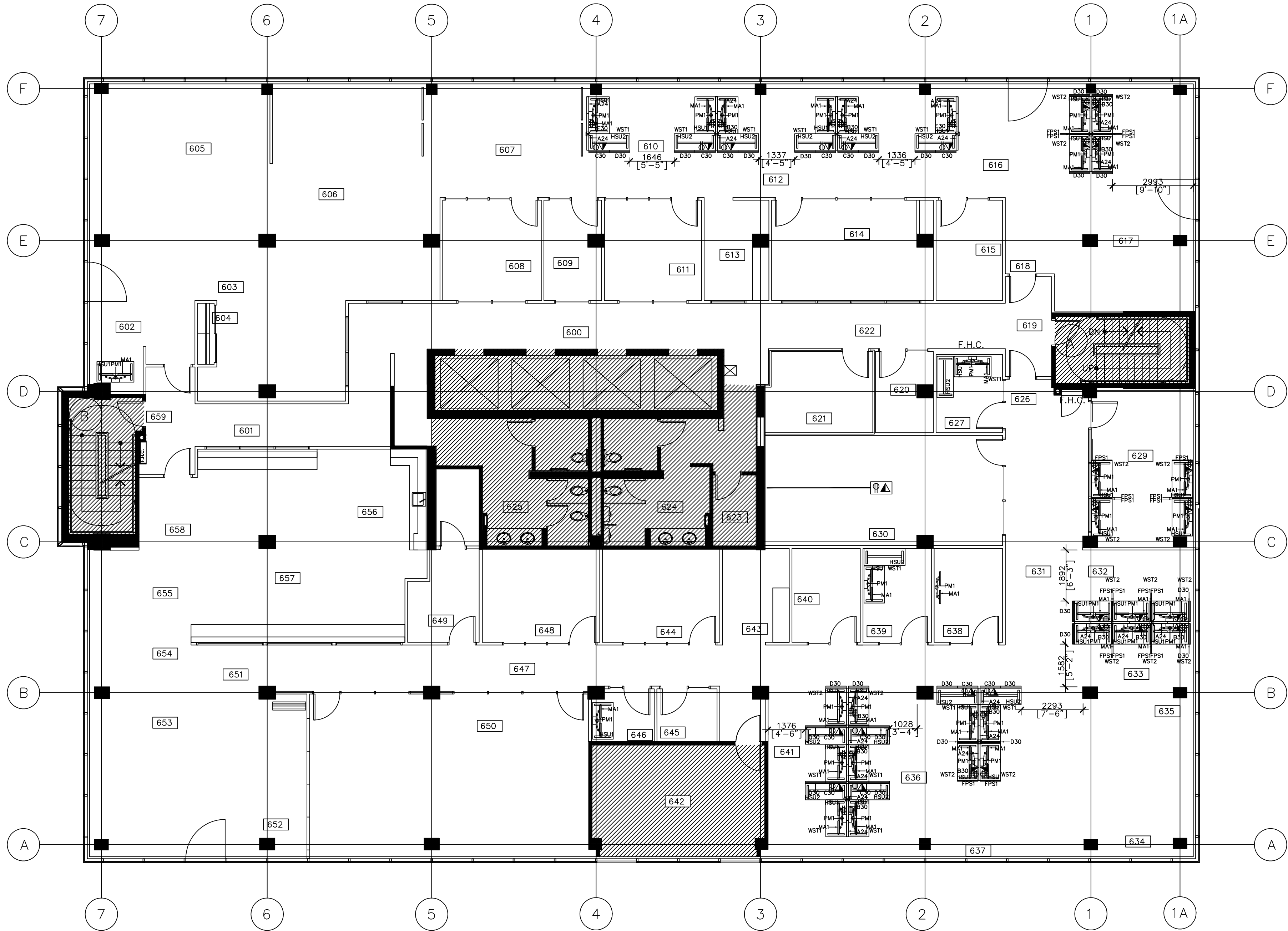
DATE
APRIL 2020

PROJECT NO.
NUMERO DE PROJET
20026

DRAWN BY
DESSINE PAR
VP

CHECKED BY / VERIFIE PAR
SAS

DRAWING NO. / PLAN NO.
ID-2



LEGEND
LEGENDE

⊕ DUPLEX RECEPTACLE
PRISE DE COURANT DOUBLE

⊕ QUADRAPLEX RECEPTACLE
PRISE DE COURANT QUADRUPLER

▲ DATA
BOITIER POUR INFORMATIQUE

— FURNITURE PANEL
Panneau de Mobilier

■ BASE FEED
ALIMENTATION DE BASE

⊗ POWER POLE
POTEAU ELECTRIQUE
CEILING HEIGHT 8'-2" ON ALL
TYPICAL, 6TH, 9TH AND 11TH FLOORS
AND 10'-3" ON GROUND FLOOR
HAUTEUR SOUS PLAFOND 8'-2" SUR
TOUS LES ETAGES TYPQUES, 6EME,
9EME ET 11EME ETAGES ET 10'-3"
AU REZ-DE-CHAUSSEE

— UNDER CARPET WIREWAY SYSTEM
SYSTEME SOUS-TAPIS POUR
TELECOMMUNICATION ET POUVOIR

⊕▲ FLOOR MOUNTED RECEPTACLES
PRISE AU SOL

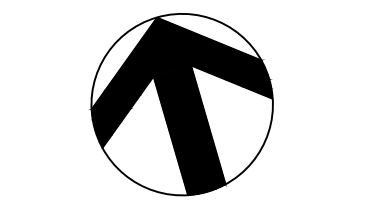
1 FURNITURE PLAN CROSSOVER FLOOR (6) / PLAN DE MEUBLES ETAGE CROISEMENT (6)
ID-3 SCALE / ECHELLE: 1:100

5	2021.02.11	Issued for 100% review/submission pour 100% examen
4	2021.01.15	Issued for 99% review/submission pour 99% examen
3	2020.12.09	reissued for 66% review/submission pour 66% examen
2	2020.07.08	Issued for 66% review/submission pour 66% examen
1	2020.06.09	Issued for 33% review/submission pour 33% examen
NO.	DATE	REVISION

THE CONTRACTOR SHALL BE RESPONSIBLE TO CONFIRM ALL DIMENSIONS AND SITE CONDITIONS AFFECTING THE WORK AND SHALL BE FULLY RESPONSIBLE FOR THE ACCURACY OF THE MEASUREMENTS AND OBSERVATIONS.

L'ENTREPRENEUR SERA TENU RESPONSABLE POUR CONFIRMER TOUTES DIMENSIONS ET CONDITIONS DU SITE AFFECTANT LES TRAVAUX ET SERA ENTIEREMENT RESPONSABLE POUR LA PRECISION DES DIMENSIONS ET D'OBSERVATIONS.

STAMP / TIMBRE



A	A DETAIL NUMBER / NUMERO DE DETAIL	A
B	B LOCATION ON DRAWING NO. / EMPLACEMENT SUR LE DESSIN NO.	B
C	C DRAWING NUMBER / NUMERO DE DESSIN	C

PROJECT
222 NEPEAN STREET –
DFO FIT-UP
OTTAWA, ONTARIO

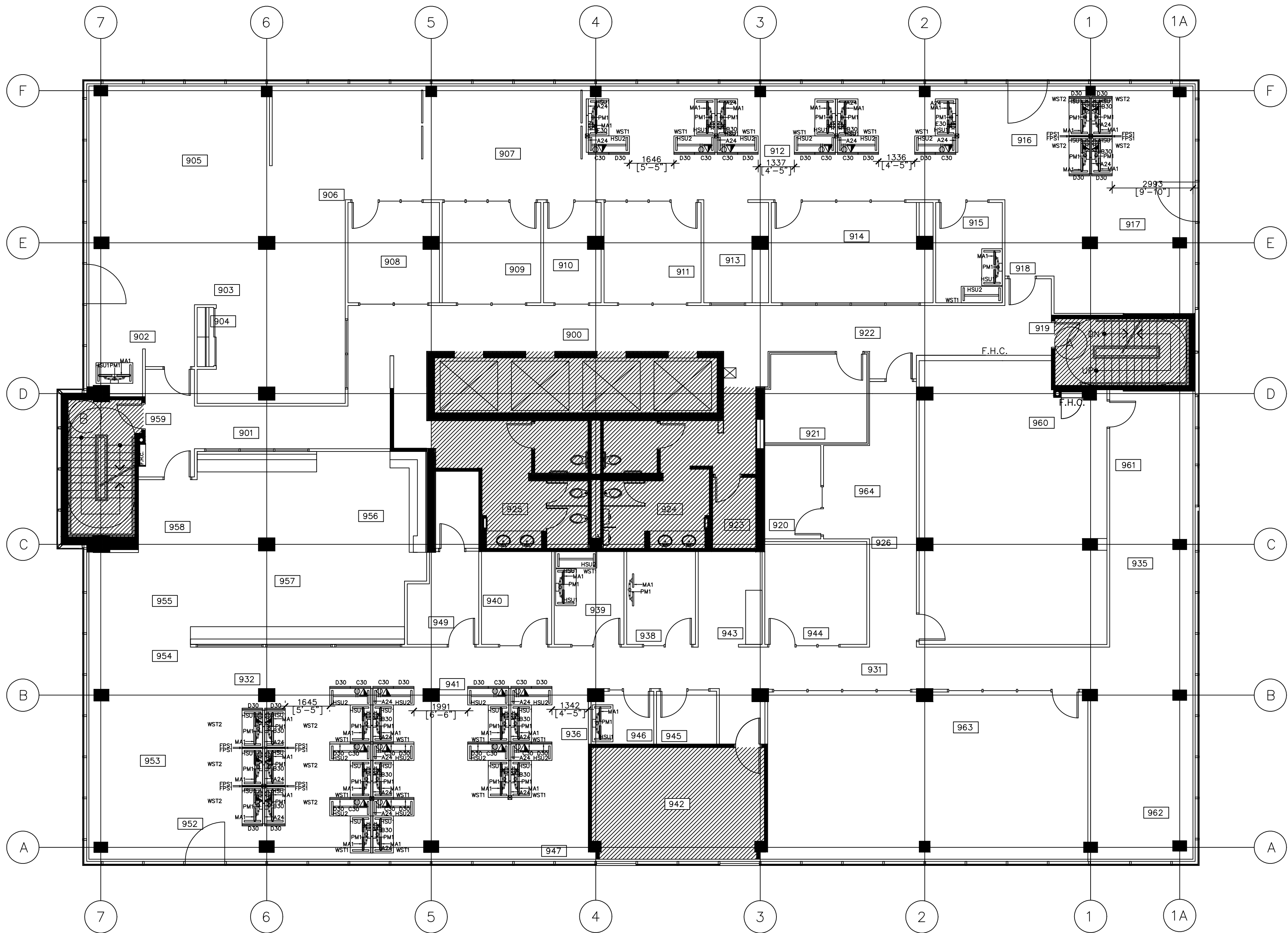
222 RUE NEPEAN –
AMENAGEMENT DFO
OTTAWA, ONTARIO

DRAWING TITLE

FURNITURE PLAN –
CROSSOVER FLOOR (6)
CATEGORY 1, 2, 5

PLAN DE MOBILIER –
ETAGE CROISEMENT (6)
CATEGORIE 1, 2, 5

SCALE / ECHELLE AS NOTED	DRAWN BY / DESSINE PAR VP	DESIGNED BY / EXECUTE PAR JB
DATE APRIL 2020	CHECKED BY / VERIFIE PAR SAS	
PROJECT NO. NUMERO DE PROJET 20026	DRAWING NO. / PLAN NO. ID-3	



LEGEND
LEGENDE

⊕ DUPLEX RECEPTACLE
PRISE DE COURANT DOUBLE

⊕ QUADRAPLEX RECEPTACLE
PRISE DE COURANT QUADRUPLER

▲ DATA
BOITIER POUR INFORMATIQUE

— FURNITURE PANEL
PANNEAU DE MOBILIER

■ BASE FEED
ALIMENTATION DE BASE

☒ POWER POLE
POTEAU ELECTRIQUE
CEILING HEIGHT 8'-2" ON ALL
TYPICAL, 6TH, 9TH AND 11TH FLOORS
AND 10'-3" ON GROUND FLOOR
HAUTEUR SOUS PLAFOND 8'-2" SUR
TOUS LES ETAGES TYPIQUES, 6EME,
9EME ET 11EME ETAGES ET 10'-3"
AU REZ-DE-CHAUSSEE

— UNDER CARPET WIREWAY SYSTEM
SYSTEME SOUS-TAPIS POUR
TELECOMMUNICATION ET POUVOIR

⊕ FLOOR MOUNTED RECEPTACLES
PRISE AU SOL

1 FURNITURE PLAN NINTH FLOOR (9) / PLAN DE MEUBLES NEUVIEME ETAGE (9)
ID-4 SCALE / ECHELLE: 1:100

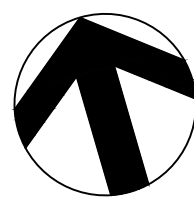
3	2021.02.11	issued for 100% review/submission pour 100% examen
2	2021.01.15	issued for 99% review/submission pour 99% examen
1	2020.12.09	reissued for 66% review/submission pour 66% examen
NO.	DATE	REVISION

THE CONTRACTOR SHALL BE RESPONSIBLE TO CONFIRM ALL DIMENSIONS AND SITE CONDITIONS AFFECTING THE WORK AND SHALL BE FULLY RESPONSIBLE FOR THE ACCURACY OF THE MEASUREMENTS AND OBSERVATIONS.

L'ENTREPRENEUR SERA TENU RESPONSABLE POUR CONFIRMER TOUTES DIMENSIONS ET CONDITIONS DU SITE AFFECTANT LES TRAVAUX ET SERA ENTIEREMENT RESPONSABLE POUR LA PRECISION DES DIMENSIONS ET D'OBSERVATIONS.

STAMP / TIMBRE

PROJECT NORTH / PROJET NORD



A	A DETAIL NUMBER / NUMERO DE DETAIL	A
B	B LOCATION ON DRAWING NO. / EMPLACEMENT SUR LE DESSIN NO.	B
C	C DRAWING NUMBER / NUMERO DE DESSIN	C

PROJECT
222 NEPEAN STREET –
DFO FIT-UP
OTTAWA, ONTARIO

222 RUE NEPEAN –
AMENAGEMENT DFO
OTTAWA, ONTARIO

DRAWING TITLE
FURNITURE PLAN –
NINTH FLOOR (9)
CATEGORY 1, 2, 5

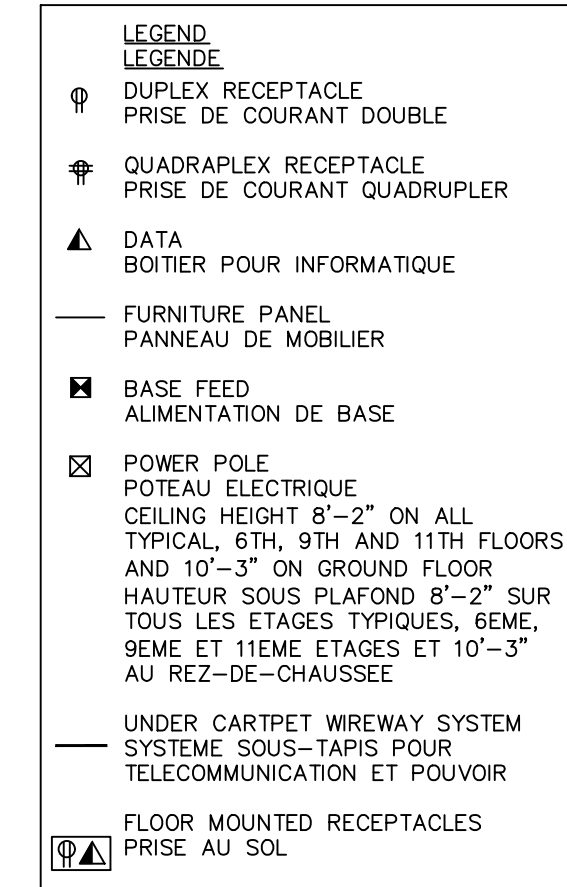
PLAN DE MOBILIER –
NEUVIEME ETAGE (9)
CATEGORIE 1, 2, 5

SCALE / ECHELLE
AS NOTED

DATE
APRIL 2020

PROJECT NO.
NUMERO DE PROJET
20026

DRAWING NO. / PLAN NO.
ID-4

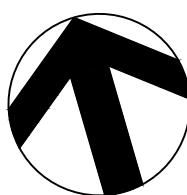


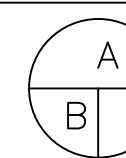
1 FURNITURE PLAN
ID-5 SCALE / ECHELLE: 1:100

2021.02.11	Issued for 100% review/ submission pour 100% examen	
2	2021.01.15	Issued for 99% review/ submission pour 99% examen
1	2020.12.09	reissued for 66% review/ submission pour 66% examen
NO.	DATE	REVISION

THE CONTRACTOR SHALL BE RESPONSIBLE TO CONFIRM ALL DIMENSIONS AND SITE CONDITIONS AFFECTING THE WORK AND SHALL BE FULLY RESPONSIBLE FOR THE ACCURACY OF THE MEASUREMENTS AND OBSERVATIONS.

L'ENTREPRENEUR SERA TENU RESPONSABLE POUR CONFIRMER TOUTES DIMENSIONS ET CONDITIONS DU SITE AFFECTANT LES TRAVAUX ET SERA ENTIEREMENT RESPONSABLE POUR LA PRECISION DES DIMENSIONS ET D'OBSERVATIONS.

STAMP / TIMBRE	PROJECT NORTH / PROJET NORD
	

	A DETAIL NUMBER / NUMERO DE DETAIL	
	B LOCATION ON DRAWING NO. / EMPLACEMENT SUR LE DESSIN NO.	
	C DRAWING NUMBER / NUMERO DE DESSIN	

PROJECT

222 NEPEAN STREET –
DFO FIT–UP
OTTAWA, ONTARIO

222 RUE NEPEAN –
AMENAGEMENT DFO
OTTAWA, ONTARIO

DRAWING TITLE

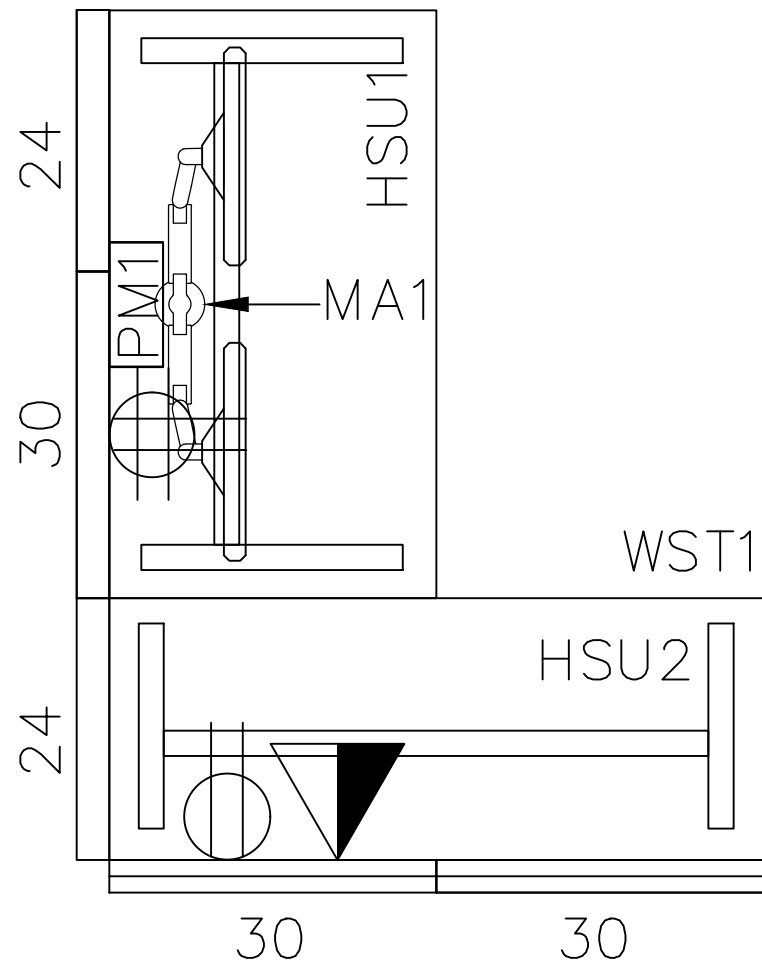
FURNITURE PLAN –
ELEVENTH FLOOR (11)
CATEGORY 1, 2, 5

PLAN DE MOBILIER –
ONZIEME ETAGE (11)
CATEGORIE 1, 2, 5

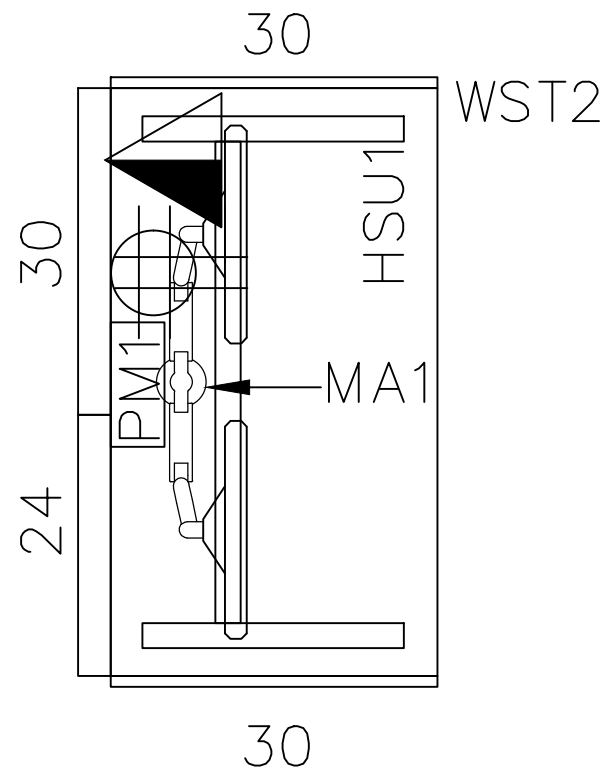
SCALE / ECHELLE	DRAWN BY / DESSINE PAR	DESIGNED BY / EXECUTE PAR
AS NOTED	VP	JB
DATE	CHECKED BY / VERIFIE PAR	
APRIL 2020	SAS	
PROJECT NO. NUMERO DE PROJET	DRAWING NO. / PLAN NO.	

20026 ID-5

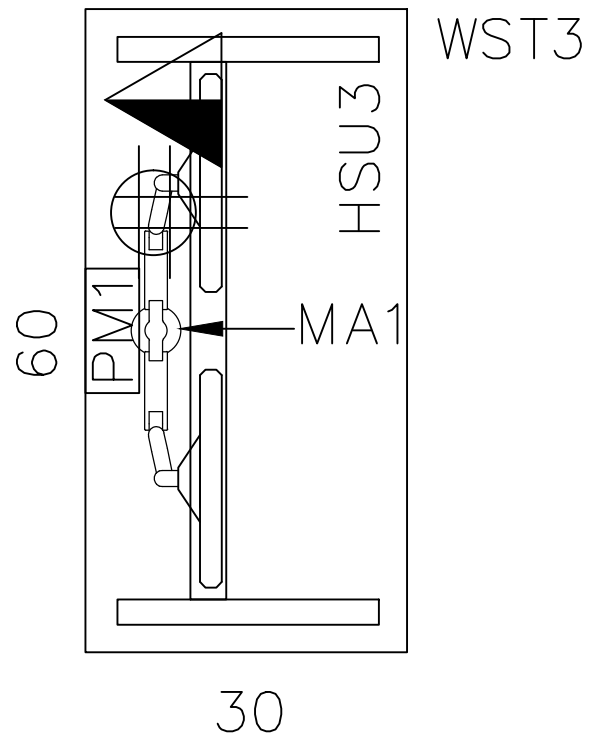
TYPICAL WORKSTATION (WST1)
POSTE DE TRAVAIL TYPIQUE



TYPICAL TOUCHDOWN (WST2)
POINT DE TRANSITION TYPIQUE



TYPICAL WORKSTATION (WST3)
POSTE DE TRAVAIL TYPIQUE



CATEGORY 1A / CATEGORIE 1A
REFER TO FLOOR PLANS / SE REFERER AUX PLANS

CATEGORY 1B / CATEGORIE 1B
HSU 1 1371MM (54") X 762MM (30") HEIGHT ADJUSTABLE WORK SURFACE, HIGH PRESSURE LAMINATE, ELECTRICALLY ASSISTED
HSU 1 1371MM (54") X 762MM (30") SURFACE DE TRAVAIL, SURFACE DE TRAVAIL REGLABLE EN HAUTEUR, FINITION STRATIFIEE EN PLASTIQUE HAUTE PRESSION, ELECTRIQUE
HSU 2 1524MM (60") X 610MM (24") HEIGHT ADJUSTABLE WORK SURFACE, HIGH PRESSURE LAMINATE, CRANK ASSISTED
HSU 2 1524MM (60") X 610MM (24") SURFACE DE TRAVAIL REGLABLE EN HAUTEUR, FINITION STRATIFIEE EN PLASTIQUE HAUTE PRESSION, MANIVELLE

CATEGORY 5 / CATEGORIE 5
PM1 DESK TOP POWER MODULE WITH 1 DUPLEX AND 2 USB PORTS
PM1 MODULE DE PUISSANCE, SUR SURFACE DE TRAVAIL, ALIMENTATION 1 DUPLEX ET 2 PORTS USB
MA1 DUAL HORIZONTAL COMPUTER SCREEN ARM WITH SLIDERS ON BOTH SIDES, CLAMP MOUNTED
MA1 BRAS D'ECRAN D'ORDINATEUR DOUBLE HORIZONTAL AVEC CURSEURS LES DEUX COTES, MONTE SUR PINCE

CATEGORY 1A / CATEGORIE 1A
REFER TO FLOOR PLANS / SE REFERER AUX PLANS

CATEGORY 1B / CATEGORIE 1B
HSU 1 1371MM (54") X 762MM (30") HEIGHT ADJUSTABLE WORK SURFACE, HIGH PRESSURE LAMINATE, ELECTRICALLY ASSISTED
HSU 1 1371MM (54") X 762MM (30") SURFACE DE TRAVAIL, SURFACE DE TRAVAIL REGLABLE EN HAUTEUR, FINITION STRATIFIEE EN PLASTIQUE HAUTE PRESSION, ELECTRIQUE

CATEGORY 5 / CATEGORIE 5
PM1 DESK TOP POWER MODULE WITH 1 DUPLEX AND 2 USB PORTS
PM1 MODULE DE PUISSANCE, SUR SURFACE DE TRAVAIL, ALIMENTATION 1 DUPLEX ET 2 PORTS USB
MA1 DUAL HORIZONTAL COMPUTER SCREEN ARM WITH SLIDERS ON BOTH SIDES, CLAMP MOUNTED
MA1 BRAS D'ECRAN D'ORDINATEUR DOUBLE HORIZONTAL AVEC CURSEURS SUR LES DEUX COTES, MONTE SUR PINCE

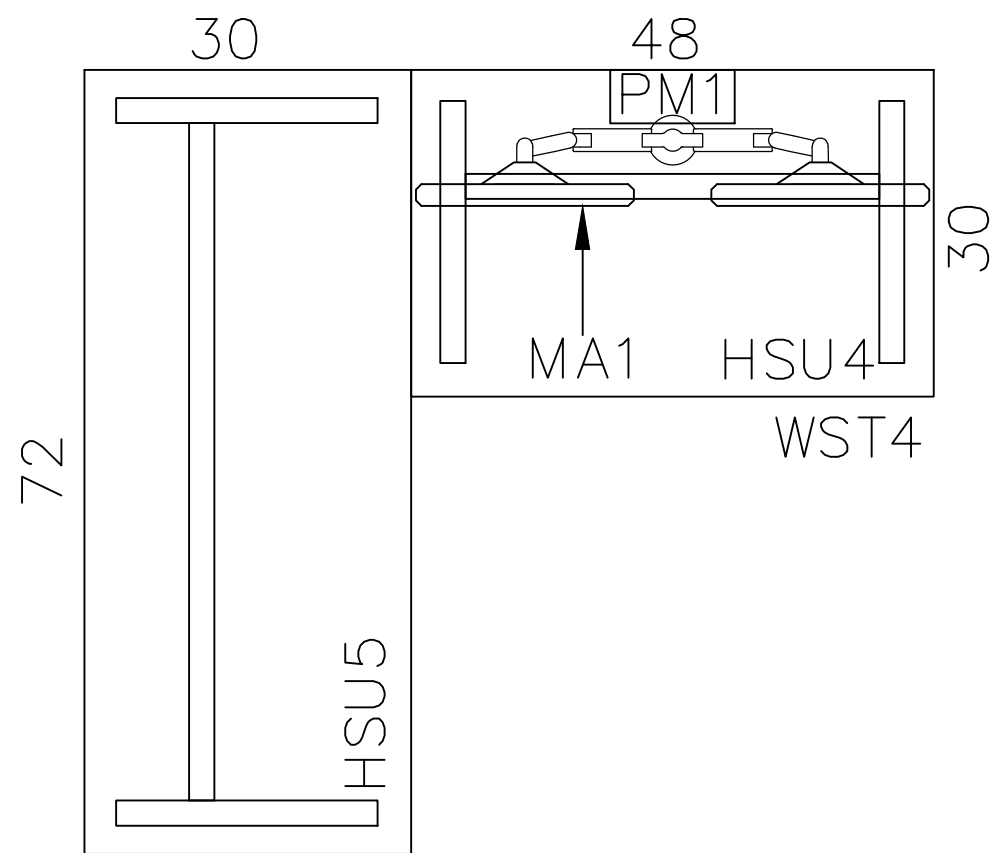
CATEGORY 1A / CATEGORIE 1A
REFER TO FLOOR PLANS / SE REFERER AUX PLANS

CATEGORY 1B / CATEGORIE 1B
HSU 3 1524MM (60") X 762MM (30") HEIGHT ADJUSTABLE WORK SURFACE, HIGH PRESSURE LAMINATE, ELECTRICALLY ASSISTED
HSU 3 1524MM (60") X 762MM (30") SURFACE DE TRAVAIL, SURFACE DE TRAVAIL REGLABLE EN HAUTEUR, FINITION STRATIFIEE EN PLASTIQUE HAUTE PRESSION, ELECTRIQUE

CATEGORY 5 / CATEGORIE 5
PM1 DESK TOP POWER MODULE WITH 1 DUPLEX AND 2 USB PORTS
PM1 MODULE DE PUISSANCE, SUR SURFACE DE TRAVAIL, ALIMENTATION 1 DUPLEX ET 2 PORTS USB
MA1 DUAL HORIZONTAL COMPUTER SCREEN ARM WITH SLIDERS ON BOTH SIDES, CLAMP MOUNTED
MA1 BRAS D'ECRAN D'ORDINATEUR DOUBLE HORIZONTAL AVEC CURSEURS SUR LES DEUX COTES, MONTE SUR PINCE

5	2021.02.11	Issued for 100% review/submission pour 100% examen
4	2021.01.15	Issued for 99% review/submission pour 99% examen
3	2020.12.09	reissued for 66% review/submission pour 66% examen
2	2020.07.08	Issued for 66% review/submission pour 66% examen
1	2020.06.09	Issued for 33% review/submission pour 33% examen
NO.	DATE	REVISION
THE CONTRACTOR SHALL BE RESPONSIBLE TO CONFIRM ALL DIMENSIONS AND SITE CONDITIONS AFFECTING THE WORK AND SHALL BE FULLY RESPONSIBLE FOR THE ACCURACY OF THE MEASUREMENTS AND OBSERVATIONS. L'ENTREPRENEUR SERA TENU RESPONSABLE POUR CONFIRMER TOUTES DIMENSIONS ET CONDITIONS DU SITE AFFECTANT LES TRAVAUX ET SERA ENTIEREMENT RESPONSABLE POUR LA PRECISION DES DIMENSIONS ET D'OBSERVATIONS.		
STAMP / TIMBRE		PROJECT NORTH / PROJET NORD
<div>A C</div>	<div>A B C</div>	<div>A B C</div>
PROJECT 222 NEPEAN STREET – DFO FIT-UP OTTAWA, ONTARIO 222 RUE NEPEAN – AMENAGEMENT DFO OTTAWA, ONTARIO		
DRAWING TITLE TYPICAL DATA SHEET & PANEL MATRIX FEUILLE D'INFORMATION TYPIQUE & MATRICE DE PANNEAU		
SCALE / ECHELLE AS NOTED	DRAWN BY DESSINE PAR VP	DESIGNED BY EXECUTE PAR JB
DATE APRIL 2020	CHECKED BY / VERIFIE PAR SAS	
PROJECT NO. NUMERO DE PROJET 20026	DRAWING NO. / PLAN NO. ID-6	

TYPICAL WORKSTATION (WST4)
POSTE DE TRAVAIL TYPIQUE



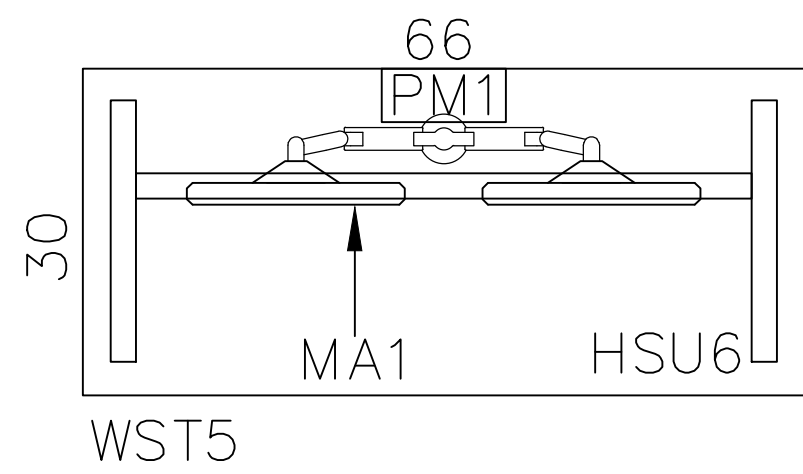
CATREGORY |A / CATEGORIE 1A
REFER TO FLOOR PLANS / SE REFERER AUX PLANS

CATREGORY |B / CATEGORIE 1B
HSU 4 1219MM (48”) X 762MM (30”) HEIGHT ADJUSTABLE WORK SURFACE, WOOD VENEER, ELECTRICALLY ASSISTED
HSU 4 1219MM (48”) X 762MM (30”) SURFACE DE TRAVAIL REGLABLE EN HAUTEUR, PLACAGE DE BOIS, ELECTRIQUE
HSU 5 1829MM (72”) X 762MM (30”) HEIGHT ADJUSTABLE WORK SURFACE, PARTIAL MODESTY PANEL, WOOD VENEER, CRANK ASSISTED
HSU 5 1829MM (72”) X 762MM (30”) SURFACE DE TRAVAIL REGLABLE EN HAUTEUR, PANNEAU DE MODESTE PARTIELLE, PLACAGE DE BOIS, MANIVELLE

CATREGORY 5 / CATEGORIE 5
PM1 DESK TOP POWER MODULE WITH 1 DUPLEX AND 2 USB PORTS
PM1 MODULE DE PUISSANCE, SUR SURFACE DE TRAVAIL, ALIMENTATION 1 DUPLEX ET 2 PORTS USB

MA1 DUAL HORIZONTAL COMPUTER SCREEN ARM WITH SLIDERS ON BOTH SIDES, CLAMP MOUNTED
MA1 BRAS D’ECRAN D’ORDINATEUR DOUBLE HORIZONTAL AVEC CURSEURS SUR LES DEUX COTES, MONTE SUR PINCE

TYPICAL WORKSTATION (WST5)
POSTE DE TRAVAIL TYPIQUE



CATREGORY |A / CATEGORIE 1A
REFER TO FLOOR PLANS / SE REFERER AUX PLANS

CATREGORY |B / CATEGORIE 1B
HSU 6 1676MM (66”) X 762MM (30”) HEIGHT ADJUSTABLE WORK SURFACE, HIGH PRESSURE LAMINATE, ELECTRICALLY ASSISTED
HSU 6 1676MM (66”) X 762MM (30”) SURFACE DE TRAVAIL, SURFACE DE TRAVAIL REGLABLE EN HAUTEUR, FINITION STRATIFIEE EN PLASTIQUE HAUTE PRESSION, ELECTRIQUE

CATREGORY 5 / CATEGORIE 5
PM1 DESK TOP POWER MODULE WITH 1 DUPLEX AND 2 USB PORTS
PM1 MODULE DE PUISSANCE, SUR SURFACE DE TRAVAIL, ALIMENTATION 1 DUPLEX ET 2 PORTS USB

MA1 DUAL HORIZONTAL COMPUTER SCREEN ARM WITH SLIDERS ON BOTH SIDES, CLAMP MOUNTED
MA1 BRAS D’ECRAN D’ORDINATEUR DOUBLE HORIZONTAL AVEC CURSEURS SUR LES DEUX COTES, MONTE SUR PINCE

5	2021.02.11	Issued for 100% review/submission pour 100% examen
4	2021.01.15	Issued for 99% review/submission pour 99% examen
3	2020.12.09	reissued for 66% review/submission pour 66% examen
2	2020.07.08	Issued for 66% review/submission pour 66% examen
1	2020.06.09	Issued for 33% review/submission pour 33% examen

NO.	DATE	REVISION
THE CONTRACTOR SHALL BE RESPONSIBLE TO CONFIRM ALL DIMENSIONS AND SITE CONDITIONS AFFECTING THE WORK AND SHALL BE FULLY RESPONSIBLE FOR THE ACCURACY OF THE MEASUREMENTS AND OBSERVATIONS. L'ENTREPRENEUR SERA TENU RESPONSABLE POUR CONFIRMER TOUTES DIMENSIONS ET CONDITIONS DU SITE AFFECTANT LES TRAVAUX ET SERA ENTIEREMENT RESPONSABLE POUR LA PRECISION DES DIMENSIONS ET D'OBSERVATIONS.		

STAMP / TIMBRE	PROJECT NORTH / PROJET NORD
----------------	---------------------------------

<div>A</div> <div>C</div>	A DETAIL NUMBER / NUMERO DE DETAIL B LOCATION ON DRAWING NO. / EMPLACEMENT SUR LE DESSIN NO. C DRAWING NUMBER / NUMERO DE DESSIN	<div>A</div> <div>B</div> <div>C</div>
---------------------------	---	--

PROJECT 222 NEPEAN STREET – DFO FIT–UP OTTAWA, ONTARIO 222 RUE NEPEAN – AMENAGEMENT DFO OTTAWA, ONTARIO

DRAWING TITLE TYPICAL DATA SHEET & PANEL MATRIX FEUILLE D'INFORMATION TYPIQUE & MATRICE DE PANNEAU
--

SCALE / ECHELLE AS NOTED	DRAWN BY DESSINE PAR VP	DESIGNED BY EXECUTE PAR JB
DATE APRIL 2020	CHECKED BY / VERIFIE PAR SAS	
PROJECT NO. NUMERO DE PROJET 20026	DRAWING NO. / PLAN NO. ID–7	

PANEL TYPE / TYPE DE PANNEAU: A

PANEL HEIGHT / HAUTEUR DES CLOISONS: SEATED PRIVACY ADD-ON /
PANNEAU ADDITIONNEL POUR INTIMITE EN POSITION ASSISE

UPPER ELEMENT 1 / ELEMENT SUPERIEUR 1	UPPER ELEMENT 2 / ELEMENT SUPERIEUR 2
FABRIC / TISSU	FABRIC / TISSU
LOWER ELEMENT 1 / ELEMENT INFERIEUR 1	LOWER ELEMENT 2 / ELEMENT INFERIEUR 2
FABRIC / TISSU	FABRIC / TISSU

SIDE / COTE 1

SIDE / COTE 2

PANEL TYPE / TYPE DE PANNEAU: B

PANEL HEIGHT / HAUTEUR DES CLOISONS: SEATED PRIVACY ADD-ON /
PANNEAU ADDITIONNEL POUR INTIMITE EN POSITION ASSISE

UPPER ELEMENT 1 / ELEMENT SUPERIEUR 1	UPPER ELEMENT 2 / ELEMENT SUPERIEUR 2
FABRIC / TISSU	FABRIC / TISSU
LOWER ELEMENT 1 / ELEMENT INFERIEUR 1	LOWER ELEMENT 2 / ELEMENT INFERIEUR 2
CUT-OUTS FOR POWER & DATA, FABRIC – BELOW THE WORKSURFACE / CAVITESS FINIES POUR L'INSERTION DE PRISES ELECTRIQUE, FABRIC – CI-DESSUS DE LA SURFACE	CUT-OUTS FOR POWER & DATA, FABRIC – BELOW THE WORKSURFACE / CAVITESS FINIES POUR L'INSERTION DE PRISES ELECTRIQUE, FABRIC – CI-DESSUS DE LA SURFACE

SIDE / COTE 1

SIDE / COTE 2

PANEL TYPE / TYPE DE PANNEAU: C

PANEL HEIGHT / HAUTEUR DES CLOISONS: SEATED PRIVACY ADD-ON /
PANNEAU ADDITIONNEL POUR INTIMITE EN POSITION ASSISE

UPPER ELEMENT 1 / ELEMENT SUPERIEUR 1	UPPER ELEMENT 2 / ELEMENT SUPERIEUR 2
FROSTED GLASS/VITRE GIVRE	FROSTED GLASS/VITRE GIVRE
LOWER ELEMENT 1 / ELEMENT INFERIEUR 1	LOWER ELEMENT 2 / ELEMENT INFERIEUR 2
CUT-OUTS FOR POWER & DATA, FABRIC – BELOW THE WORKSURFACE / CAVITESS FINIES POUR L'INSERTION DE PRISES ELECTRIQUE, FABRIC – CI-DESSUS DE LA SURFACE	FABRIC / TISSU

SIDE / COTE 1

SIDE / COTE 2

PANEL TYPE / TYPE DE PANNEAU: D

PANEL HEIGHT / HAUTEUR DES CLOISONS: SEATED PRIVACY ADD-ON /
PANNEAU ADDITIONNEL POUR INTIMITE EN POSITION ASSISE

UPPER ELEMENT 1 / ELEMENT SUPERIEUR 1	UPPER ELEMENT 2 / ELEMENT SUPERIEUR 2
FROSTED GLASS/VITRE GIVRE	FROSTED GLASS/VITRE GIVRE
LOWER ELEMENT 2 / ELEMENT INFERIEUR 2	LOWER ELEMENT 2 / ELEMENT INFERIEUR 2
FABRIC / TISSU	FABRIC / TISSU

SIDE / COTE 1

SIDE / COTE 2

PANEL TYPE / TYPE DE PANNEAU: E

PANEL HEIGHT / HAUTEUR DES CLOISONS: SEATED PRIVACY ADD-ON /
PANNEAU ADDITIONNEL POUR INTIMITE EN POSITION ASSISE

UPPER ELEMENT 1 / ELEMENT SUPERIEUR 1	UPPER ELEMENT 2 / ELEMENT SUPERIEUR 2
FABRIC / TISSU	FABRIC / TISSU
LOWER ELEMENT 1 / ELEMENT INFERIEUR 1	LOWER ELEMENT 2 / ELEMENT INFERIEUR 2
CUT-OUTS FOR POWER & DATA, FABRIC – BELOW THE WORKSURFACE / CAVITESS FINIES POUR L'INSERTION DE PRISES ELECTRIQUE, FABRIC – CI-DESSUS DE LA SURFACE	FABRIC / TISSU

SIDE / COTE 1

SIDE / COTE 2

5	2021.02.11	Issued for 100% review/submission pour 100% examen
4	2021.01.15	Issued for 99% review/submission pour 99% examen
3	2020.12.09	reissued for 66% review/submission pour 66% examen
2	2020.07.08	Issued for 66% review/submission pour 66% examen
1	2020.06.09	Issued for 33% review/submission pour 33% examen

NO.	DATE	REVISION
-----	------	----------

THE CONTRACTOR SHALL BE RESPONSIBLE TO CONFIRM ALL DIMENSIONS AND SITE CONDITIONS AFFECTING THE WORK AND SHALL BE FULLY RESPONSIBLE FOR THE ACCURACY OF THE MEASUREMENTS AND OBSERVATIONS.

L'ENTREPRENEUR SERA TENU RESPONSABLE POUR CONFIRMER TOUTES DIMENSIONS ET CONDITIONS DU SITE AFFECTANT LES TRAVAUX ET SERA ENTIEREMENT RESPONSABLE POUR LA PRECISION DES DIMENSIONS ET D'OBSERVATIONS.

STAMP / TIMBRE	PROJECT NORTH / PROJET NORD

<div>A</div> <div>C</div>	<div>A</div> <div>B</div> <div>C</div>
---------------------------	--

PROJECT
222 NEPEAN STREET –
DFO FIT-UP
OTTAWA, ONTARIO

222 RUE NEPEAN –
AMENAGEMENT DFO
OTTAWA, ONTARIO

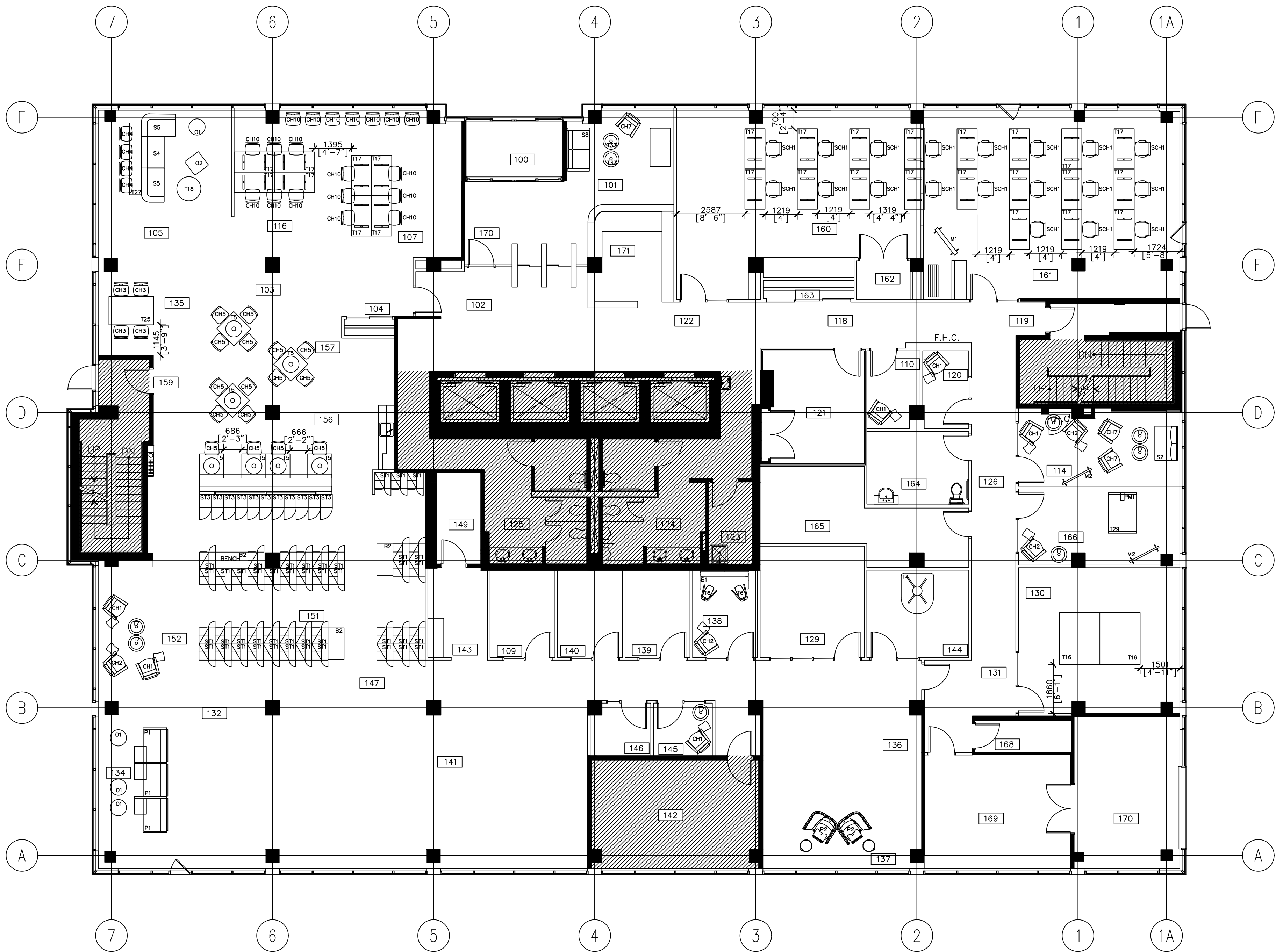
DRAWING TITLE
TYPICAL DATA SHEET & PANEL
MATRIX

FEUILLE D'INFORMATION TYPIQUE &
MATRICE DE PANNEAU

SCALE / ECHELLE	DRAWN BY DESSINE PAR	DESIGNED BY EXECUTE PAR
-----------------	-------------------------	----------------------------

DATE	CHECKED BY / VERIFIE PAR
------	--------------------------

PROJECT NO. NUMÉRO DE PROJET	DRAWING NO. / PLAN NO.
---------------------------------	------------------------



1 FURNITURE PLAN GROUND FLOOR (1) / PLAN DE MEUBLES REZ-DE-CHAUSSEE (1)
ID-9 SCALE / ECHELLE: 1:100

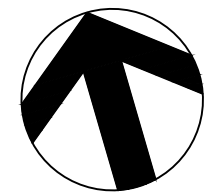
3	2021.02.11	issued for 100% review/submission pour 100% examen
2	2021.01.15	issued for 99% review/submission pour 99% examen
1	2020.12.09	reissued for 66% review/submission pour 66% examen
NO.	DATE	REVISION

THE CONTRACTOR SHALL BE RESPONSIBLE TO CONFIRM ALL DIMENSIONS AND SITE CONDITIONS AFFECTING THE WORK AND SHALL BE FULLY RESPONSIBLE FOR THE ACCURACY OF THE MEASUREMENTS AND OBSERVATIONS.

L'ENTREPRENEUR SERA TENU RESPONSABLE POUR CONFIRMER TOUTES DIMENSIONS ET CONDITIONS DU SITE AFFECTANT LES TRAVAUX ET SERA ENTIEREMENT RESPONSABLE POUR LA PRECISION DES DIMENSIONS ET D'OBSERVATIONS.

STAMP / TIMBRE

PROJECT NORTH / PROJET NORD



A	A DETAIL NUMBER / NUMERO DE DETAIL	A
B	B LOCATION ON DRAWING NO. / EMPLACEMENT SUR LE DESSIN NO.	B
C	C DRAWING NUMBER / NUMERO DE DESSIN	C

PROJECT
222 NEPEAN STREET –
DFO FIT-UP
OTTAWA, ONTARIO

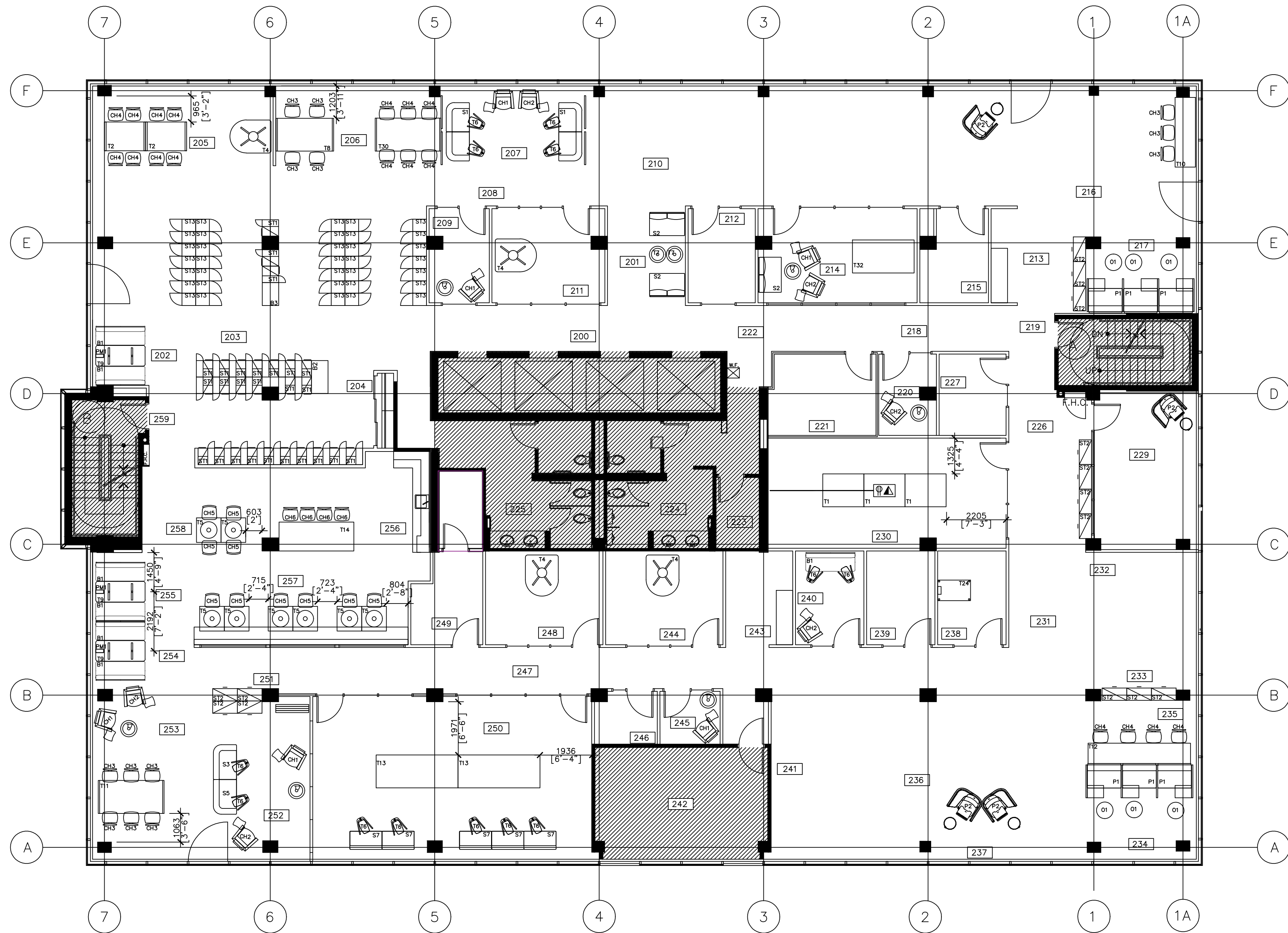
222 RUE NEPEAN –
AMENAGEMENT DFO
OTTAWA, ONTARIO

DRAWING TITLE

FURNITURE PLAN –
GROUND FLOOR (1)
CATEGORY 3 & 6

PLAN DE MOBILIER –
REZ-DE-CHAUSSEE (1)
CATEGORIE 3 & 6

SCALE / ECHELLE AS NOTED	DRAWN BY DESSINE PAR VP	DESIGNED BY EXECUTE PAR JB
DATE APRIL 2020	CHECKED BY / VERIFIE PAR SAS	
PROJECT NO. NUMERO DE PROJET 20026	DRAWING NO. / PLAN NO. ID-9	



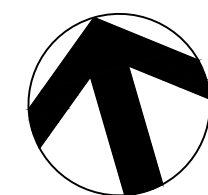
1 FURNITURE PLAN TYPICAL FLOOR (2, 3, 4, 5, 7, 9, 10) / PLAN DE MEUBLES ETAGE TYPIQUE (2, 3, 4, 5, 7, 8, 10)
ID-10 SCALE / ECHELLE: 1:100

5	2021.02.11	Issued for 100% review/submission pour 100% examen
4	2021.01.15	Issued for 99% review/submission pour 99% examen
3	2020.12.09	reissued for 66% review/submission pour 66% examen
2	2020.07.08	Issued for 66% review/submission pour 66% examen
1	2020.06.09	Issued for 33% review/submission pour 33% examen
NO.	DATE	REVISION

THE CONTRACTOR SHALL BE RESPONSIBLE TO CONFIRM ALL DIMENSIONS AND SITE CONDITIONS AFFECTING THE WORK AND SHALL BE FULLY RESPONSIBLE FOR THE ACCURACY OF THE MEASUREMENTS AND OBSERVATIONS.

L'ENTREPRENEUR SERA TENU RESPONSABLE POUR CONFIRMER TOUTES DIMENSIONS ET CONDITIONS DU SITE AFFECTANT LES TRAVAUX ET SERA ENTIEREMENT RESPONSABLE POUR LA PRECISION DES DIMENSIONS ET D'OBSERVATIONS.

STAMP / TIMBRE PROJECT NORTH / PROJET NORD



A	A DETAIL NUMBER / NUMERO DE DETAIL	A
B	B LOCATION ON DRAWING NO. / EMPLACEMENT SUR LE DESSIN NO.	B
C	C DRAWING NUMBER / NUMERO DE DESSIN	C

PROJECT
222 NEPEAN STREET –
DFO FIT-UP
OTTAWA, ONTARIO

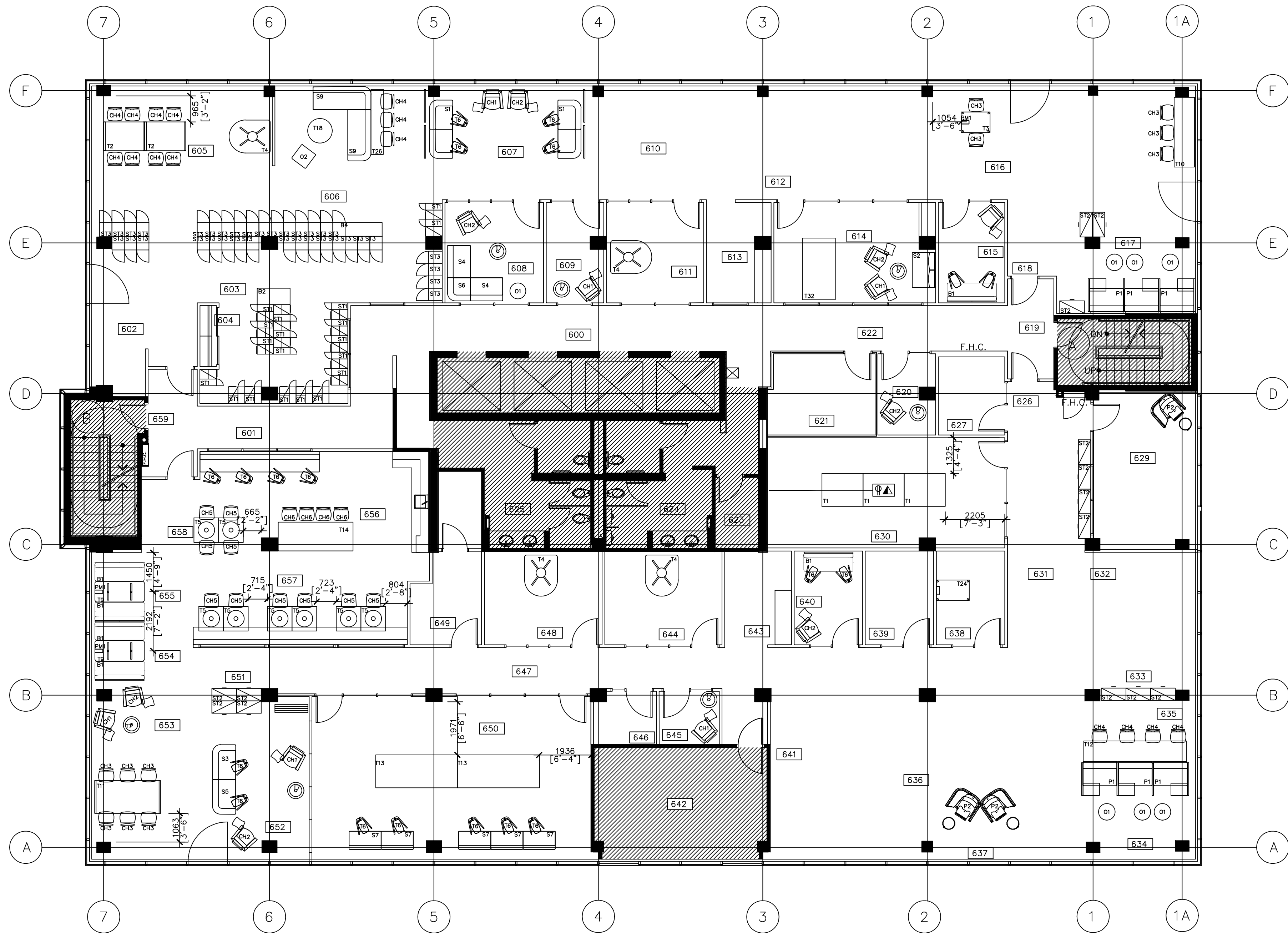
222 RUE NEPEAN –
AMENAGEMENT DFO
OTTAWA, ONTARIO

DRAWING TITLE

FURNITURE PLAN –
TYPICAL FLOOR 2, 3, 4, 5, 7, 8, 10
CATEGORY 3 & 6

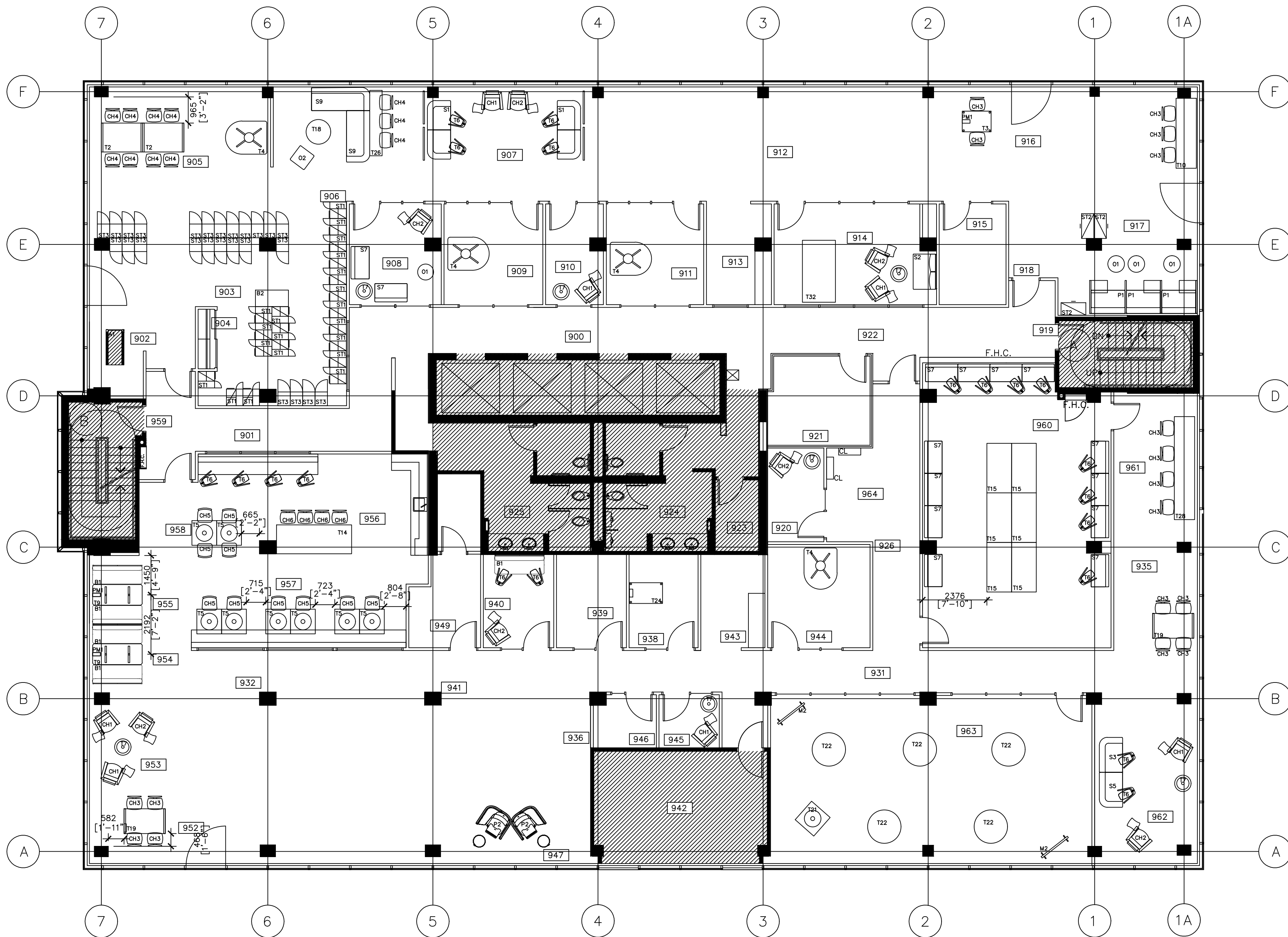
PLAN DE MOBILIER –
ETAGE TYPIQUE 2, 3, 4, 5, 7, 8, 10
CATEGORIE 3 & 6

SCALE / ECHELLE AS NOTED	DRAWN BY DESSINE PAR VP	DESIGNED BY EXECUTE PAR JB
DATE APRIL 2020	CHECKED BY / VERIFIE PAR SAS	
PROJECT NO. NUMERO DE PROJET 20026	DRAWING NO. / PLAN NO. ID-10	



1 FURNITURE PLAN CROSSOVER FLOOR (6) / PLAN DE MEUBLES ETAGE CROISEMENT (6)
ID-11 SCALE / ECHELLE: 1:100

5	2021.02.11	Issued for 100% review/submission pour 100% examen
4	2021.01.15	Issued for 99% review/submission pour 99% examen
3	2020.12.09	reissued for 66% review/submission pour 66% examen
2	2020.07.08	Issued for 66% review/submission pour 66% examen
1	2020.06.09	Issued for 33% review/submission pour 33% examen
NO.	DATE	REVISION
THE CONTRACTOR SHALL BE RESPONSIBLE TO CONFIRM ALL DIMENSIONS AND SITE CONDITIONS AFFECTING THE WORK AND SHALL BE FULLY RESPONSIBLE FOR THE ACCURACY OF THE MEASUREMENTS AND OBSERVATIONS. L'ENTREPRENEUR SERA TENU RESPONSABLE POUR CONFIRMER TOUTES DIMENSIONS ET CONDITIONS DU SITE AFFECTANT LES TRAVAUX ET SERA ENTIEREMENT RESPONSABLE POUR LA PRECISION DES DIMENSIONS ET D'OBSERVATIONS.		
STAMP / TIMBRE		PROJECT NORTH / PROJET NORD
<div><div>A</div><div>C</div></div>	<div><div>A</div><div>B</div><div>C</div></div> <div>A DETAIL NUMBER / NUMERO DE DETAIL B LOCATION ON DRAWING NO. / EMPLACEMENT SUR LE DESSIN NO. C DRAWING NUMBER / NUMERO DE DESSIN</div>	<div><div>A</div><div>B</div><div>C</div></div>
PROJECT 222 NEPEAN STREET – DFO FIT-UP OTTAWA, ONTARIO 222 RUE NEPEAN – AMENAGEMENT DFO OTTAWA, ONTARIO		
DRAWING TITLE FURNITURE PLAN – CROSSOVER FLOOR (6) CATEGORY 3 & 6 PLAN DE MOBILIER – ETAGE CROISEMENT (6) CATEGORIE 3 & 6		
SCALE / ECHELLE AS NOTED	DRAWN BY DESSINE PAR VP	DESIGNED BY EXECUTE PAR JB
DATE APRIL 2020	CHECKED BY / VERIFIE PAR SAS	
PROJECT NO. NUMERO DE PROJET 20026	DRAWING NO. / PLAN NO. ID-11	



1 FURNITURE PLAN NINTH FLOOR (9) / PLAN DE MEUBLES NEUVIEME ETAGE (9)
ID-12 SCALE / ECHELLE: 1:100

3	2021.02.11	Issued for 100% review/submission pour 100% examen
2	2021.01.15	Issued for 99% review/submission pour 99% examen
1	2020.12.09	Issued for 66% review/submission pour 66% examen
NO.	DATE	REVISION

THE CONTRACTOR SHALL BE RESPONSIBLE TO CONFIRM ALL DIMENSIONS AND SITE CONDITIONS AFFECTING THE WORK AND SHALL BE FULLY RESPONSIBLE FOR THE ACCURACY OF THE MEASUREMENTS AND OBSERVATIONS.

L'ENTREPRENEUR SERA TENU RESPONSABLE POUR CONFIRMER TOUTES DIMENSIONS ET CONDITIONS DU SITE AFFECTANT LES TRAVAUX ET SERA ENTIEREMENT RESPONSABLE POUR LA PRECISION DES DIMENSIONS ET D'OBSERVATIONS.

STAMP / TIMBRE	PROJECT NORTH / PROJET NORD

A	A DETAIL NUMBER / NUMERO DE DETAIL	A
B	B LOCATION ON DRAWING NO. / EMPLACEMENT SUR LE DESSIN NO.	B
C	C DRAWING NUMBER / NUMERO DE DESSIN	C

PROJECT
222 NEPEAN STREET –
DFO FIT-UP
OTTAWA, ONTARIO

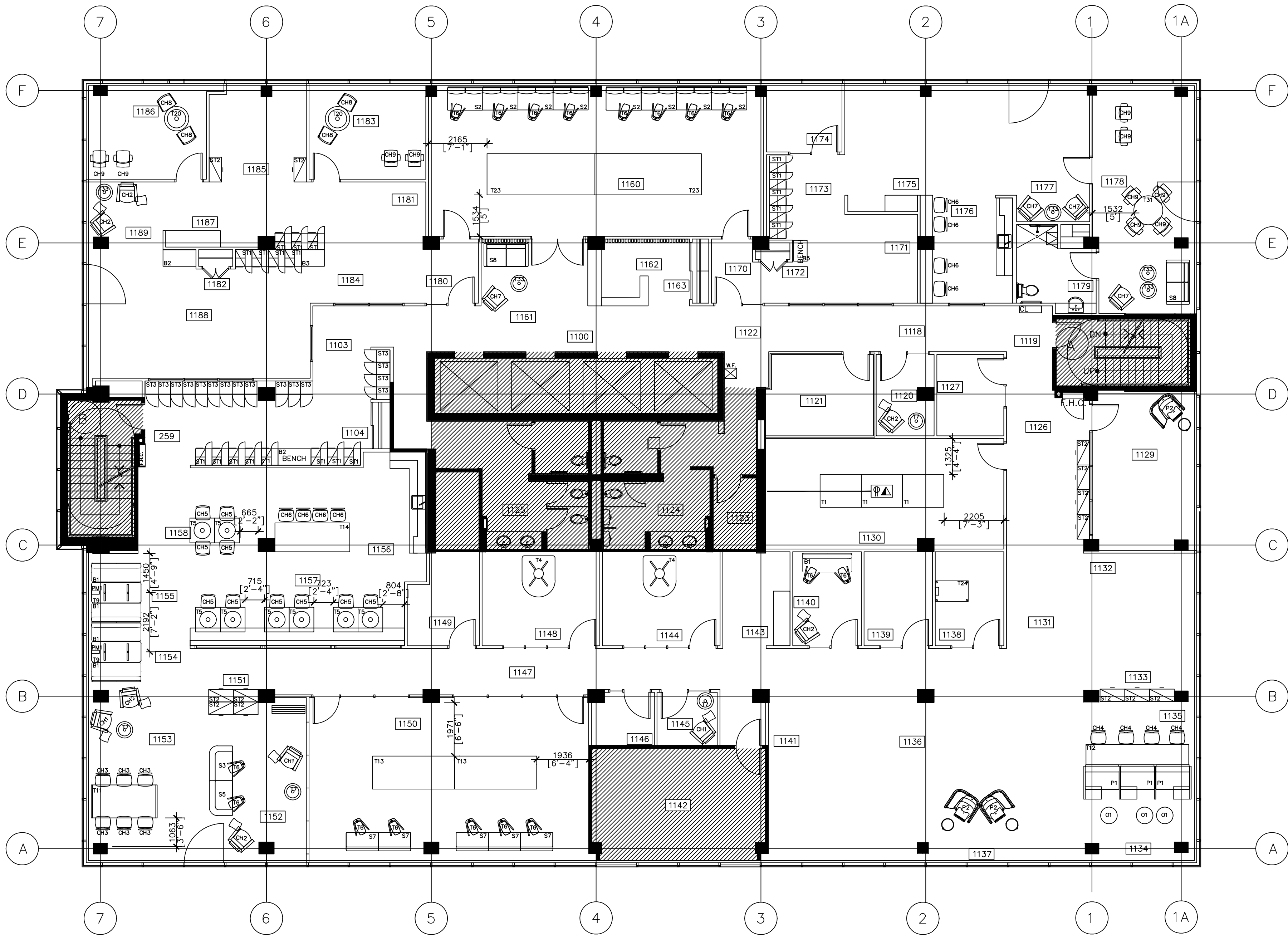
222 RUE NEPEAN –
AMENAGEMENT DFO
OTTAWA, ONTARIO

DRAWING TITLE

FURNITURE PLAN –
NINTH FLOOR (9)
CATEGORY 3 & 6

PLAN DE MOBILIER –
NEUVIEME ETAGE (9)
CATEGORIE 3 & 6

SCALE / ECHELLE	DRAWN BY / DESSINE PAR	DESIGNED BY / EXECUTE PAR
AS NOTED	VP	JB
DATE	CHECKED BY / VERIFIE PAR	
APRIL 2020	SAS	
PROJECT NO. NUMERO DE PROJET	DRAWING NO. / PLAN NO.	
20026	ID-12	



1 FURNITURE PLAN ELEVENTH FLOOR (11) / PLAN DE MEUBLES ONZIEME ETAGE (11)
ID-13 SCALE / ECHELLE: 1:100

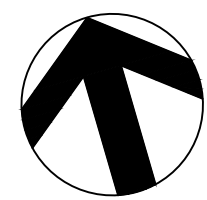
3	2021.02.11	Issued for 100% review/submission pour 100% examen
2	2021.01.15	Issued for 99% review/submission pour 99% examen
1	2020.12.09	Issued for 66% review/submission pour 66% examen
NO.	DATE	REVISION

THE CONTRACTOR SHALL BE RESPONSIBLE TO CONFIRM ALL DIMENSIONS AND SITE CONDITIONS AFFECTING THE WORK AND SHALL BE FULLY RESPONSIBLE FOR THE ACCURACY OF THE MEASUREMENTS AND OBSERVATIONS.

L'ENTREPRENEUR SERA TENU RESPONSABLE POUR CONFIRMER TOUTES DIMENSIONS ET CONDITIONS DU SITE AFFECTANT LES TRAVAUX ET SERA ENTIEREMENT RESPONSABLE POUR LA PRECISION DES DIMENSIONS ET D'OBSERVATIONS.

STAMP / TIMBRE

PROJECT NORTH / PROJET NORD



A	A DETAIL NUMBER / NUMERO DE DETAIL	A
B	B LOCATION ON DRAWING NO. / EMPLACEMENT SUR LE DESSIN NO.	B
C	C DRAWING NUMBER / NUMERO DE DESSIN	C

PROJECT
222 NEPEAN STREET –
DFO FIT-UP
OTTAWA, ONTARIO

222 RUE NEPEAN –
AMENAGEMENT DFO
OTTAWA, ONTARIO

DRAWING TITLE

FURNITURE PLAN –
ELEVENTH FLOOR (11)
CATEGORY 3 & 6

PLAN DE MOBILIER –
ONZIEME ETAGE (11)
CATEGORIE 3 & 6

SCALE / ECHELLE	DRAWN BY / DESSINE PAR	DESIGNED BY / EXECUTE PAR
AS NOTED	VP	JB
DATE	CHECKED BY / VERIFIE PAR	
APRIL 2020	SAS	
PROJECT NO. NUMERO DE PROJET	DRAWING NO. / PLAN NO.	
20026	ID-13	