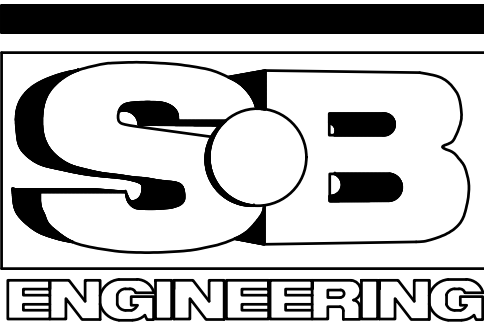


NORTH ELEVATION VIEW
NOT TO SCALE

MECHANICAL SYSTEMS REPAIR SCHEDULE			
MK. NO.	COMPONENT	DESCRIPTION	REF. DWGS.
MK1	SPAN LOCK MACHINERY	CLEAN AND PAINT CORRODED SPAN LOCK MACHINERY COMPONENTS	M-03
MK2	SPAN LOCK RECEIVER	REPLACE DAMAGED RECEIVER MOUNTING BOLTS AND ADJUST SPAN LOCK RECEIVER CLEARANCES	M-02
MK3	LIVE LOAD SUPPORTS	CLEAN AND PAINT CORRODED LIVE LOAD SUPPORT COMPONENTS AND ADJUST LIVE LOAD SUPPORT SHIMS	M-02, M-03
MK4	BUFFER REMOVAL	REMOVAL OF EXISTING BUFFERS	M-02
MK5	BRIDGE BALANCING	SEE SPECIFICATION	-

GENERAL NOTES:

- ALL WORK SHALL BE DONE IN ACCORDANCE WITH CONTRACT DRAWINGS S-01 THRU S-09 AND M-1 THRU M-3 AND THE SPECIFICATIONS. ALL DISCREPANCIES AND/OR CONFLICTS SHALL BE BROUGHT TO THE ATTENTION OF THE DEPARTMENTAL REPRESENTATIVE FOR REVIEW AND CLARIFICATION.
- ALL DISASSEMBLY IS TO BE NON-DESTRUCTIVE UNLESS COMPONENTS CANNOT BE OTHERWISE REMOVED. NOTIFY DEPARTMENTAL REPRESENTATIVE PRIOR TO ANY DESTRUCTIVE REMOVAL. CARE SHALL BE TAKEN TO NOT DAMAGE ANY EXISTING COMPONENTS WHICH ARE TO REMAIN.



4	-	-
3	-	-
2	-	-
1	-	-
revision	description	date

Do not scale drawings.
Verify all dimensions and conditions on site and
immediately notify the engineer of all discrepancies.

<div><div>A</div><div>B</div><div>C</div></div>	A Detail No.
	B drawing no. - where detail required
	C drawing no. - where detailed

project title
Kingston, Ontario
PSPC
LaSalle Causway
Bascule Bridge

STRUCTURAL STEEL REPAIRS

drawing title
**MECHANICAL WORK ID
AND SCHEDULE**

drawn by
M. BROGLIE

designed by
M. BROGLIE

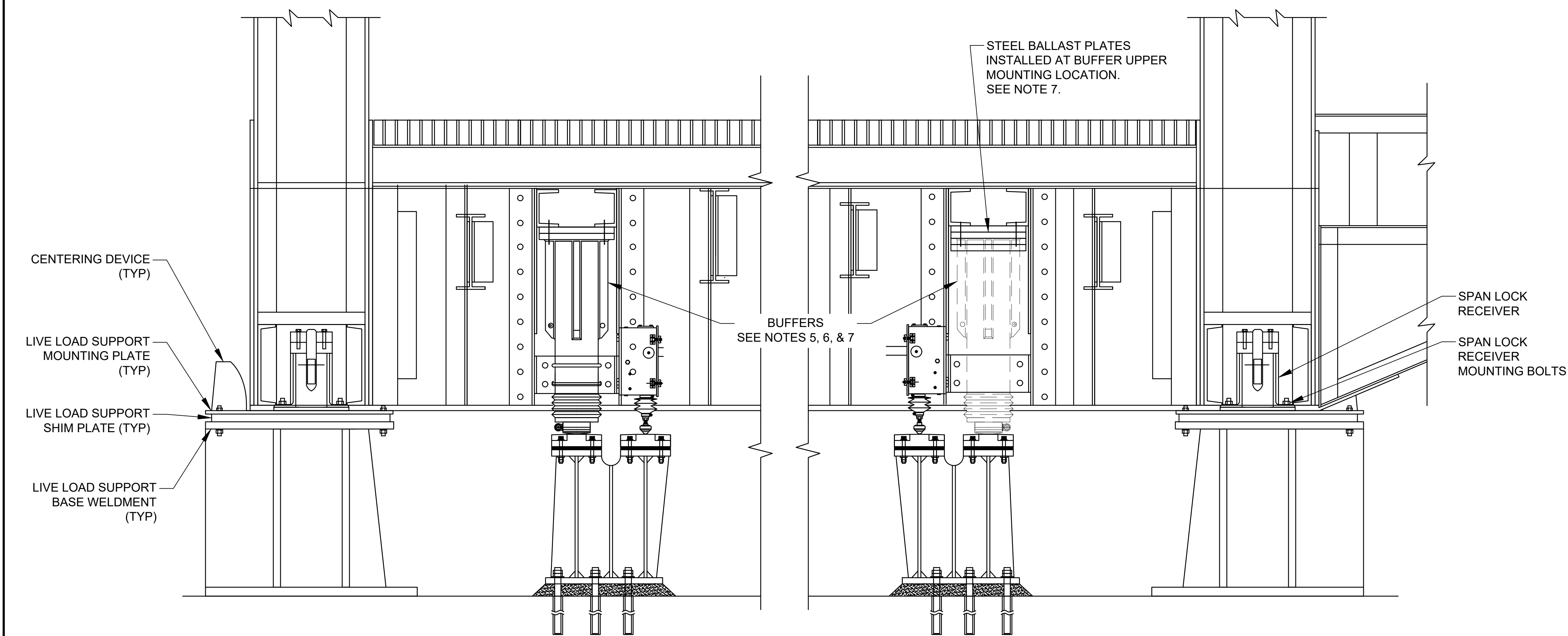
approved by
J. WILLIAMS

tender
- project manager

project date
2021/01/22

project no.
R.097736.002

drawing no.
M-01



ELEVATION VIEW
BRIDGE TOE LOOKING EAST
NOT TO SCALE



DAMAGED SPAN
LOCK RECEIVER
MOUNTING BOLTS

PHOTO OF SOUTH
SPAN LOCK RECEIVER



PHOTO OF NORTH
BUFFER

NOTES:

1. SEE DRAWING M-01 FOR GENERAL NOTES.
2. REMOVE BOTH SPAN LOCK RECEIVERS, SECURING EACH SET OF EXISTING SHIMS AS A BUNDLE. INSPECT THE CONDITION OF MOUNTING PLATE HOLE THREADS. PROVIDE NEW TURNED BOLTS AT THE SOUTH RECEIVER AND RE-INSTALL BOTH RECEIVERS. SEE SPECIFICATION FOR ADDITIONAL INFORMATION. (MK2)
3. ADJUST AND VERIFY SPAN LOCK RECEIVER CLEARANCES AND ALIGNMENT (BOTH SPAN LOCKS). PERFORM FUNCTIONAL TESTING PER SPECIFICATIONS. SEE SPECIFICATION FOR ADDITIONAL INFORMATION. (MK2)
4. ADJUST LIVE LOAD SUPPORT SHIMS AS REQUIRED TO FIRMLY SEAT THE BRIDGE ON BOTH LIVE LOAD SUPPORTS. SEE SPECIFICATION FOR ADDITIONAL INFORMATION. (MK3)
5. SPAN SHALL NOT BE OPERATED FOLLOWING BUFFER REMOVAL UNTIL CORRESPONDING CONTROL SYSTEM MODIFICATIONS HAVE BEEN PERFORMED. SEE SPECIFICATIONS FOR ADDITIONAL INFORMATION. (MK4)
6. BUFFERS CONTAIN INTERNAL SPRINGS. REMOVE BUFFERS WITH SPAN PARTIALLY OPENED AND WITHOUT BUFFERS COMPRESSED. BUFFERS SHALL BE REMOVED BY REMOVAL OF TOP MOUNTING BOLTS AND BODY U-BOLTS. CONTRACTOR MAY REPLACE EXISTING FASTENERS WITH TEMPORARY FASTENERS TO FACILITATE REMOVAL. (MK4)
7. APPROXIMATE BUFFER WEIGHT: 125 kg [275 LB] (MK4)
8. REFER TO THE SPECIFICATION FOR DETAILS OF THE STEEL BALLAST PLATES TO BE FURNISHED BY THE CONTRACTOR. (MK5)

4	-	-
3	-	-
2	-	-
1	-	-
revision	description	date

Do not scale drawings.
Verify all dimensions and conditions on site and
immediately notify the engineer of all discrepancies.

A	Detail No.
B	drawing no. - where detail required
C	drawing no. - where detailed

project title
Kingston, Ontario
PSPC
LaSalle Causway
Bascule Bridge

STRUCTURAL STEEL REPAIRS

drawing title
MECHANICAL WORK
DETAILS I

drawn by
M. BROGLIE
designed by
M. BROGLIE
approved by
J. WILLIAMS
tender
project manager

project date
2021/01/22

project no.
R.097736.002

drawing no.
M-02

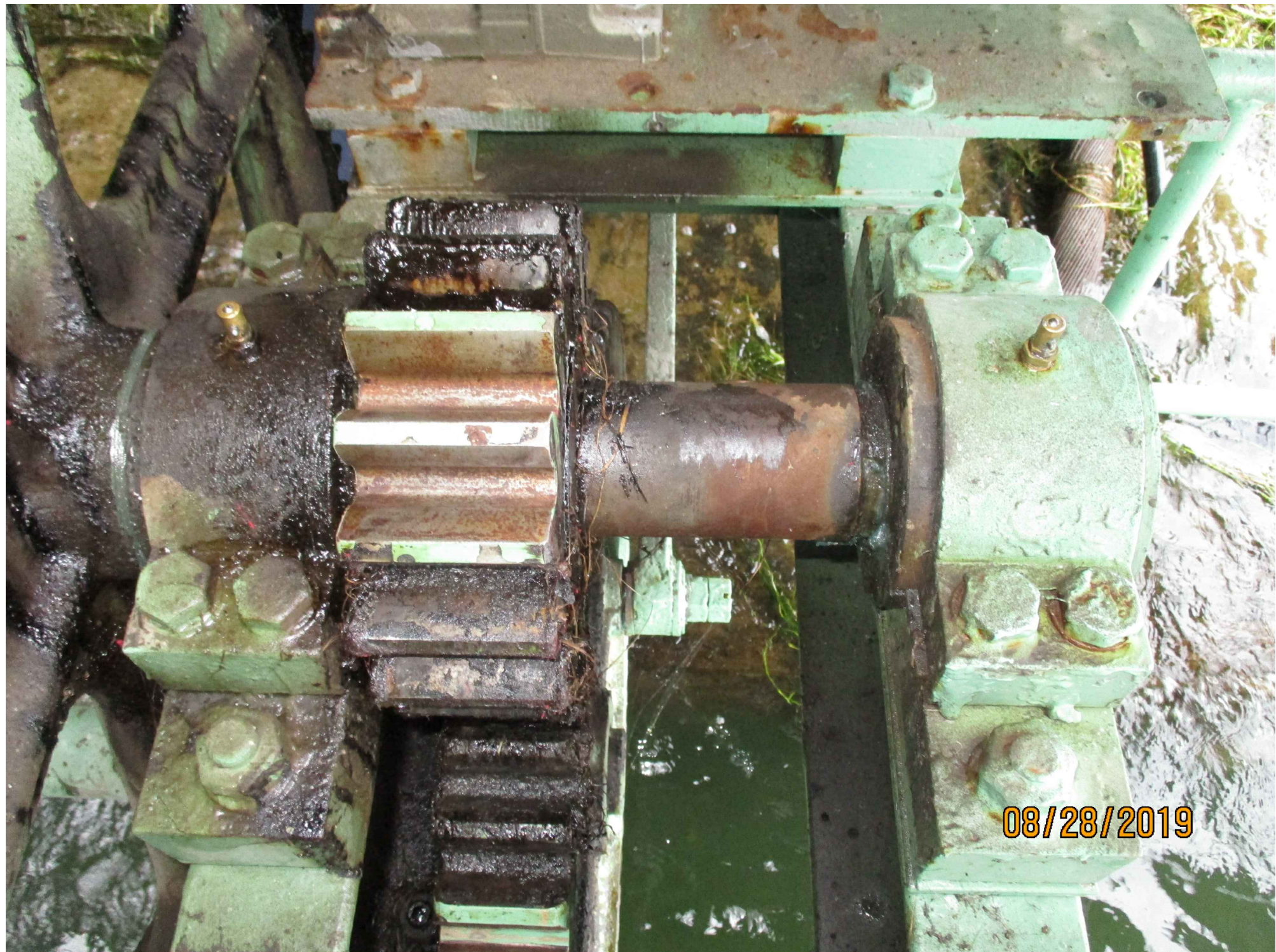


PHOTO OF CORRODED
SPAN LOCK SHAFT



PHOTO OF CORRODED SPAN LOCK
MOTOR/REDUCER SUPPORT MOUNTING BOLTS



PHOTO OF LIVE LOAD
SUPPORT UNDER SIDE



PHOTO OF CORRODED SPAN LOCK
CROSS SHAFT BEARING

NOTES:

- 1. SEE DRAWING M-01 FOR GENERAL NOTES.
- 2. REMOVE CORROSION BY USE OF HAND-HELD TOOLS AND POWER TOOLS ONLY. BLASTING IS NOT PERMITTED. EXERCISE CAUTION TO PREVENT CLEANING AND PAINTING MATERIALS FROM ENTERING MACHINERY COMPONENTS AND COMING INTO CONTACT WITH SLIDING SURFACES WHICH WOULD BE DAMAGED BY SUCH INTRUSION. EXERCISE EXTREME CARE TO PROTECT ALL LUBRICATED AND FAYING SURFACES. DO NOT PAINT LUBRICATED, SLIDING, AND FAYING SURFACES.
- 3. CLEAN AND PAINT ISOLATED AREAS OF CORROSION ON THE FOLLOWING COMPONENTS:
 - 3.1. SPAN LOCK MACHINERY (MK1):
 - 3.1.1. MOTOR AND REDUCER MOUNTING BOLTS AND SUPPORT
 - 3.1.2. BEARING MOUNTING BOLTS
 - 3.1.3. CROSS SHAFTS AND BEARINGS
 - 3.1.4. POSITION INDICATOR ARMS AND MOUNTING BOLTS
 - 3.1.5. ROTARY CAM LIMIT SWITCH ENCLOSURE
 - 3.2. LIVE LOAD SUPPORTS (MK3):
 - 3.2.1. TOP AND BOTTOM OF MOUNTING PLATES
- 4. SEE SPECIFICATION FOR ADDITIONAL PAINTING INFORMATION.

4	-	-
3	-	-
2	-	-
1	-	-
revision	description	date

Do not scale drawings.
Verify all dimensions and conditions on site and
immediately notify the engineer of all discrepancies.

A	Detail No.
B	drawing no. - where detail required
C	drawing no. - where detailed

project title
Kingston, Ontario
PSPC
LaSalle Causway
Bascule Bridge

STRUCTURAL STEEL REPAIRS

drawing title
MECHANICAL WORK
DETAILS II

drawn by
M. BROGLIE

designed by
M. BROGLIE

approved by
J. WILLIAMS

tender
project manager

project date
2021/01/22

project no.
R.097736.002

drawing no.
M-03