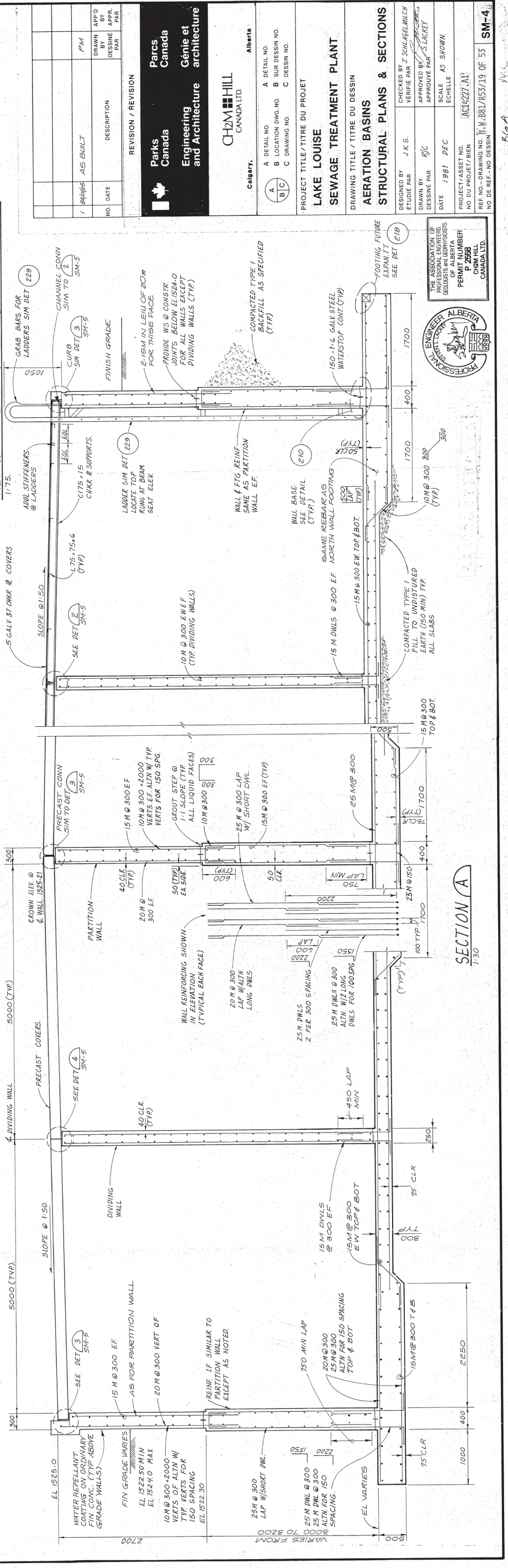


AERATION BASINS FOUNDATION PLAN

1:100

AERATION BASINS COVER PARTIAL PLAN

1:75



SECTION A

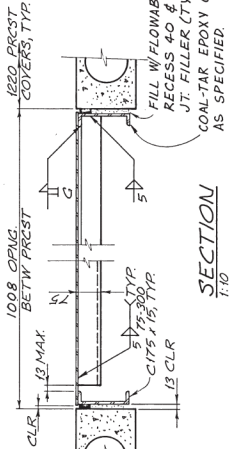
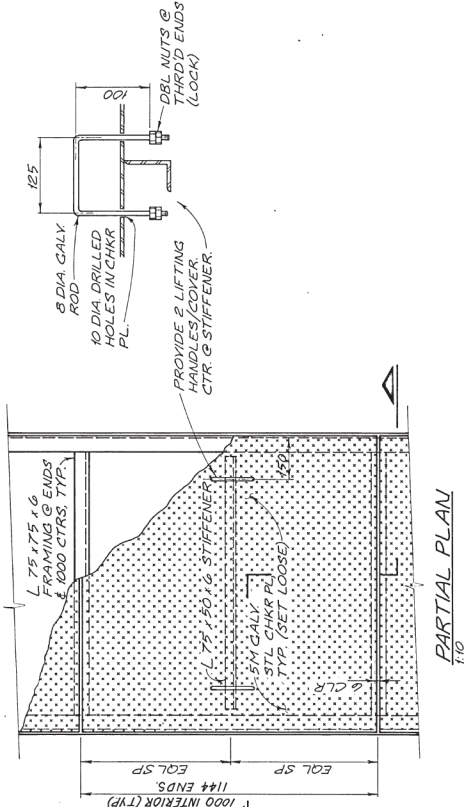
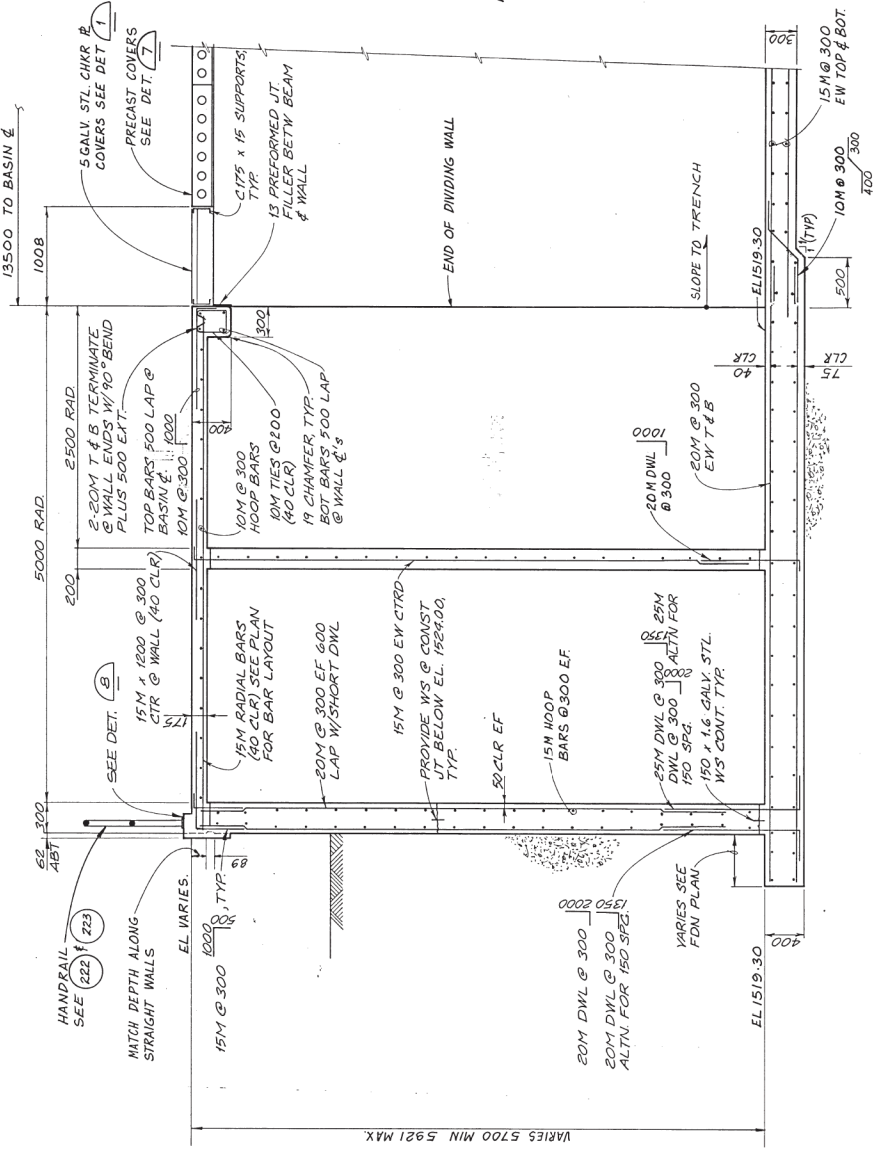
1:30

REVISION / REVISION			
NO.	DATE	DESCRIPTION	BY
1	8/4/96	AS BUILT	PM
2			
3			
4			
5			
6			
7			
8			
9			
10			

Parks Canada		Parks Canada	
Engineering and Architecture		Génie et Architecture	
CH2M HILL		CANADA LTD.	
Alberta		Alberta	
A	DETAIL NO.	A	DETAIL NO.
B	LOCATION DWG. NO.	B	SUR. DESIGN NO.
C	DRAWING NO.	C	DESIGN NO.

PROJECT TITLE / TITRE DU PROJET	
LAKE LOUISE	
SEWAGE TREATMENT PLANT	
DRAWING TITLE / TITRE DU DESSIN	
AERATION BASINS	
STRUCTURAL PLANS & SECTIONS	

DESIGNED BY	J. K. S.	CHECKED BY	S. SCHLAGELMILCH
DRAWN BY	R. C.	APPROVED BY	S. LACROIX
DATE	1981 DEC	SCALE	AS SHOWN
PROJECT / ASSET NO.	AC14221.1A1	NO. OF SHEETS	1
REF. NO. - DRAWING NO.	11-1881/1853/19 OF 53	NO. OF REF. NO. DESIGN	SM-4



NOTE:
FOR END COVERS W/ OPENINGS FOR
GRAB RAILS PROVIDE 2" STIFFENER
ANGLES 1 @ 13 CLR FROM OPENINGS.

NOTE:
FILL W/ FLOWABLE NON-SHRINK GROUT,
RECESS 40 & FILL RECESS W/ POURABLE
JT. FILLER (TYP.)
COAT-TAR EPOXY COATING ON CHANNELS & ANGLES
AS SPECIFIED.

SECTION (B)
1:30
SM-4

SECTION (C)
1:30
SM-4

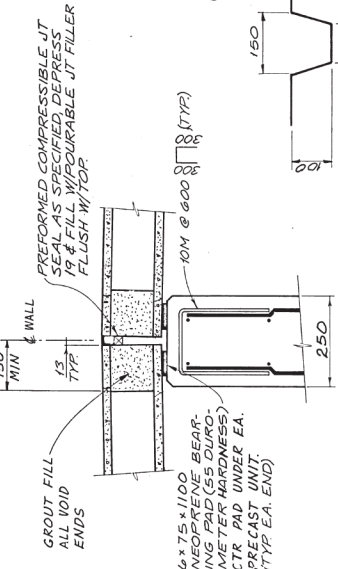
CHKR PL DETAILS (1)
SM-4
SM-9
SM-13

CHKR PL DETAILS (1)

1. VERIFY ALL DIMENSIONS WITH ASTERISK (*) WITH MECHANICAL PLANS.
2. DESIGN LIVE LOAD FOR POURED-IN-PLACE COVER SLAB IS 4.8 kN/m².
- PRECAST COVER NOTES (AERATION BASIN & CHLORINE CONTACT BASIN)
1. DESIGN CONCRETE STRENGTH AT 28 DAYS SHALL BE 34.5 MPa.
2. CONCRETE STRENGTH AT RELEASE SHALL BE 27.5 MPa.
3. PRECAST MANUFACTURER SHALL DESIGN THE PRECAST COVERS FOR THE FOLLOWING LOADS:
- DEAD: ACTUAL + 0.5 kN/m².
- LIVE: 3.0 kN/m².
- IN ADDITION THE PRECAST COVERS SHALL BE DESIGNED FOR ALL LOADS RESULTING FROM FABRICATION, TRANSPORTATION, HANDLING AND ERECTION.

AERATION BASIN NOTES

4. BOTTOM FIBER TENSION STRESSES UNDER MAXIMUM SERVICE LOADS SHALL BE GREATER THAN OR EQUAL TO ZERO.
5. THE CONTRACTOR SHALL COORDINATE WITH THE PRECAST MANUFACTURER THE LOCATION OF ALL KNOCK-OUTS AND DRILLED OPENINGS THROUGH THE PRECAST COVERS.
6. COVER ON PRESTRESSING STRANDS SHALL BE 38 MINIMUM.
7. THE TOP SURFACE OF PRECAST COVERS SHALL BE BROOMED FINISH PERPENDICULAR TO SPAN.
8. PRECAST MANUFACTURER SHALL DESIGN FOR, AND PROVIDE ADDITIONAL STRANDS AS REQUIRED, FOR ALL PENETRATIONS THROUGH PRECAST WHERE TYPICAL STRANDS WOULD BE CUT.

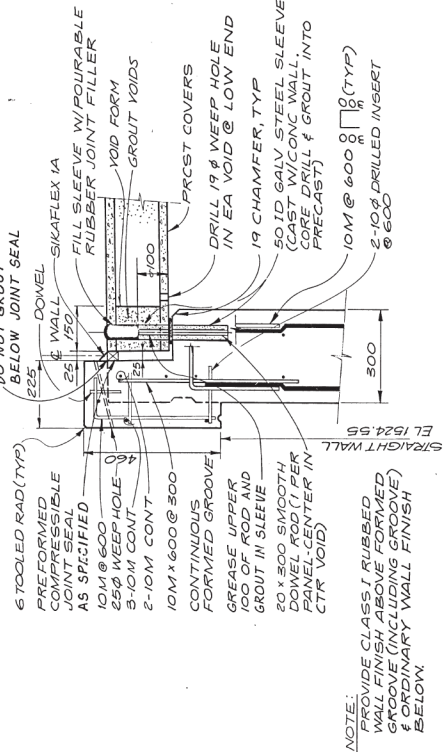


DETAIL (2)
1:10
SM-4

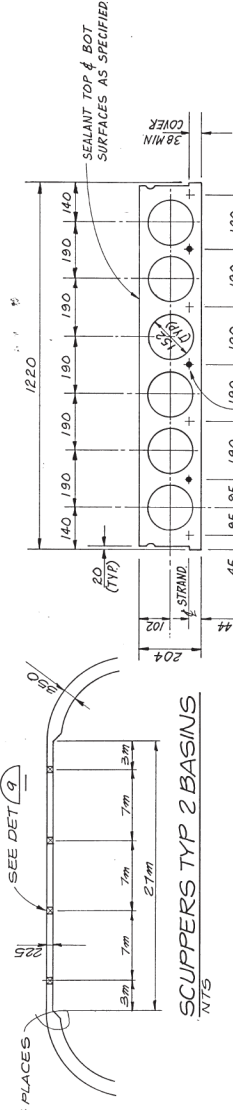
DETAIL (4)
1:10
SM-4

DETAIL (9)
1:75
(TYP 8 PLACES)

DETAIL (6)
1:10
SM-4



DETAIL (3)
1:10
SM-4



DETAIL (7)
1:10
SM-4
SM-13

DETAIL (8)
1:10
TANK ENDS

DETAIL (9)
1:75
(TYP 8 PLACES)

DETAIL (6)
1:10
SM-4

DETAIL (7)
1:10
SM-4
SM-13

DETAIL (8)
1:10
TANK ENDS

DETAIL (9)
1:75
(TYP 8 PLACES)

DETAIL (6)
1:10
SM-4

DETAIL (7)
1:10
SM-4
SM-13

DETAIL (8)
1:10
TANK ENDS

DETAIL (9)
1:75
(TYP 8 PLACES)

DETAIL (6)
1:10
SM-4

DETAIL (7)
1:10
SM-4
SM-13

DETAIL (8)
1:10
TANK ENDS

DETAIL (9)
1:75
(TYP 8 PLACES)

DETAIL (6)
1:10
SM-4

DETAIL (7)
1:10
SM-4
SM-13

DETAIL (8)
1:10
TANK ENDS

DETAIL (9)
1:75
(TYP 8 PLACES)

DETAIL (6)
1:10
SM-4

DETAIL (7)
1:10
SM-4
SM-13

DETAIL (8)
1:10
TANK ENDS

DETAIL (9)
1:75
(TYP 8 PLACES)

DETAIL (6)
1:10
SM-4

DETAIL (7)
1:10
SM-4
SM-13

DETAIL (8)
1:10
TANK ENDS

DETAIL (9)
1:75
(TYP 8 PLACES)

DETAIL (6)
1:10
SM-4

DETAIL (7)
1:10
SM-4
SM-13

DETAIL (8)
1:10
TANK ENDS

DETAIL (9)
1:75
(TYP 8 PLACES)

DETAIL (6)
1:10
SM-4

DETAIL (7)
1:10
SM-4
SM-13

DETAIL (8)
1:10
TANK ENDS

DETAIL (9)
1:75
(TYP 8 PLACES)

DETAIL (6)
1:10
SM-4

DETAIL (7)
1:10
SM-4
SM-13

DETAIL (8)
1:10
TANK ENDS

DETAIL (9)
1:75
(TYP 8 PLACES)

DETAIL (6)
1:10
SM-4

DETAIL (7)
1:10
SM-4
SM-13

DETAIL (8)
1:10
TANK ENDS

DETAIL (9)
1:75
(TYP 8 PLACES)

DETAIL (6)
1:10
SM-4

DETAIL (7)
1:10
SM-4
SM-13

DETAIL (8)
1:10
TANK ENDS

DETAIL (9)
1:75
(TYP 8 PLACES)

DETAIL (6)
1:10
SM-4

DETAIL (7)
1:10
SM-4
SM-13

DETAIL (8)
1:10
TANK ENDS

DETAIL (9)
1:75
(TYP 8 PLACES)

DETAIL (6)
1:10
SM-4

DETAIL (7)
1:10
SM-4
SM-13

DETAIL (8)
1:10
TANK ENDS

DETAIL (9)
1:75
(TYP 8 PLACES)

DETAIL (6)
1:10
SM-4

DETAIL (7)
1:10
SM-4
SM-13

DETAIL (8)
1:10
TANK ENDS

DETAIL (9)
1:75
(TYP 8 PLACES)

DETAIL (6)
1:10
SM-4

DETAIL (7)
1:10
SM-4
SM-13

DETAIL (8)
1:10
TANK ENDS

DETAIL (9)
1:75
(TYP 8 PLACES)

DETAIL (6)
1:10
SM-4

DETAIL (7)
1:10
SM-4
SM-13

DETAIL (8)
1:10
TANK ENDS

DETAIL (9)
1:75
(TYP 8 PLACES)

DETAIL (6)
1:10
SM-4

DETAIL (7)
1:10
SM-4
SM-13

DETAIL (8)
1:10
TANK ENDS

DETAIL (9)
1:75
(TYP 8 PLACES)

DETAIL (6)
1:10
SM-4

DETAIL (7)
1:10
SM-4
SM-13

DETAIL (8)
1:10
TANK ENDS

DETAIL (9)
1:75
(TYP 8 PLACES)

DETAIL (6)
1:10
SM-4

DETAIL (7)
1:10
SM-4
SM-13

DETAIL (8)
1:10
TANK ENDS

DETAIL (9)
1:75
(TYP 8 PLACES)

DETAIL (6)
1:10
SM-4

DETAIL (7)
1:10
SM-4
SM-13

DETAIL (8)
1:10
TANK ENDS

DETAIL (9)
1:75
(TYP 8 PLACES)

DETAIL (6)
1:10
SM-4

DETAIL (7)
1:10
SM-4
SM-13

DETAIL (8)
1:10
TANK ENDS

DETAIL (9)
1:75
(TYP 8 PLACES)

DETAIL (6)
1:10
SM-4

DETAIL (7)
1:10
SM-4
SM-13

DETAIL (8)
1:10
TANK ENDS

DETAIL (9)
1:75
(TYP 8 PLACES)

DETAIL (6)
1:10
SM-4

DETAIL (7)
1:10
SM-4
SM-13

DETAIL (8)
1:10
TANK ENDS

DETAIL (9)
1:75
(TYP 8 PLACES)

DETAIL (6)
1:10
SM-4

DETAIL (7)
1:10
SM-4
SM-13

DETAIL (8)
1:10
TANK ENDS

DETAIL (9)
1:75
(TYP 8 PLACES)

DETAIL (6)
1:10
SM-4

DETAIL (7)
1:10
SM-4
SM-13

DETAIL (8)
1:10
TANK ENDS

DETAIL (9)
1:75
(TYP 8 PLACES)

DETAIL (6)
1:10
SM-4

DETAIL (7)
1:10
SM-4
SM-13

DETAIL (8)
1:10
TANK ENDS

DETAIL (9)
1:75
(TYP 8 PLACES)

DETAIL (6)
1:10
SM-4

DETAIL (7)
1:10
SM-4
SM-13

DETAIL (8)
1:10
TANK ENDS

DETAIL (9)
1:75
(TYP 8 PLACES)

DETAIL (6)
1:10
SM-4

DETAIL (7)
1:10
SM-4
SM-13

DETAIL (8)
1:10
TANK ENDS

DETAIL (9)
1:75
(TYP 8 PLACES)

DETAIL (6)
1:10
SM-4

DETAIL (7)
1:10
SM-4
SM-13

DETAIL (8)
1:10
TANK ENDS

DETAIL (9)
1:75
(TYP 8 PLACES)

DETAIL (6)
1:10
SM-4

DETAIL (7)
1:10
SM-4
SM-13

DETAIL (8)
1:10
TANK ENDS

DETAIL (9)
1:75
(TYP 8 PLACES)

DETAIL (6)
1:10
SM-4

DETAIL (7)
1:10
SM-4
SM-13

DETAIL (8)
1:10
TANK ENDS

DETAIL (9)
1:75
(TYP 8 PLACES)

DETAIL (6)
1:10
SM-4

DETAIL (7)
1:10
SM-4
SM-13

DETAIL (8)
1:10
TANK ENDS

DETAIL (9)
1:75
(TYP 8 PLACES)

DETAIL (6)
1:10
SM-4

DETAIL (7)
1:10
SM-4
SM-13

DETAIL (8)
1:10
TANK ENDS

DETAIL (9)
1:75
(TYP 8 PLACES)

DETAIL (6)
1:10
SM-4

DETAIL (7)
1:10
SM-4
SM-13

DETAIL (8)
1:10
TANK ENDS

DETAIL (9)
1:75
(TYP 8 PLACES)

DETAIL (6)
1:10
SM-4

DETAIL (7)
1:10
SM-4
SM-13

DETAIL (8)
1:10
TANK ENDS

DETAIL (9)
1:75
(TYP 8 PLACES)

DETAIL (6)
1:10
SM-4

DETAIL (7)
1:10
SM-4
SM-13

DETAIL (8)
1:10
TANK ENDS

DETAIL (9)
1:75
(TYP 8 PLACES)

DETAIL (6)
1:10
SM-4

DETAIL (7)
1:10
SM-4
SM-13

DETAIL (8)
1:10
TANK ENDS

DETAIL (9)
1:75
(TYP 8 PLACES)

DETAIL (6)
1:10
SM-4

DETAIL (7)
1:10
SM-4
SM-13

DETAIL (8)
1:10
TANK ENDS

DETAIL (9)
1:75
(TYP 8 PLACES)

DETAIL (6)
1:10
SM-4

DETAIL (7)
1:10
SM-4
SM-13

DETAIL (8)
1:10
TANK ENDS

DETAIL (9)
1:75
(TYP 8 PLACES)

DETAIL (6)
1:10
SM-4

DETAIL (7)
1:10
SM-4
SM-13

DETAIL (8)
1:10
TANK ENDS

DETAIL (9)
1:75
(TYP 8 PLACES)

DETAIL (6)
1:10
SM-4

DETAIL (7)
1:10
SM-4
SM-13

DETAIL (8)
1:10
TANK ENDS

DETAIL (9)
1:75
(TYP 8 PLACES)

DETAIL (6)
1:10
SM-4

DETAIL (7)
1:10
SM-4
SM-13

DETAIL (8)
1:10
TANK ENDS

DETAIL (9)
1:75
(TYP 8 PLACES)

DETAIL (6)
1:10
SM-4

DETAIL (7)
1:10
SM-4
SM-13

DETAIL (8)
1:10
TANK ENDS

DETAIL (9)
1:75
(TYP 8 PLACES)

DETAIL (6)
1:10
SM-4

DETAIL (7)
1:10
SM-4
SM-13

DETAIL (8)
1:10
TANK ENDS

DETAIL (9)
1:75
(TYP 8 PLACES)

DETAIL (6)
1:10
SM-4

DETAIL (7)
1:10
SM-4
SM-13

DETAIL (8)
1:10
TANK ENDS

DETAIL (9)
1:75
(TYP 8 PLACES)

DETAIL (6)
1:10
SM-4

DETAIL (7)
1:10
SM-4
SM-13

DETAIL (8)
1:10
TANK ENDS

DETAIL (9)
1:75
(TYP 8 PLACES)

DETAIL (6)
1:10
SM-4

DETAIL (7)
1:10
SM-4
SM-13

DETAIL (8)
1:10
TANK ENDS

DETAIL (9)
1:75
(TYP 8 PLACES)

DETAIL (6)
1:10
SM-4

DETAIL (7)
1:10
SM-4
SM-13

DETAIL (8)
1:10
TANK ENDS

DETAIL (9)
1:75
(TYP 8 PLACES)

DETAIL (6)
1:10
SM-4

DETAIL (7)
1:10
SM-4
SM-13

DETAIL (8)
1:10
TANK ENDS

DETAIL (9)
1:75
(TYP 8 PLACES)

DETAIL (6)
1:10
SM-4

DETAIL (7)
1:10
SM-4
SM-13

DETAIL (8)
1:10
TANK ENDS

DETAIL (9)
1:75
(TYP 8 PLACES)

DETAIL (6)
1:10
SM-4

DETAIL (7)
1:10
SM-4
SM-13

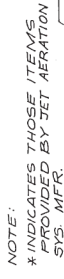
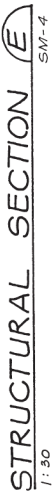
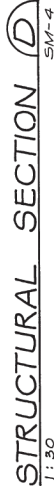
DETAIL (8)
1:10
TANK ENDS

DETAIL (9)
1:75
(TYP 8 PLACES)

DETAIL (6)
1:10
SM-4


DETAIL (7)
1:10
SM-4
SM-13

DETAIL (8)
1:10
TANK ENDS




Parks Canada
Parcs Canada
Engineering and Architecture
Gente et architecture

Calgary, Alberta

	A DETAIL NO.	A DÉTAIL NO.
	B LOCATION DWG. NO.	B SUR DESSIN NO.
	C DRAWING NO.	C DESSIN NO.

DRAWING TITLE / TITRE DU DESSIN
AERATION BASINS -
MECHANICAL PLAN,
SECTION A - DETAIL C

PROJECT/ASSET NO. NO DU PROJET/BIEN	AC14227,A1
REF. NO. - DRAWING NO. NO DE REF. - NO DESSIN	N.W.B81/R53/21 OF 53
SM - 6	