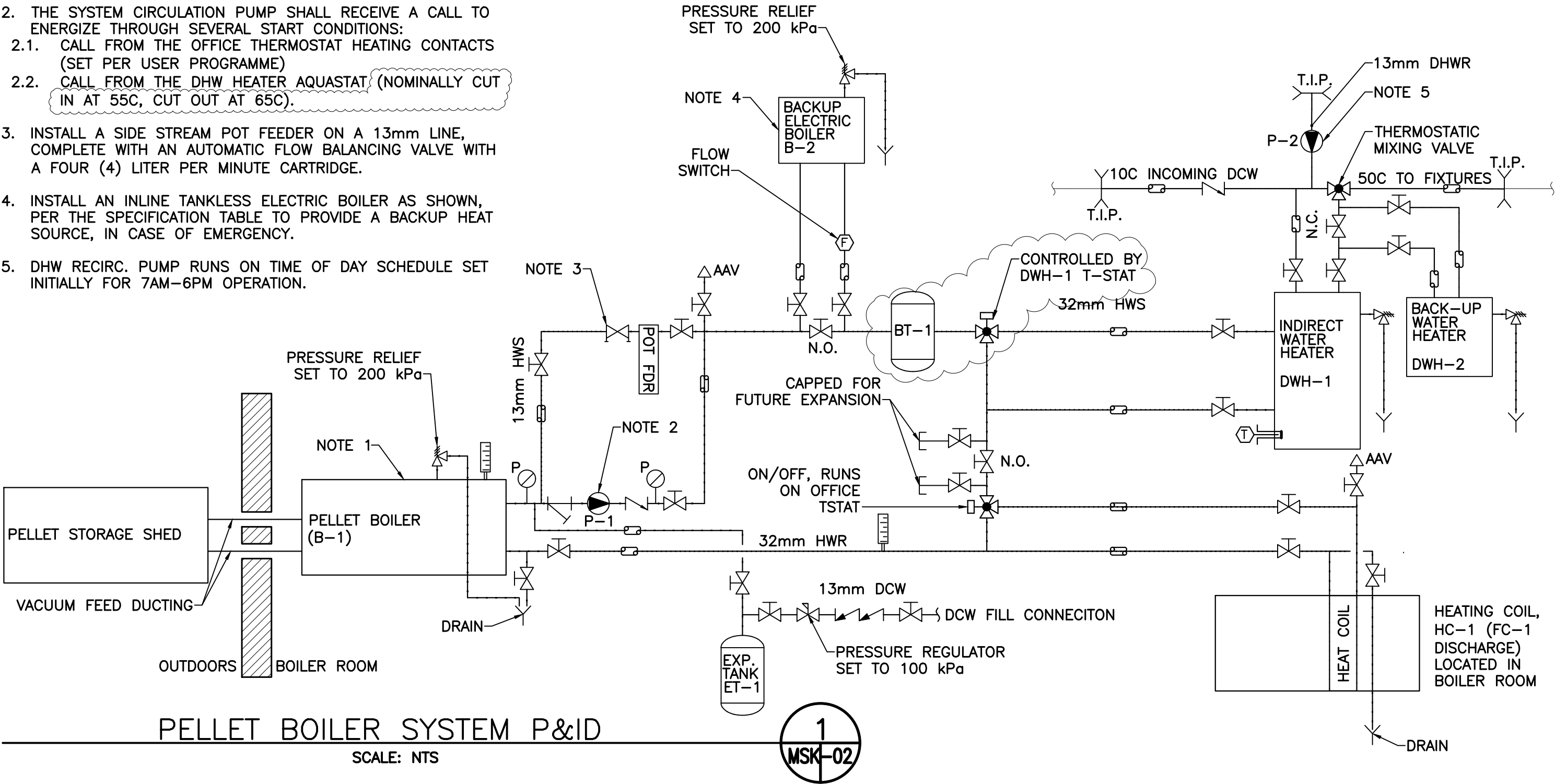


P&ID NOTES

1. BOILER TO UTILIZE ONBOARD AQUASTAT FOR FIRING CONTROL. UPON INSTALLATION AND INITIAL SETUP THE UNIT SHALL BE CONFIGURED TO CUT-IN AT A WATER TEMPERATURE CUT IN OF 55C, CUTTING OUT AT 85C.
2. THE SYSTEM CIRCULATION PUMP SHALL RECEIVE A CALL TO ENERGIZE THROUGH SEVERAL START CONDITIONS:

2.1. CALL FROM THE OFFICE THERMOSTAT HEATING CONTACTS (SET PER USER PROGRAMME)

2.2. CALL FROM THE DHW HEATER AQUASTAT (NOMINALLY CUT IN AT 55C, CUT OUT AT 65C).
3. INSTALL A SIDE STREAM POT FEEDER ON A 13mm LINE, COMPLETE WITH AN AUTOMATIC FLOW BALANCING VALVE WITH A FOUR (4) LITER PER MINUTE CARTRIDGE.
4. INSTALL AN INLINE TANKLESS ELECTRIC BOILER AS SHOWN, PER THE SPECIFICATION TABLE TO PROVIDE A BACKUP HEAT SOURCE, IN CASE OF EMERGENCY.
5. DHW RECIRC. PUMP RUNS ON TIME OF DAY SCHEDULE SET INITIALLY FOR 7AM-6PM OPERATION.



PELLET BOILER SYSTEM P&ID  
SCALE: NTS

1  
MSK-02