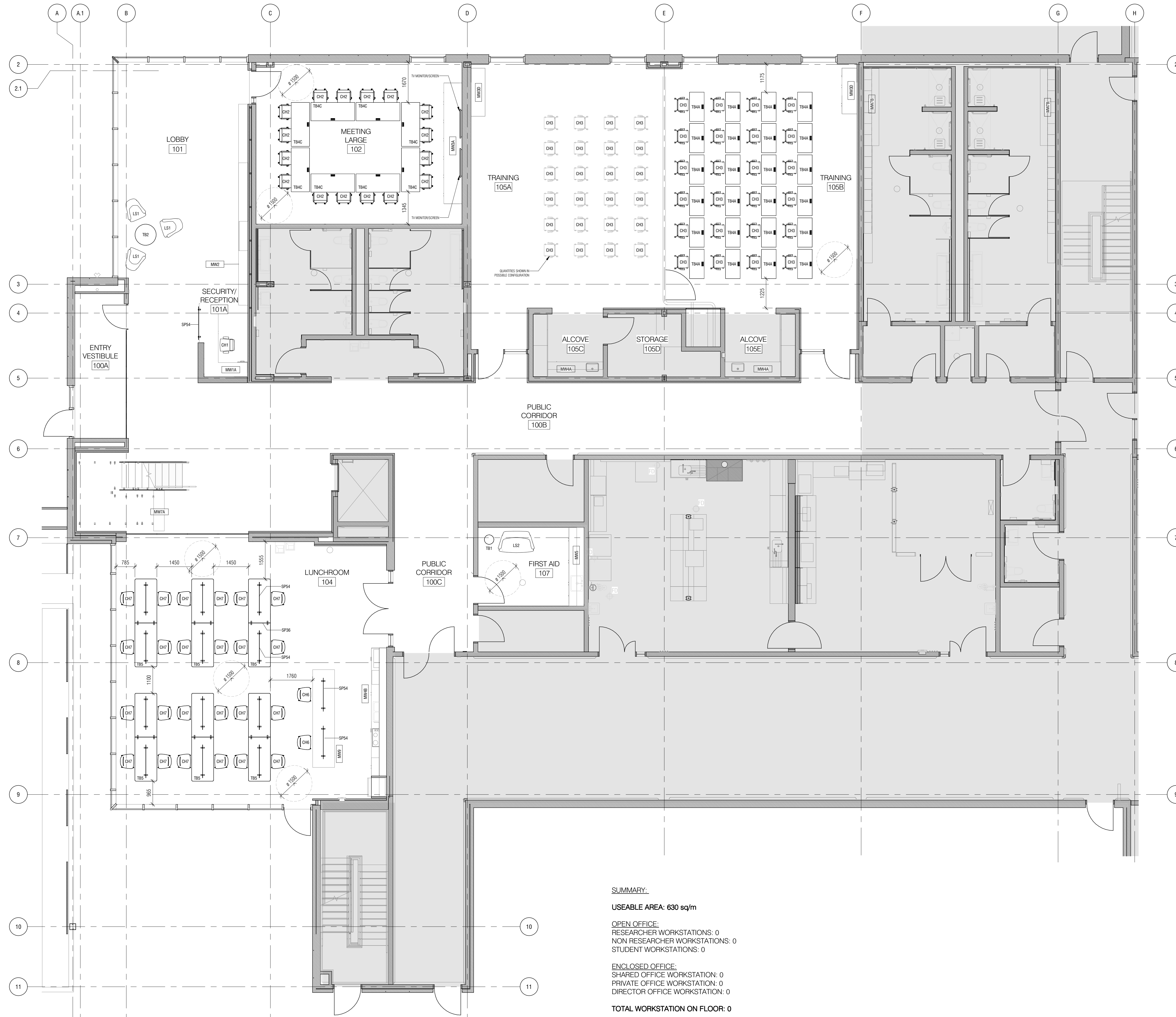


CONTRACTOR MUST CHECK & VERIFY ALL DIMENSIONS ON THE JOB.

DO NOT SCALE DRAWINGS.
ALL DIMENSIONS, SPECIFICATIONS AND RELATED DOCUMENTS ARE THE COPYRIGHT PROPERTY OF THE ARCHITECT AND MUST BE RETURNED UPON REQUEST. REPRODUCTION OF DRAWINGS, SPECIFICATIONS AND RELATED DOCUMENTS IN WHOLE OR IN PART IS STRICTLY PROHIBITED WITHOUT THE WRITTEN PERMISSION OF THE ARCHITECT.
THIS DRAWING IS NOT TO BE USED FOR CONSTRUCTION UNLESS SIGNED BY THE ARCHITECT.



SUMMARY:
USEABLE AREA: 630 sq/m
OPEN OFFICE:
 RESEARCHER WORKSTATIONS: 0
 NON RESEARCHER WORKSTATIONS: 0
 STUDENT WORKSTATIONS: 0
ENCLOSED OFFICE:
 SHARED OFFICE WORKSTATION: 0
 PRIVATE OFFICE WORKSTATION: 0
 DIRECTOR OFFICE WORKSTATION: 0
TOTAL WORKSTATION ON FLOOR: 0
SHARED SPACE:
 SMALL MEETING ROOM: 0
 MEDIUM MEETING ROOM: 0
 10 PERSON MEETING ROOM: 0
 LARGE MEETING ROOM: 1
 KITCHENETTE: 1
 QUIET ROOM: 0
 COLLABORATION SPACE: 0
 FIRST AID ROOM: 1

LVL 1 WORKSPACE FURNITURE SCHEDULE						
ITEM TAG	ITEM TYPE	ITEM DESCRIPTION	Specification Information	CATEGORY	GS/CJIC Code	COUNT
TB1	Side table	18" diameter round side table, 14-21" h with pedestal base and laminate surface.		CAT 6 - COLLABORATIVE TABLES	(line 321) 6C21VWAPL1800XJNX	1
TB2	Coffee table	36" diameter round coffee table, 14-21" h with 4 leg base and laminate top.		CAT 6 - COLLABORATIVE TABLES	(line 131) 6C21VWRL13600JNX	1
CH6	Kitchenette stool	Mid back counter-height stool with plastic shell, armrest and sled base.		CAT 6 - KITCHENETTE CHAIRS	(line 72) 6K65D9w4Y15000JNX	24
CH7	Kitchen chair	Mid back side chair with plastic shell, armrest, sled base and stackable.		CAT 6 - KITCHENETTE CHAIRS	(line 95) 6K65D9w4Y15000JNX	24
TB4A	Training table	24" x 48" flip top training table with C-leg support, laminate top, in-surface power with built-in cable management, modesty panel and locking casters.	White Oak Wood Laminate Table Top	CAT 6 - MEETING/TRAINING ROOM TABLES	(line 125) 6M97FREC24L48WYY	24
TB4C	Large Meeting Room table	130" x 72" flip top table with C-leg support, laminate top, in-surface power and built-in cable management, modesty panel and locking casters.	Solid White Laminate Table Top	CAT 6 - MEETING/TRAINING ROOM TABLES	(line 135) 6M97FREC30L72WYY	8
LS1	Lounge armchair	Mid-high back lounge armchair, fully upholstered with swivel base.	Upholstery to match board blue colour	CAT 6 - SOFT SEATING	(line 98) 6S6D9W0000000000	3
LS2	2 seat sofa	51-72" wide 2-seat sofa, fully upholstered with armrests.		CAT 6 - SOFT SEATING	(line 101) 6S6D9W0000000000	1
SP36	Privacy Screen	36" w privacy screen, work-surface mounted.	Clear acrylic	NSA		6
SP54	Privacy Screen	54" w privacy screen, work-surface mounted.	Clear acrylic	NSA		15
TB5	Lunch table	30" x 144" laminate top table.	Solid White laminate Table Top	NSA		6

LVL 1 OFFICE SEATING SCHEDULE						
ITEM TAG	ITEM TYPE	ITEM DESCRIPTION	Specification Information	CATEGORY	GS/CJIC Code	COUNT
CH1	Desk chair	Ergonomic high back task chair with armrests, casters and optional headrest.		Rotary Chair (up to 275 lbs)		1
CH2	Meeting chair	Mid-high back task chair, fully upholstered with armrests and casters.		Rotary Chair (up to 275 lbs)		16
CH3	Training chair	Mid back task chair with upholstered seat pad, plastic shell, armrest, casters and stackable.		Side Chair		48

No.	Description	Date

Number TEN Architectural Group
Diamond and Schmitt Architects Inc
 Architects in Joint Venture

384 Adelaide Street West, Suite 100, Toronto, Canada M5V 1R7
 Tel: 416 862 8800 Fax: 416 862 5508 info@dsai.ca www.dsai.ca
 310-115 Barnaby Avenue, Winnipeg Manitoba, R3B 0R3
 Tel: 204 942 0981 winnipeg@numberten.com www.numberten.com

Project: **NRC AMP WINNIPEG**

RED FIFE ROAD, WINNIPEG MANITOBA

Designed by: _____
 Drawn by: _____
 Approved by: _____
 Project Manager: _____
 Drawing Title: _____

LVL 1 FURNITURE PLAN

Scale: 1 : 75 Date: _____
 Project No./No. du projet: _____
 Drawing No./No. du dessin: _____
 Revision No.: _____
NRC-0300W
R.076945.001
200007 NRC
AMP
WINNIPEG
ID101A