

CONTRACTOR MUST CHECK & VERIFY ALL DIMENSIONS ON THE JOB.
DO NOT SCALE DRAWINGS.
ALL DIMENSIONS SPECIFICATIONS AND RELATED DOCUMENTS ARE THE COPYRIGHT PROPERTY OF THE ARCHITECT AND MUST BE RETURNED UPON REQUEST. REPRODUCTION OF DRAWINGS, SPECIFICATIONS AND RELATED DOCUMENTS IN PART OR WHOLE IS FORBIDDEN WITHOUT THE WRITTEN PERMISSION OF THE ARCHITECT.
THIS DRAWING IS NOT TO BE USED FOR CONSTRUCTION UNLESS SIGNED BY THE ARCHITECT.

SYSTEMS FURNITURE PLAN LEGEND

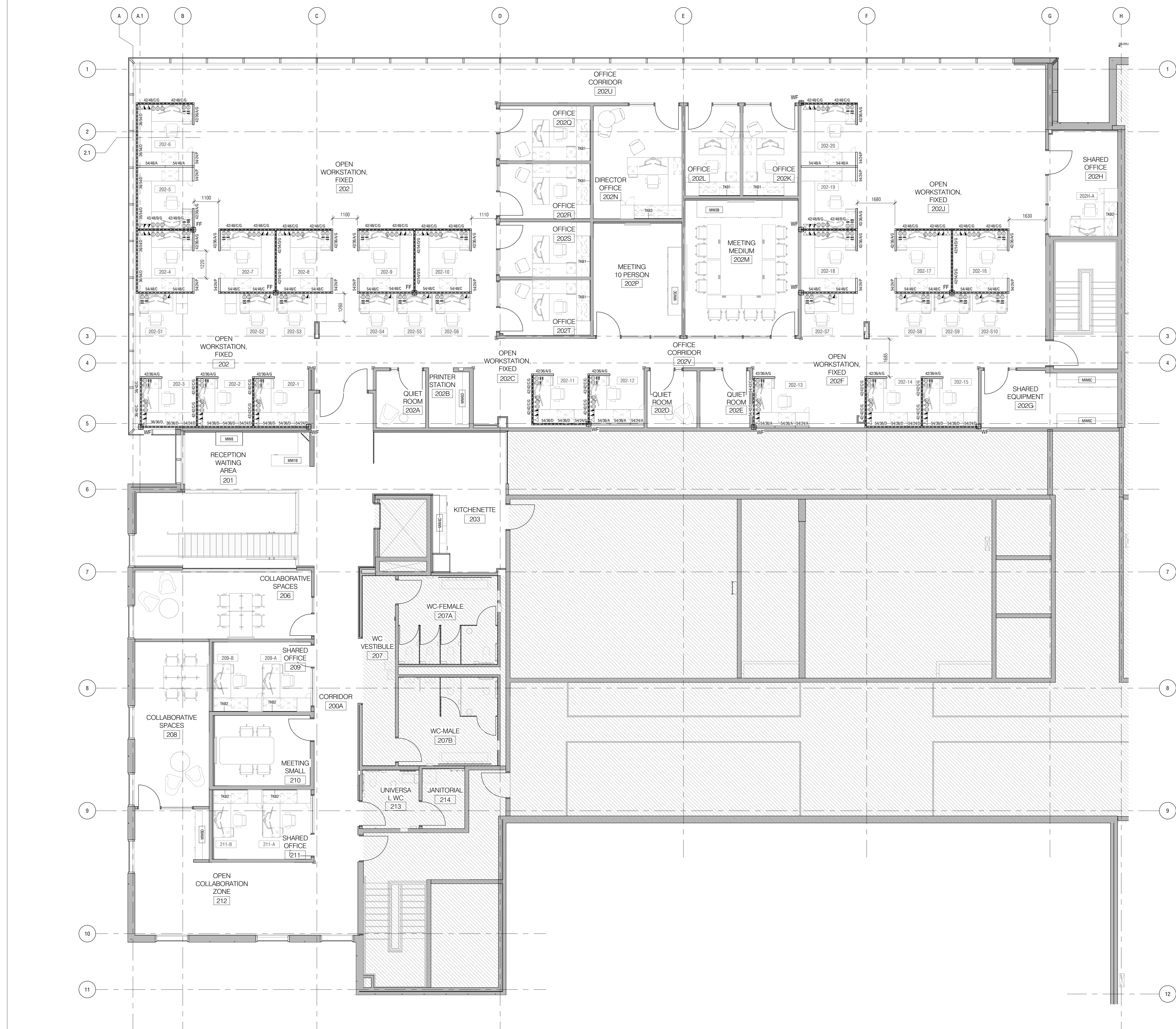
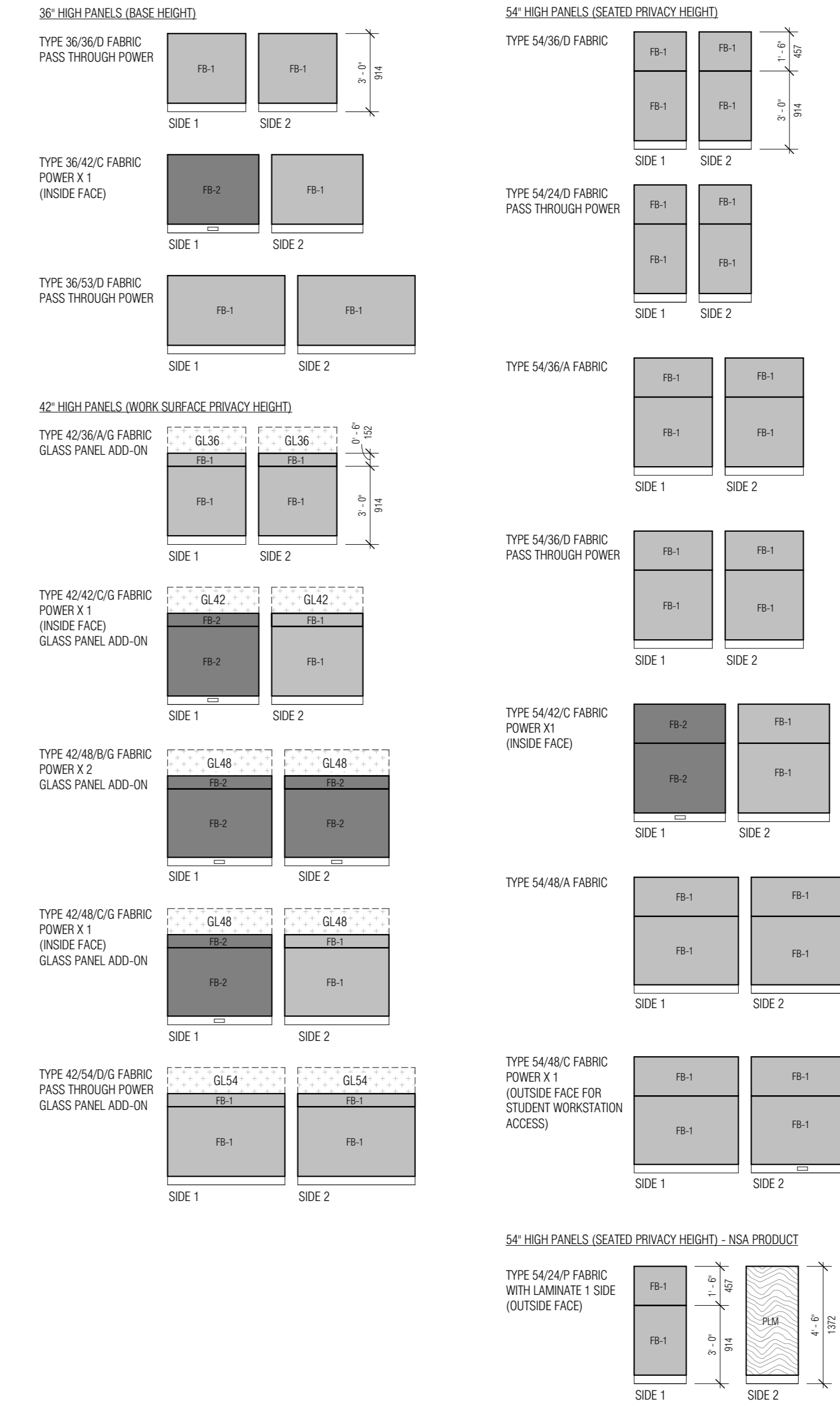
- POWERED FLOOR - INDICATED BY DASHED LINE
- FF POWER FEED FLOOR LOCATION; BASE POWER IN WHIP TO BE PROVIDED BY FURNITURE SUPPLIER
- WF POWER FEED WALL LOCATION; BASE POWER IN WHIP TO BE PROVIDED BY FURNITURE SUPPLIER
- DUPLX TELECOMMUNICATION DATA
- DUPLX ABOVE WORK SURFACE IN POWER MODULE DESK ACCESSORY
- USB ABOVE WORK SURFACE IN POWER MODULE DESK ACCESSORY

NOTE: ALL POWER, TELECOMMUNICATION AND DATA TO BE LOCATED BELOW WORK SURFACE UNLESS OTHERWISE NOTED

TAG	TYPE	DESCRIPTION	GWJC CODE	QTY
36/26D	36" x 36" Pass Through Power	Non-Segmented panel; Fabric 1 on both faces; Pass through power only.		2
36/42C	36" x 42" Power x1	Non-Segmented Panel; Fabric 1 on inside face and Fabric 2 on inside face. Two base level power receptacles on inside face.		7
36/54D	36" x 54" Pass Through Power	Non-Segmented panel with Fabric 1 on both faces; Pass through power only.		6
42/36A/G	42" x 36" Non-Powered with Glass Panel Add-On	Segmented Panel with Fabric 1 on upper and lower element of both faces and 12" Panel mounted privacy screen in clear glass. Non-Powered.		20
42/42C/G	42" x 42" Power x1 with Glass Panel Add-On	Segmented Panel with Fabric 1 on upper and lower element of outside face and Fabric 2 on upper and lower element of inside face. 12" Panel mounted privacy screen in clear glass. One base level power receptacle on inside face.		12
42/48B/G	42" x 48" Power x2 with Glass Panel Add-On	Segmented panel with Fabric 2 on lower and upper element of both faces. 12" Panel mounted privacy screen in clear glass. Two base level power receptacles on both sides of the panel to back to back workstations.		4
42/48C/G	42" x 48" Power x1 with Glass Panel Add-On	Segmented panel with Fabric 1 on lower and upper element of outside face and Fabric 2 on lower and upper element of inside face. 12" Panel mounted privacy screen in clear glass. One base level power receptacle on inside face.		16
42/54D/G	42" x 54" Pass Through Power with Glass Panel Add-On	Segmented panel with Fabric 1 on lower and upper element of both faces. 12" Panel Mounted Privacy Screen in Clear Glass. Pass through power only.		6
54/24A	54" x 24" Non-Powered	Segmented Panel with Fabric 1 on upper and lower element of both faces. Non-Powered.		2
54/24B	54" x 24" Pass Through Power	Segmented Panel with Fabric 1 on upper and lower element of both faces. Pass through power only.		6
54/24P	54" x 24" Non-Powered with Wood Laminate Finish	Segmented Panel with Fabric 1 on upper and lower element of inside face. Non-Powered.		12
54/36A	54" x 36" Non-Powered	Segmented Panel with Fabric 1 on upper and lower element of both faces. Non-Powered.		4
54/36D	54" x 36" Pass Through Power	Segmented panel with Fabric 1 on upper and lower element of both faces. Pass through power only.		10
54/42C	54" x 42" Power x1	Segmented Panel with Fabric 1 on upper and lower element of outside face and Fabric 2 on upper and lower element of inside face. One base level power receptacle on inside face.		2
54/48A	54" x 48" Non-Powered	Segmented panel with Fabric 1 on upper and lower elements of both faces. Non-Powered.		4
54/48C	54" x 48" Power x1	Segmented panel with Fabric 1 on upper and lower elements of both faces. One base level power receptacle on outside face for student workstation access.		16
GL36	36" x 12" Glass Panel Add-On	Panel mounted privacy screen add-on. Seamless, clear glazing.	(line 64) 12CP300000_36GL36MM	20
GL42	42" x 12" Glass Panel Add-On	Panel mounted privacy screen add-on. Seamless, clear glazing.	(line 64) 12CP300000_42GL42MM	12
GL54	54" x 12" Glass Panel Add-On	Panel mounted privacy screen add-on. Seamless, clear glazing.	(line 65) 12CP300000_54GL54MM	6
TB1	22x12" Tableboard	Wall mounted fabric tableboard	(line 65A) 12CP300000_54GL54MM	6
TB2	22x40" Tableboard	Wall mounted fabric tableboard		5
TB3	22x84" Tableboard	Wall mounted fabric tableboard		1

SYSTEMS FURNITURE PLAN LEGEND

- FIRST NUMBER INDICATES PANEL HEIGHT; SECOND NUMBER INDICATES PANEL WIDTH; THIRD LETTER INDICATES PANEL TYPE; FOURTH LETTER INDICATES ADDITION OF PRIVACY SCREEN ADD-ON; PANEL TYPES ARE:
 - TYPE A: NON-POWERED
 - TYPE B: POWERED X2
 - TYPE C: POWERED X1
 - TYPE D: PASS THROUGH POWER
 - TYPE E: LAMINATE FINISH
- REFER TO GOOD CODE LISTED IN SYSTEM FURNITURE SCHEDULE FOR PRIVACY SCREEN ADD-ON DETAILS.
- EACH WORKSTATION TO HAVE 3 DUPLX, 2 DATA AND 1 TELECOMMUNICATION RECEPTACLE. EACH STUDENT WORKSTATION TO HAVE 1 DUPLX AND 1 DATA.
- PROVIDE KNOCK-OUTS IN EACH PANEL FOR FUTURE FLEXIBILITY.
- PANEL QUANTITIES SHOWN FOR REFERENCE ONLY; FURNITURE SUPPLIER TO CONFIRM ALL QUANTITIES.
- 62" HIGH PANELS INDICATE SEATING PRIVACY HEIGHT PANELS. PANELS MUST BE WITHIN THE RANGE OF 1055mm (42") TO 1219mm (48") INCLUSIVE.
- 72" HIGH PANELS INDICATE SEATING PRIVACY HEIGHT PANELS. PANELS MUST BE WITHIN THE RANGE OF 1270mm (50") TO 1371mm (54") INCLUSIVE.
- ALL PANELS WITH POWER OUTLETS AND PANELS USED FOR PASS THROUGH POWER ADJACENT TO WALL FEEDS TO HAVE FABRIC TILES REMOVED ON ONE SIDE TO ACCOMMODATE WIRE FITTING. ALL WORKSTATIONS WITH CORRESPONDING PANELS LISTED BELOW.



LVL 2 - SYSTEMS FURNITURE PLAN

No.	Description	Date

Number TEN Architectural Group
Diamond and Schmitt Architects Inc
Architects in Joint Venture

384 Adelaide Street West, Suite 100, Toronto, Canada M5V 1R7
Tel: 416 862 8800 Fax: 416 862 5508 info@dsai.ca www.dsai.ca
310-115 Barnatane Avenue, Winnipeg Manitoba, R3B 0R3
Tel: 204 942 0981 winnipeg@numberten.com www.numberten.com

Project: **NRC AMP WINNIPEG**

RED FFE ROAD, WINNIPEG MANITOBA

Designed by: *Clare per*
Drawn by: *Clare per*
Approved by: *Clare per*
Project Manager: *Administrateur de Projets TP500*
Drawing Title: *Titre du dessin*

LVL 2 - SYSTEMS FURNITURE PLAN