

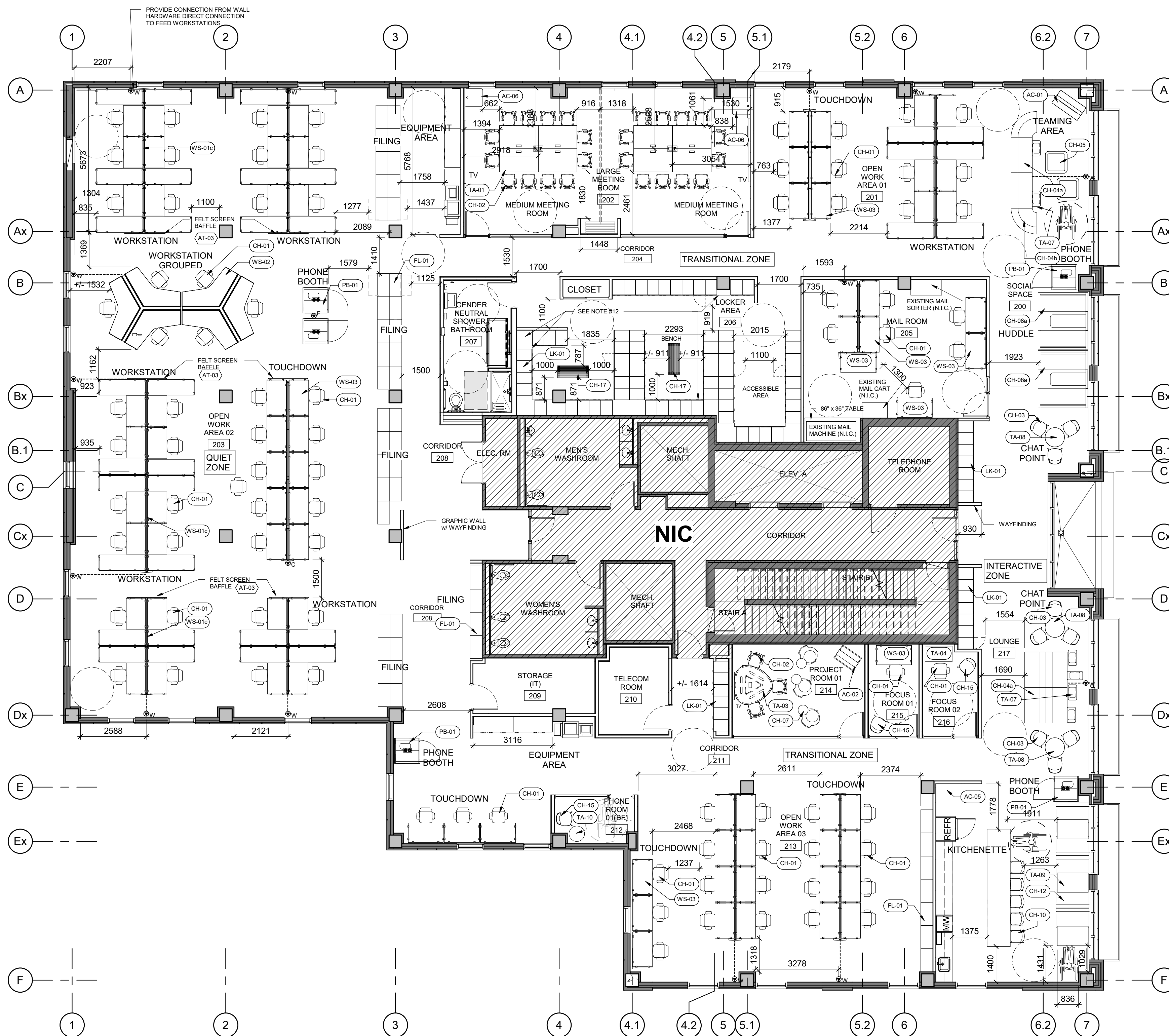
FURNITURE AND POWER & COMMUNICATION PLAN NOTES

- THIS DRAWING IS TO BE USED FOR LAYOUT AND LOCATION PURPOSES ONLY. THIS DRAWING IS TO BE READ IN CONJUNCTION WITH ENGINEER'S DRAWINGS AND SPECIFICATIONS.
- GENERAL CONTRACTOR MUST REPORT ANY DISCREPANCIES BETWEEN CONSULTANT'S DRAWINGS AND INTERIOR DESIGN DRAWINGS TO DESIGNER FOR CLARIFICATION BEFORE PROCEEDING WITH THE WORK.
- ALL RECEPTACLES TO BE MOUNTED AT 400mm AFF UNLESS OTHERWISE NOTED.
- ALL OUTLET BOXES SHALL BE STAGGERED IN PARTITIONS (NOT BACK TO BACK) AS REQUIRED TO ENSURE THAT CONTINUOUS SOUND ATTENUATION BATTS CAN BE INSTALLED WITHOUT INTERRUPTION, WHERE APPLICABLE.
- ALL OUTLETS MOUNTED IN MILLWORK SHALL BE COORDINATED WITH MANUFACTURER AND TO THE REQUIREMENTS OF INTERIOR DESIGN DRAWINGS. REFER TO THE MILLWORK DETAILS FOR EXACT LOCATIONS AND REQUIREMENTS.
- ALL CIRCUITS ARE TO BE PROPERLY LABELED, REFER TO ENGINEER'S DRAWINGS AND SPECIFICATIONS FOR DETAILS.
- UNLESS OTHERWISE INDICATED, EXACT LOCATIONS FOR ALL ELECTRICAL WORK TO BE DETERMINED ON SITE, ELECTRICIAN TO IDENTIFY AND LABEL CIRCUITS ON PANEL.
- PROVIDE ADEQUATE SLACK LENGTH OF VOICE / DATA CABLES WITHIN MILLWORK TO REACH FURTHEST LOCATION POSSIBLE FOR EACH TERMINATION.
- CONTRACTOR SHALL DO ALL DATA / VOICE TERMINATIONS.
- ALL FIRE PULL STATION, CARD READER, PUSH BUTTON LOCATIONS, ETC., SHALL BE TO THE REQUIREMENTS OF BUILDING CODE. REFER TO ARCHITECTURAL & ENGINEER'S DRAWINGS FOR DETAILS & SPECIFICATIONS.
- ALL FLOOR MONUMENTS & CORE DRILL LOCATIONS SHALL BE DONE IN ACCORDANCE TO THE OWNER'S INSTRUCTIONS AND APPROVAL. PROVIDE X-RAY INSPECTIONS TO THE OWNER AS REQUESTED. DESIGNER SHALL APPROVE ALL MONUMENT LOCATIONS PRIOR TO INSTALLATION. REFER ELECTRICAL CONTRACT DOCUMENTS FOR SPECIFICATION OF FLUSH TYPE MONUMENT.
- ALL FURNITURE SUPPLY AND INSTALL BY CLIENT, EXCEPT RECYCLE STATION (AC-05). GENERAL CONTRACTOR SHALL COORDINATE WITH FURNITURE VENDOR FOR EXACT LOCATIONS OF FURNITURE FEED. LOCKERS SUPPLY BY CLIENT AND INSTALL BY GENERAL CONTRACTOR. GC TO PROVIDE LOCKER FILLER PANELS & FLAT TOP CORNER FILLERS TO ASSEMBLE BANKS OF LOCKERS (LK-01) WITH CONCEALED FASTENERS IN LOCKER AREA. GC TO ENSURE LOCKERS ARE DIRECTLY TO WALL STUDS WITH ANCHOR METAL ANGLE. PROVIDE SHOP DRAWINGS AS REQ'D.
- LOCKERS (LK-01) IN PUBLIC CORRIDORS TO BE CONNECT SIDE TO SIDE IN BANKS WITH ASSOCIATED TRIM TO FASTENED TO THE BULKHEAD AND THE TOP OF THE LOCKERS WITH CONCEALED FASTENERS. PROVIDE FILLER PANELS BETWEEN LOCKER FRAMES & WALL AS REQ'D. PROVIDE SHOP DRAWINGS AS REQ'D.

FURNITURE AND POWER & COMMUNICATION PLAN LEGEND

- XX FURNITURE CODE
- PROVIDE CONNECTION FROM WALL OR CEILING HARDWARE DIRECT CONNECTION TO FEED WORKSTATIONS. CONTRACTOR TO COORDINATE POWER REQUIREMENT WITH WORKSTATIONS PRIOR TO START OF WORK. CONFIRM EXACT LOCATION OF FURNITURE FEED PRIOR TO ROUGHING IN
- ON-CARPET WIREWAY
- RECESSED FLOOR BOX FOR POWER & DATA REFER TO ELECTRICAL DWGS FOR DETAILS
- WALL MOUNTED DUPLEX RECEPTACLE (15A-120V)
- WALL MOUNTED DUPLEX RECEPTACLE MOUNTED ABOVE COUNTER (15A-120V)
- WALL MOUNTED GFCI DUPLEX RECEPTACLE MOUNTED ABOVE COUNTER

NOTE: REFER TO ELECTRICAL DRAWINGS FOR MORE INFORMATION



1 2ND FLOOR FURNITURE PLAN
ID103 1: 100

2ND FLOOR FURNITURE SCHEDULE				
Furniture Code	Furniture Type	Room No	Room Name	Quantity
AC-01	MOBILE MEDIATEBOARD & WHITEBOARD	200	SOCIAL SPACE	1
AC-02	MOBILE WHITEBOARD	214	PROJECT ROOM 01	1
AC-05	RECYCLE STATION (BY GC) HAWORTH - X SERIES RECYCLING STATION "JRPY-3948-SJAN,TR_AK"	217	LOUNGE	1
AC-06	MOBILE FURNITURE RACK (BY PSPC)	202	LARGE MEETING ROOM	2
CH-01	TASK CHAIR (BY PSPC)	201	OPEN WORK AREA 01	12
CH-01	TASK CHAIR (BY PSPC)	203	OPEN WORK AREA 02	45
CH-01	TASK CHAIR (BY PSPC)	205	MAIL ROOM	7
CH-01	TASK CHAIR (BY PSPC)	213	OPEN WORK AREA 03	22
CH-01	TASK CHAIR (BY PSPC)	215	FOCUS ROOM 01	1
CH-01	TASK CHAIR (BY PSPC)	216	FOCUS ROOM 02	1
CH-02	TASK CHAIR	202	LARGE MEETING ROOM	24
CH-02	TASK CHAIR	214	PROJECT ROOM 01	3
CH-03	SIDE CHAIR	200	SOCIAL SPACE	3
CH-03	SIDE CHAIR	217	LOUNGE	6
CH-04a	LOUNGE SEATING	200	SOCIAL SPACE	2
CH-04a	LOUNGE SEATING	217	LOUNGE	4
CH-04b	LOUNGE OTTOMAN	200	SOCIAL SPACE	2
CH-05	LOUNGE OTTOMAN	200	SOCIAL SPACE	2
CH-08a	HUDDLE CAFE w/SIX SEATER	200	SOCIAL SPACE	2
CH-10	CAFE CHAIR	217	LOUNGE	5
CH-12	LOUNGE BENCH	217	LOUNGE	5
CH-15	GUEST CHAIR (BY PSPC)	212	PHONE ROOM 01(BF)	1
CH-15	GUEST CHAIR (BY PSPC)	215	FOCUS ROOM 01	1
CH-15	GUEST CHAIR (BY PSPC)	216	FOCUS ROOM 02	1
CH-17	LOCKER BENCH	206	LOCKER AREA	2
FL-01	FILING (BY CLIENT)	203	OPEN WORK AREA 02	37
FL-01	FILING (BY CLIENT)	208	CORRIDOR	4
FL-01	FILING (BY CLIENT)	213	OPEN WORK AREA 03	7

2ND FLOOR FURNITURE SCHEDULE				
Furniture Code	Furniture Type	Room No	Room Name	Quantity
LK-01	LOCKER 18" W x 24"D x 72"H (SUPPLY BY CLIENT & INSTALL BY GC) & SEE FURNITURE NOTE#12 	200	SOCIAL SPACE	7
LK-01	LOCKER 18" W x 24"D x 72"H (SUPPLY BY CLIENT & INSTALL BY GC) & SEE FURNITURE NOTE#12 	206	LOCKER AREA	66
LK-01	LOCKER 18" W x 24"D x 72"H (SUPPLY BY CLIENT & INSTALL BY GC) & SEE FURNITURE NOTE#12 	211	CORRIDOR	6
LK-01	LOCKER 18" W x 24"D x 72"H (SUPPLY BY CLIENT & INSTALL BY GC) & SEE FURNITURE NOTE#12 	217	LOUNGE	7
PB-01	PHONE BOOTH-SINGLE	200	SOCIAL SPACE	1
PB-01	PHONE BOOTH-SINGLE	203	OPEN WORK AREA 02	2
PB-01	PHONE BOOTH-SINGLE	211	CORRIDOR	1
PB-01	PHONE BOOTH-SINGLE	217	LOUNGE	1
TA-01	MEETING TABLE	202	LARGE MEETING ROOM	8
TA-03	MULTI MEDIA TABLE	214	PROJECT ROOM 01	1
TA-04	HA TABLE	216	FOCUS ROOM 02	1
TA-07	LAPTOP TABLE	200	SOCIAL SPACE	2
TA-07	LAPTOP TABLE	217	LOUNGE	4
TA-08	FREE STANDING TABLE	200	SOCIAL SPACE	1
TA-08	FREE STANDING TABLE	217	LOUNGE	2
TA-09	FREE STANDING TABLE	217	LOUNGE	3
TA-10	FREE STANDING TABLE	212	PHONE ROOM 01(BF)	1
WS-01	RECTANGULAR TABLE (HA)	201	OPEN WORK AREA 01	6
WS-01	RECTANGULAR TABLE (HA)	203	OPEN WORK AREA 02	28
WS-01c	FREE STANDING POWER BEAM	201	OPEN WORK AREA 01	4
WS-01c	FREE STANDING POWER BEAM	203	OPEN WORK AREA 02	17
WS-01c	FREE STANDING POWER BEAM	213	OPEN WORK AREA 03	6
WS-02	120 DEGREE TABLE (HA)	203	OPEN WORK AREA 02	2
WS-03	RECTANGULAR TABLE (HA)	201	OPEN WORK AREA 01	6
WS-03	RECTANGULAR TABLE (HA)	203	OPEN WORK AREA 02	10
WS-03	RECTANGULAR TABLE (HA)	205	MAIL ROOM	8
WS-03	RECTANGULAR TABLE (HA)	213	OPEN WORK AREA 03	22
WS-03	RECTANGULAR TABLE (HA)	215	FOCUS ROOM 01	1
WS-03c	FREE STANDING POWER BEAM	201	OPEN WORK AREA 01	2
WS-03c	FREE STANDING POWER BEAM	203	OPEN WORK AREA 02	1
WS-03c	FREE STANDING POWER BEAM	205	MAIL ROOM	3

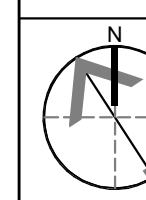
#	DATE	ISSUED FOR	DESCRIPTION	BY
20	2021-04-28	ISSUED FOR CCO#02		BFD
18	2021-04-19	ISSUED FOR CONSTRUCTION		BFD
17	2021-04-16	ISSUED FOR CCO#01		BFD
13	2021-02-03	ISSUED FOR ADM#1		BFD
12	2021-01-21	ISSUED FOR TENDER		BFD
11	2020-12-16	ISSUED FOR RFP#CD		BFD
10	2020-11-24	ISSUED FOR FURNITURE REVIEW		GIL
9	2020-11-09	ISSUED FOR 50%CD		BFD
8	2020-10-29	ISSUED FOR FURNITURE REVIEW		GIL
7	2020-10-16	ISSUED FOR 100% DD		BFD
6	2020-10-14	ISSUED FOR FURNITURE REVIEW		GIL
4	2020-10-01	ISSUED FOR FURNITURE REVIEW		GIL
2	2020-09-02	ISSUED FOR FURNITURE REVIEW		GIL
1	2020-08-07	ISSUED FOR 90% DD		BFD

PROJECT ESDC FIT-UP

81 REGENT STREET
FREDERICTON, NB

DRAWING 2ND FLOOR FURNITURE / POWER & COMMUNICATION PLAN

PROJECT NO:	18.065IF2
PROJECT DATE:	2020-04-16
DRAWN BY:	GIL
CHECKED BY:	BFD
SCALE:	N.T.S.
DRAWING NO.:	ID103



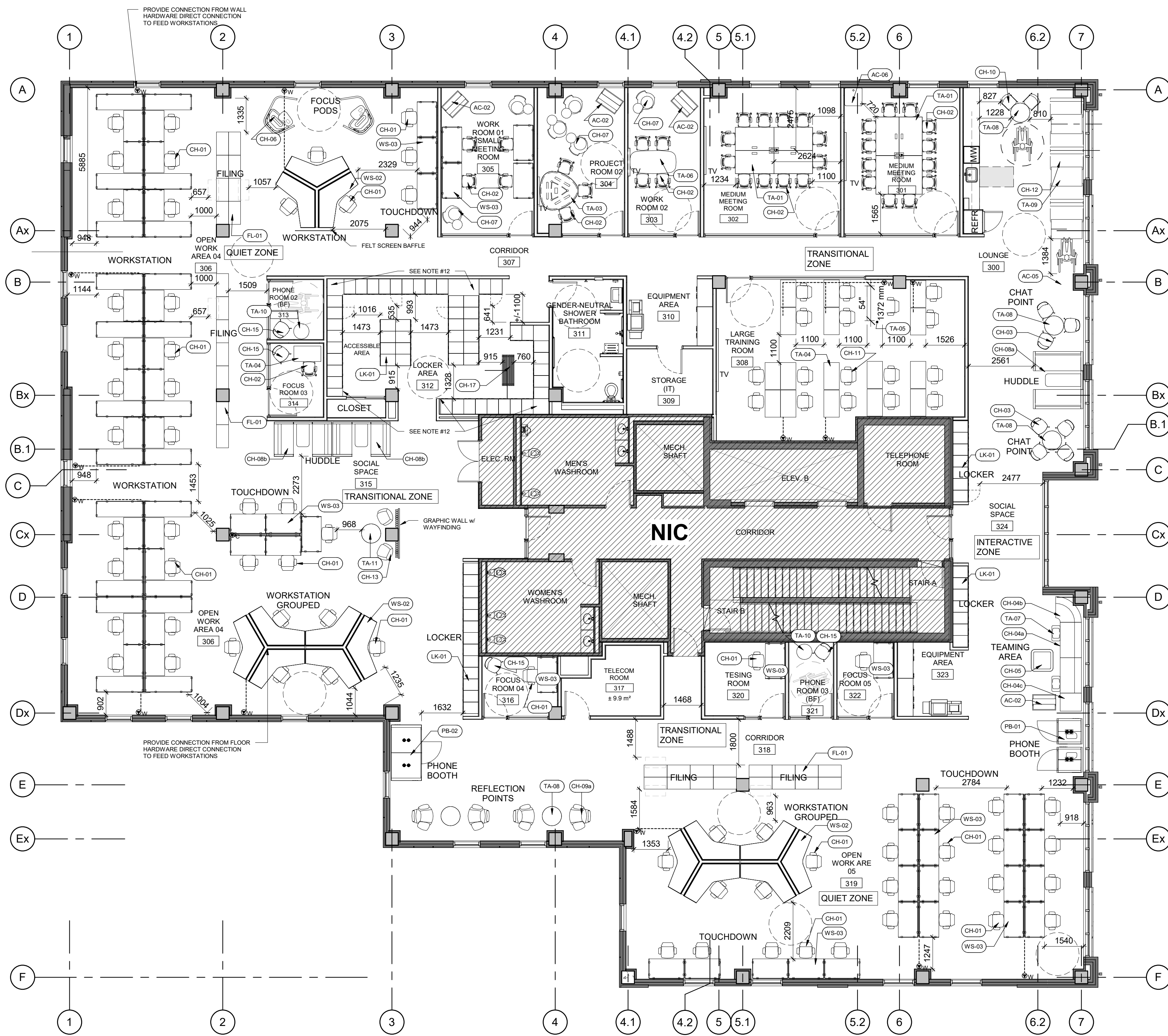
FURNITURE AND POWER & COMMUNICATION PLAN NOTES

- THIS DRAWING IS TO BE USED FOR LAYOUT AND LOCATION PURPOSES ONLY. THIS DRAWING IS TO BE READ IN CONJUNCTION WITH ENGINEER'S DRAWINGS AND SPECIFICATIONS.
- GENERAL CONTRACTOR MUST REPORT ANY DISCREPANCIES BETWEEN CONSULTANT'S DRAWINGS AND INTERIOR DESIGN DRAWINGS TO DESIGNER FOR CLARIFICATION BEFORE PROCEEDING WITH THE WORK.
- ALL RECEPTACLES TO BE MOUNTED AT 400mm AFF UNLESS OTHERWISE NOTED.
- ALL OUTLET BOXES SHALL BE STAGGERED IN PARTITIONS (NOT BACK TO BACK) AS REQUIRED TO ENSURE THAT CONTINUOUS SOUND ATTENUATION BATTS CAN BE INSTALLED WITHOUT INTERRUPTION, WHERE APPLICABLE.
- ALL OUTLETS MOUNTED IN MILLWORK SHALL BE COORDINATED WITH MANUFACTURER AND TO THE REQUIREMENTS OF INTERIOR DESIGN DRAWINGS. REFER TO THE MILLWORK DETAILS FOR EXACT LOCATIONS AND REQUIREMENTS.
- ALL CIRCUITS ARE TO BE PROPERLY LABELED, REFER TO ENGINEER'S DRAWINGS AND SPECIFICATIONS FOR DETAILS.
- UNLESS OTHERWISE INDICATED, EXACT LOCATIONS FOR ALL ELECTRICAL WORK TO BE DETERMINED ON SITE, ELECTRICIAN TO IDENTIFY AND LABEL CIRCUITS ON PANEL.
- PROVIDE ADEQUATE SLACK LENGTH OF VOICE / DATA CABLES WITHIN MILLWORK TO REACH FURTHEST LOCATION POSSIBLE FOR EACH TERMINATION.
- CONTRACTOR SHALL DO ALL DATA / VOICE TERMINATIONS.
- ALL FIRE PULL STATION, CARD READER, PUSH BUTTON LOCATIONS, ETC. SHALL BE TO THE REQUIREMENTS OF BUILDING CODE. REFER TO ARCHITECTURAL & ENGINEER'S DRAWINGS FOR DETAILS & SPECIFICATIONS.
- ALL FLOOR MONUMENTS & CORE DRILL LOCATIONS SHALL BE DONE IN ACCORDANCE TO THE OWNER'S INSTRUCTIONS AND APPROVAL. PROVIDE X-RAY INSPECTIONS TO THE OWNER AS REQUESTED. DESIGNER SHALL APPROVE ALL MONUMENT LOCATIONS PRIOR TO INSTALLATION. REFER ELECTRICAL CONTRACT DOCUMENTS FOR SPECIFICATION OF FLUSH TYPE MONUMENT.
- ALL FURNITURE SUPPLY AND INSTALL BY CLIENT, EXCEPT RECYCLE STATION (AC-05). GENERAL CONTRACTOR SHALL COORDINATE WITH FURNITURE VENDOR FOR EXACT LOCATIONS OF FURNITURE FEED. LOCKERS SUPPLY BY CLIENT AND INSTALL BY GENERAL CONTRACTOR. GC TO PROVIDE LOCKER FILLER PANELS & FLAT TOP CORNER FILLERS TO ASSEMBLE BANKS OF LOCKERS (LK-01) WITH CONCEALED FASTENERS IN LOCKER AREA. GC TO ENSURE LOCKERS ARE DIRECTLY TO WALL STUDS WITH ANCHOR METAL ANGLE. PROVIDE SHOP DRAWINGS AS REQ'D.
- LOCKERS (LK-01) IN PUBLIC CORRIDORS TO BE CONNECT SIDE TO SIDE IN BANKS WITH ASSOCIATED TRIM TO FASTENED TO THE BULKHEAD AND THE TOP OF THE LOCKERS WITH CONCEALED FASTENERS. PROVIDE FILLER PANELS BETWEEN LOCKER FRAMES & WALL AS REQ'D. PROVIDE SHOP DRAWINGS AS REQ'D.

FURNITURE AND POWER & COMMUNICATION PLAN LEGEND

- XX FURNITURE CODE
- PROVIDE CONNECTION FROM WALL OR CEILING HARDWARE DIRECT CONNECTION TO FEED WORKSTATIONS. CONTRACTOR TO COORDINATE POWER REQUIREMENT WITH WORKSTATIONS PRIOR TO START OF WORK. CONFIRM EXACT LOCATION OF FURNITURE FEED PRIOR TO ROUGHING IN
- ON-CARPET WIREWAY
- RECESSED FLOOR BOX FOR POWER & DATA REFER TO ELECTRICAL DWGS FOR DETAILS
- WALL MOUNTED DUPLEX RECEPTACLE (15A-120V)
- WALL MOUNTED DUPLEX RECEPTACLE MOUNTED ABOVE COUNTER (15A-120V)
- WALL MOUNTED GFCI DUPLEX RECEPTACLE MOUNTED ABOVE COUNTER

NOTE: REFER TO ELECTRICAL DRAWINGS FOR MORE INFORMATION



1 3RD FLOOR FURNITURE PLAN
ID113 1:100

3RD FLOOR FURNITURE SCHEDULE				
Furniture Code	FURNITURE TYPE	Room No	Room Name	Quantity
AC-02	MOBILE WHITEBOARD	303	WORK ROOM 02	1
AC-02	MOBILE WHITEBOARD	304	PROJECT ROOM 02	1
AC-02	MOBILE WHITEBOARD	305	WORK ROOM 01 /SMALL MEETING ROOM	1
AC-02	MOBILE WHITEBOARD	324	SOCIAL SPACE	1
AC-05	RECYCLE STATION (BY GC) HAWORTH - X SERIES RECYCLING STATION "JRPY-3948-SJAN, TR_AK"	300	LOUNGE	1
AC-06	MOBILE FURNITURE RACK (BY PSPC)	301	MEDIUM MEETING ROOM	1
CH-01	TASK CHAIR (BY PSPC)	306	OPEN WORK AREA 04	34
CH-01	TASK CHAIR (BY PSPC)	315	SOCIAL SPACE	5
CH-01	TASK CHAIR (BY PSPC)	316	FOCUS ROOM 04	1
CH-01	TASK CHAIR (BY PSPC)	319	OPEN WORK ARE 05	27
CH-01	TASK CHAIR (BY PSPC)	320	TESING ROOM	1
CH-01	TASK CHAIR (BY PSPC)	322	FOCUS ROOM 05	1
CH-02	TASK CHAIR	301	MEDIUM MEETING ROOM	12
CH-02	TASK CHAIR	302	MEDIUM MEETING ROOM	12
CH-02	TASK CHAIR	303	WORK ROOM 02	4
CH-02	TASK CHAIR	304	PROJECT ROOM 02	3
CH-02	TASK CHAIR	305	WORK ROOM 01 /SMALL MEETING ROOM	4
CH-02	TASK CHAIR	314	FOCUS ROOM 03	1
CH-03	SIDE CHAIR	300	LOUNGE	3
CH-03	SIDE CHAIR	324	SOCIAL SPACE	4
CH-04a	LOUNGE SEATING	324	SOCIAL SPACE	2
CH-04b	LOUNGE SEATING	324	SOCIAL SPACE	1
CH-04c	LOUNGE SEATING	324	SOCIAL SPACE	1
CH-05	LOUNGE OTTOMAN	324	SOCIAL SPACE	1
CH-06	FOCUS PODS	306	OPEN WORK AREA 04	2
CH-08a	HUDDLE CAVE w/SIX SEATER	300	LOUNGE	1
CH-08b	HUDDLE CAVE w/FOUR SEATER	315	SOCIAL SPACE	2
CH-09a	LOUNGE CHAIR	319	OPEN WORK ARE 05	4
CH-10	CAFE CHAIR	300	LOUNGE	2
CH-11	TASK CHAIR	308	LARGE TRAINING ROOM	17
CH-12	LOUNGE BENCH	300	LOUNGE	5
CH-13	GUEST CHAIR	315	SOCIAL SPACE	2
CH-15	GUEST CHAIR (BY PSPC)	313	PHONE ROOM 02 (BF)	1
CH-15	GUEST CHAIR (BY PSPC)	314	FOCUS ROOM 03	1
CH-15	GUEST CHAIR (BY PSPC)	316	FOCUS ROOM 04	1
CH-15	GUEST CHAIR (BY PSPC)	321	PHONE ROOM 03 (BF)	1
CH-17	LOCKER BENCH	312	LOCKER AREA	1
FL-01	FILING (BY CLIENT)	306	OPEN WORK AREA 04	15
FL-01	FILING (BY CLIENT)	318	CORRIDOR	8
FL-01	FILING (BY CLIENT)	319	OPEN WORK ARE 05	8

3RD FLOOR FURNITURE SCHEDULE				
Furniture Code	FURNITURE TYPE	Room No	Room Name	Quantity
LK-01	LOCKER 18" W x 24" D x 72" H (SUPPLY BY CLIENT & INSTALL BY GC) & SEE FURNITURE NOTE#12 	306	OPEN WORK AREA 04	10
LK-01	LOCKER 18" W x 24" D x 72" H (SUPPLY BY CLIENT & INSTALL BY GC) & SEE FURNITURE NOTE#12 	312	LOCKER AREA	54
LK-01	LOCKER 18" W x 24" D x 72" H (SUPPLY BY CLIENT & INSTALL BY GC) & SEE FURNITURE NOTE#12 	315	SOCIAL SPACE	3
LK-01	LOCKER 18" W x 24" D x 72" H (SUPPLY BY CLIENT & INSTALL BY GC) & SEE FURNITURE NOTE#12 	324	SOCIAL SPACE	14
PB-01	PHONE BOOTH-SINGLE	324	SOCIAL SPACE	2
PB-02	PHONE BOOTH-DOUBLE	306	OPEN WORK AREA 04	1
TA-01	MEETING TABLE	301	MEDIUM MEETING ROOM	4
TA-01	MEETING TABLE	302	MEDIUM MEETING ROOM	4
TA-03	MULTI MEDIA TABLE	304	PROJECT ROOM 02	1
TA-04	HA TABLE	308	LARGE TRAINING ROOM	16
TA-04	HA TABLE	314	FOCUS ROOM 03	1
TA-05	HA TABLE	308	LARGE TRAINING ROOM	1
TA-06	COLLABORATIVE TABLE	303	WORK ROOM 02	1
TA-07	LAPTOP TABLE	324	SOCIAL SPACE	2
TA-08	FREE STANDING TABLE	300	LOUNGE	2
TA-08	FREE STANDING TABLE	319	OPEN WORK ARE 05	2
TA-08	FREE STANDING TABLE	324	SOCIAL SPACE	1
TA-09	FREE STANDING TABLE	300	LOUNGE	3
TA-10	FREE STANDING TABLE	313	PHONE ROOM 02 (BF)	1
TA-10	FREE STANDING TABLE	321	PHONE ROOM 03 (BF)	1
TA-11	COFFEE TABLE	315	SOCIAL SPACE	1
WS-01	RECTANGULAR TABLE (HA)	306	OPEN WORK AREA 04	22
WS-01c	FREE STANDING POWER BEAM	306	OPEN WORK AREA 04	11
WS-01c	FREE STANDING POWER BEAM	319	OPEN WORK ARE 05	6
WS-02	120 DEGREE TABLE (HA)	306	OPEN WORK AREA 04	3
WS-02	120 DEGREE TABLE (HA)	319	OPEN WORK ARE 05	2
WS-03	RECTANGULAR TABLE (HA)	305	WORK ROOM 01 /SMALL MEETING ROOM	4
WS-03	RECTANGULAR TABLE (HA)	306	OPEN WORK AREA 04	3
WS-03	RECTANGULAR TABLE (HA)	315	SOCIAL SPACE	5
WS-03	RECTANGULAR TABLE (HA)	316	FOCUS ROOM 04	1
WS-03	RECTANGULAR TABLE (HA)	319	OPEN WORK ARE 05	21
WS-03	RECTANGULAR TABLE (HA)	320	TESING ROOM	1
WS-03	RECTANGULAR TABLE (HA)	322	FOCUS ROOM 05	1
WS-03c	FREE STANDING POWER BEAM	315	SOCIAL SPACE	2

#	DATE	DESCRIPTION	BY
18	2021-04-19	ISSUED FOR CONSTRUCTION	BFD
17	2021-04-16	ISSUED FOR C0001	BFD
13	2021-02-03	ISSUED FOR ADM1	BFD
12	2021-01-21	ISSUED FOR TENDER	BFD
11	2020-12-18	ISSUED FOR RFP/CD	BFD
10	2020-11-24	ISSUED FOR FURNITURE REVIEW	GIL
9	2020-11-09	ISSUED FOR 50%CD	BFD
8	2020-10-29	ISSUED FOR FURNITURE REVIEW	GIL
7	2020-10-16	ISSUED FOR 100% DD	BFD
6	2020-10-14	ISSUED FOR FURNITURE REVIEW	GIL
4	2020-10-01	ISSUED FOR FURNITURE REVIEW	GIL
2	2020-09-02	ISSUED FOR FURNITURE REVIEW	GIL
1	2020-08-07	ISSUED FOR 90% DD	GIL

PROJECT
ESDC FIT-UP

81 REGENT STREET
FREDERICTON, NB

DRAWING
3RD FLOOR FURNITURE PLAN // POWER & COMMUNICATION PLAN

PROJECT NO	18.065IF2
PROJECT DATE	2020-04-16
DRAWN BY	GIL
CHECKED BY	BFD
SCALE	N.T.S.
DRAWING NO	ID113



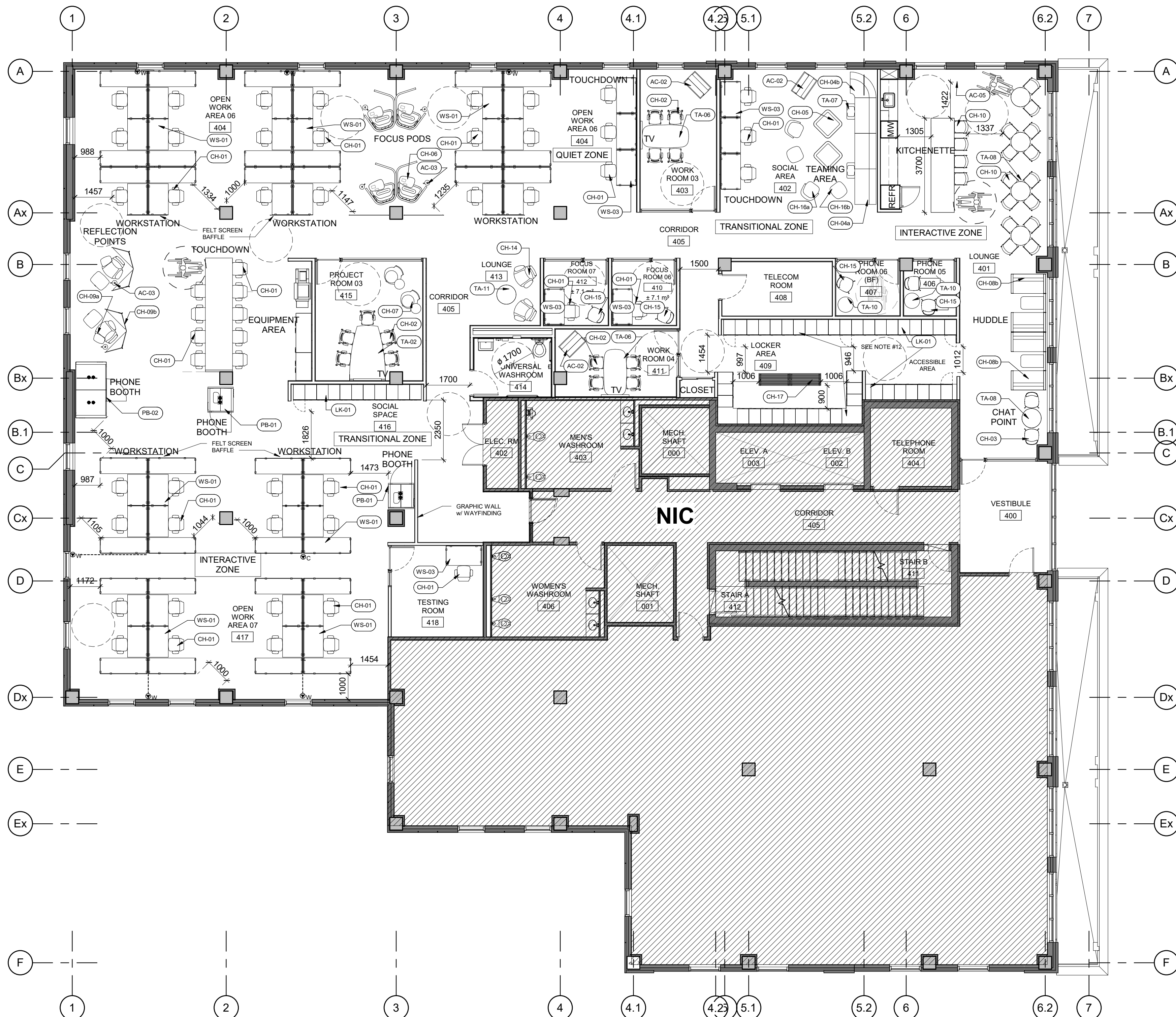
FURNITURE AND POWER & COMMUNICATION PLAN NOTES

- THIS DRAWING IS TO BE USED FOR LAYOUT AND LOCATION PURPOSES ONLY. THIS DRAWING IS TO BE READ IN CONJUNCTION WITH ENGINEER'S DRAWINGS AND SPECIFICATIONS.
- GENERAL CONTRACTOR MUST REPORT ANY DISCREPANCIES BETWEEN CONSULTANT'S DRAWINGS AND INTERIOR DESIGN DRAWINGS TO DESIGNER FOR CLARIFICATION BEFORE PROCEEDING WITH THE WORK.
- ALL RECEPTACLES TO BE MOUNTED AT 400mm AFF UNLESS OTHERWISE NOTED.
- ALL OUTLET BOXES SHALL BE STAGGERED IN PARTITIONS (NOT BACK TO BACK) AS REQUIRED TO ENSURE THAT CONTINUOUS SOUND ATTENUATION BATTS CAN BE INSTALLED WITHOUT INTERRUPTION, WHERE APPLICABLE.
- ALL OUTLETS MOUNTED IN MILLWORK SHALL BE COORDINATED WITH MANUFACTURER AND TO THE REQUIREMENTS OF INTERIOR DESIGN DRAWINGS. REFER TO THE MILLWORK DETAILS FOR EXACT LOCATIONS AND REQUIREMENTS.
- ALL CIRCUITS ARE TO BE PROPERLY LABELED, REFER TO ENGINEER'S DRAWINGS AND SPECIFICATIONS FOR DETAILS.
- UNLESS OTHERWISE INDICATED, EXACT LOCATIONS FOR ALL ELECTRICAL WORK TO BE DETERMINED ON SITE, ELECTRICIAN TO IDENTIFY AND LABEL CIRCUITS ON PANEL.
- PROVIDE ADEQUATE SLACK LENGTH OF VOICE / DATA CABLES WITHIN MILLWORK TO REACH FURTHEST LOCATION POSSIBLE FOR EACH TERMINATION.
- CONTRACTOR SHALL DO ALL DATA / VOICE TERMINATIONS.
- ALL FIRE PULL STATION, CARD READER, PUSH BUTTON LOCATIONS, ETC., SHALL BE TO THE REQUIREMENTS OF BUILDING CODE. REFER TO ARCHITECTURAL & ENGINEER'S DRAWINGS FOR DETAILS & SPECIFICATIONS.
- ALL FLOOR MONUMENTS & CORE DRILL LOCATIONS SHALL BE DONE IN ACCORDANCE TO THE OWNER'S INSTRUCTIONS AND APPROVAL. PROVIDE X-RAY INSPECTIONS TO THE OWNER AS REQUESTED. DESIGNER SHALL APPROVE ALL MONUMENT LOCATIONS PRIOR TO INSTALLATION. REFER ELECTRICAL CONTRACT DOCUMENTS FOR SPECIFICATION OF FLUSH TYPE MONUMENT.
- ALL FURNITURE SUPPLY AND INSTALL BY CLIENT, EXCEPT RECYCLE STATION (AC-05). GENERAL CONTRACTOR SHALL COORDINATE WITH FURNITURE VENDOR FOR EXACT LOCATIONS OF FURNITURE FEED. LOCKERS SUPPLY BY CLIENT AND INSTALL BY GENERAL CONTRACTOR. GC TO PROVIDE LOCKER FILLER PANELS & FLAT TOP CORNER FILLERS TO ASSEMBLE BANKS OF LOCKERS (LK-01) WITH CONCEALED FASTENERS IN LOCKER AREA. GC TO ENSURE LOCKERS ARE DIRECTLY TO WALL STUDS WITH ANCHOR METAL ANGLE. PROVIDE SHOP DRAWINGS AS REQ'D.
- LOCKERS (LK-01) IN PUBLIC CORRIDORS TO BE CONNECT SIDE TO SIDE IN BANKS WITH ASSOCIATED TRIM TO FASTENED TO THE BULKHEAD AND THE TOP OF THE LOCKERS WITH CONCEALED FASTENERS. PROVIDE FILLER PANELS BETWEEN LOCKER FRAMES & WALL AS REQ'D. PROVIDE SHOP DRAWINGS AS REQ'D.

FURNITURE AND POWER & COMMUNICATION PLAN LEGEND

- XX FURNITURE CODE
- PROVIDE CONNECTION FROM WALL OR CEILING HARDWARE DIRECT CONNECTION TO FEED WORKSTATIONS. CONTRACTOR TO COORDINATE POWER REQUIREMENT WITH WORKSTATIONS PRIOR TO START OF WORK. CONFIRM EXACT LOCATION OF FURNITURE FEED PRIOR TO ROUGHING IN
- ON-CARPET WIREWAY
- RECESSED FLOOR BOX FOR POWER & DATA REFER TO ELECTRICAL DWGS FOR DETAILS
- WALL MOUNTED DUPLEX RECEPTACLE (15A-120V)
- WALL MOUNTED DUPLEX RECEPTACLE MOUNTED ABOVE COUNTER (15A-120V)
- WALL MOUNTED GFCI DUPLEX RECEPTACLE MOUNTED ABOVE COUNTER

NOTE: REFER TO ELECTRICAL DRAWINGS FOR MORE INFORMATION



4TH FLOOR FURNITURE SCHEDULE				
Furniture Code	FURNITURE TYPE	Room No	Room Name	Quantity
AC-02	MOBILE WHITEBOARD	402	SOCIAL AREA	1
AC-02	MOBILE WHITEBOARD	403	WORK ROOM 03	1
AC-02	MOBILE WHITEBOARD	411	WORK ROOM 04	1
AC-03	POWER MODULE	404	OPEN WORK AREA 06	4
AC-03	POWER MODULE	416	SOCIAL SPACE	2
AC-05	RECYCLE STATION (BY GC) HAWORTH - X SERIES RECYCLING STATION "JRPY-3948-SJAN,TR, AK"	401	LOUNGE	1
CH-01	TASK CHAIR (BY PSPC)	402	SOCIAL AREA	3
CH-01	TASK CHAIR (BY PSPC)	404	OPEN WORK AREA 06	21
CH-01	TASK CHAIR (BY PSPC)	410	FOCUS ROOM 06	1
CH-01	TASK CHAIR (BY PSPC)	412	FOCUS ROOM 07	1
CH-01	TASK CHAIR (BY PSPC)	416	SOCIAL SPACE	9
CH-01	TASK CHAIR (BY PSPC)	417	OPEN WORK AREA 07	16
CH-01	TASK CHAIR (BY PSPC)	418	TESTING ROOM	1
CH-02	TASK CHAIR	403	WORK ROOM 03	4
CH-02	TASK CHAIR	411	WORK ROOM 04	4
CH-02	TASK CHAIR	415	PROJECT ROOM 03	5
CH-03	SIDE CHAIR	401	LOUNGE	2
CH-04a	LOUNGE SEATING	402	SOCIAL AREA	3
CH-04b	LOUNGE SEATING	402	SOCIAL AREA	1
CH-05	LOUNGE OTTOMAN	402	SOCIAL AREA	2
CH-06	FOCUS PODS	404	OPEN WORK AREA 06	4
CH-08b	HUDDLE CAVE w/FOUR SEATER	401	LOUNGE	2
CH-09a	LOUNGE CHAIR	416	SOCIAL SPACE	2
CH-09b	LOUNGE SCREENS	405	CORRIDOR	1
CH-09c	LOUNGE SCREENS	416	SOCIAL SPACE	3
CH-10	CAFE CHAIR	401	LOUNGE	18

4TH FLOOR FURNITURE SCHEDULE				
Furniture Code	FURNITURE TYPE	Room No	Room Name	Quantity
CH-14	LOUNGE CHAIR	413	LOUNGE	2
CH-15	GUEST CHAIR (BY PSPC)	406	PHONE ROOM 05	2
CH-15	GUEST CHAIR (BY PSPC)	407	PHONE ROOM 06 (BF)	1
CH-15	GUEST CHAIR (BY PSPC)	410	FOCUS ROOM 06	1
CH-15	GUEST CHAIR (BY PSPC)	412	FOCUS ROOM 07	1
CH-16a	LOUNGE CHAIR	402	SOCIAL AREA	2
CH-16b	LOUNGE CHAIR	402	SOCIAL AREA	2
CH-17	LOCKER BENCH	409	LOCKER AREA	2
LK-01	LOCKER 18" W x 24" D x 72" H (SUPPLY BY CLIENT & INSTALL BY GC) & SEE FURNITURE NOTE#12 & #13	409	LOCKER AREA	42
LK-01	LOCKER 18" W x 24" D x 72" H (SUPPLY BY CLIENT & INSTALL BY GC) & SEE FURNITURE NOTE#12 & #13	416	SOCIAL SPACE	11
PB-01	PHONE BOOTH-SINGLE	416	SOCIAL SPACE	1
PB-01	PHONE BOOTH-SINGLE	417	OPEN WORK AREA 07	1
PB-02	PHONE BOOTH-DOUBLE	416	SOCIAL SPACE	1
TA-02	HEIGHT ADJUSTABLE MEDIA WALL TABLE	415	PROJECT ROOM 03	1
TA-06	COLLABORATIVE TABLE	403	WORK ROOM 03	1
TA-06	COLLABORATIVE TABLE	411	WORK ROOM 04	1
TA-07	LAPTOP TABLE	402	SOCIAL AREA	2
TA-08	FREE STANDING TABLE	401	LOUNGE	5
TA-10	FREE STANDING TABLE	406	PHONE ROOM 05	1
TA-10	FREE STANDING TABLE	407	PHONE ROOM 06 (BF)	1
TA-11	COFFEE TABLE	413	LOUNGE	1
WS-01	RECTANGULAR TABLE (HA)	404	OPEN WORK AREA 06	18
WS-01	RECTANGULAR TABLE (HA)	417	OPEN WORK AREA 07	16
WS-01c	FREE STANDING POWER BEAM	404	OPEN WORK AREA 06	9
WS-01c	FREE STANDING POWER BEAM	417	OPEN WORK AREA 07	8
WS-03	RECTANGULAR TABLE (HA)	402	SOCIAL AREA	3
WS-03	RECTANGULAR TABLE (HA)	404	OPEN WORK AREA 06	3
WS-03	RECTANGULAR TABLE (HA)	410	FOCUS ROOM 06	1
WS-03	RECTANGULAR TABLE (HA)	412	FOCUS ROOM 07	1
WS-03	RECTANGULAR TABLE (HA)	418	TESTING ROOM	1

1 4TH FLOOR FURNITURE PLAN
ID123 1:100

#	DATE	DESCRIPTION	BY
18	2021-04-19	ISSUED FOR CONSTRUCTION	BFD
17	2021-04-16	ISSUED FOR CCO#01	BFD
13	2021-02-03	ISSUED FOR ACH#1	BFD
12	2021-01-21	ISSUED FOR TENDER	BFD
10	2020-11-24	ISSUED FOR FURNITURE REVIEW	GIL
9	2020-11-09	ISSUED FOR 50%CD	BFD
8	2020-10-29	ISSUED FOR FURNITURE REVIEW	GIL
7	2020-10-16	ISSUED FOR 100% DD	BFD
6	2020-10-14	ISSUED FOR FURNITURE REVIEW	GIL
4	2020-10-01	ISSUED FOR FURNITURE REVIEW	GIL
2	2020-09-02	ISSUED FOR FURNITURE REVIEW	GIL
1	2020-08-07	ISSUED FOR 90% DD	GIL

PROJECT
ESDC FIT-UP
81 REGENT STREET
FREDERICTON, NB

DRAWING
4TH FLOOR FURNITURE / POWER & COMMUNICATION PLAN

PROJECT NO.
18.065IF2
PROJECT DATE
2020-04-16
DRAWN BY
Author

CHECKED BY
Checker
SCALE
N.T.S.

DRAWING NO.
ID123

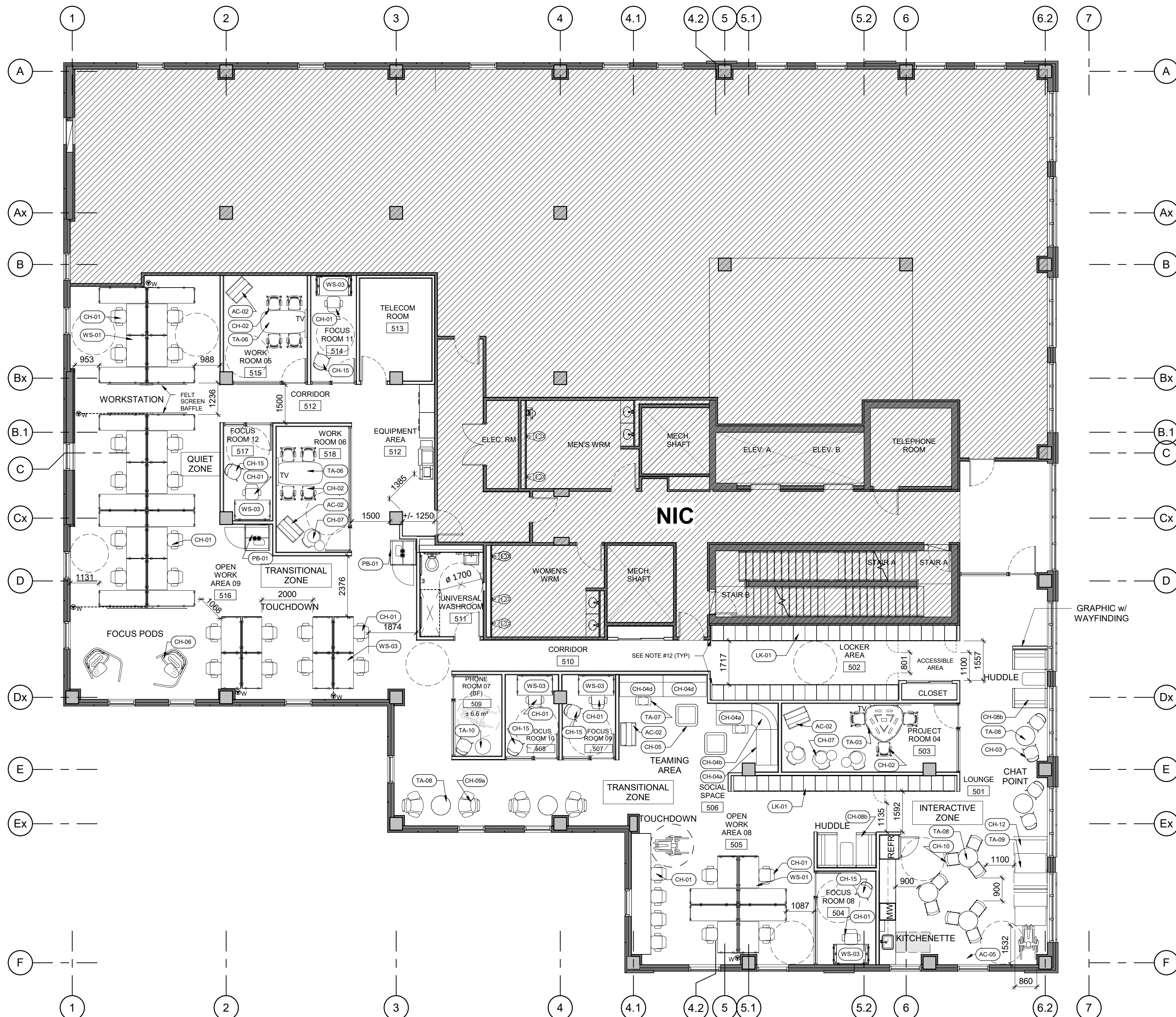
FURNITURE AND POWER & COMMUNICATION PLAN NOTES

- THIS DRAWING IS TO BE USED FOR LAYOUT AND LOCATION PURPOSES ONLY. THIS DRAWING IS TO BE READ IN CONJUNCTION WITH ENGINEER'S DRAWINGS AND SPECIFICATIONS.
- GENERAL CONTRACTOR MUST REPORT ANY DISCREPANCIES BETWEEN CONSULTANT'S DRAWINGS AND INTERIOR DESIGN DRAWINGS TO DESIGNER FOR CLARIFICATION BEFORE PROCEEDING WITH THE WORK.
- ALL RECEPTACLES TO BE MOUNTED AT 400mm AFF UNLESS OTHERWISE NOTED.
- ALL OUTLET BOXES SHALL BE STAGGERED IN PARTITIONS (NOT BACK TO BACK) AS REQUIRED TO ENSURE THAT CONTINUOUS SOUND ATTENUATION BATTS CAN BE INSTALLED WITHOUT INTERRUPTION, WHERE APPLICABLE.
- ALL OUTLETS MOUNTED IN MILLWORK SHALL BE COORDINATED WITH MANUFACTURER AND TO THE REQUIREMENTS OF INTERIOR DESIGN DRAWINGS. REFER TO THE MILLWORK DETAILS FOR EXACT LOCATIONS AND REQUIREMENTS.
- ALL CIRCUITS ARE TO BE PROPERLY LABELED, REFER TO ENGINEER'S DRAWINGS AND SPECIFICATIONS FOR DETAILS.
- UNLESS OTHERWISE INDICATED, EXACT LOCATIONS FOR ALL ELECTRICAL WORK TO BE DETERMINED ON SITE, ELECTRICIAN TO IDENTIFY AND LABEL CIRCUITS ON PANEL.
- PROVIDE ADEQUATE SLACK LENGTH OF VOICE / DATA CABLES WITHIN MILLWORK TO REACH FURTHEST LOCATION POSSIBLE FOR EACH TERMINATION.
- CONTRACTOR SHALL DO ALL DATA / VOICE TERMINATIONS.
- ALL FIRE PULL STATION, CARD READER, PUSH BUTTON LOCATIONS, ETC., SHALL BE TO THE REQUIREMENTS OF BUILDING CODE. REFER TO ARCHITECTURAL & ENGINEER'S DRAWINGS FOR DETAILS & SPECIFICATIONS.
- ALL FLOOR MONUMENTS & CORE DRILL LOCATIONS SHALL BE DONE IN ACCORDANCE TO THE OWNER'S INSTRUCTIONS AND APPROVAL. PROVIDE X-RAY INSPECTIONS TO THE OWNER AS REQUESTED. DESIGNER SHALL APPROVE ALL MONUMENT LOCATIONS PRIOR TO INSTALLATION. REFER ELECTRICAL CONTRACT DOCUMENTS FOR SPECIFICATION OF FLUSH TYPE MONUMENT.
- ALL FURNITURE SUPPLY AND INSTALL BY CLIENT, EXCEPT RECYCLE STATION (AC-05). GENERAL CONTRACTOR SHALL COORDINATE WITH FURNITURE VENDOR FOR EXACT LOCATIONS OF FURNITURE FEED. LOCKERS SUPPLY BY CLIENT AND INSTALL BY GENERAL CONTRACTOR. GC TO PROVIDE LOCKER FILLER PANELS & FLAT TOP CORNER FILLERS TO ASSEMBLE BANKS OF LOCKERS (LK-01) WITH CONCEALED FASTENERS IN LOCKER AREA. GC TO ENSURE LOCKERS ARE DIRECTLY TO WALL STUDS WITH ANCHOR METAL ANGLE. PROVIDE SHOP DRAWINGS AS REQ'D.
- LOCKERS (LK-01) IN PUBLIC CORRIDORS TO BE CONNECT SIDE TO SIDE IN BANKS WITH ASSOCIATED TRIM TO FASTENED TO THE BULKHEAD AND THE TOP OF THE LOCKERS WITH CONCEALED FASTENERS. PROVIDE FILLER PANELS BETWEEN LOCKER FRAMES & WALL AS REQ'D. PROVIDE SHOP DRAWINGS AS REQ'D.

FURNITURE AND POWER & COMMUNICATION PLAN LEGEND

- XX FURNITURE CODE
- PROVIDE CONNECTION FROM WALL OR CEILING HARDWARE DIRECT CONNECTION TO FEED WORKSTATIONS. CONTRACTOR TO COORDINATE POWER REQUIREMENT WITH WORKSTATIONS PRIOR TO START OF WORK. CONFIRM EXACT LOCATION OF FURNITURE FEED PRIOR TO ROUGHING IN
- ON-CARPET WIREWAY
- RECESSED FLOOR BOX FOR POWER & DATA REFER TO ELECTRICAL DWGS FOR DETAILS
- WALL MOUNTED DUPLEX RECEPTACLE (15A-120V)
- WALL MOUNTED DUPLEX RECEPTACLE MOUNTED ABOVE COUNTER (15A-120V)
- WALL MOUNTED GFCI DUPLEX RECEPTACLE MOUNTED ABOVE COUNTER

NOTE: REFER TO ELECTRICAL DRAWINGS FOR MORE INFORMATION



5TH FLOOR FURNITURE SCHEDULE				
Furniture Code	Furniture Type	Room No	Room Name	Quantity
AC-02	MOBILE WHITEBOARD	503	PROJECT ROOM 04	1
AC-02	MOBILE WHITEBOARD	506	SOCIAL SPACE	1
AC-02	MOBILE WHITEBOARD	515	WORK ROOM 05	1
AC-02	MOBILE WHITEBOARD	518	WORK ROOM 06	1
AC-05	RECYCLE STATION (BY GC) HAWORTH - X SERIES RECYCLING STATION "JRPY-3948-SJAN, TR_AK"	501	LOUNGE	1
CH-01	TASK CHAIR (BY PSPC)	504	FOCUS ROOM 08	1
CH-01	TASK CHAIR (BY PSPC)	505	OPEN WORK AREA 08	8
CH-01	TASK CHAIR (BY PSPC)	507	FOCUS ROOM 09	1
CH-01	TASK CHAIR (BY PSPC)	508	FOCUS ROOM 10	1
CH-01	TASK CHAIR (BY PSPC)	514	FOCUS ROOM 11	1
CH-01	TASK CHAIR (BY PSPC)	516	OPEN WORK AREA 09	20
CH-01	TASK CHAIR (BY PSPC)	517	FOCUS ROOM 12	1
CH-02	TASK CHAIR	503	PROJECT ROOM 04	3
CH-02	TASK CHAIR	515	WORK ROOM 05	4
CH-02	TASK CHAIR	518	WORK ROOM 06	4
CH-03	SIDE CHAIR	501	LOUNGE	4
CH-04a	LOUNGE SEATING	506	SOCIAL SPACE	2
CH-04b	LOUNGE SEATING	506	SOCIAL SPACE	1
CH-04d	LOUNGE SEATING	506	SOCIAL SPACE	2
CH-05	LOUNGE OTTOMAN	506	SOCIAL SPACE	2
CH-06	FOCUS PODS	516	OPEN WORK AREA 09	2
CH-08a	HUDDLE CAVE w/FOUR SEATER	501	LOUNGE	1
CH-08b	HUDDLE CAVE w/FOUR SEATER	506	SOCIAL SPACE	1
CH-09a	LOUNGE CHAIR	516	OPEN WORK AREA 09	4
CH-10	CAFE CHAIR	501	LOUNGE	8
CH-12	LOUNGE BENCH	501	LOUNGE	3
CH-15	GUEST CHAIR (BY PSPC)	504	FOCUS ROOM 08	1

5TH FLOOR FURNITURE SCHEDULE				
Furniture Code	Furniture Type	Room No	Room Name	Quantity
CH-15	GUEST CHAIR (BY PSPC)	507	FOCUS ROOM 09	1
CH-15	GUEST CHAIR (BY PSPC)	508	FOCUS ROOM 10	1
CH-15	GUEST CHAIR (BY PSPC)	509	PHONE ROOM 07 (BF)	1
CH-15	GUEST CHAIR (BY PSPC)	514	FOCUS ROOM 11	1
CH-15	GUEST CHAIR (BY PSPC)	517	FOCUS ROOM 12	1
LK-01	LOCKER 18" W x 24"D x 72"H (SUPPLY BY CLIENT & INSTALL BY GC) & SEE FURNITURE NOTE#12 	501	LOUNGE	7
LK-01	LOCKER 18" W x 24"D x 72"H (SUPPLY BY CLIENT & INSTALL BY GC) & SEE FURNITURE NOTE#12 	502	LOCKER AREA	37
LK-01	LOCKER 18" W x 24"D x 72"H (SUPPLY BY CLIENT & INSTALL BY GC) & SEE FURNITURE NOTE#12 	506	SOCIAL SPACE	12
PB-01	PHONE BOOTH-SINGLE	512	CORRIDOR	1
PB-01	PHONE BOOTH-SINGLE	516	OPEN WORK AREA 09	1
TA-03	MULTI MEDIA TABLE	503	PROJECT ROOM 04	1
TA-06	COLLABORATIVE TABLE	515	WORK ROOM 05	1
TA-06	COLLABORATIVE TABLE	518	WORK ROOM 06	1
TA-07	LAPTOP TABLE	506	SOCIAL SPACE	2
TA-08	FREE STANDING TABLE	501	LOUNGE	5
TA-08	FREE STANDING TABLE	516	OPEN WORK AREA 09	2
TA-09	FREE STANDING TABLE	501	LOUNGE	2
TA-10	FREE STANDING TABLE	509	PHONE ROOM 07 (BF)	1
WS-01	RECTANGULAR TABLE (HA)	505	OPEN WORK AREA 08	4
WS-01	RECTANGULAR TABLE (HA)	516	OPEN WORK AREA 09	12
WS-01c	FREE STANDING POWER BEAM	505	OPEN WORK AREA 08	2
WS-01c	FREE STANDING POWER BEAM	516	OPEN WORK AREA 09	6
WS-03	RECTANGULAR TABLE (HA)	504	FOCUS ROOM 08	1
WS-03	RECTANGULAR TABLE (HA)	507	FOCUS ROOM 09	1
WS-03	RECTANGULAR TABLE (HA)	508	FOCUS ROOM 10	1
WS-03	RECTANGULAR TABLE (HA)	514	FOCUS ROOM 11	1
WS-03	RECTANGULAR TABLE (HA)	516	OPEN WORK AREA 09	8
WS-03	RECTANGULAR TABLE (HA)	517	FOCUS ROOM 12	1
WS-03c	FREE STANDING POWER BEAM	516	OPEN WORK AREA 09	4

1 5TH FLOOR FURNITURE PLAN
1:100

#	DATE	DESCRIPTION	BY
18	2021-04-19	ISSUED FOR CONSTRUCTION	BFD
17	2021-04-16	ISSUED FOR CCOM1	BFD
13	2021-02-03	ISSUED FOR ACOM1	BFD
12	2021-01-21	ISSUED FOR TENDER	BFD
11	2020-12-16	ISSUED FOR 99%CD	BFD
9	2020-11-09	ISSUED FOR 50%CD	BFD
8	2020-10-29	ISSUED FOR FURNITURE REVIEW	GIL
7	2020-10-16	ISSUED FOR 100% DD	BFD
6	2020-10-14	ISSUED FOR FURNITURE REVIEW	GIL
4	2020-10-01	ISSUED FOR FURNITURE REVIEW	GIL
2	2020-09-02	ISSUED FOR FURNITURE REVIEW	GIL
1	2020-08-07	ISSUED FOR 90% DD	GIL

PROJECT
ESDC FIT-UP
81 REGENT STREET
FREDERICTON, NB

DRAWING
5TH FLOOR FURNITURE / POWER & COMMUNICATION PLAN

PROJECT NO.	18.065IF2
PROJECT DATE	2020-04-16
DRAWN BY	GIL
CHECKED BY	BFD
SCALE	N.T.S.

DRAWING NO. **ID133**